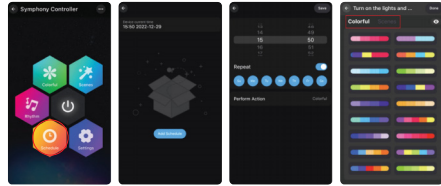
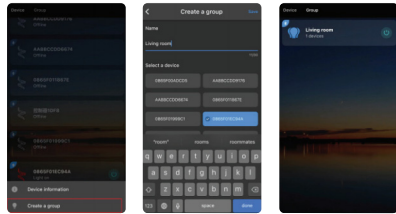


size: 12" x 4"

4. Schedule Mode: Create a schedule to automatically turn ON and OFF the Pixie LED Light Strip, at any given time with the timer function. A schedule can also perform saved colorful and scene mode.



5. Group Mode: This mode allows you to create different groups to control more than one device at the same time. On the Home screen, long press on one of the devices to bring up a menu. Select "Create a group"



PRODUCT SPECS:

Length: 8ft/2.44m
 Waterproof IPX4
 LED Count: 25 LEDs
 Input: Universal USB
 Wavelength: Red light: 620~625. Green light: 520-523. Blue light: 460-465
 Max Output Power: 5W
 Input Voltage: 5V
 Control Method: App
 Operation Platform: Android and IOS
 Working Temperature: 0~40°C
 Certification: FCC
 FCC ID: 2AANZPXL5
 BT ID: D063826

FCC Statement

NOTE: This equipment has been tested and found to comply with the limits for a Class B digital device, pursuant to part 15 of the FCC Rules. These limits are designed to provide reasonable protection against harmful interference in a residential installation. This equipment generates use and can radiate radio frequency energy and, if not installed and used in accordance with the instructions, may cause harmful interference to radio communications. However, there is no guarantee that interference will not occur in a particular installation. If this equipment does cause harmful interference to radio or television reception, which can be determined by turning the equipment off and on, the user is encouraged to try to correct the interference by one or more of the following measures:

- Reorient or relocate the receiving antenna.
- Increase the separation between the equipment and receiver.
- Connect the equipment into an outlet on a circuit different from that to which the receiver is connected.
- Consult the dealer or an experienced radio/TV technician for help

Changes or modifications not expressly approved by the party responsible for compliance could void the user's authority to operate the equipment.

This device complies with Part 15 of the FCC Rules. Operation is subject to the following two conditions:
 (1) this device may not cause harmful interference, and (2) this device must accept any interference received, including interference that may cause undesired operation.

FCC Radiation Exposure Statement:

This equipment complies with FCC radiation exposure limits set forth for an uncontrolled environment. This equipment should be installed and operated with minimum distance 20cm between the radiator & your body.

DGL Group guarantees the quality of this product. For questions or comments, please feel free to contact us via email at support@dglusa.com.

SAFETY INSTRUCTIONS

Keep the unit away from heat sources and direct sunlight.

Please use the product in a dry environment.

For input voltage, please use the DC voltage within the specified range as instructed in the manual, must not connect into 220V AC directly.

The product is requested a common anode connection. The wrong connection will cause a malfunction.

Repairs to electrical equipment should only be performed by a qualified electrician. Improper repairs may place the user at serious risk.

Keep the unit free from dust, lint, etc.

Do not use this unit for anything other than its intended use or purpose. Doing so may damage the device.

This product is not a toy. Keep out of reach of children.

CAUTION: Risk of Electrical Shock – Use in Dry Locations Only. USB port use in dry locations only.

Company name: DGL Group, Ltd.
 Address: 2045 Lincoln Highway, Edison, NJ 08817
 www.dglusa.com
 Tracking Number: DG051523



Thank you for purchasing the Vibe™ Pixie LED Light Strip. Please read all instructions carefully before using and retain this manual for future reference.

QUICK START

1. Plug-in to an USB Port
2. How to use the USB Controller
3. Download App
4. Add a Device
5. Control your Device with the App

INSTRUCTIONS

1. PLUG-IN TO AN USB PORT

Plug the Vibe™ Pixie LED Light Strip USB plug/controller into a USB Port.

2. HOW TO USE THE USB CONTROLLER

1. Press the control button (1) on the controller to turn ON.
2. When it's ON: Press the control button (1) to change light modes.
3. Hold the control button (1) for 3 seconds to turn off the Pixie LED Light Strip.



1- Control Button

3. DOWNLOAD THE APP

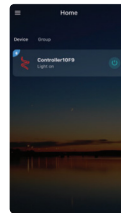
Scan the QR code below or search "ZENGGE" in the Apple App Store or Google Play



4. ADD A DEVICE

1. Turn ON your phone's Bluetooth.

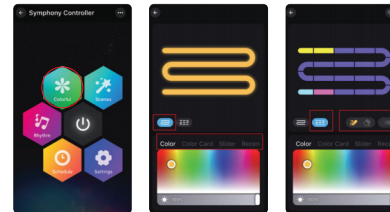
2. Turn ON Pixie LED Light Strip and choose "ControllerXXX" on your phone. It will automatically connect to the app, adding it as a device.



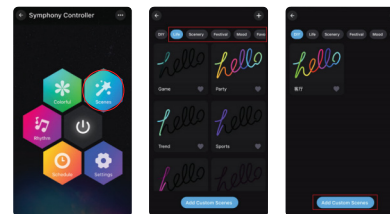
5. CONTROL YOUR DEVICE WITH THE APP

After the device has been connected successfully, find the device on the Home page under "Devices" to enter the smart light control panel.

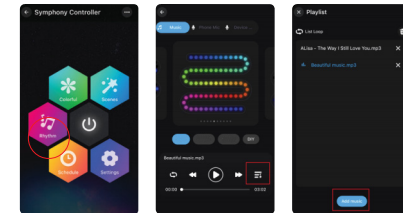
1. Colorful Mode: The color of the lights can be adjusted as a whole or by segment. App provides different columns for color selection. The brightness level can also be adjusted on the app. In the segment interface, users can freely smear or erase the color of each segment, and also set the gradient effect.



2. Scene Mode: There are Four Build-in scenes: "Life", "Scenery", "Festivals", "Mood", and click "DIY" or "Collection" to create your favorite light effect.



3. Rythm Mode: Music and lighting synchronization - Click "Add Music" > Import a music file or import it from the built-in music library.



Microphone - The lights' color will synchronize with the microphone sound. The microphone sensitivity can be adjusted on the APP with the slider tool. There are two ways to input the audio signal on the controller, a built-in APP microphone and an external microphone (for the sound control version).

