

## live love music™ QUICK START GUIDE

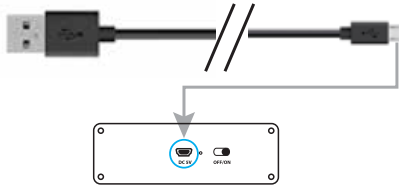
### LED WIRELESS SPEAKER

#### CHARGING THE SPEAKER

⚡ Charge the speaker before using it for the first time.

⌚ Plug in the cable to the micro USB port and charge for 2 hours.

Connect the charging cable to charging port.



## live love music™ QUICK START GUIDE

### LED WIRELESS SPEAKER

#### PAIRING YOUR SPEAKER

Your speaker will work best if it is within 33 ft. of your smart device. You may experience sound briefly cutting off if you are out of range or if your wireless connection is weak. Make sure Bluetooth is enabled on your smart phone or tablet before starting the pairing process.



Turn on the speaker by flipping the Power Switch to the "On" position. The speaker will "beep" when it is ready to connect.



From your smart phone or tablet, find a list of nearby devices and choose "FB-3831F". If pairing successfully, the speaker will "beep" again when pairing is complete!

## live love music™ QUICK START GUIDE

### LED WIRELESS SPEAKER

#### FCC STATEMENT

This device complies with part 15 of the FCC Rules. Operation is subject to the following two conditions: (1) This device may not cause harmful interference, and (2) this device must accept any interference received, including interference that may cause undesired operation.

Please note that changes or modifications not expressly approved by the party responsible for compliance could void the user's authority to operate the equipment.

#### FCC INSTRUCTIONS FOR A CLASS B DIGITAL DEVICE OR PERIPHERAL

Note: This equipment has been tested and found to comply with the limits for a Class B digital device, pursuant to part 15 of the FCC Rules. These limits are designed to provide reasonable protection against harmful interference in a residential installation. This equipment generates, uses and can radiate radio frequency energy and, if not installed and used in accordance with the instructions, may cause harmful interference to radio communications. However, there is no guarantee that interference will not occur in a particular installation. If this equipment does cause harmful interference to radio or television reception, which can be determined by turning the equipment off and on, the user is encouraged to

## live love music™ QUICK START GUIDE

### LED WIRELESS SPEAKER

try to correct the interference by one or more of the following measures:

- Reorient or relocate the receiving antenna.
- Increase the separation between the equipment and receiver.
- Connect the equipment into an outlet on a circuit different from that to which the receiver is connected.
- Consult the dealer or an experienced radio/TV technician for help.

This equipment complies with FCC radiation exposure limits set forth for an uncontrolled environment

#### WARNING

Keep away from water and moisture.  
Keep away from heat sources.  
Do not disassemble.

FCC ID: 2AANZ3831F BT ID: D051448

## live love music™ QUICK START GUIDE

### LED WIRELESS SPEAKER

**CAUTION:** Use only the battery provided. there may be a risk of explosion if a wrong type of battery is used for the parent unit. The battery cannot be subjected to high or low extreme temperature and low air pressure at high altitude during use, storage or transportation. Disposal of battery into fire or a hot oven, or mechanically crushing or cutting or the battery can result in an explosion. Leaving the battery in an extremely high temperature surrounding environment can result in an explosion or the leakage of flammable liquid or gas. Battery subjected to extremely low air pressure may result in an explosion or the leakage of flammable liquid or gas. Dispose of used battery according to the instructions.

Rechargeable batteries model RFQ 18650 1200mAh  
Supplied by Shenzhen Ruifeng qi Electronic co., LTD.  
Max. Specified ambient temperature 40°C  
Frequency: 2402Hz-2480MHz