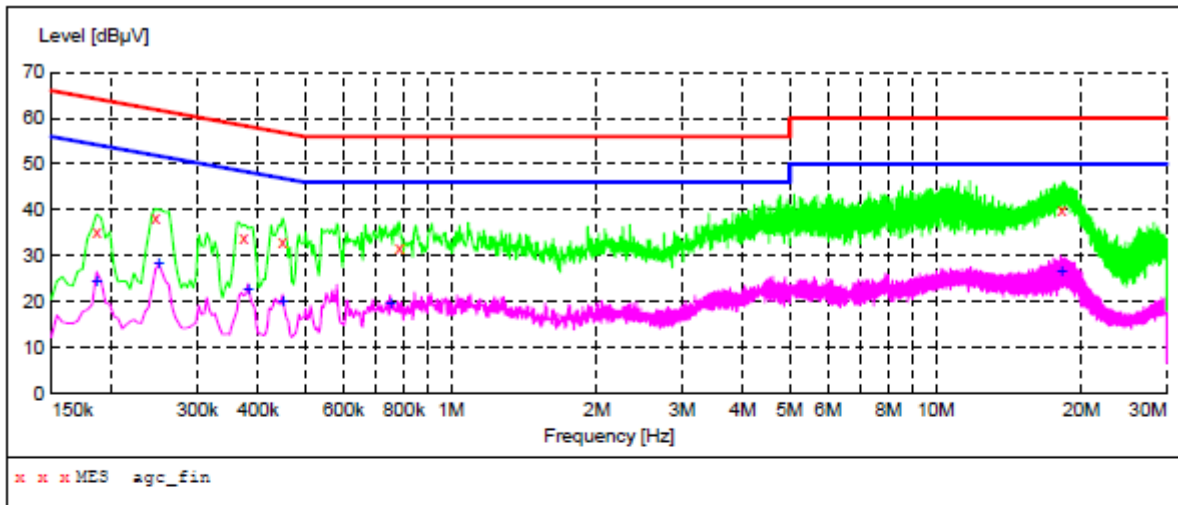


Line Conducted Emission Test Line 2-N



**MEASUREMENT RESULT: "agc\_fin"**

2020/6/3 15:02

Frequency MHz	Level dBµV	Transd dB	Limit dBµV	Margin dB	Detector	Line	PE
0.186000	35.30	10.3	64	28.9	QP	N	GND
0.246000	38.10	10.3	62	23.8	QP	N	GND
0.374000	34.00	10.3	58	24.4	QP	N	GND
0.450000	33.20	10.3	57	23.7	QP	N	GND
0.782000	31.60	10.3	56	24.4	QP	N	GND
18.170000	40.20	12.2	60	19.8	QP	N	GND

**MEASUREMENT RESULT: "agc\_fin2"**

2020/6/3 15:02

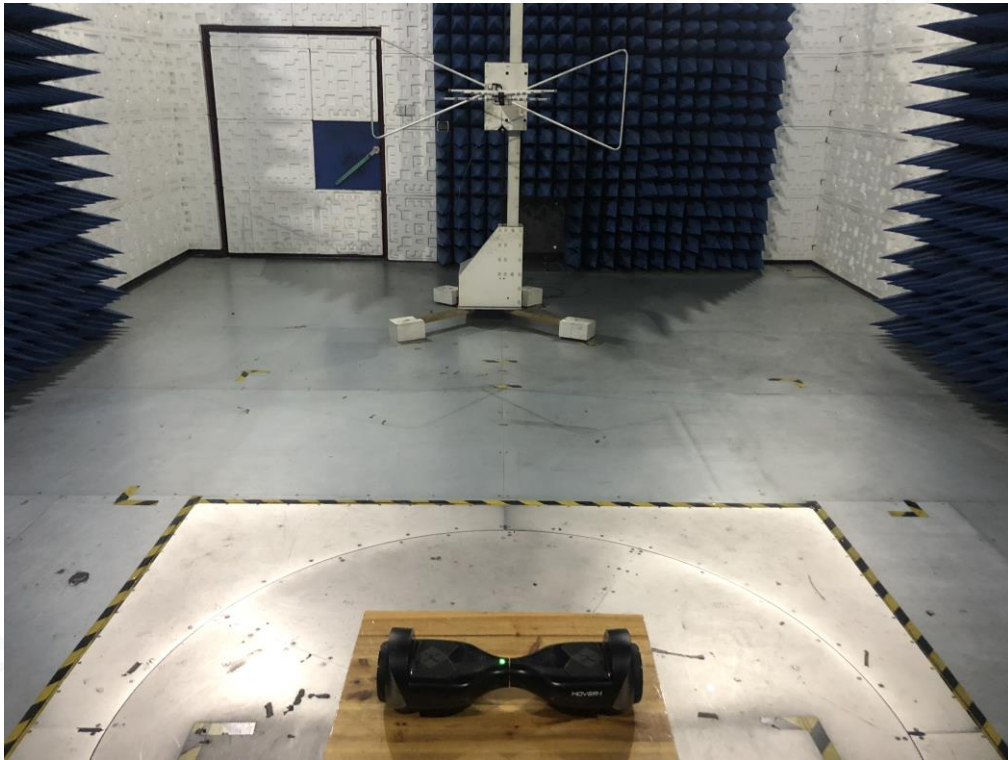
Frequency MHz	Level dBµV	Transd dB	Limit dBµV	Margin dB	Detector	Line	PE
0.186000	24.20	10.3	54	30.0	AV	N	GND
0.250000	28.00	10.3	52	23.8	AV	N	GND
0.382000	22.60	10.3	48	25.6	AV	N	GND
0.450000	20.00	10.3	47	26.9	AV	N	GND
0.750000	19.40	10.3	46	26.6	AV	N	GND
18.170000	26.30	12.2	50	23.7	AV	N	GND

**RESULT: PASS**

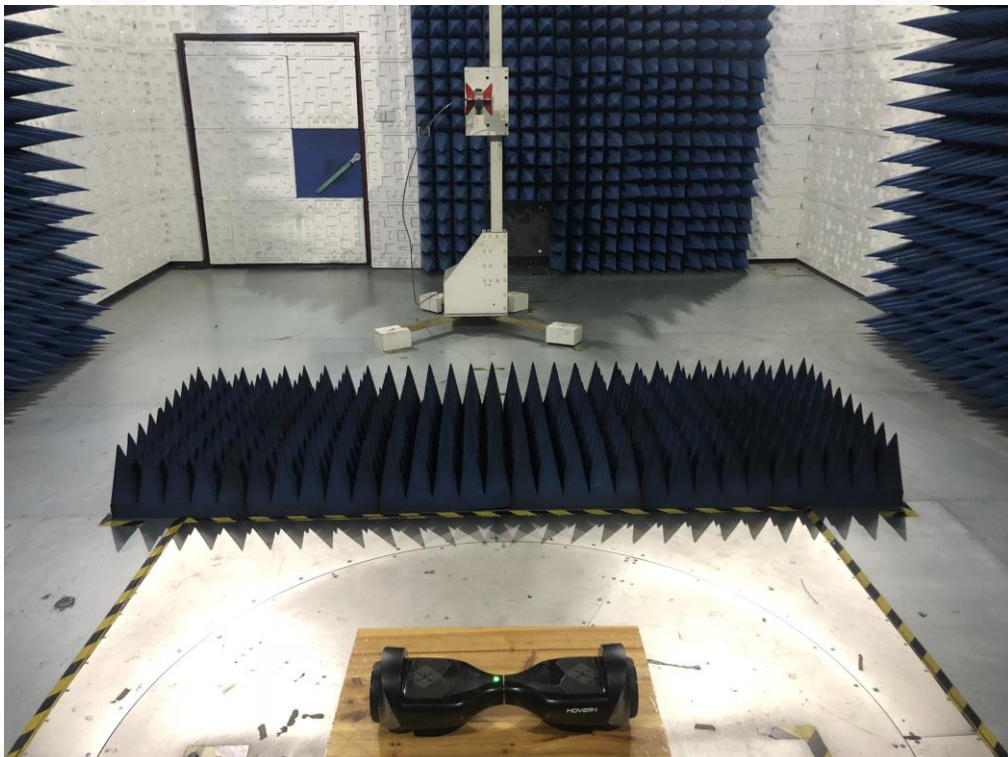
Note: All the test modes had been tested, the mode 1 was the worst case. Only the data of the worst case would be record in this test report.



**APPENDIX A: PHOTOGRAPHS OF TEST SETUP**  
RADIATED EMISSION TEST SETUP BELOW 1GHZ



RADIATED EMISSION TEST SETUP ABOVE 1GHZ



CONDUCTED EMISSION TEST SETUP





**APPENDIX B: PHOTOGRAPHS OF EUT**

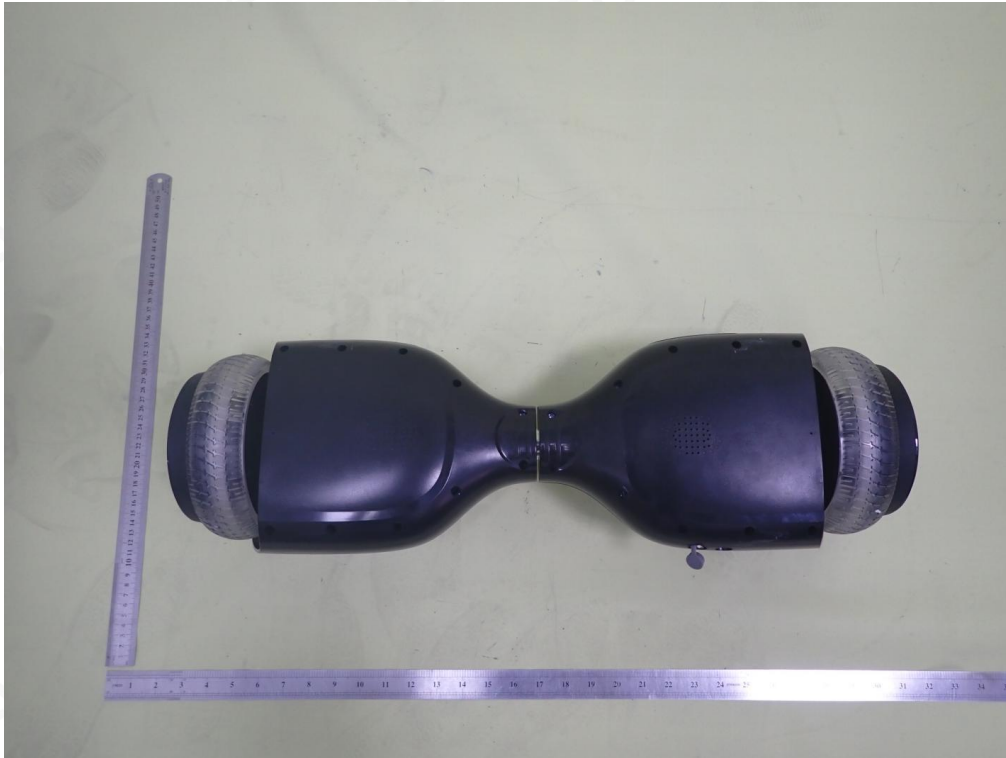
ALL VIEW OF EUT



TOP VIEW OF EUT



BOTTOM VIEW OF EUT



FRONT VIEW OF EUT





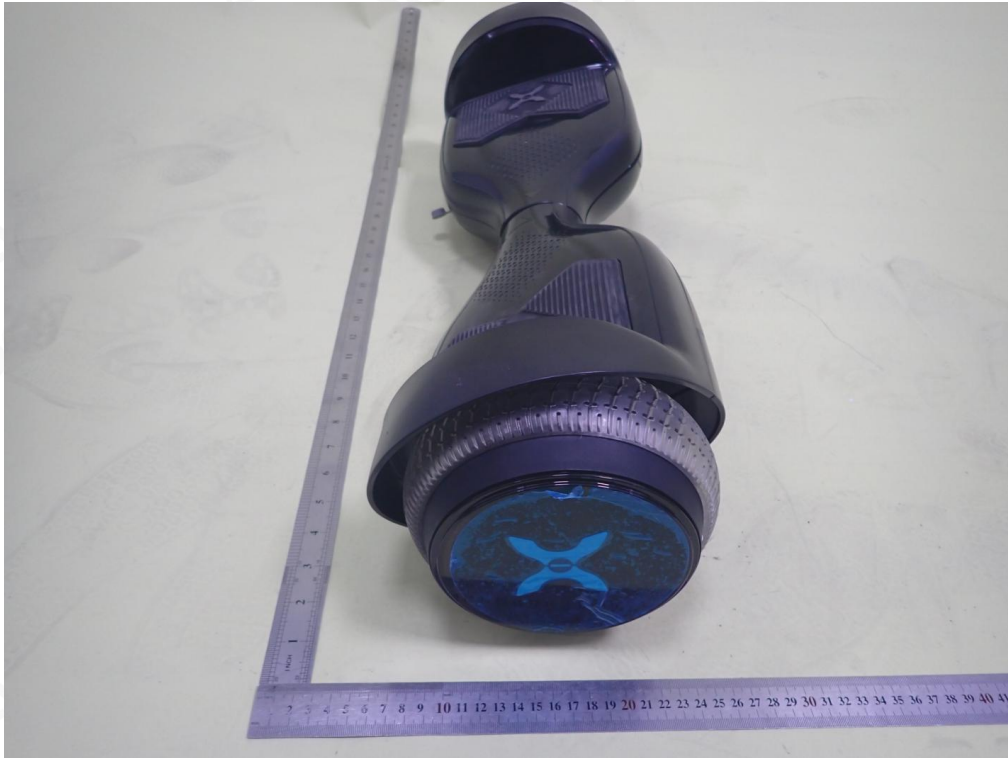
BACK VIEW OF EUT



LEFT VIEW OF EUT



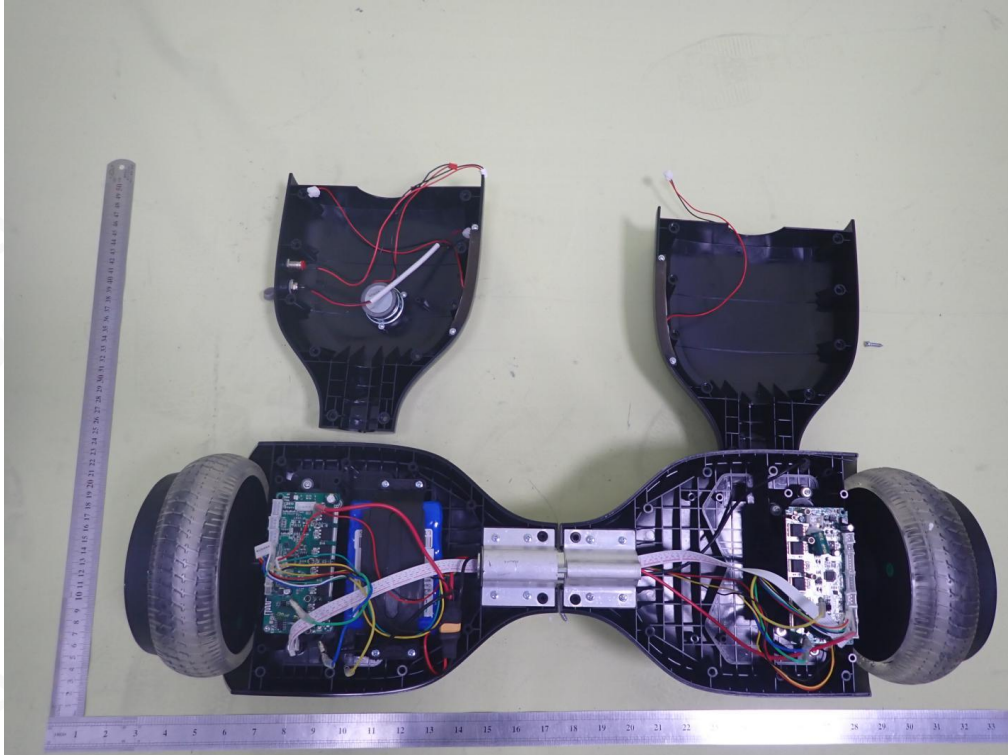
RIGHT VIEW OF EUT



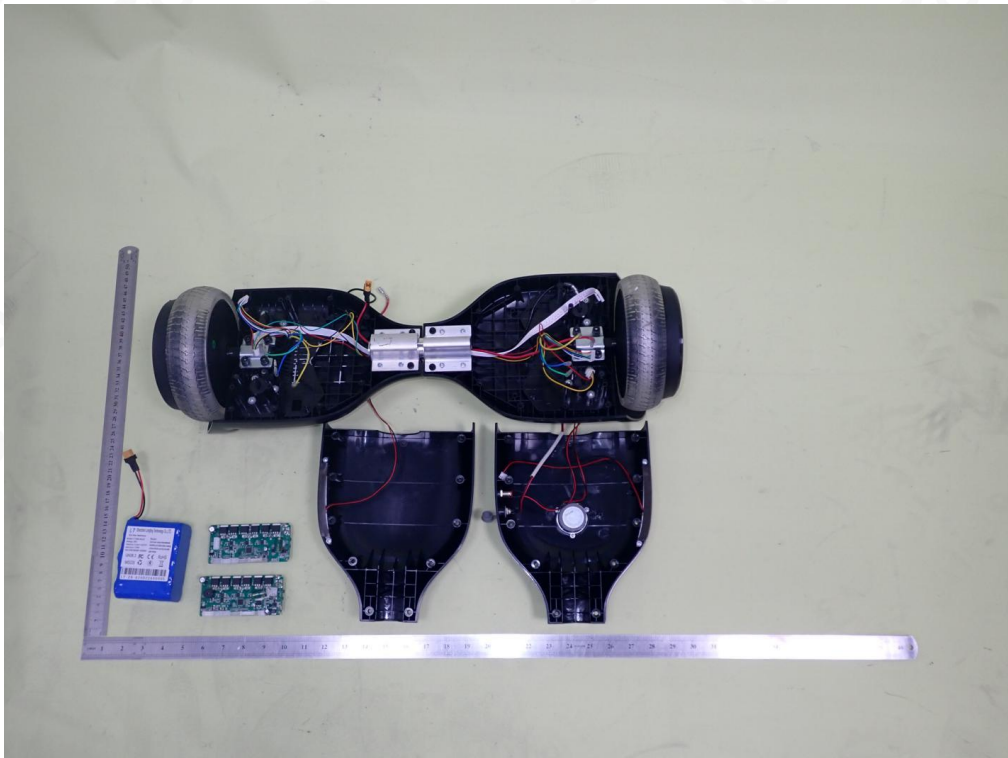
VIEW OF EUT(PORT)



OPEN VIEW-1 OF EUT

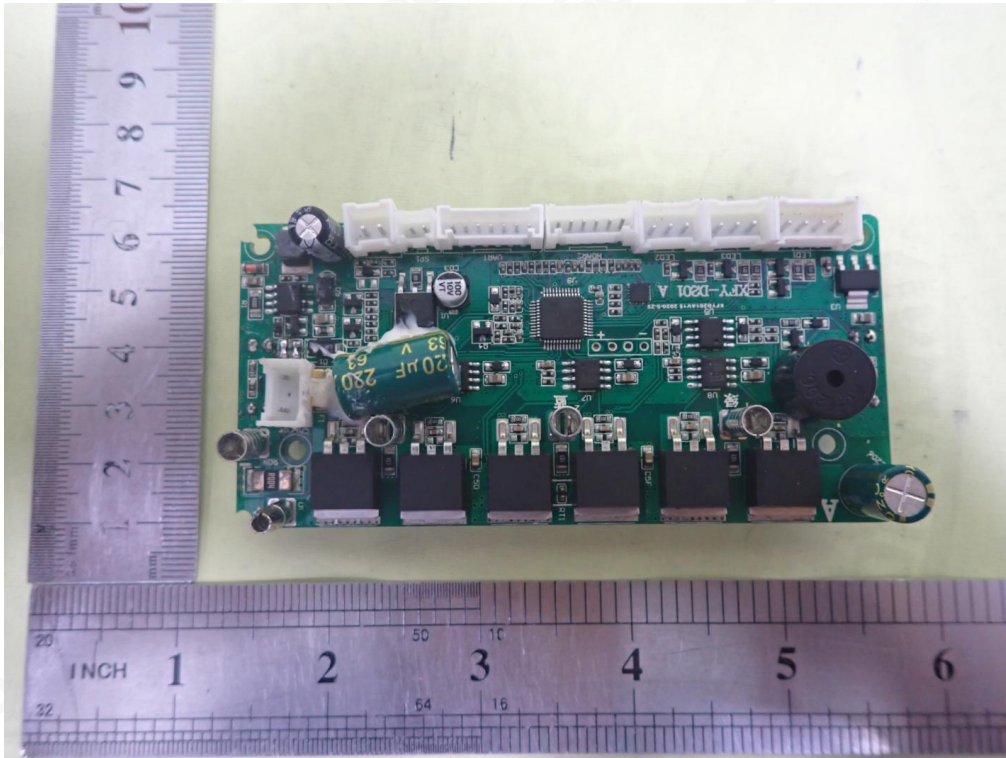


OPEN VIEW-2 OF EUT

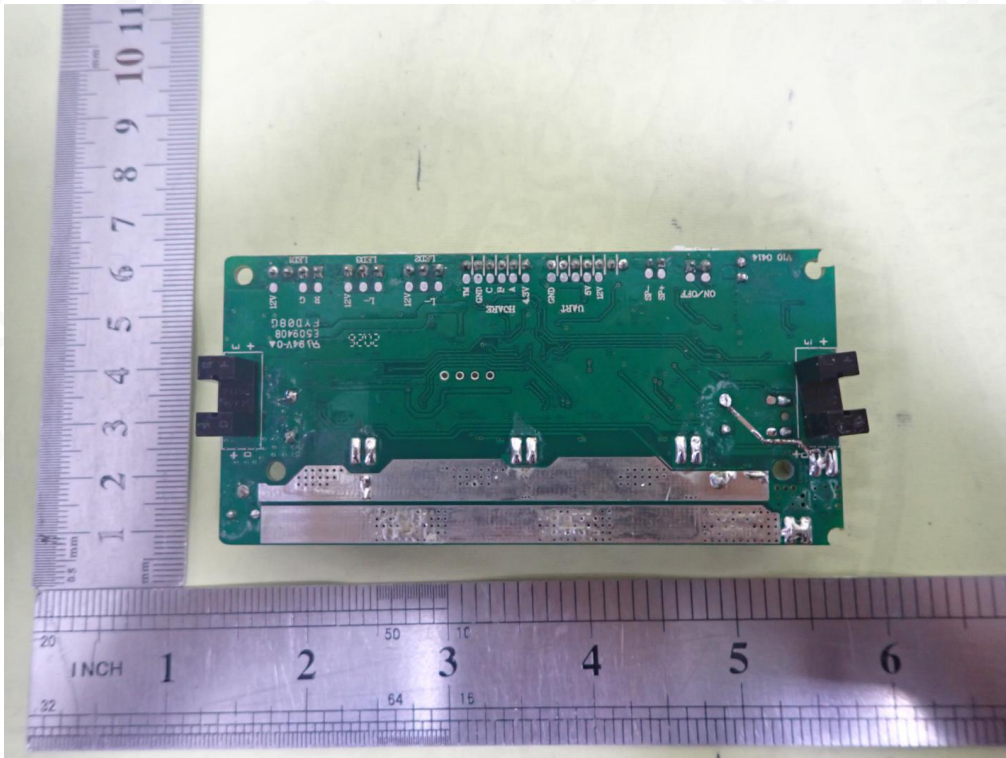




INTERNAL VIEW-1 OF EUT

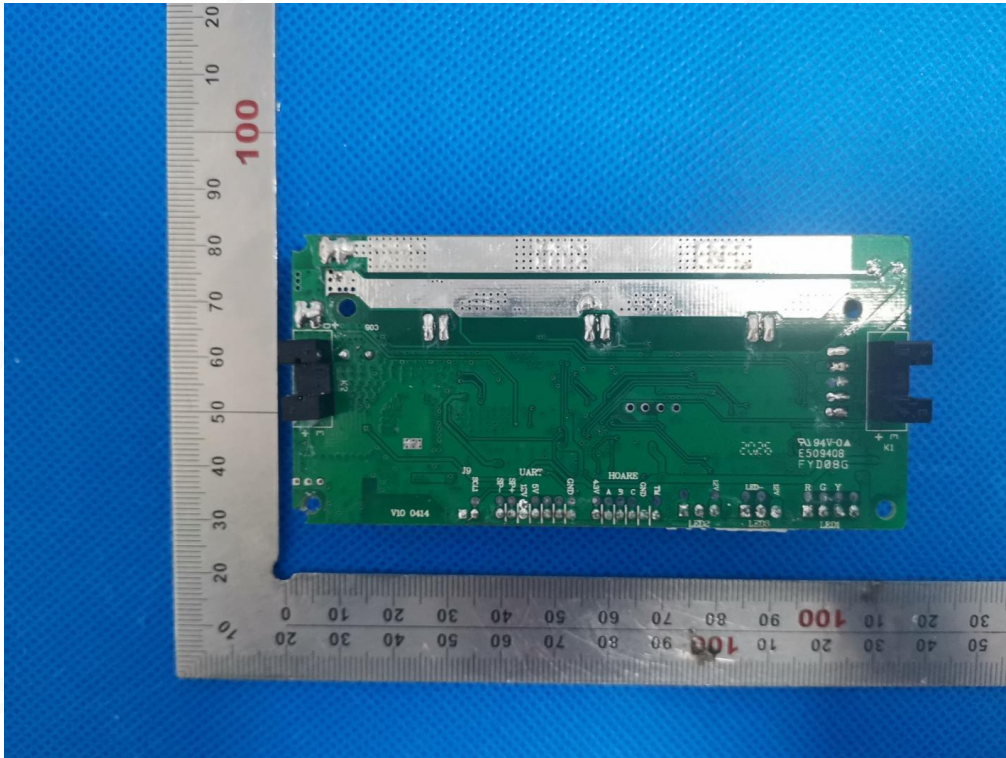


INTERNAL VIEW-2 OF EUT

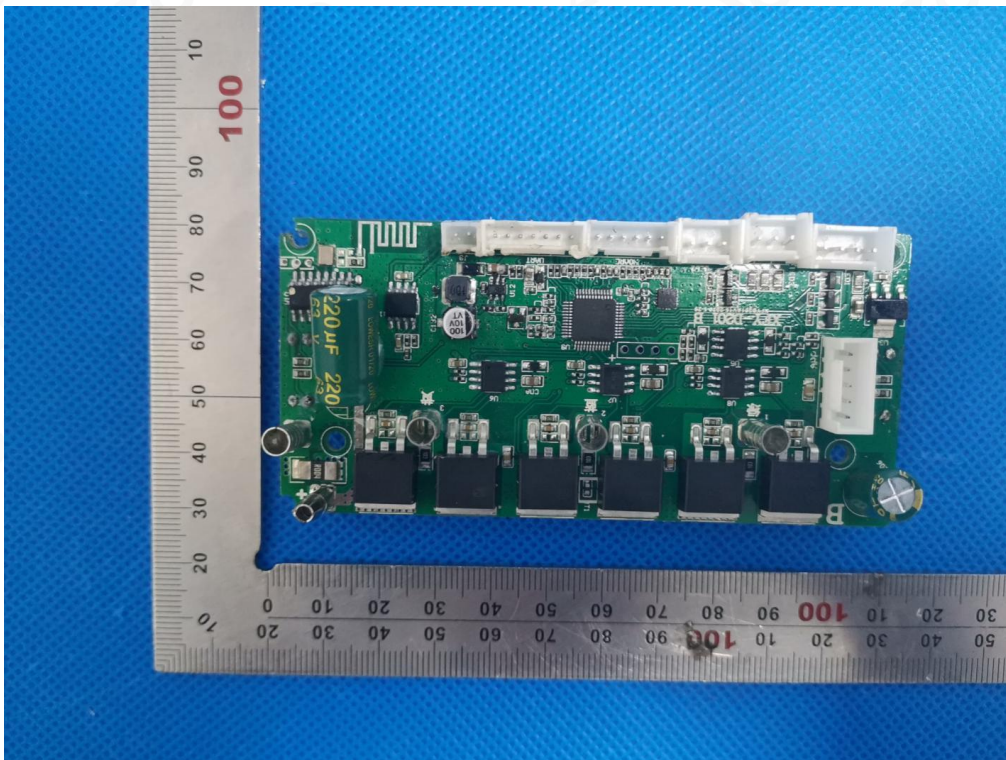




INTERNAL VIEW-3 OF EUT

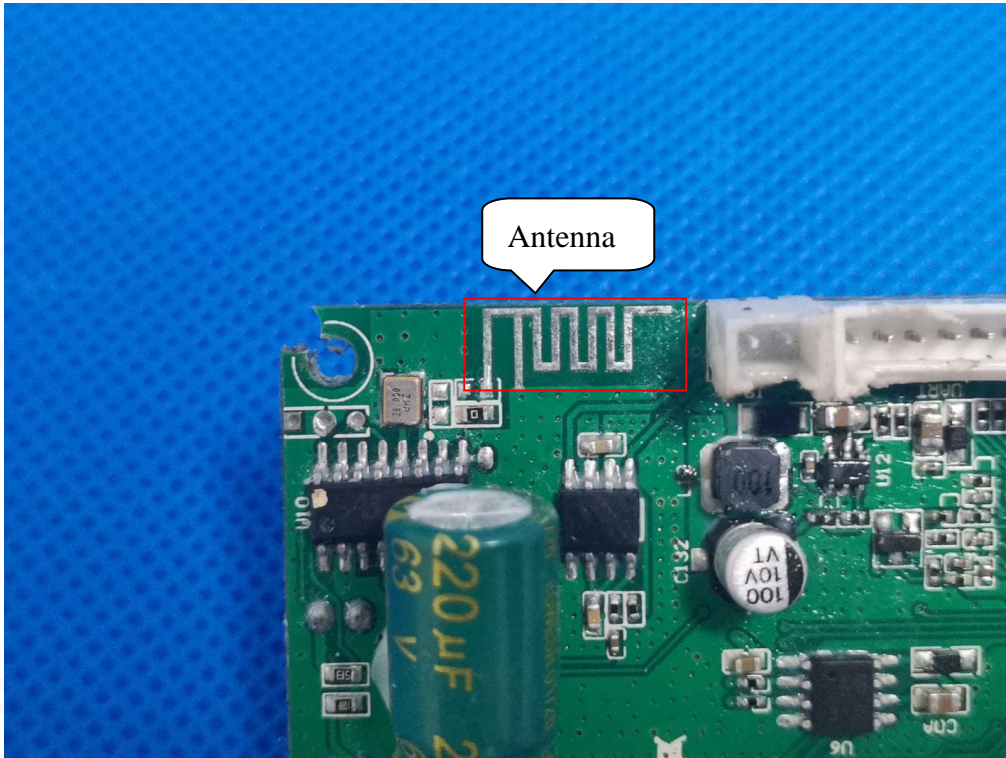


INTERNAL VIEW-4 OF EUT

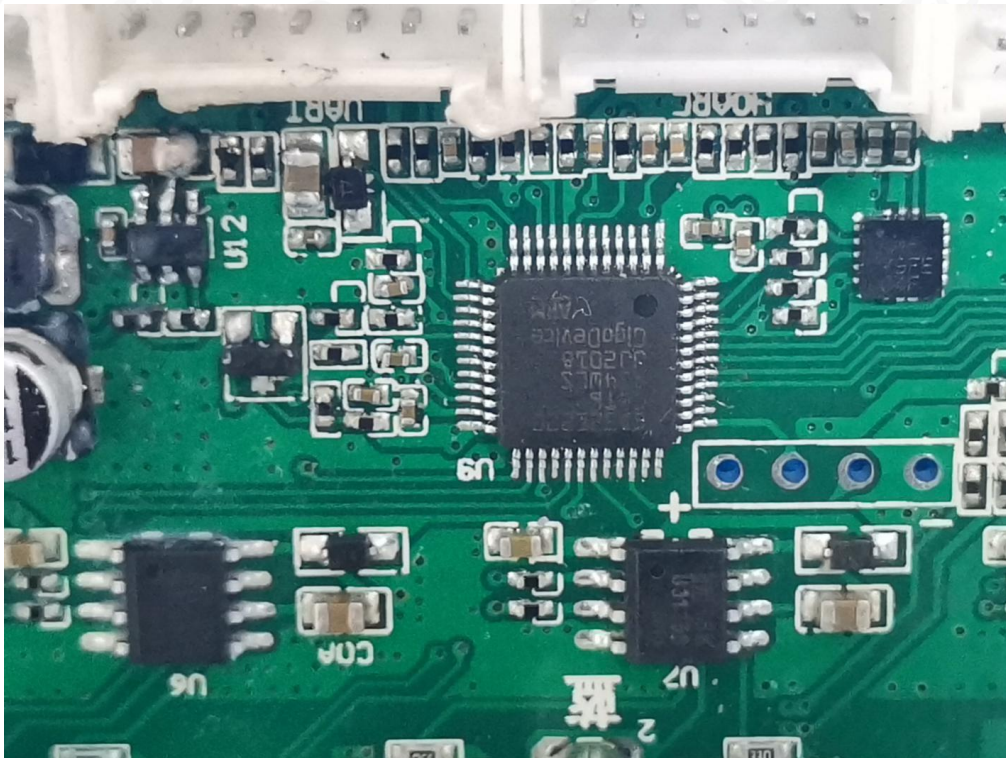




INTERNAL VIEW-5 OF EUT

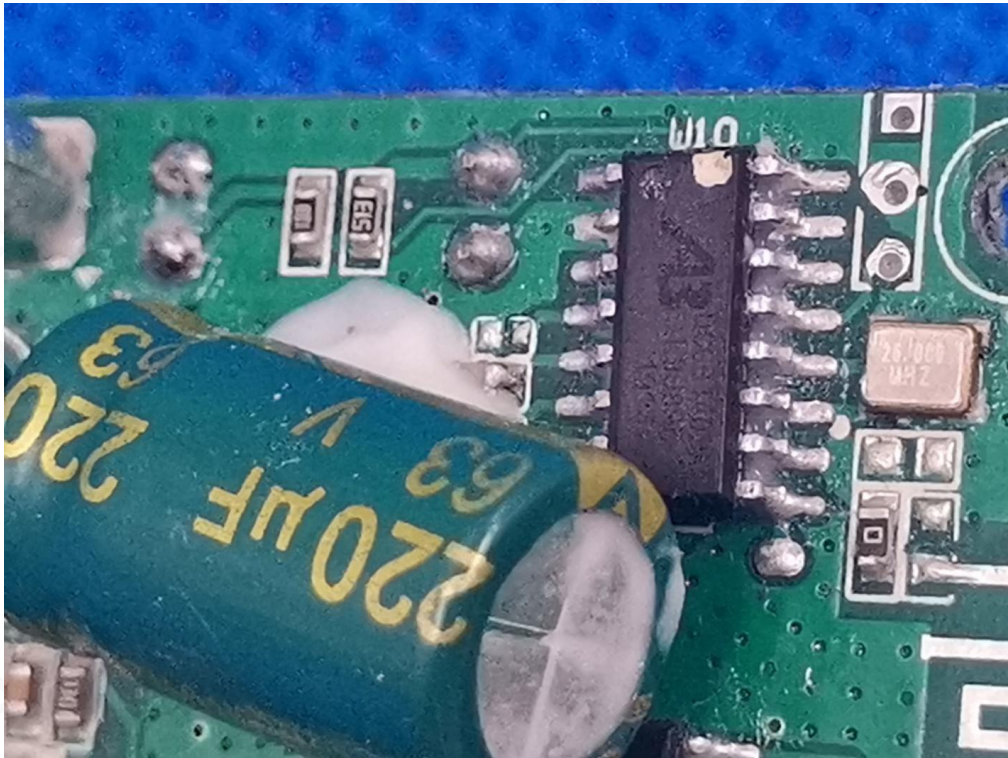


INTERNAL VIEW-6 OF EUT





INTERNAL VIEW-7 OF EUT



VIEW OF BATTERY





VIEW OF ADAPTER

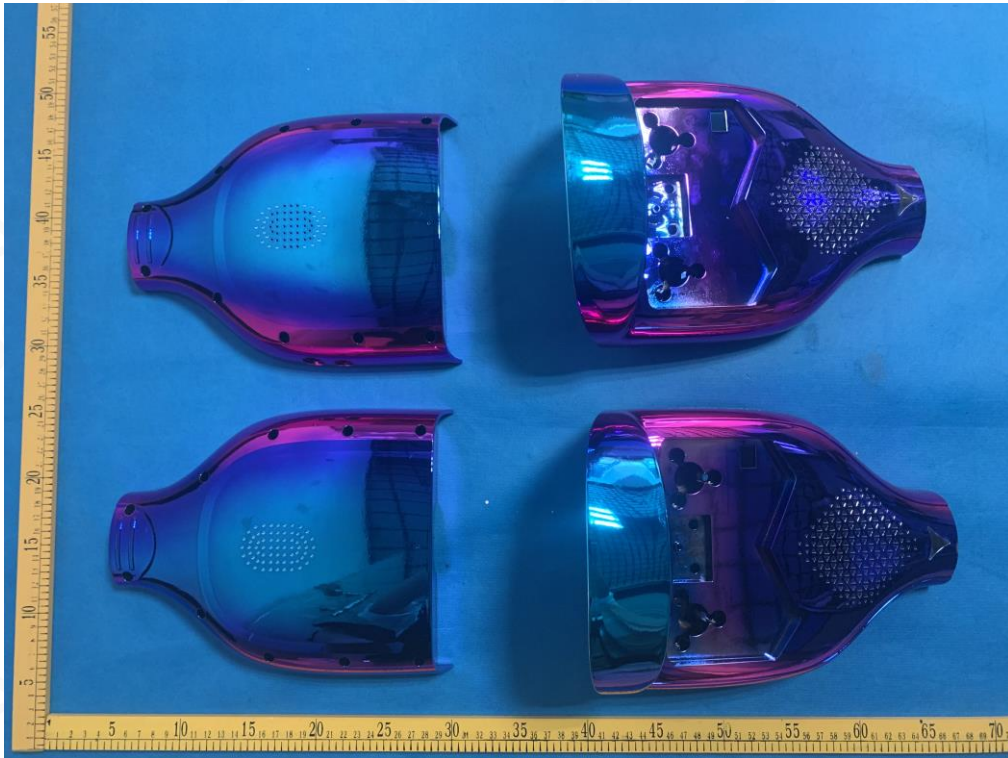


VIEW OF SHELL-1





VIEW OF SHELL-2



VIEW OF SHELL-3





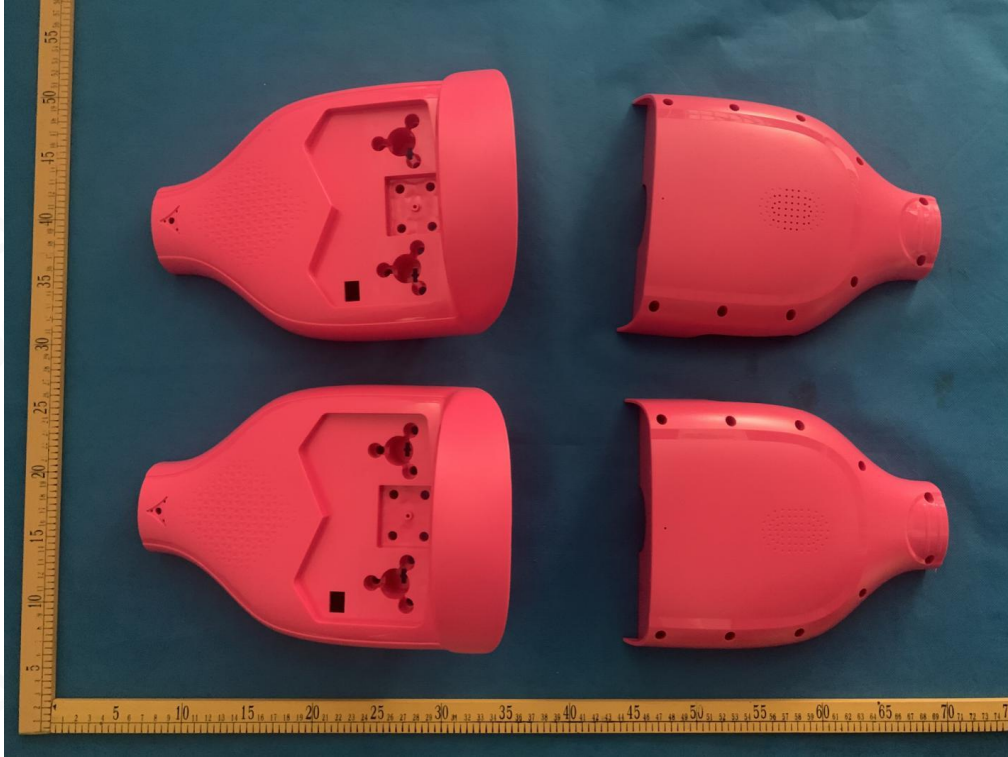
VIEW OF SHELL-4



VIEW OF SHELL-5



VIEW OF SHELL-6



----END OF REPORT----

