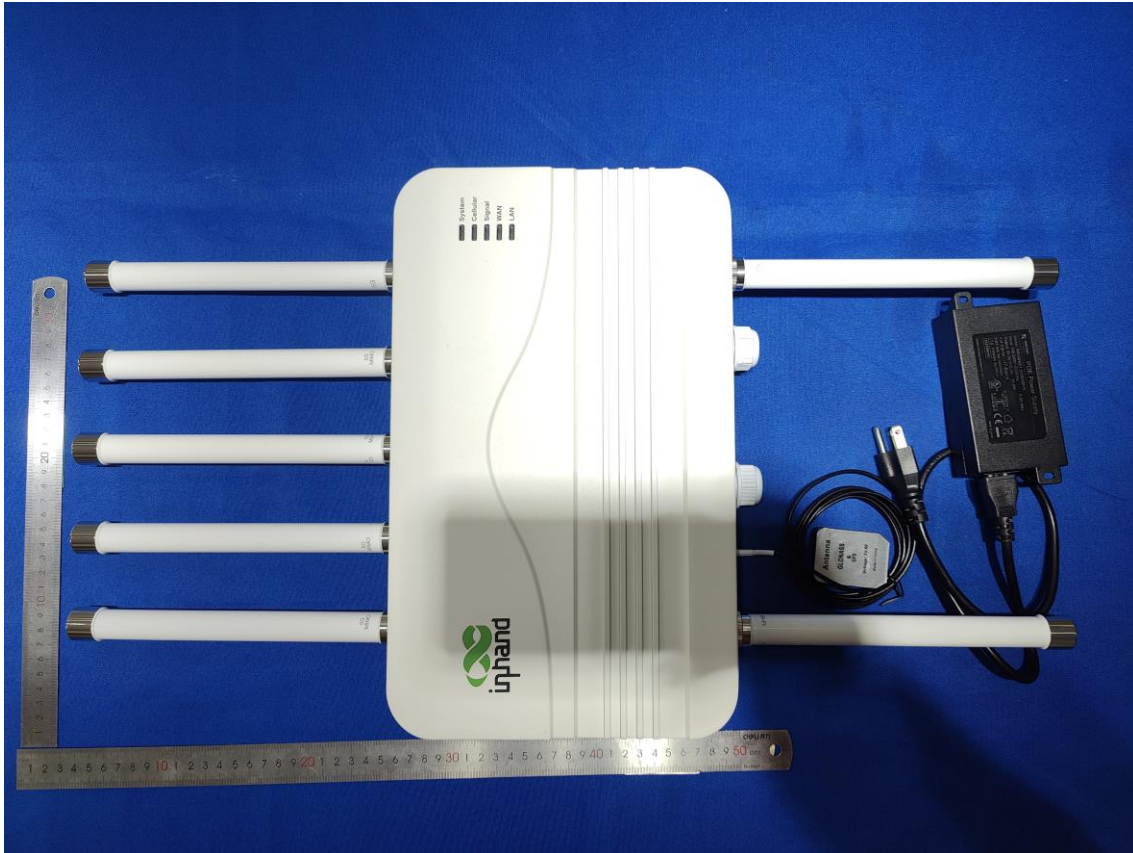
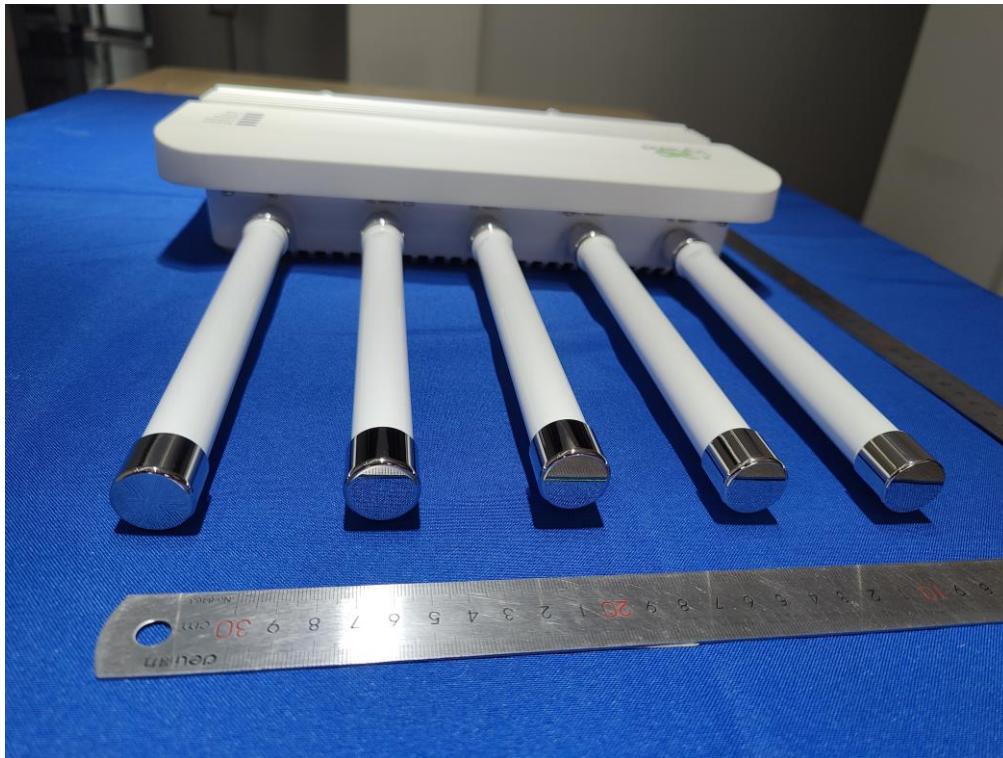


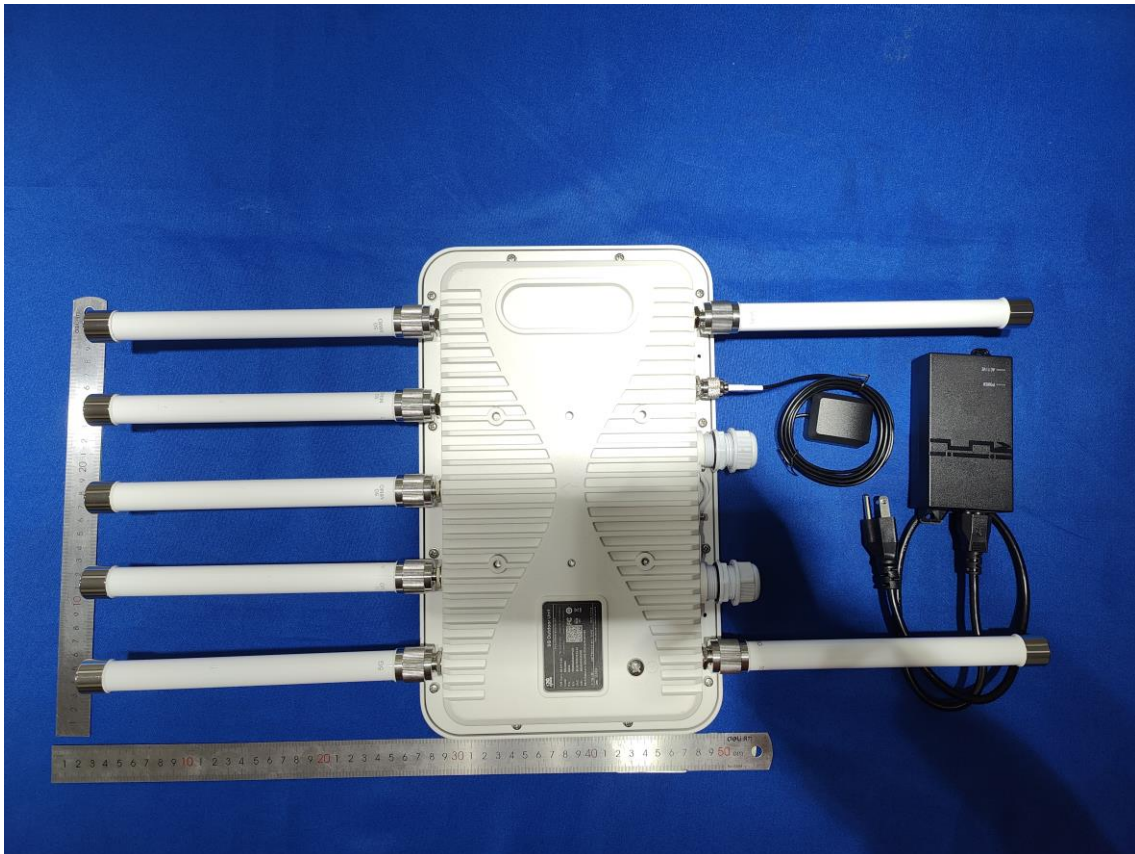
# 1 Photographs - EUT Constructional Details

Model No. : ODU2002

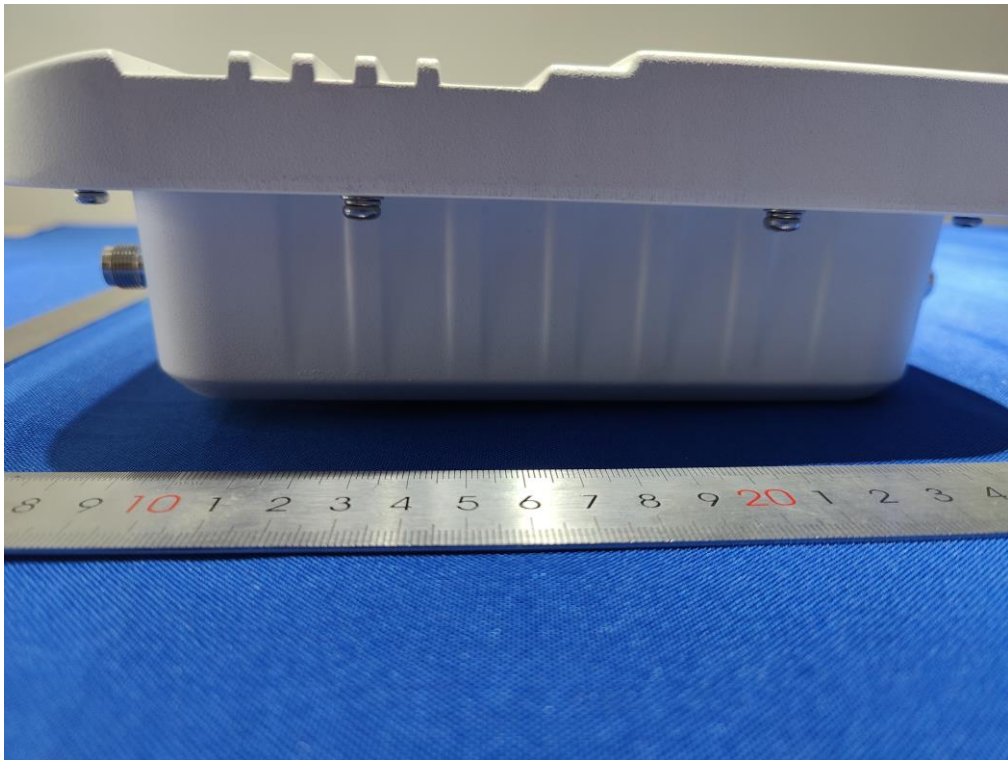
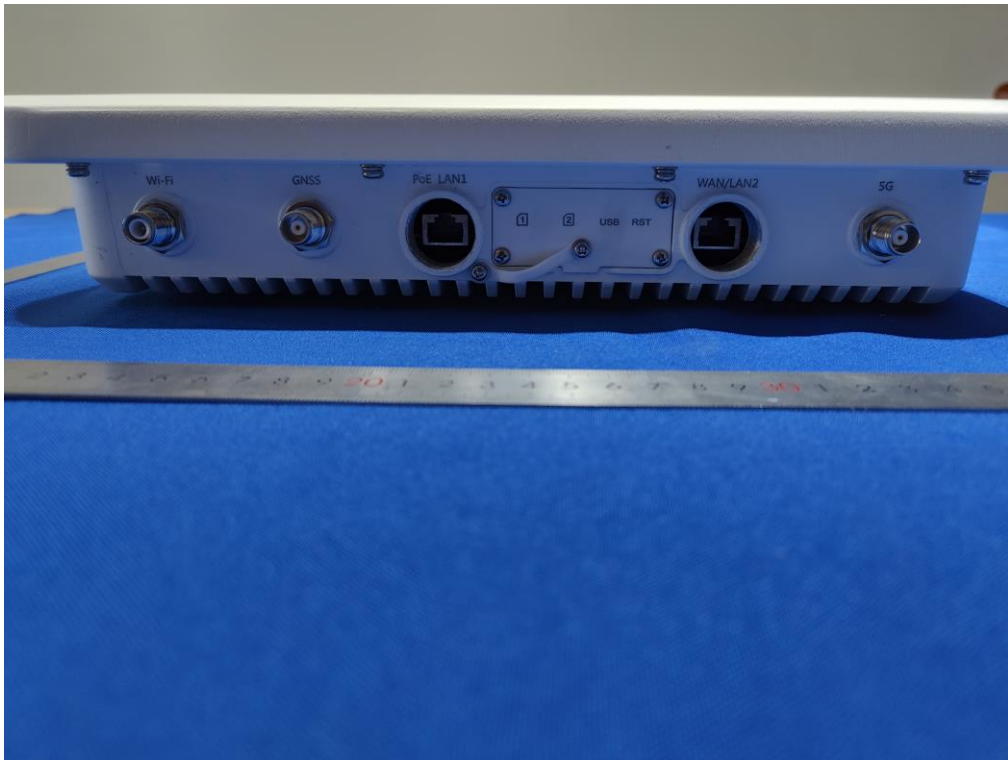
FCC Series Models NO: ODU2x02, Where 'x' represents the numbers '0-9'

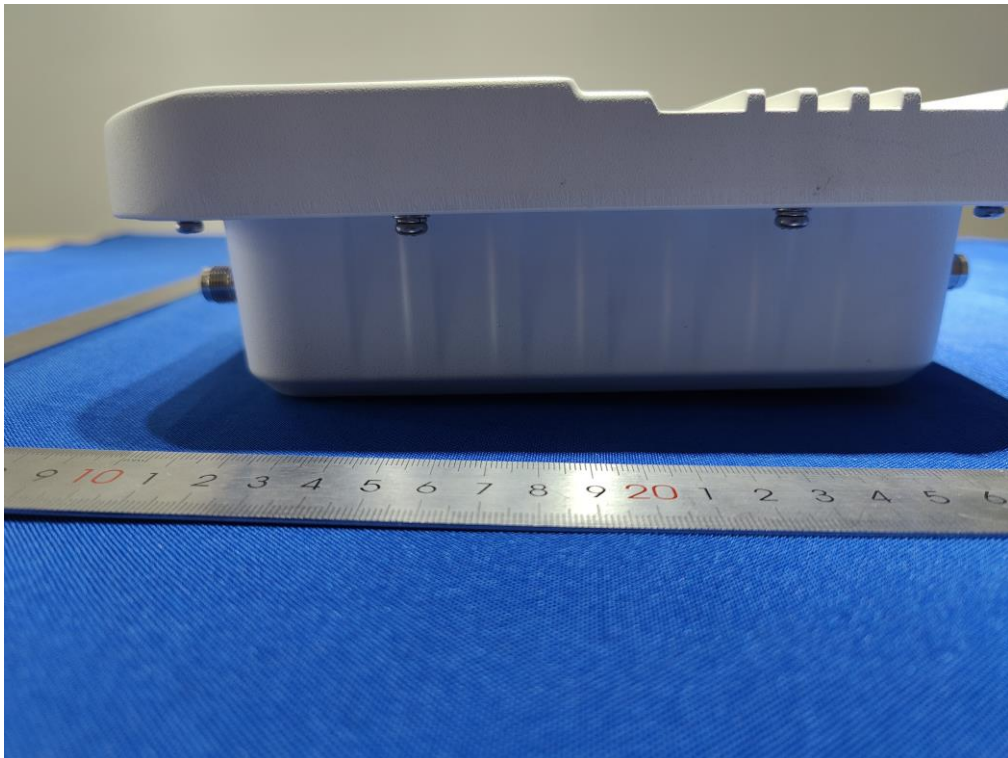
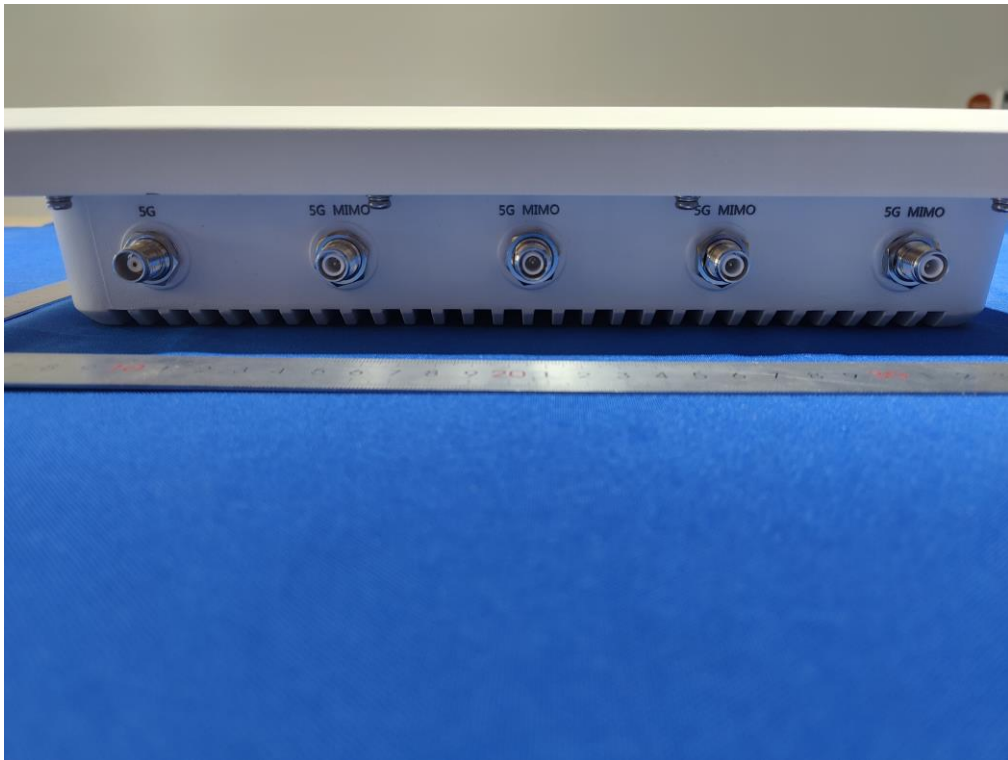


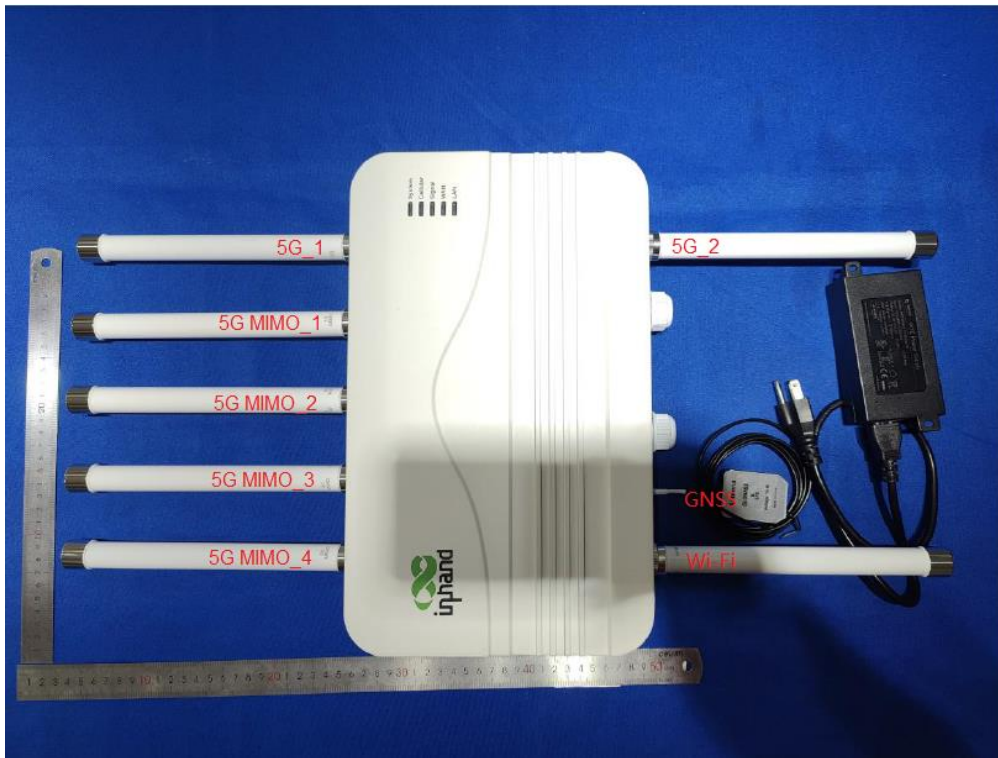












### Single band & DLCA ANT Port Mapping

| ADP ANT   | PAD | Freq. range (MHz) | TX/PRX  | DRX   | MIMO PRX  | MIMO DRX  |
|-----------|-----|-------------------|---|---|---|---|
| 5G MIMO_4 | 193 | 3300~4200         |   | LTE_B48<br>NR_n48/77/78   |   |   |
| 5G MIMO_3 | 175 | 1710~5925         | LTE_B41/46<br>NR_n41  |   |   | LTE_B2/4/7/25/30/48/66<br>NR_n2/7/25/30/48/66/77/78 |
| 5G MIMO_2 | 157 | 1930~5925         | Only SRS  | LTE_B46   | LTE_B2/4/7/25/30/41/48/66<br>NR_n2/7/25/30/41/48/66/77/78 |   |
| 5G MIMO_1 | 148 | 3300~4200         | LTE_B48<br>NR_n48/77/78   |   |   |   |
| 5G_1      | 139 | 617~2690          | Only SRS  | WCDMA_B2/4/5<br>LTE_B2/4/5/7/12/13/14/17/25/26/29/30/41/66/71<br>NR_n2/5/7/12/14/25/30/41/66/71 |   |   |
| 5G_2      | 130 | 617~2690          | WCDMA_B2/4/5<br>LTE_B2/4/5/7/12/13/14/17/25/26/29/30/66/71<br>NR_n2/5/7/12/14/25/30/66/71 |   |   | LTE_B41   |
| ANT_10    | 199 | GNSS              |   |   |   |   |

Remark: Only Band 48 is supported. Other bands are blocked