

Always there to help you

Register your product and get support at
www.philips.com/support



User manual

PHILIPS

Contents

1	Safety	2
----------	---------------	----------

2	Your Portable Speaker	3
	Introduction	3
	What's in the box	3
	Overview of the speaker	4

3	Get started	5
	Charge the built-in battery	5
	Turn on the speaker	5

4	Use Bluetooth devices	6
	Connect a device	6
	Play audio via Bluetooth	7

5	Listen to an external device	8
----------	-------------------------------------	----------

6	Adjust volume	9
----------	----------------------	----------

7	Product information	10
	General information	10
	Bluetooth	10
	Amplifier	10

8	Troubleshooting	11
	General	11
	About Bluetooth device	11

9	Notice	12
	Compliance	12
	Care of the environment	12
	Trademark notice	12
	Copyright	12

1 Safety

- Do not use this apparatus near water.
- Do not place near any heat sources such as radiators, heat registers, stoves, or other apparatus (including amplifiers) that produce heat.
- Only use attachments/accessories specified by the manufacturer.
- The product shall not be exposed to dripping or splashing.
- Do not place any sources of danger on the product (e.g. liquid filled objects, lighted candles).
- Battery shall not be exposed to excessive heat such as sunshine, fire or the like.
- Danger of explosion if battery is incorrectly replaced. Replace only with the same or equivalent type.
- Batteries contain chemical substances, so they should be disposed of properly.

! Caution

- Removal of the built-in battery invalidates the warranty and may destroy the product.
- These servicing instructions are for use by qualified service personnel only. To reduce the risk of electric shock do not perform any servicing other than that contained in the operating instructions unless you are qualified to do so.

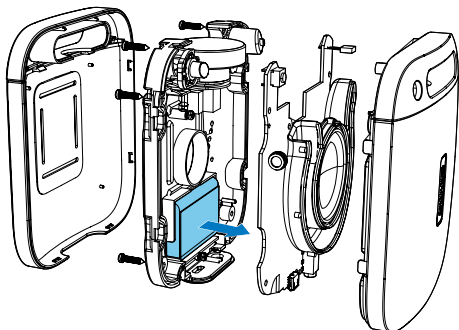
☰ Note

- Rechargeable batteries have a limited number of charge cycles. Battery life and number of charge cycles vary by use and settings.

! Warning

- Never remove the casing of this product.
- Never lubricate any part of this product.
- Never place this product on other electrical equipment.
- Keep this product away from direct sunlight, naked flames or heat.

Always bring your product to a professional to remove the built-in battery.



2 Your Portable Speaker

Congratulations on your purchase, and welcome to Philips! To fully benefit from the support that Philips offers, register your product at www.philips.com/welcome.

Introduction

With this speaker, you can

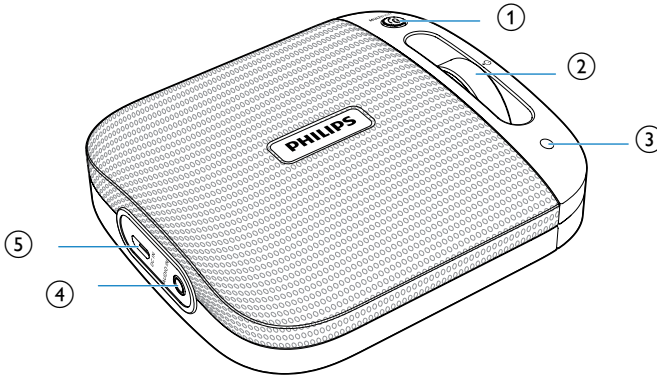
- listen to audio from an external device via Bluetooth connection,
- listen to audio from an external device through an audio input cable, and
- make phone calls.

What's in the box

Check and identify the contents of your package:

- Main unit
- USB cable
- Short user manual
- Safety sheet

Overview of the speaker



① **Ⓜ /MULTIPAIR**

- In Bluetooth mode, press and hold to enter pairing mode.
- Press to answer an incoming call.
- Press to end the current call.
- Press and hold to reject an incoming call.

② **⏻**

- Turn on the product.

③ **Bluetooth and power indicator**

④ **AUDIO IN**

- Connect external audio devices.

⑤ **DC IN**

- Charge the speaker via USB cable.

3 Get started

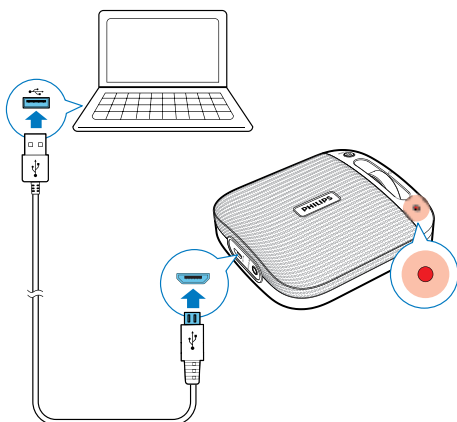
Always follow the instructions in this chapter in sequence.

Charge the built-in battery

The speaker is powered by a built-in rechargeable battery.

Note

- Before use, fully charge the built-in battery.
- The micro USB socket is for charging only.



Connect the USB cable between

- the micro USB socket on the speaker; and
- a USB socket on your computer.

Battery indicator

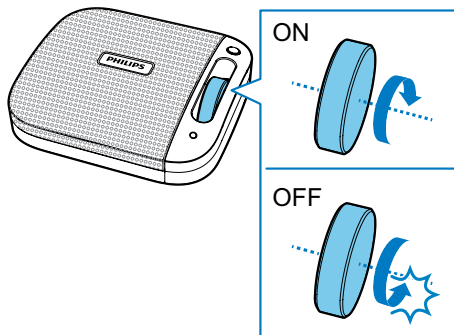
The LED indicator indicates the battery status.

Indicator	Battery
Solid red	Under charging
Off	Fully charged
Blinking red in Bluetooth mode	Low power

Turn on the speaker

Rotate the knob to turn on or turn off this speaker.

- Bluetooth mode: Listen to an external Bluetooth device through Bluetooth connection.
- **OFF**: Turn off this product.



4 Use Bluetooth devices

With this speaker, you can listen to audio from a player and make a call through Bluetooth.

Note

- WOOX Innovations does not guarantee the compatibility with all Bluetooth devices.
- Before pairing a device with this product, read its user manual for Bluetooth compatibility. Make sure that the connected Bluetooth device supports the Advanced Audio Distribution Profile (A2DP) and the Audio Video Remote Control Profile (AVRCP).
- The product can memorize a maximum of 4 paired devices.
- Make sure that Bluetooth function is enabled on your device, and your device is set as visible to all other Bluetooth devices.
- The operational range between this product and a Bluetooth device is approximately 10 meters (30 feet).
- Any obstacle between this product and a Bluetooth device can reduce the operational range.
- Keep away from any other electronic device that may cause interference.

Connect a device

- 1 Rotate the knob to turn on the speaker.
↳ The Bluetooth indicator flashes blue.
- 2 On your device, search for Bluetooth devices.
- 3 In the device list, select **Philips BT2600**.
 - If a message prompts for the permission for Bluetooth connection with **Philips BT2600**, confirm it.
 - If a password is required, enter **0000** and then confirm.↳ The speaker beeps twice and the Bluetooth indicator turns to solid blue when the Bluetooth connection is successful.

- If you fail to search for **Philips BT2600**, press and hold **Ⓜ** /MULTIPAIR to enter pairing mode.

Bluetooth indicator

The LED indicator on the top indicates the status of Bluetooth connection.

Indicator	Bluetooth connection
Flashing blue quickly	Pairing
Flashing blue slowly	Connecting or waiting for connection
Solid blue	Connected

Pair and connect a second device


You can pair and connect a maximum of two Bluetooth-enabled devices to this product actively at the same time.

- 1 Press and hold **Ⓜ** /MULTIPAIR to enter pairing mode.
 - ↳ The Bluetooth indicator flashes blue quickly.
 - ↳ The speaker beeps twice.
- 2 Pair and connect a second device to the speaker.
 - If two devices are connected with speaker, you can play music from any of the connected devices, music playback from another device will be paused.

Note

- If you want to pair a third device, press and hold **Ⓜ** /MULTIPAIR until you hear a double beep to disconnect the first connected device and enter pairing mode.
- If no music is played after 15 minutes, the speaker goes to standby mode automatically for power saving.

Disconnect a device

- On your device, disable the Bluetooth connection with this product.
- Or, on this product, press and hold  when it is not during a call.

Note

- Before connecting another Bluetooth device, disconnect the current device first.

Reconnect a device

- For a paired Bluetooth device on which the automatic reconnection is enabled, this product reconnects with it once it is detected.
- For a paired Bluetooth device that does not support the automatic reconnection, reconnect it with this product manually.

Play audio via Bluetooth

Note



- If there is an incoming call on the connected mobile phone, audio play pauses.

After successful Bluetooth connection, play audio on the Bluetooth device.

- ↳ Audio streams from your Bluetooth device to the speaker

Control your phone call

After Bluetooth connection, you can control an incoming call with this speaker:

Button	Functions
	Press to answer an incoming call.
	During a call, press to end the current call.

Press and hold to reject an incoming call.

During a call, press and hold to transfer the phone call to your mobile.

When there is another incoming call during a call, you can

- press to end the current call and answer the another call.
- press twice to reject the another call.
- press and hold for two seconds to hang on the current call and answer the another call.

Note

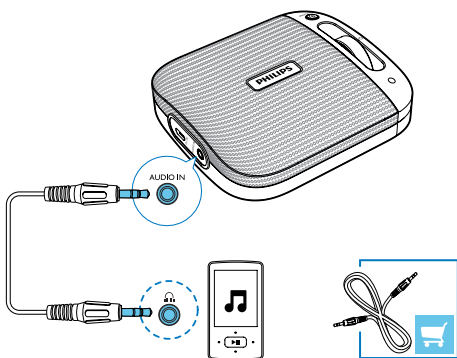
- You can talk through the microphone of the speaker.
- Music play pauses when there is an incoming call, and resumes when your phone call ends.

5 Listen to an external device

You can also listen to an external audio device, for example, MP3 player, through this product.

Note

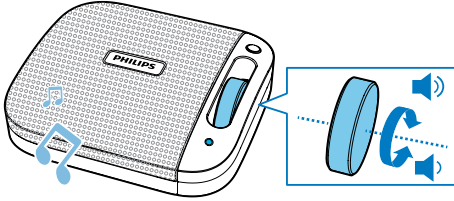
- Make sure that no device is streaming audio to the speaker via Bluetooth.



- 1 Rotate the knob to turn on the speaker.
- 2 Connect an audio input cable with 3.5mm plug on both ends between
 - the **AUDIO IN** socket on this product,
 - and
 - the headphone socket on the external device.
- 3 Play audio on the external device (refer to its user manual).

6 Adjust volume

Rotate the volume knob to increase or decrease the volume.



7 Product information

Note

- Product information is subject to change without prior notice.

General information

Power Supply (through USB socket)	5 V \equiv 1 A
Built-in Battery	Lithium battery (750 mAh, 3.7V)
Dimensions - Main Unit (W x H x D)	101 X 34 X 101 mm
Weight - Main Unit	0.22 kg

Bluetooth

Bluetooth specification	V3.0
Supported profiles	HFP, HSP, A2DP
Range	10 m (Free space)

Amplifier

Rated Output Power	3 W RMS
Signal to Noise Ratio	> 60 dBA
AUDIO IN	650 mV RMS, 22 kOhm

8 Troubleshooting



Warning

- Never remove the casing of this product.

To keep the warranty valid, never try to repair the product yourself.

If you encounter problems when using this device, check the following points before requesting service. If the problem remains unsolved, go to the Philips Web page (www.philips.com/support). When you contact the Consumer Care, make sure that the product is nearby and the model number and serial number are available.

General

No power

- Recharge your speaker.

No sound

- Adjust volume on this product.
- Adjust volume on the connected device.
- Make sure that your Bluetooth device is within the effective operational range.

No response from the speaker

- Restart the speaker.

About Bluetooth device

The audio quality is poor after connection with a Bluetooth-enabled device.

- The Bluetooth reception is poor. Move the device closer to this product or remove any obstacle between them.

Cannot connect with the device.

- The Bluetooth function of the device is not enabled. Refer to the user manual of the device for how to enable the function.
- This product is already connected with another Bluetooth-enabled device. Disconnect that device and then try again.

The paired device connects and disconnects constantly.

- The Bluetooth reception is poor. Move the device closer to this product or remove any obstacle between them.
- For some devices, Bluetooth connection may be deactivated automatically as a power-saving feature. This does not indicate any malfunction of this product.

9 Notice

Any changes or modifications made to this device that are not expressly approved by WOOX Innovations may void the user's authority to operate the equipment.

Compliance

CE 0890

This product complies with the radio interference requirements of the European Community.

Hereby, WOOX Innovations declares that this product is in compliance with the essential requirements and other relevant provisions of Directive 1999/5/EC. You can find the Declaration of Conformity on www.philips.com/support.

Care of the environment

Disposal of your old product and battery



Your product is designed and manufactured with high quality materials and components, which can be recycled and reused.



This symbol on a product means that the product is covered by European Directive 2012/19/EU.



This symbol means that the product contains a built-in rechargeable battery covered by European Directive 2013/56/EU which cannot be disposed of with normal household waste. We strongly advise you to take your product to an official collection point or a Philips service centre to have a professional remove the rechargeable battery.

Inform yourself about the local separate collection system for electrical and electronic products and rechargeable batteries. Follow local rules and never dispose of the product and rechargeable batteries with normal household waste. Correct disposal of old products and rechargeable batteries helps prevent negative consequences for the environment and human health.

Environmental information

All unnecessary packaging has been omitted. We have tried to make the packaging easy to separate into three materials: cardboard (box), polystyrene foam (buffer) and polyethylene (bags, protective foam sheet.) Your system consists of materials which can be recycled and reused if disassembled by a specialized company. Please observe the local regulations regarding the disposal of packaging materials, exhausted batteries and old equipment.

Trademark notice

The Bluetooth® word mark and logos are registered trademarks owned by Bluetooth SIG, Inc. and any use of such marks by WOOX Innovations is under license.

Copyright

2015 © WOOX Innovations Limited. All rights reserved.

Philips and the Philips' Shield Emblem are registered trademarks of Koninklijke Philips N.V. and are used by WOOX Innovations Limited under license from Koninklijke Philips N.V.' Specifications are subject to change without notice. WOOX reserves the right to change products at any time without being obliged to adjust earlier supplies accordingly.

This equipment has been tested and found to comply with the limits for a Class B digital device, pursuant to Part 15 of the FCC Rules. These limits are designed to provide reasonable protection against harmful interference in a residential installation. This equipment generates, uses and can radiate radio frequency energy and, if not installed and used in accordance with the instructions, may cause harmful interference to radio communications. However, there is no guarantee that interference will not occur in a particular installation.

If this equipment does cause harmful interference to radio or television reception, which can be determined by turning the equipment off and on, the user is encouraged to try to correct the interference by one or more of the following measures:

- Reorient or relocate the receiving antenna.
- Increase the separation between the equipment and receiver.
- Connect the equipment into an outlet on a circuit different from that to which the receiver is connected.
- Consult the dealer or an experienced radio/TV technician for help.

This device complies with Industry Canada license-exempt RSS standard(s). Operation is subject to the following two conditions: (1) this device may not cause interference, and (2) this device must accept any interference, including interference that may cause undesired operation of the device.

Le présent appareil est conforme aux CNR d'Industrie Canada applicables aux appareils radio exempts de licence. L'exploitation est autorisée aux deux conditions suivantes : (1) l'appareil ne doit pas produire de brouillage, et (2) l'utilisateur de l'appareil doit accepter tout brouillage radioélectrique subi, même si le brouillage est susceptible d'en compromettre le fonctionnement.



2015 © WOOX Innovations Limited. All rights reserved.

Philips and the Philips' Shield Emblem are registered trademarks of Koninklijke Philips N.V. and are used by WOOX Innovations Limited under license from Koninklijke Philips N.V.

000000000000

