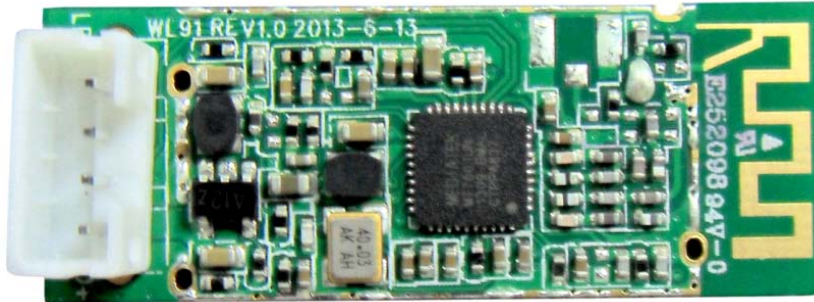


Specification



1. Description:



WL91 is a network adapter Module that complies the latest IEEE 802.11n standards and the wireless transferring rate of WL91 is up to 150Mbps--3X data transmitting rate of the traditional 11g wireless products. The WL91 is also backwards compliant with all 802.11b/g wireless equipment. By taking the advanced low power dissipation & economization design, it makes the network adapter module is a green & energy-efficient product. It also features advanced wireless encryption and easy installation. WL91 also supports WiFi/Bluetooth coexistence. With the latest IEEE 802.11w standard, WL91 keep the users' WiFi away from the attacking of DoS, elevate the security of users' wireless network. With the Auto-calibration technology, WL91 calibrates the frequency offset, RF power and etc. by itself automatically to provide a more stable and fluent network for users. With the WMM, WMM PS technology, makes the multi-media applications-like 3D online game, HD video stream etc more fluent. With good signal strength, strong anti-interference, stable wireless performance, fast data transferring rate, WL91 may be the best choice for your Internet wireless access service.



2. Product Highlight:

- Support automatic date adjustment, adjust the wireless transmitting rate automatically
- Support WiFi/Bluetooth coexistence
- Support WMM, WMM PS
- Support IEEE 802.11w standard
- Comply the IEEE 802.11N , the wireless rate is up to 150Mbps.
- Compliant with IPTV set top box and internet television
- Supports ad-hoc and infrastructure modes
- Seamlessly compatible with 802.11b/g/n products

Specification

- Advanced Security: Supports 64/128 WEP, WPA/WPA2, WPA-PSK/WPA2-PSK (TKIP/AES)
- Using the seamless roaming technology, ensure the wireless connection is high efficient and steady
- Using the advanced low power dissipation & economization design, make sure the network adapter is more green & energy efficient
- Support soft AP for helping others to share your Internet service without wireless AP or wireless router



3. Product Specification:

Model	WL91
IC	MT7601
Protocol	IEEE802.11g,IEEE802.11n,IEEE802.11b
Data rate	11n: 135/121.5/108/81/54/40.5/27/13.5Mbps (HT40); 65/58.5/52/39/26/19.5/13/6.5Mbps (HT20) 11g: 54/48/36/24/18/12/9/6M 11b: 11/5.5/2/1M
antenna	On-Board/I-pex connector(optional)
Frequency	2.4~2.4835GHz
RF Power	11b: 18dBm+/-2 dBm @EVM -20dBm 11g: 16dBm+/-2 dBm @EVM -26dBm 11n: 14dBm+/-2 dBm @EVM -28dBm
Sensitivity@PER	150M: -65dBm@10% PER 130M: -65dBm@10% PER 108M: -65dBm@10% PER 54M: -68dBm@10% PER 11M: -82dBm@8% PER 6M: -85dBm@10% PER 1M: -90dBm@8% PER
Interface Type	1*4PIN with USB2.0 Standard
Environment	Operating Temperature: 0°C~40°C (32°F~104°F) Storage Temperature: -20°C~70°C (-40°F~158°F) Operating Humidity: 10%~90% non-condensing Storage Humidity: 10%~90% non-condensing
Power consumption	1.2W(Max)
Dimension(mm)	35*13.5*0.8mm
Certification	Customer defined

Federal Communication Commission Interference Statement

This equipment has been tested and found to comply with the limits for a Class B digital device, pursuant to Part 15 of the FCC Rules. These limits are designed to provide reasonable protection against harmful interference in a residential installation. This equipment generates, uses and can radiate radio frequency energy and, if not installed and used in accordance with the instructions, may cause harmful interference to radio communications. However, there is no guarantee that interference will not occur in a particular installation. If this equipment does cause harmful interference to radio or television reception, which can be determined by turning the equipment off and on, the user is encouraged to try to correct the interference by one of the following measures:

- Reorient or relocate the receiving antenna.
- Increase the separation between the equipment and receiver.
- Connect the equipment into an outlet on a circuit different from that to which the receiver is connected.
- Consult the dealer or an experienced radio/TV technician for help.

FCC Caution:

Any changes or modifications not expressly approved by the party responsible for compliance could void the user's authority to operate this equipment.

This device complies with Part 15 of the FCC Rules. Operation is subject to the following two conditions:

- (1) This device may not cause harmful interference, and
- (2) This device must accept any interference received, including interference that may cause undesired operation.

FCC Radiation Exposure Statement:

This equipment complies with FCC radiation exposure limits set forth for an uncontrolled environment. This transmitter module must not be co-located or operating in conjunction with any other antenna or transmitter.

This End equipment should be installed and operated with a minimum distance of 20 centimeters between the radiator and your body.

IMPORTANT NOTE:

In the event that these conditions can not be met (for example certain laptop configurations or co-location with another transmitter), then the FCC authorization is no longer considered valid and the FCC ID can not be used on the final product. In these circumstances, the OEM integrator will be responsible for re-evaluating the end product (including the transmitter) and obtaining a separate FCC authorization.

End Product Labeling

The final end product must be labeled in a visible area with the following:

“Contains FCC ID:2AANL-WL91”.

Manual Information to the End User

The OEM integrator has to be aware not to provide information to the end user regarding how to install or remove this RF module in the user's manual of the end product which integrates this module.

Canada Statement

This device complies with Industry Canada licence-exempt RSS standard(s). Operation is subject to the following two conditions: (1) this device may not cause interference, and (2) this device must accept any interference, including interference that may cause undesired operation of the device.

Le présent appareil est conforme aux CNR d'Industrie Canada applicables aux appareils radio exempts de licence. L'exploitation est autorisée aux deux conditions suivantes : (1) l'appareil ne doit pas produire de brouillage, et (2) l'utilisateur de l'appareil doit accepter tout brouillage radioélectrique subi, même si le brouillage est susceptible d'en compromettre le fonctionnement.

Caution Exposure:

This device meets the exemption from the routine evaluation limits in section 2.5 of RSS102 and users can obtain Canadian information on RF exposure and compliance. Le dispositif répond à l'exemption des limites d'évaluation de routine dans la section 2.5 de RSS102 et les utilisateurs peuvent obtenir des renseignements canadiens sur l'exposition aux RF et le respect.

The final end product must be labelled in a visible area with the following:

The Industry Canada certification label of a module shall be clearly visible at all times when installed in the host device, otherwise the host device must be labelled to display the Industry Canada certification number of the module, preceded by the words "Contains transmitter module", or the word "Contains", or similar wording expressing the same meaning, as follows:

Contains transmitter module IC: 10616A-WL91

This End equipment should be installed and operated with a minimum distance of 20 centimeters between the radiator and your body.

Cet équipement devrait être installé et actionné avec une distance minimum de 20 centimètres entre le radiateur et votre corps.

The end user manual shall include all required regulatory information/warning as show in this manual.