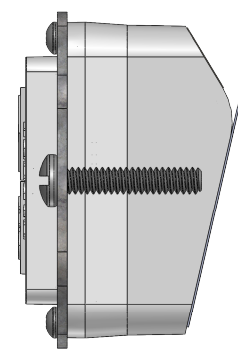
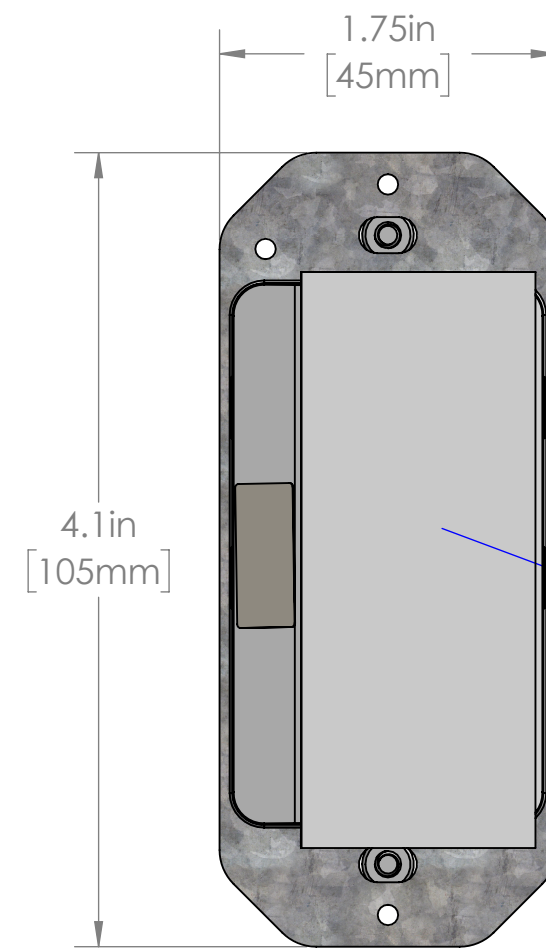
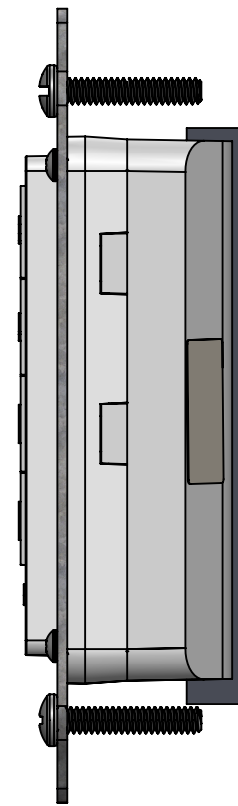
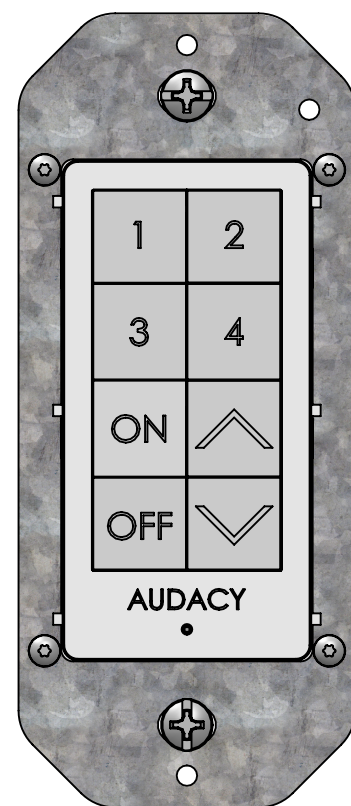
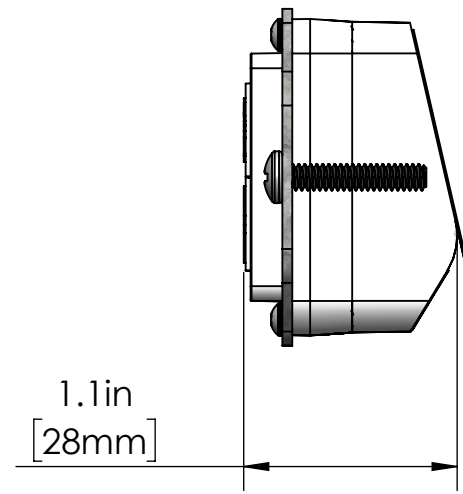


COMPLETE REFERENCE BILL OF MATERIALS

ITEM NO.	PART NUMBER	DESCRIPTION	QTY.
1	KB-1236	ELE BOM AND BOARD ASSY.	1
1.1	LB-3075	BARE BOARD	1
2	KB-2887	BACK HOUSING	1
3	KB-2886	HOUSING, FRONT FACEPLATE LOGO	1
4	KB-1242	TACTILE BUTTON, ON	1
5	KB-1140	TACTILE BUTTON, 3	1
6	KB-1238	TACTILE BUTTON, 1	1
7	KB-1239	TACTILE BUTTON, 2	1
8	KB-1241	TACTILE SWITCH, 4	1
9	KB-1244	TACTILE BUTTON, ARROW UP	1
10	KB-1245	TACTILE SWITCH, ARROW DOWN	1
11	KB-1243	TACTILE BUTTON, OFF	1
12	KB-1246	BUTTON SUPPORT, EIGHT BUTTON SWITCH	1
13	LB-2845	METAL PLATE	1
14	358.057	6-32 x 0.75" COMBO #2 DRIVE	2
15	358.049	#2-28 x 0.50" TORX T7 PAN HEAD	4
16	ND-8960	SERIAL LABEL, TSS1204	1
17	ND-8389	MANUFACTURER DATE CODE ID	1



**AUDACY**™

M/N: TSS1204

3.6 VOLTS Patent Pending

FCC ID: 2AAMXTSS1204

IC: 11250A-TSS1204

S/N: 32000001

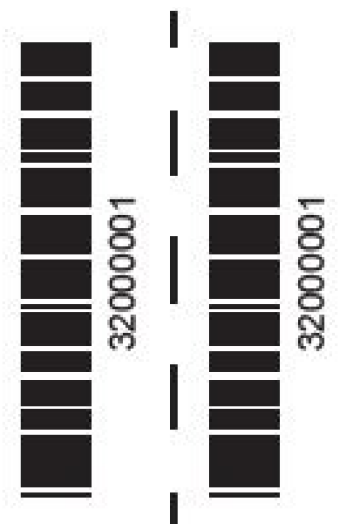
NOT FOR USE IN INSTALLATIONS EXCEEDING 347VAC



LISTED Energy Management Equipment E369679

This device complies with Part 15 of the FCC Rules. Operation is subject to the following two conditions: (1) this device may not cause harmful interference, and (2) this device must accept any interference received, including interference that may cause undesired operation.

IDEAL INDUSTRIES, INC.



<p>DATE BY ENG ECN NO. SYM ISS</p>						<p><b>PROPRIETARY DESIGN - "CONFIDENTIAL"</b>  <small>ALL INFORMATION CONTAINED ON THIS DRAWING IS CONFIDENTIAL AND THE SOLE PROPERTY OF IDEAL INDUSTRIES, INC. UNAUTHORIZED COPYING OR DISTRIBUTION OF THIS DOCUMENT IS STRICTLY PROHIBITED.</small></p>			<p>TITLE: EIGHT BUTTON ASSEMBLY</p>		
						<p><b>UNLESS OTHERWISE SPECIFIED:</b>  <small>THIS DRAWING BASED ON ANS Y 14.5 SURFACE FINISH 12.5 ON MACHINED SURFACES DIMENSIONS SYMMETRICAL ABOUT CENTER LINE WHERE APPLICABLE ON PLATED PARTS ALL DIMENSIONAL LIMITS APPLY AFTER PLATING DIMENSIONS OF MOLDED PARTS ARE FOR FINISHED PART. NO ALLOWANCE HAS BEEN MADE FOR SHRINK.</small></p>			<p>59-ML1200</p>		
						<p><b>HAZARDOUS SUBSTANCE CONTROL:</b>  <small>ANY PRODUCT OR PART THAT CONTAINS LEAD HEXAVALENT CHROMIUM MERCURY CADMIUM POLYBROMINATED BIPHENYLS POLYBROMINATED DIPHENYL ETHERS PENTABROMO DIPHENYL ETHER OR OCTABROMO DIPHENYL ETHER MUST BE IN FULL COMPLIANCE WITH EUROPEAN UNION 2002/95/EC &amp; 2003/11/EC DIRECTIVES.</small></p>			<p>MATL:</p>		
						<p>DO NOT SCALE DRAWING. TOLERANCES UNLESS OTHERWISE SPECIFIED  <small>.00 ±.02 ANGLES ±0°30' ±.005</small></p>			<p>FINISH:</p>		
						<p>PART VOLUME  <b>CUBIC INCHES</b></p>			<p>SCALE: 1:2 DRW BY: AP CKDBY: APP BY:</p>		
						<p>IDEAL INDUSTRIES, INC.                  SYCAMORE, ILLINOIS, U.S.A.</p>			<p>DATE: 8/1/2019 DRWG. NO. IA-6369</p>		