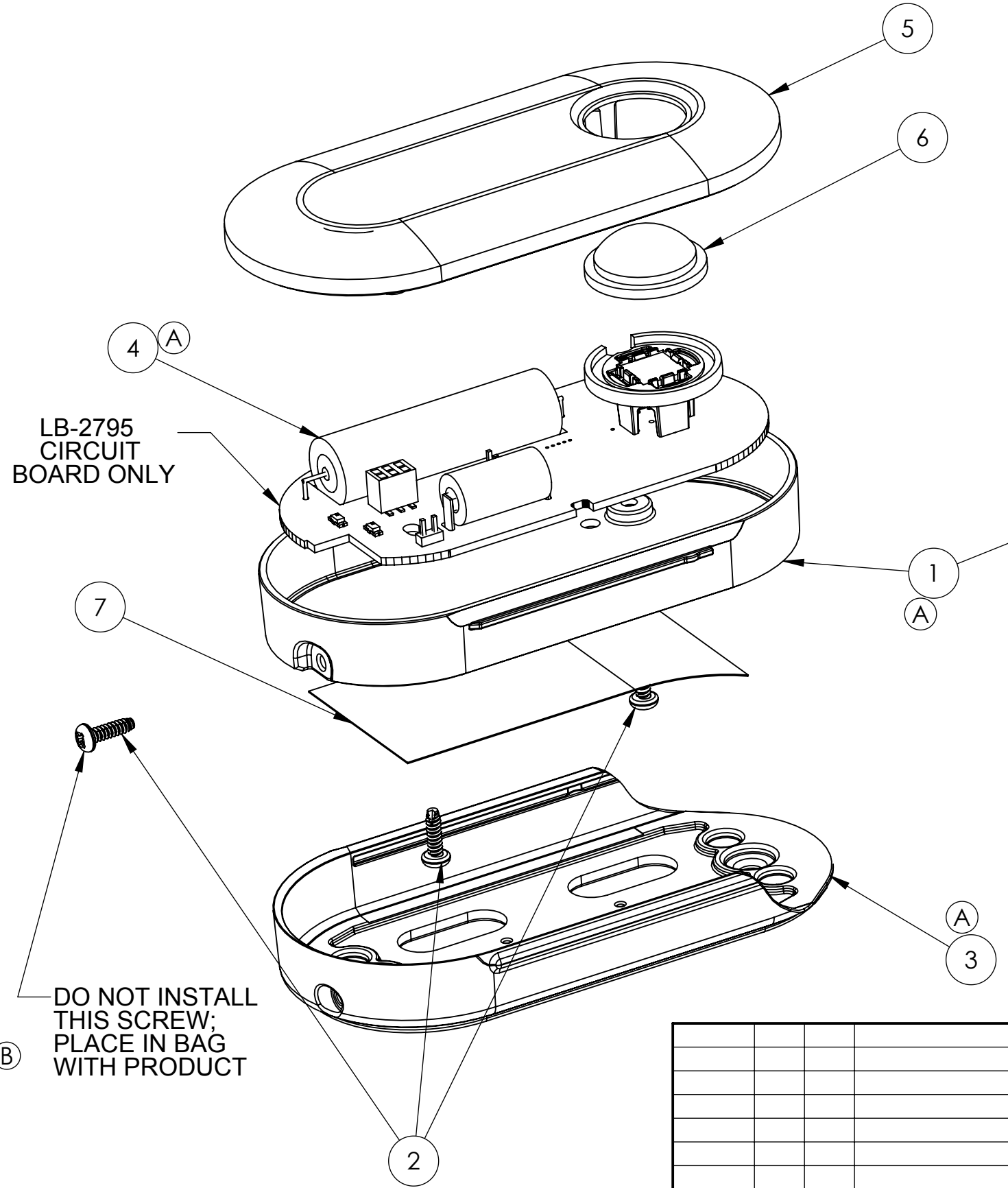


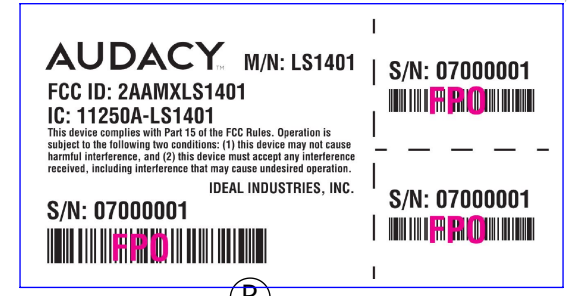
ITEM NO.	PART NUMBER	DESCRIPTION	QTY.
1	IA-5963	HOUSING, BACK	1
2	358.047	4-24 X 3/8 PAN HD SCREW	3
3	IA-5964	FLAT WALL CRADLE	1
A 4	LB-2810_02	PC BOARD ASSEMBLY	1
5	IA-5975_01	HOUSING COVER	1
6	KB-9891_02	LIGHT SENSOR LENS	1
7	ND-8354	FCC PRODUCT LABEL	1



LB-2795
CIRCUIT
BOARD ONLY

DO NOT INSTALL
THIS SCREW;
PLACE IN BAG
WITH PRODUCT

DO NOT COVER HOLE WITH
THE PART OF THE LABEL
ADHERED TO THE PRODUCT



					-- PROPRIETARY DESIGN - "CONFIDENTIAL" -- <small>ALL INFORMATION CONTAINED ON THIS DRAWING IS CONFIDENTIAL AND THE SOLE PROPERTY OF IDEAL INDUSTRIES, INC. UNAUTHORIZED COPYING OR DISTRIBUTION OF THIS DOCUMENT IS STRICTLY PROHIBITED.</small>		TITLE: ASSEMBLY, LIGHT SENSOR	
					-- UNLESS OTHERWISE SPECIFIED: <small>THIS DRAWING BASED ON ANSI Y 14.5 SURFACE FINISH 125 ✓ ON MACHINED SURFACES. DIMENSIONS SYMMETRICAL ABOUT CENTER LINE WHERE APPLICABLE ON PLATED PARTS. ALL DIMENSIONAL LIMITS APPLY AFTER PLATING. DIMENSIONS OF MOLDED PARTS ARE FOR FINISHED PART. NO ALLOWANCE HAS BEEN MADE FOR SHRINK.</small>		MATERIAL: SEE COMPONENT PARTS	
					-- HAZARDOUS SUBSTANCE CONTROL: <small>ANY PRODUCT OR PART THAT CONTAINS LEAD, HEXAVALENT CHROMIUM, MERCURY, CADMIUM, POLYBROMINATED BIPHENYLS, POLYBROMINATED DIPHENYL ETHERS, PENTABROMO-DIPHENYL ETHER, OR OCTABROMO-DIPHENYL ETHER MUST BE IN FULL COMPLIANCE WITH EUROPEAN UNION 2002/95/EC & 2003/11/EC DIRECTIVES.</small>		FINISH:	
					DO NOT SCALE DRAWING <small>- ALL DIMENSIONS IN INCHES. - REMOVE ALL BURRS. - BREAK ALL SHARP EDGES.</small>		SCALE: 1:1	
					TOLERANCES UNLESS OTHERWISE SPECIFIED <small>.00 ±.02 ANGLES ±0°30' .000 ±.005</small>		DRW. BY: AJT	
					PART VOLUME CUBIC INCHES		CKDBY:	
					IDEAL INDUSTRIES, INC. SYCAMORE, ILLINOIS, U.S.A.		APP. BY:	
					IDEAL		DATE: 6/16/16	
DATE	BY	ENG	ECN NO.	SYM	ISS	DRWG. NO. IA-6186		