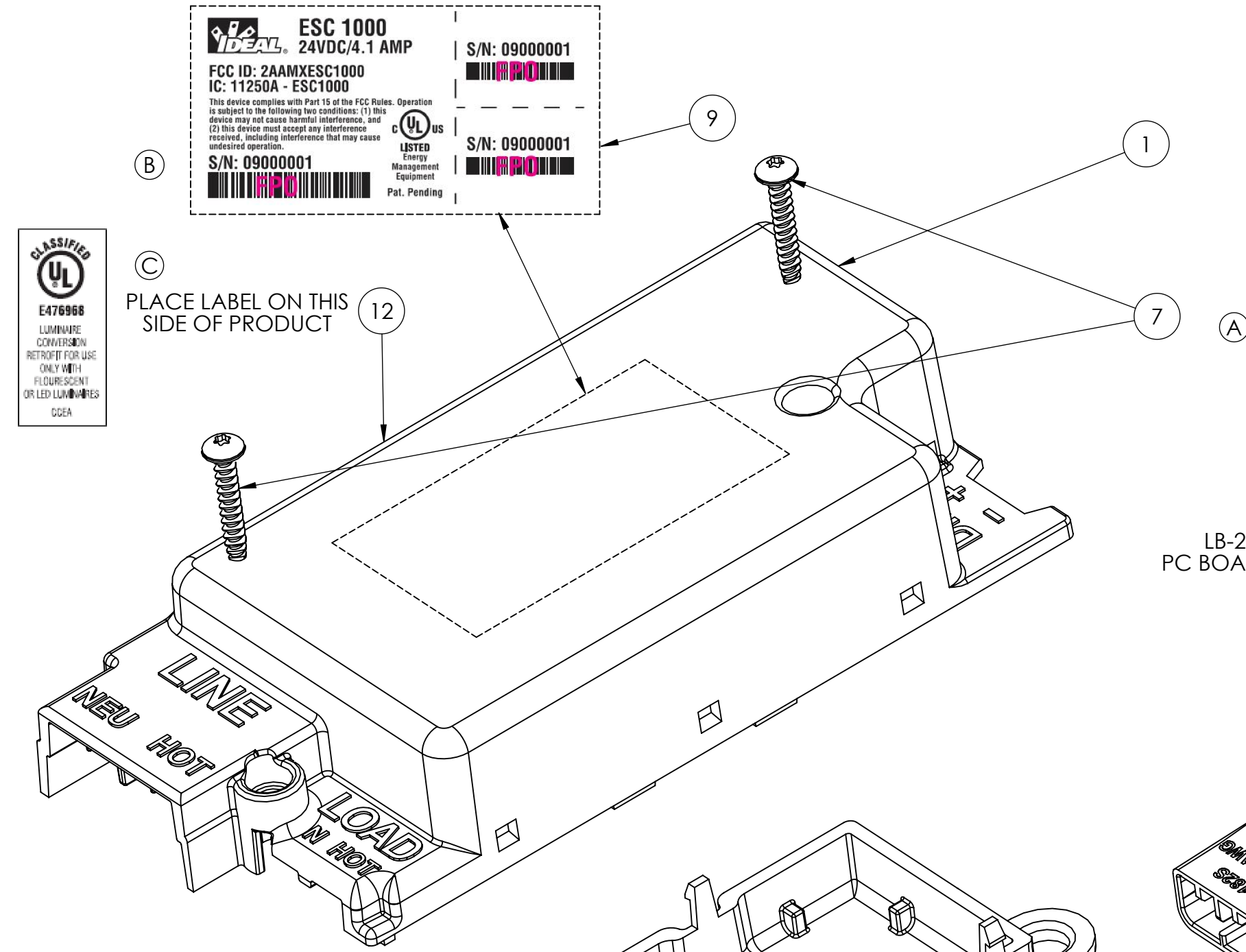


ITEM NO.	PART NUMBER	DESCRIPTION	QTY.
1	IA-5954	HOUSING, TOP	1
2	IA-5961	PC BOARD ASSEMBLY	1
3	LB-2811	3M DOUBLE SIDED TAPE	1
4	KB-9731	ASSY, DAISY CHAIN CONNECTOR	1
5	H-4121	MALE SUB-ASSEMBLY	1
6	H-4120	FEMALE SUB-ASSEMBLY	1
7	358.049	SCREW, #2-28 X 1/2" PH TORX	2
8	IA-5955	HOUSING, BOTTOM	1
9	ND-7962	LABEL	1
10	LB-2813	NITTO-DENKO DOUBLE SIDED TAPE	1
11	LB-2812	.005 THK. POLYCARBONATE FILM	1
12	ND-8167	SCL1000CCEA LABEL	1



LB-2794
PC BOARD ONLY

NOTES:

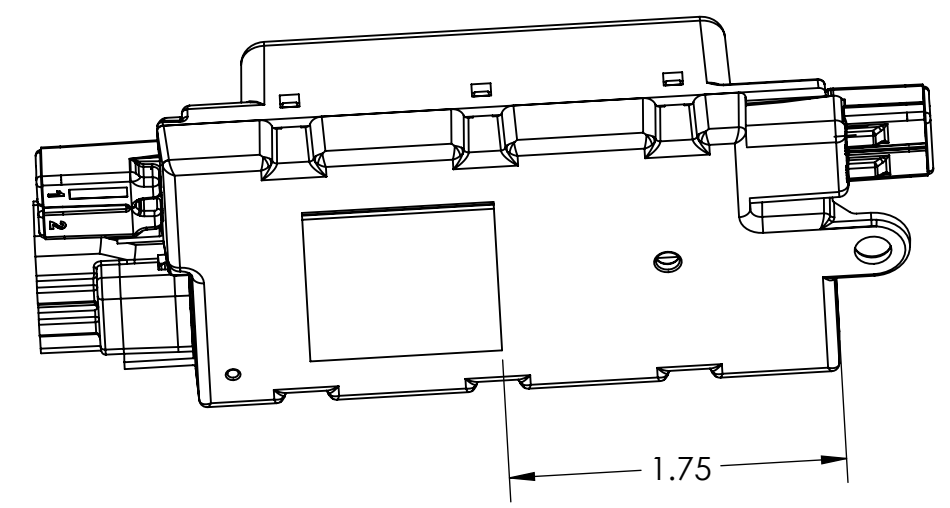
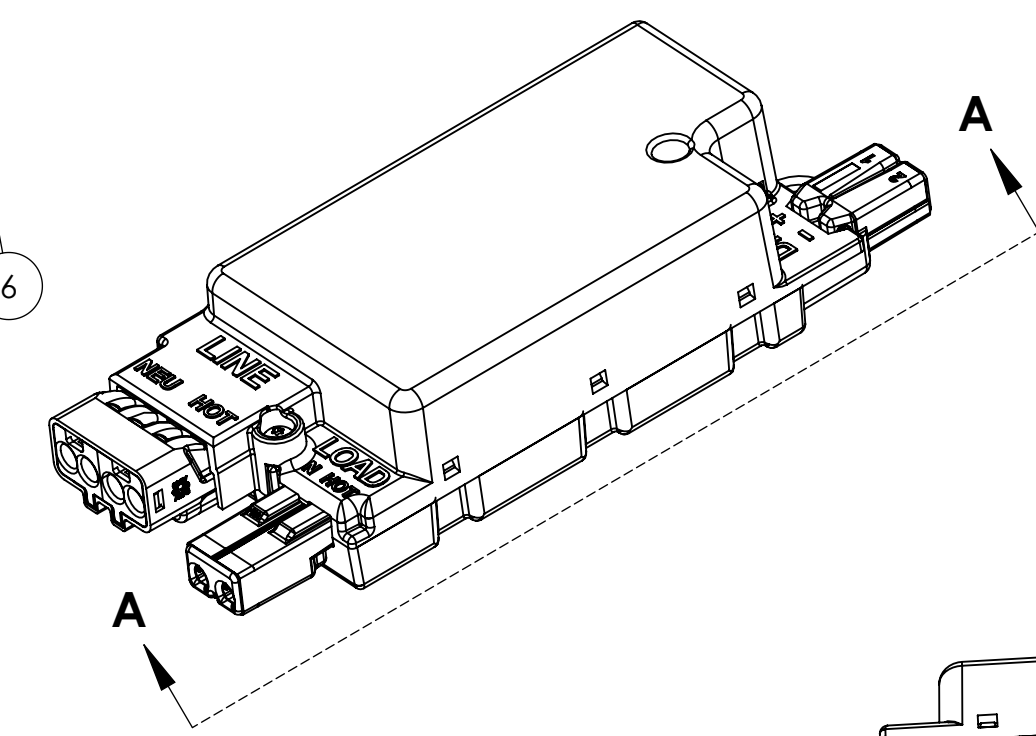
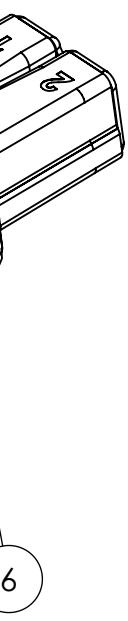
1. ANTENNA TO BE PULLED THROUGH HOLE IN HOUSING BOTTOM.
2. LEADS FROM THIS END TO GO INTO SLOTS IN HOUSING BOTTOM FIRST. PCB TO THEN BE SNAPPED INTO PLACE.
3. ENSURE ALL SNAPS ARE ENGAGED.
4. PLACE DOUBLE SIDED TAPE, PC FILM, & SECOND DOUBLE SIDED TAPE PER VIEW A-A. TRIM TOP CORNER OF ITEM #4 TO ALLOW REMOVAL OF BACKING; APPROXIMATELY 1" SQUARE.
5. TORQUE FASTENERS TO 2-4 IN-LBS.
6. MFG TO ADD DATE TO EXTERIOR OF PRODUCT.

SEE NOTE #2

SEE NOTE #3

SEE NOTE #1

SEE NOTE #4



VIEW A-A
SEE NOTE #4

-- PROPRIETARY DESIGN - "CONFIDENTIAL" --						TITLE: ASSY, AC LIGHTING SMART CONNECTOR	
ALL INFORMATION CONTAINED ON THIS DRAWING IS CONFIDENTIAL AND THE SOLE PROPERTY OF IDEAL INDUSTRIES, INC. UNAUTHORIZED COPYING OR DISTRIBUTION OF THIS DOCUMENT IS STRICTLY PROHIBITED.						MATERIAL: SEE COMPONENT PARTS	
-- UNLESS OTHERWISE SPECIFIED: --						FINISH:	
THIS DRAWING BASED ON ANSI Y 14.5 SURFACE FINISH 125. ✓ ON MACHINED SURFACES DIMENSIONS SYMMETRICAL ABOUT CENTER LINE WHERE APPLICABLE ON PLATED PARTS ALL DIMENSIONAL LIMITS APPLY AFTER PLATING DIMENSIONS OF MOLDED PARTS ARE FOR FINISHED PART. NO ALLOWANCE HAS BEEN MADE FOR SHRINK.						SCALE: 2:1	
-- HAZARDOUS SUBSTANCE CONTROL --						DRW BY: MH	
ANY PRODUCT OR PART THAT CONTAINS LEAD HEXAVALENT CHROMIUM MERCURY CADMIUM POLYBROMINATED BIPHENYLS POLYBROMINATED DIPHENYL ETHERS PENTABROMO DIPHENYL ETHER OR OCTABROMO DIPHENYL ETHER MUST BE IN FULL COMPLIANCE WITH EUROPEAN UNION 2002/95/EC & 2003/11/EC DIRECTIVES.						DATE: 7-08-13	
DO NOT SCALE DRAWING. TOLERANCES UNLESS OTHERWISE SPECIFIED						PART VOLUME: CUBIC INCHES	
* ALL DIMENSIONS IN INCHES						APP BY:	
* REMOVE ALL BURRS.						DRWG. NO. IA-5962	
* BREAK ALL SHARP EDGES.						DATE: 7-08-13	
10-14-15	JES	SNK	22064	C	4	IDEAL INDUSTRIES, INC.	
4-22-15	JES	CDG	22005	B	3	SYCAMORE, ILLINOIS, U.S.A.	
5-14-14	MH	CG	ECN 21879	A	2		
12-04-13	MH	SNK	EPRN 1143	-	1		
DATE	BY	ENG	ECN NO.	SYM	ISS		