

Shenzhen Yishengbang Technology Co., LTD

Sample acceptance letter

SPECIFICATION FOR APPROVAL

he name of the company : Shenzhen NaSida Industry and Trade Co., LTD

The material code: _____

specifications: NI10125

Admitted to date: _____

The name of the supplier: Shenzhen Yishengbang Technology Co., LTD

Supplier standard type number: WIFI MAIN:SLK-NSD-2516B5-R-100IV-B

WIFI AUX:SLK-NSD-2620B-R-430IV-G

Admit signature

For acceptance by the contractor						Shenzhen Nasda Industry and Trade Co., LTD									
Rf Engineer		audit		approval		Rf Engineer		audit		approval					
Shi Lian Chen		Zhen Huang		Mei Cai Lin											
Signed and sealed								Signed and sealed							
date				2023-2-9				date							
instructions: <input type="checkbox"/> accept <input type="checkbox"/> Conditional acceptance															
note:															

The name of the supplier: Shenzhen Yishengbang Technology Co., LTD

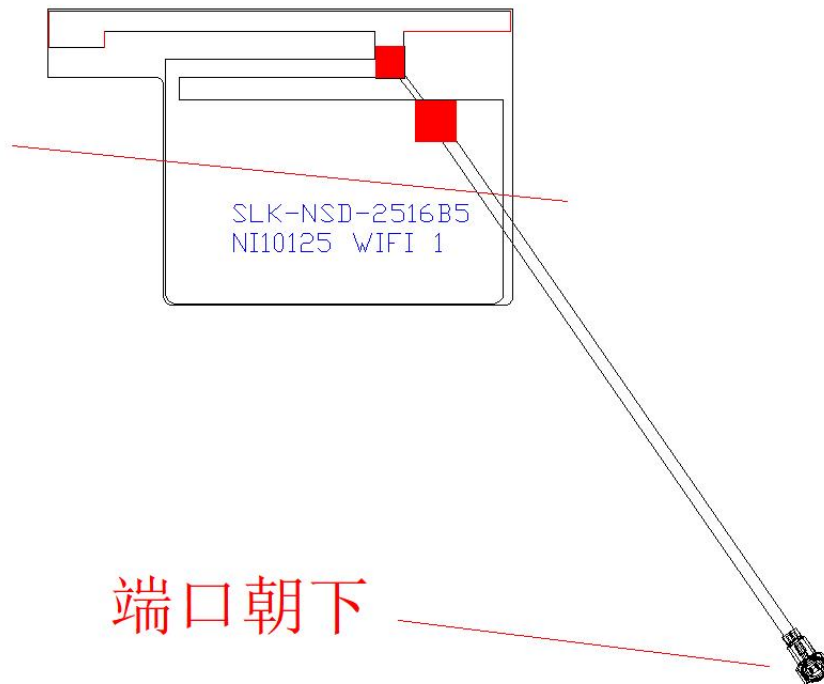
Supplier address : 101, Building C, Shenzhen Qianwan Hard Technology Industrial Park, Bao 'an District, Shenzhen

telephone: 18025305599

telephone: 18666299104

WIFI 1

1. Explanation of Product number :



Product Code:

- (1) Customer:NaSida
- (2) Antenna Name:WIFI antenna (WIFIMAIN Antenna)
- (3) Connector:1.13black line, 100MM, fourth generation terminal

2. Features

- *Stable and reliable in performances
- *Compact size
- *RoHS compliance

3. Applications

- * IEEE802.11 (b/g/n/a)
- * Hand-held devices when WIFI (802.11b/g/n/a) functions are needed

4. Description

Holy bond's FPC antenna series are specially designed for WIFI (802.11b/g/n/a) applications. Based on Holy bond's proprietary design and processes, this FPC antenna has excellent stability and sensitivity to consistently provide high signal reception efficiency.

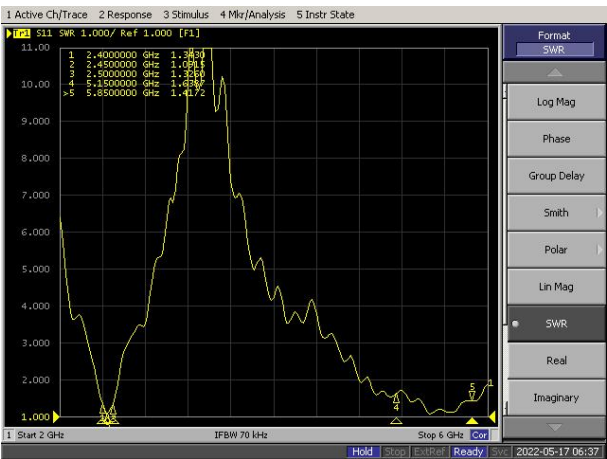
5. Electrical Specifications

5-1

Characteristics	Specifications	Unit
Outline Dimensions	25.43x16.19x0.12	mm
Center Frequency	2.4-2.5+5.15-5.85	GHz
Bandwidth(under-10dB return loss)	130min	MHz
VSWR	3max	

5-2.

VSWR



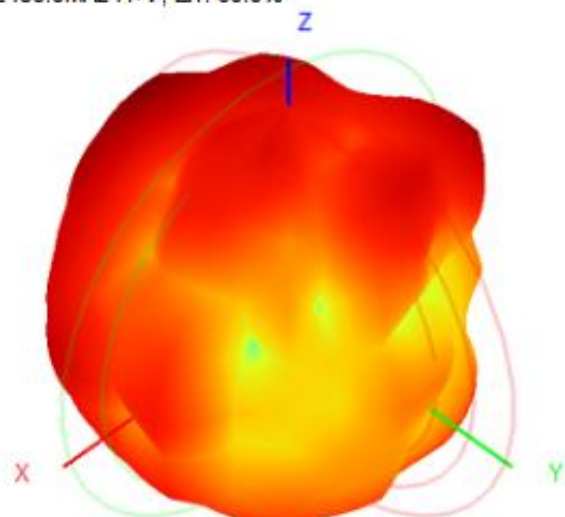
S11



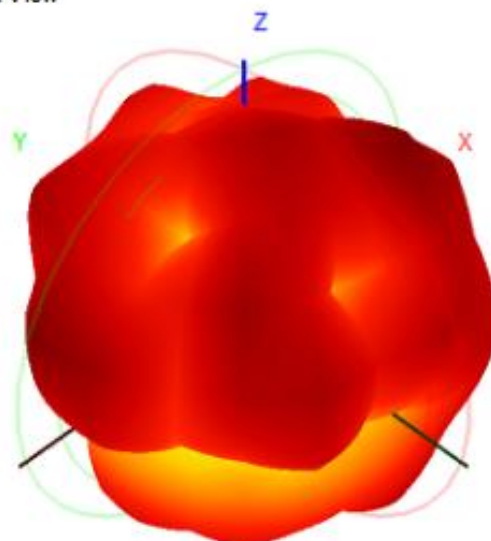
5-3.WIFI +BT Antenna Gain/Efficiency/Radiation Pattern of 3D

Frequency (MHz)	2400.0	2410.0	2420.0	2430.0	2440.0	2450.0	2460.0	2470.0	2480.0	2490.0	2500.0	5150.0	5350.0	5500.0	5650.0	5850.0
Efficiency (dBi)	-2.22	-2.16	-2.16	-2.10	-2.09	-2.22	-2.37	-2.54	-2.48	-2.34	-2.59	-1.92	-2.10	-1.86	-2.01	-1.92
Gain (dBi)	3.18	2.90	2.88	3.07	3.23	3.14	2.97	3.04	2.95	2.92	2.90	5.80	4.85	5.25	6.02	7.49
Efficiency (%)	59.99	60.83	60.85	61.67	61.84	60.02	57.95	55.73	56.53	58.32	55.07	64.31	61.71	65.11	62.98	64.24

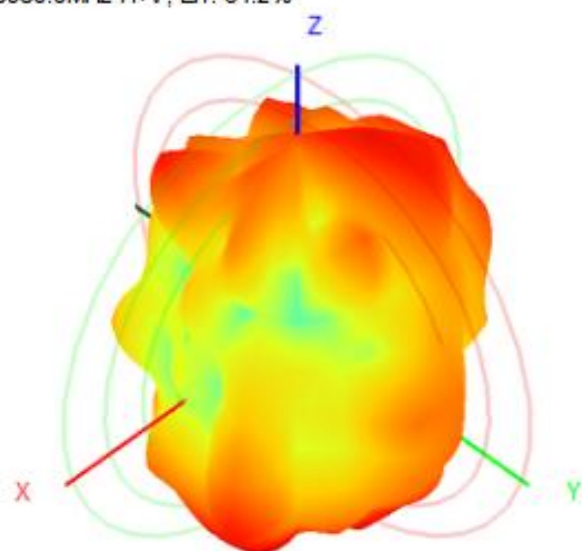
2450.0MHz H+V, Eff: 60.0%



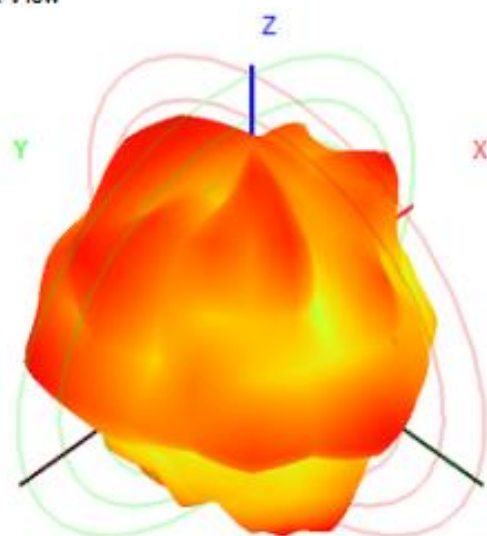
Back View



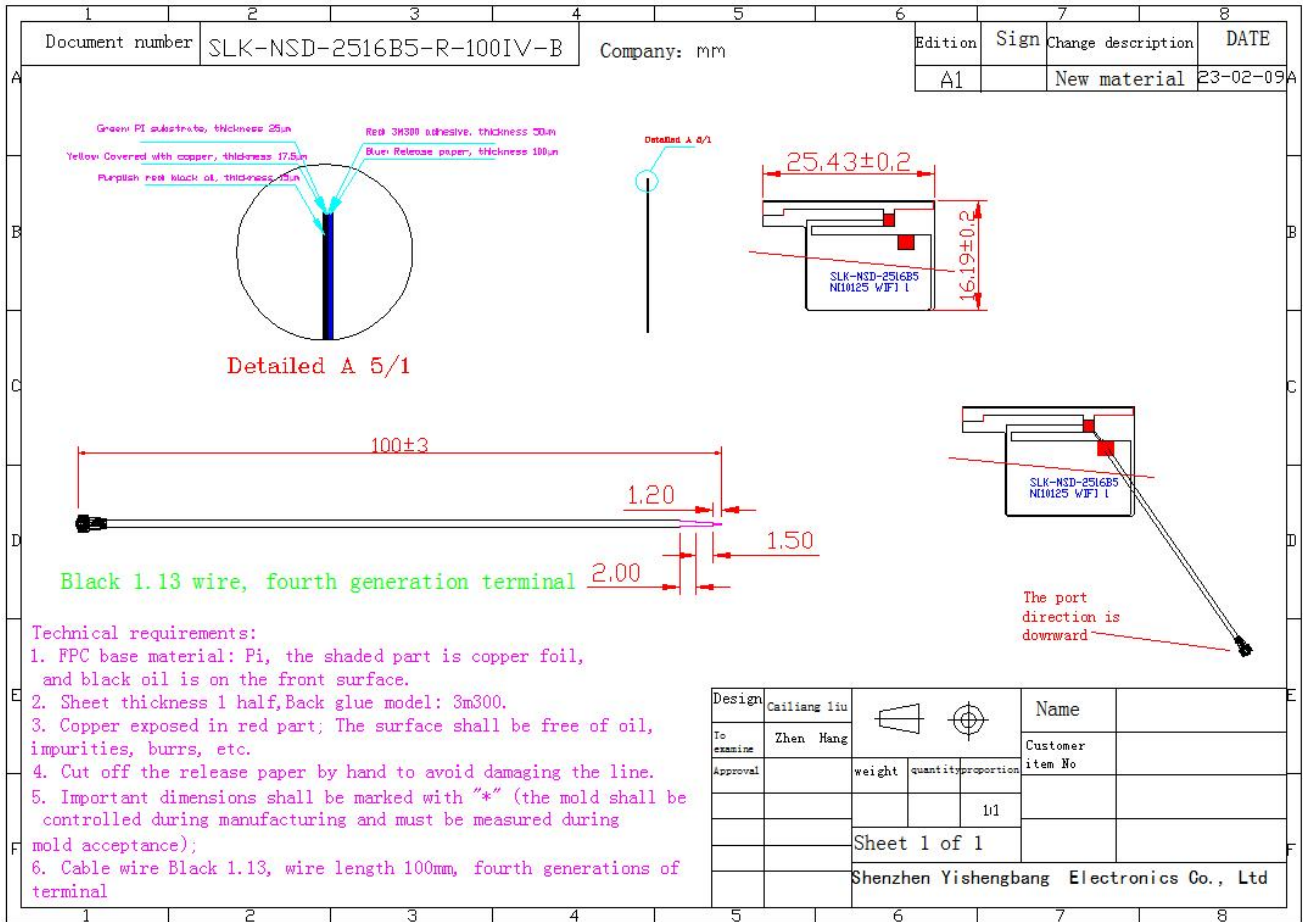
5850.0MHz H+V, Eff: 64.2%



Back View

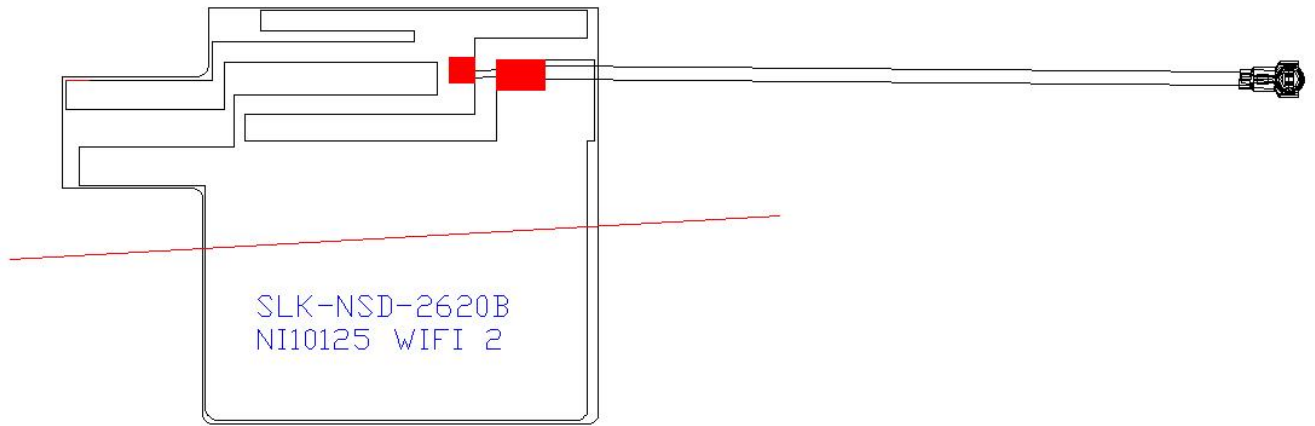


6. Antenna Dimensions (unit: mm)



WIFI 2

1. Explanation of Product number :



Product Code:

- (1) Customer:NaSida
- (2) Antenna Name:WIFI 天线 (WIFI Antenna)
- (3) Connector:1.13Grey line 430MM fourth generation terminal

2. Features

- *Stable and reliable in performances
- *Compact size
- *RoHS compliance

3. Applications

- * IEEE802.11 (b/g/n/a)
- * Hand-held devices when WIFI (802.11b/g/n/a) functions are needed

4. Description

Holy bond’s FPC antenna series are specially designed for WIFI (802.11b/g/n/a) applications. Based on Holy bond’s proprietary design and processes, this FPC antenna has excellent stability and sensitivity to consistently provide high signal reception efficiency.

5. Electrical Specifications

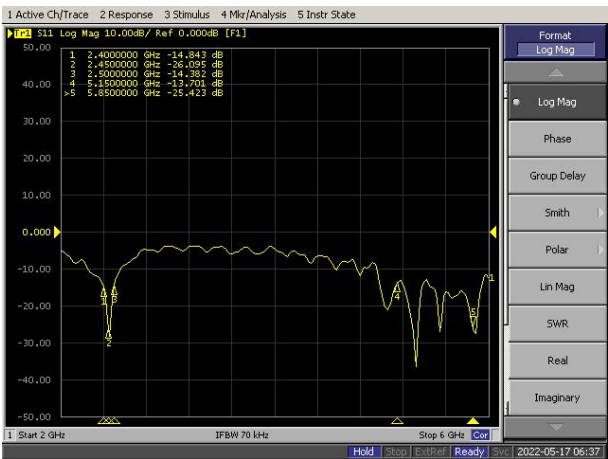
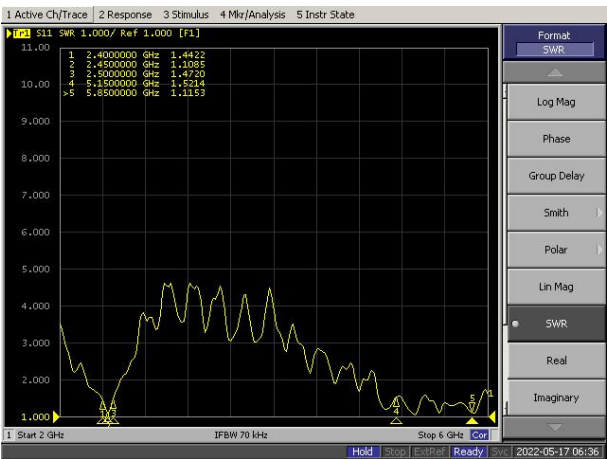
5-1

Characteristics	Specifications	Unit
Outline Dimensions	25.88x20.09x0.12	mm
Center Frequency	2.4-2.5+5.15-5.85	GHz
Bandwidth(under-10dB return loss)	130min	MHz
VSWR	3max	

5-2.

VSWR

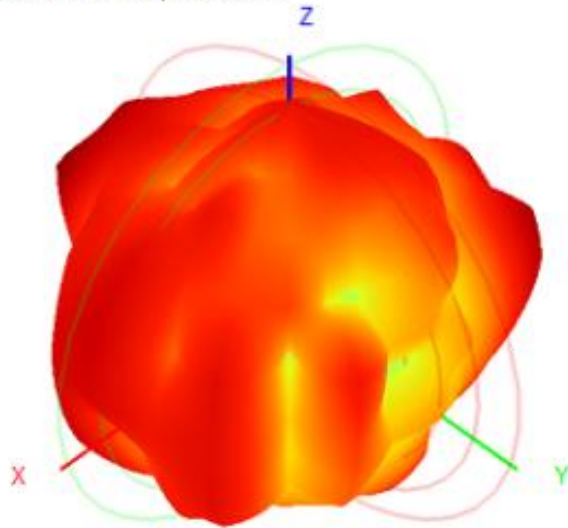
S11



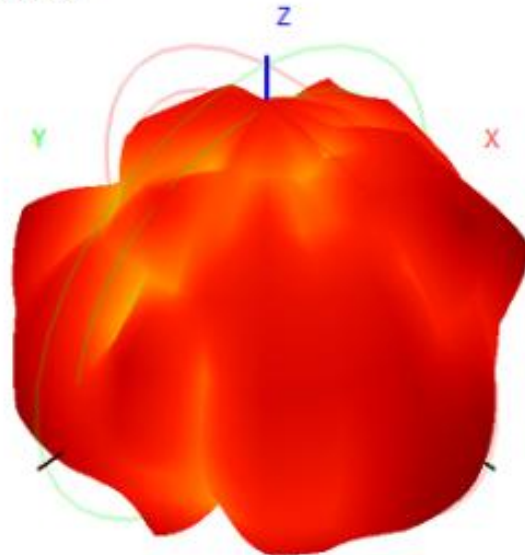
5-3.WIFI +BT Antenna Gain/Efficiency/Radiation Pattern of 3D

Frequency (MHz)	2400.0	2410.0	2420.0	2430.0	2440.0	2450.0	2460.0	2470.0	2480.0	2490.0	2500.0	5150.0	5350.0	5500.0	5650.0	5850.0
Efficiency (dBi)	-3.03	-3.02	-3.16	-2.92	-2.99	-3.03	-3.13	-3.23	-3.14	-3.17	-3.44	-3.33	-3.31	-3.75	-3.12	-3.69
Gain (dBi)	2.19	2.36	2.25	2.50	2.29	2.18	1.87	1.59	1.94	1.97	1.36	2.79	1.65	1.25	2.33	4.68
Efficiency (%)	49.83	49.93	48.32	51.01	50.22	49.76	48.60	47.53	48.48	48.25	45.33	46.37	46.63	42.13	48.67	42.73

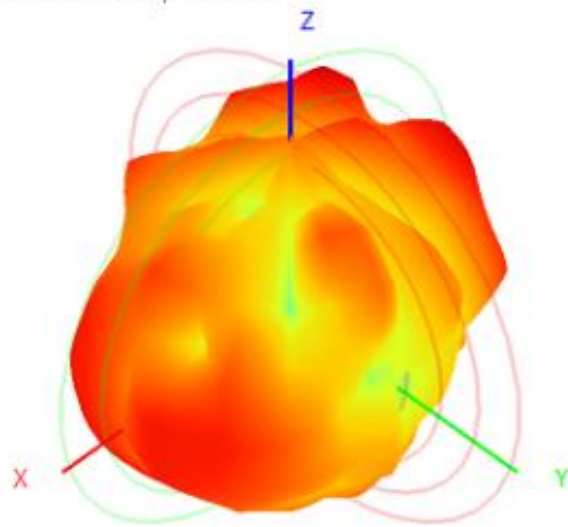
2450.0MHz H+V, Eff: 49.8%



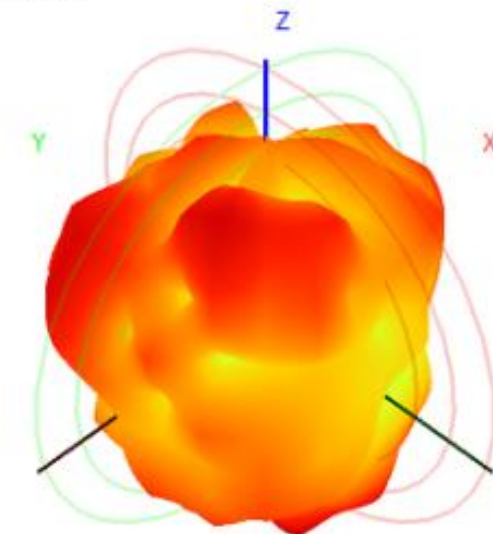
Back View



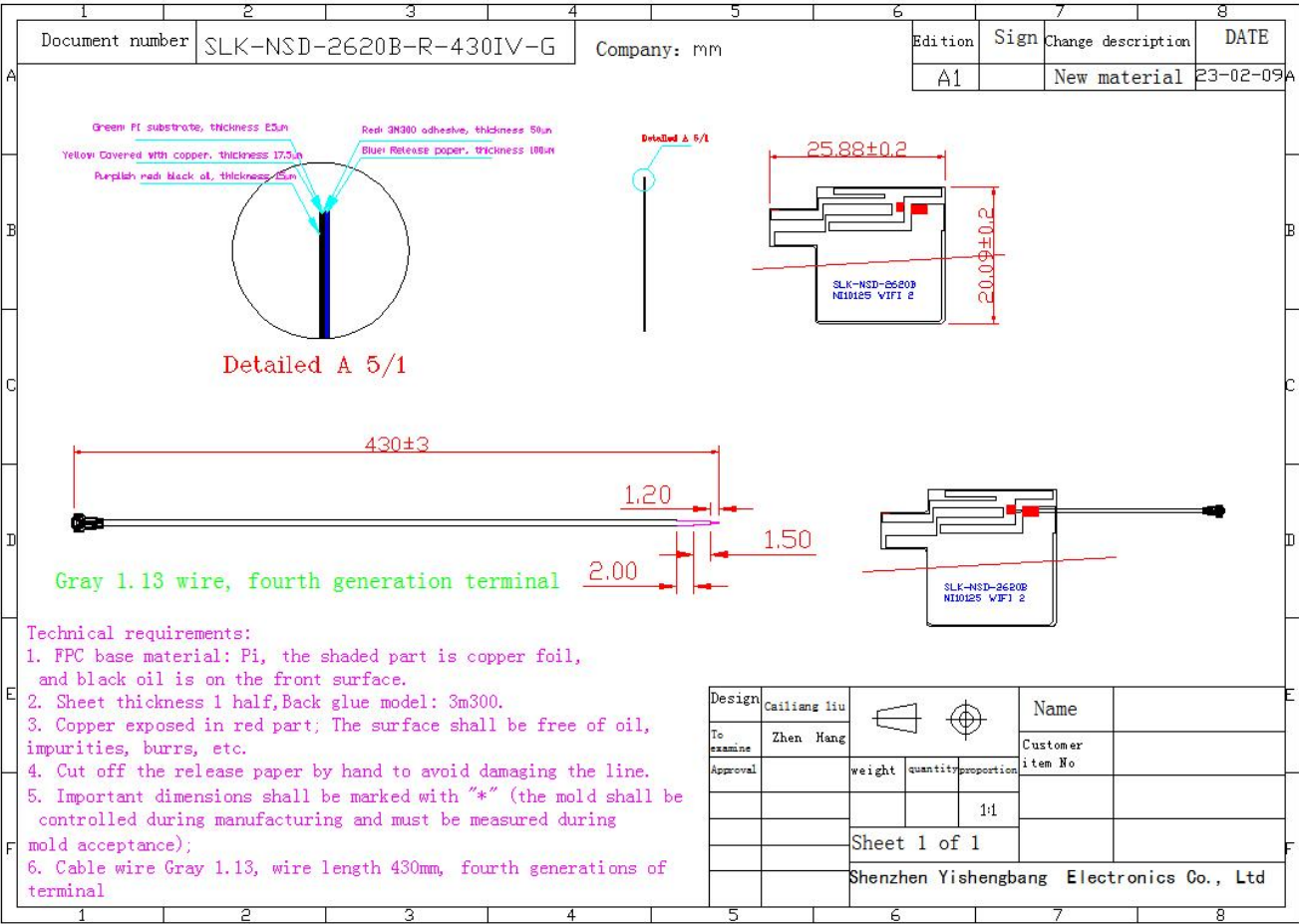
5850.0MHz H+V, Eff: 42.7%



Back View



6. Antenna Dimensions (unit: mm)



7. Antenna Picture

