

Shenzhen Yishengbang Technology Co., LTD

Sample acceptance letter

SPECIFICATION FOR APPROVAL

The name of the company : Shenzhen NaSida Industry and Trade Co., LTD

The material code: _____

specifications: NJ10034

Admitted to date: _____

The name of the supplier: Shenzhen Yishengbang Technology Co., LTD

Supplier standard type number: WIFIMAIN:SLK-NSD-2516V1-L-300IV-B

WIFIAUX:SLK-NSD-2516V2-R-490IV-G

Admit signature

For acceptance by the contractor			Shenzhen NaSida Industry and Trade Co., LTD		
Rf Engineer	audit	approval	Rf Engineer	audit	approval
Shi Lian Chen	Zhen Huang	Mei Cai Lin			
Signed and sealed			Signed and sealed		
date	2023-2-9		date		
instructions: <input type="checkbox"/> accept <input type="checkbox"/> Conditional acceptance					
note:					

The name of the supplier: Shenzhen Yishengbang Technology Co., LTD

Supplier address : 101, Building C, Shenzhen Qianwan Hard Technology Industrial Park, Bao 'an District, Shenzhen

telephone: 18025305599

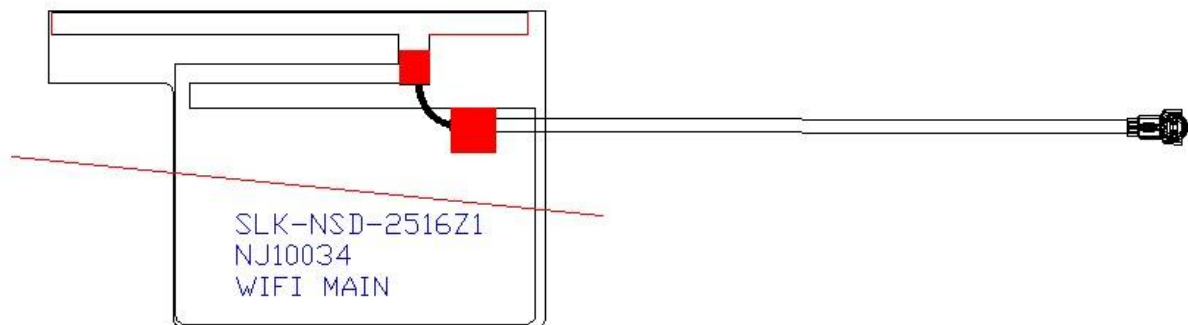
telephone: 18666299104

WIFIMAIN Antenna (2516Z1)

1. Explanation of Product number :

S L K - N S D - 2 5 1 6 Z 1 - R - 3 3 0 I V - B

1 2 3 4 5



Product Code:

(1) Customer:

NSD: 纳斯达

(2) Project:

2516Z1: SLK-NSD-2516Z1 (WIFI MAIN antenna)

(3) Welding Position

R: Right

(4) Cable Length:

330IV: 330*0.81MM 四代端子

(5) Cable Color

B: Black

2. Features

- *Stable and reliable in performances
- *Compact size
- *RoHS compliance

3. Applications

- * IEEE802.11 (a/b/g/n)
- * Hand-held devices when WIFI (802.11a/b/g/n) functions are needed

4. Description

Holy bond's FPC antenna series are specially designed for WIFI (802.11a/b/g/n) applications. Based on Holy bond's proprietary design and processes, this FPC antenna has excellent stability and sensitivity to consistently provide high signal reception efficiency.

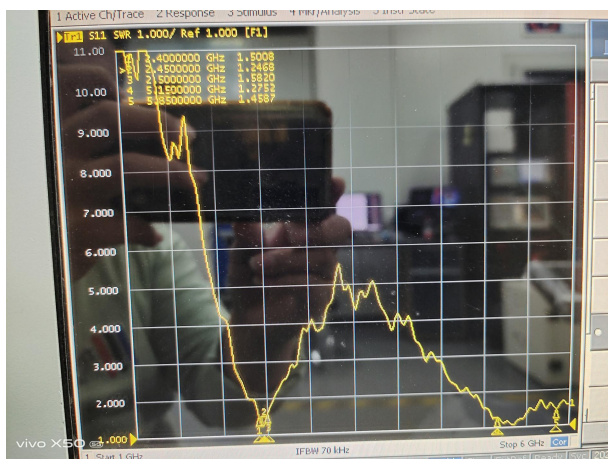
5. Electrical Specifications

5-1

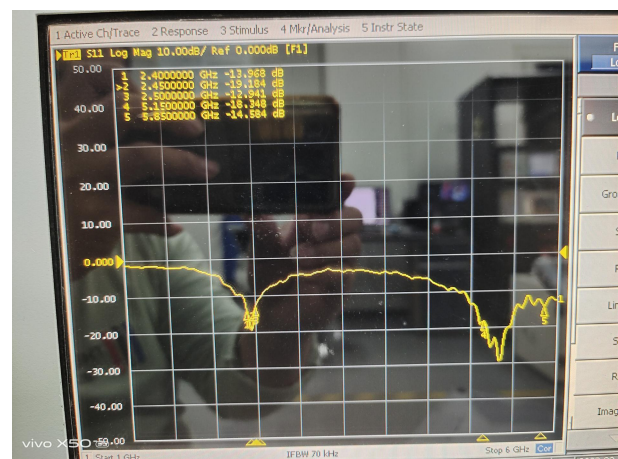
Characteristics	Specifications	Unit
Outline Dimensions	25.43x16.19x 0.12	mm
Center Frequency	2.4-2.5+5.15-5.85	GHz
Bandwidth(under-10dB return loss)	130min	MHz
VSWR	3max	

5-2.

VSWR



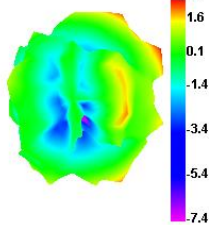
S11



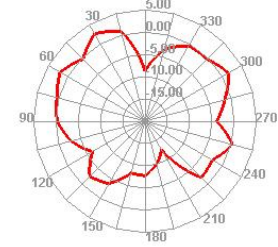
5-3.WIFI +BT Antenna Gain/Efficiency/Radiation Pattern of 3D

Freq (MHz)	Effi (%)	Effi (dB)	Gain (dBi)
2400	58.87	-2.3	3.19
2410	54.15	-2.66	2.79
2420	53.74	-2.7	2.76
2430	49.98	-3.01	2.39
2440	53.95	-2.68	2.71
2450	52.82	-2.77	2.63
2460	51.01	-2.92	2.38
2470	49.73	-3.03	2.3
2480	50.35	-2.98	2.25
2490	52.96	-2.76	2.53
2500	53.01	-2.76	2.65
5150	39.83	-4	1.5
5350	43.08	-3.66	1.58
5550	46.12	-3.36	2.5
5750	46.56	-3.32	1.84
5850	40.89	-3.88	1.69

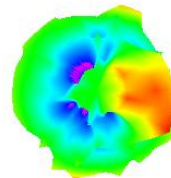
2450.000MHz



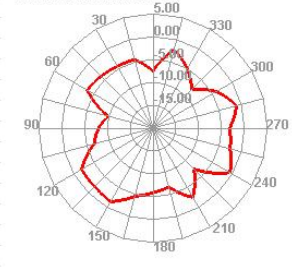
2450.000MHz H



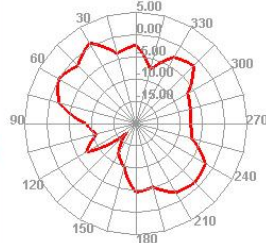
5850.000MHz



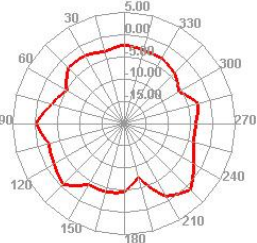
5850.000MHz H



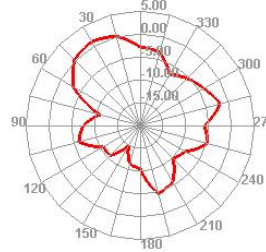
2450.000MHz E1



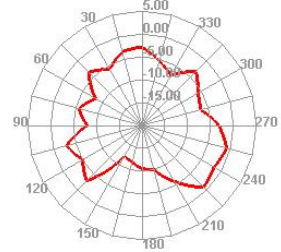
2450.000MHz E2



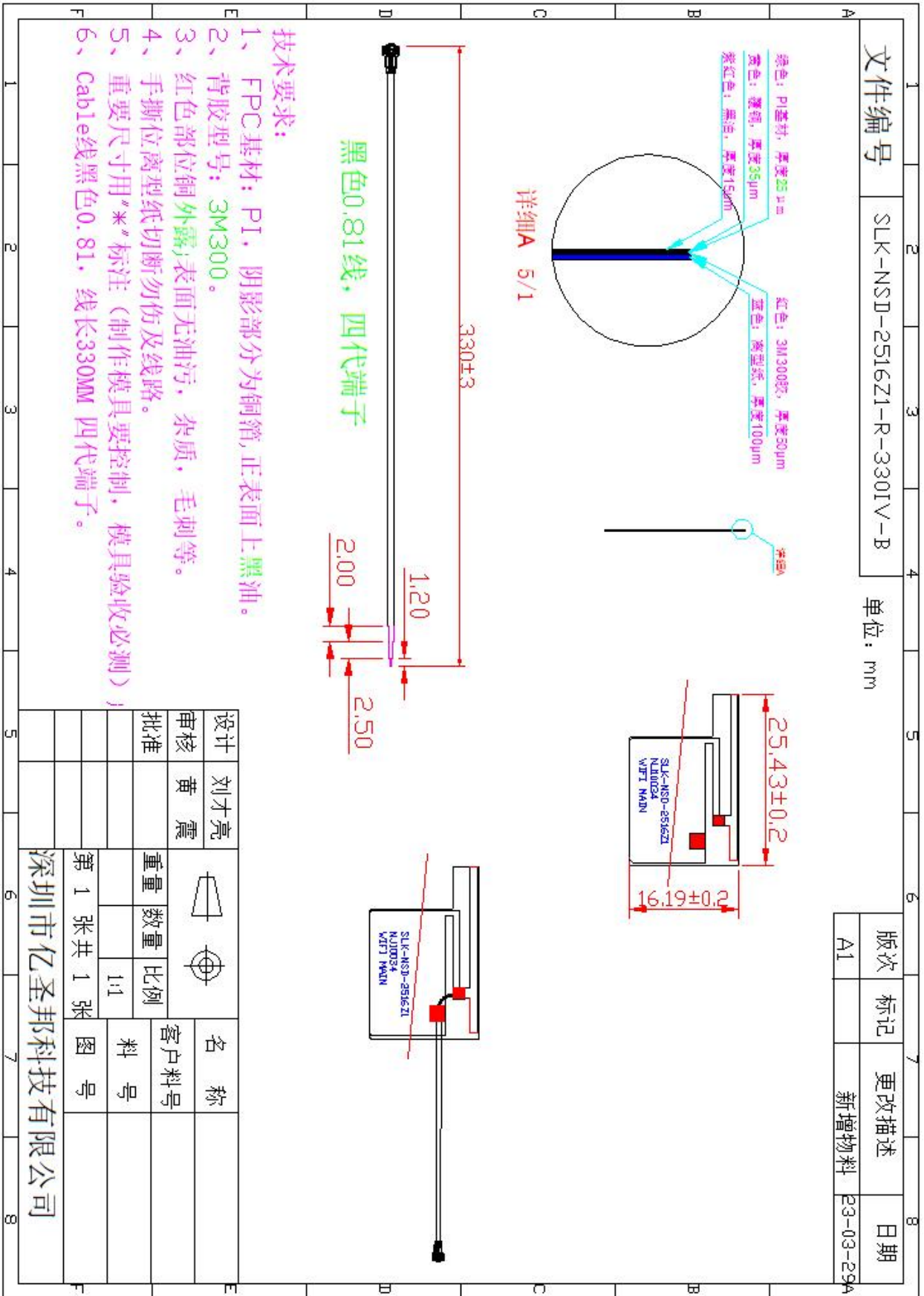
5850.000MHz E1



5850.000MHz E2



6. Antenna Dimensions (unit: mm)

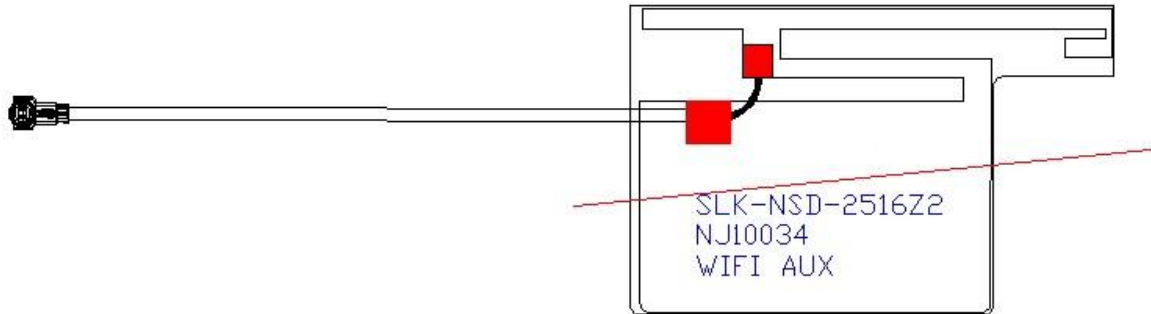


WIFI AUX Antenna (2516Z2)

1. Explanation of Product number :

S L K - N S D - 2 5 1 6 Z 2 - L - 2 8 0 I V - G

1 2 3 4 5



Product Code:

(1) Customer:

NSD: 纳斯达

(2) Project:

2516Z2: SLK-NSD-2516Z2 (WIFI AUX antenna)

(3) Welding Position

L: Left

(4) Cable Length:

280IV: 280*0.81MM 四代端子

(5) Cable Color

G: Gary

2. Features

- *Stable and reliable in performances
- *Compact size
- *RoHS compliance

3. Applications

- * IEEE802.11 (a/b/g/n)
- * Hand-held devices when WIFI (802.11a/b/g/n) functions are needed

Description

Holy bond's FPC antenna series are specially designed for WIFI (802.11a/b/g/n) applications. Based on Holy bond's proprietary design and processes, this FPC antenna has excellent stability and sensitivity to consistently provide high signal reception efficiency.

5. Electrical Specifications

5-1

Characteristics	Specifications	Unit
Outline Dimensions	25.43x16.19x 0.12	mm
Center Frequency	2.4-2.5+5.15-5.85	GHz
Bandwidth(under-10dB return loss)	130min	MHz
VSWR	3max	
Impedance	50	Ω
Polarization	Linear Polarization	

5-2.

VSWR

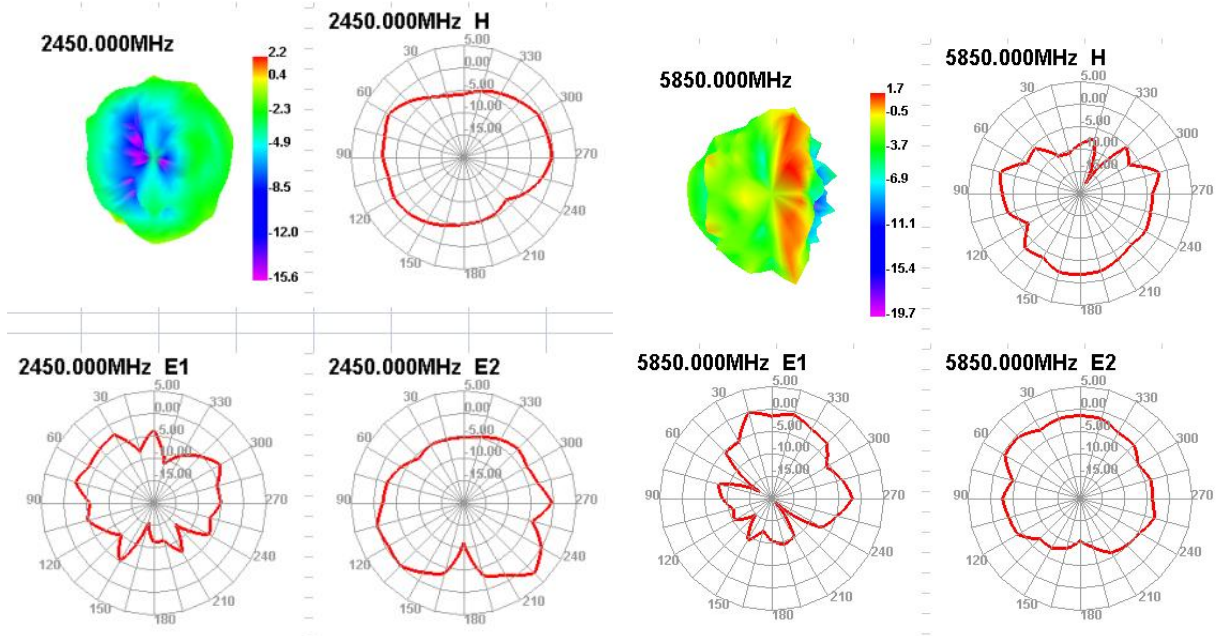


S11

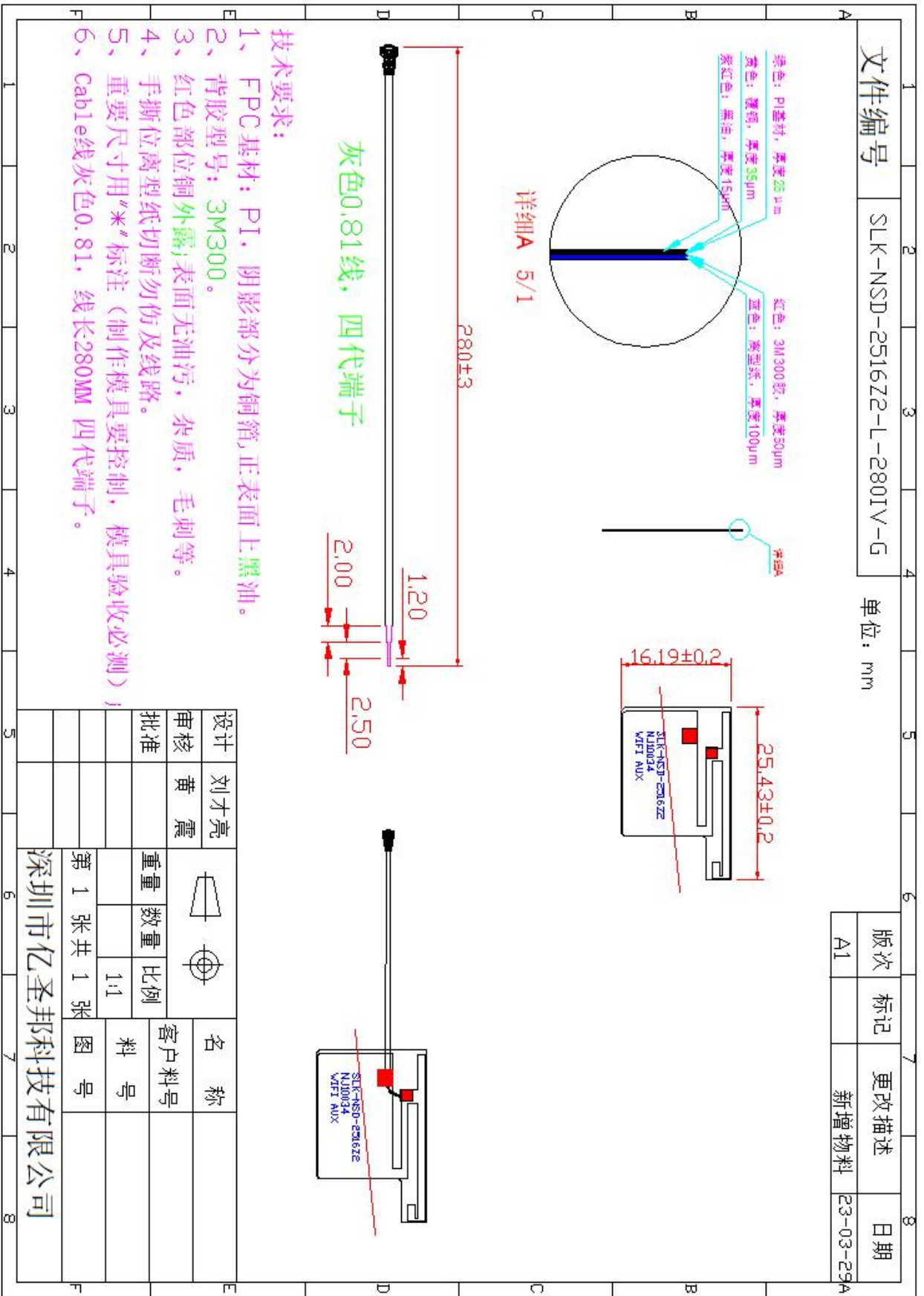


5-3.WIFI +BT Antenna Gain/Efficiency/Radiation Pattern of 3D

Freq (MHz)	Effi (%)	Effi (dB)	Gain (dBi)
2400	40.3	-3.95	1.59
2410	45.32	-3.44	2
2420	42.76	-3.69	1.69
2430	45.89	-3.38	2.06
2440	44.37	-3.53	1.9
2450	47.75	-3.21	2.16
2460	44.96	-3.47	1.92
2470	47.86	-3.2	1.95
2480	47.4	-3.24	1.68
2490	50.09	-3	1.71
2500	48.54	-3.14	1.61
5150	38.79	-4.11	0.94
5350	40.28	-3.95	2.25
5550	37.49	-4.26	2.35
5750	37.84	-4.22	2.62
5850	38.4	-4.16	1.69



6. Antenna Dimensions (unit: mm)



7. Antenna Picture



WIFI 主天线



WIFI 分集天线