

样品承认书

SPECIFICATION FOR APPROVAL

公司名称 (客户填写) : 码 (客户填写) :

物料代号 (客户填写) : NJ10204

规格型期 (客户填写) : _____

承认日 _____

供应商名称 (SLK 填写) : Shenzhen Yi Sheng Bang technology Co., LTD

供应商型号 (SLK 填写) : WIFI 1:SLK-NSD-2516C7-L-280IV-B

WIFI 2:SLK-NSD-2516C8-R-370IV-G

承 认 签 章

供 应 商 承 认

深圳市纳斯达工贸有限公司

工 程 师

审 核

批 准

工 程 师

审 核

批 准

范新竹

黄震

林美财

盖章签署

盖章签署

日

期

2023-12-27

日

期

批示: 接受 有条件接受

备注 (客户填写) :

供应商名称: 深圳市亿圣邦科技有限公司

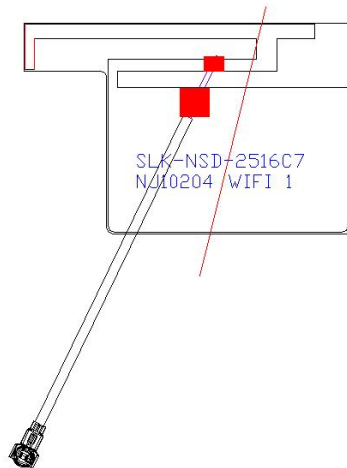
供应商地址: 深圳市宝安区西乡街道南昌社区前湾硬科技产业园 C 栋 101

电 话: 18666299104

传 真: 0769-82553116

WIFI 1

1. Explanation of Product number :



Product Code:

- (1) Customer: 纳斯达
- (2) Antenna Name: WIFI 天线 (WIFI Antenna)
- (3) Connector: 1.13 黑色线, 总长280mm, 4代端子

2. Features

- *Stable and reliable in performances
- *Compact size
- *RoHS compliance

3. Applications

- * IEEE802.11 (b/g/n/a)
- * Hand-held devices when WIFI (802.11b/g/n/a) functions are needed

4. Description

Holy bond's FPC antenna series are specially designed for WIFI (802.11b/g/n/a) applications. Based on Holy bond's proprietary design and processes, this FPC antenna has excellent stability and sensitivity to consistently provide high signal reception efficiency.

5. Electrical Specifications

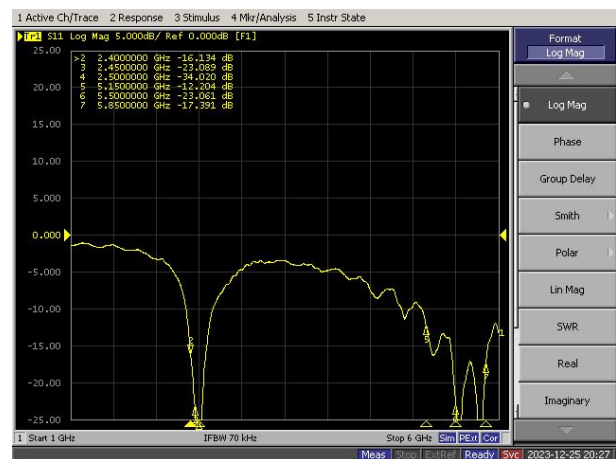
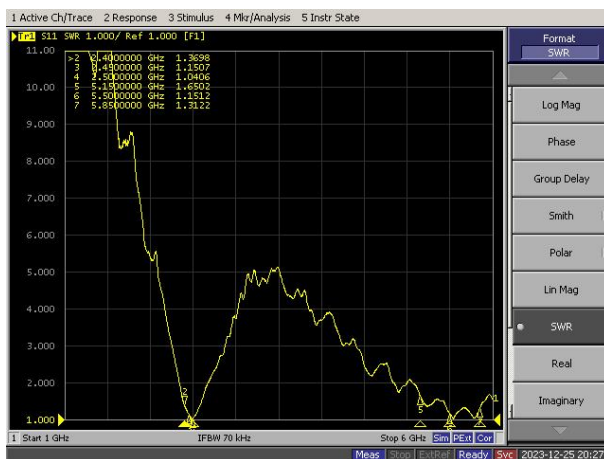
5-1

Characteristics	Specifications	Unit
Outline Dimensions	25.43x16.19x0.12	mm
Center Frequency	2.4-2.5+5.15-5.85	GHz
Bandwidth(under-10dB return loss)	130min	MHz
VSWR	3max	

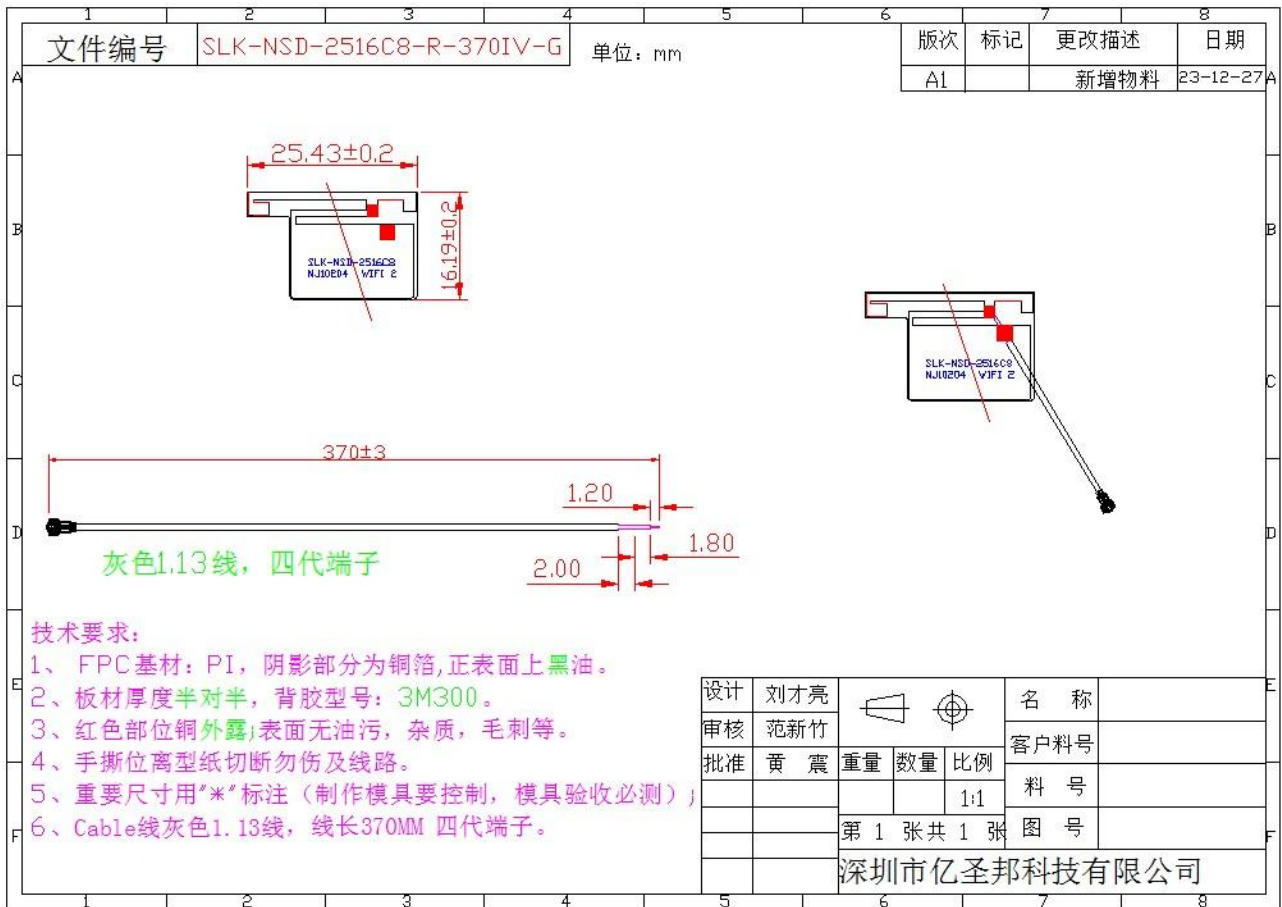
5-2.

VSWR

S11



6. Antenna Dimensions (unit: mm)



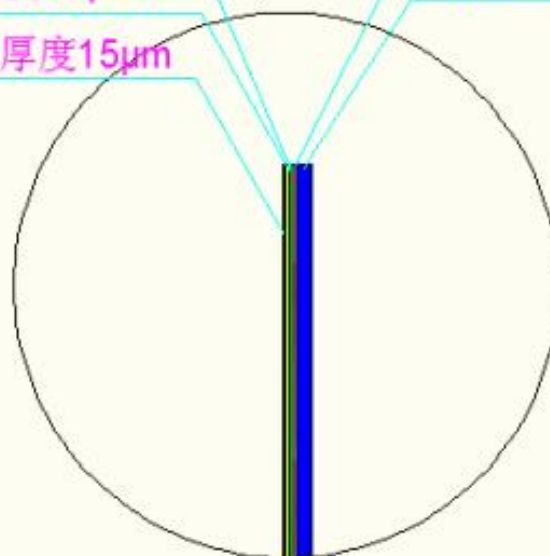
绿色: PI基材, 厚度25 μm

红色: 3M300胶, 厚度50 μm

黄色: 覆铜, 厚度35 μm

蓝色: 离型纸, 厚度100 μm

紫红色: 黑油, 厚度15 μm

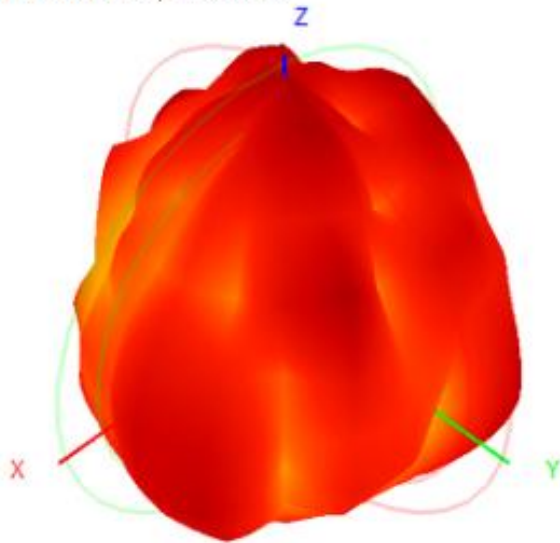


详细A 5/1

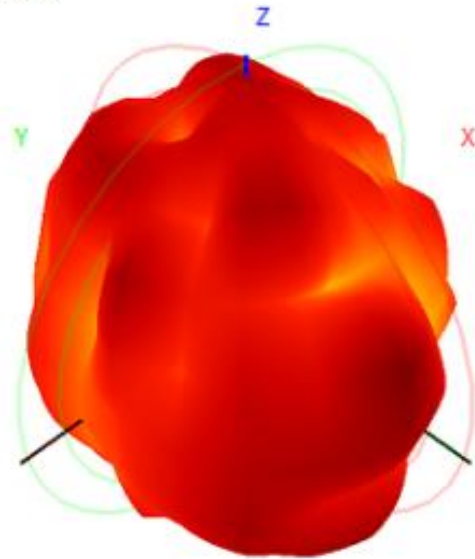
5-3.WIFI +BT Antenna Gain/Efficiency/Radiation Pattern of 3D

Frequency (MHz)	2400	2410	2420	2430	2440	2450	2460	2470	2480	2490	2500	5150	5350	5500	5650	5850
Efficiency (dBi)	-2.89	-2.70	-2.74	-2.51	-2.81	-2.86	-2.64	-2.98	-2.83	-2.92	-3.19	-3.34	-3.42	-3.26	-3.13	-2.80
Gain (dBi)	1.99	2.18	2.16	2.26	2.09	2.02	1.88	1.57	1.50	1.48	1.41	2.81	2.92	2.09	2.20	2.78
Efficiency (%)	51.33	53.61	53.16	56.04	52.28	51.71	54.36	50.32	52.09	50.97	47.97	46.37	45.52	47.16	48.69	52.54

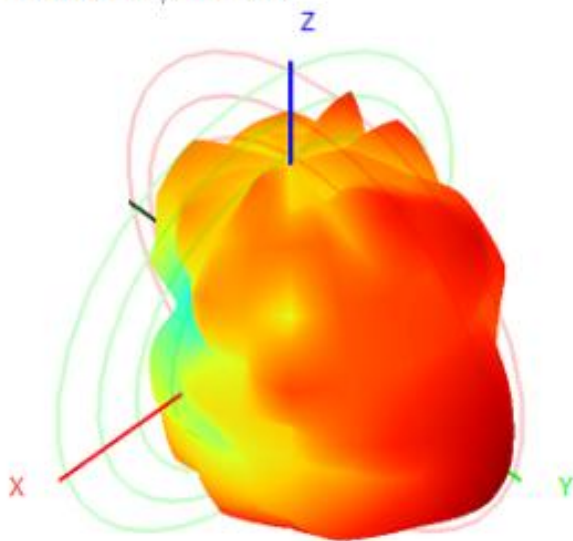
2450.0MHz H+V, Eff: 51.7%



Back View



5850.0MHz H+V, Eff: 52.5%



Back View

