

**PHOTOGRAPHS OF THE INTERIOR OF A
BRAND Tacx, MODEL T8000D.**

TÜV Rheinland Nederland B.V.
Eiberkamp 10
9351VT Leek
The Netherlands

Telephone: +31 888887888
Internet: www.tuv.com/nl
E-mail: products@nl.tuv.com

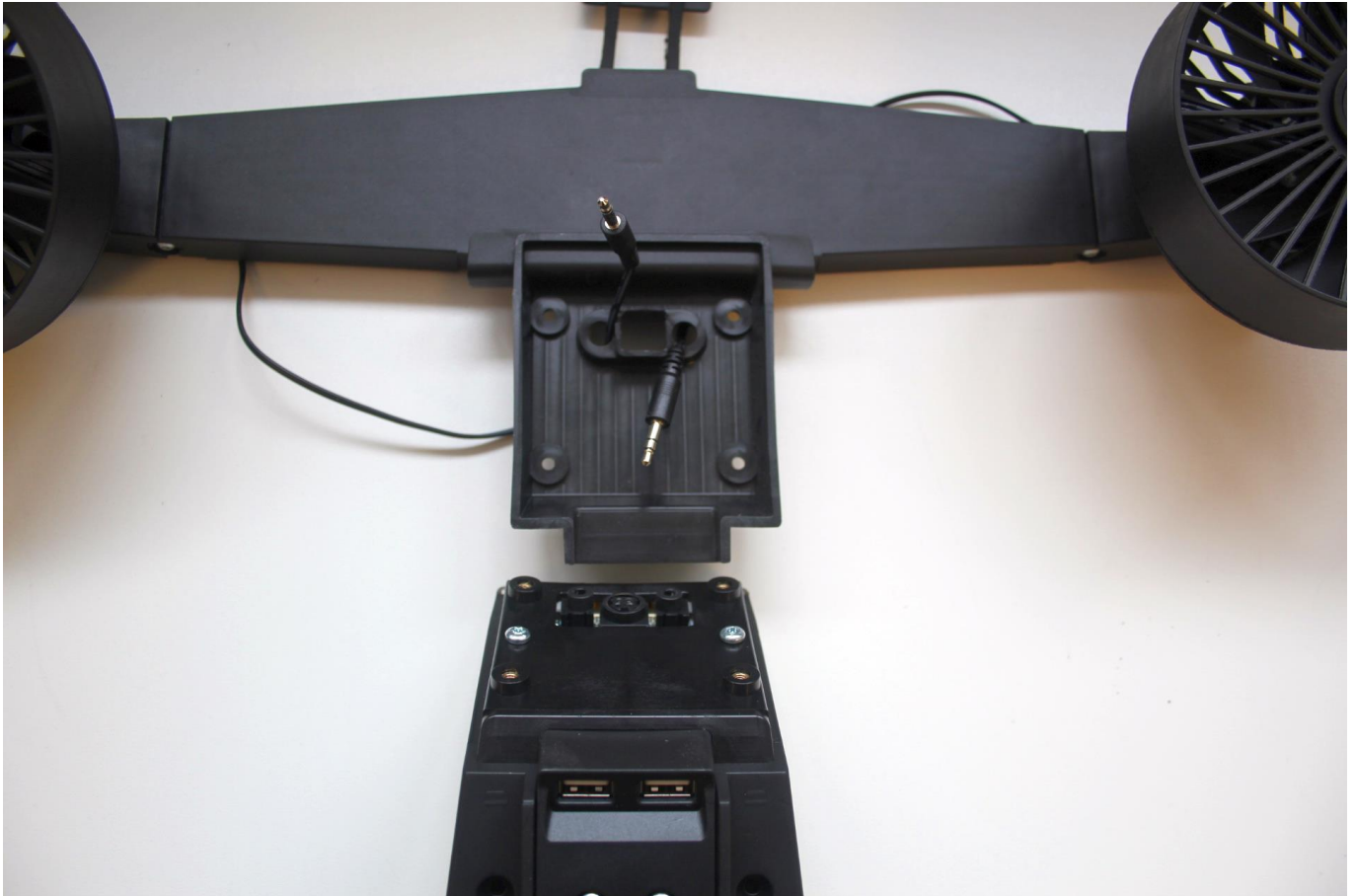


Table of contents

1.1	INTERNAL VIEW, DISPLAY UNIT REMOVED.	3
1.2	INTERNAL VIEW, PCB AS MOUNTED IN THE FRAME	4
1.3	INTERNAL VIEW, VIEW OF THE FRAME WITHOUT PCB	5
1.4	INTERNAL VIEW, PCB SEPARATED FROM DISPLAY PANEL	6
1.5	INNER ASSEMBLY, PCB VIEW.....	7
1.5.1	<i>PCB view, Front side</i>	7
1.5.2	<i>PCB view, Components side, zoom in to the transmitter part</i>	8
1.5.3	<i>PCB view - Back side</i>	9



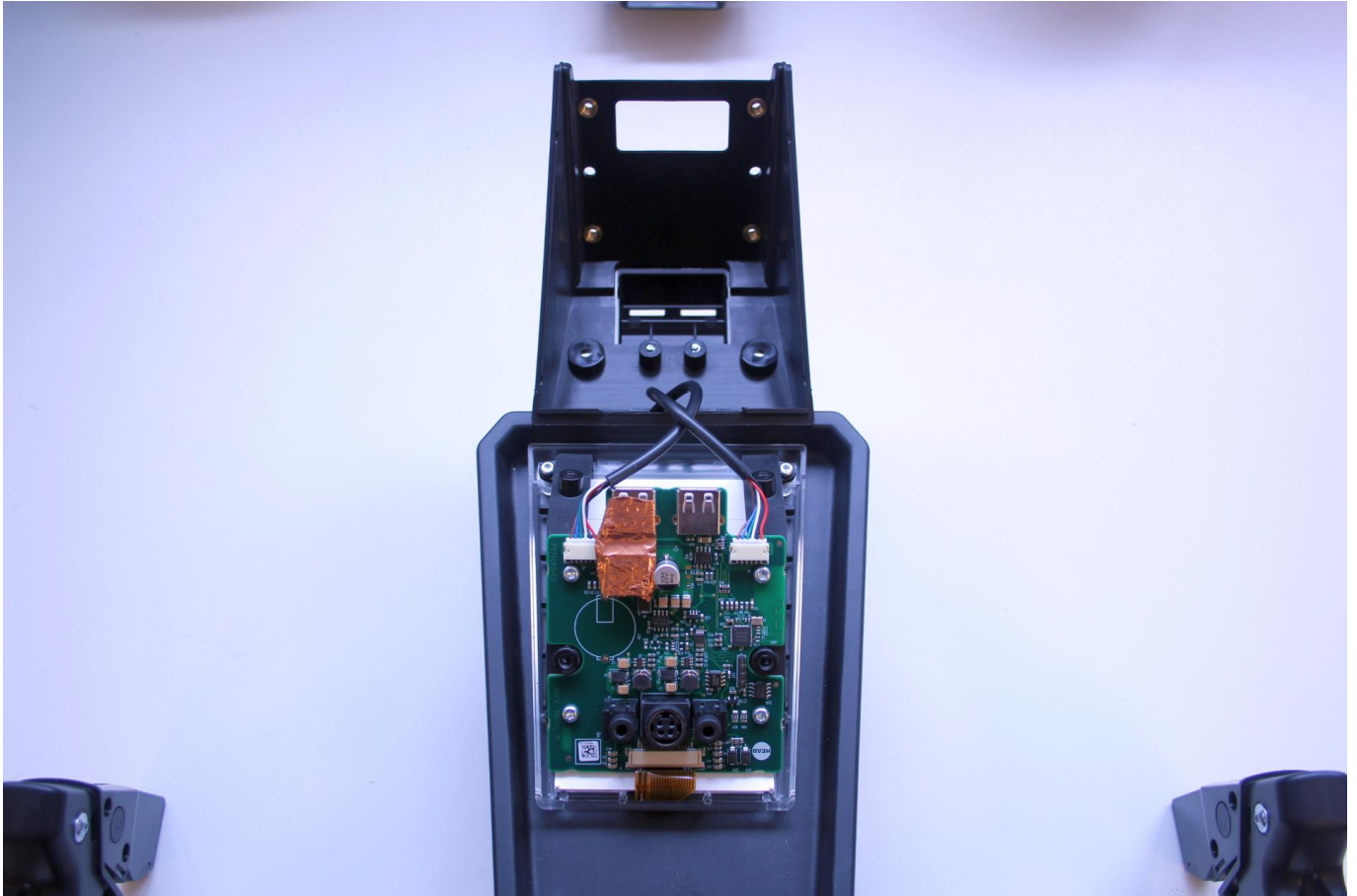
1.1 Internal view, display unit removed.



Display section (below) removed from handlebars (top)

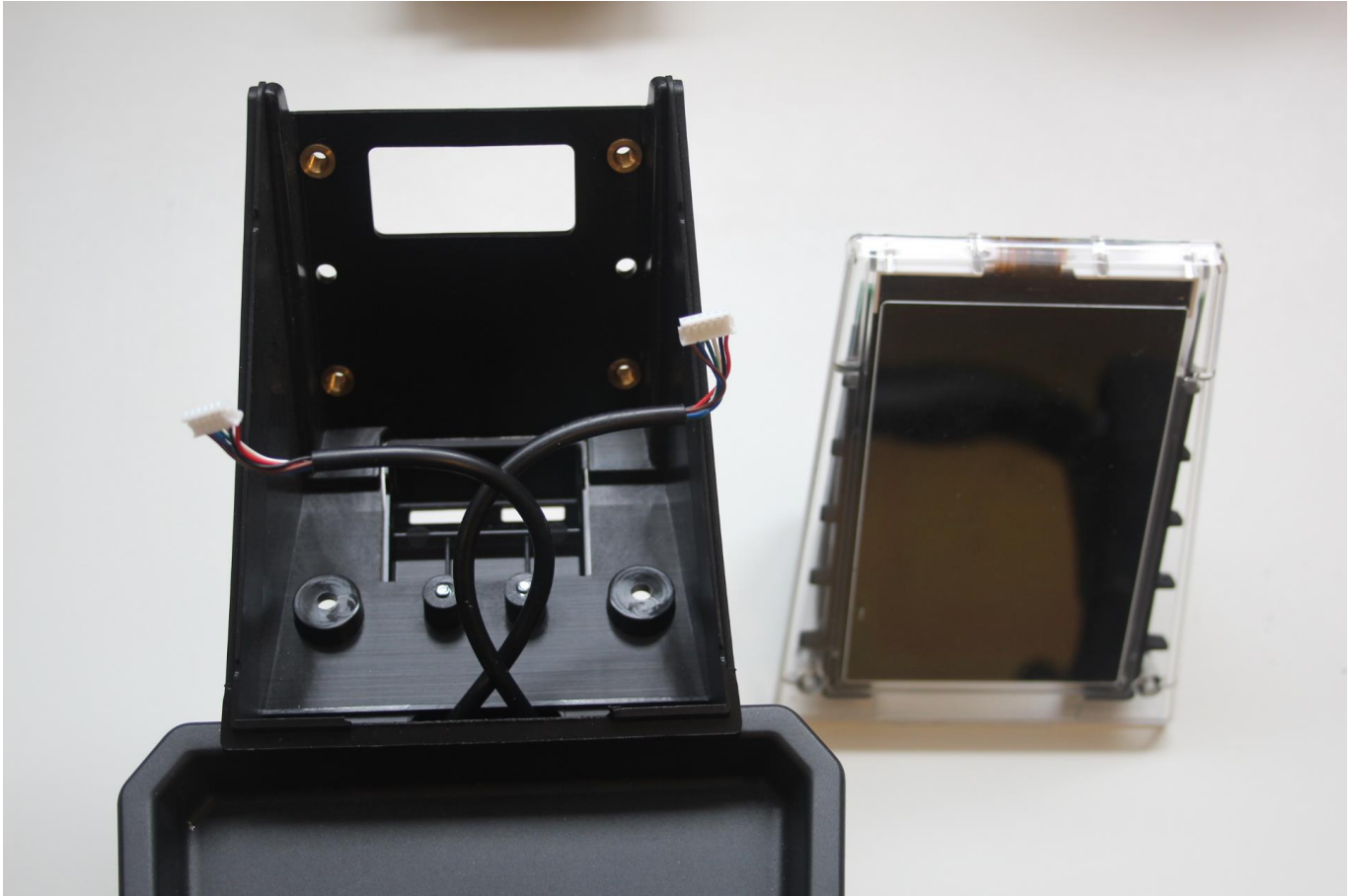


1.2 Internal view, PCB as mounted in the frame



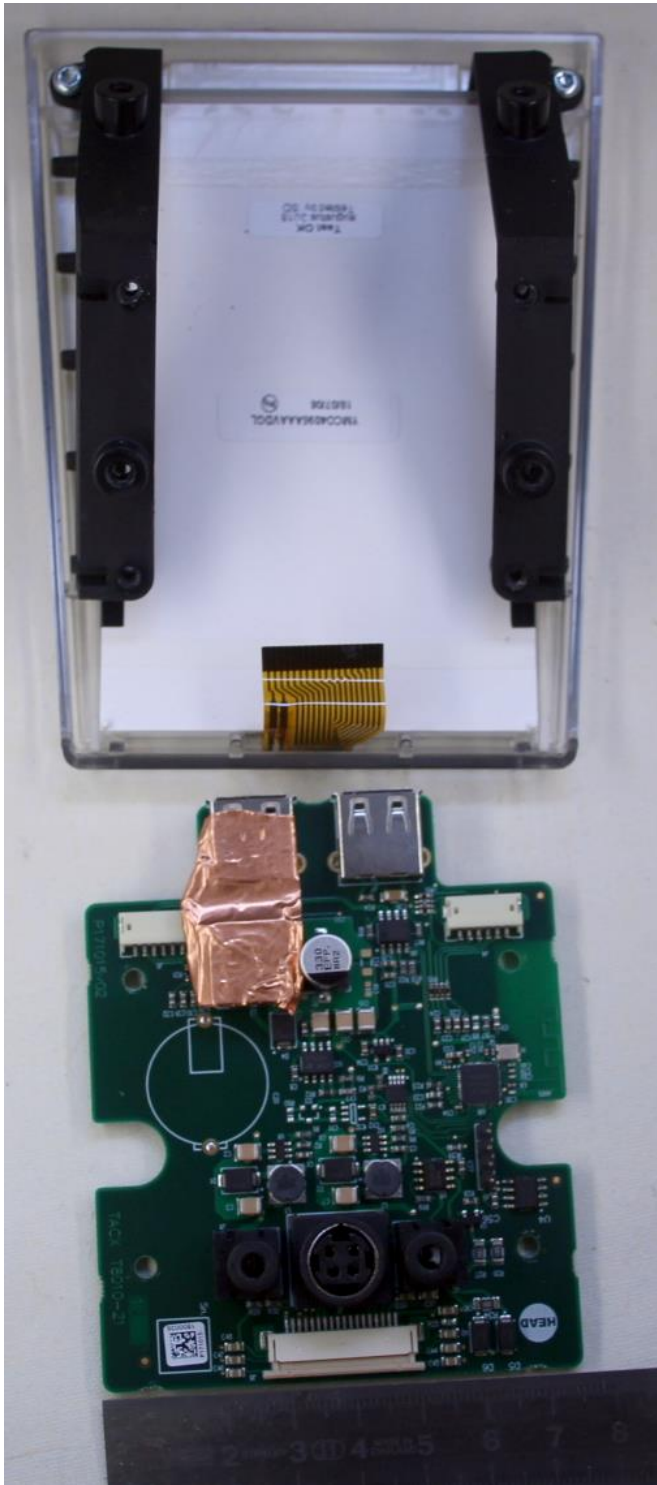


1.3 Internal view, view of the frame without pcb





1.4 Internal view, pcb separated from display panel





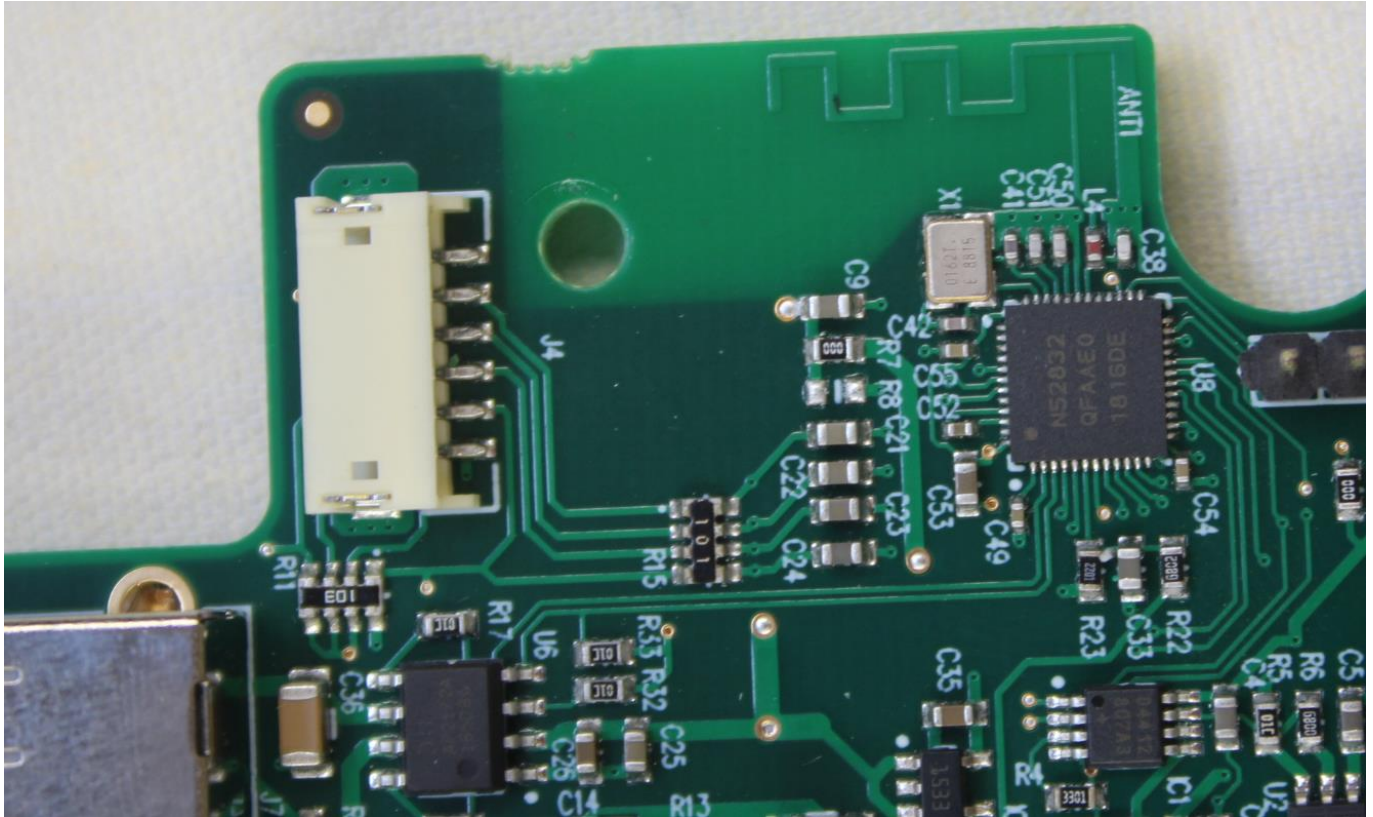
1.5 Inner assembly, PCB view

1.5.1 PCB view, Front side



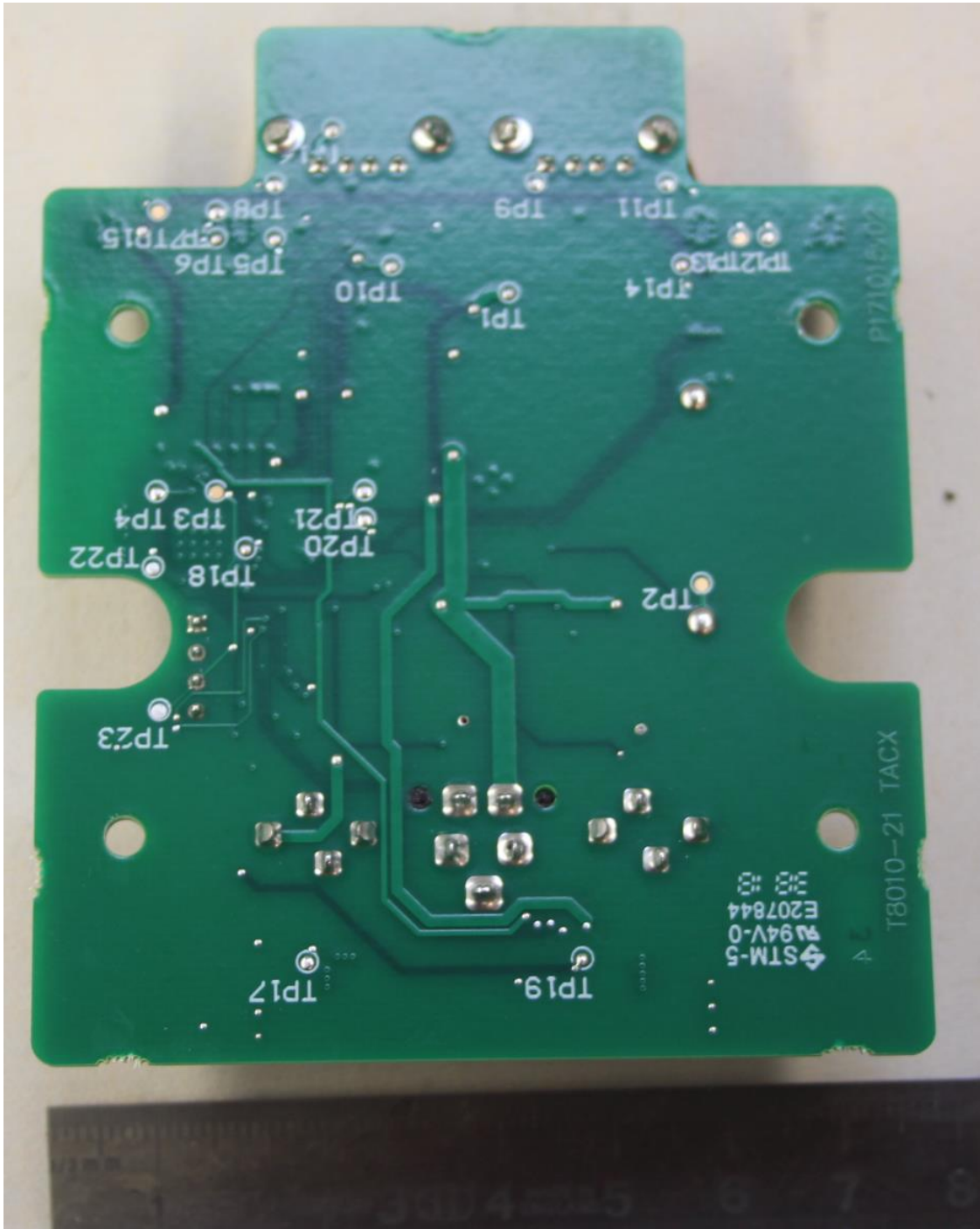


1.5.2 PCB view, Components side, zoom in to the transmitter part





1.5.3 PCB view - Back side



END OF DOCUMENT