

**PHOTOGRAPHS OF THE INTERIOR OF A
BRAND Tacx, MODEL T2980.**

TÜV Rheinland Nederland B.V.
Eiberkamp 10
9351VT Leek
The Netherlands

Telephone: +31 888887888
Internet: www.tuv.com/nl
E-mail: products@nl.tuv.com

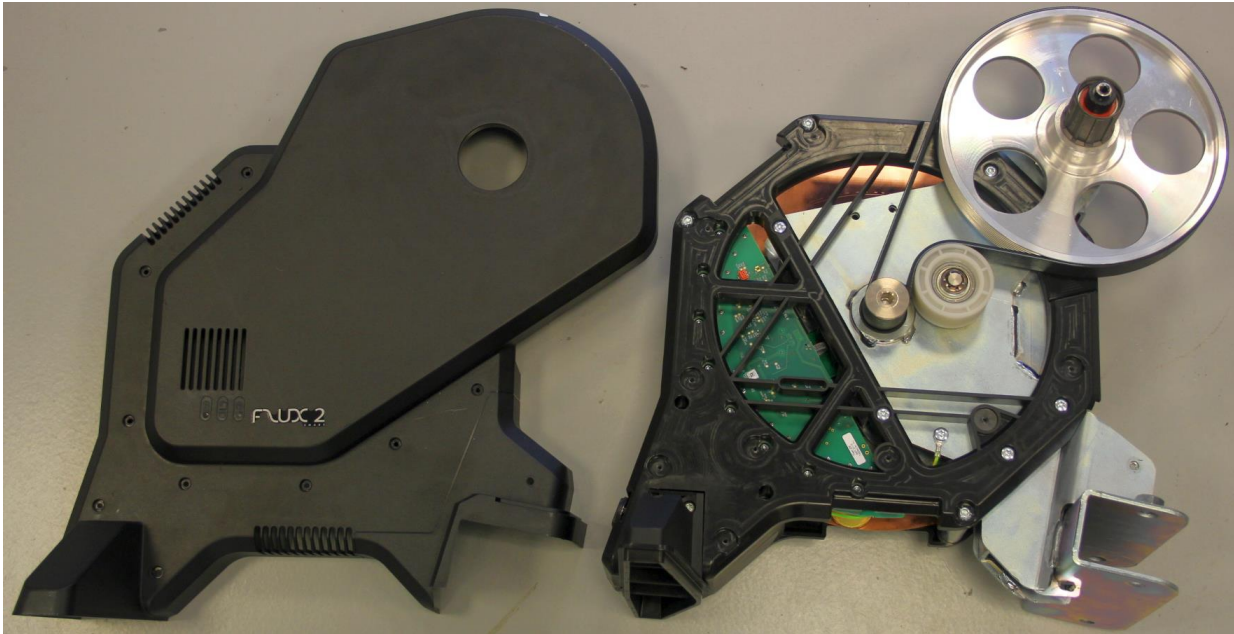


Table of contents

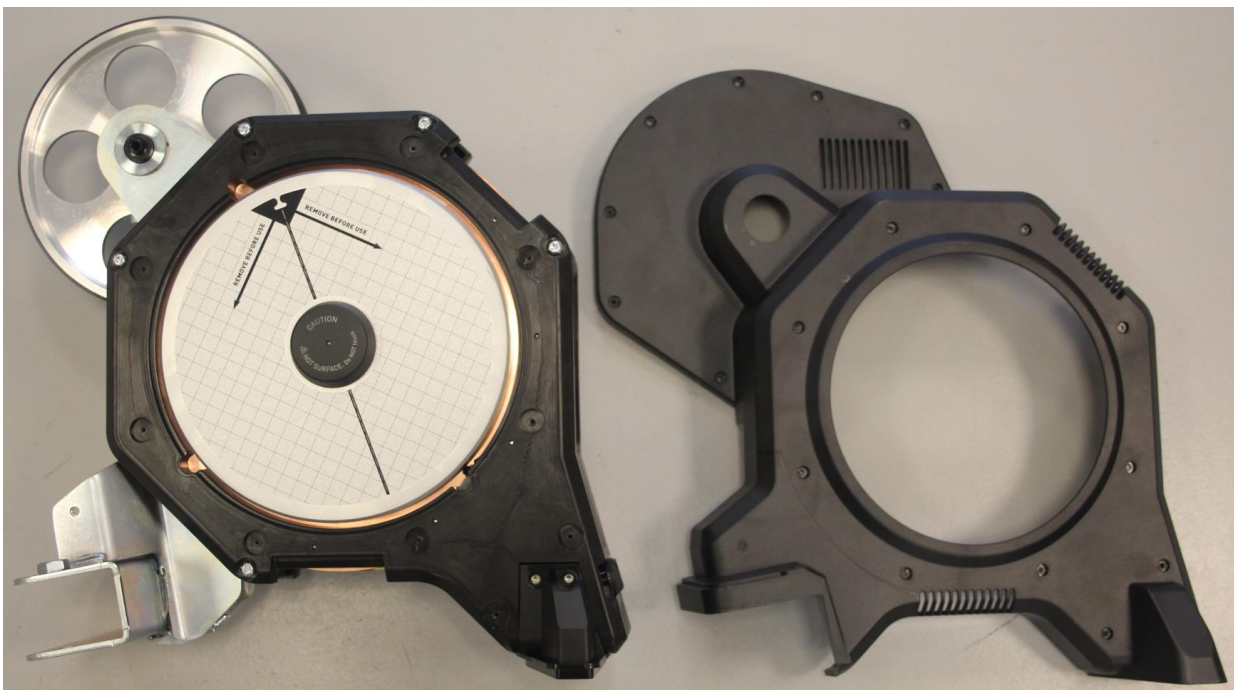
1.1	INTERNAL VIEW, COVER REMOVED- RIGHT SIDE.....	3
1.2	INTERNAL VIEW, COVER REMOVED- LEFT SIDE.....	3
	3
1.3	INTERNAL VIEW, PCB AS MOUNTED IN THE FRAME-RIGHT SIDE	4
1.4	INTERNAL VIEW, FRONT AND REAR VIEW.....	5
1.5	INNER ASSEMBLY, TOP AND BOTTOM VIEW,.....	6
1.6	INNER ASSEMBLY, PCB VIEW.....	7
1.6.1	<i>PCB view, Front side.....</i>	7
1.6.2	<i>PCB view, Components side, zoom in to the transmitter part.....</i>	8
1.6.3	<i>PCB view - Back side.....</i>	9



1.1 Internal view, cover removed- Right side

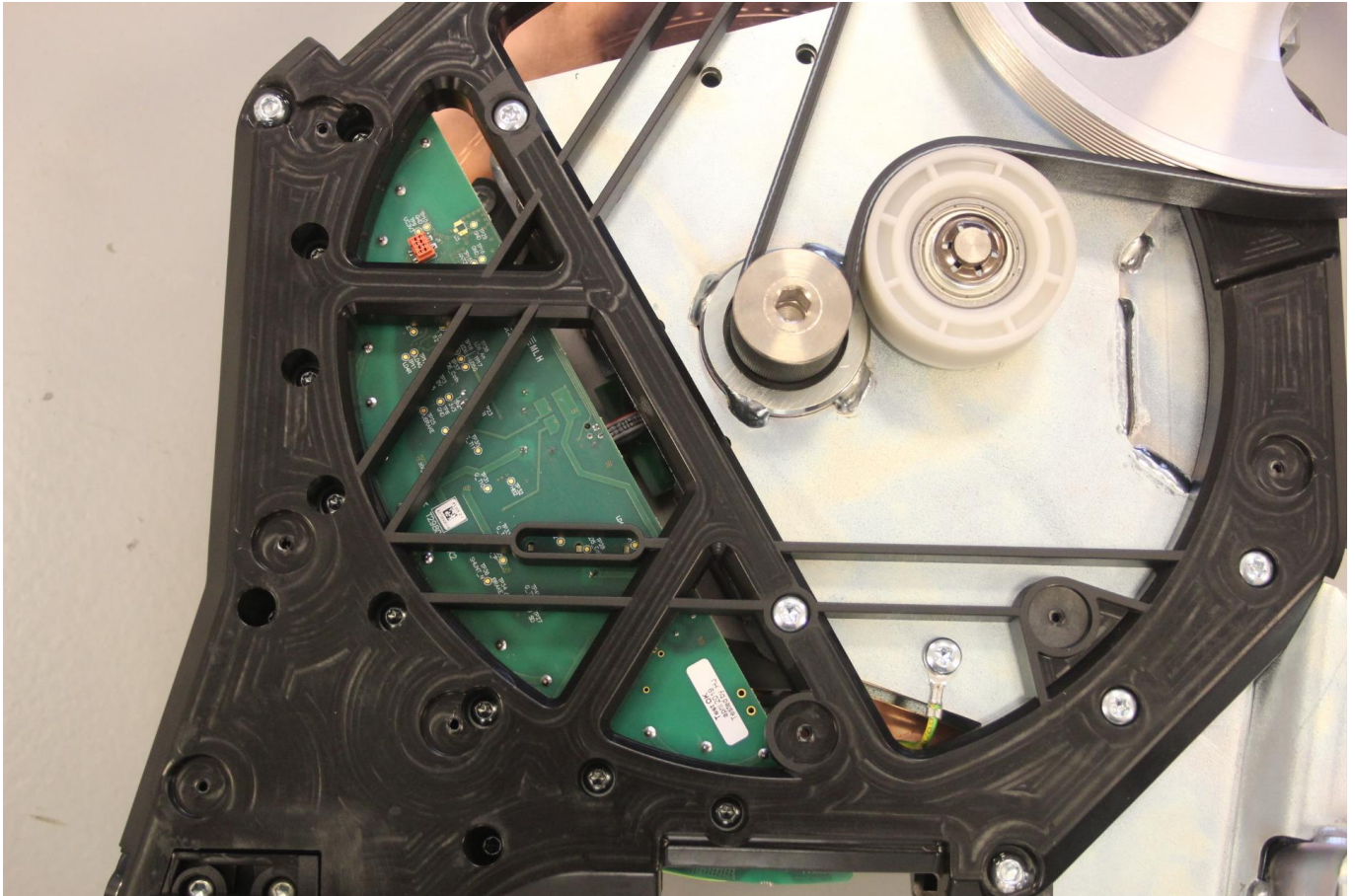


1.2 Internal view, cover removed- Left side



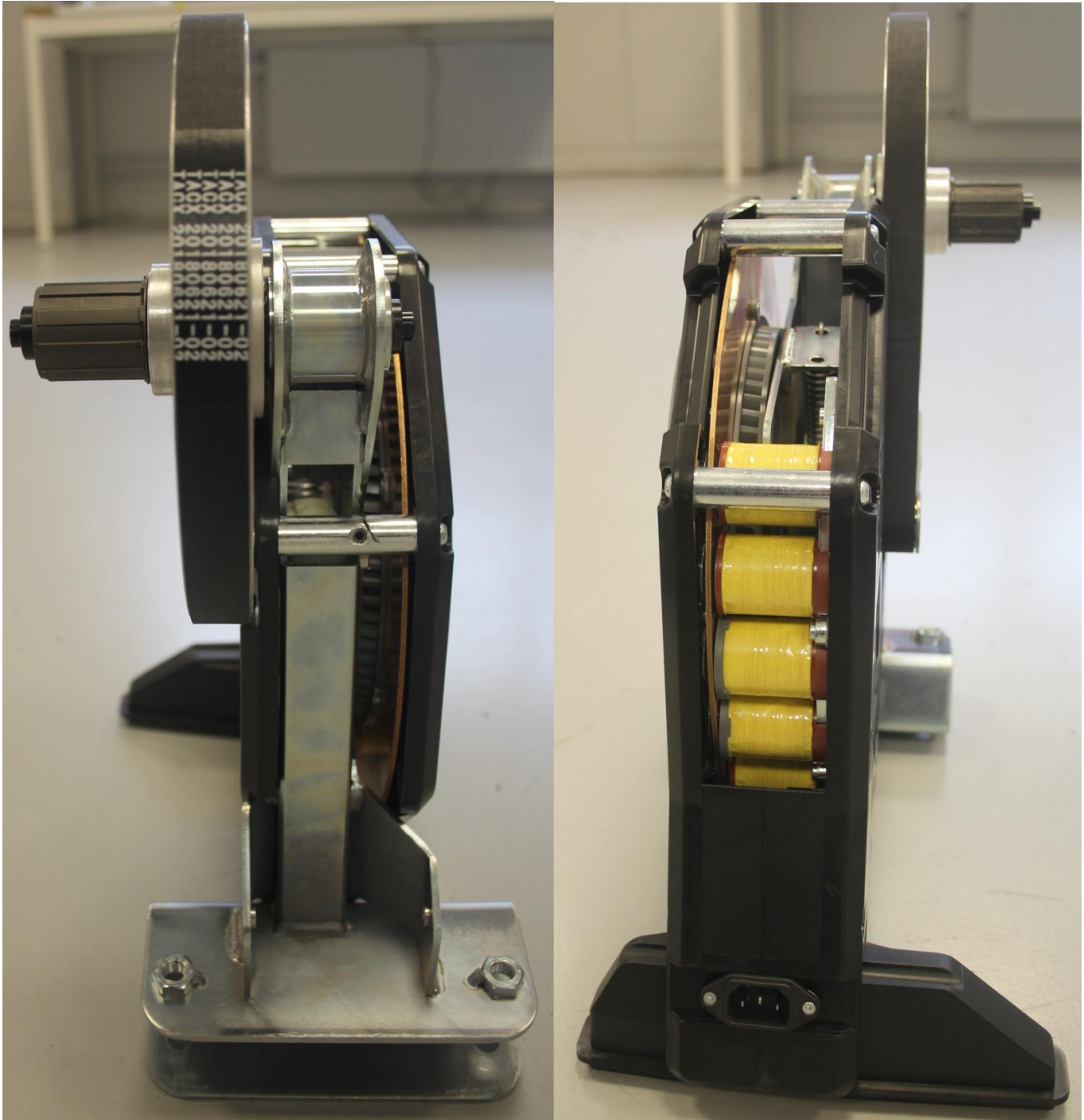


1.3 Internal view, PCB as mounted in the frame-right side



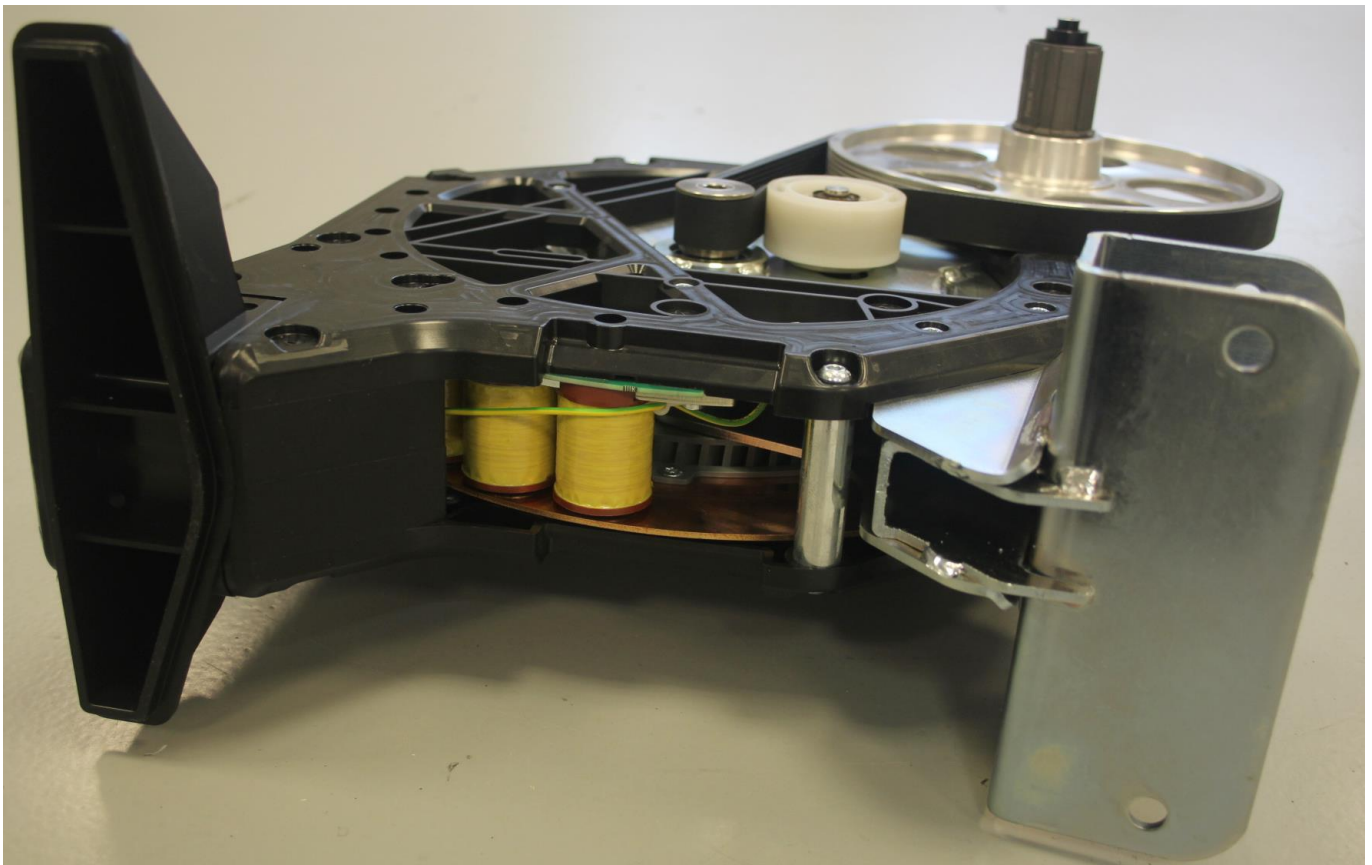
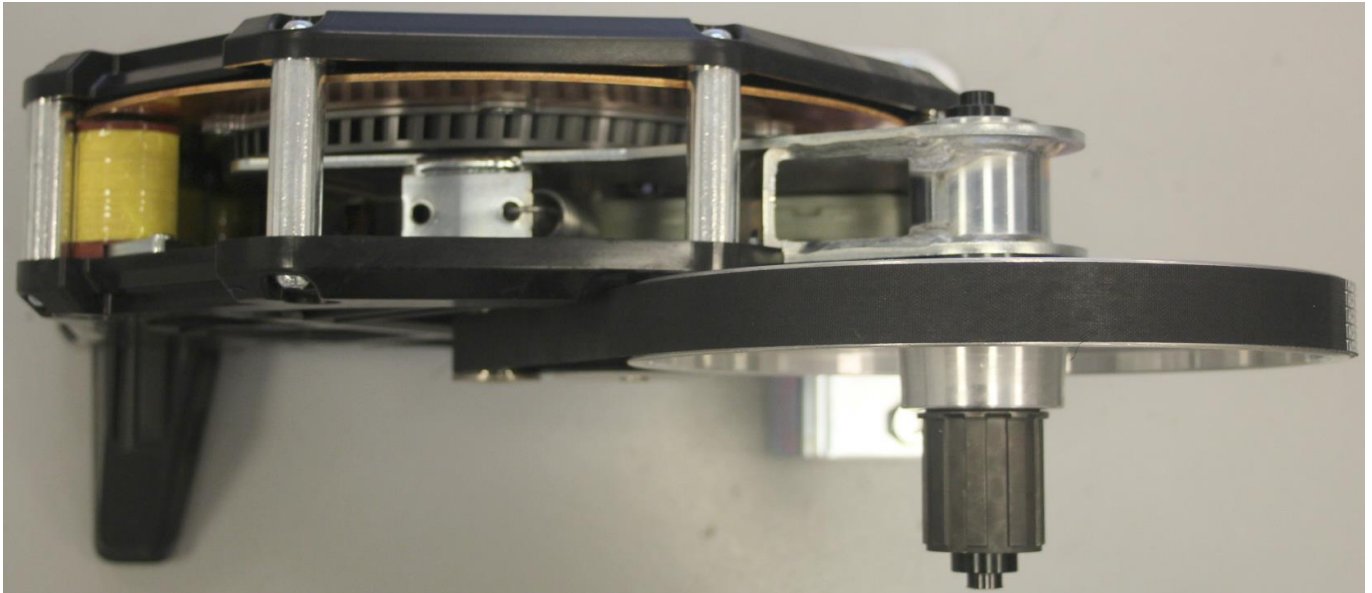


1.4 Internal view, front and rear view





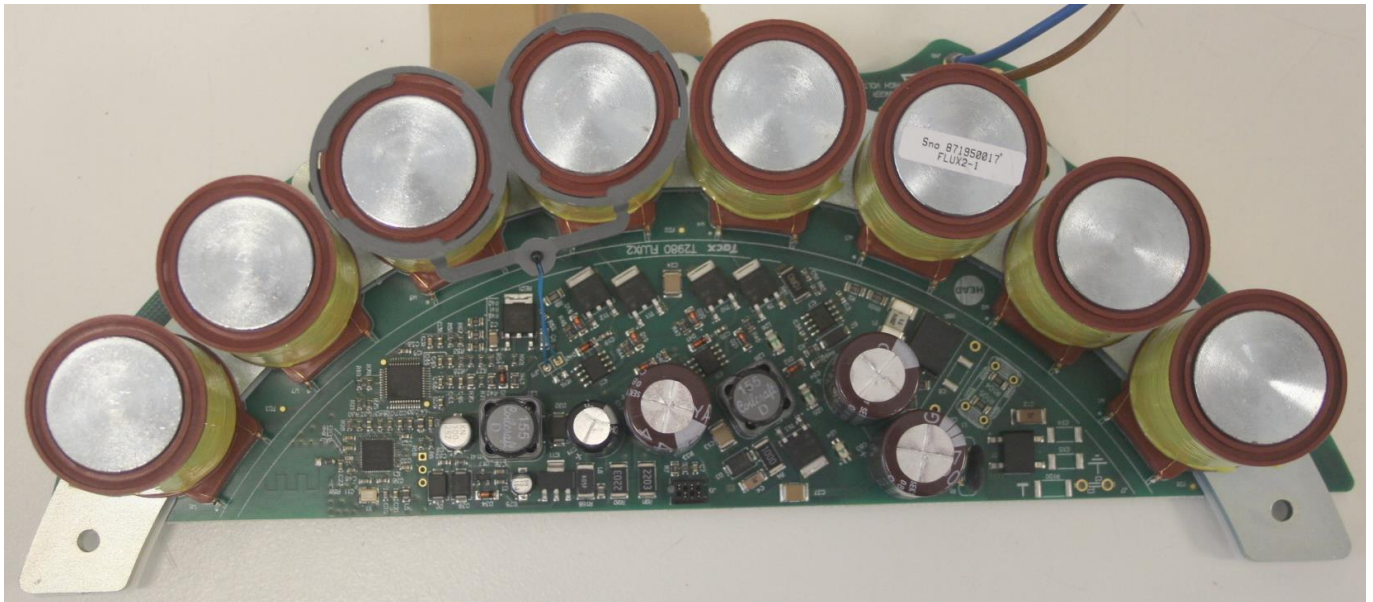
1.5 Inner assembly, Top and bottom view,





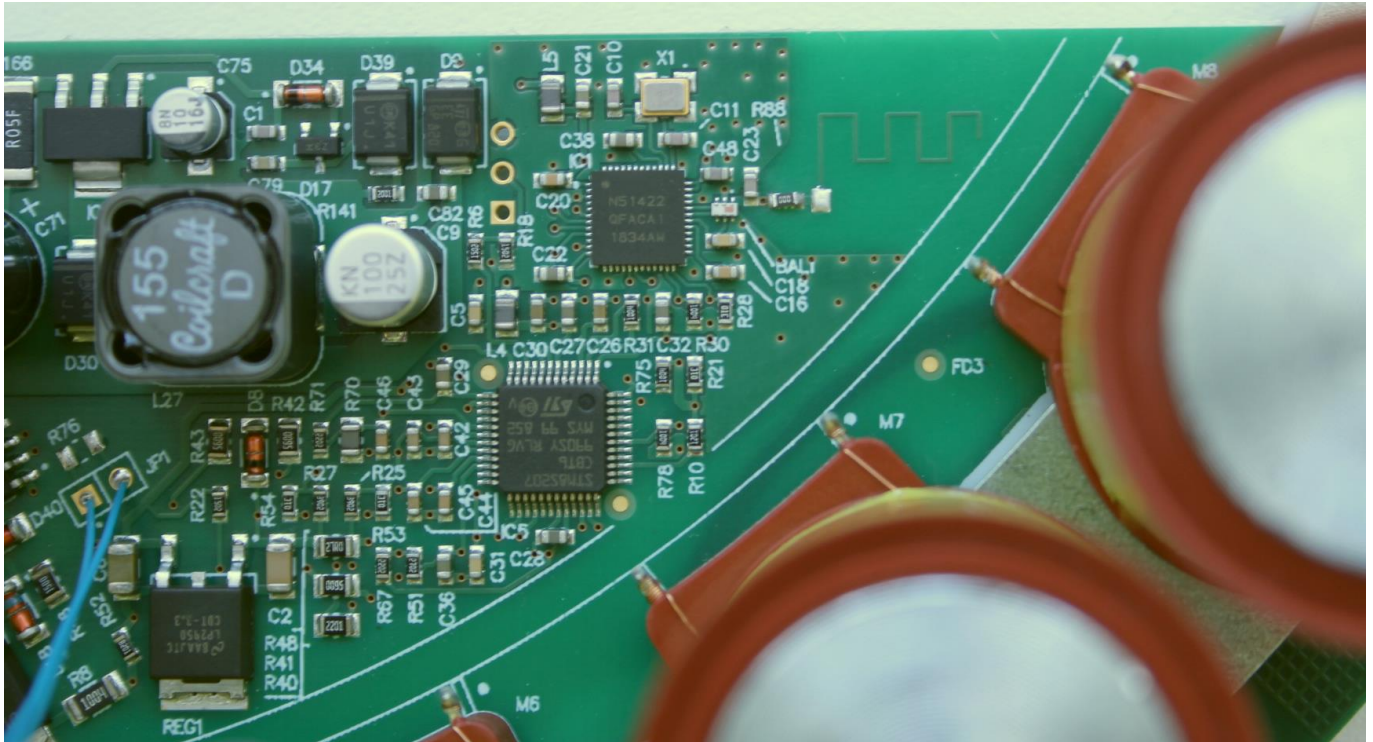
1.6 Inner assembly, PCB view

1.6.1 PCB view, Front side



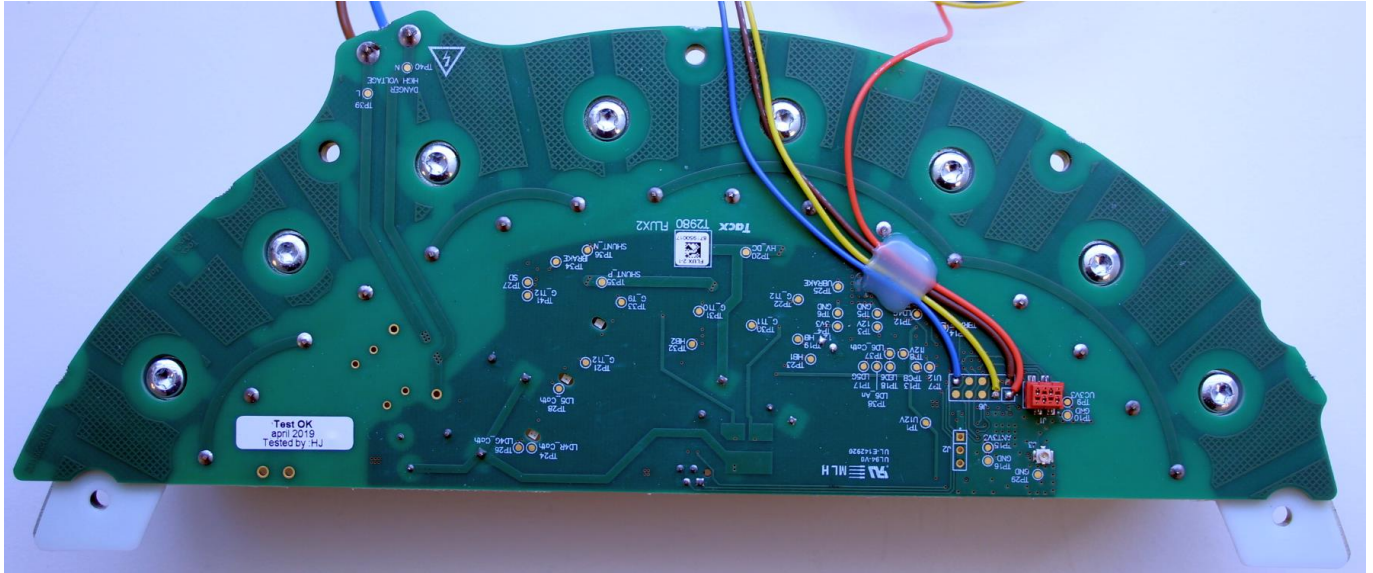


1.6.2 PCB view, Components side, zoom in to the transmitter part





1.6.3 PCB view - Back side



Note: red,blue,yellow and brown wire normally not fitted (fitted in this case for compliance testing purposes)

END OF DOCUMENT