

**PHOTOGRAPHS OF THE INTERIOR OF AN
WIRELESS COMMUNICATION SYSTEM,
OPERATING IN THE RANGE 2400-2483.5 MHz,
BRAND Tacx, MODEL T2800 Neo.**

15050601.p01
July 27, 2015

FCC listed : 90828
Industry Canada : 2932G-2
R&TTE, LVD, EMC Notified Body : 1856

TÜV Rheinland Nederland B.V.
Eiberkamp 10
9351VT Leek
The Netherlands

Telephone: +31 594 505005
Telefax: +31 594 504804
Internet: www.tuv.com/nl
E-mail: info@nl.tuv.com



Description of test item

Test item : Wireless Communication System
Manufacturer : Tacx b.v.
Brand : Tacx
Model(s) : T2800 Neo
Serial number(s) : P140103-1500019 (serial PCB),
The device is an unlabeled engineering sample
Revision : --
FCC ID : 2AAMI-T2800
IC : 11353A-T2800
Receipt date : July 07, 2015

Applicant information

Applicant's representative : Martin Smits
Company : Tacx b.v.
Address : Rijksstraatweg 52
Postal code : 2241BW,
City : Wassenaar
Country : Netherlands
Telephone number : +31705119259
Telefax number : +31705116411
e-mail address : martin@Tacx.nl

Report written by : R. van der Meer

Report date : July 27, 2015

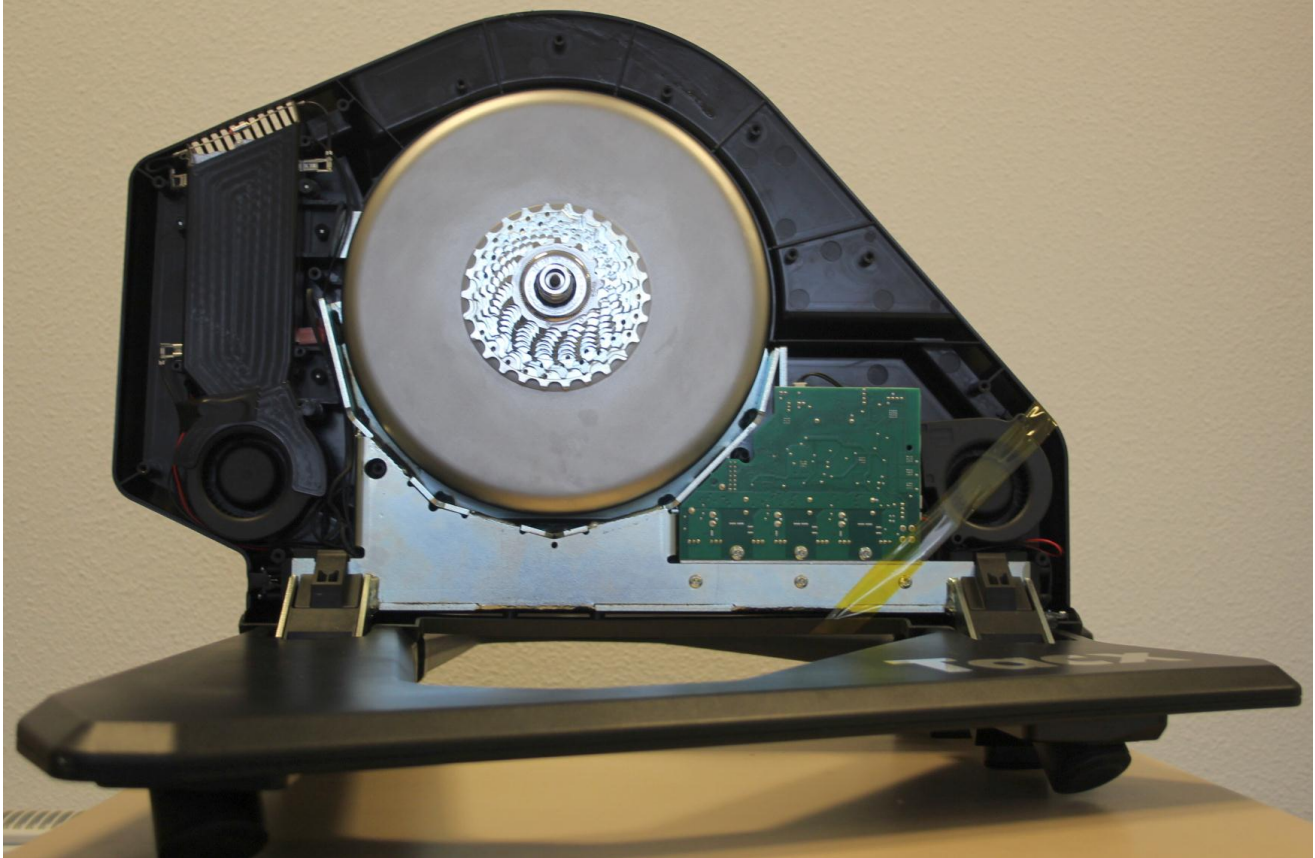


Table of contents

1.1	INTERNAL VIEW 1, LEFT COVER REMOVED.....	4
1.2	INTERNAL VIEW 2, PCB AS MOUNTED IN THE LEFT SIDE	5
1.3	INTERNAL VIEW 2, PCB REMOVED	6
1.4	INNER ASSEMBLY, PCB VIEW	7
1.4.1	<i>PCB view, Components side</i>	7
1.4.2	<i>PCB view, Components side, zoom in to the transmitter part</i>	8
1.4.3	<i>PCB view - Solder side</i>	9



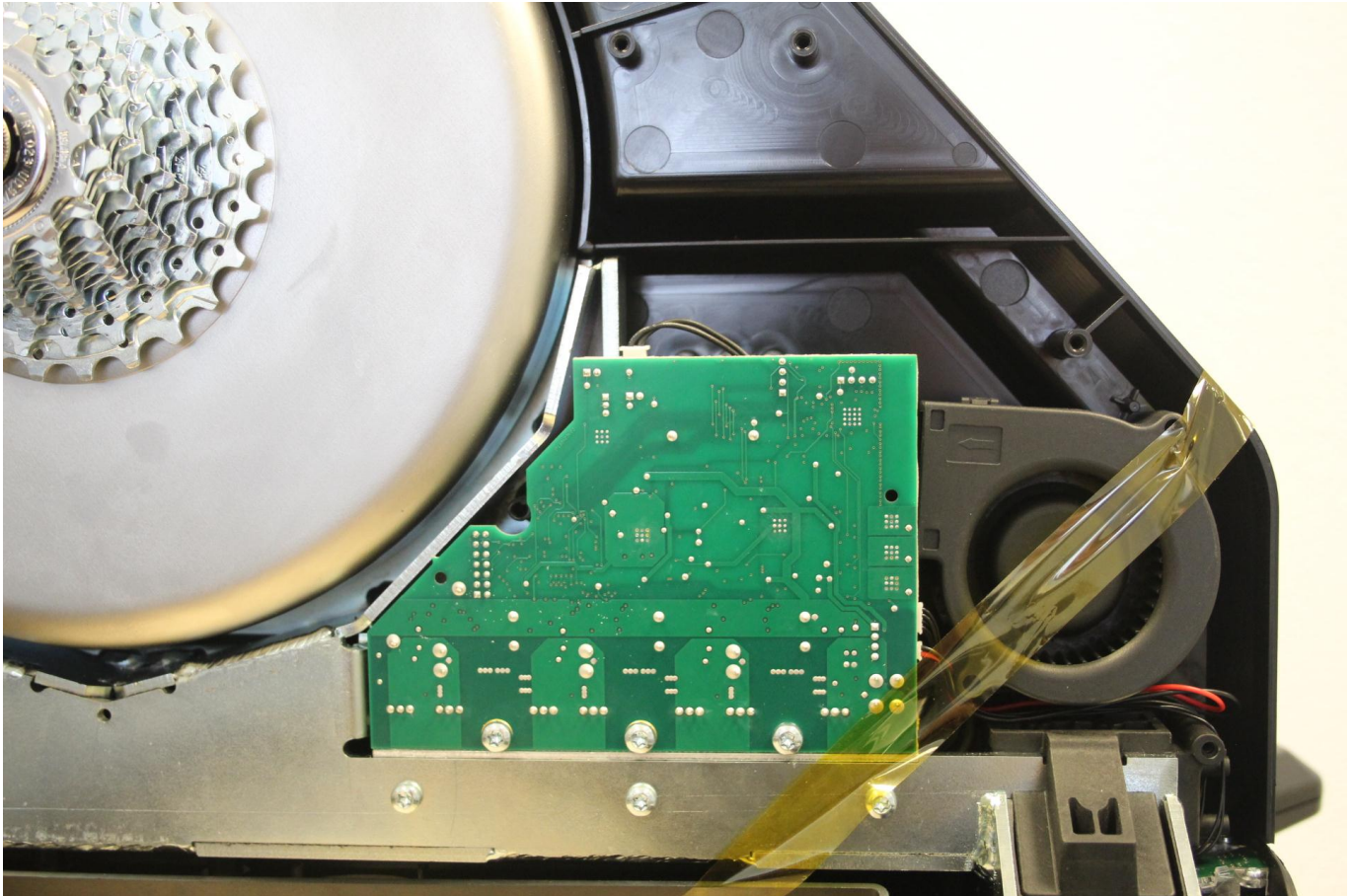
1.1 Internal view 1, left cover removed.



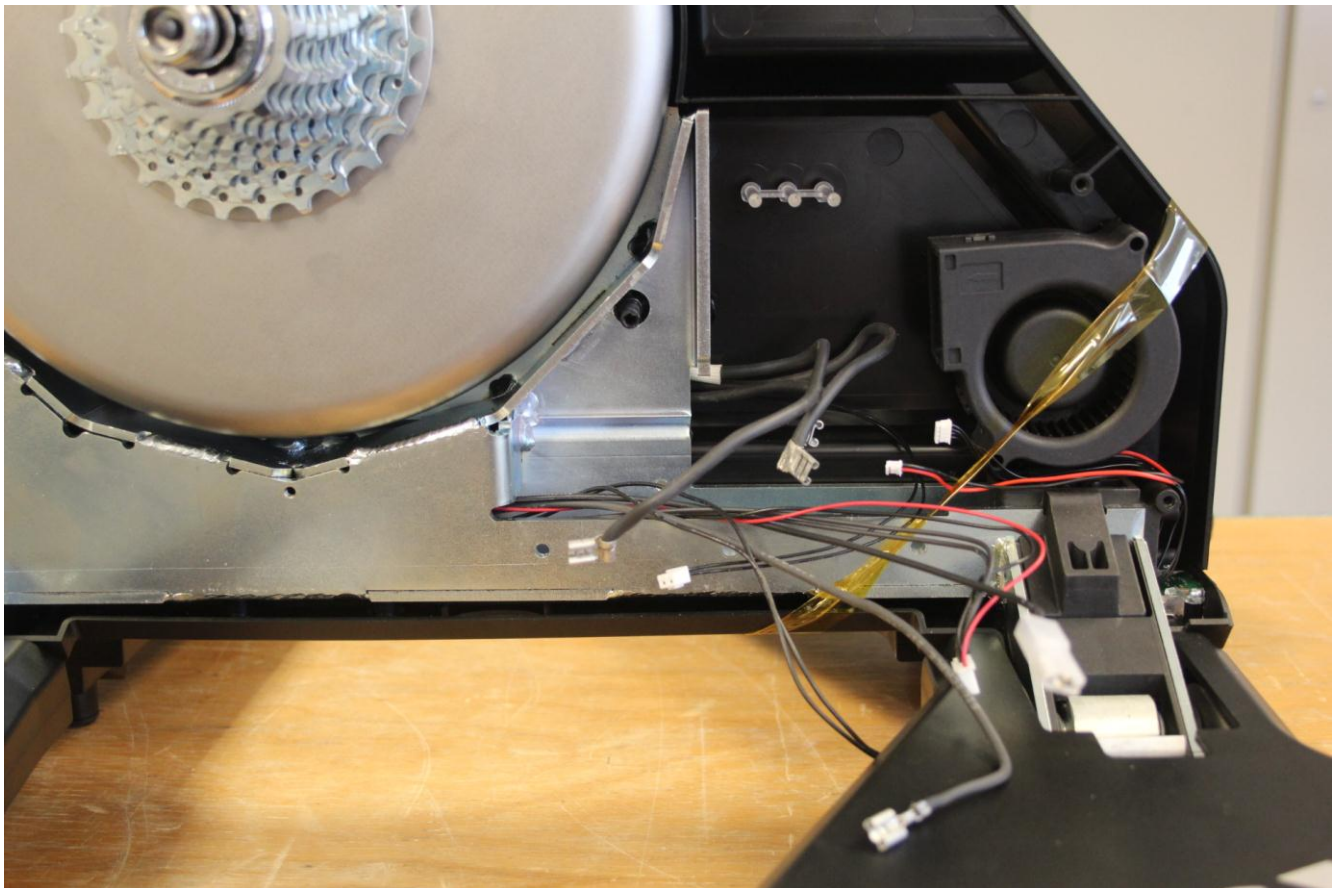
Left side, holding the transmitters (cover removed)



1.2 Internal view 2, PCB as mounted in the left side



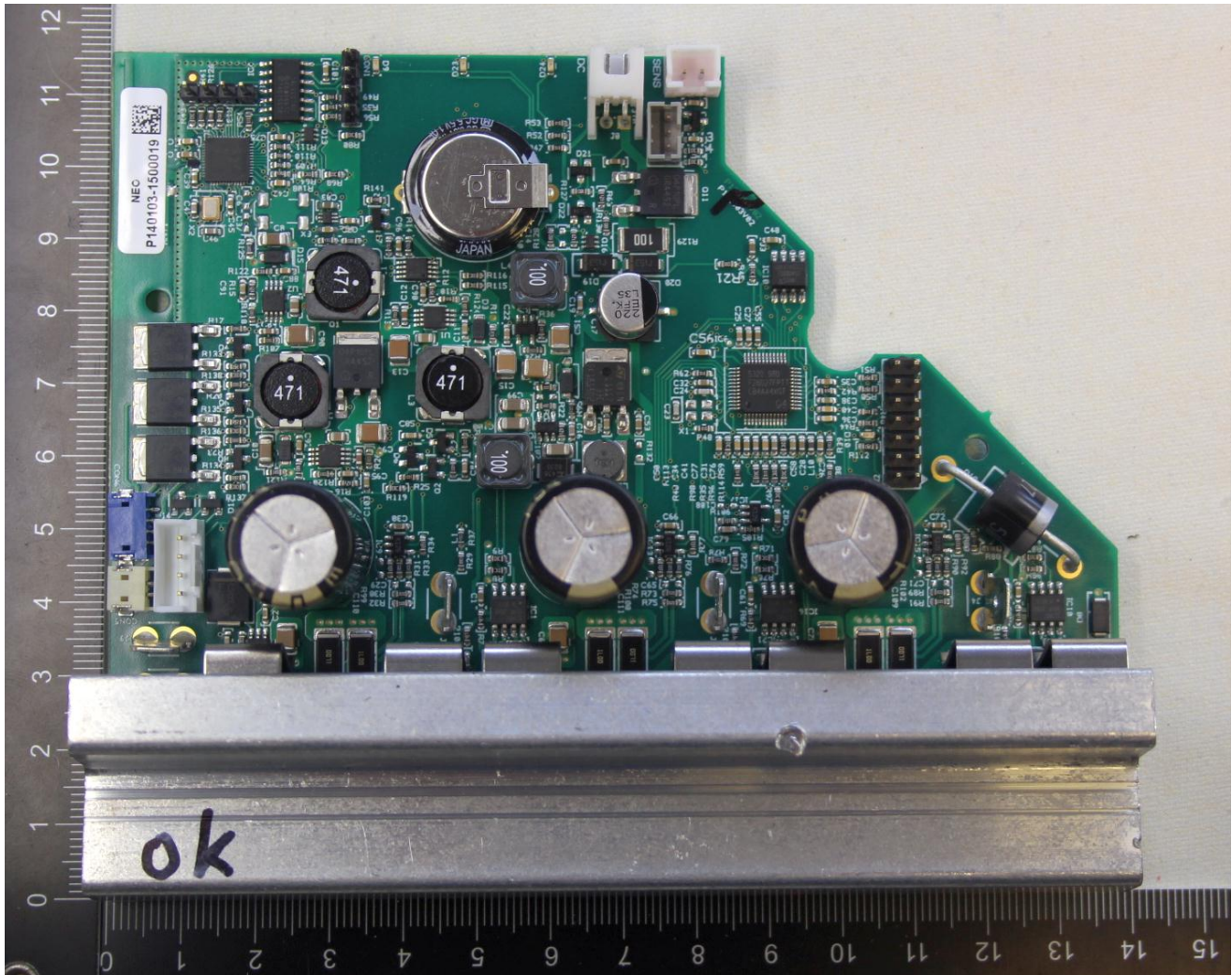
1.3 Internal view 2, PCB removed





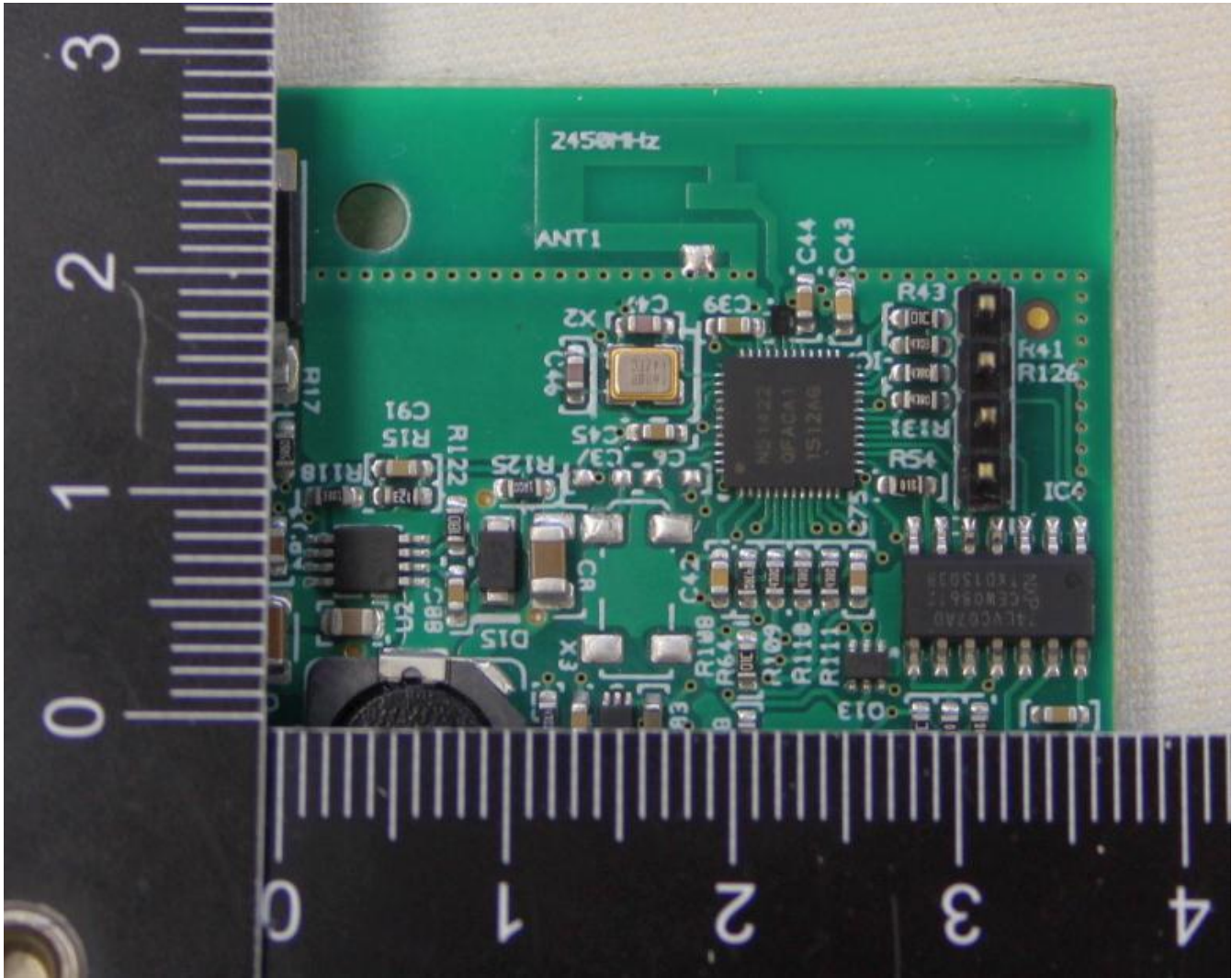
1.4 Inner assembly, PCB view

1.4.1 PCB view, Components side





1.4.2 PCB view, Components side, zoom in to the transmitter part





1.4.3 PCB view - Solder side

