

**PHOTOGRAPHS OF THE EXTERIOR OF A  
WIRELESS COMMUNICATION SYSTEM,  
OPERATING IN THE RANGE 2400-2483.5 MHz,  
BRAND Tacx, MODEL T2800 Neo**

15050601.p02  
July 27, 2015

FCC listed : 90828  
Industry Canada : 2932G-2  
R&TTE, LVD, EMC Notified Body : 1856

**TÜV Rheinland Nederland B.V.**  
Eiberkamp 10  
9351VT Leek  
The Netherlands

Telephone: +31 594 505005  
Telefax: +31 594 504804  
Internet: [www.tuv.com/nl](http://www.tuv.com/nl)  
E-mail: [info@nl.tuv.com](mailto:info@nl.tuv.com)



**Description of test item**

Test item : Wireless Communication System  
Manufacturer : Tacx b.v.  
Brand : Tacx  
Model(s) : T2800 Neo  
Serial number(s) : Unlabeled engineering sample  
Revision : --  
FCC ID : 2AAMI-T2800  
IC : 11353A-T2800  
Receipt date : July 27, 2015

**Applicant information**

Applicant's representative : Martin Smits  
Company : Tacx b.v.  
Address : Rijksstraatweg 52  
Postal code : 2241BW,  
City : Wassenaar  
Country : Netherlands  
Telephone number : +31705119259  
Telefax number : +31705116411  
e-mail address : martin@Tacx.nl

Report written by : R. van der Meer

Report date : July 27, 2015



## Table of contents

<b>1</b>	<b>PHOTOGRAPHS OF THE EQUIPMENT .....</b>	<b>4</b>
1.1	EXTERNAL VIEW .....	4
1.1.1	Front view .....	4
1.1.2	Rear view .....	5
1.2	SIDE VIEWS .....	6
1.3	BREAK UNIT WITHOUT FRAME, TOP AND BOTTOM VIEWS.....	8
<b>2</b>	<b>TOPVIEW WITH BRAND MARKING .....</b>	<b>9</b>

## 1 Photographs of the equipment.

### 1.1 External view.

Photos are of a testsample without brand marking. See section 2 for a view with brand marking as will be marketed.

#### 1.1.1 Front view.



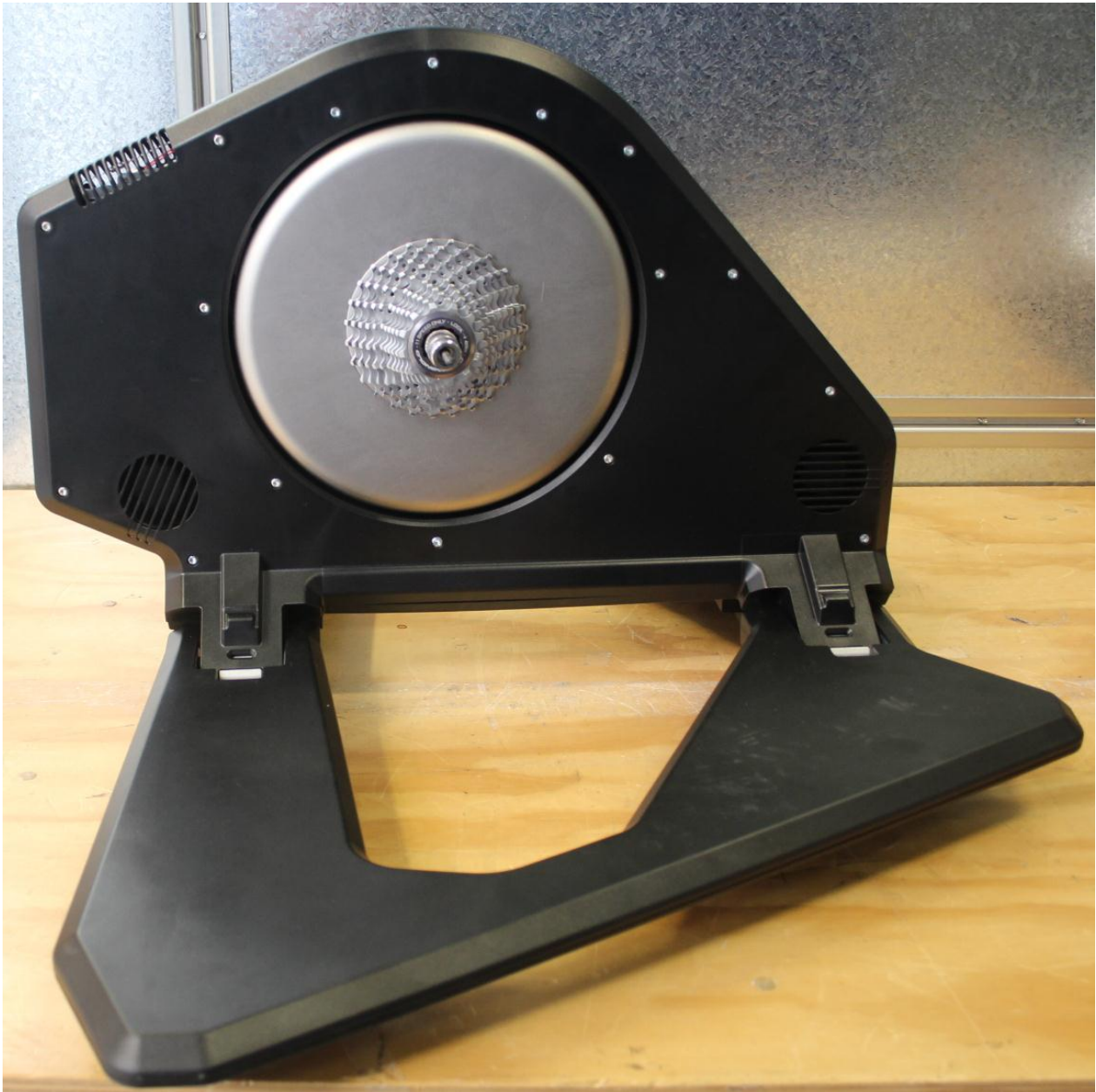


### 1.1.2 Rear view





## 1.2 Side views



Left side view



**TÜVRheinland**®

Precisely Right.

Description of EUT: Wireless Communication System  
Manufacturer: Tacx b.v.  
Brand mark: Tacx  
Model: T2800 Neo  
FCC ID: 2AAMI-T2800  
IC: 11353A-T2800

---



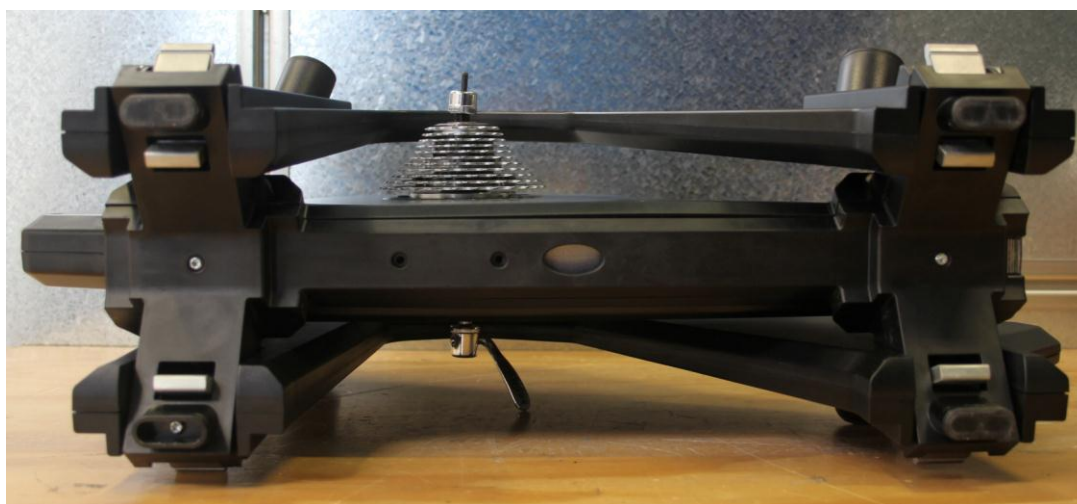
Right side view



### 1.3 Break unit without frame, top and bottom views



Top view



Bottom view



## 2 Topview with brand marking



Top view with brand marking (note: left cover is missing)