

# STAPLES®

Bluetooth dongle

51206

USER MANUAL

# 1 Specifications

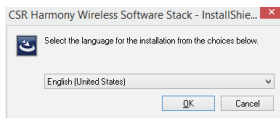
- ④ Bluetooth 4.0
- ④ Transmission range up to 50 m
- ④ Miniature dimensions
- ④ LED control lamp
- ④ Low energy consumption
- ④ Able to connect up to 7 devices at the same time
- ④ CSR harmony as a part of the package
- ④ Compatible with Windows 8/8.1

# 2 Installation

1. Insert bluetooth dongle to USB port of the computer.
2. Wait for installation of drivers.

For use of APTX function for pairing the bluetooth dongle with a headset or speaker you must install the utility from the attached CD. Installation needs the access to Internet. During the installation it may be displayed a warning about installation of non-signed drivers, which must be confirmed:

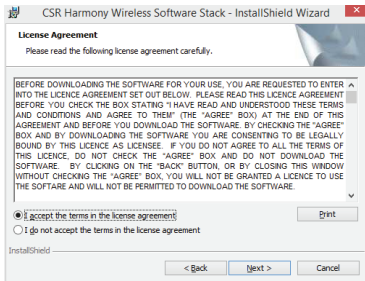
1. Start the installation by clicking the **setup.exe**.
2. Select the language and click **OK**.



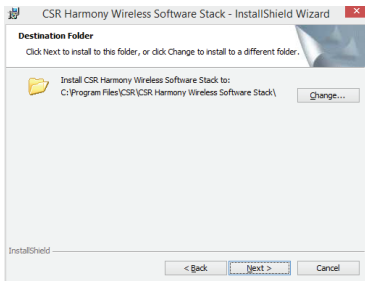
3. Click **Next**.



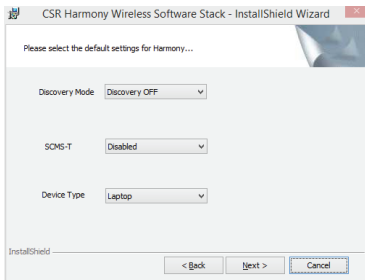
4. Confirm that you agree with the terms of the License Agreement and click **Next**.



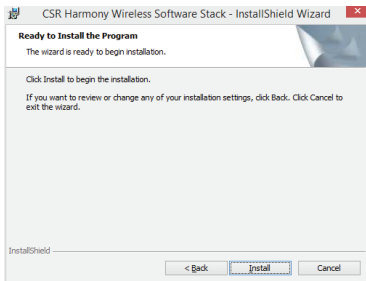
5. Select the installation directory (recommended to use the preset) and click **Next**.



6. Select the device type, **Laptop** or **PC/Desktop**. You may keep the original values of options of **Discovery Mode** and **SCMS-T**. Click **Next**.



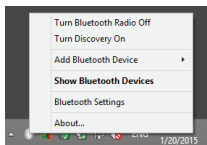
7. Click **Install**.



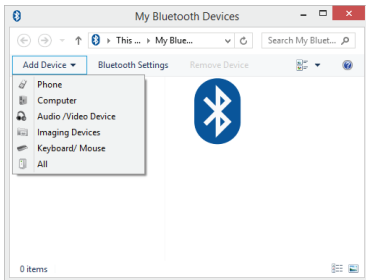
8. Click **Finish**.

## 3 Pairing

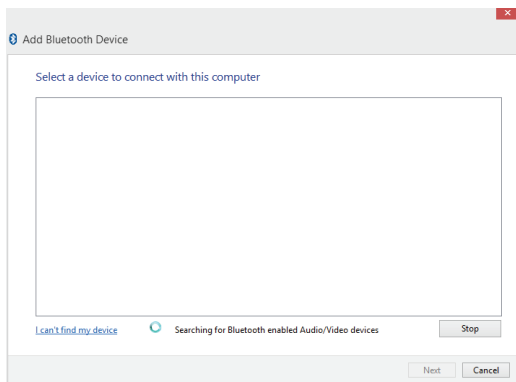
1. Click with right button to the bluetooth icon in the notification area and select **Show Bluetooth Devices**.



2. Click **Add Device** and select, for example, **Audio/Video device**.



3. Make sure that the device is visible during the searching. Select the found out device from the list and click **Next**.



4. After finishing the pairing click **Finish**.

During the pairing you may be prompted to enter the pairing code. You must enter the identical code to both devices. If you pair the earphones that do not enable to enter a code, please, try to use the combination of **0000** or **1234**, or have a look at the manual of the paired device.

## 4 Additional information

In setting the Bluetooth (the item in the menu after clicking with right button to the bluetooth icon in the notification area) you can set the incorporated services, file sharing, COM ports, PIM and others.

## 5 Problem solving

**Installation was carried out smoothly but the dongle is not detected by computer.**

Make sure that the USB port used for the dongle is functioning via connecting e.g. a keyboard or a mouse. If you have installed a different driver or software for bluetooth, the driver or software must be uninstalled.

## **The dongle is functioning but in searching no device is displayed.**

Make sure that the searched device is within the range - 50 m in the open space without obstacles or 10 m in the building. Make sure that the device is switched on and ready and in the searching mode.

### **FCC STATEMENT :**

This device complies with Part 15 of the FCC Rules. Operation is subject to the following two conditions:

(1) This device may not cause harmful interference, and (2) This device must accept any interference received, including interference that may cause undesired operation.

Warning: Changes or modifications not expressly approved by the party responsible for compliance could void the user's authority to operate the equipment.

NOTE: This equipment has been tested and found to comply with the limits for a Class B digital device, pursuant to Part 15 of the FCC Rules. These limits are designed to provide reasonable protection against harmful interference in a residential installation. This equipment generates uses and can radiate radio frequency energy and, if not installed and used in accordance with the instructions, may cause harmful interference to radio communications. However, there is no guarantee that interference will not occur in a particular installation. If this equipment does cause harmful interference to radio or television reception, which can be determined by turning the equipment off and on, the user is encouraged to try to correct the interference by one or more of the following measures:

Reorient or relocate the receiving antenna.

Increase the separation between the equipment and receiver.

Connect the equipment into an outlet on a circuit different from that to which the receiver is connected.

Consult the dealer or an experienced radio/TV technician for help.

### **RF warning statement:**

The device has been evaluated to meet general RF exposure requirement. The device can be used in portable exposure condition without restriction.