



INTELLIGENT APP ENABLED VOICE LANGUAGE TRANSLATOR

PRESS • SPEAK • TRANSLATE

INSTRUCTIONS



For Service or Support please
contact us toll free at 888-435-6976

Model BTLT160

IN THE BOX

Bluetooth Voice
Language
Translator Earphone



Set of 3 Ear Gels
Small, Medium
and Large



USB
Charging
Cable



WELCOME

Thank you for purchasing the Supreme Bluetooth Voice Language Translator. Our voice language translator is a powerful translation device which can instantly translate what you say in real time and play it back to locals in their native language. They can then reply to you and what they say will instantly be translated back to your earphone. It is now easy to carry on a conversation in a language that you have never spoken.

HOW TO WEAR

The unit comes with 3 sizes of Ear Gels for an optimal user experience. Try each of the Ear Gel sizes to pick the one that fits best for you. The best fit should feel tight and secure in your ear without causing discomfort.



EARPHONE CHARGING

It is recommended to fully charge the battery prior to first time use. It usually takes around 2 hour for the earphone to fully charge. Plug the supplied USB Cable into the earphone charging port and connect the other end of the cable to a USB port or USB Wall Charger. During charging, the LED Status Light will illuminate RED which indicates that the unit is charging. When charging is completed the LED will turn OFF.



EARPHONE SPECIFICATIONS

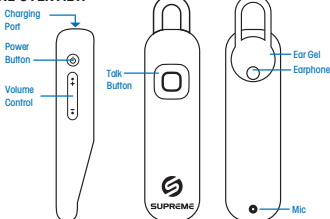
Bluetooth Version: 5.0, HEP, A2DP, HSP, AVRCP

Transmission Range: 33 Feet (10m) Battery: 90mAh Li-Polymer

Battery: 90mAh Li-Polymer; DC 5V, Approx 2 Hour Charge Time

Use Time Up to Up to 5 Hours / 120 Hours Standby

EARPHONE OVERVIEW



INDICATOR LIGHTS

No Light - Unit is Off | Fast Flash Blue - Unit is On and in Pairing Mode

Slow Flash Blue - Unit is On and BT Connected

Solid Red - Unit is Charging | Flashing Red - Low Battery

CALL HANDLING FUNCTIONS

Answer/End Call - Click the TALK Button

Adjust Call Volume - Click + or - side of Volume Button

Last Number Redial - Double Click TALK

Button Reject Call - Long Press TALK | Button Put Call on Hold to

Answer Incoming Call - Click TALK Button

MUSIC LISTENING FUNCTIONS

Play/Stop - Click the TALK Button

Adjust Music Volume- Click + or - side of Volume Talk Button

Next Song - Long Press + side of Volume Button

Previous Song - Long Press - side of Volume Button

START TRANSLATING



INTELLIGENT VOICE LANGUAGE TRANSLATOR APP



ST TRANSLATOR PRO



LANGUAGE APP REQUIREMENTS

To operate properly our Supreme Intelligent Voice Language Translation App requires a device running the latest versions of iOS or Android. Since our translation app is always learning and adding new words, all translations are done in real time which requires you to have an active Internet Data Plan or Wifi Connection in order for the app to work.

CONNECTING via BLUETOOTH for Apple iOS devices

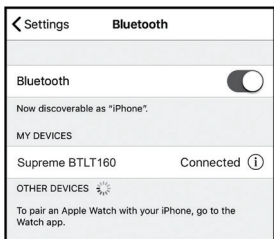
Turn on the earphone by Long Pressing the Power Button until the LED fast flashes in BLUE.

Go into the Settings Menu / Bluetooth Menu. Make sure Bluetooth is toggled ON.

Go to "OTHER DEVICES" at the bottom of the Bluetooth Menu and look for "**Supreme BTLT160**" in the list

Tap "**Supreme BTLT160**" in the list to connect your unit to Bluetooth. Your unit should now be connected.

Once connected, "**Supreme BTLT160**" will appear under "MY DEVICES" with the word "Connected" listed on the right side. Your unit is now paired and ready to use.



Downloading the Supreme Language Translator Pro App

Using your device, find the App Store Icon and tap it to access the Apple App Store.

Once connected to the App Store click on the search icon and in the search box type "**ST Translator Pro**" then tap search.

The "**ST Translator Pro**" app should show up in the search results. Tap GET and follow the prompts to download the app to your device. Once completely downloaded the Supreme Language Translator PRO app should appear as an Icon on your device.

CONNECTING via BLUETOOTH for Samsung/Android Devices

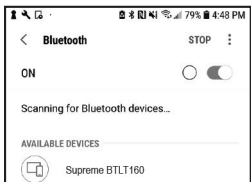
Turn on the earphone by Long Pressing the Power Button until the LED fast Flashes in BLUE.

Go into the Apps Menu Settings Menu Connections Menu Bluetooth Menu. Make sure Bluetooth is toggled ON.

Go to "AVAILABLE DEVICES" in the Bluetooth Menu and look for "**Supreme BTLT160**" in the list. If you cannot find "Supreme BTLT160" then touch SCAN to rescan for BT devices.

Tap "**Supreme BTLT160**" in the list to connect your unit to Bluetooth. Your unit should now be connected.

Once connected "**Supreme BTLT160**" will appear under "PAIRED DEVICES". Your unit is now paired and ready to use.



Please note some Android device manufacturers use slightly varied methods for connecting devices to Bluetooth.

Consult your device Owners Manual for specific instructions on connecting Bluetooth products

Downloading the Supreme Language Translator Pro App

Using your device, find the Play Store Icon and tap it to access the Google Play Store.



Once connected to the Google Play Store, click on the Google Play search icon and in the search box type "**ST Translator Pro**" then tap search.

The "**ST Translator Pro**" app should show up in the search results. Tap the ST Translator Pro Icon, on the next screen tap INSTALL to download the opp to your device. Once completely downloaded the Supreme Language Translator app should appear as an icon under APPS menu on your device.

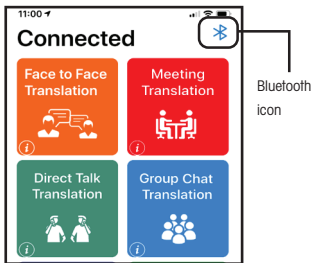
GETTING STARTED

Make sure your Supreme Translator earphone is ON and connected to your device. (Refer to "Connecting via Bluetooth" for help)

Launch the Supreme Language Translator Pro App. On the Top right hand of the screen you will see a Bluetooth icon, this icon should be BLUE which confirms that the earphone is properly connected to the app and ready for translation. (If the BT Icon is grayed out then please check that your earphone is connected via Bluetooth to your device.)

Throughout the app, you will see  icons, click on the  icon at any time for help and instructions regarding the use of that translation mode.

You can also view or download the complete PDF instructions for the ST Translator Pro App in the UTILITIES & MORE Section of the App.



FCC Statement

This equipment has been tested and found to comply with the limits for a Class B digital device, pursuant to part 15 of the FCC Rules. These limits are designed to provide reasonable protection against harmful interference in a residential installation. This equipment generates, uses and can radiate radio frequency energy and, if not installed and used in accordance with the instructions, may cause harmful interference to radio communications. However, there is no guarantee that interference will not occur in a particular installation. If this equipment does cause harmful interference to radio or television reception, which can be determined by turning the equipment off and on, the user is encouraged to try to correct the interference by one or more of the following measures:

- Reorient or relocate the receiving antenna.
- Increase the separation between the equipment and receiver.
- Connect the equipment into an outlet on a circuit different from that to which the receiver is connected.
- Consult the dealer or an experienced radio/TV technician for help.

Caution: Any changes or modifications to this device not explicitly approved by manufacturer could void your authority to operate this equipment.

This device complies with part 15 of the FCC Rules. Operation is subject to the following two conditions: (1) This device may not cause harmful interference, and (2) this device must accept any interference received, including interference that may cause undesired operation.

RF Exposure Information

The device has been evaluated to meet general RF exposure requirement. The device can be used in portable exposure condition without restriction.