

# MEASUREMENT 11

Type: Phone measurement (Complete)

Date of measurement: 01/02/2014

Measurement duration: 12 minutes 3 seconds

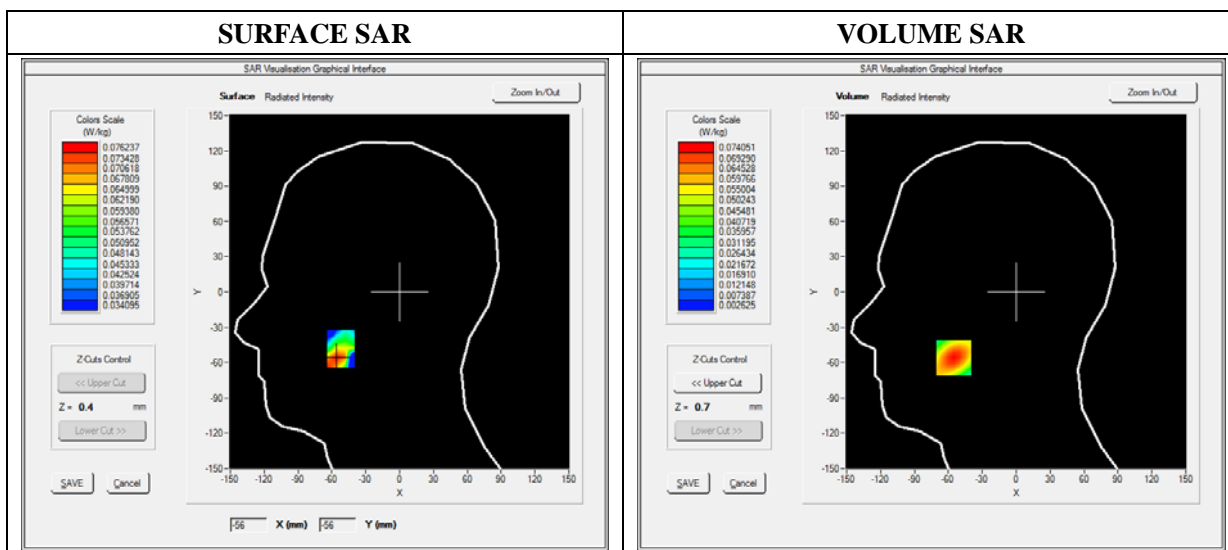
E-field Probe: SSE5 - SN 09/13 EP168; ConvF: 6.16; Calibrated: 03/21/2013

### A. Experimental conditions

<b>Area Scan</b>	sam_direct_droit2_surf8mm.txt
<b>Phantom</b>	Right head
<b>Device Position</b>	Cheek
<b>Band</b>	GSM1900
<b>Channels</b>	Low
<b>Signal</b>	TDMA (Crest factor: 8.0)

### B. SAR Measurement Results

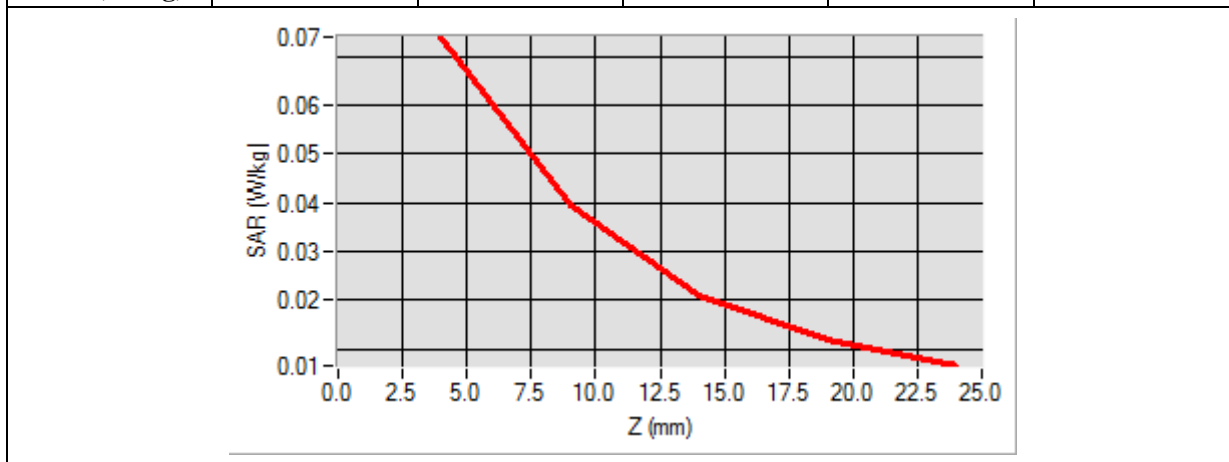
<b>Frequency (MHz)</b>	1850.200000
<b>Relative Permittivity (real part)</b>	39.400200
<b>Conductivity (S/m)</b>	1.431000
<b>Power Variation (%)</b>	-0.523000
<b>Ambient Temperature</b>	21.1
<b>Liquid Temperature</b>	21.3



Maximum location: X=-55.00, Y=-56.00

SAR 10g (W/Kg)	0.046082
SAR 1g (W/Kg)	0.084398

Z (mm)	0.00	4.00	9.00	14.00	19.00
SAR (W/Kg)	0.0000	0.0741	0.0394	0.0210	0.0118



<p><b>3D screen shot</b></p>	<p><b>Hot spot position</b></p>

# MEASUREMENT 12

Type: Phone measurement (Complete)

Date of measurement: 01/02/2014

Measurement duration: 12 minutes 3 seconds

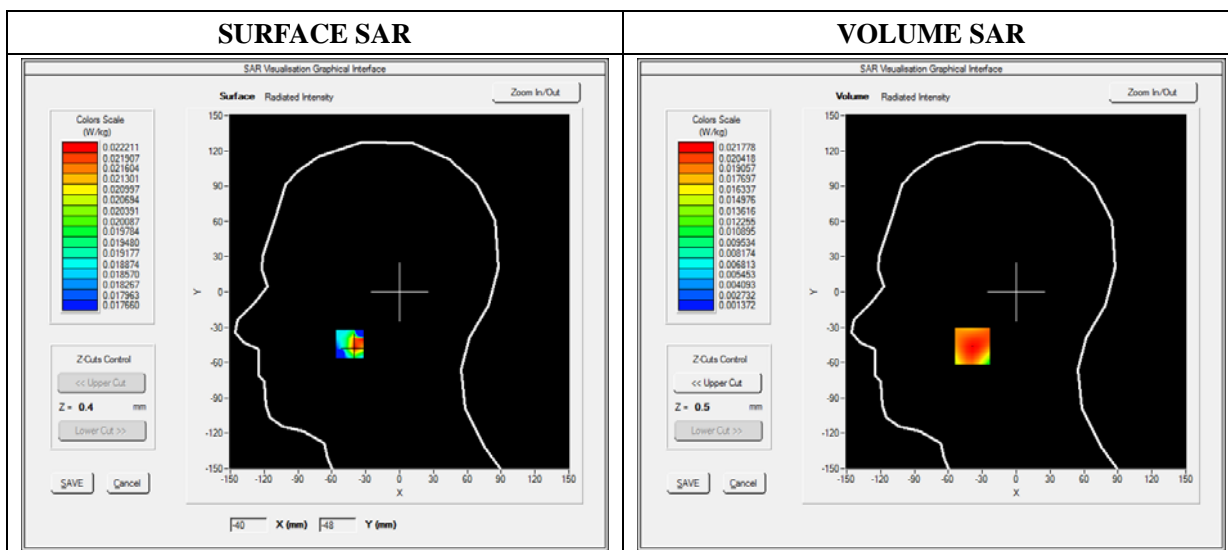
E-field Probe: SSE5 - SN 09/13 EP168; ConvF: 6.16; Calibrated: 03/21/2013

### A. Experimental conditions

<b>Area Scan</b>	sam_direct_droit2_surf8mm.txt
<b>Phantom</b>	Right head
<b>Device Position</b>	Tilt
<b>Band</b>	GSM1900
<b>Channels</b>	Low
<b>Signal</b>	TDMA (Crest factor: 8.0)

### B. SAR Measurement Results

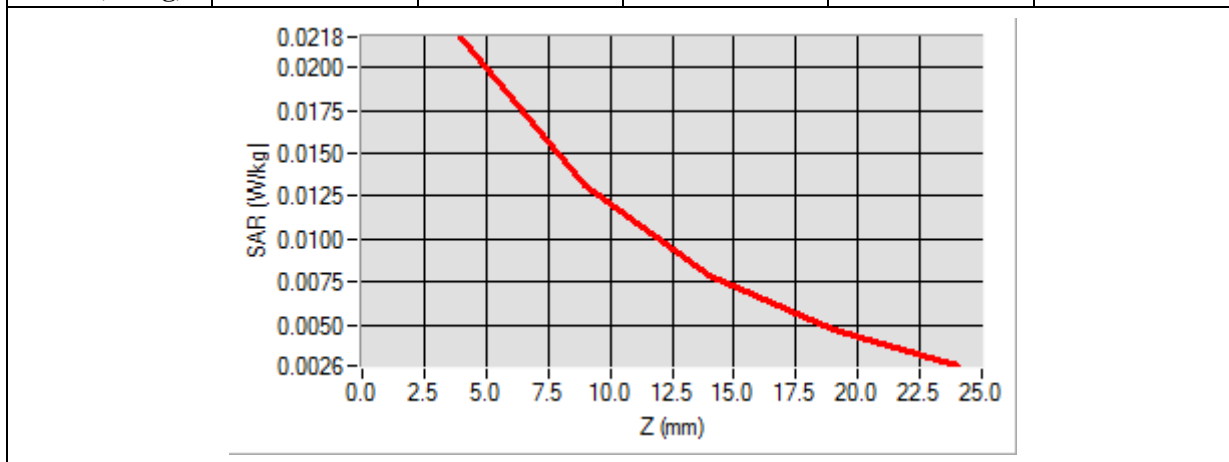
<b>Frequency (MHz)</b>	1850.200000
<b>Relative Permittivity (real part)</b>	39.400200
<b>Conductivity (S/m)</b>	1.431000
<b>Power Variation (%)</b>	-0.523000
<b>Ambient Temperature</b>	21.1
<b>Liquid Temperature</b>	21.3



Maximum location: X=-38.00, Y=-46.00

SAR 10g (W/Kg)	0.015065
SAR 1g (W/Kg)	0.025186

Z (mm)	0.00	4.00	9.00	14.00	19.00
SAR (W/Kg)	0.0000	0.0218	0.0131	0.0078	0.0047



<p><b>3D screen shot</b></p>	<p><b>Hot spot position</b></p>

# MEASUREMENT 13

Type: Phone measurement (Complete)

Date of measurement: 01/02/2014

Measurement duration: 11 minutes 48 seconds

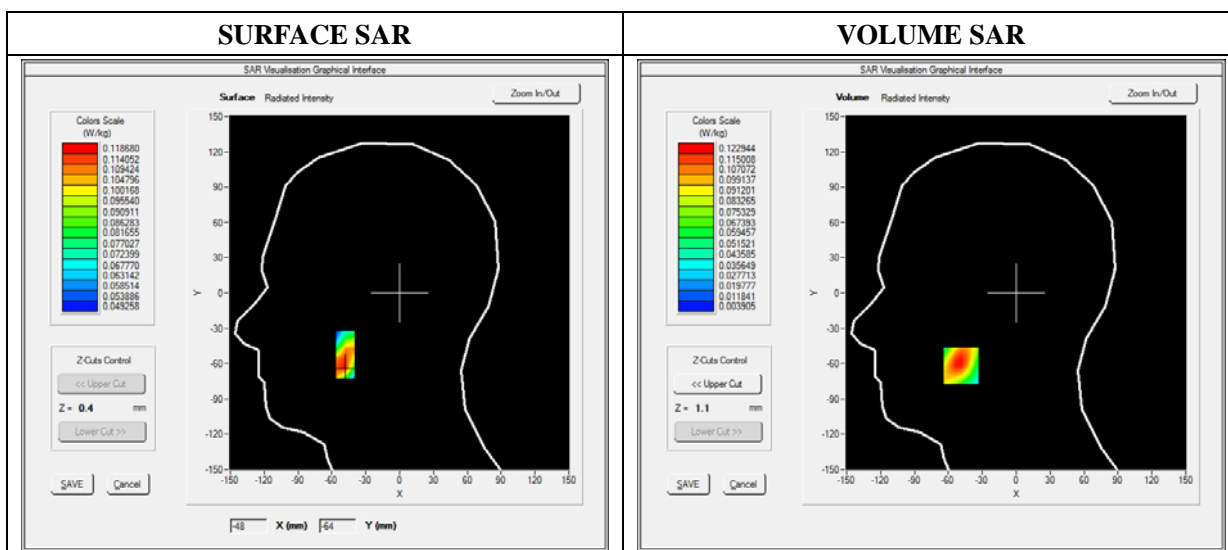
E-field Probe: SSE5 - SN 09/13 EP168; ConvF: 6.16; Calibrated: 03/21/2013

### A. Experimental conditions

<b>Area Scan</b>	sam_direct_droit2_surf8mm.txt
<b>Phantom</b>	Left head
<b>Device Position</b>	Cheek
<b>Band</b>	GSM1900
<b>Channels</b>	Low
<b>Signal</b>	TDMA (Crest factor: 8.0)

### B. SAR Measurement Results

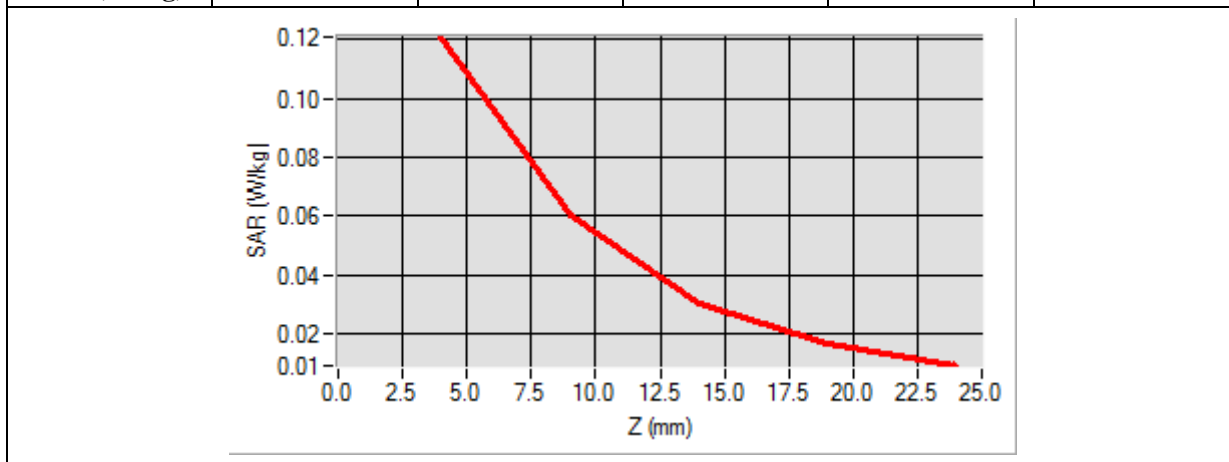
<b>Frequency (MHz)</b>	1850.200000
<b>Relative Permittivity (real part)</b>	39.400200
<b>Conductivity (S/m)</b>	1.431000
<b>Power Variation (%)</b>	-0.523000
<b>Ambient Temperature</b>	21.1
<b>Liquid Temperature</b>	21.3



Maximum location: X=-49.00, Y=-62.00

SAR 10g (W/Kg)	0.073928
SAR 1g (W/Kg)	0.141107

Z (mm)	0.00	4.00	9.00	14.00	19.00
SAR (W/Kg)	0.0000	0.1207	0.0604	0.0304	0.0166



<p><b>3D screen shot</b></p>	<p><b>Hot spot position</b></p>

# MEASUREMENT 14

Type: Phone measurement (Complete)

Date of measurement: 01/02/2014

Measurement duration: 12 minutes 3 seconds

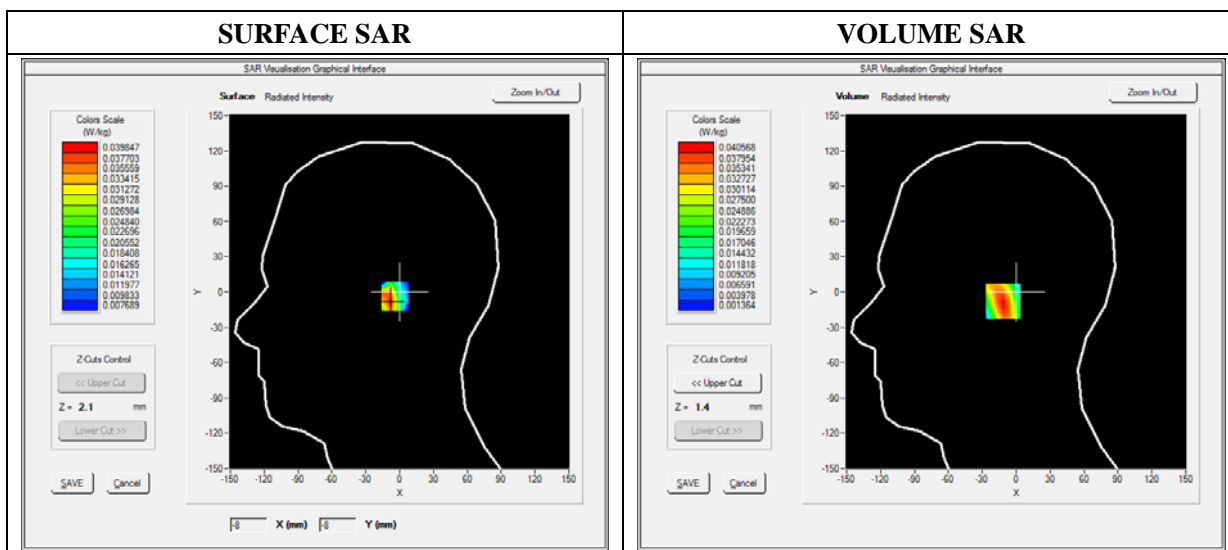
E-field Probe: SSE5 - SN 09/13 EP168; ConvF: 6.16; Calibrated: 03/21/2013

### A. Experimental conditions

<b>Area Scan</b>	sam_direct_droit2_surf8mm.txt
<b>Phantom</b>	Left head
<b>Device Position</b>	Tilt
<b>Band</b>	GSM1900
<b>Channels</b>	Low
<b>Signal</b>	TDMA (Crest factor: 8.0)

### B. SAR Measurement Results

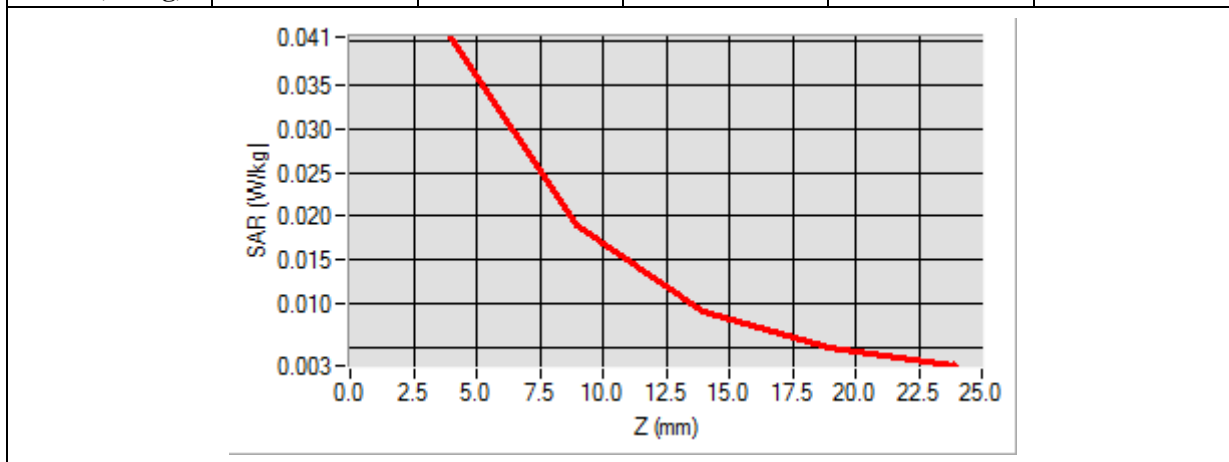
<b>Frequency (MHz)</b>	1850.200000
<b>Relative Permittivity (real part)</b>	39.400200
<b>Conductivity (S/m)</b>	1.431000
<b>Power Variation (%)</b>	-0.523000
<b>Ambient Temperature</b>	21.1
<b>Liquid Temperature</b>	21.3



Maximum location: X=-9.00, Y=-8.00

SAR 10g (W/Kg)	0.023248
SAR 1g (W/Kg)	0.045783

Z (mm)	0.00	4.00	9.00	14.00	19.00
SAR (W/Kg)	0.0000	0.0406	0.0190	0.0090	0.0049



<p><b>3D screen shot</b></p>	<p><b>Hot spot position</b></p>



# MEASUREMENT 15

Type: Phone measurement (Complete)

Date of measurement: 01/02/2014

Measurement duration: 12 minutes 3 seconds

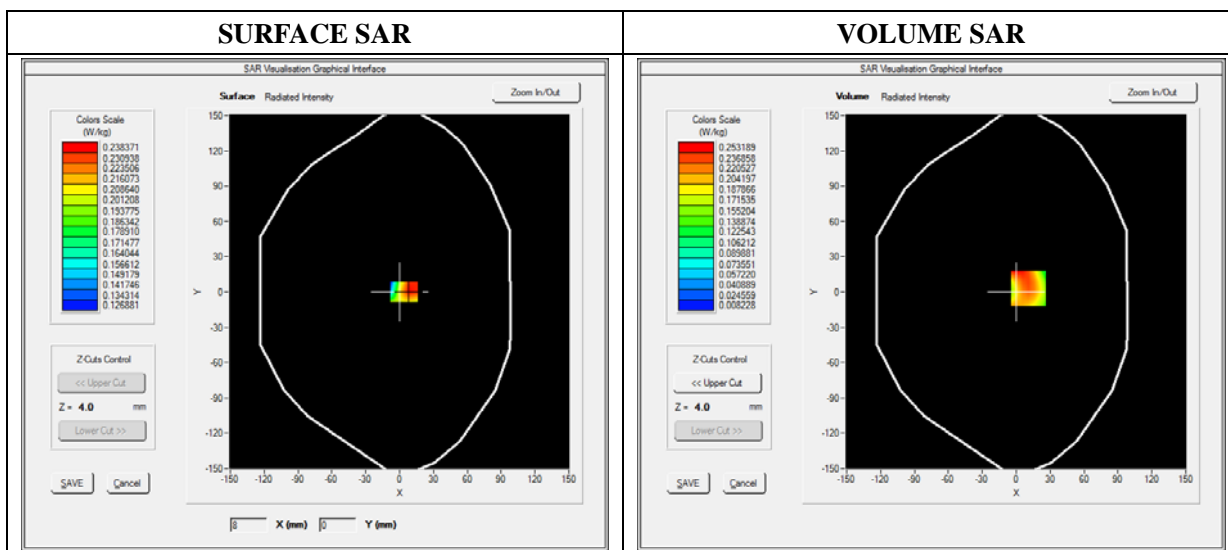
E-field Probe: SSE5 - SN 09/13 EP168; ConvF: 6.30; Calibrated: 03/21/2013

### A. Experimental conditions

<b>Area Scan</b>	sam_direct_droit2_surf8mm.txt
<b>Phantom</b>	Flat Plane
<b>Device Position</b>	Body-worn
<b>Band</b>	GSM1900
<b>Channels</b>	Low
<b>Signal</b>	TDMA (Crest factor: 8.0)

### B. SAR Measurement Results

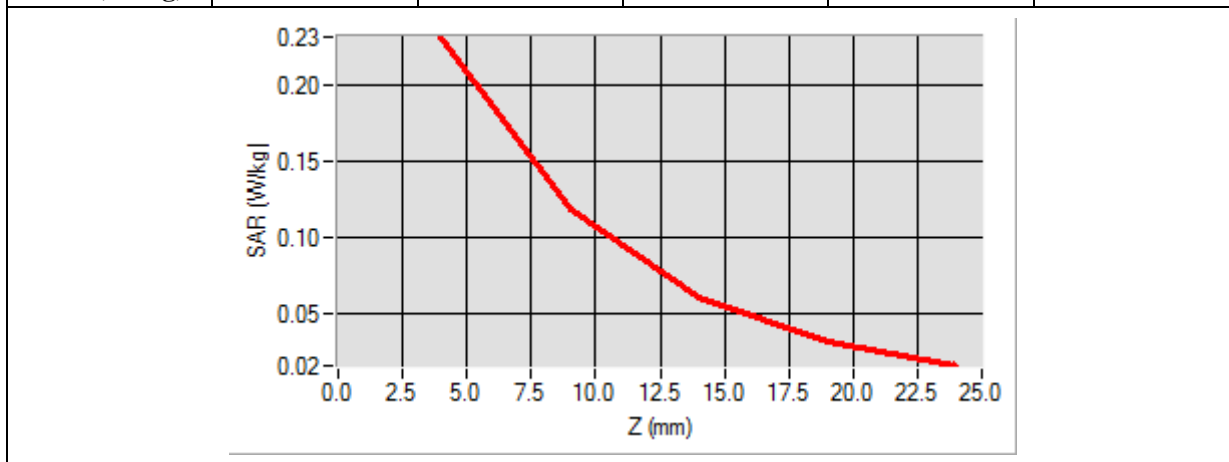
<b>Frequency (MHz)</b>	1850.200000
<b>Relative Permittivity (real part)</b>	51.202000
<b>Conductivity (S/m)</b>	1.510200
<b>Power Variation (%)</b>	0.752100
<b>Ambient Temperature</b>	21.1
<b>Liquid Temperature</b>	21.3



Maximum location: X=11.00, Y=3.00

SAR 10g (W/Kg)	0.149378
SAR 1g (W/Kg)	0.275488

Z (mm)	0.00	4.00	9.00	14.00	19.00
SAR (W/Kg)	0.0000	0.2323	0.1187	0.0597	0.0310



3D screen shot	Hot spot position

# MEASUREMENT 16

Type: Phone measurement (Complete)

Date of measurement: 01/02/2014

Measurement duration: 12 minutes 3 seconds

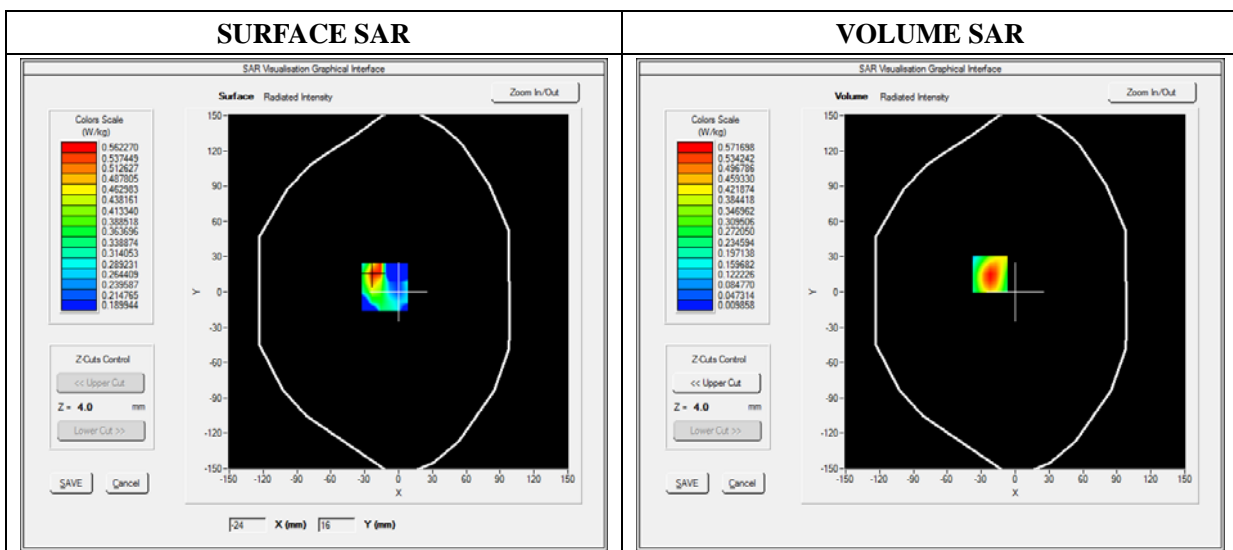
E-field Probe: SSE5 - SN 09/13 EP168; ConvF: 6.30; Calibrated: 03/21/2013

### A. Experimental conditions

<b>Area Scan</b>	sam_direct_droit2_surf8mm.txt
<b>Phantom</b>	Flat plane
<b>Device Position</b>	Front
<b>Band</b>	GPRS1900_4TX
<b>Channels</b>	Low
<b>Signal</b>	Duty Cycle: 3.00 (Crest factor: 3.00)

### B. SAR Measurement Results

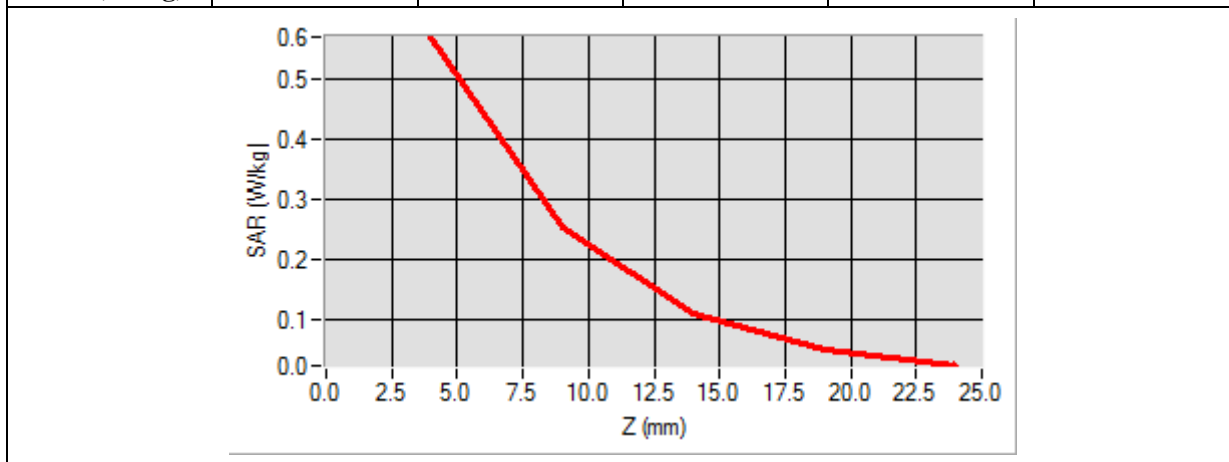
<b>Frequency (MHz)</b>	1850.200000
<b>Relative Permittivity (real part)</b>	51.202000
<b>Conductivity (S/m)</b>	1.510200
<b>Power Variation (%)</b>	0.752100
<b>Ambient Temperature</b>	21.1
<b>Liquid Temperature</b>	21.3



Maximum location: X=-22.00, Y=15.00

SAR 10g (W/Kg)	0.254649
SAR 1g (W/Kg)	0.529734

Z (mm)	0.00	4.00	9.00	14.00	19.00
SAR (W/Kg)	0.0000	0.5717	0.2544	0.1095	0.0504



<b>3D screen shot</b>	<b>Hot spot position</b>

# MEASUREMENT 17

Type: Phone measurement (Complete)

Date of measurement: 01/02/2014

Measurement duration: 12 minutes 3 seconds

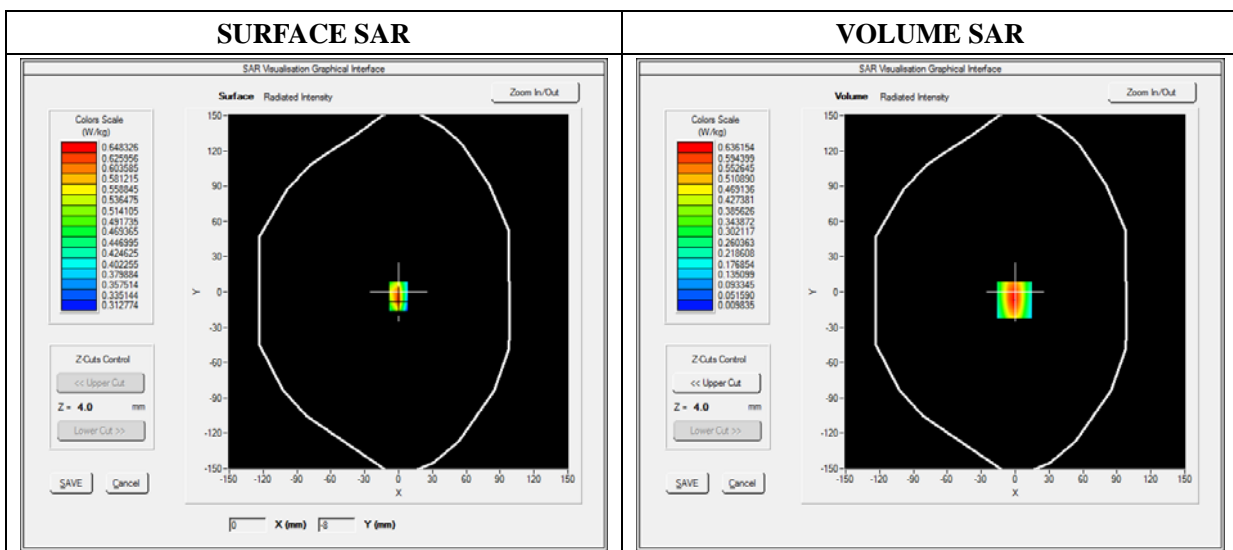
E-field Probe: SSE5 - SN 09/13 EP168; ConvF: 6.30; Calibrated: 03/21/2013

### A. Experimental conditions

<b>Area Scan</b>	sam_direct_droit2_surf8mm.txt
<b>Phantom</b>	Flat plane
<b>Device Position</b>	Back
<b>Band</b>	GPRS190_4TX
<b>Channels</b>	Low
<b>Signal</b>	Duty Cycle: 3.00 (Crest factor: 3.00)

### B. SAR Measurement Results

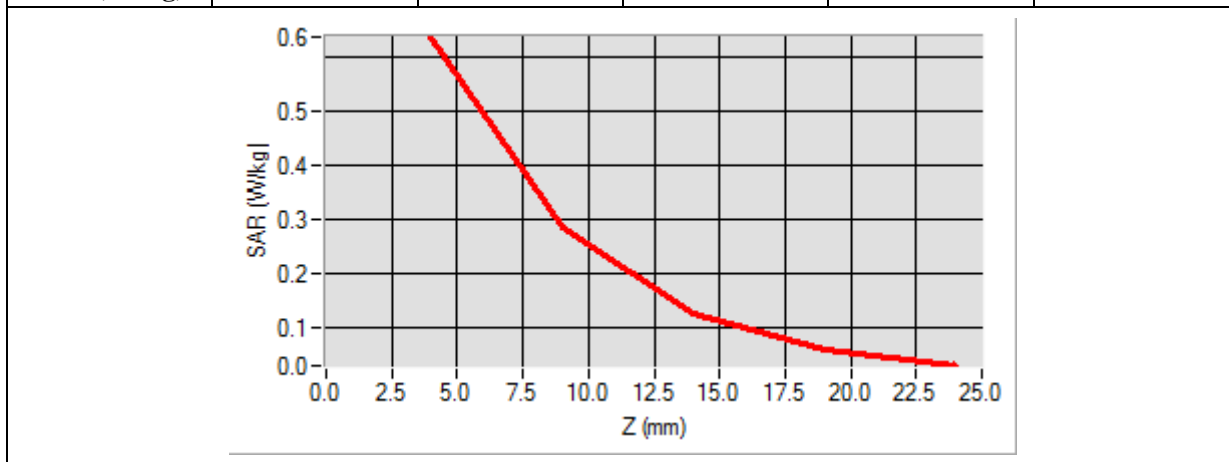
<b>Frequency (MHz)</b>	1850.200000
<b>Relative Permittivity (real part)</b>	51.202000
<b>Conductivity (S/m)</b>	1.510200
<b>Power Variation (%)</b>	0.752100
<b>Ambient Temperature</b>	21.1
<b>Liquid Temperature</b>	21.3



Maximum location: X=-1.00, Y=-7.00

SAR 10g (W/Kg)	0.281345
SAR 1g (W/Kg)	0.585642

Z (mm)	0.00	4.00	9.00	14.00	19.00
SAR (W/Kg)	0.0000	0.6362	0.2855	0.1252	0.0596



3D screen shot	Hot spot position

# MEASUREMENT 18

Type: Phone measurement (Complete)

Date of measurement: 01/02/2014

Measurement duration: 12 minutes 3 seconds

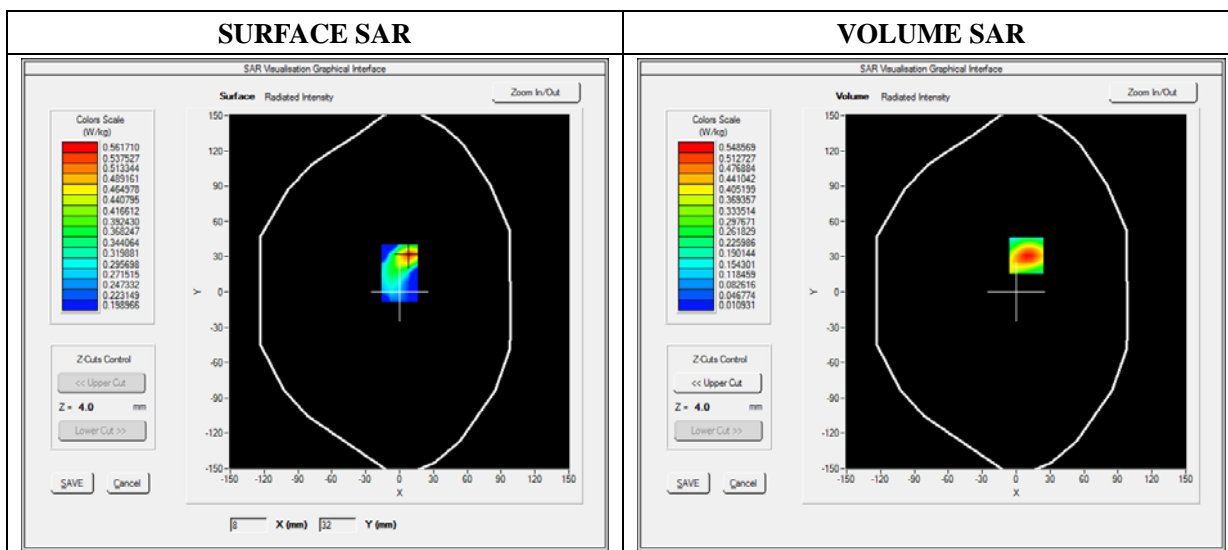
E-field Probe: SSE5 - SN 09/13 EP168; ConvF: 6.30; Calibrated: 03/21/2013

### A. Experimental conditions

<b>Area Scan</b>	sam_direct_droit2_surf8mm.txt
<b>Phantom</b>	Flat plane
<b>Device Position</b>	Bottom
<b>Band</b>	GPRS850_4TX
<b>Channels</b>	Low
<b>Signal</b>	Duty Cycle: 3.00 (Crest factor: 3.00)

### B. SAR Measurement Results

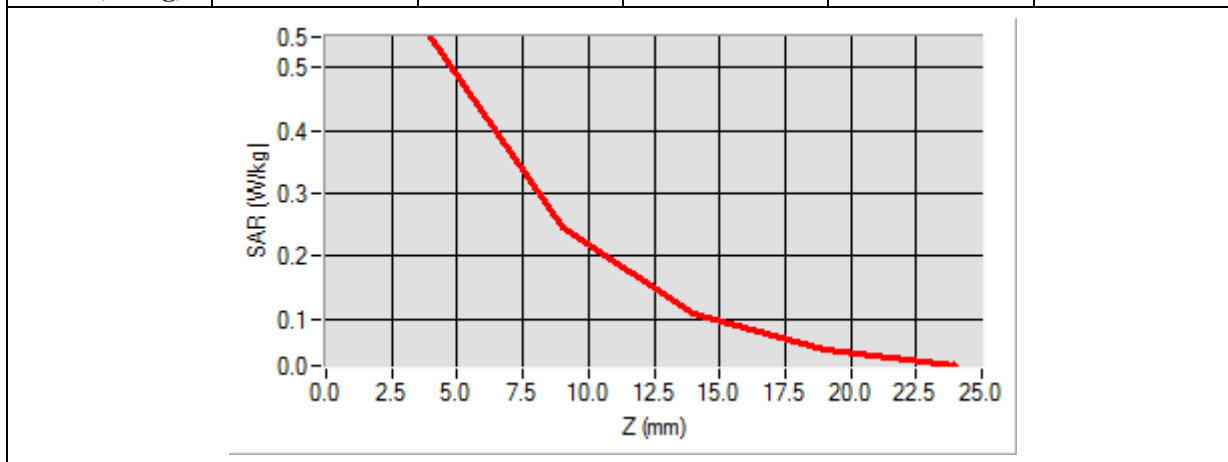
<b>Frequency (MHz)</b>	1850.200000
<b>Relative Permittivity (real part)</b>	51.202000
<b>Conductivity (S/m)</b>	1.510200
<b>Power Variation (%)</b>	0.752100
<b>Ambient Temperature</b>	21.1
<b>Liquid Temperature</b>	21.3



Maximum location: X=9.00, Y=31.00

SAR 10g (W/Kg)	0.245044
SAR 1g (W/Kg)	0.506078

Z (mm)	0.00	4.00	9.00	14.00	19.00
SAR (W/Kg)	0.0000	0.5486	0.2470	0.1087	0.0519



<p><b>3D screen shot</b></p>	<p><b>Hot spot position</b></p>



# MEASUREMENT 19

Type: Phone measurement (Complete)

Date of measurement: 01/02/2014

Measurement duration: 12 minutes 3 seconds

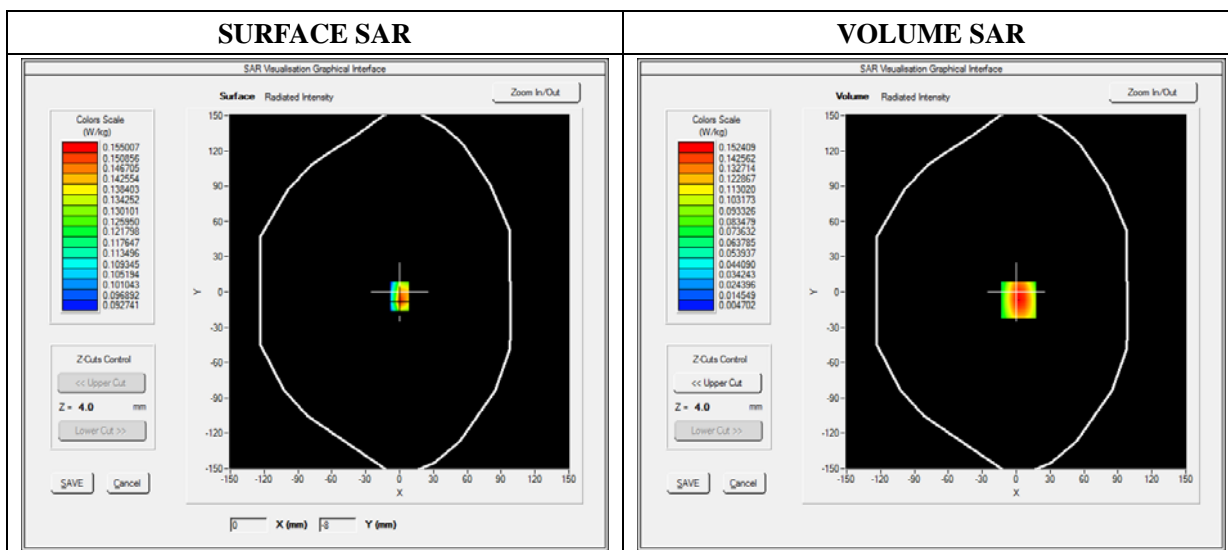
E-field Probe: SSE5 - SN 09/13 EP168; ConvF: 6.30; Calibrated: 03/21/2013

### A. Experimental conditions

<b>Area Scan</b>	sam_direct_droit2_surf8mm.txt
<b>Phantom</b>	Flat plane
<b>Device Position</b>	Right
<b>Band</b>	GPRS850_4TX
<b>Channels</b>	Low
<b>Signal</b>	Duty Cycle: 3.00 (Crest factor: 3.00)

### B. SAR Measurement Results

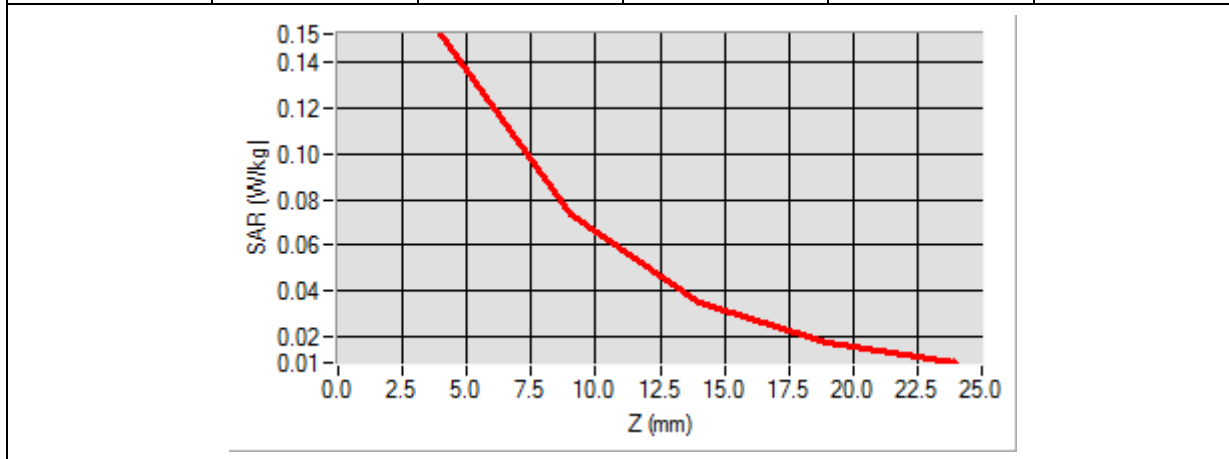
<b>Frequency (MHz)</b>	1850.200000
<b>Relative Permittivity (real part)</b>	51.202000
<b>Conductivity (S/m)</b>	1.510200
<b>Power Variation (%)</b>	0.752100
<b>Ambient Temperature</b>	21.1
<b>Liquid Temperature</b>	21.3



Maximum location: X=2.00, Y=-7.00

SAR 10g (W/Kg)	0.074267
SAR 1g (W/Kg)	0.143501

Z (mm)	0.00	4.00	9.00	14.00	19.00
SAR (W/Kg)	0.0000	0.1524	0.0730	0.0344	0.0172



3D screen shot	Hot spot position

# MEASUREMENT 20

Type: Phone measurement (Complete)

Date of measurement: 01/02/2014

Measurement duration: 12 minutes 3 seconds

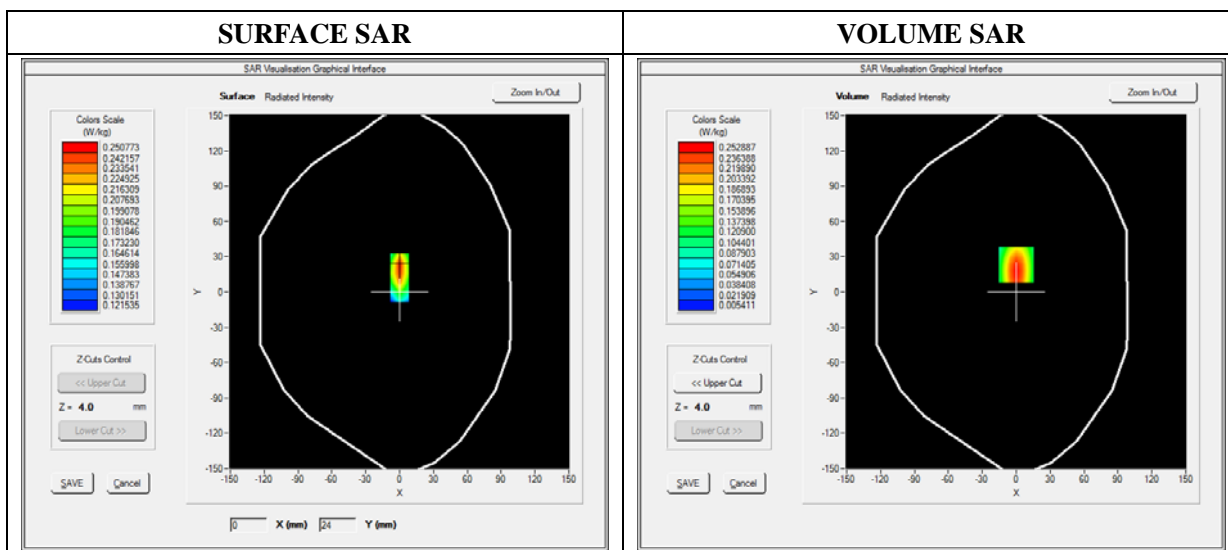
E-field Probe: SSE5 - SN 09/13 EP168; ConvF: 6.30; Calibrated: 03/21/2013

### A. Experimental conditions

<b>Area Scan</b>	sam_direct_droit2_surf8mm.txt
<b>Phantom</b>	Flat plane
<b>Device Position</b>	Left
<b>Band</b>	GPRS850_4TX
<b>Channels</b>	Low
<b>Signal</b>	Duty Cycle: 3.00 (Crest factor: 3.00)

### B. SAR Measurement Results

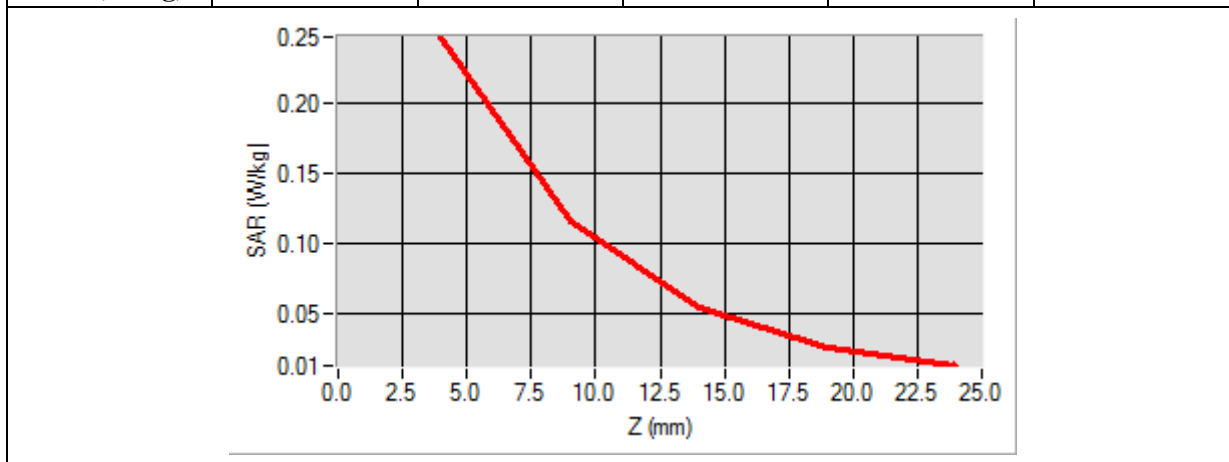
<b>Frequency (MHz)</b>	1850.200000
<b>Relative Permittivity (real part)</b>	51.202000
<b>Conductivity (S/m)</b>	1.510200
<b>Power Variation (%)</b>	0.752100
<b>Ambient Temperature</b>	21.1
<b>Liquid Temperature</b>	21.3



Maximum location: X=0.00, Y=23.00

SAR 10g (W/Kg)	0.118714
SAR 1g (W/Kg)	0.236348

Z (mm)	0.00	4.00	9.00	14.00	19.00
SAR (W/Kg)	0.0000	0.2478	0.1162	0.0531	0.0256



<p><b>3D screen shot</b></p>	<p><b>Hot spot position</b></p>
<p>A 3D perspective view of a grey device with a grid of green dots on its surface. A color-coded hot spot is visible, with red and orange indicating the highest SAR values.</p>	<p>A vertical rectangular bar with a color gradient from yellow at the bottom to red at the top, representing the vertical position of the hot spot.</p>

# MEASUREMENT 21

Type: Phone measurement (Complete)

Date of measurement: 01/02/2014

Measurement duration: 12 minutes 3 seconds

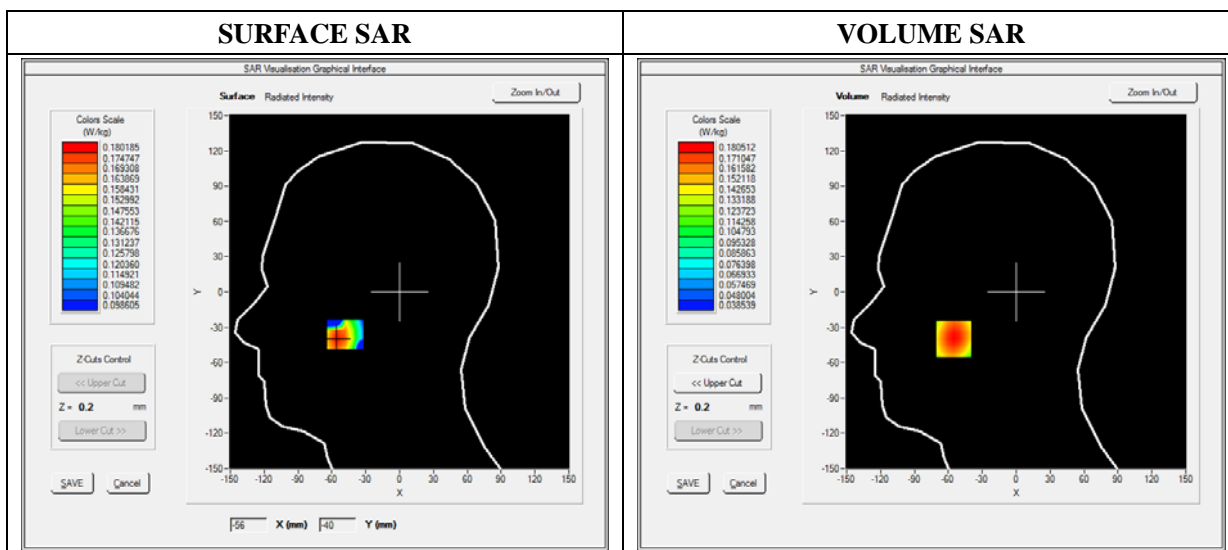
E-field Probe: SSE5 - SN 09/13 EP168; ConvF: 6.25; Calibrated: 03/21/2013

### A. Experimental conditions

<b>Area Scan</b>	sam_direct_droit2_surf8mm.txt
<b>Phantom</b>	Right head
<b>Device Position</b>	Cheek
<b>Band</b>	WCDMA850_RMC
<b>Channels</b>	Middle
<b>Signal</b>	Duty Cycle: 1.00 (Crest factor: 1.0)

### B. SAR Measurement Results

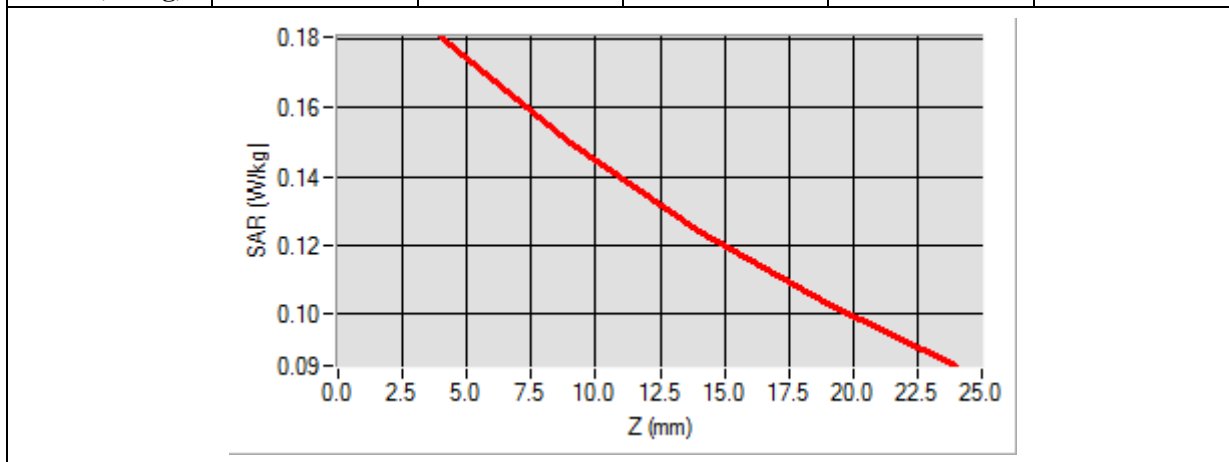
<b>Frequency (MHz)</b>	836.400000
<b>Relative Permittivity (real part)</b>	41.400000
<b>Conductivity (S/m)</b>	0.880000
<b>Power Variation (%)</b>	1.810000
<b>Ambient Temperature</b>	21.1
<b>Liquid Temperature</b>	21.3



Maximum location: X=-55.00, Y=-40.00

SAR 10g (W/Kg)	0.135375
SAR 1g (W/Kg)	0.173981

Z (mm)	0.00	4.00	9.00	14.00	19.00
SAR (W/Kg)	0.0000	0.1805	0.1496	0.1242	0.1032



<p><b>3D screen shot</b></p>	<p><b>Hot spot position</b></p>

# MEASUREMENT 22

Type: Phone measurement (Complete)

Date of measurement: 01/02/2014

Measurement duration: 12 minutes 3 seconds

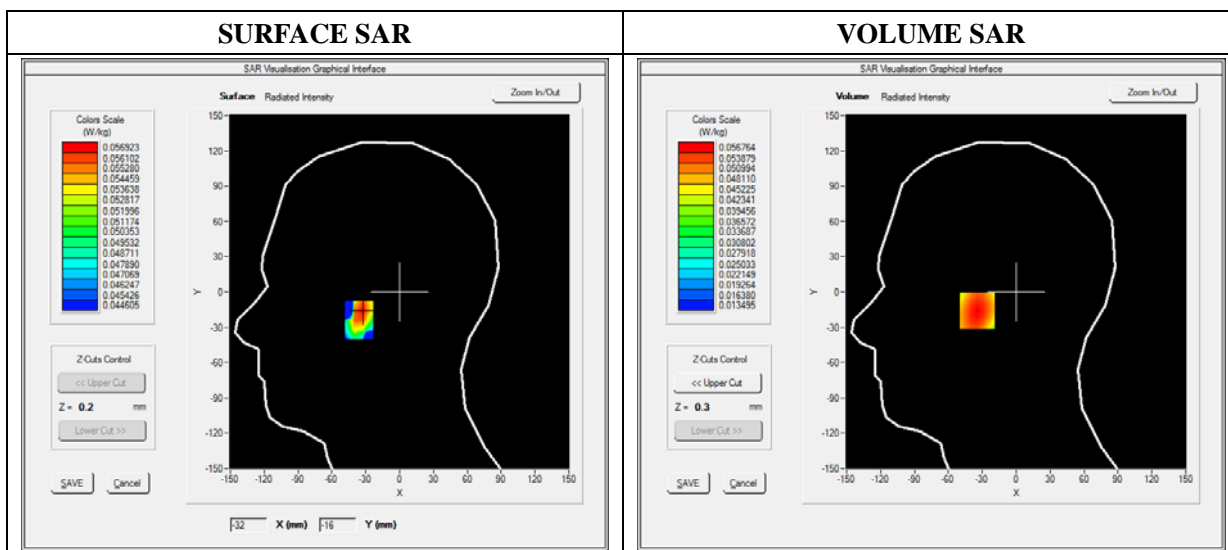
E-field Probe: SSE5 - SN 09/13 EP168; ConvF: 6.25; Calibrated: 03/21/2013

### A. Experimental conditions

<b>Area Scan</b>	sam_direct_droit2_surf8mm.txt
<b>Phantom</b>	Right head
<b>Device Position</b>	Tilt
<b>Band</b>	WCDMA850_RMC
<b>Channels</b>	Middle
<b>Signal</b>	Duty Cycle: 1.00 (Crest factor: 1.0)

### B. SAR Measurement Results

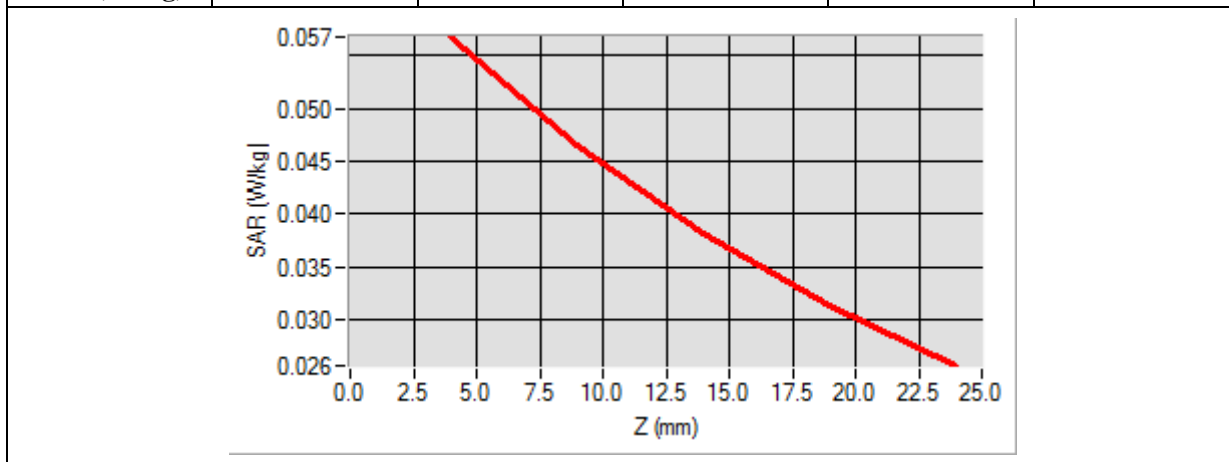
<b>Frequency (MHz)</b>	836.400000
<b>Relative Permittivity (real part)</b>	41.400000
<b>Conductivity (S/m)</b>	0.880000
<b>Power Variation (%)</b>	1.810000
<b>Ambient Temperature</b>	21.1
<b>Liquid Temperature</b>	21.3



Maximum location: X=-33.00, Y=-16.00

SAR 10g (W/Kg)	0.042556
SAR 1g (W/Kg)	0.054721

Z (mm)	0.00	4.00	9.00	14.00	19.00
SAR (W/Kg)	0.0000	0.0568	0.0465	0.0382	0.0314



<b>3D screen shot</b>	<b>Hot spot position</b>



# MEASUREMENT 23

Type: Phone measurement (Complete)

Date of measurement: 01/02/2014

Measurement duration: 12 minutes 3 seconds

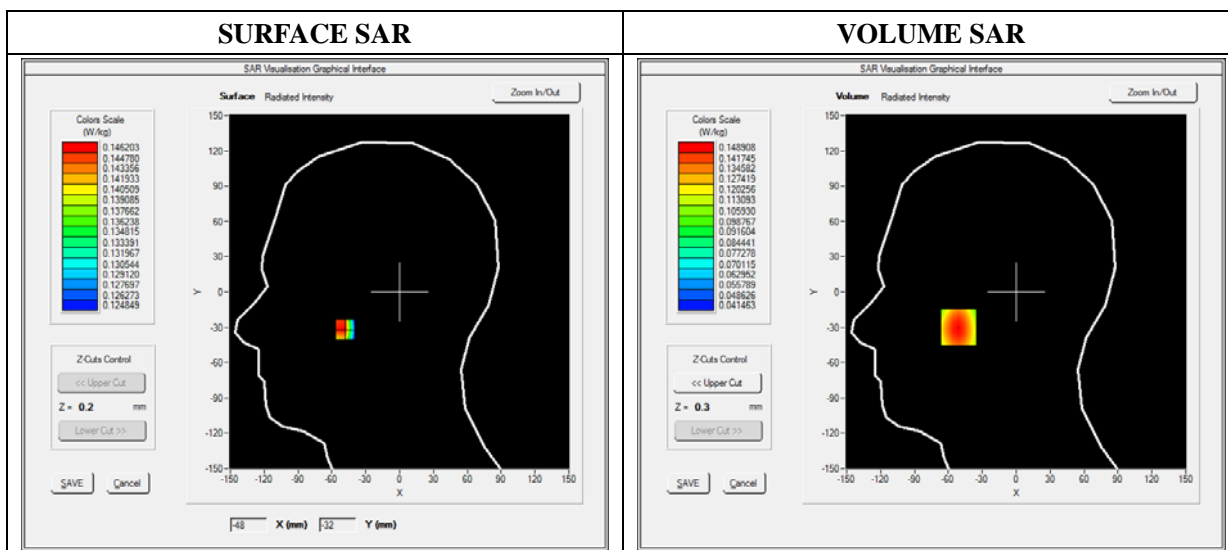
E-field Probe: SSE5 - SN 09/13 EP168; ConvF: 6.25; Calibrated: 03/21/2013

### A. Experimental conditions

<b>Area Scan</b>	sam_direct_droit2_surf8mm.txt
<b>Phantom</b>	Left head
<b>Device Position</b>	Cheek
<b>Band</b>	WCDMA850_RMC
<b>Channels</b>	Middle
<b>Signal</b>	Duty Cycle: 1.00 (Crest factor: 1.0)

### B. SAR Measurement Results

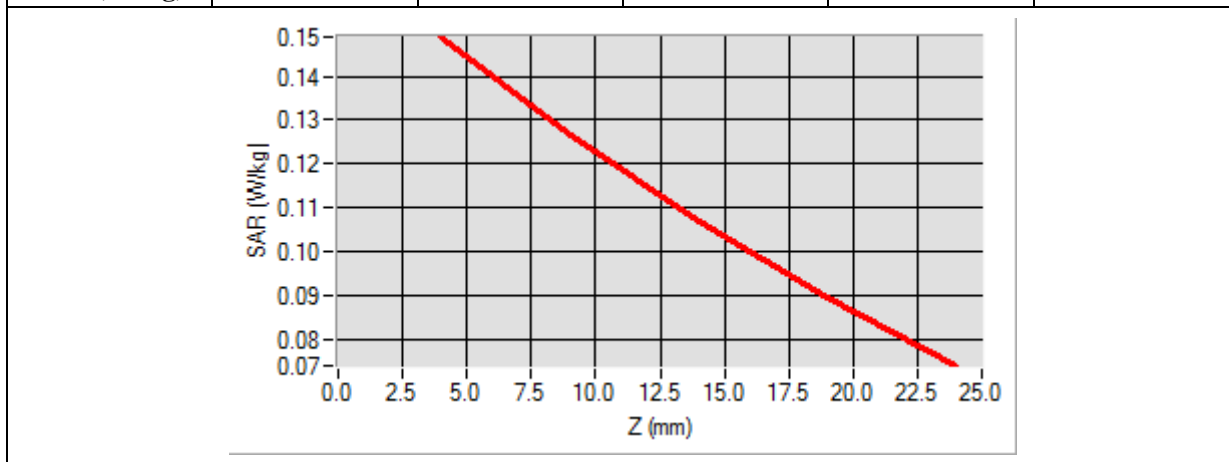
<b>Frequency (MHz)</b>	836.400000
<b>Relative Permittivity (real part)</b>	41.400000
<b>Conductivity (S/m)</b>	0.880000
<b>Power Variation (%)</b>	1.810000
<b>Ambient Temperature</b>	21.1
<b>Liquid Temperature</b>	21.3



Maximum location: X=-51.00, Y=-30.00

SAR 10g (W/Kg)	0.113455
SAR 1g (W/Kg)	0.143476

Z (mm)	0.00	4.00	9.00	14.00	19.00
SAR (W/Kg)	0.0000	0.1489	0.1265	0.1069	0.0895



3D screen shot	Hot spot position

# MEASUREMENT 24

Type: Phone measurement (Complete)

Date of measurement: 01/02/2014

Measurement duration: 12 minutes 3 seconds

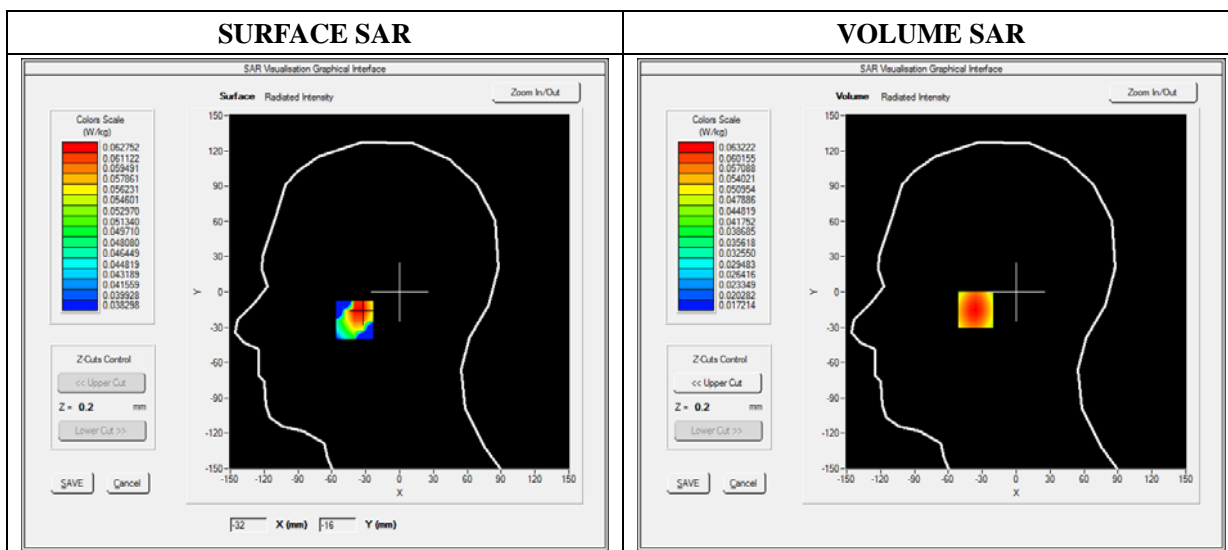
E-field Probe: SSE5 - SN 09/13 EP168; ConvF: 6.25; Calibrated: 03/21/2013

### A. Experimental conditions

<b>Area Scan</b>	sam_direct_droit2_surf8mm.txt
<b>Phantom</b>	Left head
<b>Device Position</b>	Tilt
<b>Band</b>	WCDMA850_RMC
<b>Channels</b>	Middle
<b>Signal</b>	Duty Cycle: 1.00 (Crest factor: 1.0)

### B. SAR Measurement Results

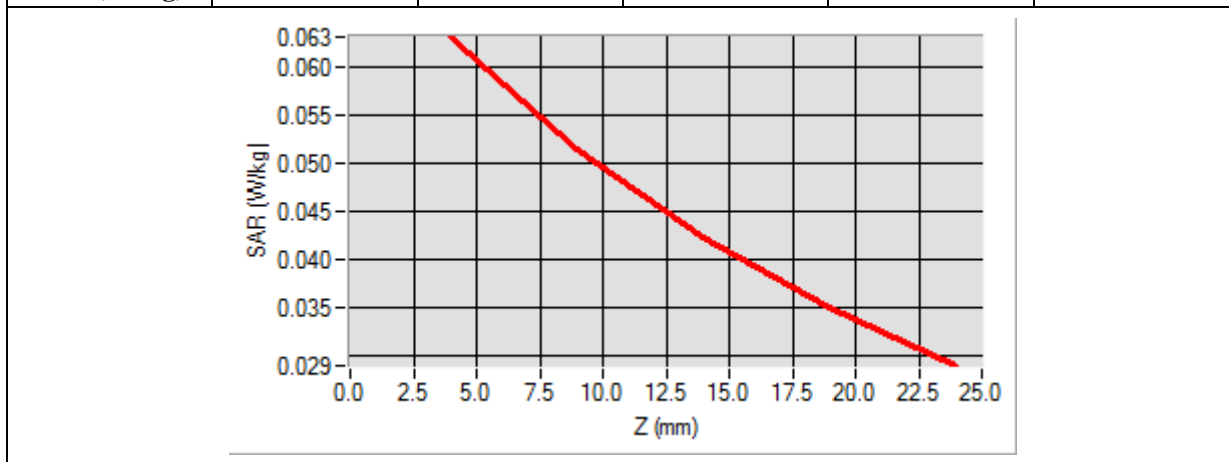
<b>Frequency (MHz)</b>	836.400000
<b>Relative Permittivity (real part)</b>	41.400000
<b>Conductivity (S/m)</b>	0.880000
<b>Power Variation (%)</b>	1.810000
<b>Ambient Temperature</b>	21.1
<b>Liquid Temperature</b>	21.3



Maximum location: X=-35.00, Y=-15.00

SAR 10g (W/Kg)	0.047136
SAR 1g (W/Kg)	0.060862

Z (mm)	0.00	4.00	9.00	14.00	19.00
SAR (W/Kg)	0.0000	0.0632	0.0516	0.0424	0.0351



<p><b>3D screen shot</b></p>	<p><b>Hot spot position</b></p>

# MEASUREMENT 25

Type: Phone measurement (Complete)

Date of measurement: 01/02/2014

Measurement duration: 12 minutes 3 seconds

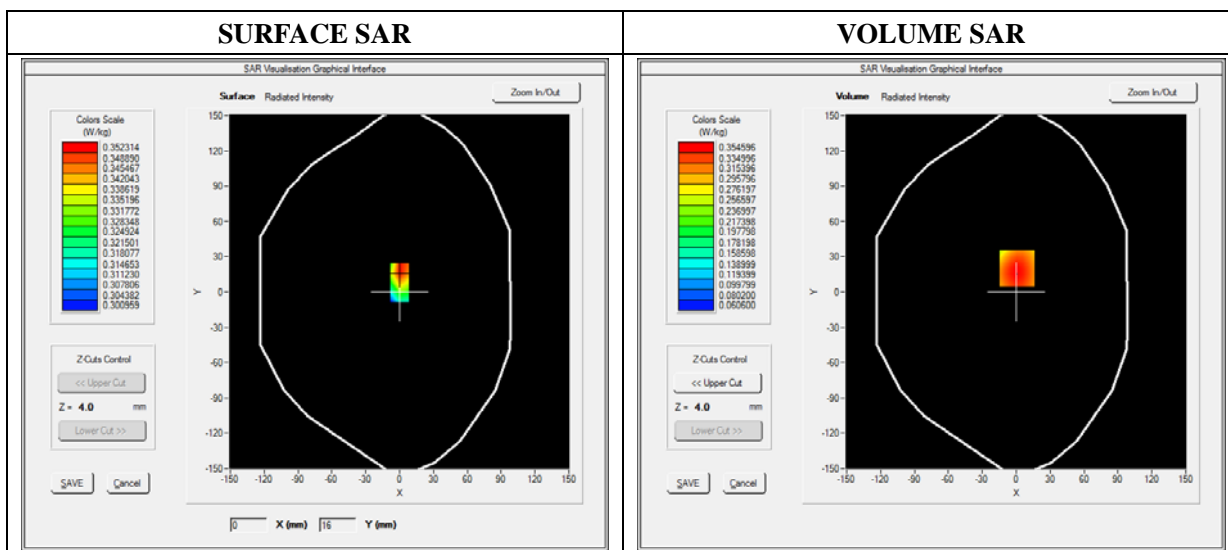
E-field Probe: SSE5 - SN 09/13 EP168; ConvF: 6.50; Calibrated: 03/21/2013

### A. Experimental conditions

<b>Area Scan</b>	sam_direct_droit2_surf8mm.txt
<b>Phantom</b>	Flat Plane
<b>Device Position</b>	Front
<b>Band</b>	WCDMA850_RMC
<b>Channels</b>	Middle
<b>Signal</b>	Duty Cycle: 1.00 (Crest factor: 1.00)

### B. SAR Measurement Results

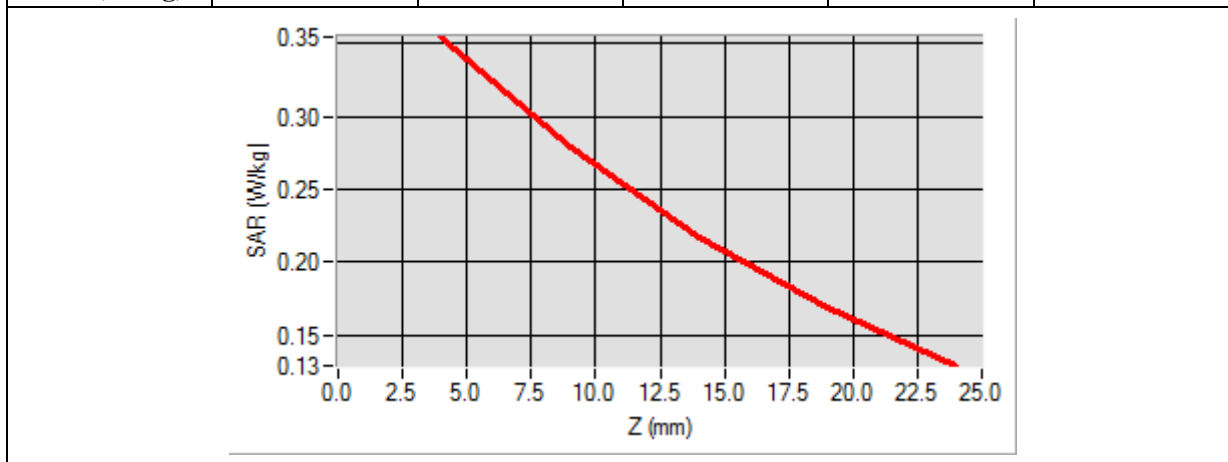
<b>Frequency (MHz)</b>	836.400000
<b>Relative Permittivity (real part)</b>	55.802100
<b>Conductivity (S/m)</b>	0.96000
<b>Power Variation (%)</b>	0.80000
<b>Ambient Temperature</b>	21.1
<b>Liquid Temperature</b>	21.3



Maximum location: X=1.00, Y=20.00

SAR 10g (W/Kg)	0.257835
SAR 1g (W/Kg)	0.342356

Z (mm)	0.00	4.00	9.00	14.00	19.00
SAR (W/Kg)	0.0000	0.3544	0.2782	0.2175	0.1691



<b>3D screen shot</b>	<b>Hot spot position</b>
<p>A 3D perspective view of a grey device. A grid of small colored dots is overlaid on the top surface, showing a color gradient from blue (low SAR) to red (high SAR). The highest SAR values are concentrated in a small rectangular area in the center of the top surface.</p>	<p>A solid red rectangle is centered on a white background, representing the location of the maximum SAR (hot spot) on the device's surface.</p>

# MEASUREMENT 26

Type: Phone measurement (Complete)

Date of measurement: 01/02/2014

Measurement duration: 12 minutes 3 seconds

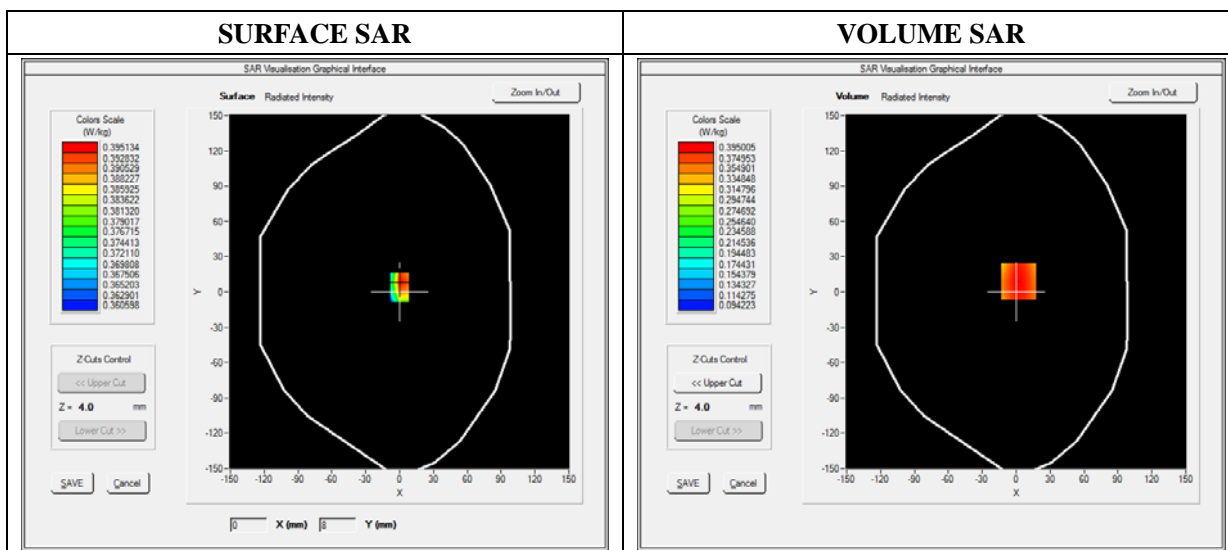
E-field Probe: SSE5 - SN 09/13 EP168; ConvF: 6.50; Calibrated: 03/21/2013

### A. Experimental conditions

<b>Area Scan</b>	sam_direct_droit2_surf8mm.txt
<b>Phantom</b>	Flat Plane
<b>Device Position</b>	Back
<b>Band</b>	WCDMA850_RMC
<b>Channels</b>	Middle
<b>Signal</b>	Duty Cycle: 1.00 (Crest factor: 1.00)

### B. SAR Measurement Results

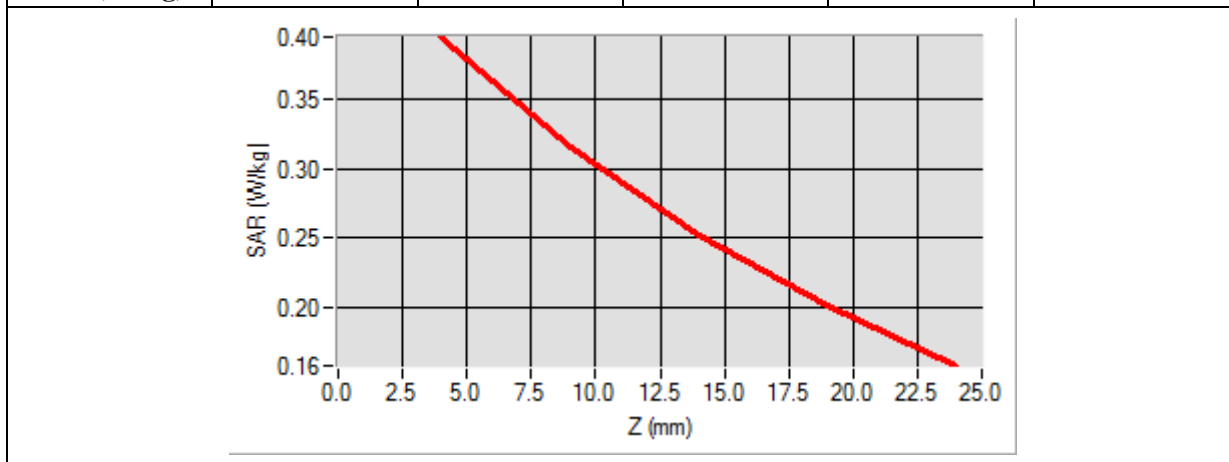
<b>Frequency (MHz)</b>	836.400000
<b>Relative Permittivity (real part)</b>	55.802100
<b>Conductivity (S/m)</b>	0.960000
<b>Power Variation (%)</b>	0.800000
<b>Ambient Temperature</b>	21.1
<b>Liquid Temperature</b>	21.3



Maximum location: X=2.00, Y=9.00

SAR 10g (W/Kg)	0.292704
SAR 1g (W/Kg)	0.381974

Z (mm)	0.00	4.00	9.00	14.00	19.00
SAR (W/Kg)	0.0000	0.3950	0.3149	0.2511	0.2001



<b>3D screen shot</b>	<b>Hot spot position</b>



# MEASUREMENT 27

Type: Phone measurement (Complete)

Date of measurement: 01/02/2014

Measurement duration: 12 minutes 3 seconds

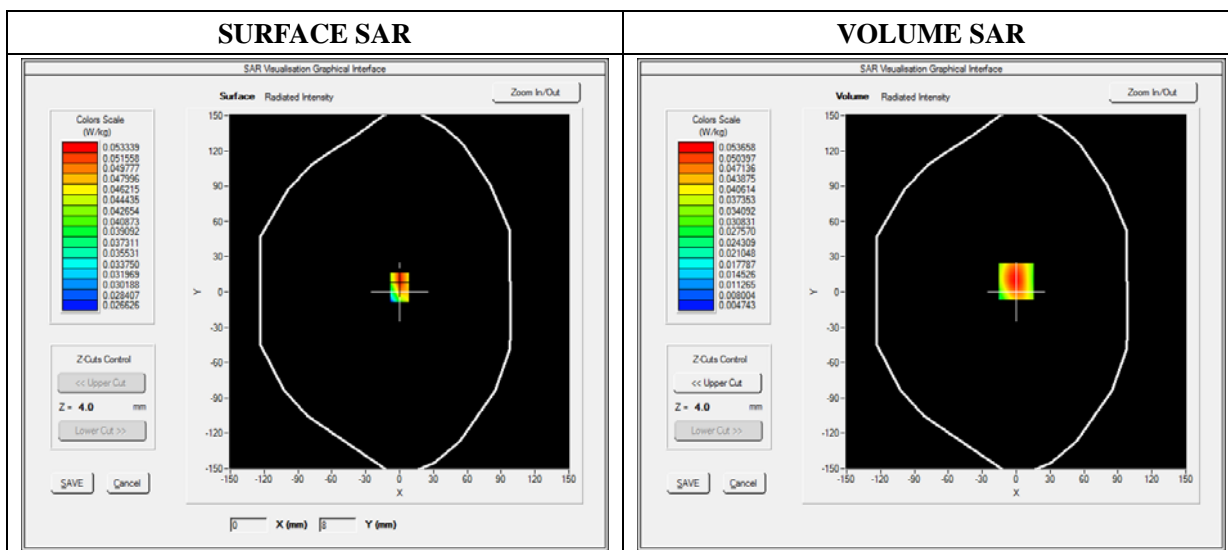
E-field Probe: SSE5 - SN 09/13 EP168; ConvF: 6.50; Calibrated: 03/21/2013

### A. Experimental conditions

<b>Area Scan</b>	sam_direct_droit2_surf8mm.txt
<b>Phantom</b>	Flat Plane
<b>Device Position</b>	Bottom
<b>Band</b>	WCDMA850_RMC
<b>Channels</b>	Middle
<b>Signal</b>	Duty Cycle: 1.00 (Crest factor: 1.00)

### B. SAR Measurement Results

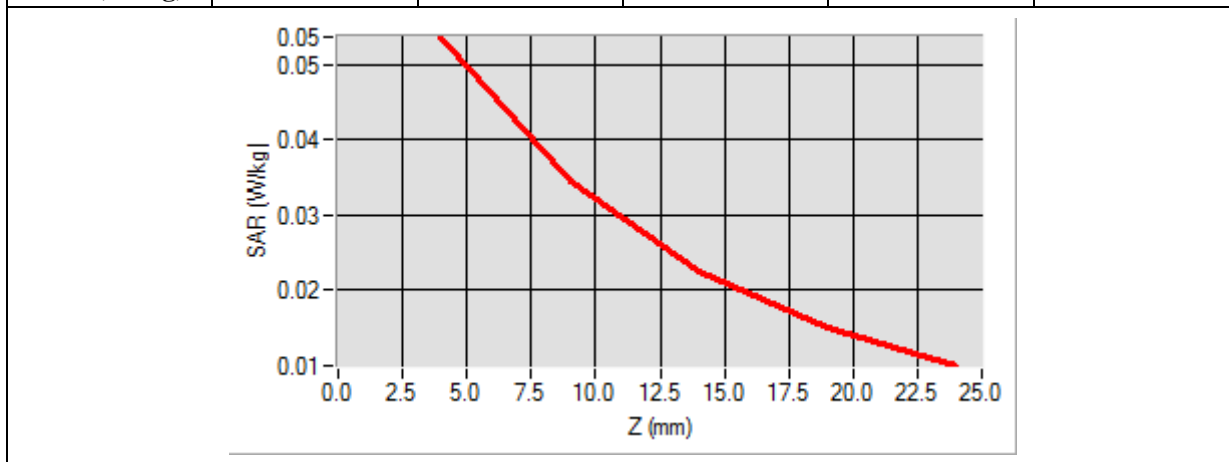
<b>Frequency (MHz)</b>	836.400000
<b>Relative Permittivity (real part)</b>	55.802100
<b>Conductivity (S/m)</b>	0.96000
<b>Power Variation (%)</b>	0.80000
<b>Ambient Temperature</b>	21.1
<b>Liquid Temperature</b>	21.3

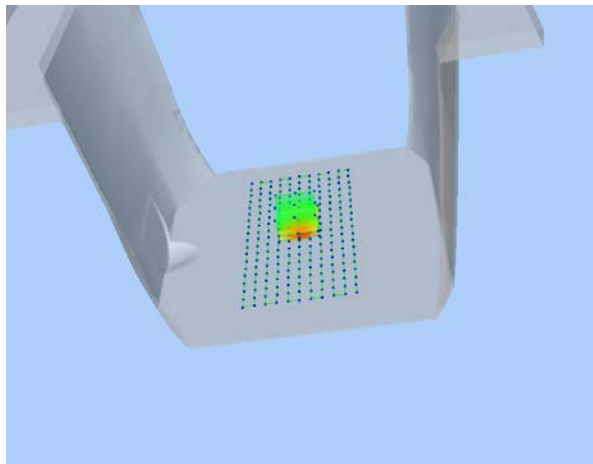



Maximum location: X=0.00, Y=9.00

SAR 10g (W/Kg)	0.031563
SAR 1g (W/Kg)	0.050384

Z (mm)	0.00	4.00	9.00	14.00	19.00
SAR (W/Kg)	0.0000	0.0537	0.0344	0.0224	0.0150



<b>3D screen shot</b>	<b>Hot spot position</b>
	

# MEASUREMENT 28

Type: Phone measurement (Complete)

Date of measurement: 01/02/2014

Measurement duration: 12 minutes 3 seconds

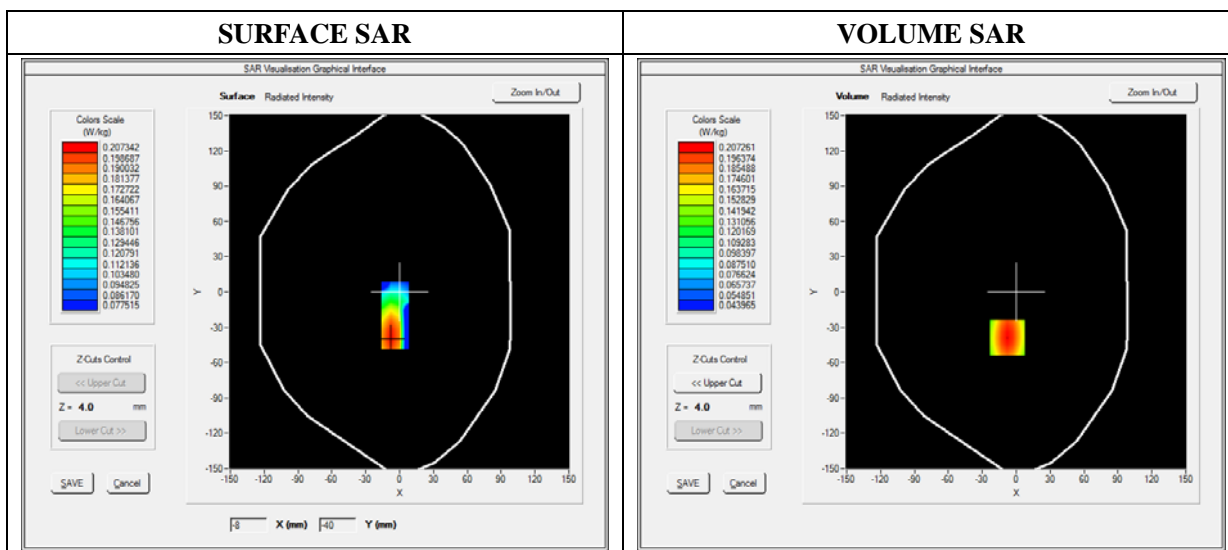
E-field Probe: SSE5 - SN 09/13 EP168; ConvF: 6.50; Calibrated: 03/21/2013

### A. Experimental conditions

<b>Area Scan</b>	sam_direct_droit2_surf8mm.txt
<b>Phantom</b>	Flat Plane
<b>Device Position</b>	Right side
<b>Band</b>	WCDMA850_RMC
<b>Channels</b>	Middle
<b>Signal</b>	Duty Cycle: 1.00 (Crest factor: 1.00)

### B. SAR Measurement Results

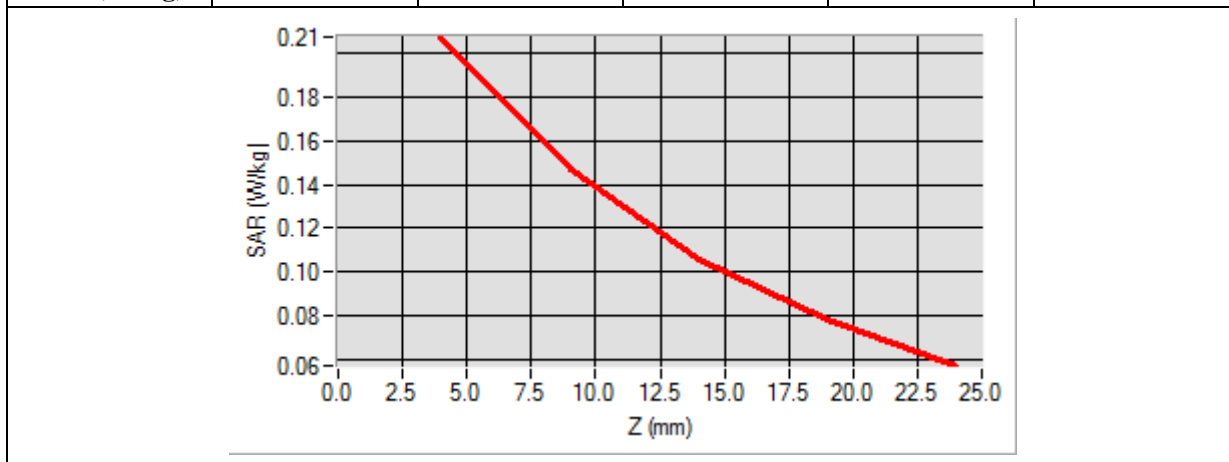
<b>Frequency (MHz)</b>	836.400000
<b>Relative Permittivity (real part)</b>	55.802100
<b>Conductivity (S/m)</b>	0.96000
<b>Power Variation (%)</b>	0.80000
<b>Ambient Temperature</b>	21.1
<b>Liquid Temperature</b>	21.3



Maximum location: X=-8.00, Y=-39.00

SAR 10g (W/Kg)	0.135060
SAR 1g (W/Kg)	0.196857

Z (mm)	0.00	4.00	9.00	14.00	19.00
SAR (W/Kg)	0.0000	0.2073	0.1469	0.1059	0.0781



3D screen shot	Hot spot position

# MEASUREMENT 29

Type: Phone measurement (Complete)

Date of measurement: 01/02/2014

Measurement duration: 12 minutes 3 seconds

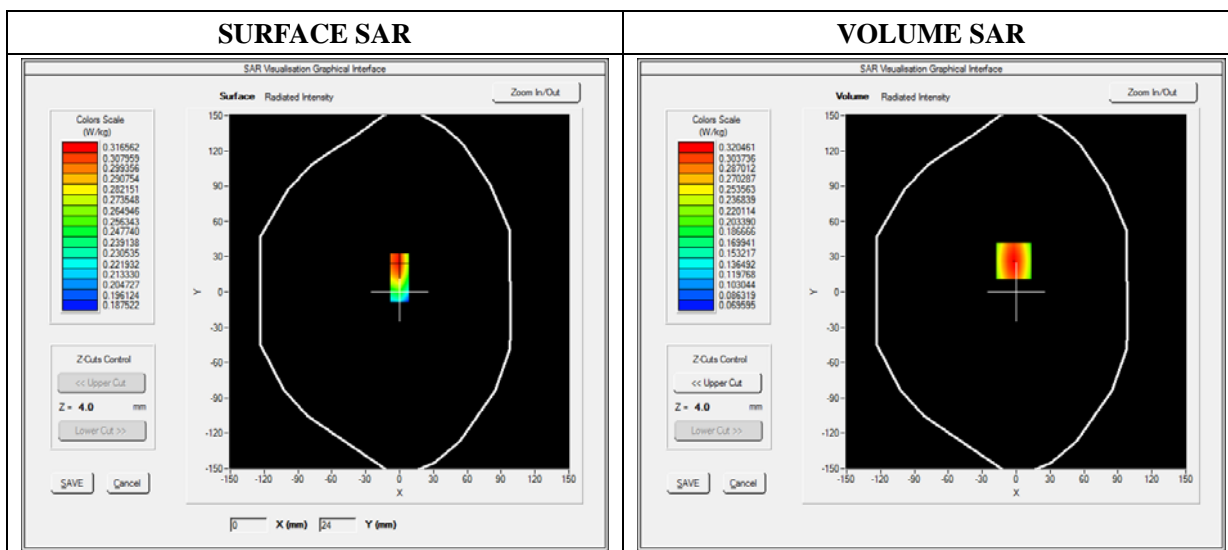
E-field Probe: SSE5 - SN 09/13 EP168; ConvF: 6.50; Calibrated: 03/21/2013

### A. Experimental conditions

<b>Area Scan</b>	sam_direct_droit2_surf8mm.txt
<b>Phantom</b>	Flat Plane
<b>Device Position</b>	Left side
<b>Band</b>	WCDMA850_RMC
<b>Channels</b>	Middle
<b>Signal</b>	Duty Cycle: 1.00 (Crest factor: 1.00)

### B. SAR Measurement Results

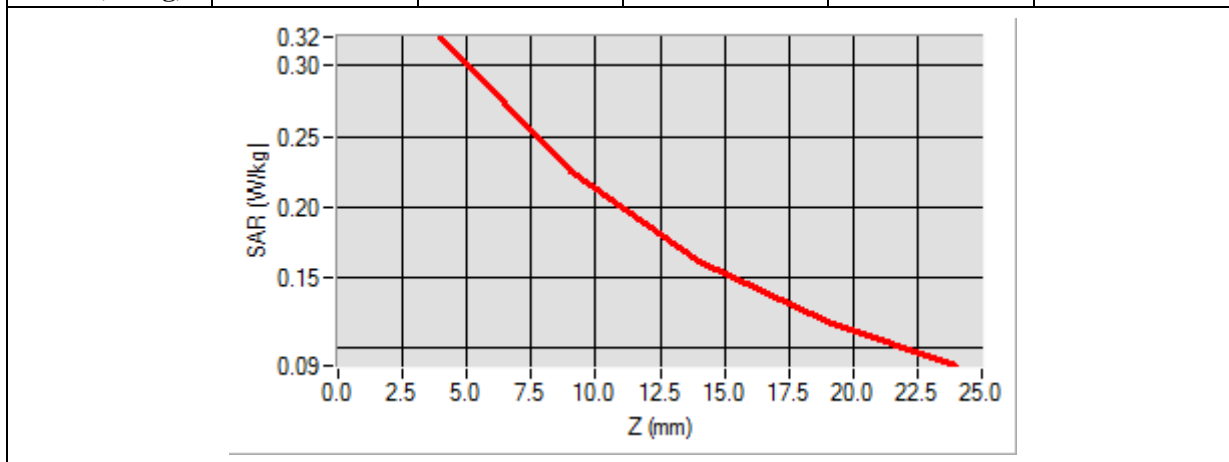
<b>Frequency (MHz)</b>	836.400000
<b>Relative Permittivity (real part)</b>	55.802100
<b>Conductivity (S/m)</b>	0.96000
<b>Power Variation (%)</b>	0.80000
<b>Ambient Temperature</b>	21.1
<b>Liquid Temperature</b>	21.3



Maximum location: X=-2.00, Y=26.00

SAR 10g (W/Kg)	0.207884
SAR 1g (W/Kg)	0.303677

Z (mm)	0.00	4.00	9.00	14.00	19.00
SAR (W/Kg)	0.0000	0.3205	0.2260	0.1622	0.1194



3D screen shot	Hot spot position

# MEASUREMENT 30

Type: Phone measurement (Complete)

Date of measurement: 01/02/2014

Measurement duration: 12 minutes 3 seconds

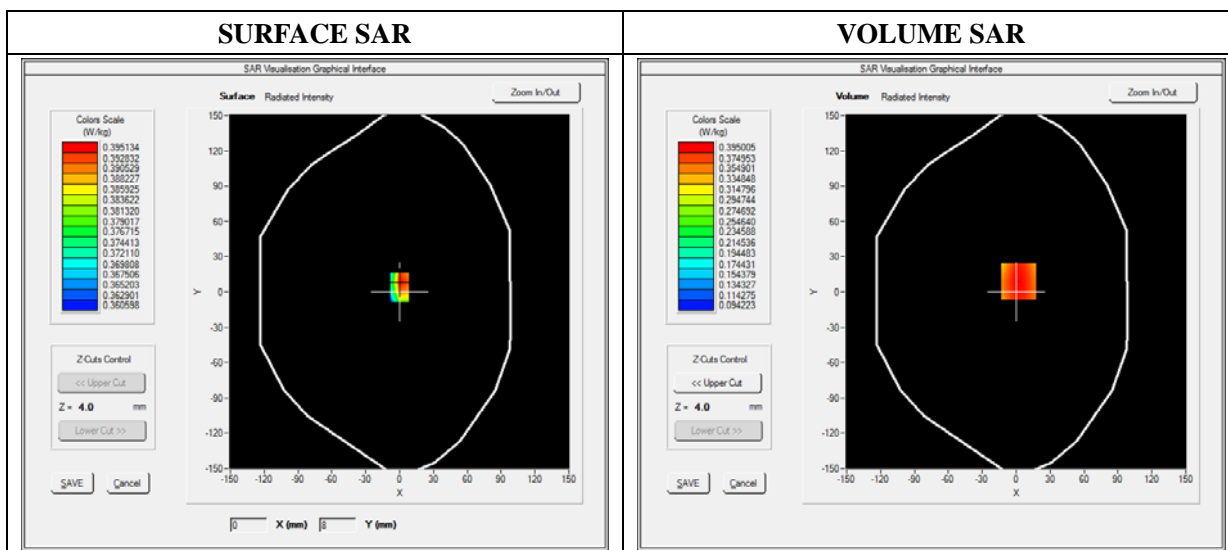
E-field Probe: SSE5 - SN 09/13 EP168; ConvF: 6.50; Calibrated: 03/21/2013

### A. Experimental conditions

<b>Area Scan</b>	sam_direct_droit2_surf8mm.txt
<b>Phantom</b>	Flat Plane
<b>Device Position</b>	Body-worn
<b>Band</b>	WCDMA850_RMC
<b>Channels</b>	Middle
<b>Signal</b>	Duty Cycle: 1.00 (Crest factor: 1.00)

### B. SAR Measurement Results

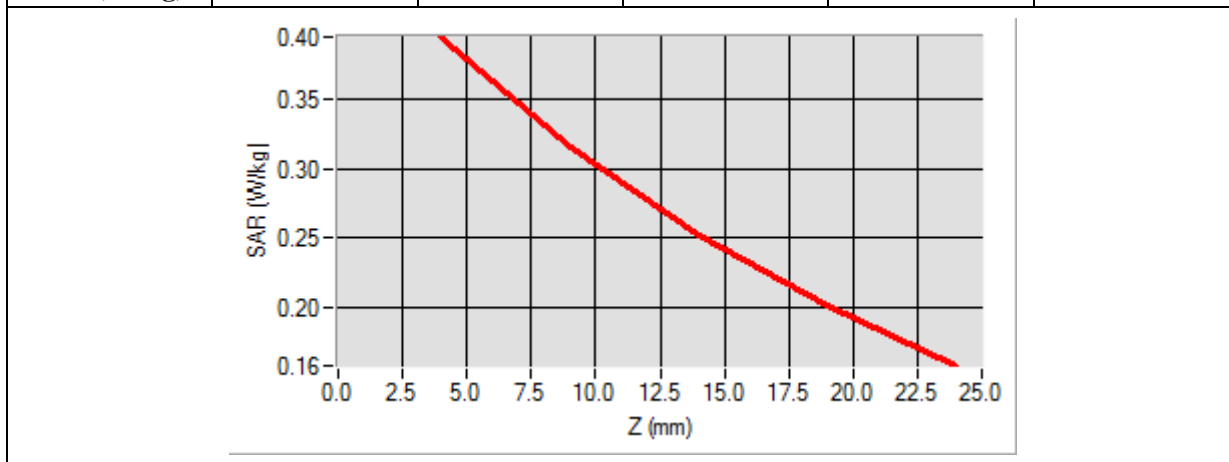
<b>Frequency (MHz)</b>	836.400000
<b>Relative Permittivity (real part)</b>	55.802100
<b>Conductivity (S/m)</b>	0.960000
<b>Power Variation (%)</b>	0.800000
<b>Ambient Temperature</b>	21.1
<b>Liquid Temperature</b>	21.3



Maximum location: X=2.00, Y=9.00

SAR 10g (W/Kg)	0.292704
SAR 1g (W/Kg)	0.381974

Z (mm)	0.00	4.00	9.00	14.00	19.00
SAR (W/Kg)	0.0000	0.3950	0.3149	0.2511	0.2001



3D screen shot	Hot spot position



# MEASUREMENT 31

Type: Phone measurement (Complete)

Date of measurement: 01/02/2014

Measurement duration: 12 minutes 3 seconds

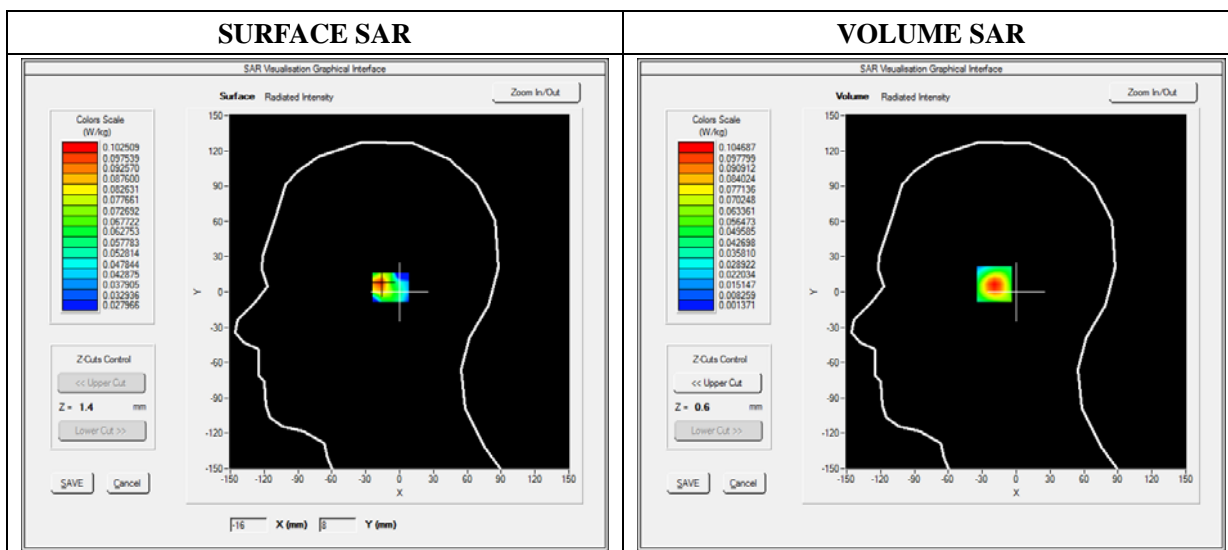
E-field Probe: SSE5 - SN 09/13 EP168; ConvF: 5.51; Calibrated: 2013/03/21

### A. Experimental conditions

<b>Area Scan</b>	sam_direct_droit2_surf8mm.txt
<b>Phantom</b>	Right head
<b>Device Position</b>	Cheek
<b>Band</b>	WiFi_802.11b
<b>Channels</b>	Middle
<b>Signal</b>	Duty Cycle: 1.00 (Crest factor: 1.00)

### B. SAR Measurement Results

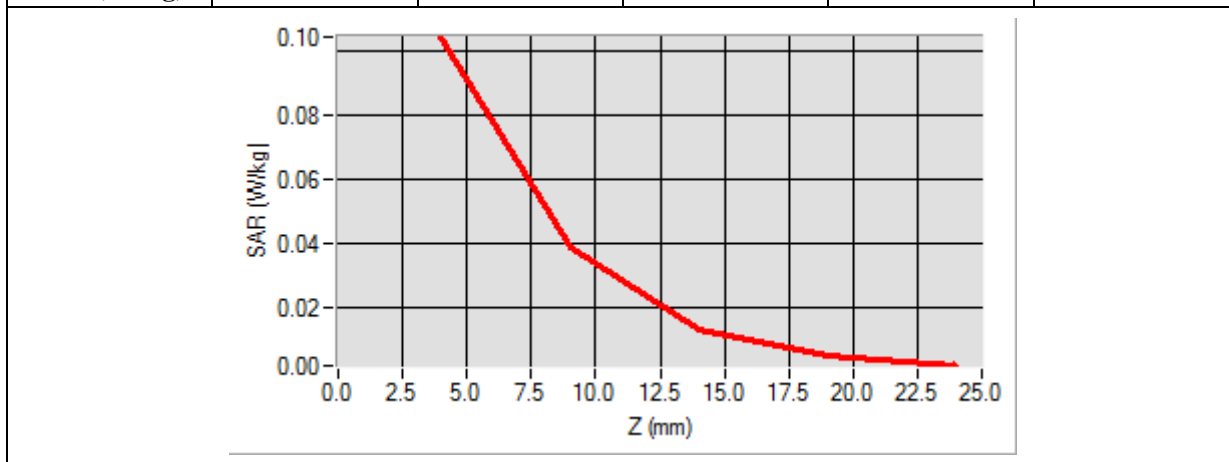
<b>Frequency (MHz)</b>	2442.000000
<b>Relative Permittivity (real part)</b>	38.600000
<b>Conductivity (S/m)</b>	1.760000
<b>Power Variation (%)</b>	0.2412201
<b>Ambient Temperature</b>	21.1
<b>Liquid Temperature</b>	21.2



Maximum location: X=-18.00, Y=7.00

SAR 10g (W/Kg)	0.042287
SAR 1g (W/Kg)	0.096808

Z (mm)	0.00	4.00	9.00	14.00	19.00
SAR (W/Kg)	0.0000	0.1047	0.0389	0.0132	0.0049



<p><b>3D screen shot</b></p>	<p><b>Hot spot position</b></p>

# MEASUREMENT 32

Type: Phone measurement (Complete)

Date of measurement: 01/02/2014

Measurement duration: 12 minutes 3 seconds

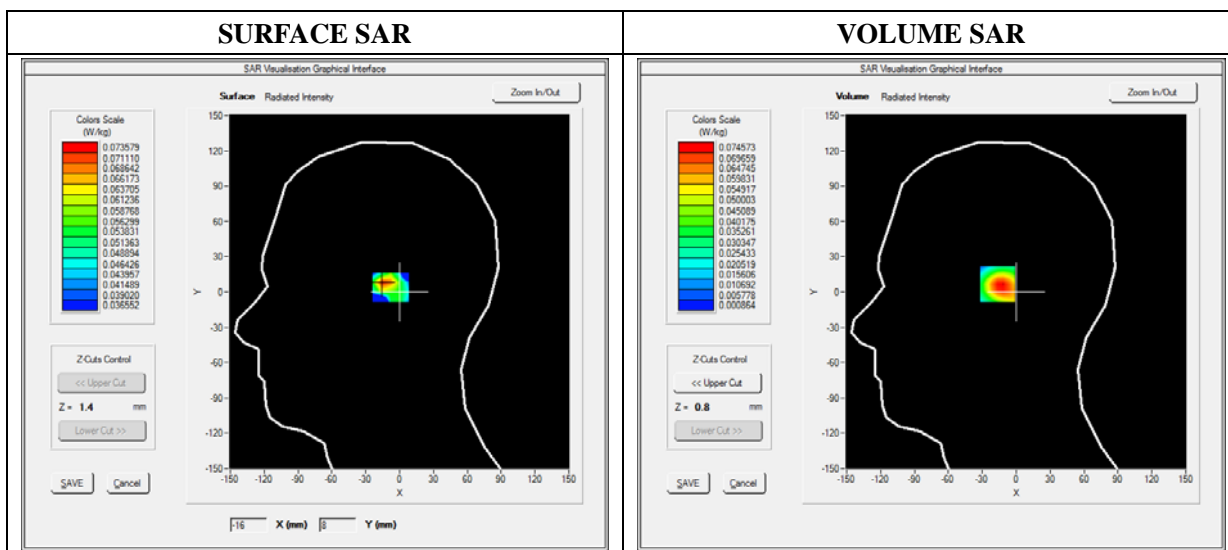
E-field Probe: SSE5 - SN 09/13 EP168; ConvF: 5.51; Calibrated: 2013/03/21

### A. Experimental conditions

<b>Area Scan</b>	sam_direct_droit2_surf8mm.txt
<b>Phantom</b>	Righ head
<b>Device Position</b>	Tilt
<b>Band</b>	WiFi_802.11b
<b>Channels</b>	Middle
<b>Signal</b>	Duty Cycle: 1.00 (Crest factor: 1.00)

### B. SAR Measurement Results

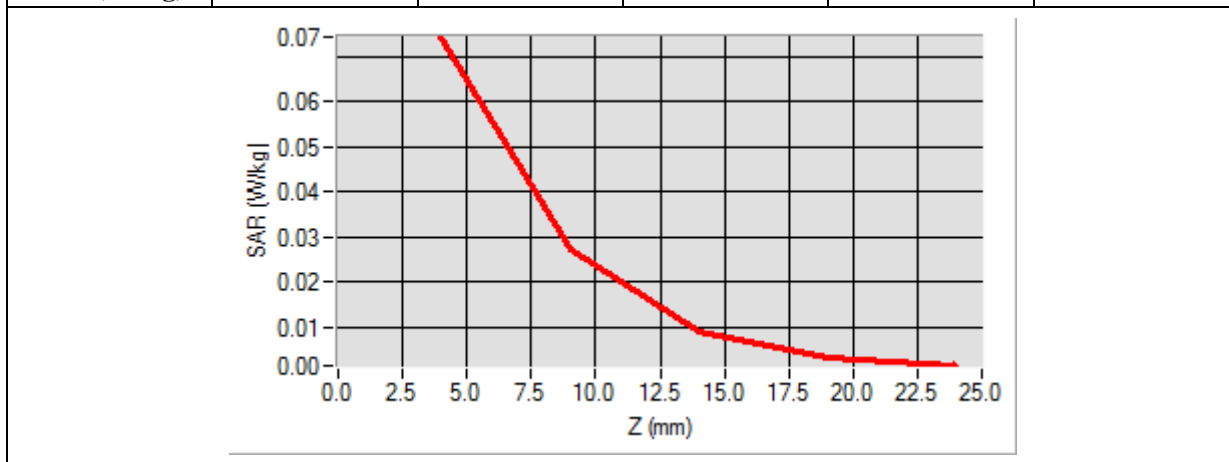
<b>Frequency (MHz)</b>	2442.000000
<b>Relative Permittivity (real part)</b>	38.600000
<b>Conductivity (S/m)</b>	1.760000
<b>Power Variation (%)</b>	0.2412201
<b>Ambient Temperature</b>	21.1
<b>Liquid Temperature</b>	21.2



Maximum location: X=-15.00, Y=7.00

SAR 10g (W/Kg)	0.031914
SAR 1g (W/Kg)	0.071453

Z (mm)	0.00	4.00	9.00	14.00	19.00
SAR (W/Kg)	0.0000	0.0743	0.0272	0.0091	0.0034



<b>3D screen shot</b>	<b>Hot spot position</b>

# MEASUREMENT 33

Type: Phone measurement (Complete)

Date of measurement: 01/02/2014

Measurement duration: 12 minutes 3 seconds

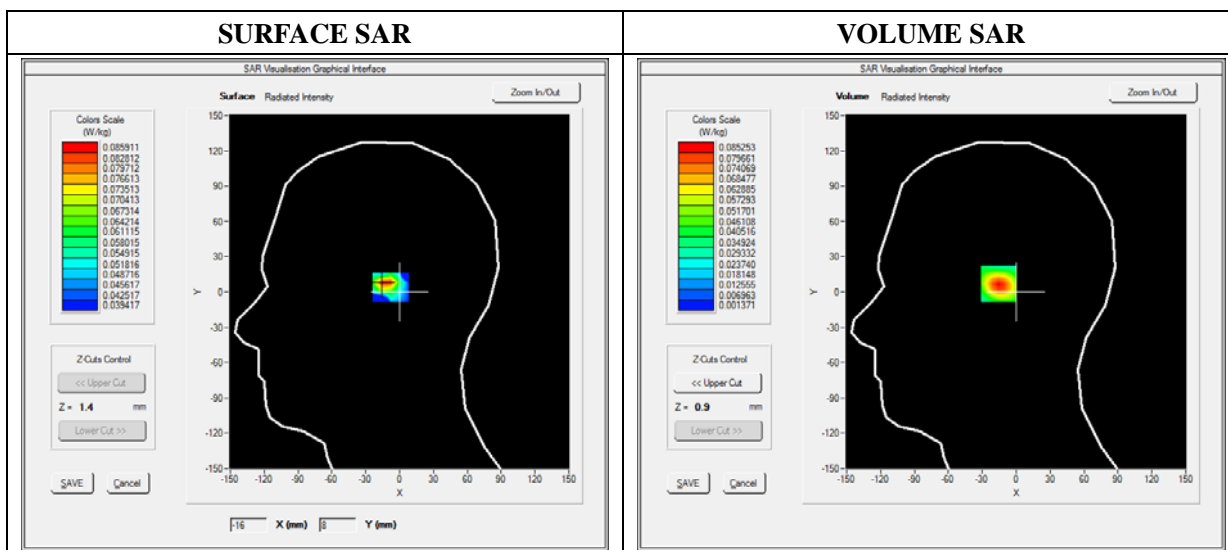
E-field Probe: SSE5 - SN 09/13 EP168; ConvF: 5.51; Calibrated: 2013/03/21

### A. Experimental conditions

<b>Area Scan</b>	sam_direct_droit2_surf8mm.txt
<b>Phantom</b>	Left head
<b>Device Position</b>	Cheek
<b>Band</b>	WiFi_802.11b
<b>Channels</b>	Middle
<b>Signal</b>	Duty Cycle: 1.00 (Crest factor: 1.00)

### B. SAR Measurement Results

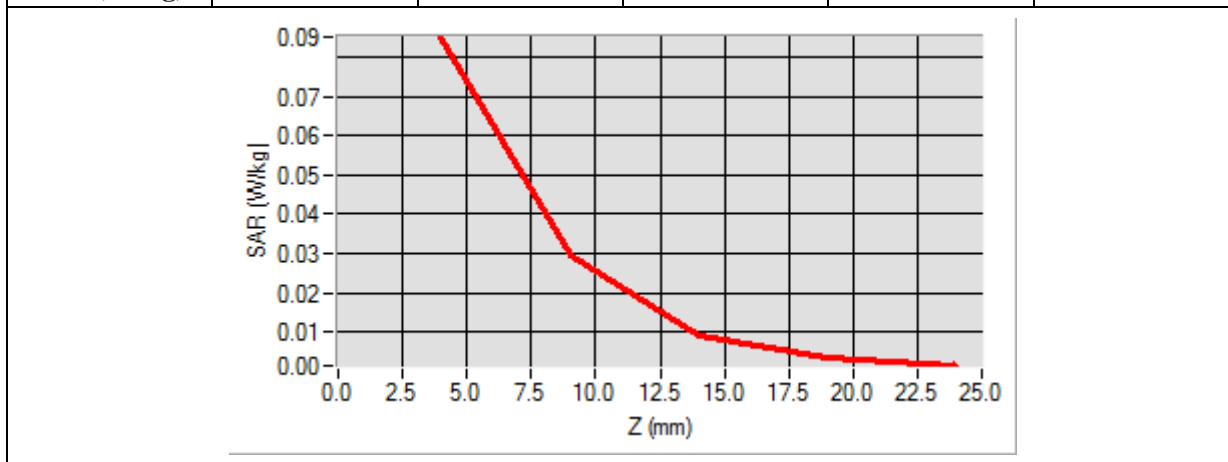
<b>Frequency (MHz)</b>	2442.000000
<b>Relative Permittivity (real part)</b>	38.600000
<b>Conductivity (S/m)</b>	1.760000
<b>Power Variation (%)</b>	0.2412201
<b>Ambient Temperature</b>	21.1
<b>Liquid Temperature</b>	21.2



Maximum location: X=-14.00, Y=7.00

SAR 10g (W/Kg)	0.034923
SAR 1g (W/Kg)	0.079819

Z (mm)	0.00	4.00	9.00	14.00	19.00
SAR (W/Kg)	0.0000	0.0853	0.0296	0.0092	0.0033



<p><b>3D screen shot</b></p>	<p><b>Hot spot position</b></p>

# MEASUREMENT 34

Type: Phone measurement (Complete)

Date of measurement: 01/02/2014

Measurement duration: 12 minutes 3 seconds

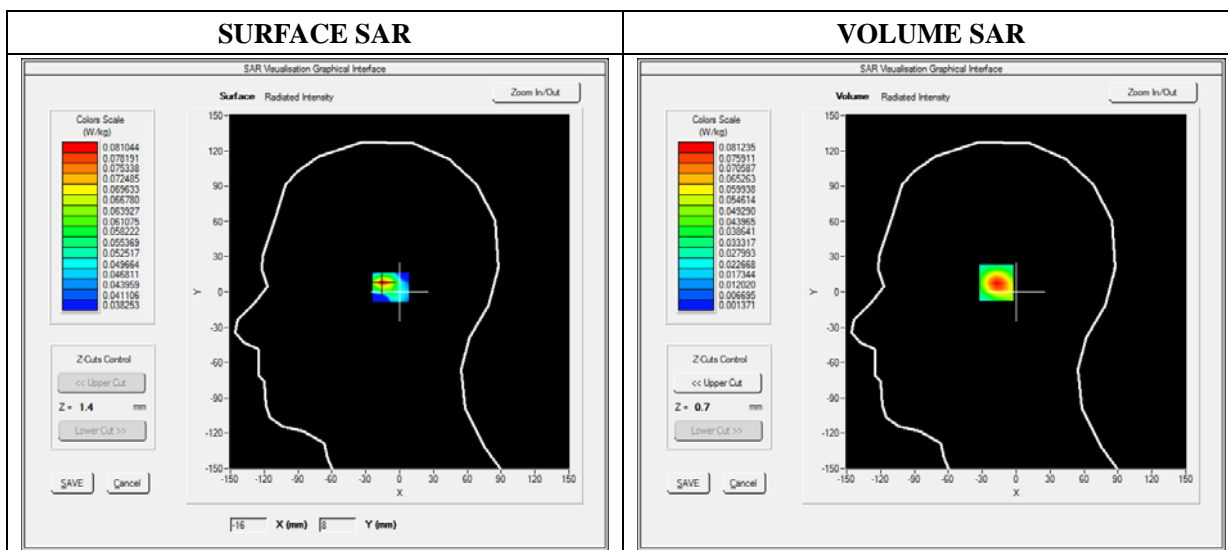
E-field Probe: SSE5 - SN 09/13 EP168; ConvF: 5.51; Calibrated: 2013/03/21

### A. Experimental conditions

<b>Area Scan</b>	sam_direct_droit2_surf8mm.txt
<b>Phantom</b>	Left head
<b>Device Position</b>	Tilt
<b>Band</b>	WiFi_802.11b
<b>Channels</b>	Middle
<b>Signal</b>	Duty Cycle: 1.00 (Crest factor: 1.00)

### B. SAR Measurement Results

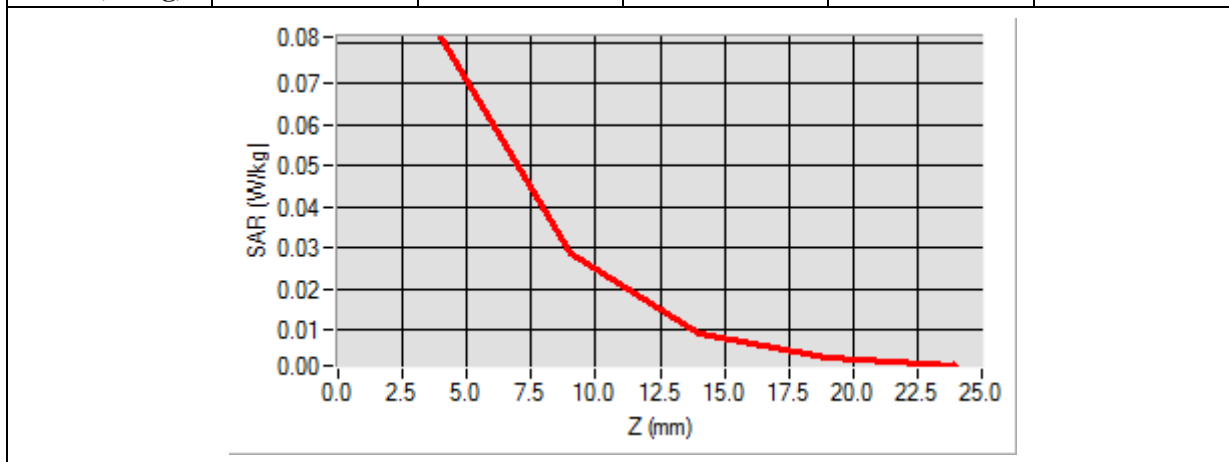
<b>Frequency (MHz)</b>	2442.000000
<b>Relative Permittivity (real part)</b>	38.600000
<b>Conductivity (S/m)</b>	1.760000
<b>Power Variation (%)</b>	0.2412201
<b>Ambient Temperature</b>	21.1
<b>Liquid Temperature</b>	21.2



Maximum location: X=-16.00, Y=8.00

SAR 10g (W/Kg)	0.032815
SAR 1g (W/Kg)	0.075484

Z (mm)	0.00	4.00	9.00	14.00	19.00
SAR (W/Kg)	0.0000	0.0812	0.0284	0.0089	0.0032



<p><b>3D screen shot</b></p>	<p><b>Hot spot position</b></p>



# MEASUREMENT 35

Type: Phone measurement (Complete)

Date of measurement: 01/02/2014

Measurement duration: 12 minutes 3 seconds

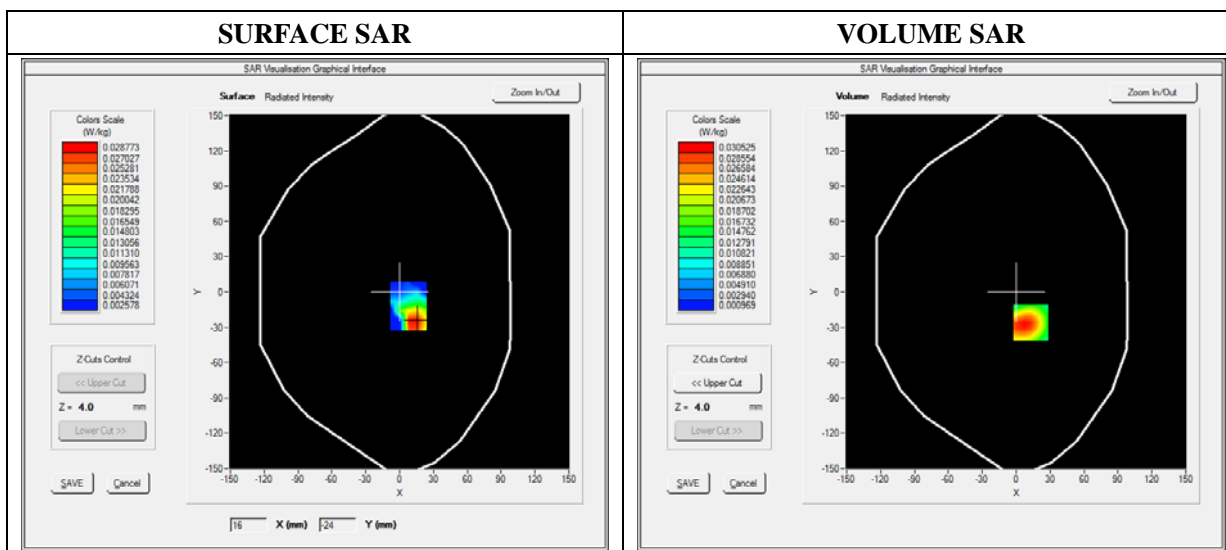
E-field Probe: SSE5 - SN 09/13 EP168; ConvF: 5.70; Calibrated: 2013/03/21

### A. Experimental conditions

<b>Area Scan</b>	sam_direct_droit2_surf8mm.txt
<b>Phantom</b>	Flat Plane
<b>Device Position</b>	Front
<b>Band</b>	WiFi_802.11b
<b>Channels</b>	Middle
<b>Signal</b>	Duty Cycle: 1.00 (Crest factor: 1.00)

### B. SAR Measurement Results

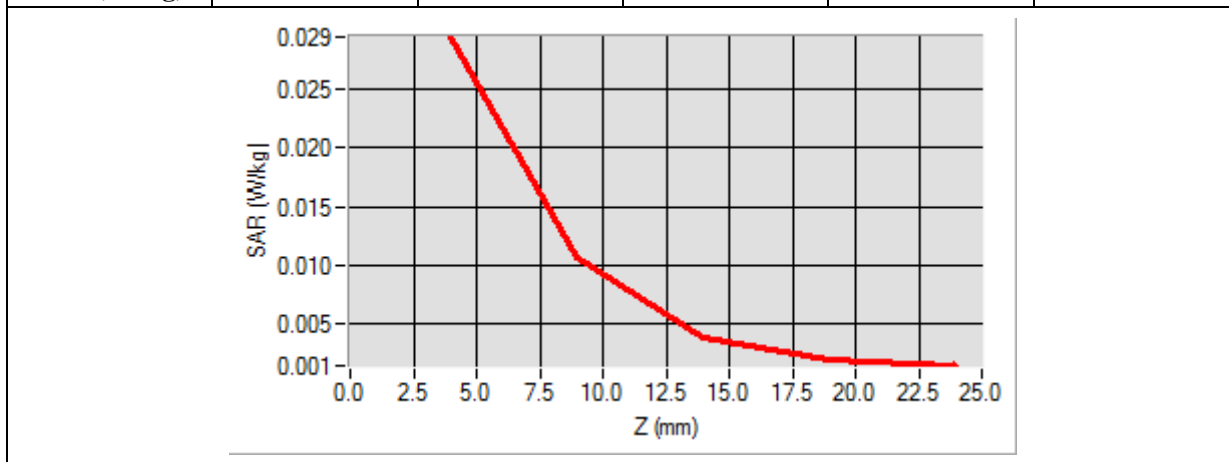
<b>Frequency (MHz)</b>	2442.000000
<b>Relative Permittivity (real part)</b>	52.300000
<b>Conductivity (S/m)</b>	2.000000
<b>Power Variation (%)</b>	0.231210
<b>Ambient Temperature</b>	21.1
<b>Liquid Temperature</b>	21.2



Maximum location: X=13.00, Y=-26.00

SAR 10g (W/Kg)	0.013854
SAR 1g (W/Kg)	0.029408

Z (mm)	0.00	4.00	9.00	14.00	19.00
SAR (W/Kg)	0.0000	0.0295	0.0106	0.0038	0.0019



<p><b>3D screen shot</b></p>	<p><b>Hot spot position</b></p>

# MEASUREMENT 36

Type: Phone measurement (Complete)

Date of measurement: 01/02/2014

Measurement duration: 12 minutes 3 seconds

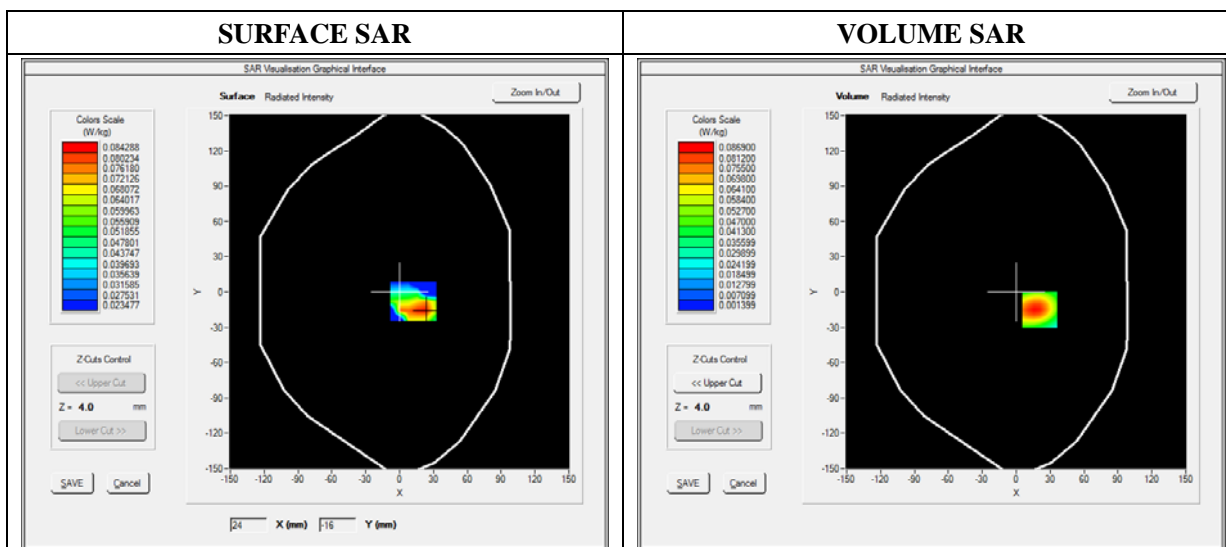
E-field Probe: SSE5 - SN 09/13 EP168; ConvF: 5.70; Calibrated: 2013/03/21

### A. Experimental conditions

<b>Area Scan</b>	sam_direct_droit2_surf8mm.txt
<b>Phantom</b>	Flat Plane
<b>Device Position</b>	Back
<b>Band</b>	WiFi_802.11b
<b>Channels</b>	Middle
<b>Signal</b>	Duty Cycle: 1.00 (Crest factor: 1.00)

### B. SAR Measurement Results

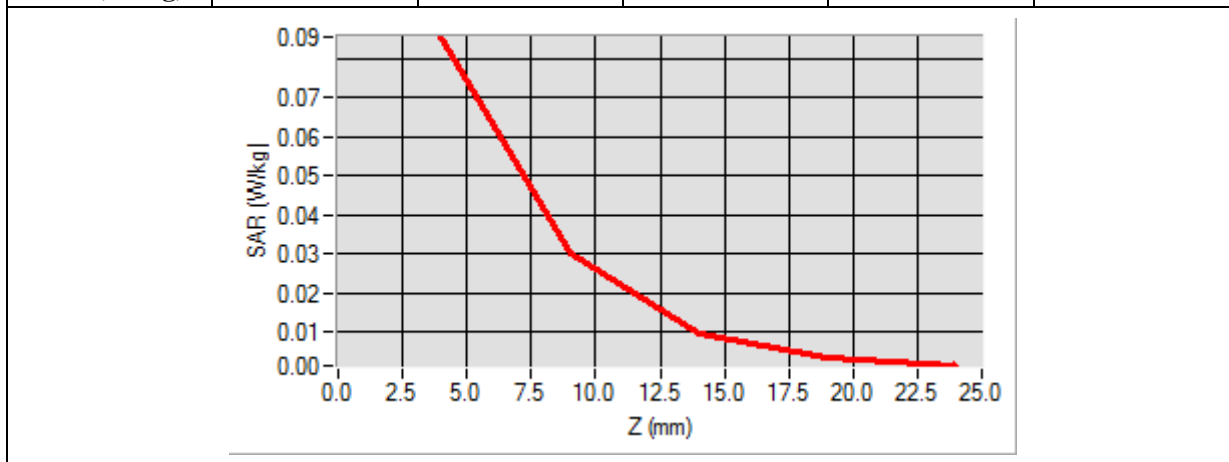
<b>Frequency (MHz)</b>	2442.000000
<b>Relative Permittivity (real part)</b>	52.300000
<b>Conductivity (S/m)</b>	2.000000
<b>Power Variation (%)</b>	0.231210
<b>Ambient Temperature</b>	21.1
<b>Liquid Temperature</b>	21.2



Maximum location: X=21.00, Y=-15.00

SAR 10g (W/Kg)	0.037678
SAR 1g (W/Kg)	0.082678

Z (mm)	0.00	4.00	9.00	14.00	19.00
SAR (W/Kg)	0.0000	0.0854	0.0300	0.0094	0.0034



<p><b>3D screen shot</b></p>	<p><b>Hot spot position</b></p>

# MEASUREMENT 37

Type: Phone measurement (Complete)

Date of measurement: 01/02/2014

Measurement duration: 12 minutes 3 seconds

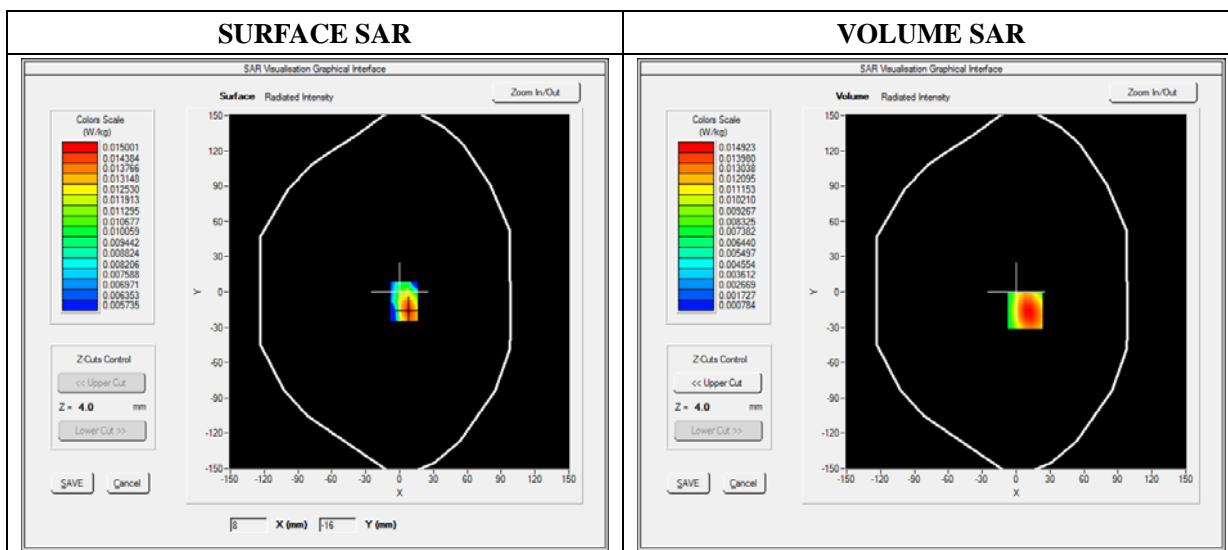
E-field Probe: SSE5 - SN 09/13 EP168; ConvF: 5.70; Calibrated: 2013/03/21

### A. Experimental conditions

<b>Area Scan</b>	sam_direct_droit2_surf8mm.txt
<b>Phantom</b>	Flat Plane
<b>Device Position</b>	Right Side
<b>Band</b>	WiFi_802.11b
<b>Channels</b>	Middle
<b>Signal</b>	Duty Cycle: 1.00 (Crest factor: 1.00)

### B. SAR Measurement Results

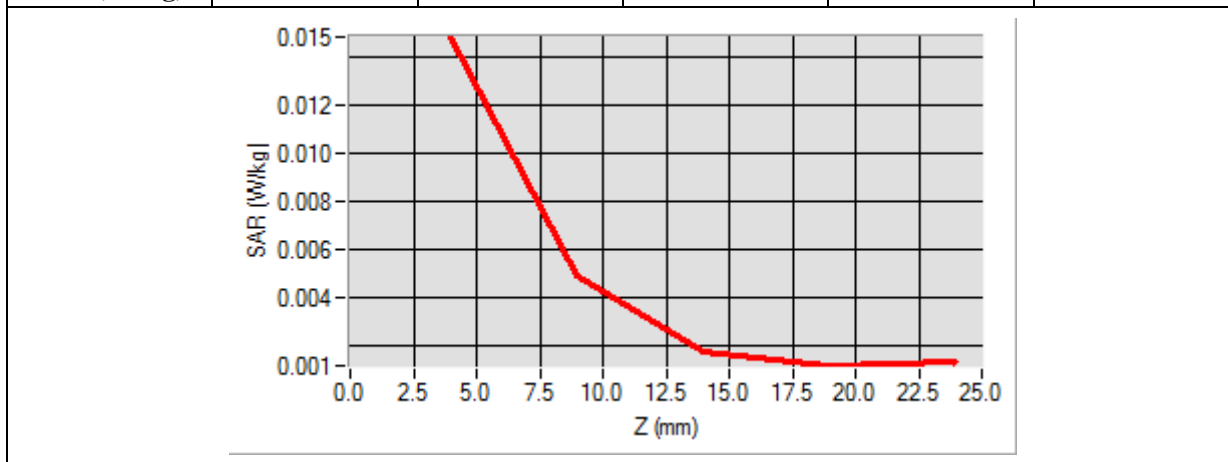
<b>Frequency (MHz)</b>	2442.000000
<b>Relative Permittivity (real part)</b>	52.300000
<b>Conductivity (S/m)</b>	2.000000
<b>Power Variation (%)</b>	0.231210
<b>Ambient Temperature</b>	21.1
<b>Liquid Temperature</b>	21.2



Maximum location: X=8.00, Y=-16.00

SAR 10g (W/Kg)	0.007123
SAR 1g (W/Kg)	0.014803

Z (mm)	0.00	4.00	9.00	14.00	19.00
SAR (W/Kg)	0.0000	0.0148	0.0049	0.0018	0.0012



<p><b>3D screen shot</b></p>	<p><b>Hot spot position</b></p>

# MEASUREMENT 38

Type: Phone measurement (Complete)

Date of measurement: 01/02/2014

Measurement duration: 12 minutes 3 seconds

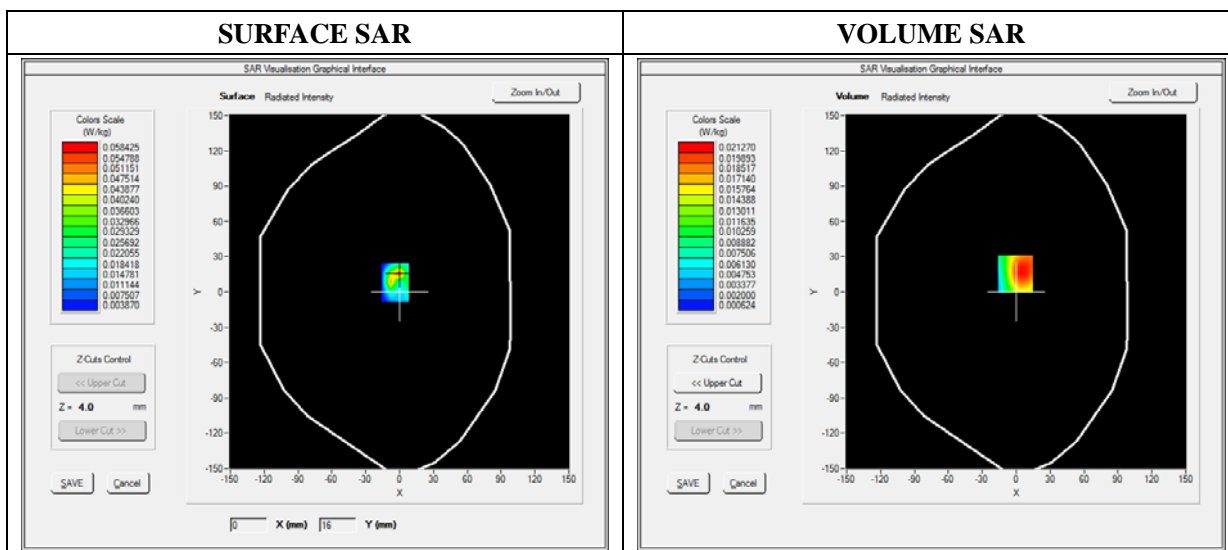
E-field Probe: SSE5 - SN 09/13 EP168; ConvF: 5.70; Calibrated: 2013/03/21

### A. Experimental conditions

<b>Area Scan</b>	sam_direct_droit2_surf8mm.txt
<b>Phantom</b>	Flat Plane
<b>Device Position</b>	Left Side
<b>Band</b>	WiFi_802.11b
<b>Channels</b>	Middle
<b>Signal</b>	Duty Cycle: 1.00 (Crest factor: 1.00)

### B. SAR Measurement Results

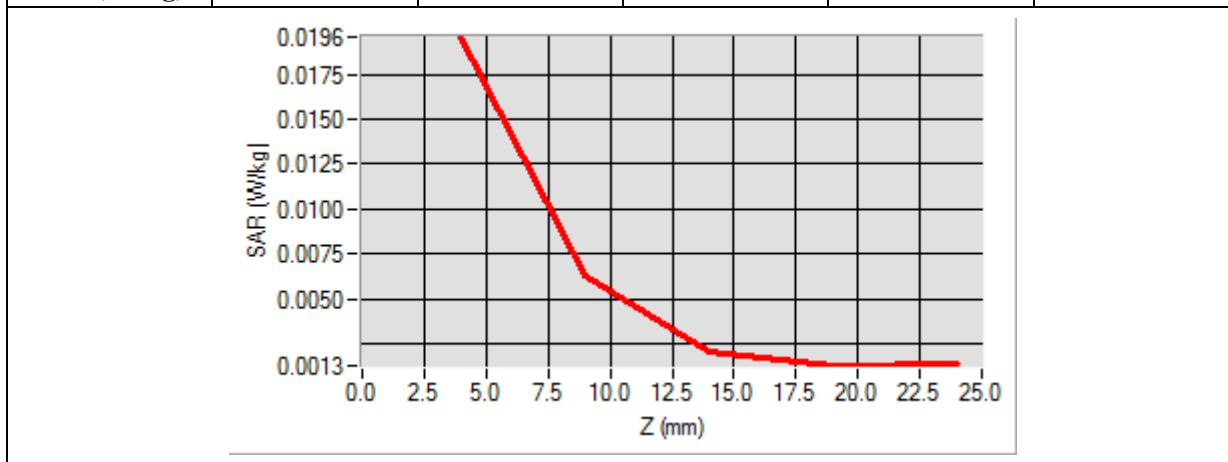
<b>Frequency (MHz)</b>	2442.000000
<b>Relative Permittivity (real part)</b>	52.300000
<b>Conductivity (S/m)</b>	2.000000
<b>Power Variation (%)</b>	0.231210
<b>Ambient Temperature</b>	21.1
<b>Liquid Temperature</b>	21.2



Maximum location: X=-1.00, Y=16.00

SAR 10g (W/Kg)	0.009771
SAR 1g (W/Kg)	0.020860

Z (mm)	0.00	4.00	9.00	14.00	19.00
SAR (W/Kg)	0.0000	0.0196	0.0063	0.0021	0.0013



<p><b>3D screen shot</b></p>	<p><b>Hot spot position</b></p>
<p>A 3D perspective view of a grey, L-shaped device. A grid of small blue dots is overlaid on the flat surface of the device. A localized area of the grid is highlighted with a color gradient from green to red, indicating the hot spot position.</p>	<p>A 2D heatmap showing a localized area of high intensity (red) surrounded by lower intensity (yellow and green) on a white background. The shape of the hot spot is roughly rectangular with rounded corners.</p>



# MEASUREMENT 39

Type: Phone measurement (Complete)

Date of measurement: 01/02/2014

Measurement duration: 12 minutes 3 seconds

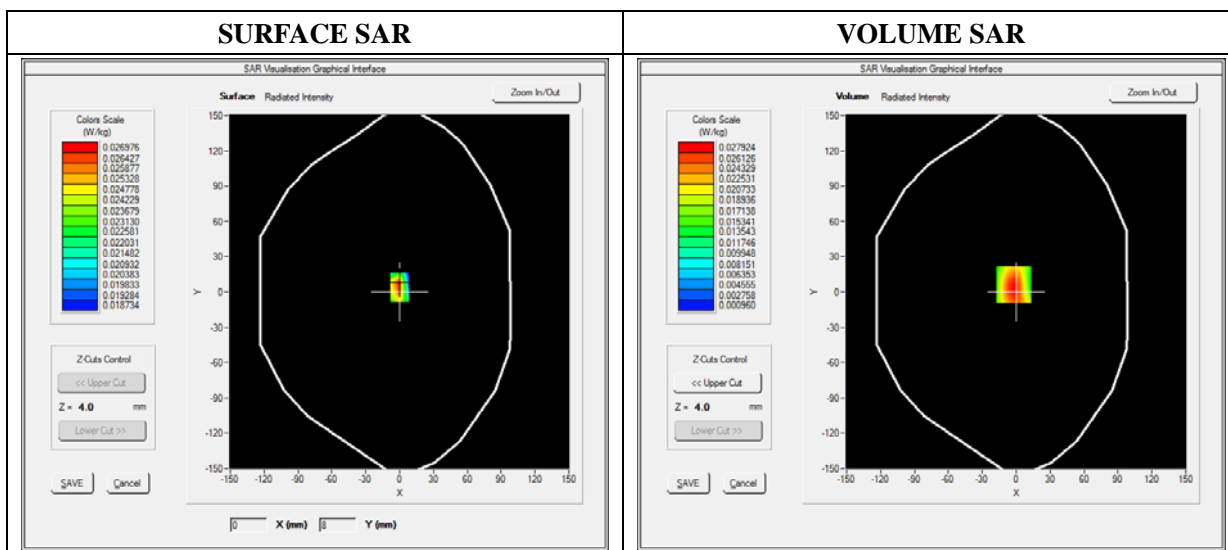
E-field Probe: SSE5 - SN 09/13 EP168; ConvF: 5.70; Calibrated: 2013/03/21

### A. Experimental conditions

<b>Area Scan</b>	sam_direct_droit2_surf8mm.txt
<b>Phantom</b>	Flat Plane
<b>Device Position</b>	Top Side
<b>Band</b>	WiFi_802.11b
<b>Channels</b>	Middle
<b>Signal</b>	Duty Cycle: 1.00 (Crest factor: 1.00)

### B. SAR Measurement Results

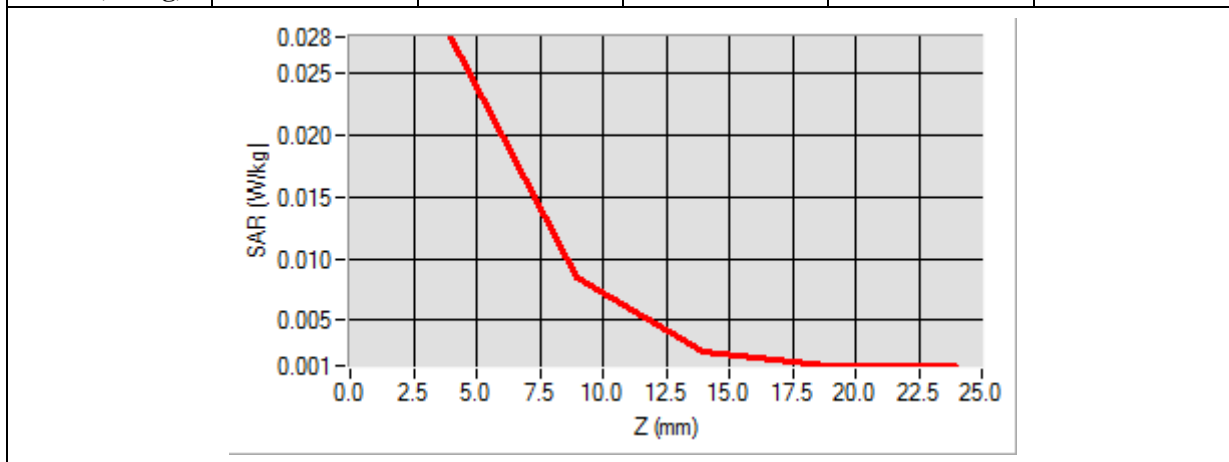
<b>Frequency (MHz)</b>	2442.000000
<b>Relative Permittivity (real part)</b>	52.300000
<b>Conductivity (S/m)</b>	2.000000
<b>Power Variation (%)</b>	0.231210
<b>Ambient Temperature</b>	21.1
<b>Liquid Temperature</b>	21.2



Maximum location: X=-2.00, Y=6.00

SAR 10g (W/Kg)	0.012549
SAR 1g (W/Kg)	0.027194

Z (mm)	0.00	4.00	9.00	14.00	19.00
SAR (W/Kg)	0.0000	0.0279	0.0085	0.0025	0.0014



<b>3D screen shot</b>	<b>Hot spot position</b>
<p>A 3D perspective view of a grey device. A grid of small blue dots is overlaid on the top surface. A small, multi-colored (green, yellow, red) area is highlighted on the grid, representing the hot spot location.</p>	<p>A vertical rectangular color gradient bar, transitioning from dark red at the top to orange at the bottom, representing the intensity profile of the hot spot.</p>

# MEASUREMENT 40

Type: Phone measurement (Complete)

Date of measurement: 01/02/2014

Measurement duration: 12 minutes 3 seconds

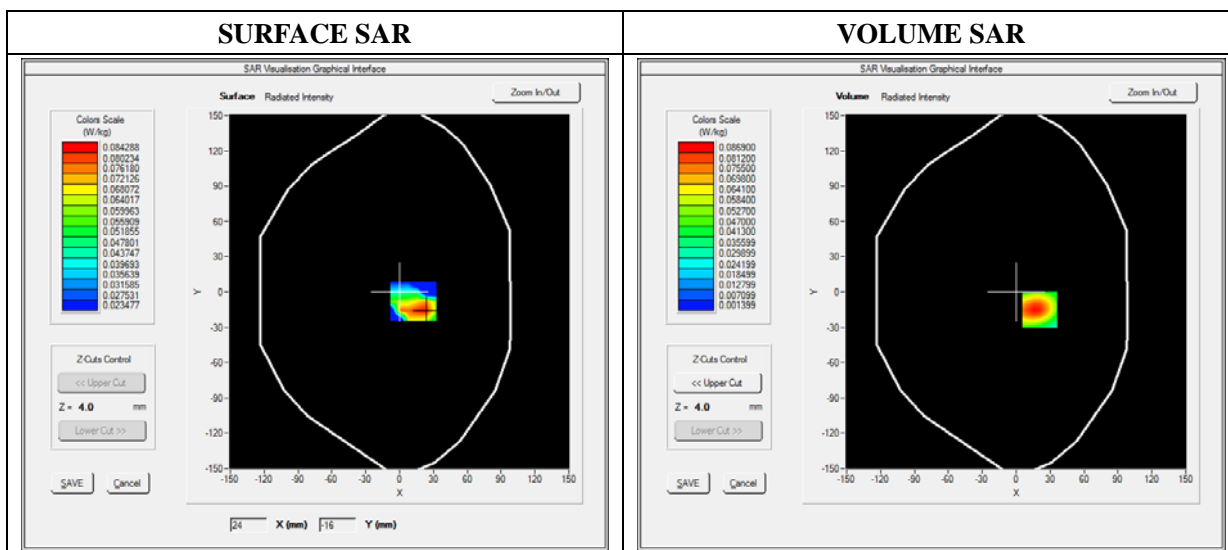
E-field Probe: SSE5 - SN 09/13 EP168; ConvF: 5.70; Calibrated: 2013/03/21

### A. Experimental conditions

<b>Area Scan</b>	sam_direct_droit2_surf8mm.txt
<b>Phantom</b>	Flat Plane
<b>Device Position</b>	Back-worn
<b>Band</b>	WiFi_802.11b
<b>Channels</b>	Middle
<b>Signal</b>	Duty Cycle: 1.00 (Crest factor: 1.00)

### B. SAR Measurement Results

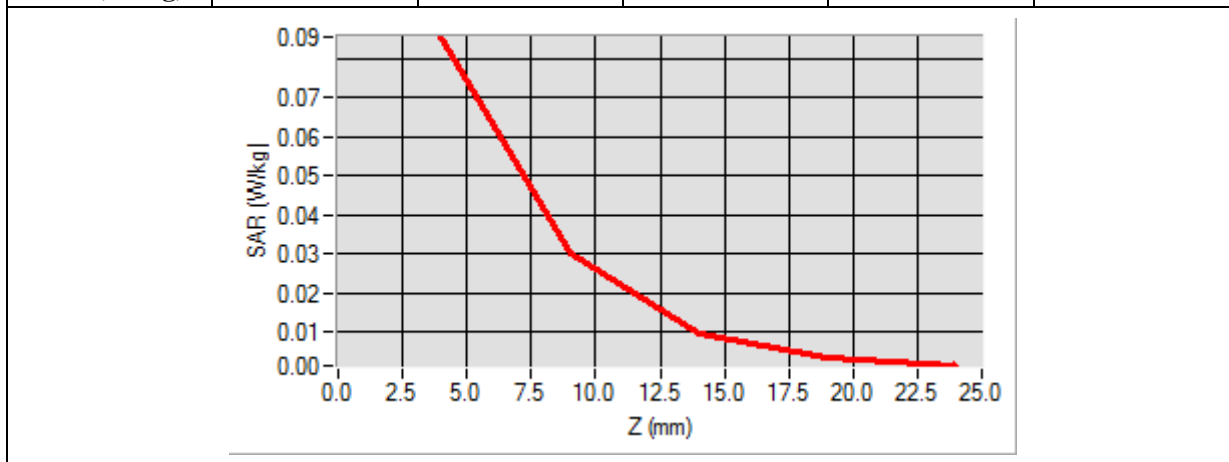
<b>Frequency (MHz)</b>	2442.000000
<b>Relative Permittivity (real part)</b>	52.300000
<b>Conductivity (S/m)</b>	2.000000
<b>Power Variation (%)</b>	0.231210
<b>Ambient Temperature</b>	21.1
<b>Liquid Temperature</b>	21.2



Maximum location: X=21.00, Y=-15.00

SAR 10g (W/Kg)	0.038941
SAR 1g (W/Kg)	0.086322

Z (mm)	0.00	4.00	9.00	14.00	19.00
SAR (W/Kg)	0.0000	0.0895	0.0346	0.0123	0.0046



3D screen shot	Hot spot position

### Annex C. EUT Photos

---

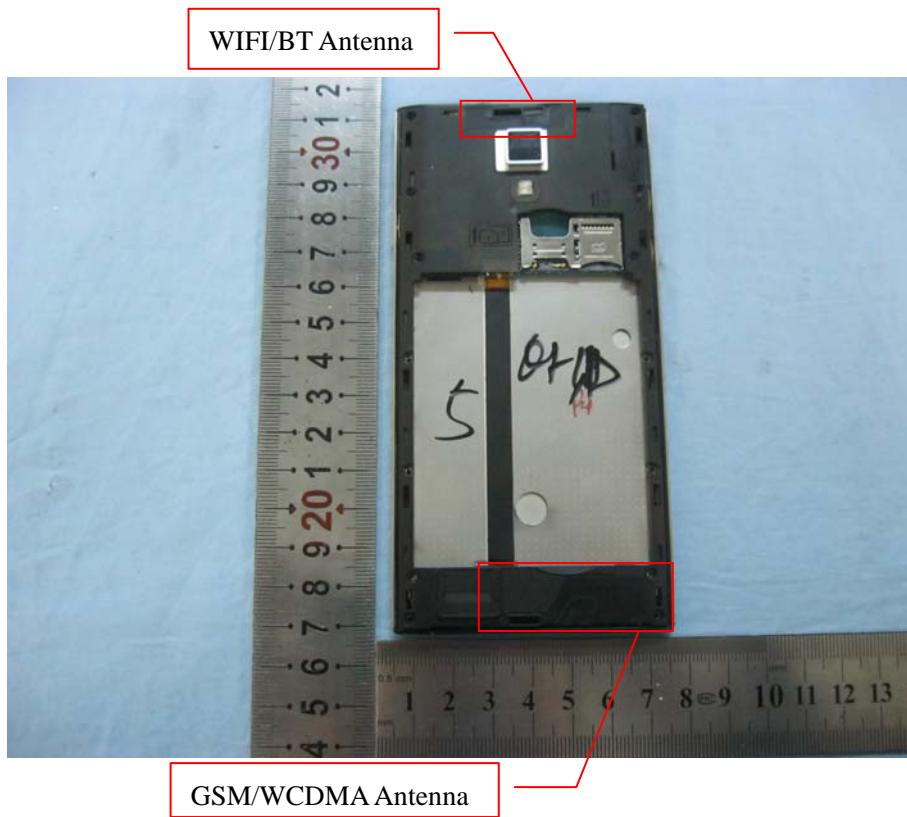
#### EUT View\_Front



#### EUT View\_Back



**Antenna View**

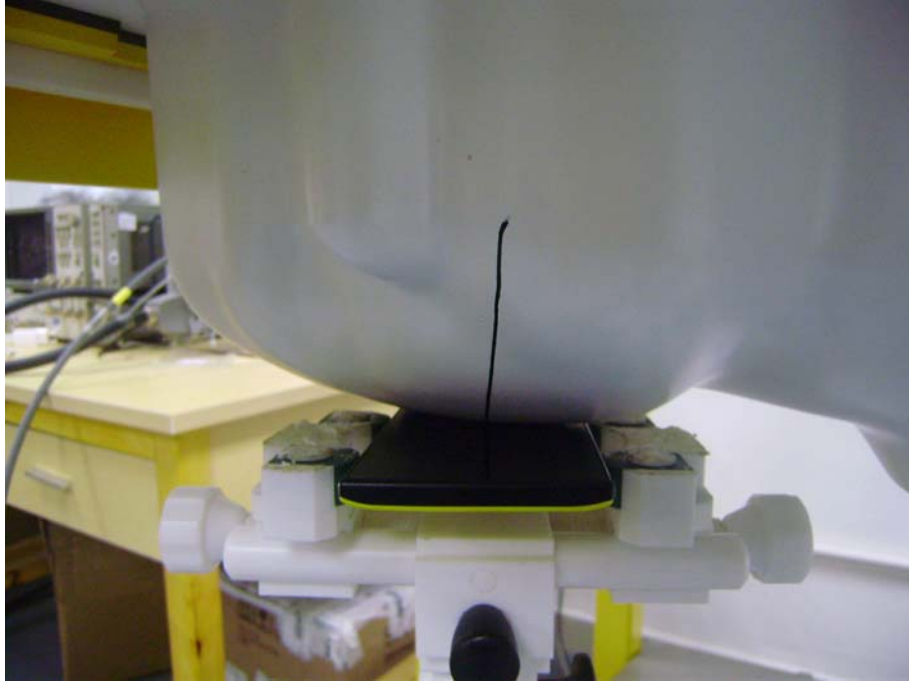


## Annex D. Test Setup Photos

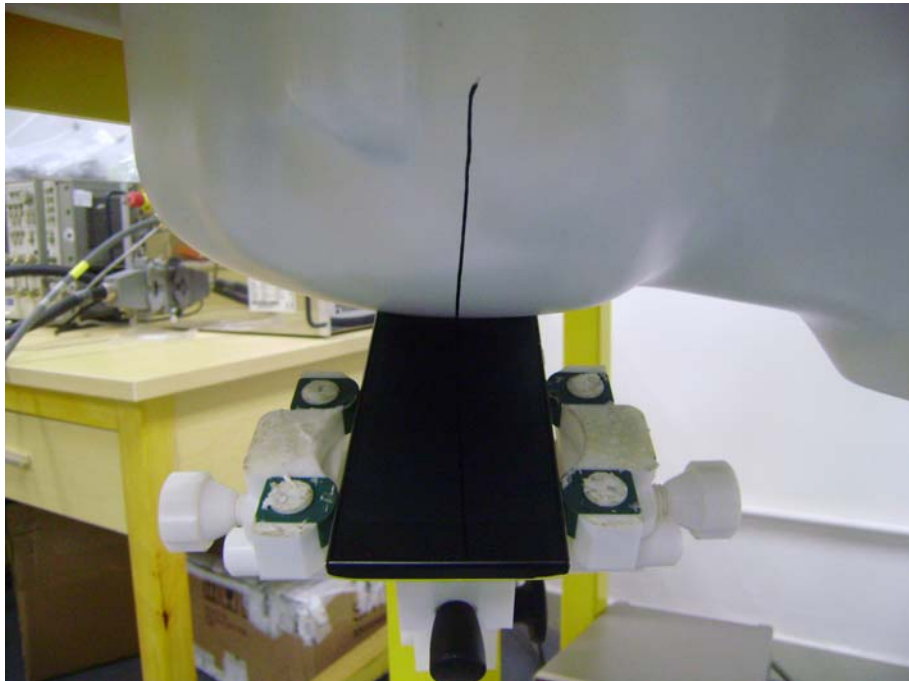
---

### Test View 1 (Right Head)

**Cheek**

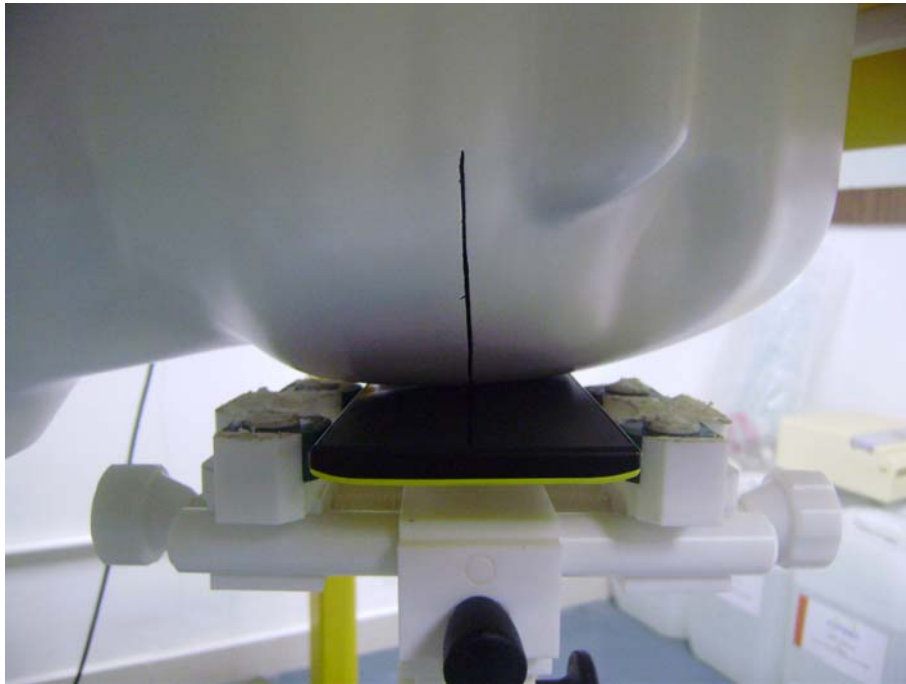


**Tilt**

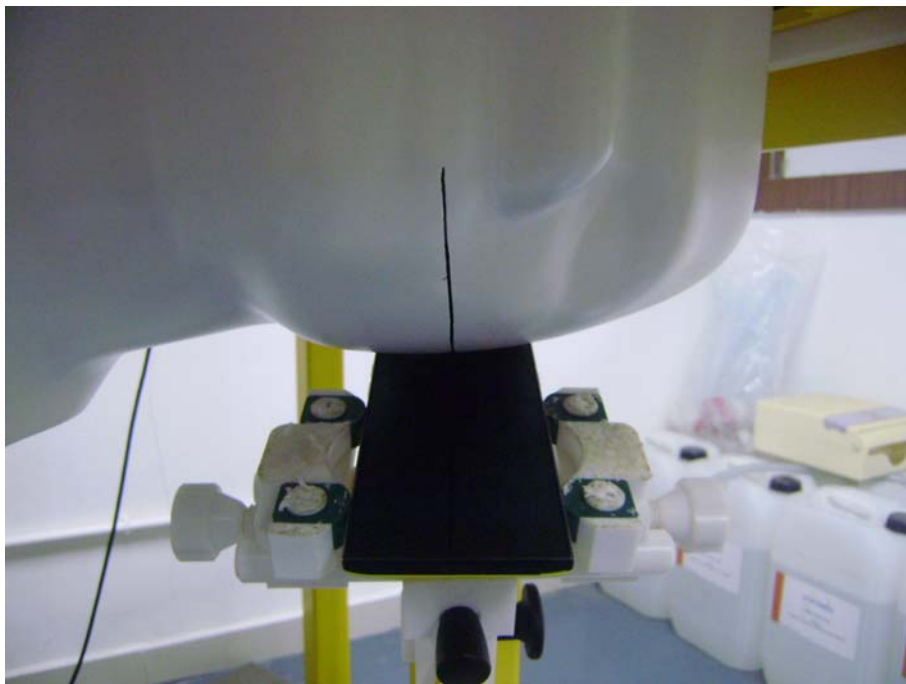


**Test View 2 (Left Head)**

**Cheek**



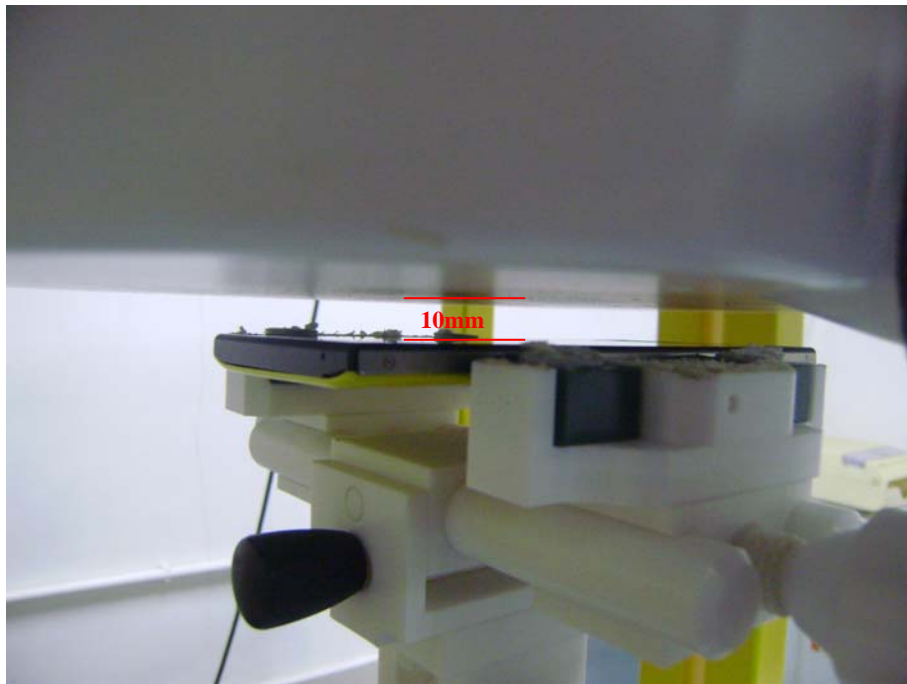
**Tilt**





**Test View 3**

**Body Front**



**Body Back**



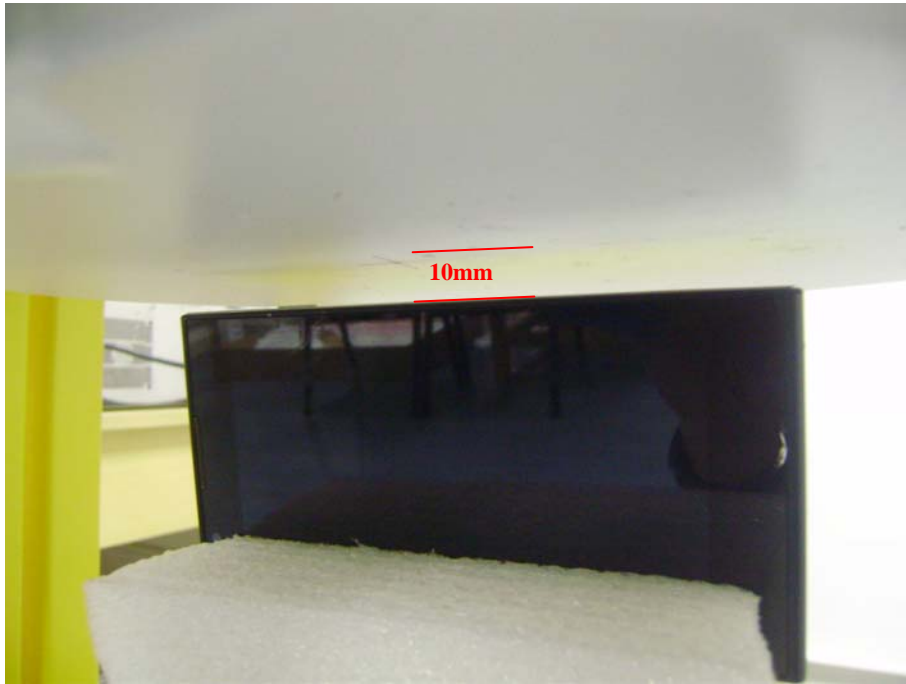
**Body Top**



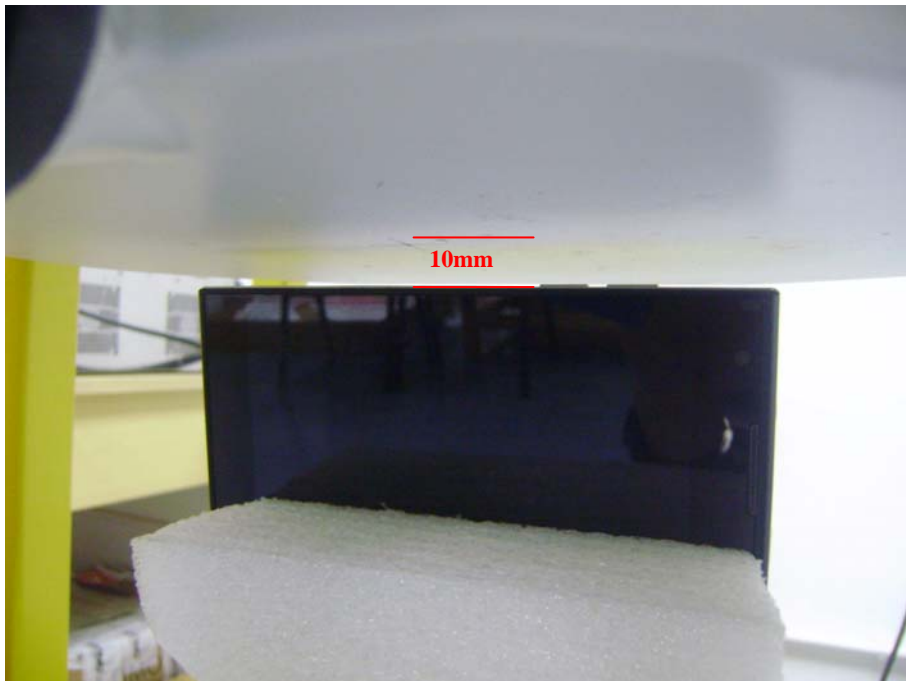
**Body Bottom**



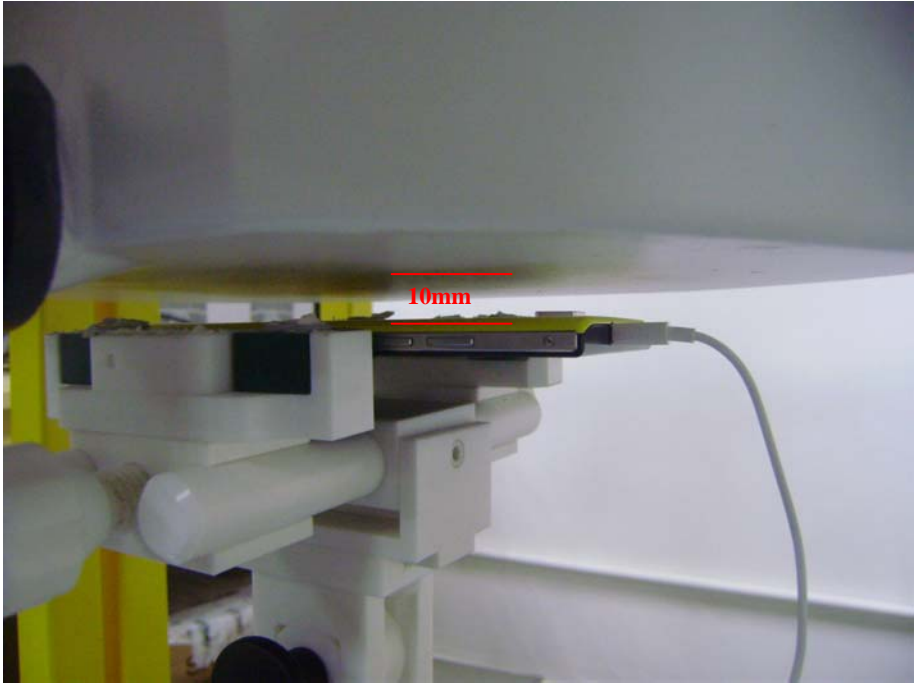
### Body Right



### Body Left



**Body Worn**



## **Annex E. Calibration Certificate**

---

*Please refer to the exhibit for the calibration certificate*

**\*\*\*\*\* END OF REPORT \*\*\*\*\***