

BT-Transceiver II

Getting Started

Copyright

Copyright © 2022 Accuver

This manual is protected under international copyright laws.

No part of this manual may be reproduced, distributed, translated, or transmitted in any form or by any means, electronic or mechanical, including photocopying, recording, or storing in any information storage and retrieval system, without the prior written permission of Accuver.

FCC Statement

FCC Part 15C 15.247 is applied to the transmitter.

Federal Communication Commission Interference Statement

This equipment has been tested and found to comply with the limits for a Class B digital device, pursuant to Part 15 of the FCC Rules. These limits are designed to provide reasonable protection against harmful interference in a residential installation.

This equipment generates, uses and can radiate radio frequency energy and, if not installed and used in accordance with the instructions, may cause harmful interference to radio communications. However, there is no guarantee that interference will not occur in a particular installation. If this equipment does cause harmful interference to radio or television reception, which can be determined by turning the equipment off and on, the user is encouraged to try to correct the interference by one of the following measures

- ※ Reorient or relocate the receiving antenna.
- ※ Increase the separation between the equipment and receiver.
- ※ Connect the equipment into an outlet on a circuit different from that to which the receiver is connected.
- ※ Consult the dealer or an experienced radio/TV technician for help.

This device complies with Part 15 of the FCC Rules. Operation is subject to the following two conditions:

- (1) This device may not cause harmful interference, and
- (2) this device must accept any interference received, including interference that may cause undesired operation.

FCC Caution

Any changes or modifications not expressly approved by the party responsible for compliance could void the user's authority to operate this equipment.

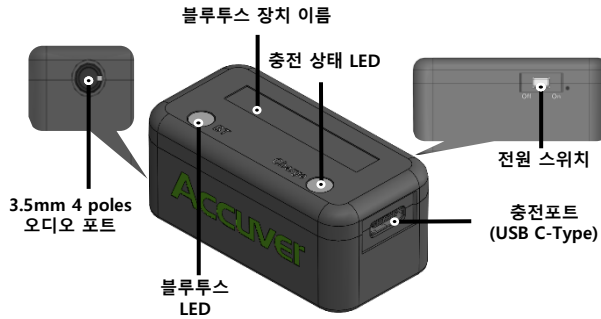
This device and its antenna(s) must not be co-located or operation in conjunction with any other antenna or transmitter.

IMPORTANT NOTE (FCC Radiation Exposure Statement)

This equipment complies with FCC radiation exposure limits set forth for an uncontrolled environment.

This equipment should be installed and operated with minimum distance 20cm between the radiator & your body.

BT-Transceiver II (ACX11X)

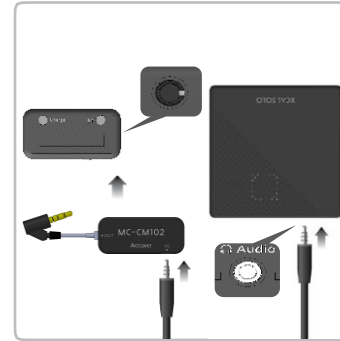


◆ Accessories for Voice MOS Measurement

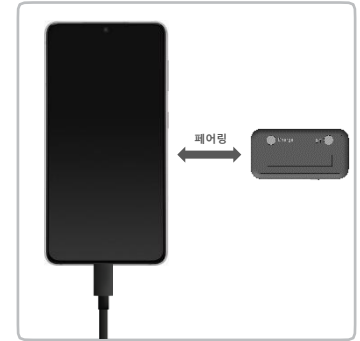
사양	
Bluetooth 버전	5.2
프로파일	A2DP / AVRCP / HFP / SPP / aptX Voice
코덱	SBC / AptX / AptX HD / AptX Adaptive
입력 전압	DC +5V / 1A
배터리	+3.8V / 450mAh / 1.71Wh
크기 / 무게	W28mm * D54mm * H24mm / 30g
RF 주파수 대역	2402 to 2480 MHz
RF 변조	GFSK, $\pi/4$ DQPSK, 8DPSK
RF 데이터 속도	BDR 1Mbps / EDR 2.3Mbps
RF 출력 전력	BDR - 13dBm \pm 1dB / EDR - 10 dBm \pm 1dB
Bluetooth 상태 LED	
녹색 & 빨강 교차 점등 (200ms)	준비
녹색 천천히 점등 (2.4s)	페어링(기기 연결)
빨간색 천천히 점등 (2.4s)	연결 해제
충전 상태 LED	
녹색	충전 완료
빨간색	충전 중

연결 방법

⚠ Audio Port가 없는 스마트폰에서 MOS 측정을 하기 위해서 사용됩니다. 측정을 위해서는 BT-Transceiver II (ACX11X)와 XCAL-Solo III 연결하고, BT-Transceiver II (ACX11X)와 스마트폰의 Bluetooth 페어링을 합니다.

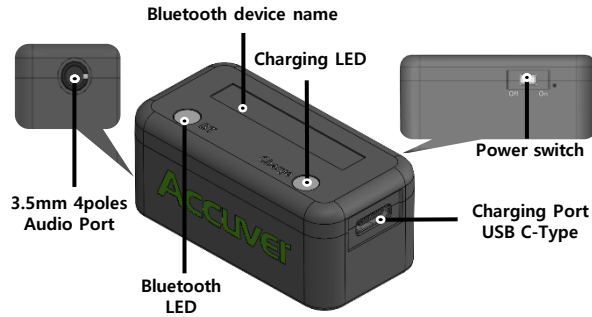


1 XCAL-Solo III와 MOS Kit, BT-Transceiver II를 연결 합니다.



2 스마트폰과 BT-Transceiver II를 페어링 합니다.

BT-Transceiver II (ACX11X)

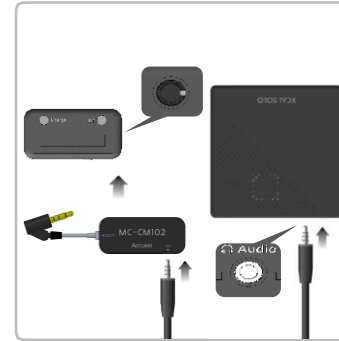


◆ Accessories for Voice MOS Measurement

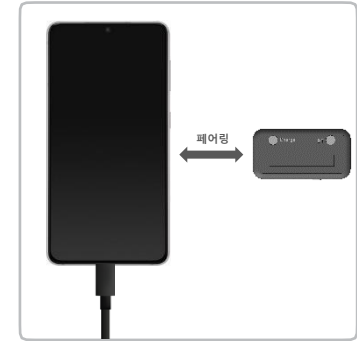
Specification	
Bluetooth Version	5.2
Profile	A2DP / AVRCP / HFP / SPP / aptX Voice
Codec	SBC / AptX / AptX HD / AptX Adaptive
Input Voltage	DC +5V / 1A
Battery	+3.8V / 450mAh / 1.71Wh
Size / Wight	W28mm * D54mm * H24mm / 30g
RF Frequency Band	2402 to 2480 MHz
RF Modulation	GFSK, $\pi/4$ DQPSK, 8DPSK
RF Data Rate	BDR 1Mbps / EDR 2,3Mbps
RF Output Power	BDR - 13 dBm \pm 1dB / EDR - 10 dBm \pm 1dB
Status Bluetooth LED	
Green & Red alternate quick(200ms) flash	Stand-by
Green flash Slowly(2.4s)	Pairing Connect
Red flash Slowly(2.4s)	Pairing Disconnect
Status Charging LED	
Green	Charging Complete
Red	Charging

How to connect

- ⚠** It is used to measure MOS on a smartphone without Audio Port.
For measurement, connect BT-Transceiver II (ACX11X) to XCAL-Solo III, and Bluetooth pairing between BT-Transceiver II (ACX11X) and smartphone.



- 1** Connect the MOS Kit, BT-Transceiver II with the XCAL-Solo III.



- 2** Pairing the Smartphone with the BT-Transceiver II.



Memo

Accuver Americas

support.usa@accuver.com
+1 469 241 6100

www.accuver.com

Accuver Japan

inquiry.aj@accuver.jp
+81 3 6430 2580

www.accuver.jp

Innowireless Korea

sales@innowireless.com
+82 1899 1582

www.innowireless.com

Accuver EMEA

support.emea@accuver.com
+44 203 457 4486

www.accuver.com

Accuver APAC

support.apac@accuver.com
+852 2210 7004

www.accuver.com

Innowireless India

innoindia.support@innowireless.com
+91 224963 4902

www.innowireless.com

Accuver Poland

support.emea@accuver.com
+48 22 370 2518

www.accuver.com

Accuver Shanghai

support.apac@accuver.com
+86 187 0659 0330

www.accuver.com