

Figure 1: Placement of Label Inside Dispenser

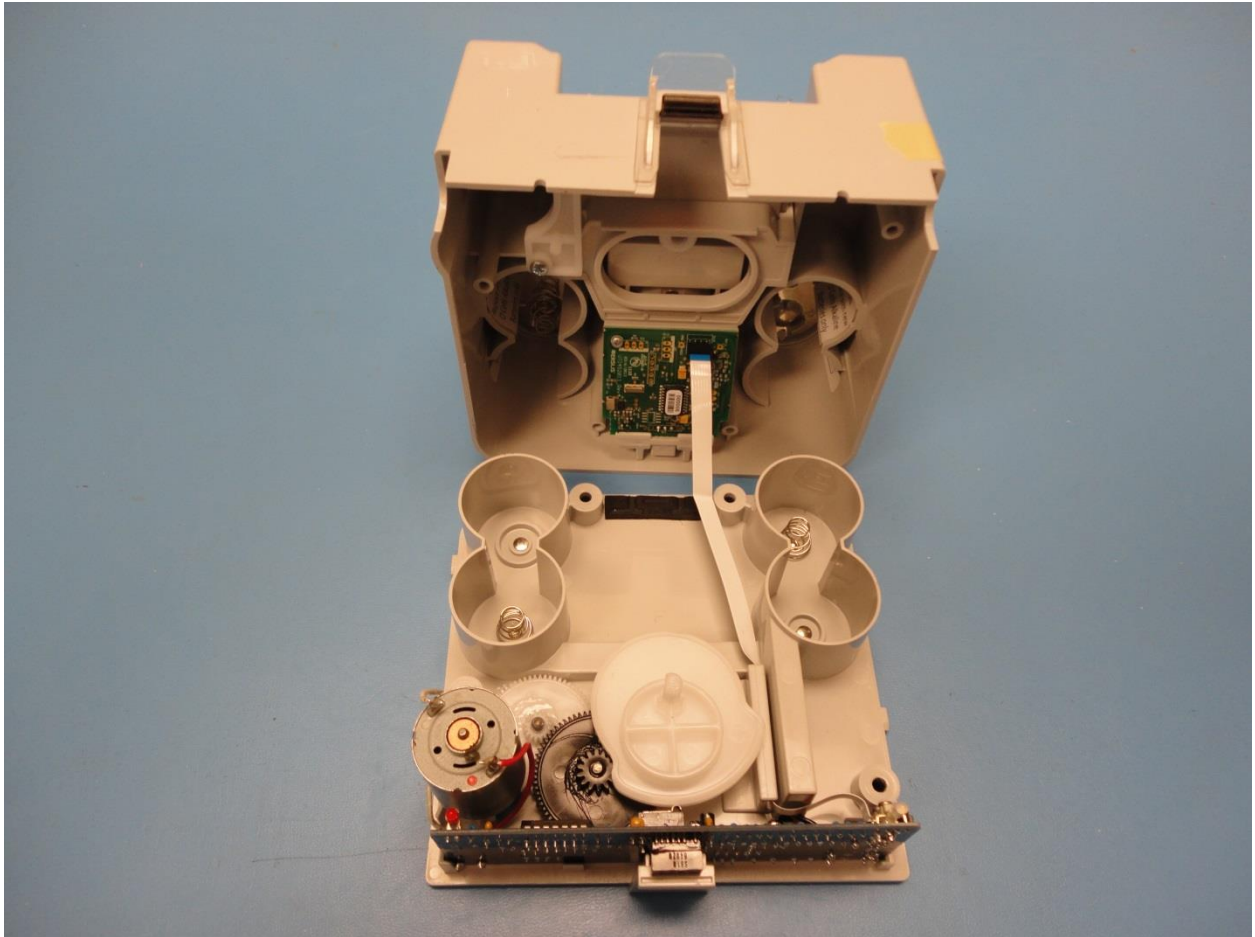


Figure 2: Interior Layout of Circuit Boards



Figure 3: Versus (Radio Frequency) Board Connected (Component Side)

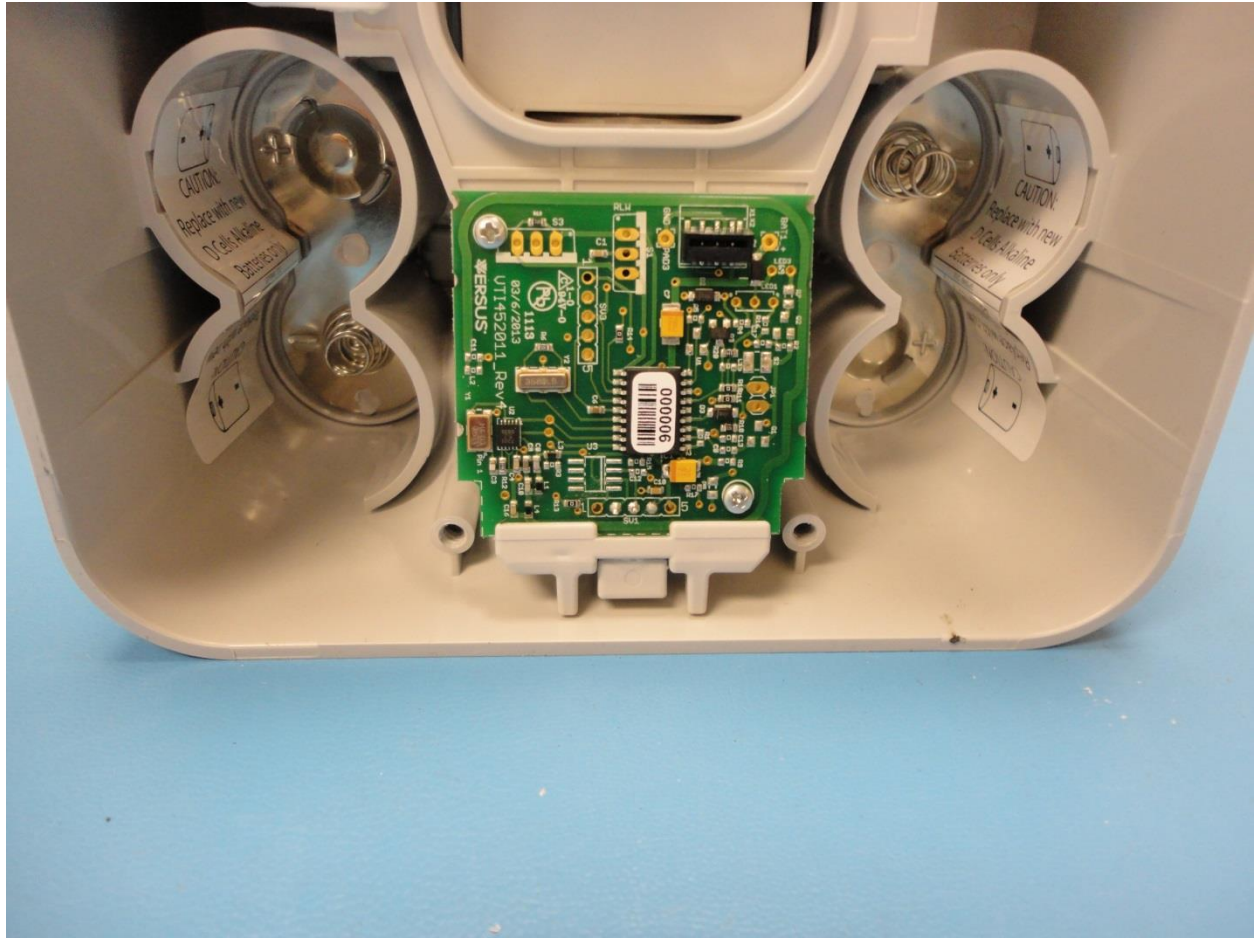
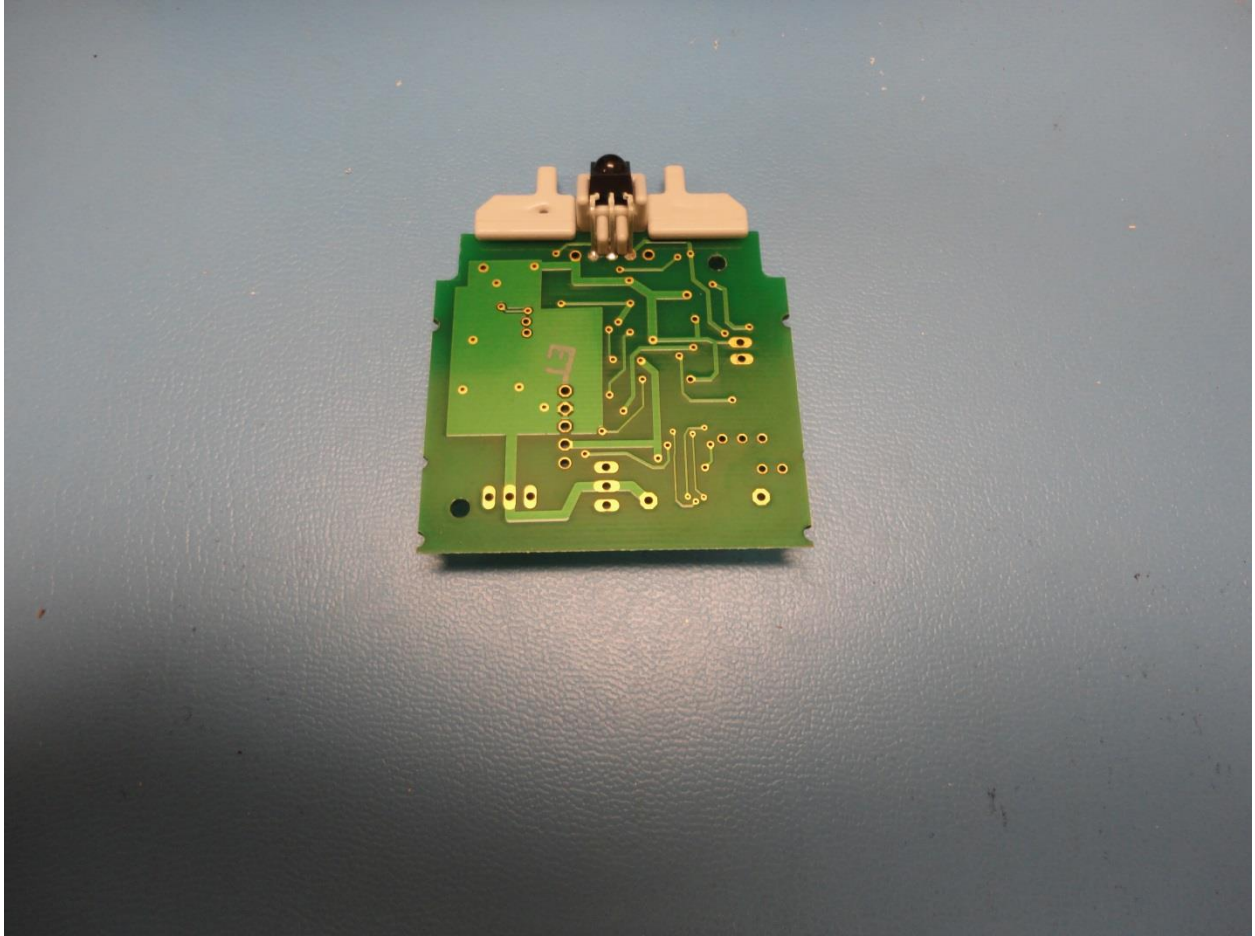


Figure 4: Versus (RF) Board Component Side



**Figure 5: Versus (RF) Board Reverse Side**

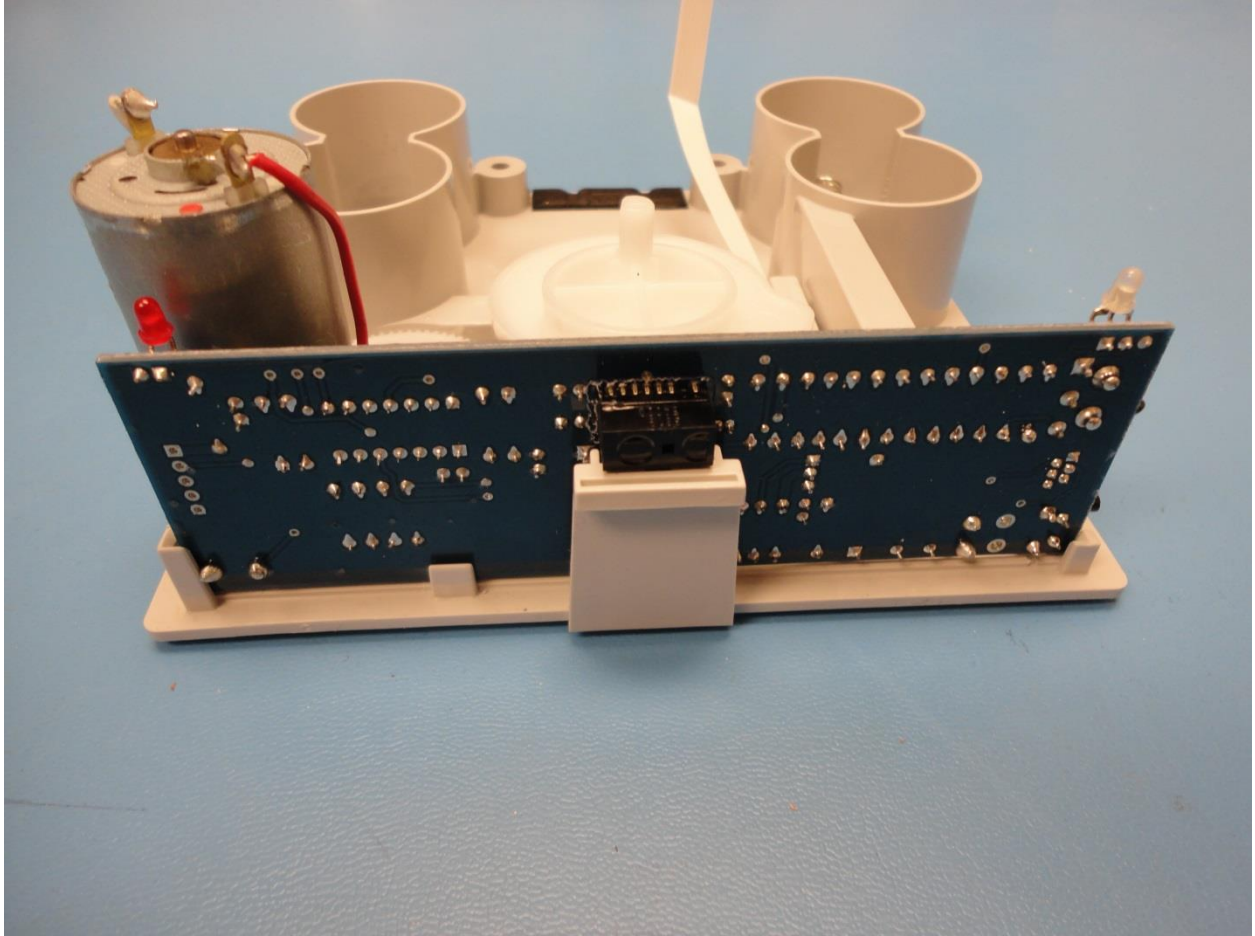


Figure 6: Georgia-Pacific Board Mounted in Dispenser

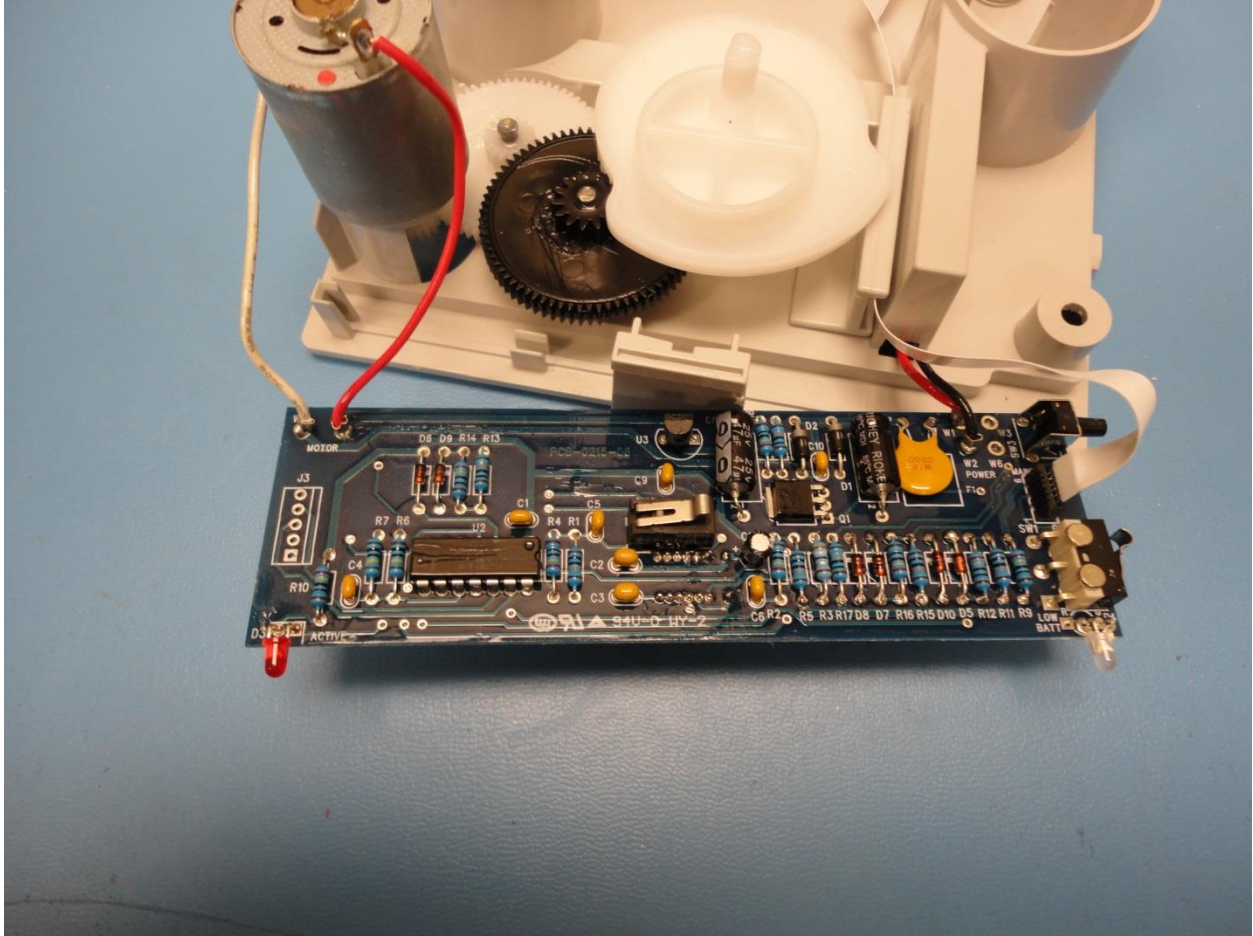


Figure 7: G-P Board Component Side

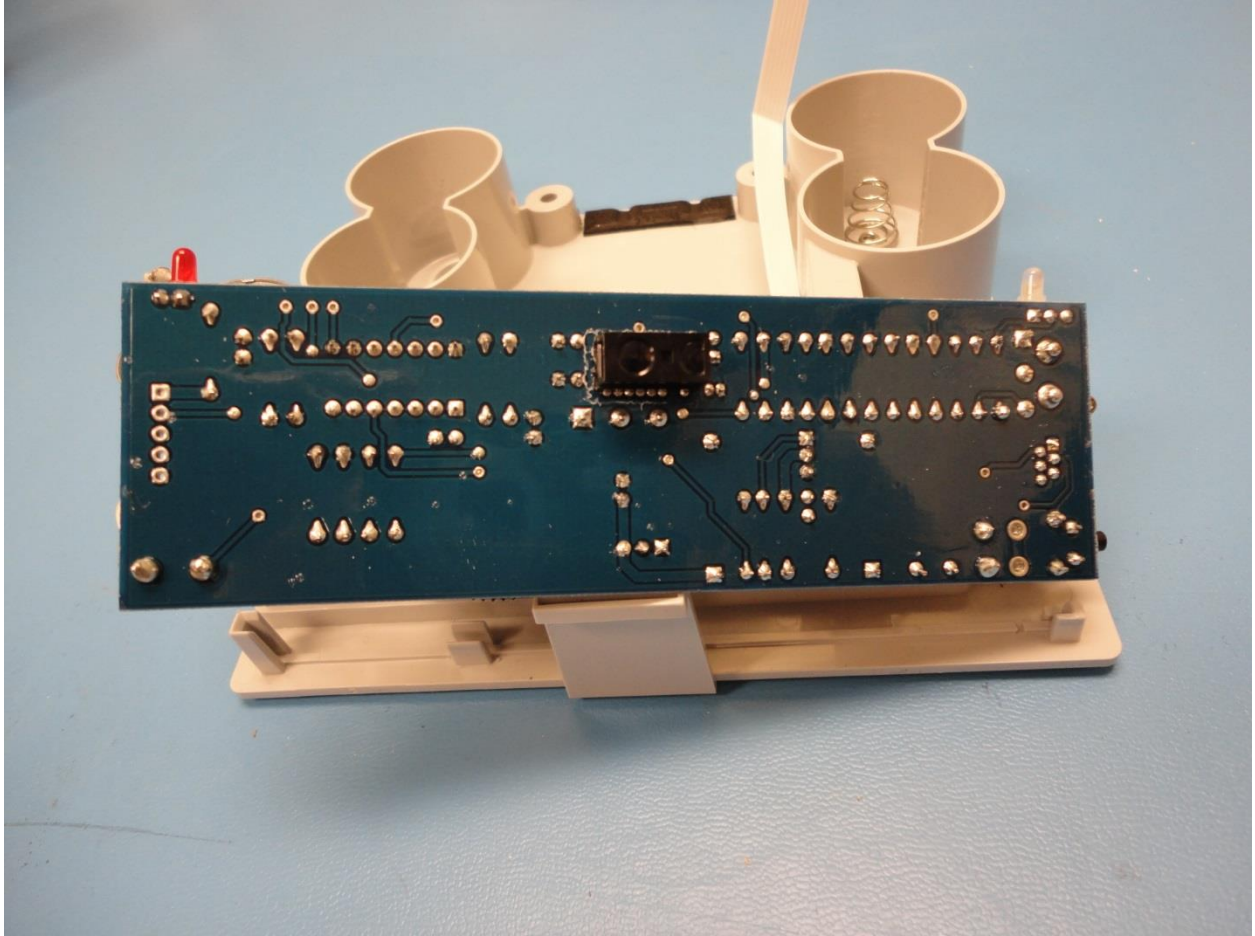


Figure 8: G-P Board Solder Side