



## 1. How to use Neo smartpen

### (1) Charging the pen

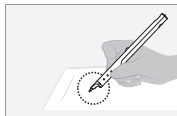
- Make sure to charge the product after the purchase as it may have low battery.
- The LED lamp will turn red while the battery is being charged. Once charging is complete, it'll change back to green.(If the battery is being charged with PC, PC will recognize the pen as a removable disk an the LED light turns violet.)

### (2) Power ON/OFF

- If you press the power button or put the pen tip on the paper, the pen will be activated with LED lights on within a second.(The Auto Power function is enabled when the pen is first connected to the App. You can change the setting in the App.)
- When the power is on, hold the power button for more than 2 seconds, and the power will turn off with flashing LED lights.
- If there is no action taken for more than 20 minutes, the power will be turned off automatically. (You can change the auto-power-off time in the setting. The longer auto-power-off time is set, the shorter pen usage time is available.)
- If you do not use this product for more than 10 seconds, it will automatically change to standby (low power consumption) mode to reduce battery power consumption.

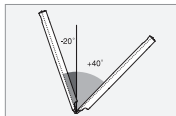
### (3) How to grip

The recognition rate is heavily affected by the direction of the optical sensor's angle. Sensor(oval shaped part adjacent to the pen tip) should face downwards. Deviating from the appropriate degree, or holding the pen in the wrong direction could cause difficulties with capturing your writing or drawing.



#### Usage Angle

Hold the pen that does not cause pressure on the wrist and maintain a natural writing angle.



#### Allowable Recognition Angle

Product's acceptable recognition angle is  $-20^{\circ} \sim +40^{\circ}$ . (90° vertical standard)

### (4) LED color status display

Status	LED Color
Power ON	illuminating
Power OFF	<sup>①</sup> Dimming
Being charged	illuminating
Fully charged	illuminating and therturned OFF
Low battery power notification	Flashing
During USB connection	illuminated
Bluetooth connection standby	Flashing
During App connection	<sup>①</sup> Dimming
Low storage notification	Flashing
During firmware update	<sup>①</sup> Dimming
Firmware update failure	Flashing
<sup>②</sup> Verify optical sensor or usage environment	illuminated (with alarms)

<sup>①</sup>Dimming : Indicates slowly getting dark and then bright while flashing.

<sup>②</sup>Check if there's any dirt around optical sensor or on papers.

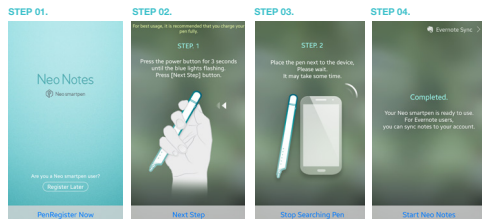
## 2. Neo Notes App



Neo Notes

- **Smartpen** works in tandem with mobile app "**Neo Notes**"
- The app can be downloaded from Google play or Appile app store.
- Please search for '**Neo Notes**', '**Neo smartpen**' in the search bar to find the App

## 3. Registering Smartpen to mobile app



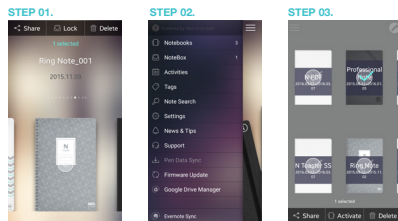
- STEP 01.** Enable the **Bluetooth** function of the smart device.
- STEP 02.** Run Neo Notes and tap the '**Pen Register Now**' button below.
- STEP 03.** Please follow the instructions as shown in the app.
- STEP 04.** If the pen has been successfully registered, the Pen Registration screen appears in the App. Now, press 'Start Neo Notes' button and start writing on **N notebooks**.

## 4. Using without app connection

- Neo smartpen can be used when the mobile app is not running.
- The content that you write while the mobile app is off will be transferred later when the app and **Neo smartpen** are connected

## 5. How to use Neo Notes

- (1) **NoteBox** • Use notebook "Lock" function if you want to use the same type of notebooks for multiple times.

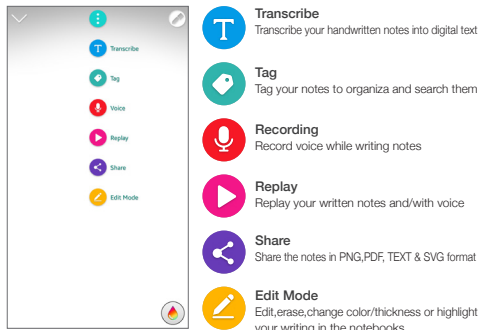


- STEP 01.** Place long tap on the notebook that you wish to lock, then 'Share', 'Lock' & 'Delete' button will appear
- STEP 02.** Select 'Lock' button to move your notebook to NoteBox
- STEP 03.** You can unlock the notebooks anytime.

Neo smartpen

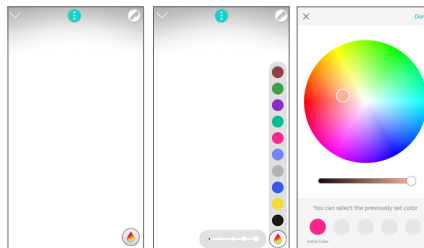
## (2) Using button


- Press  button on your note page to see.



## (4) Color & Thickness change

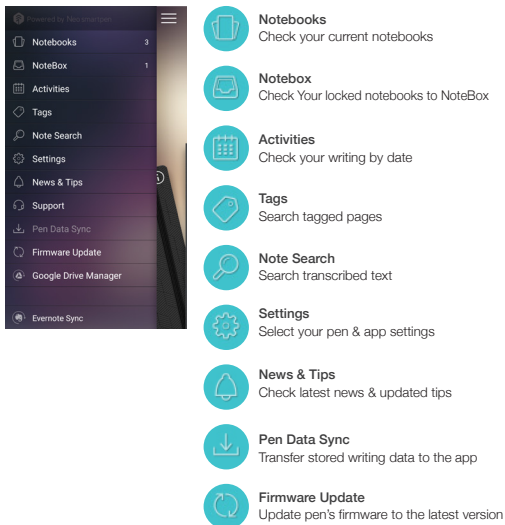
- You have various pen colors and thickness settings to choose from in the app.



- Tap on  icon, then a color palette will open and select a thickness and color (while the smartpen is connected to the app)
- Tap anywhere outside the palette to make it disappear.

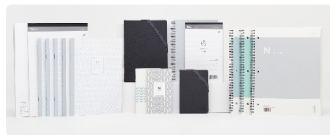
## (3) Pen preference settings

- Press  button to see pen setting menu.



## 6. Notebooks & Stores

Find the perfect fit for among our wide range of notebooks.



### World

[shop.neosmartpen.com](http://shop.neosmartpen.com) (except Latin America and Africa)

\* Pentips are D1 type which you can buy from any online or stationary store

## Product specification table

<b>Model Name</b>	NWP-F50	
<b>Support</b>	Supported OS / Bluetooth Specification	
	<b>OS version</b>	<b>Bluetooth version</b>
<b>Android</b>	Kitkat 4.4 or higher	2.1 or higher
<b>iOS</b>	iOS 8.1 or higher (Pod 5th generation, iPhone 5, iPad 3rd generation)	4.0 LE
<b>Wireless Connection</b>	Bluetooth 4.2 (CLASSIC / BLE)	
<b>Receiving / Transmitting Frequency</b>	2402 – 2480MHz	
<b>Antenna Output</b>	Class 2	
<b>Storage Media</b>	90MB of internal memory	
<b>Battery</b>	Rechargeable Lithium Polymer Battery 3.7V / 300mAh	
<b>Charging Time</b>	About 2 hours	
<b>Rated Input</b>	DC 5V / 300mA	
<b>Usage Time</b>	125 days in standby mode, 5 hours for continuous writing	
<b>Size and Weight</b>	Length: 156mm (without a pen cap), thickness: 11.5~11.8mm / 22g (without a pen cap)	
<b>PC Connection Method</b>	USB2.0HS (microUSB)	
<b>Usage Environment</b>	Temperature: 10~35°C / humidity: ~95%	
<b>Ink refills</b>	D1 multi pen ink refills	

R1: Any dangerous activities with the pen tip are prohibited.

R2: Stop the usage when the product gets heated.

R5: Do not store the product after the usage where room temperature is possibly high, such as interior of vehicle.

R7: Ink or any dirt in the product may cause illness in case of putting it one's mouth during usage.

CCAK15LP0650T3 CE1177



\* Direct sunshine or any strong light may cause the loss of recognition of writing.

Product Marketing Name(PMN): Neo smartpen  
Firmware Version Id Number(FVIN): REV. 1.0

# PRODUCT WARRANTY

## PRODUCT WARRANTY

Please contact the store where you purchased the product or NeoLAB Convergence for customer service/support.

Neo smartpen provides guaranteed warranty in accordance with relevant laws of the specified country

### Product Warranty

Product Name	Neo smartpen
Product No. (Serial No.)	
Purchase Date	
Seller	
Purchase Price	

- Keep the product no. (serial no.) in a safe place as it is required for checking the product warranty period when requesting customer service / support.
- The product no. is attached on the surface of the product package.

### FCC Information to User

This equipment has been tested and found to comply with the limits for a Class B digital device, pursuant to Part 15 of the FCC Rules. These limits are designed to provide reasonable protection against harmful interference in a residential installation. This equipment generates, uses and can radiate radio frequency energy and, if not installed and used in accordance with the instructions, may cause harmful interference to radio communications. However, there is no guarantee that interference will not occur in a particular installation. If this equipment does cause harmful interference to radio or television reception, which can be determined by turning the equipment off and on, the user is encouraged to try to correct the interference by one of the following measures:

- Reorient or relocate the receiving antenna.
- Increase the separation between the equipment and receiver.
- Connect the equipment into an outlet on a circuit different from that to which the receiver is connected.
- Consult the dealer or an experienced radio/TV technician for help.

### Caution

Modifications not expressly approved by the party responsible for compliance could void the user's authority to operate the equipment.

### IMPORTANT NOTE : FCC RF Radiation Exposure Statement

This equipment complies with FCC RF radiation exposure limits set forth for an uncontrolled environment. This equipment should be installed and operated with a minimum distance of 20 centimeters between the radiator and your body. This transmitter must not be co-located or operating in conjunction with any other antenna or transmitter.

NOTE: THE GRANTEE IS NOT RESPONSIBLE FOR ANY CHANGES OR MODIFICATIONS NOT EXPRESSLY APPROVED BY THE PARTY RESPONSIBLE FOR COMPLIANCE. SUCH MODIFICATIONS COULD VOID THE USER'S AUTHORITY TO OPERATE THE EQUIPMENT. THIS DEVICE COMPLIES WITH PART 15 OF THE FCC RULES. OPERATION IS SUBJECT TO THE FOLLOWING TWO CONDITIONS: (1) THIS DEVICE MAY NOT CAUSE HARMFUL INTERFERENCE, AND (2) THIS DEVICE MUST ACCEPT ANY INTERFERENCE RECEIVED, INCLUDING INTERFERENCE THAT MAY CAUSE UNDESIRABLE OPERATION.



### IC Information to User

This device complies with Industry Canada's licence-exempt RSSs. Operation is subject to the following two conditions:

- (1) This device may not cause interference; and
- (2) This device must accept any interference, including interference that may cause undesired operation of the device.

Le présent appareil est conforme aux CNR d'Industrie Canada applicables aux appareils radio exempts de licence. L'exploitation est autorisée aux deux conditions suivantes : (1) l'appareil ne doit pas produire de brouillage, et

- (2) l'utilisateur de l'appareil doit accepter tout brouillage radioélectrique subi, même si le brouillage est susceptible d'en compromettre le fonctionnement.

## 제품 보증서

Neo smartpen N<sub>2</sub>의 품질 보증 기간은 1년이며, 부품 보수 기간은 2년입니다.

### 제품 보증서

제품명	Neo smartpen
제품번호(Serial No.)	
구입일자	
구입처	
구입가격	

- 품질별 소비자 피해 보상규정에 따라 아래와 같이 제품에 대한 보증을 시행합니다.
- 보상 여부 및 내용 등보는 구입로부터 7일 이내, 피해 보상은 통보일로부터 14일 이내에 해결해 드립니다.
- 제품 번호(Serial No.)는 A/S 신청 시 제품 보증기간을 확인하기 위해 꼭 필요한 항목이니 반드시 기록 받으실 것을 부탁드립니다.
- 제품 번호(Serial No.)는 제품의 제품 포장을 절연에 부착되어 있습니다.