

Streaming 2.4GHz HD VIDEO DRONE

GETTING TO KNOW YOUR DRONE

PLEASE READ ALL WARNINGS AND INSTRUCTIONS PRIOR TO USE. KEEP THIS DOCUMENT AS IT CONTAINS IMPORTANT INFORMATION ABOUT YOUR DRONE.

1. CHARGING

- Drone must be charged before each use (Charge Cable included).
Indicator light will turn off once fully charged.
Install batteries in remote.

2. PAIRING

Before each flight pair the remote with the drone.

- Turn your drone on and place on a flat, level surface.
Turn on the remote.
Steady lit lights on the drone confirm pairing.
Repeat steps 1 and 2 if necessary.

3. DIRECTIONAL LIGHTS

- White lights indicate the front of the drone.
Red lights indicate the back of the drone.
Not applicable in auto-orientation mode.

4. REMOTE CONTROL OVERVIEW

Practice flying your drone below 10 feet and at low speeds until comfortable with all controls

to avoid unnecessary damage or injury.
Left joystick:
Up/Down controls elevation
Left/Right controls spin
Right joystick: controls flight direction
Direction Trim: use to eliminate drift
To cut power to drone, move left joystick to down position.

5. BEGINNER/EXPERT MODE

The drone is set for Beginner Mode by default. While in Beginner Mode:

- Beginner/Expert Mode button is dark.
Speed Select switch is disabled.
Overall drone flight speed is reduced.
The Stunt button is disabled.

- Max altitude is 8 feet.
Press and hold the Beginner/Expert Mode button to switch to Expert Mode. A tone will sound and the Flight Mode button will light. All features will be enabled.

QUESTIONS OR CONCERNS? PLEASE GIVE US A CALL...WE'RE HERE TO HELP

CUSTOMER SERVICE

(800) 374-2744

Before calling please locate the 10-digit code printed on the back of your remote



Streaming 2.4GHz HD VIDEO DRONE

INTRODUCTION

Congratulations on your purchase of the Streaming 2.4 GHz HD Video Drone. Get ready to soar to new heights. Master the art of drone flying and stunts with remote control maneuverability. This lightweight stunt drone will provide hours of fun.

SPECIFICATIONS

Drone Battery: 800 mAh Li-po
Remote Controller Battery: 6 x 1.5V AA
Charging Time: Approximately 120 minutes
Maximum Recommended Altitude 150 ft.

TABLE OF CONTENTS

General Warnings Page 1
Contents and Remote Battery Installation Page 2
Charging Battery and Replacing Propellers Page 3
Remote Overview Page 4
Operating Drone Page 5
Modes Page 6
Tips and FCC Warning Page 7

Streaming 2.4GHz HD VIDEO DRONE

READ ALL WARNINGS AND PRECAUTIONS BEFORE USE.

SAFETY WARNINGS:

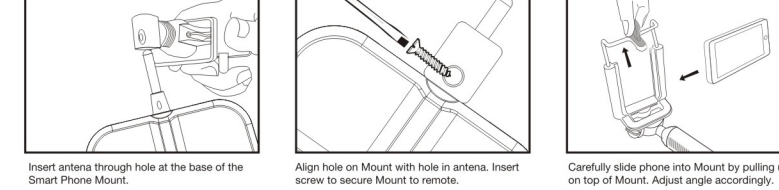
- Not recommended for children under 12 years of age. As with all electrical products, precaution should be observed during handling and use to reduce the risk of electrical shock.
Adult supervision is required at all times.
Before each use, an adult should review the product and battery to determine that no damage or hazards exist.
DO NOT TOUCH SPINNING PROPELLERS.
Do not allow anything to intentionally make contact in any way with spinning propellers.
Prevent contact with spinning blades by turning off remote prior to handling drone.
Use caution and pay attention to your surroundings while operating drone.
Do not fly drone into animals, people, or inanimate objects.
Keep drone away from power lines, buildings, trees, public areas, and any other potentially hazardous areas.
Do not operate in rain, heavy wind, and/or any type of severe weather.
Do not land drone on wet surfaces.
Never touch or allow others to touch drone while it is flying.
Always turn drone off when it is not in use.
Always fly drone in large open areas.
Never fly drones above or near people, sudden changes in wind or other conditions could lead to unexpected crashes.
Always use caution when flying drone vehicles, obey relevant laws, respect the privacy and property rights of others.
The drone shall never be modified or used for anything except its intended purpose.

PLEASE RECYCLE OR DISPOSE OF ELECTRONICS PROPERLY. RECYCLING INFORMATION IS AVAILABLE AT WWW.MERCHSOURCE.COM

Invasion of Privacy Warning
Always be mindful of others privacy and do not record video or take images of others without their consent. Check and comply with your federal, state and local laws regarding privacy.

Streaming 2.4GHz HD VIDEO DRONE

INSTALLING PHONE HOLDER



OPERATING DRONE

Step 1 - Pre Flight Checklist

- Read all warnings and instructions.
Install remote batteries, page 2.
Make sure that drone and remote are powered off.
Install drone holder.
Charge battery, page 3.

Step 2 - Choosing a location

- Drone is designed to be flown indoors and outdoors.
Always make sure you have enough space to fly drone.
Always follow warnings, page 1.

Step 3 - Starting Drone

- Make sure your remote is off.
Slide drone switch to ON.
Place drone on a flat even surface (Fig 1).
Turn remote ON.
After a few moments, drone lights will flicker rapidly then remain steadily lit. The remote will beep once paired. If this does not occur, turn remote off and back on and repeat this step.

Step 4 - Lift Off

- Slowly and carefully press the Throttle Joystick up. Drone will begin to elevate. You can compensate for some of the drone's drifting by using the Multi Directional Button or by following Step 5. You may need to practice this step several times before successfully getting drone into the air.
You can let go of the throttle once you get to your desired elevation. The drone will engage its auto hover function.

Step 5 - Drone Begins to Drift

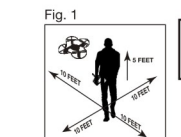
- Drone drifts backwards: Press the forward Direction Trim Button.
Drone drifts forwards: Press the Backwards Direction Trim Button.
Drone drifts left: Press the Right Direction Trim Button.
Drone drifts right: Press the Left Direction Trim Button.

Step 6 - Operating Drone in Flight

- The drone's range is approximately 400 feet or 150 feet of altitude.
Read and be aware of all warnings found on Page 1.
Maintain your desired elevation by using the Throttle.
Push the Throttle joystick to right or left to spin the drone.
Use the right joystick to move forward backwards, and side to side.
Review step 5 if your drone begins to drift.
Drone will begin to blink when drone is paired to remote and battery is low.

Step 7 - Landing Drone

- There are two ways to land the drone:
Press the Auto Land Button. The drone will slowly begin to land. If the drone begins to drift, you can still control the drone's direction using the Multi Directional Button.
Slowly and carefully press the Throttle Joystick down until drone lands. If the drone begins to drift, you can still control the drone's direction using the Multi Directional Button.



Always turn off remote prior to retrieving or picking up drone. This will help you avoid accidentally activating propellers.

Streaming 2.4GHz HD VIDEO DRONE

MODES

Stunt Button

- Once you are comfortable flying the drone, use the Stunt Button to perform acrobatic stunts.
Hover the drone to at least above 10 feet.
Press the Stunt Button. You will hear beeping coming from the remote.
Move the Multi Directional Button to the desired direction that you would like the drone to fly.

Auto Take Off Button

- Once you are comfortable flying the drone, use the Auto Take Off Button for an easy take off.
Turn remote ON.
Pair remote to drone: Bring the Throttle all the way up then bring it all the way down, remote will beep once paired.
Press the Auto Take Off Button. Drone will begin to elevate. Drone will level out around 5 ft off the ground and automatically enter into auto hover.
Now the drone can be controlled using both the throttle and the multi-directional joystick.

Auto Orientation Button

- Auto Orientation default setting is off. To enter this mode press Auto Orientation button. Remote will beep twice.
After drone is successfully paired, the 2 white LED lights toward orientation will be the original forward orientation, when drone is in auto orientation mode, the drone will orient to the user (remote), no matter what direction the drone is facing. Pushing the right stick up will send the drone away from the user, pushing it to the right will move the drone right, etc.
Remote will beep every 6 seconds to indicate the drone is in Auto Orientation mode.
To exit mode, press the button. Remote will sound 1 long beep indicating that it has exited Auto Orientation mode.

Auto Landing Button

- Make sure you have achieved level, balanced flight, where the drone is neither climbing nor descending. This mode allows you to safely and slowly land your drone without having to control the speed. It is done for you automatically.
The ideal auto landing height is 25-30 ft.
Press the button to trigger auto land. Remote will beep continuously until you exit the auto land mode.
To steer the drone during landing, use the right control until drone has reached the ground.
Press the button again to exit auto landing mode.

Camera - taking pictures and creating videos

- Taking a picture - press camera icon on app once to take a picture.
Creating video - press video icon on app once to take a video. Press the video icon on app again to stop recording.

TIPS

- Do not crash drone into sand or dirt. Drone gears may become clogged.
When first learning to fly, practice lifting off and hovering.
Stay several feet from walls and buildings.
Always press throttle all the way down after crashing or when something gets stuck in propellers.
Never fly drones above or near people, sudden changes in wind or other conditions could lead to unexpected crashes.
Always use caution when flying drone vehicles, obey relevant laws, respect the privacy and property rights of others.
The drone shall never be modified or used for anything except its intended purpose.

WARNING: Changes or modifications to this unit not expressly approved by the party responsible for compliance could void the user's authority to operate the equipment.

TROUBLESHOOTING:

- When remote switch is turned on, the remote light does not illuminate:
1) Check that batteries in the remote are installed correctly OR
2) Replace with new batteries

During drone flight, the remote LED is flashing:

- Remote batteries are low; replace them with new batteries

Drone and remote properly pair, but the drone will not lift-off:

- Drone battery needs charging. Use the USB Charge Cable to connect the drone to power source.

After trimming the drone, the drone flight is very unstable and cannot fly properly:

- One or more blades are most likely damaged;
2) Turn off the drone and remote.
3) Replace with the proper number replacement blade and try flying again.

After impact, the drone is unstable:

- Put the left remote control lever to the left bottom and put the right remote control lever to the right bottom at the same time which connected to the drone (diagram to right).
If the above does not resolve the issue, reboot the drone and controller and pair again.

If the drone blades will not stop spinning:

- Put the left remote control lever to the right bottom and put the right remote control lever to the left bottom at the same time. Hold for 4 seconds (Fig. 2).

Remote Controller and Drone can not be paired:

- Check Point: Remote Controller must be closed to Drone, not exceed 4 meters.

Note: If there are 2 sets of Drones within 4 meters for Pairing, you must pair one successfully before pairing the second set.

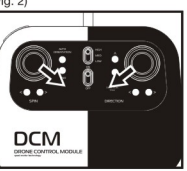
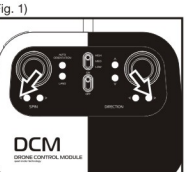
KEEP THIS INSTRUCTION MANUAL AS IT CONTAINS IMPORTANT INFORMATION FOR FUTURE REFERENCE.

This device complies with Part 15 of the FCC Rules. Operation is subject to the following conditions: (1) This device may not cause harmful interference, and (2) this device must accept any interference received, including interference that may cause undesired operation.
Note: This equipment has been tested and found to comply with the limits for a Class B digital device, pursuant to part 15 of the FCC Rules. These limits are designed to provide reasonable protection against harmful interference in a residential environment. This equipment generates, uses and can radiate radio frequency energy and, if not installed and used in accordance with the instructions, may cause harmful interference to radio communications. However, there is no guarantee that interference will not occur in a particular residence. If the equipment does cause harmful interference to radio or television reception, which can be determined by turning the equipment off and on, the user is encouraged to try to correct the interference by one or more of the following measures:
- Reorient or relocate the receiving antenna.
- Increase the separation between the equipment and receiver.
- Connect the equipment into a circuit different from that to which the receiver is connected.
- Consult the dealer or an experienced radio/TV technician for help.
FCC RF Radiation Exposure Statement: To maintain compliance with the FCC's RF exposure guidelines, place the drone at least 20cm from nearby persons.

Due to continuous product improvements, the picture on the manual may differ slightly from the actual product.

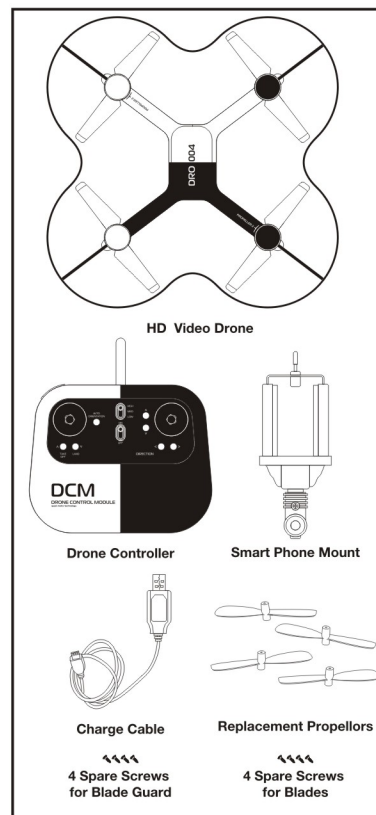
PATENT PENDING

Printed in China



Streaming 2.4GHz HD VIDEO DRONE

CONTENTS



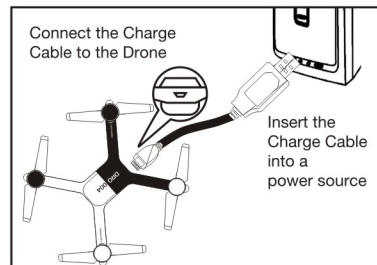
CHARGING BATTERY

Note: The Battery Charge Cable will light up when it is charging the battery and turn off when the battery is fully charged. Charge time is approximately 120 minutes.

Turn off the drone before charging.

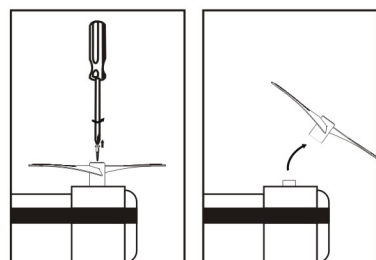
Connect the Battery Charge Cable to the charging port on the Drone.

Connect connector to power source.



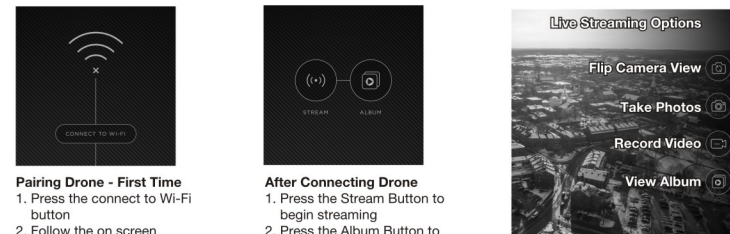
Replacing Propellers

- Follow diagram
Remove screw from top of Propeller
Remove broken Propeller and replace with new Propeller
Make sure you installed the correct blade. Each blade has a number written on it. Match the blades with the corresponding number on the drone
Insert screw into top of Propeller



DRONE APP

Go to your app store on your smart phone and download the "360 Flight" application.



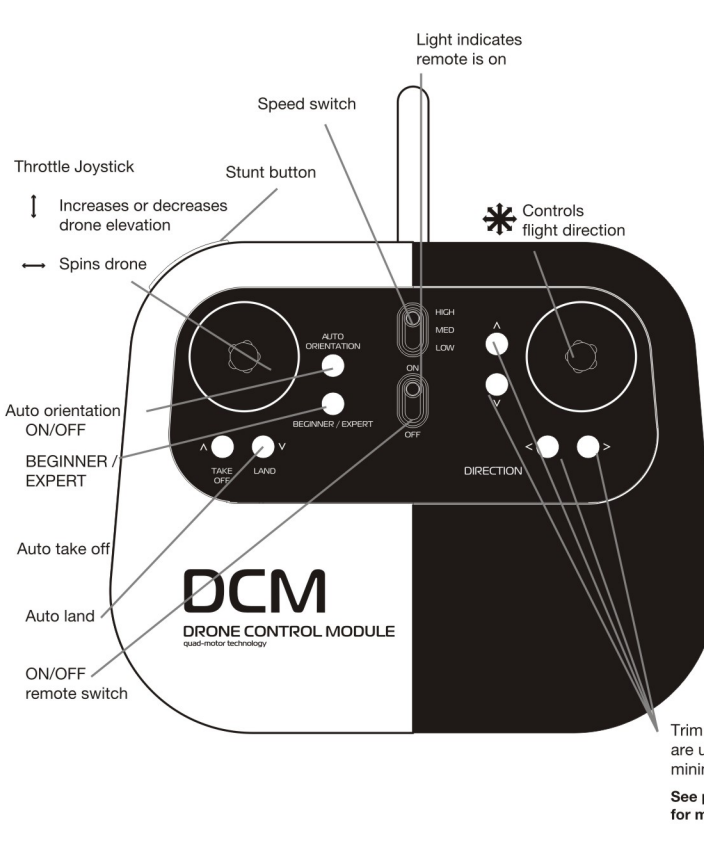
Pairing Drone - First Time

- Press the connect to Wi-Fi button
Follow the on screen instructions

After Connecting Drone

- Press the Stream Button to begin streaming
Press the Album Button to review pictures and videos

Streaming 2.4GHz HD VIDEO DRONE



Trim controls are used to minimize drift. See page 5 for more details