

©2017 Discovery Communications, LLC, and the Discovery™ logo are trademarks of Discovery Communications, LLC, used under license. All rights reserved. discoverykids.com

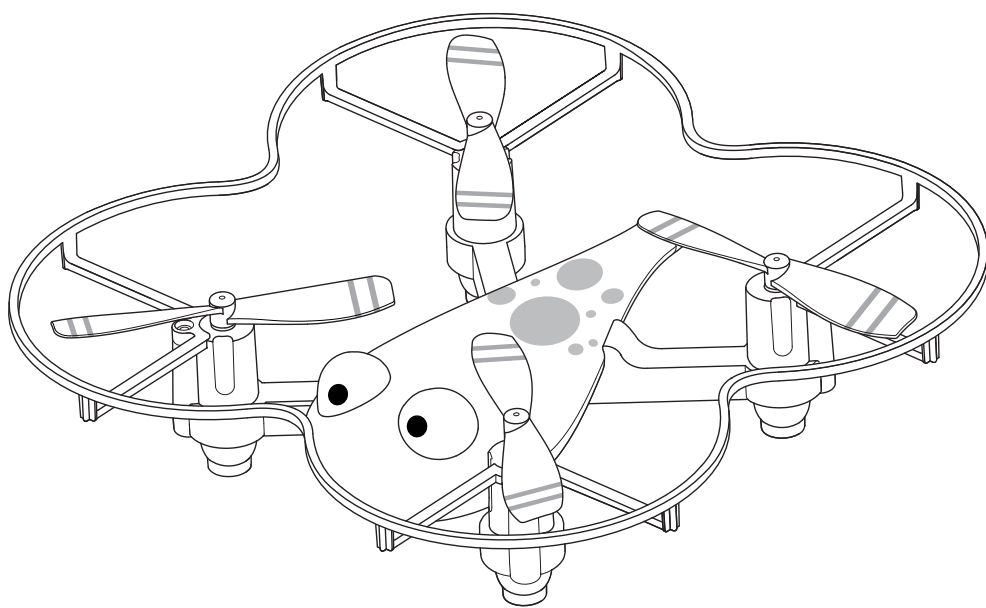
©2017 MerchSource, LLC. All rights reserved.
Distributed by MerchSource, LLC, Irvine, CA 92618.

For customer support, please visit www.merchsource.com or call 1-800-374-2744.

The artwork and design of this manual are protected by US copyright law and may not be reproduced, distributed, displayed, published or used for any purpose without prior written permission. It is not permitted to alter, remove or reproduce any trademarks or copyright notice from this manual.

Patent Pending

Printed in China



Stunt Drone

Zip 360 Degrees

BC

Introduction

Congratulations on your purchase of the Discovery™ Stunt Drone Zip 360 Degrees. It's time for some fun. This drone is capable of total controlled flight, fly up/down, left/right, and pitch forward or backward, on 6 axis gyro stabilization with a control range of 150 feet. Includes USB charging cable, replacement blades and auto pilot technology for auto orientation, auto take-off and auto landing control. Included, is a 350 mAh Li-po drone battery. The remote controller requires 6 "AA" batteries (not included). Alkaline batteries are recommended. Charging time: 40 minutes. The maximum recommended altitude is 75 Feet.

Please read all instructions and warnings in this manual prior to using your Stunt Drone Zip 360 Degrees, and keep this instruction manual as it contains important information for future reference. Adult assembly and a Phillips screwdriver (not included) will be required for battery installation.

Table of Contents

General Warnings	Page 2
Contents and Remote Battery installation	Page 3
Charging LiPo Battery and Replacing Propellers	Page 4
Remote Overview	Page 5
Operating Drone	Page 6, 7
Other Features	Page 8

1. Prepare for flight

- Drone must be charged before each use (Cable included).
- Indicator light on USB plug will turn off when fully charged.
- Install batteries in remote.

2. Choose your experience level

- Expert or Starter.

3. Pair your drone

Before each flight pair the remote with the drone:

1. Turn your drone on and place on a flat, level surface.
2. Turn on the remote.
3. Steady lit lights on the drone confirm pairing.
4. Repeat steps 1 and 2 if necessary.

IMPORTANT!

After a hard landing, turn drone and remote off. Then, repeat pairing!

4. Remote Control Overview

Practice flying your drone below 10 feet and at low speeds until comfortable with all controls to avoid unnecessary damage or injury.

- Left joystick: Up/Down controls elevation.
- Right joystick: controls flight direction
- Direction Trim: Use to eliminate drift

To cut power to drone, move left joystick to down position.

ADULT ASSEMBLY, CHARGING, AND BATTERY INSTALLATION IS REQUIRED. ADULT SUPERVISION IS REQUIRED. AGES 8+



SAFETY WARNINGS

- Not recommended for children under 8 years of age. As with all electrical products, precautions should be observed during handling and use to reduce the risk of electrical shock.
- Adult supervision is required at all times.
- Never fly drones above or near people, sudden changes in wind or other conditions could lead to unexpected crashes.
- Always use caution when flying drone vehicles, obey relevant laws, respect the privacy and property rights of others.
- The drone shall never be modified or used for anything except its intended purpose.
- Before each use, an adult should review the product and battery to determine that no damage or hazards exist.
- **DO NOT TOUCH SPINNING PROPELLERS**
- Do not allow anything to intentionally make contact in any way with spinning propellers or prevent contact with spinning blades by turning off remote prior to handling drone.
- Use caution and pay attention to your surroundings while operating drone
- Do not fly drone into animals, people, or inanimate objects
- Keep drone away from power lines, buildings, trees, public areas, and any other potentially hazardous areas.
- Do not operate in rain, heavy wind, and or any type of severe weather
- Do not land drone on wet surfaces
- Never touch or allow others to touch drone while it is flying
- Always turn drone off when it is not in use
- Always fly drone in large open areas

This device complies with Part 15 of the FCC Rules. Operation is subject to the following two conditions: (1) this device may not cause harmful interference, and (2) this device must accept any interference received, including interference that may cause undesired operation.

WARNING: Changes or modifications to this unit not expressly approved by the party responsible for compliance could void the user's authority to operate the equipment.

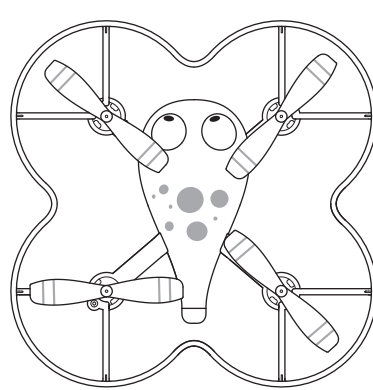
Note: This equipment has been tested and found to comply with the limits for a Class B digital device, pursuant to Part 15 of the FCC Rules. These limits are designed to provide reasonable protection against harmful interference in a residential installation. This equipment generates, uses and can radiate radio frequency energy and, if not installed and used in accordance with the instructions, may cause harmful interference to radio communications. However there is no guarantee that interference will not occur in a particular installation.

If this equipment does cause harmful interference to radio or television reception, which can be determined by turning the equipment off and on the user is encouraged to try to correct the interference by one or more of the following measures:

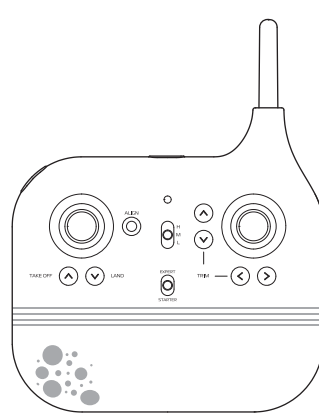
- Reorient or relocate the receiving antenna.
- Increase the separation between the equipment and receiver.
- Connect the equipment into an outlet on a circuit different from that to which the receiver is connected.
- Consult the dealer or an experienced radio/TV technician for help.

Fly-aways are the responsibility of the individual pilot and will not be replaced by the manufacturer.

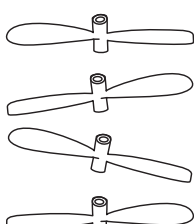
Contents



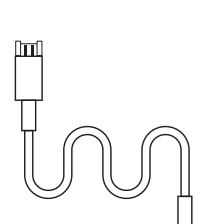
Drone



Drone Controller

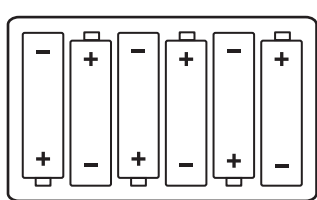


4 Replacement
Propellers &
4 Replacement Screws



USB Charger Cable

Remote Battery Installation



1. Slide open the remote's battery compartment.
2. Install 6 "AA" batteries as shown in the diagram above.
3. Replace and close battery compartment

BATTERY WARNING - LITHIUM-POLYMER:

- There is a risk of fire and personal injury if Li-Po battery is punctured, damaged or misused.
- Never expose battery to extreme temperatures or moisture.
- Do not subject battery to strong impacts.
- Always keep battery away from flammable materials.
- Only use manufacturer specified batteries, charger(s) and/or adapter, if applicable, specified by the manufacturer.
- Battery is not serviceable.
- Li battery could be toxic temperature before charging.
- While charging, never leave battery unattended.
- Recycle or dispose of battery according to federal, state and local laws.

KEEP THIS PACKAGING FOR REFERENCE AS IT CONTAINS IMPORTANT INFORMATION.

BATTERY WARNING:

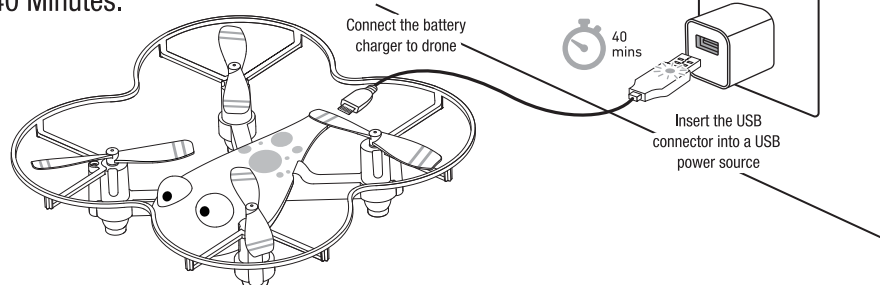
- Do not mix old and new batteries.
- Do not mix alkaline, standard (carbon-zinc), or rechargeable batteries.
- Insert batteries using the correct polarity. Do not short-circuit the supply terminal.
- Remove batteries when not in use. Recycle or dispose of exhausted batteries according to federal, state, and local laws. Do not dispose of batteries in a fire - they may catch on fire.
- Only use manufacturer specified batteries, charger(s) and/or adapter, if applicable, specified by the manufacturer.
- Always use, replace, and recycle if applicable batteries under adult supervision.

KEEP THIS PACKAGING FOR REFERENCE AS IT CONTAINS IMPORTANT INFORMATION.

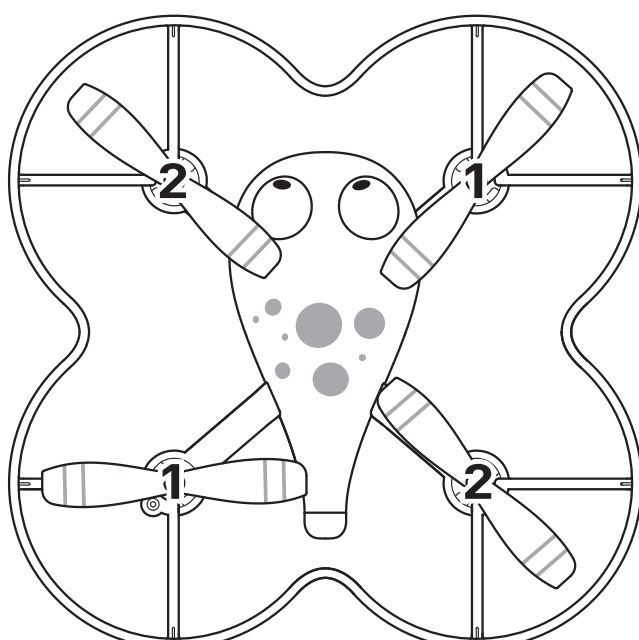
Charging Battery

1. Turn off the drone before charging.
2. Connect the battery charger cable to the port found on the rear of the drone.
3. Connect USB connector to the power source.

Note: The Battery Charger will light up when it is charging the battery and turn off when the battery is fully charged. Charge time is approximately 40 Minutes.

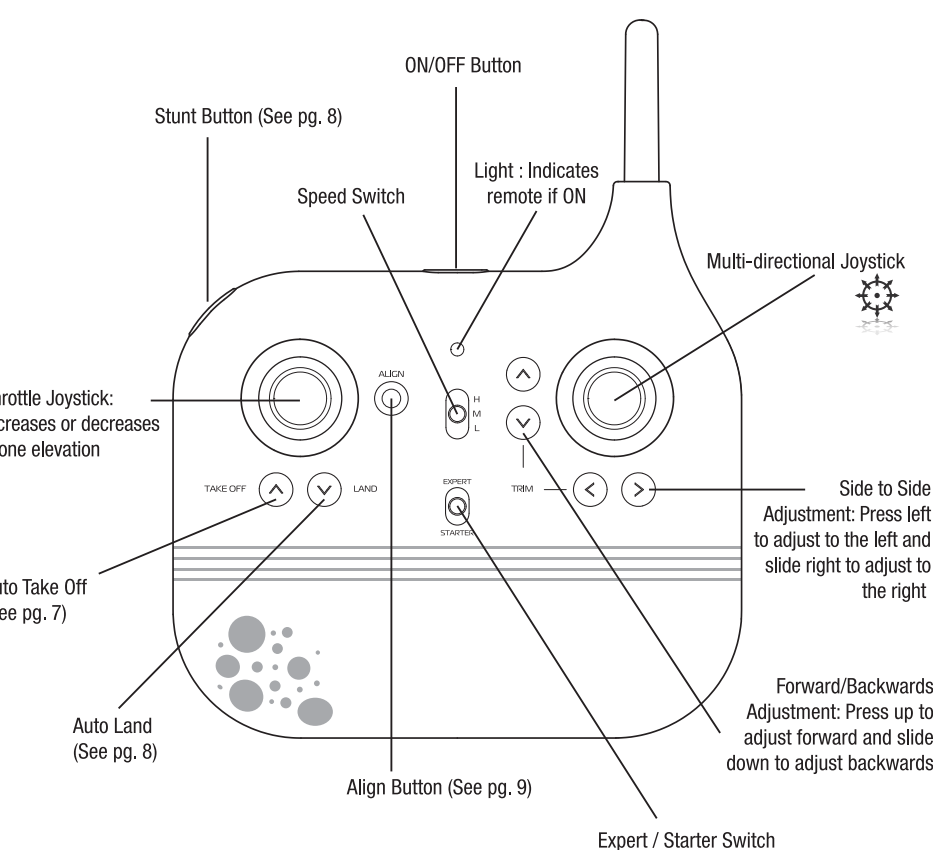


Replacing Propellers



- Only an adult should replace blades. To remove, pull up the blades directly.
- Replace propellers by following the diagram.
- Each blade spins differently. Blade 1 spins counter clockwise and Blade 2 spins clockwise.

Remote Overview



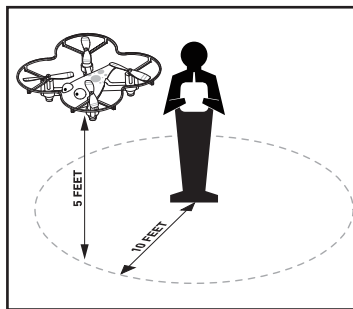
Operating Drone

Step 1 - Pre-Flight Checklist.

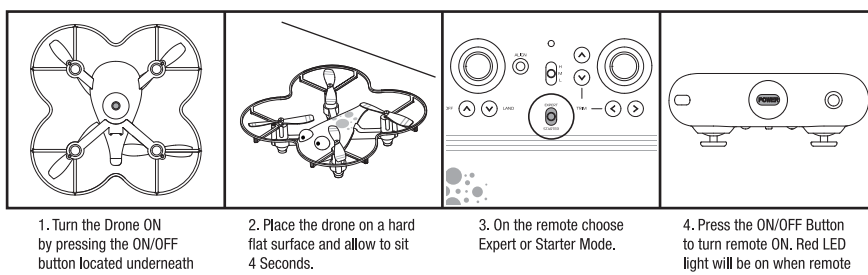
1. Read all warnings and instructions.
2. Install remote batteries, page 4.
3. Charge batteries, page 4.
4. Make sure that the drone and remote are powered off.

Step 2 - Choosing a location.

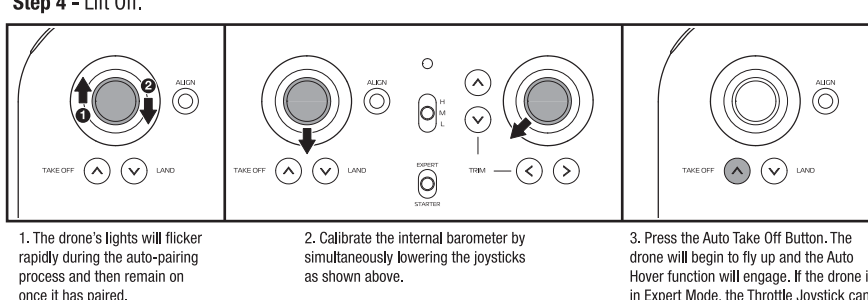
- Drone is designed to be flown indoors and outdoors.
- Always make sure you have enough space to fly drone.
- Always follow warnings, page 2.



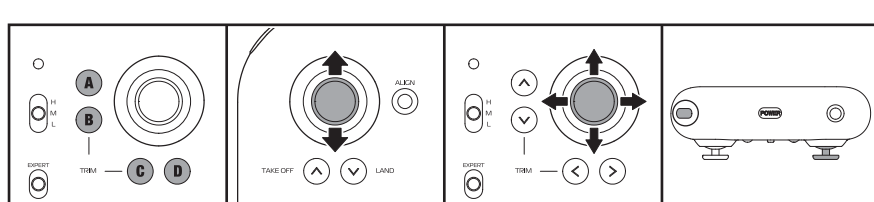
Step 3 - Pre-Flight Prep - Kids and first time flyers should use the Starter Setting, see Starter Mode page.



Step 4 - Lift Off.

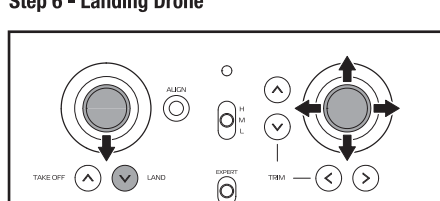


Step 5 - Operating Drone in Flight.

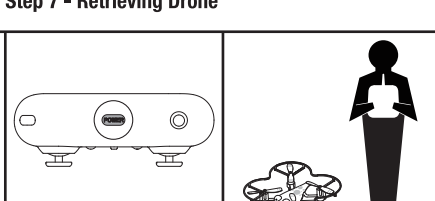


- A.** Drone drifts backwards: Press the Forward Adjustment Button.
- B.** Drone drifts forwards: Press the Backwards Adjustment Button.
- C.** Drone drifts right: Press the Left Adjustment Button.
- D.** Drone drift left: Press the Right Adjustment Button.

Step 6 - Landing Drone

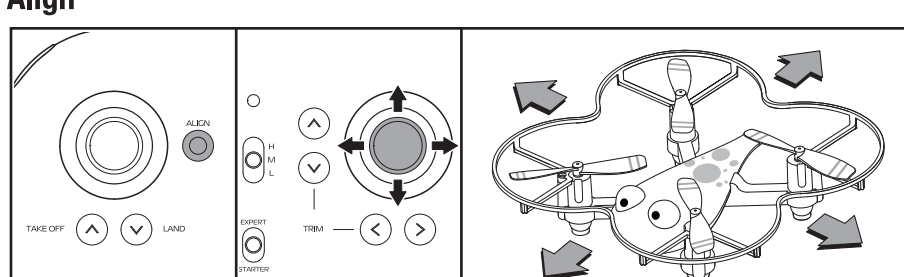


Step 7 - Retrieving Drone



Other Features

Align



Expert and Starter Modes - Starter Mode is recommended for children.

Expert Mode - All features unlocked

Starter Mode:

- Stunt Button is locked.
- Max elevation of 8.5 feet.
- Throttle Joystick is less responsive.
- Speed Switches are disabled.

Tips

- Do not crash drone into sand or dirt. Drone gears may become clogged.
- When first learning to fly, practice lifting off and hovering.
- Stay several feet from walls and buildings.