

---

# FCC Test Report

---

Report No.: AGC07357160802FE03

**FCC ID** : 2AALA1325S  
**APPLICATION PURPOSE** : Original Equipment  
**PRODUCT DESIGNATION** : Camera  
**BRAND NAME** : N/A  
**MODEL NAME** : Refer to Page 5  
**CLIENT** : Shantou City Hengdi Industry Co.,Ltd  
**DATE OF ISSUE** : Sep. 07, 2016  
**STANDARD(S)** : FCC Part 15 Rules  
**TEST PROCEDURE(S)**  
**REPORT VERSION** : V1.0

Attestation of Global Compliance (Shenzhen) Co., Ltd



**CAUTION:**

This report shall not be reproduced except in full without the written permission of the test laboratory and shall not be quoted out of context.



**Report Revise Record**

<b>Report Version</b>	<b>Revise Time</b>	<b>Issued Date</b>	<b>Valid Version</b>	<b>Notes</b>
V1.0	/	Sep. 07, 2016	Valid	Original Report

**TABLE OF CONTENTS**

- 1. VERIFICATION OF CONFORMITY ..... 4**
- 2. GENERAL INFORMATION..... 5**
  - 2.1. PRODUCT DESCRIPTION ..... 5
  - 2.2. TABLE OF CARRIER FREQUENCY..... 6
- 3. MEASUREMENT UNCERTAINTY..... 7**
- 4. DESCRIPTION OF TEST MODES..... 7**
- 5. SYSTEM TEST CONFIGURATION ..... 8**
  - 5.1. CONFIGURATION OF EUT SYSTEM..... 8
  - 5.2. EQUIPMENT USED IN EUT SYSTEM..... 8
  - 5.3. SUMMARY OF TEST RESULTS ..... 8
- 6. TEST FACILITY..... 9**
- 7. RADIATED EMISSION..... 10**
  - 7.1 TEST LIMIT ..... 10
  - 7.2. MEASUREMENT PROCEDURE..... 11
  - 7.3. TEST SETUP ..... 13
  - 7.4. TEST RESULT ..... 14
- 8. BAND EDGE EMISSION..... 19**
  - 8.1. MEASUREMENT PROCEDURE..... 19
  - 8.2 TEST SETUP..... 19
  - 8.3 RADIATED TEST RESULT ..... 19
- 9. 20DB BANDWIDTH ..... 24**
  - 9.1. MEASUREMENT PROCEDURE..... 24
  - 9.2. TEST SET-UP (BLOCK DIAGRAM OF CONFIGURATION)..... 24
  - 9.3. MEASUREMENT RESULTS ..... 24
- APPENDIX A: PHOTOGRAPHS OF TEST SETUP..... 27**
- APPENDIX B: PHOTOGRAPHS OF EUT..... 28**

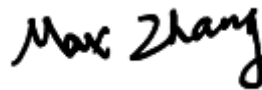
**1. VERIFICATION OF CONFORMITY**

<b>Applicant</b>	Shantou City Hengdi Industry Co.,Ltd.
<b>Address</b>	West Of Ningchuanbei Road And South Of Huancui Road, Guangyi St,Chenghai District,Shantou,Guangdong,China
<b>Manufacturer</b>	Shantou City Hengdi Industry Co.,Ltd.
<b>Address</b>	West Of Ningchuanbei Road And South Of Huancui Road, Guangyi St,Chenghai District,Shantou,Guangdong,China
<b>Product Designation</b>	Camera
<b>Brand Name</b>	N/A
<b>Test Model</b>	1325S
<b>Series Model</b>	1332S,1325,1325W,1325C,1306,1307,1310,1336,1336C,1319,1319C,1331A,1331C,1331S,1331W,1332A,1332C,1332S,1332W,1332V,1332HD,1335A,1335C,1335S,1335W,1327A,1327C,1327S,1327W,1333,1333C,1333W,1334A,1334C,1334S,1334W,1337,1338,1338C,1338W,1314,1339A,1339C,1339S,1339W,1340A,1340C,1340S,1340W,1341A,1341C,1341S,1341W,1342A,1342C,1342S,1342W,1343A,1343C,1343S,1343W,1344A,1344C,1344S,1344W,1345A,1345C,1345S,1345W,1346A,1346C,1346S,1346W,1347A,1347C,1347S,1347W,1348A,1348C,1348S,1348W,ODY-2016BF1,ODY-2016BFG,ODY-1508-Wi-Fi/VR,ODY-1811WIFI/VR,ODY-1811WIFI,ODY-1811FPV,ODY-1940WIFI,ODY-1940-WIFI/VR,ODY-1720NX
<b>Model Difference</b>	All the same except for the model name and appearance.
<b>Date of test</b>	Aug.28, 2016 to Sep.06, 2016
<b>Deviation</b>	None
<b>Condition of Test Sample</b>	Normal
<b>Test Result</b>	Pass
<b>Report Template</b>	AGCRT-US-BR/RF

We hereby certify that:

The above equipment was tested by Dongguan Precise Testing Service Co., Ltd. The test data, data evaluation, test procedures, and equipment configurations shown in this report were made in accordance with the procedures given in ANSI C63.10 (2013) and the energy emitted by the sample EUT tested as described in this report is in compliance with radiated emission limits of FCC Rules Part 15.249.

Tested by



Max Zhang(Zhang Yi)

Sep.07, 2016

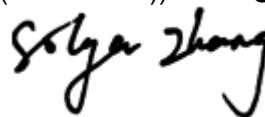
Reviewed by



Bart Xie(Xie Xiaobin))

Sep.07, 2016

Approved by



Solger Zhang(Zhang Hongyi)

Sep.07, 2016

Authorized Officer

## 2. GENERAL INFORMATION

### 2.1. PRODUCT DESCRIPTION

A major technical description of EUT is described as following

<b>Operation Frequency</b>	2.411 GHz to 2.476GHz
<b>Maximum field strength</b>	89.93dBuV/m@3m(AV)
<b>Modulation</b>	GFSK
<b>Number of channels</b>	22
<b>Antenna Gain</b>	2dBi
<b>Antenna Designation</b>	Fixed Antenna (Met 15.203 Antenna requirement)
<b>Hardware Version</b>	SR-TX-H01
<b>Software Version</b>	V1.0
<b>Power Supply</b>	DC 3.7V by battery

**2.2. TABLE OF CARRIER FREQUENCY**

<b>Channel</b>	<b>Frequency (MHz)</b>	<b>Channel</b>	<b>Frequency (MHz)</b>
01	2411	12	2446
02	2414	13	2449
03	2417	14	2452
04	2420	15	2455
05	2423	16	2458
06	2426	17	2461
07	2429	18	2464
08	2434	19	2467
09	2437	20	2470
10	2440	21	2473
11	2443	22	2476

### 3. MEASUREMENT UNCERTAINTY

The reported uncertainty of measurement  $y \pm U$ , where expanded uncertainty  $U$  is based on a standard uncertainty multiplied by a coverage factor of  $k=2$ , providing a level of confidence of approximately 95 %.

No.	Item	Uncertainty
1	Conducted Emission Test	$\pm 3.18\text{dB}$
2	All emissions, radiated	$\pm 3.91\text{dB}$
3	Temperature	$\pm 0.5^\circ\text{C}$
4	Humidity	$\pm 2\%$

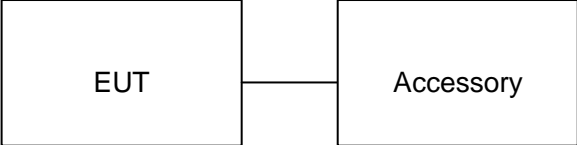
### 4. DESCRIPTION OF TEST MODES

NO.	TEST MODE DESCRIPTION
1	Low channel TX in GFSK modulation
2	Middle channel TX in GFSK modulation
3	High channel TX in GFSK modulation
<p>Note:</p> <ol style="list-style-type: none"> <li>All the test modes can be supply by battery, only the result of the worst case was recorded in the report, if no other cases.</li> <li>For Radiated Emission, 3axis were chosen for testing for each applicable mode.</li> </ol>	

**5. SYSTEM TEST CONFIGURATION**

**5.1. CONFIGURATION OF EUT SYSTEM**

Configure 1:



**5.2. EQUIPMENT USED IN EUT SYSTEM**

Item	Equipment	Model No.	ID or Specification	Remark
1	Camera	1325S	2AALA1325S	EUT
2	Quadcopter	1335	N/A	Support

**5.3. SUMMARY OF TEST RESULTS**

FCC RULES	DESCRIPTION OF TEST	RESULT
§15.249	Radiated Emission	Compliant
§15.249	Band Edges	Compliant
§15.215	20dB bandwidth	Compliant



## 6. TEST FACILITY

<b>Site</b>	Dongguan Precise Testing Service Co., Ltd.
<b>Location</b>	Building D, Baoding Technology Park, Guangming Road2, Dongcheng District, Dongguan, Guangdong, China.
<b>FCC Registration No.</b>	371540
<b>Description</b>	The test site is constructed and calibrated to meet the FCC requirements in documents ANSI C63.4:2014.

## ALL TEST EQUIPMENT LIST

Radiated Emission Test Site					
Name of Equipment	Manufacturer	Model Number	Serial Number	Last Calibration	Due Calibration
EMI Test Receiver	Rohde & Schwarz	ESCI	101417	July 3, 2016	July 2, 2017
Trilog Broadband Antenna (25M-1GHz)	SCHWARZBECK	VULB9160	9160-3355	July 3, 2016	July 2, 2017
Signal Amplifier	SCHWARZBECK	BBV 9475	9745-0013	July 3, 2016	July 2, 2017
RF Cable	SCHWARZBECK	AK9515E	96221	July 3, 2016	July 2, 2017
3m Anechoic Chamber	CHENGYU	966	PTS-001	June 3, 2016	June 2, 2017
MULTI-DEVICE Positioning Controller	Max-Full	MF-7802	MF780208339	N/A	N/A
Active loop antenna (9K-30MHz)	Schwarzbeck	FMZB1519	1519-038	June 3, 2016	June 2, 2017
Spectrum analyzer	Agilent	E4407B	MY46185649	June 3, 2016	June 2, 2017
Horn Antenna (1G-18GHz)	SCHWARZBECK	BBHA9120D	9120D-1246	June 3, 2016	June 2, 2017
Horn Ant (18G-40GHz)	Schwarzbeck	BBHA 9170	9170-181	June 3, 2016	June 2, 2017

## 7. RADIATED EMISSION

### 7.1 TEST LIMIT

#### Standard FCC15.249

Fundamental Frequency	Field Strength of Fundamental (millivolts/meter)	Field Strength of Harmonics (microvolts/meter)
900-928MHz	50	500
2400-2483.5MHz	50	500
5725-5875MHz	50	500
24.0-24.25GHz	250	2500

#### Standard FCC 15.209

Frequency (MHz)	Distance Meters	Field Strengths Limit	
		$\mu$ V/m	dB( $\mu$ V)/m
0.009 ~ 0.490	300	2400/F(kHz)	---
0.490 ~ 1.705	30	24000/F(kHz)	---
1.705 ~ 30	30	30	---
30 ~ 88	3	100	40.0
88 ~ 216	3	150	43.5
216 ~ 960	3	200	46.0
960 ~ 1000	3	500	54.0
Above 1000	3	Other:74.0 dB( $\mu$ V)/m (Peak) 54.0 dB( $\mu$ V)/m (Average)	

Remark: (1) Emission level dB $\mu$  V = 20 log Emission level  $\mu$  V/m  
(2) The smaller limit shall apply at the cross point between two frequency bands.  
(3) Distance is the distance in meters between the measuring instrument, antenna and the closest point of any part of the device or system.

## 7.2. MEASUREMENT PROCEDURE

1. The EUT was placed on the top of the turntable 0.8 or 1.5 meter above ground. The phase center of the receiving antenna mounted on the top of a height-variable antenna tower was placed 3 meters far away from the turntable.
2. Power on the EUT and all the supporting units. The turntable was rotated by 360 degrees to determine the position of the highest radiation.
3. The height of the broadband receiving antenna was varied between one meter and four meters above ground to find the maximum emissions field strength of both horizontal and vertical polarization.
4. For each suspected emissions, the antenna tower was scan (from 1 M to 4 M) and then the turntable was rotated (from 0 degree to 360 degrees) to find the maximum reading.
5. Set the test-receiver system to Peak or CISPR quasi-peak Detect Function with specified bandwidth under Maximum Hold Mode.
6. For emissions above 1GHz, use 1MHz VBW and RBW for peak reading. Then 1MHz RBW and 10Hz VBW for average reading in spectrum analyzer. Place the measurement antenna away from each area of the EUT determined to be a source of emissions at the specified measurement distance, while keeping the measurement antenna aimed at the source of emissions at each frequency of significant emissions, with polarization oriented for maximum response. The measurement antenna may have to be higher or lower than the EUT, depending on the radiation pattern of the emission and staying aimed at the emission source for receiving the maximum signal. The final measurement antenna elevation shall be that which maximizes the emissions. The measurement antenna elevation for maximum emissions shall be restricted to a range of heights of from 1 m to 4 m above the ground or reference ground plane.
7. When the radiated emissions limits are expressed in terms of the average value of the emissions, and pulsed operation is employed, the measurement field strength shall be determined by averaging over one complete pulse train, including blanking intervals, as long as the pulse train does not exceed 0.1 seconds. As an alternative (provided the transmitter operates for longer than 0.1 seconds) or in cases where the pulse train exceeds 0.1 seconds, the measured field strength shall be determined from the average absolute voltage during a 0.1 second interval during which the field strength is at its maximum values.
8. If the emissions level of the EUT in peak mode was 3 dB lower than the average limit specified, then testing will be stopped and peak values of EUT will be reported, otherwise, the emissions which do not have 3 dB margin will be repeated one by one using the quasi-peak method for below 1GHz.
9. For testing above 1GHz, the emissions level of the EUT in peak mode was lower than average limit (that means the emissions level in peak mode also complies with the limit in average mode), then testing will be stopped and peak values of EUT will be reported, otherwise, the emissions will be measured in average mode again and reported.
10. In case the emission is lower than 30MHz, loop antenna has to be used for measurement and the recorded data should be QP measured by receiver. High - Low scan is not required in this case.

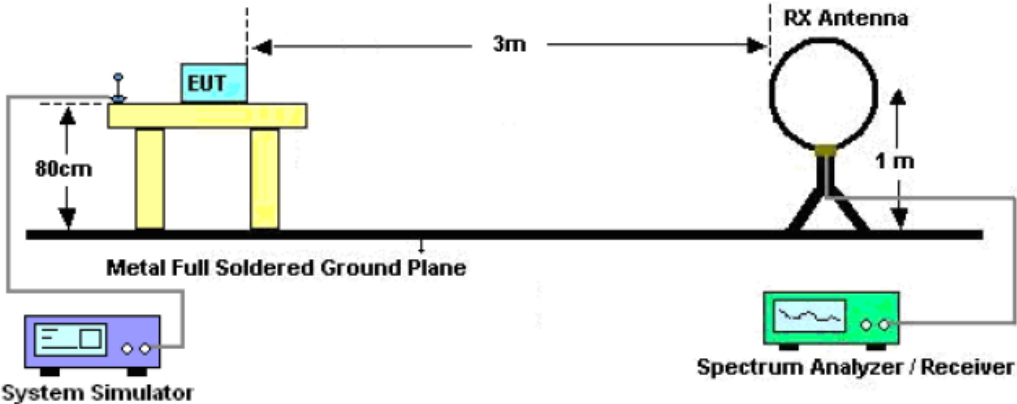
The following table is the setting of spectrum analyzer and receiver.

<b>Spectrum Parameter</b>	<b>Setting</b>
Start ~Stop Frequency	9KHz~150KHz/RB 200Hz for QP
Start ~Stop Frequency	150KHz~30MHz/RB 9KHz for QP
Start ~Stop Frequency	30MHz~1000MHz/RB 120KHz for QP
Start ~Stop Frequency	1GHz~26.5GHz 1MHz/1MHz for Peak, 1MHz/10Hz for Average

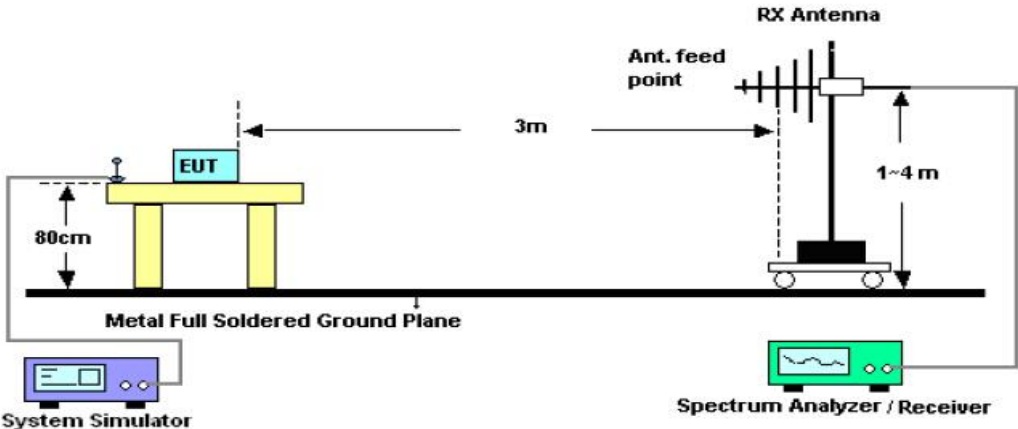
<b>Receiver Parameter</b>	<b>Setting</b>
Start ~Stop Frequency	9KHz~150KHz/RB 200Hz for QP
Start ~Stop Frequency	150KHz~30MHz/RB 9KHz for QP
Start ~Stop Frequency	30MHz~1000MHz/RB 120KHz for QP

7.3. TEST SETUP

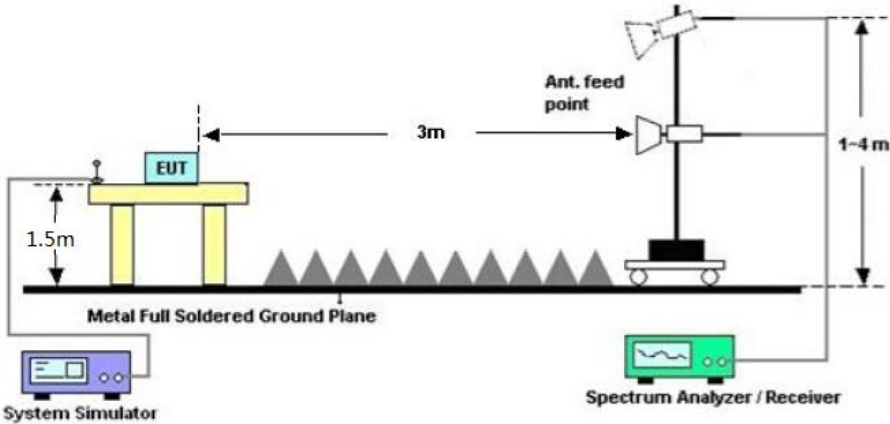
Radiated Emission Test-Setup Frequency Below 30MHz



RADIATED EMISSION TEST SETUP 30MHz-1000MHz



RADIATED EMISSION TEST SETUP ABOVE 1000MHz



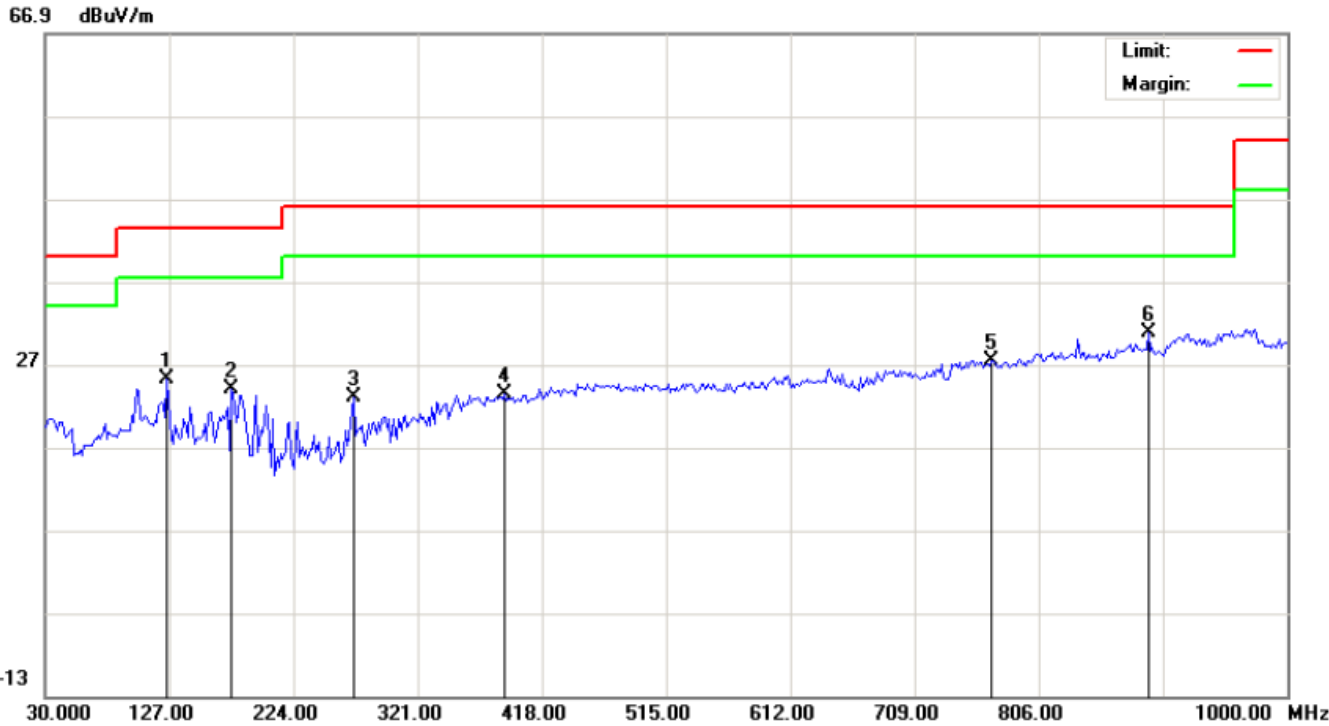
**7.4. TEST RESULT**

**RADIATED EMISSION BELOW 30MHZ**

No emission found between lowest internal used/generated frequencies to 30MHz.

**RADIATED EMISSION 30MHz- 1GHZ**

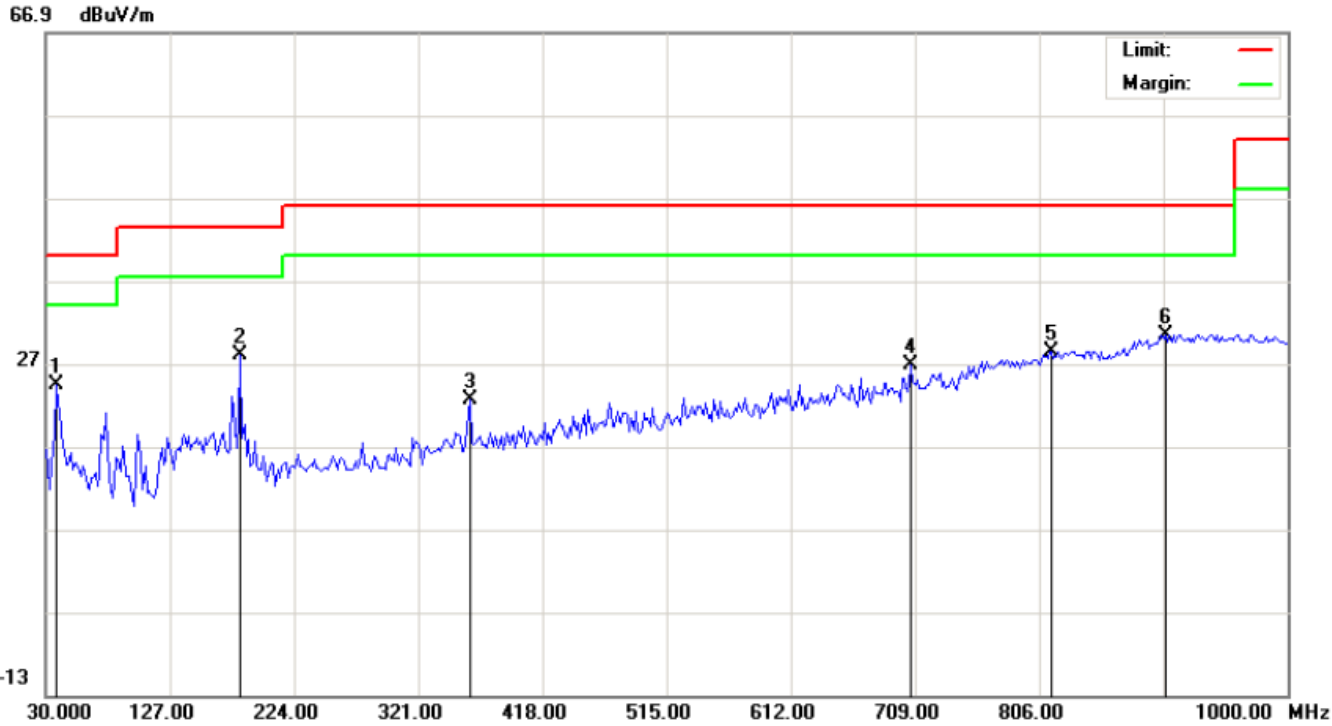
EUT :	Camera	Model Name. :	1325S
Temperature :	20 °C	Relative Humidity :	48%
Pressure :	1010 hPa	Test Voltage :	DC3.7V
Test Mode :	Mode 1	Polarization :	Horizontal



No.	Mk	Freq.	Reading	Factor	Measurement	Limit	Over	Detector	Antenna Height	Table Degree	Comment
		MHz	dBuV	dB/m	dBuV/m	dBuV/m	dB		cm	degree	
1		125.3833	10.80	14.49	25.29	43.50	-18.21	peak			
2		175.5000	9.26	14.82	24.08	43.50	-19.42	peak			
3		270.8833	7.74	15.26	23.00	46.00	-23.00	peak			
4		388.9000	4.32	19.03	23.35	46.00	-22.65	peak			
5		768.8167	0.30	27.18	27.48	46.00	-18.52	peak			
6	*	891.6833	2.59	28.25	30.84	46.00	-15.16	peak			

**RESULT: PASS**

EUT :	Camera	Model Name. :	1325S
Temperature :	20 °C	Relative Humidity :	48%
Pressure :	1010 hPa	Test Voltage :	DC3.7V
Test Mode :	Mode 1	Polarization :	Vertical



No.	Mk	Freq.	Reading	Factor	Measurement	Limit	Over	Detector	Antenna Height	Table Degree	Comment
		MHz	dBuV	dB/m	dBuV/m	dBuV/m	dB		cm	degree	
1		38.0833	18.11	6.39	24.50	40.00	-15.50	peak			
2	*	181.9667	14.48	13.57	28.05	43.50	-15.45	peak			
3		361.4166	3.73	18.82	22.55	46.00	-23.45	peak			
4		705.7667	1.38	25.36	26.74	46.00	-19.26	peak			
5		815.7000	1.12	27.32	28.44	46.00	-17.56	peak			
6		904.6167	1.71	28.74	30.45	46.00	-15.55	peak			

**RESULT: PASS**

**Note:**

Factor=Antenna Factor + Cable loss, Margin=Result-Limit.

The “Factor” value can be calculated automatically by software of measurement system.

The mode 1 is the worst case, and only the data of the worst case recorded in this test report.

**RADIATED EMISSION ABOVE 1GHZ**

EUT :	Camera	Model Name. :	1325S
Temperature :	20 °C	Relative Humidity :	48%
Pressure :	1010 hPa	Test Voltage :	DC3.7V
Test Mode :	Mode 1	Polarization :	Horizontal

Frequency (MHz)	Meter Reading (dBµV)	Factor (dB)	Emission Level (dBµV/m)	Limits (dBµV/m)	Margin (dB)	Value Type
2411.013	103.41	-9.37	94.04	114	-19.96	peak
2411.013	98.25	-9.37	88.88	94	-5.12	AVG
4822.026	48.12	3.74	51.86	74	-22.14	peak
4822.026	42.75	3.74	46.49	54	-7.51	AVG
7233.039	43.54	8.14	51.68	74	-22.32	peak
7233.039	38.16	8.14	46.3	54	-7.7	AVG

Remark:  
Factor = Antenna Factor + Cable Loss – Pre-amplifier.

EUT :	Camera	Model Name. :	1325S
Temperature :	20 °C	Relative Humidity :	48%
Pressure :	1010 hPa	Test Voltage :	DC3.7V
Test Mode :	Mode 1	Polarization :	Vertical

Frequency (MHz)	Meter Reading (dBµV)	Factor (dB)	Emission Level (dBµV/m)	Limits (dBµV/m)	Margin (dB)	Value Type
2411.013	100.15	-9.37	90.78	114	-23.22	peak
2411.013	95.32	-9.37	85.95	94	-8.05	AVG
4822.026	47.25	3.74	50.99	74	-23.01	peak
4822.026	41.67	3.74	45.41	54	-8.59	AVG
7233.039	43.15	8.14	51.29	74	-22.71	peak
7233.039	38.24	8.14	46.38	54	-7.62	AVG

Remark:  
Factor = Antenna Factor + Cable Loss – Pre-amplifier.



EUT :	Camera	Model Name. :	1325S
Temperature :	20 °C	Relative Humidity :	48%
Pressure :	1010 hPa	Test Voltage :	DC3.7V
Test Mode :	Mode 2	Polarization :	Horizontal

Frequency (MHz)	Meter Reading (dBµV)	Factor (dB)	Emission Level (dBµV/m)	Limits (dBµV/m)	Margin (dB)	Value Type
2434.016	103.12	-9.63	93.49	114	-20.51	peak
2434.016	97.44	-9.63	87.81	94	-6.19	AVG
4868.032	47.85	3.76	51.61	74	-22.39	peak
4868.032	42.14	3.76	45.9	54	-8.1	AVG
7302.048	43.74	8.17	51.91	74	-22.09	peak
7302.048	38.33	8.17	46.5	54	-7.5	AVG

Remark:

Factor = Antenna Factor + Cable Loss – Pre-amplifier.

EUT :	Camera	Model Name. :	1325S
Temperature :	20 °C	Relative Humidity :	48%
Pressure :	1010 hPa	Test Voltage :	DC3.7V
Test Mode :	Mode 2	Polarization :	Vertical

Frequency (MHz)	Meter Reading (dBµV)	Factor (dB)	Emission Level (dBµV/m)	Limits (dBµV/m)	Margin (dB)	Value Type
2434.016	99.87	-9.63	90.24	114	-23.76	peak
2434.016	94.54	-9.63	84.91	94	-9.09	AVG
4868.032	47.14	3.76	50.9	74	-23.1	peak
4868.032	41.85	3.76	45.61	54	-8.39	AVG
7302.048	42.71	8.17	50.88	74	-23.12	peak
7302.048	37.69	8.17	45.86	54	-8.14	AVG

Remark:

Factor = Antenna Factor + Cable Loss – Pre-amplifier.

EUT :	Camera	Model Name. :	1325S
Temperature :	20 °C	Relative Humidity :	48%
Pressure :	1010 hPa	Test Voltage :	DC3.7V
Test Mode :	Mode 3	Polarization :	Horizontal

Frequency (MHz)	Meter Reading (dBµV)	Factor (dB)	Emission Level (dBµV/m)	Limits (dBµV/m)	Margin (dB)	Value Type
2476.021	104.47	-9.61	94.86	114	-19.14	peak
2476.021	99.54	-9.61	89.93	94	-4.07	AVG
4952.042	47.17	3.83	51	74	-23	peak
4952.042	42.07	3.83	45.9	54	-8.1	AVG
7428.063	44.75	8.21	52.96	74	-21.04	peak
7428.063	39.15	8.21	47.36	54	-6.64	AVG
Remark:						
Factor = Antenna Factor + Cable Loss – Pre-amplifier.						

EUT :	Camera	Model Name. :	1325S
Temperature :	20 °C	Relative Humidity :	48%
Pressure :	1010 hPa	Test Voltage :	DC3.7V
Test Mode :	Mode 3	Polarization :	Vertical

Frequency (MHz)	Meter Reading (dBµV)	Factor (dB)	Emission Level (dBµV/m)	Limits (dBµV/m)	Margin (dB)	Value Type
2476.021	101.33	-9.61	91.72	114	-22.28	peak
2476.021	96.74	-9.61	87.13	94	-6.87	AVG
4952.042	46.57	3.83	50.4	74	-23.6	peak
4952.042	41.53	3.83	45.36	54	-8.64	AVG
7428.063	43.17	8.21	51.38	74	-22.62	peak
7428.063	38.44	8.21	46.65	54	-7.35	AVG
Remark:						
Factor = Antenna Factor + Cable Loss – Pre-amplifier.						

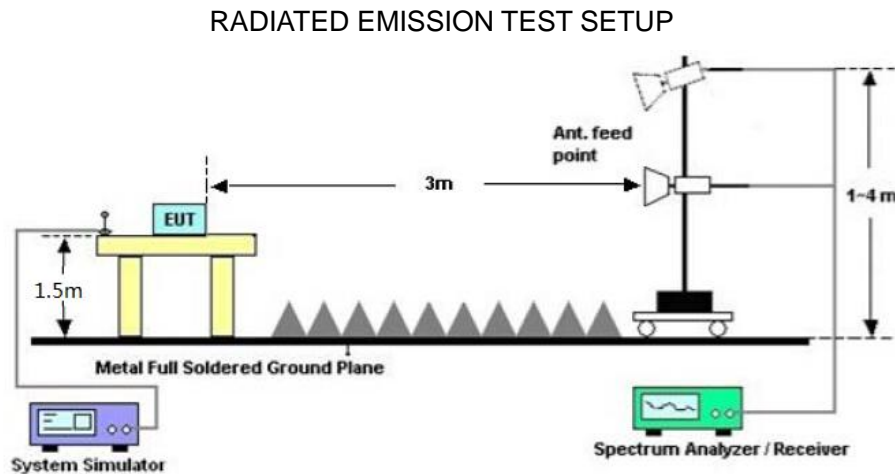
**Note:** Other emissions from 8G to 25 GHz are considered as ambient noise. No recording in the test report.  
Factor=Antenna Factor + Cable loss - Amplifier gain, Margin=Measurement-Limit.  
The “Factor” value can be calculated automatically by software of measurement system.

## 8. BAND EDGE EMISSION

### 8.1. MEASUREMENT PROCEDURE

1. The lowest or highest channels are tested to verify the largest transmission and spurious emissions power at the continuous transmission mode.
2. Max hold the trace of the setp 1,and the EUT operates at hopping-on test mode to verify the largest spurious emissions power.
3. Set the spectrum analyzer in the following setting in order to capture the lower and upper band-edges of the emission: (a) PEAK: RBW=VBW=1MHz / Sweep=AUTO  
(b) AVERAGE: RBW=1MHz ; VBW=1/on time(1KHz) / Sweep=AUTO

### 8.2 TEST SETUP



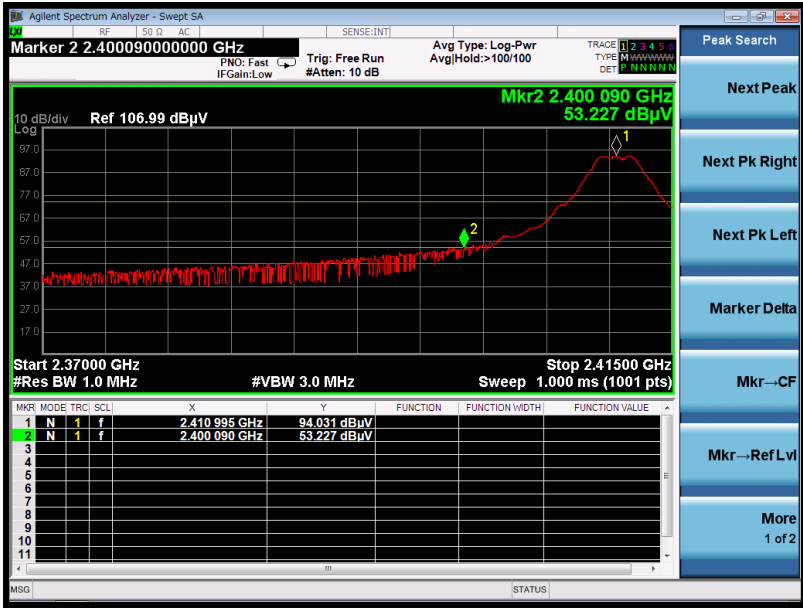
### 8.3 RADIATED TEST RESULT

**Note:**

1. Factor=Antenna Factor + Cable loss - Amplifier gain. Field Strength=Factor + Reading level
2. The factor had been edited in the "Input Correction" of the Spectrum Analyzer. So the Amplitude of test plots is equal to Reading level plus the Factor in dB. Use the A dB( $\mu$ V) to represent the Amplitude. Use the F dB( $\mu$ V/m) to represent the Field Strength. So A=F.

EUT :	Camera	Model Name. :	1325S
Temperature :	20 °C	Relative Humidity :	48%
Pressure :	1010 hPa	Test Voltage :	DC3.7V
Test Mode :	Mode 1	Polarization :	Horizontal

PK Value

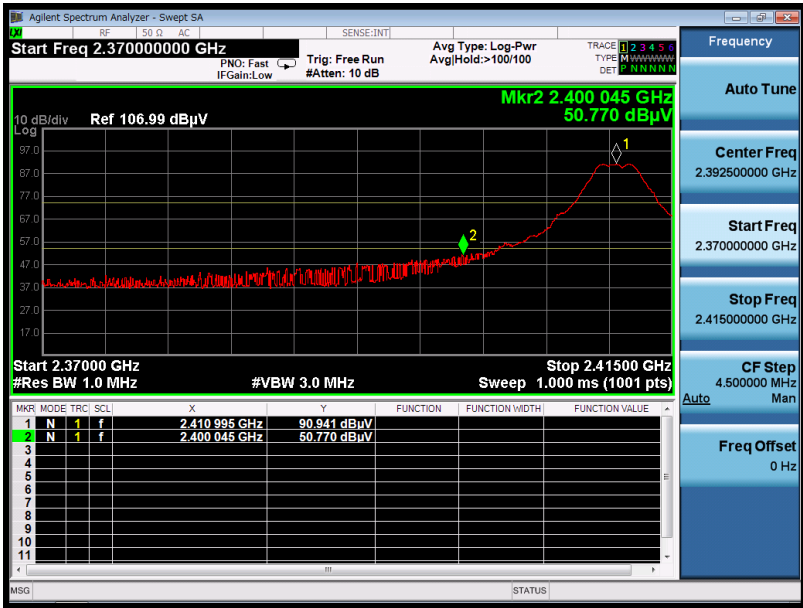


AV Value



EUT :	Camera	Model Name. :	1325S
Temperature :	20 °C	Relative Humidity :	48%
Pressure :	1010 hPa	Test Voltage :	DC3.7V
Test Mode :	Mode 1	Polarization :	Vertical

PK Value

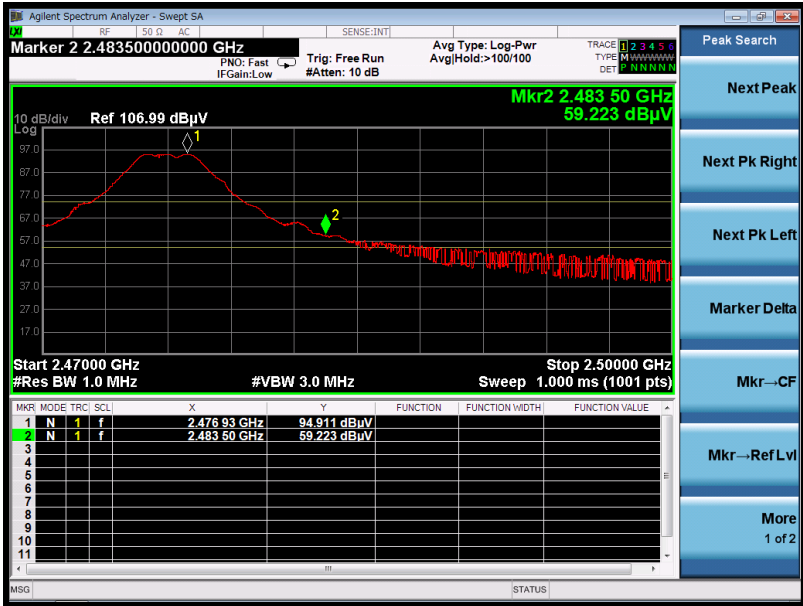


AV Value

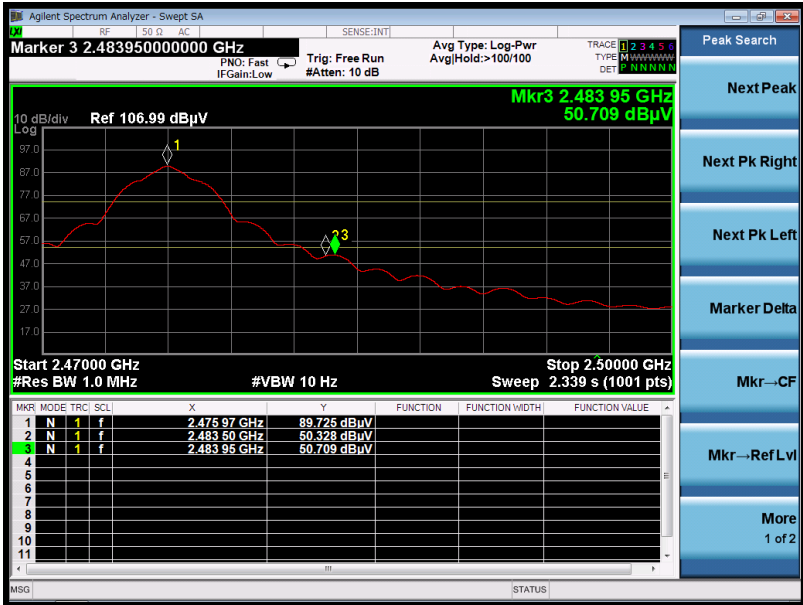


EUT :	Camera	Model Name. :	1325S
Temperature :	20 °C	Relative Humidity :	48%
Pressure :	1010 hPa	Test Voltage :	DC3.7V
Test Mode :	Mode 3	Polarization :	Horizontal

PK Value

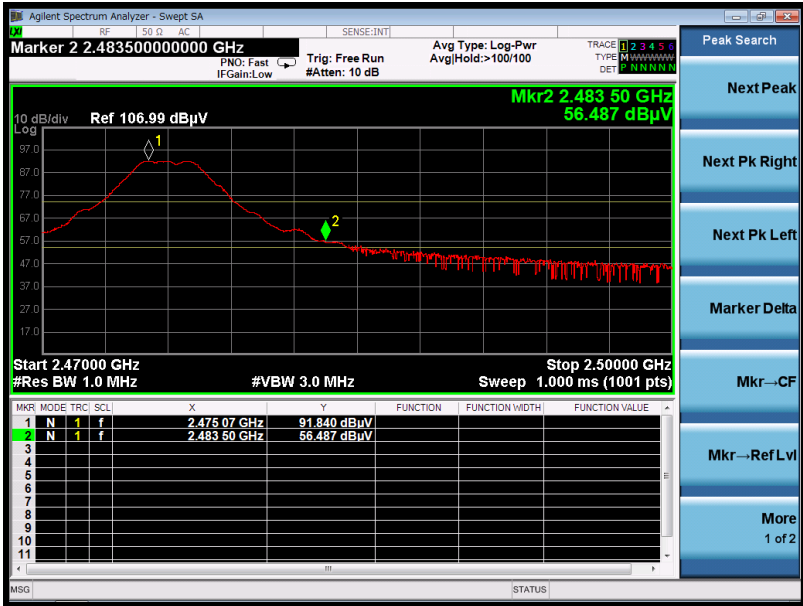


AV Value

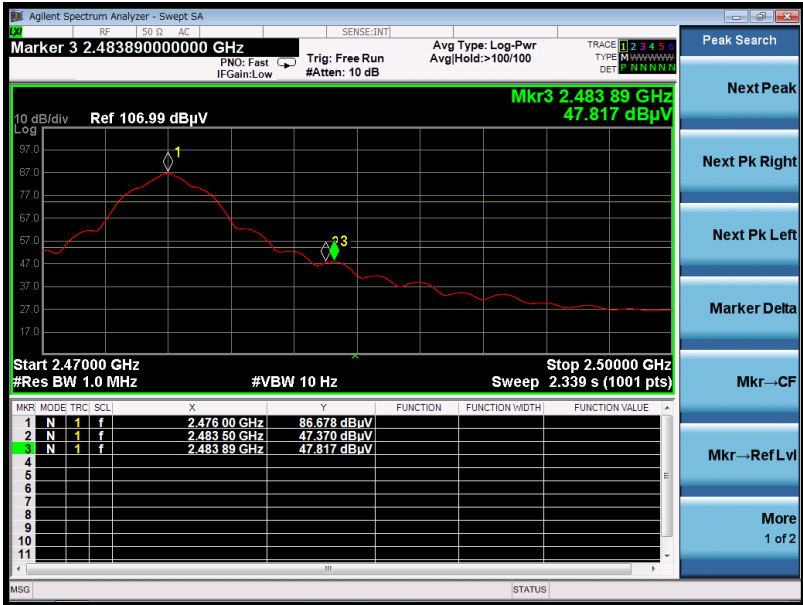


EUT :	Camera	Model Name. :	1325S
Temperature :	20 °C	Relative Humidity :	48%
Pressure :	1010 hPa	Test Voltage :	DC3.7V
Test Mode :	Mode 3	Polarization :	Vertical

PK Value



AV Value



Note:

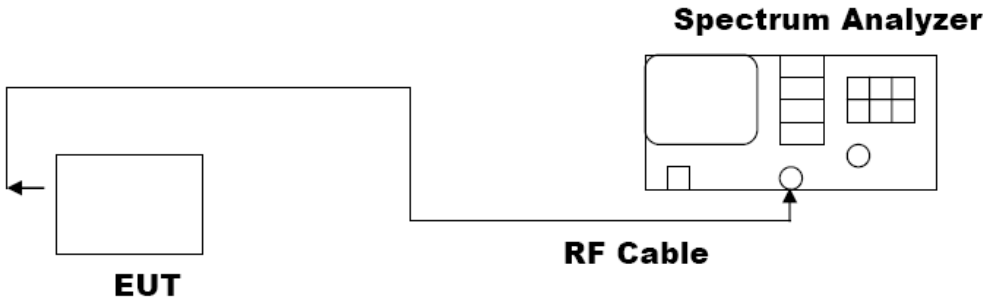
Factor=Antenna Factor + Cable loss - Amplifier gain, Over=Measure-Limit.  
 The "Factor" value can be calculated automatically by software of measurement system.

**9. 20DB BANDWIDTH**

**9.1. MEASUREMENT PROCEDURE**

1. Connect EUT RF output port to the Spectrum Analyzer through an RF attenuator
2. Set the EUT Work on the top, the middle and the bottom operation frequency individually.
3. Set SPA Centre Frequency = Operation Frequency, RBW= 1% of SPAN, VBW  $\geq 3 \times$  RBW.
4. Set SPA Trace 1 Max hold, then View.

**9.2. TEST SET-UP (BLOCK DIAGRAM OF CONFIGURATION)**



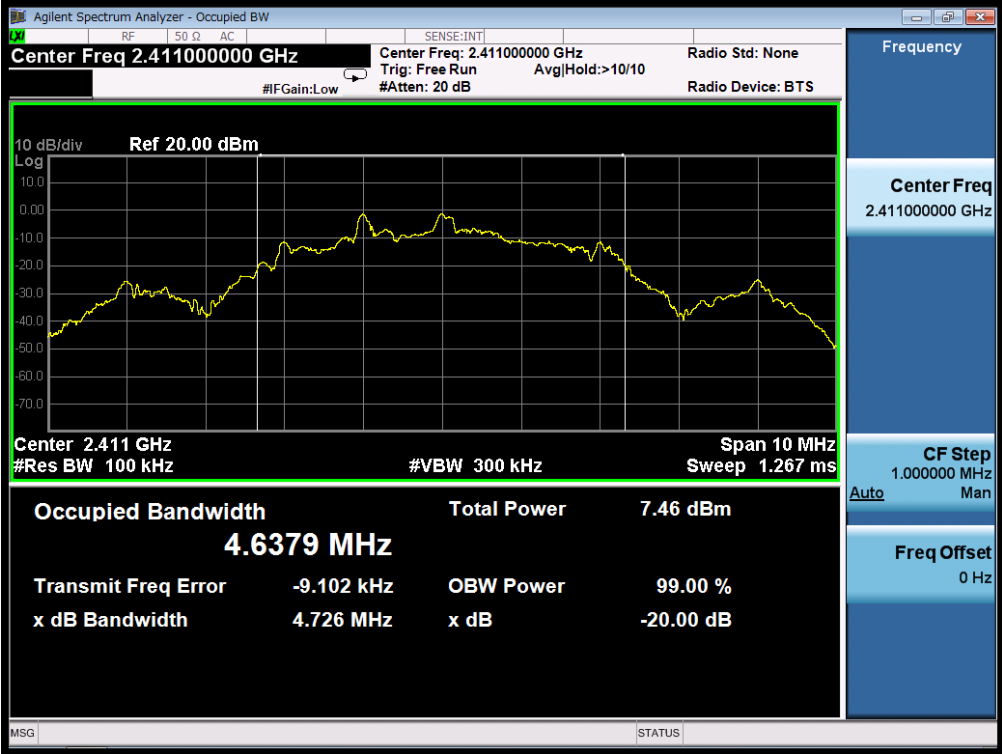
**9.3. MEASUREMENT RESULTS**

<b>TEST ITEM</b>	20DB BANDWIDTH
<b>TEST MODE</b>	Mode1;Mode2;Mode3

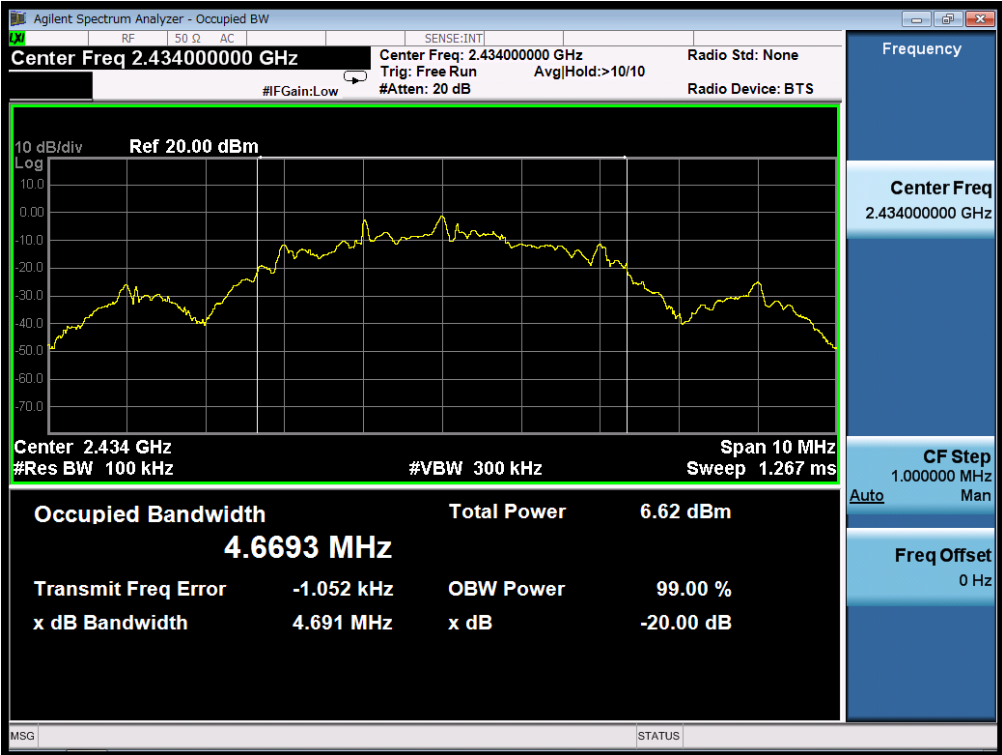
<b>Test Data (MHz)</b>		<b>Criteria</b>
Low Channel	4.726	PASS
Middle Channel	4.691	PASS
High Channel	4.704	PASS



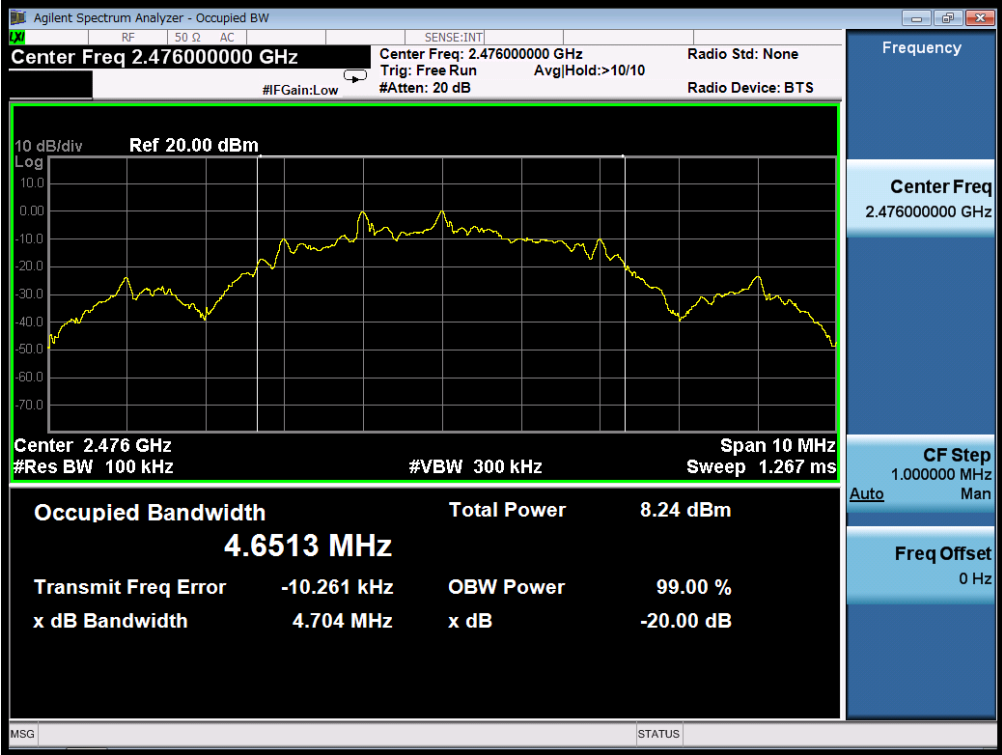
TEST PLOT OF BANDWIDTH FOR LOW CHANNEL



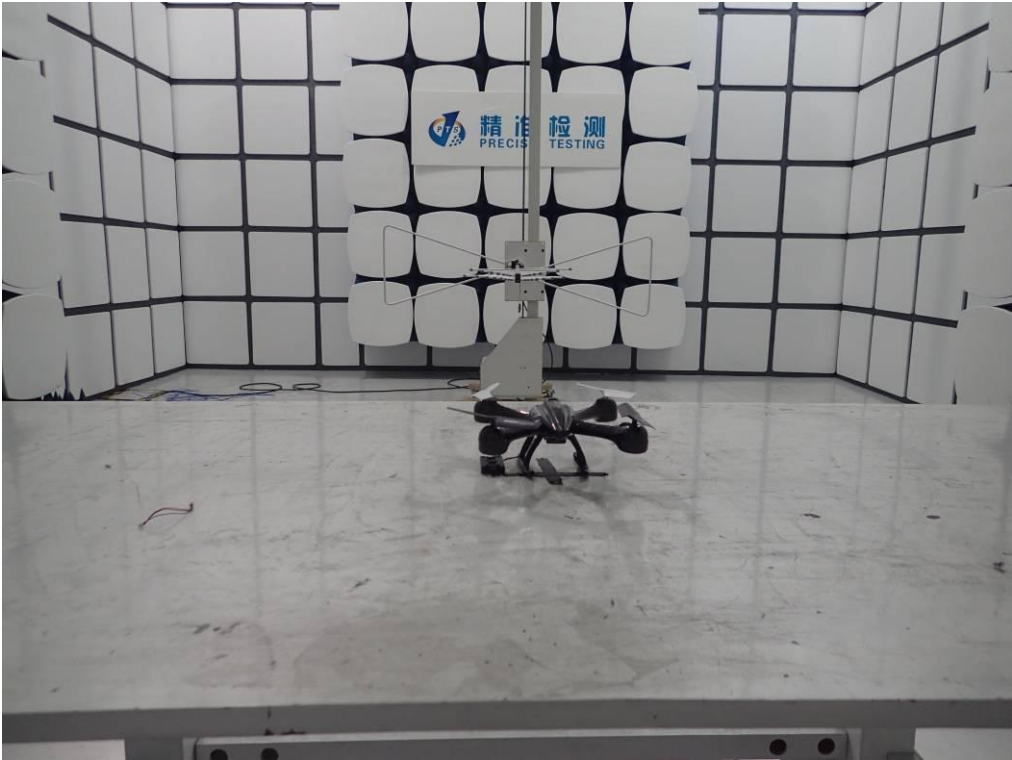
TEST PLOT OF BANDWIDTH FOR MIDDLE CHANNEL



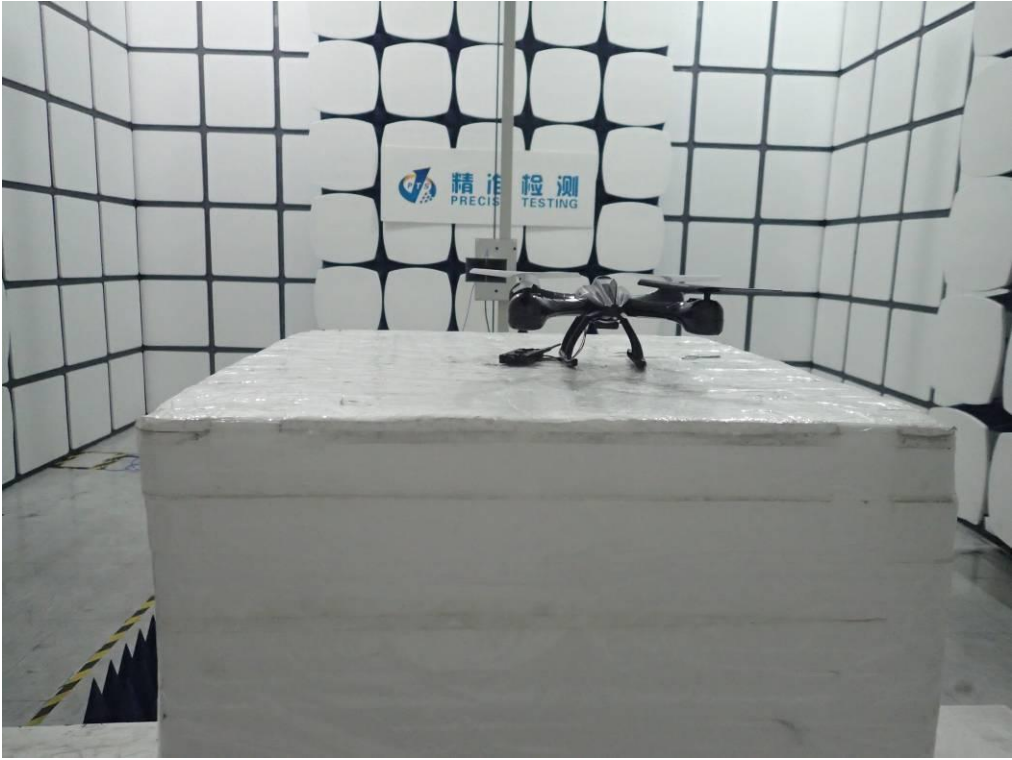
TEST PLOT OF BANDWIDTH FOR HIGH CHANNEL



**APPENDIX A: PHOTOGRAPHS OF TEST SETUP**  
**RADIATED EMISSION TEST SETUP BELOW 1GHz**

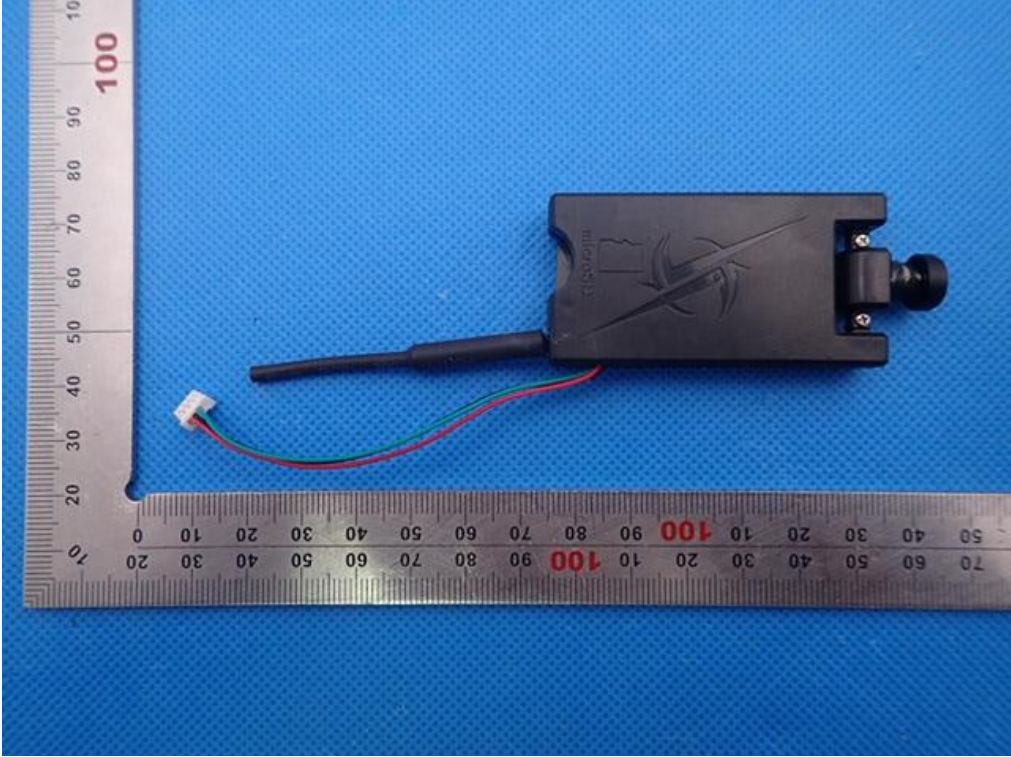


**RADIATED EMISSION TEST SETUP ABOVE 1GHz**



**APPENDIX B: PHOTOGRAPHS OF EUT**

TOP VIEW OF EUT



BOTTOM VIEW OF EUT



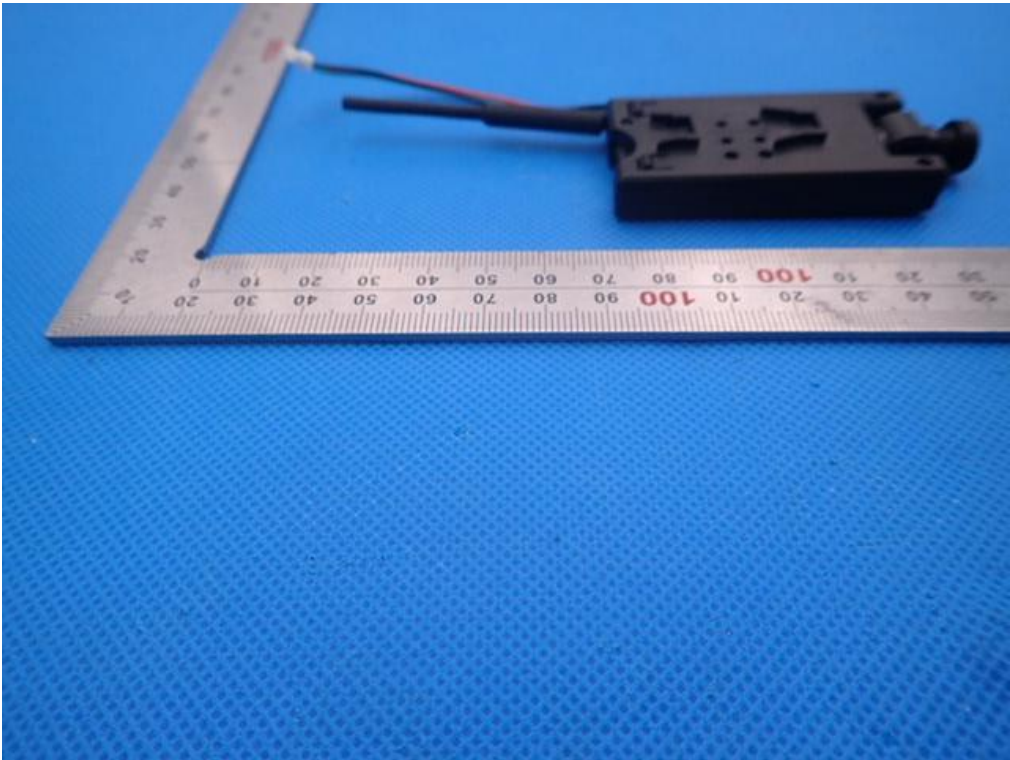
FRONT VIEW OF EUT



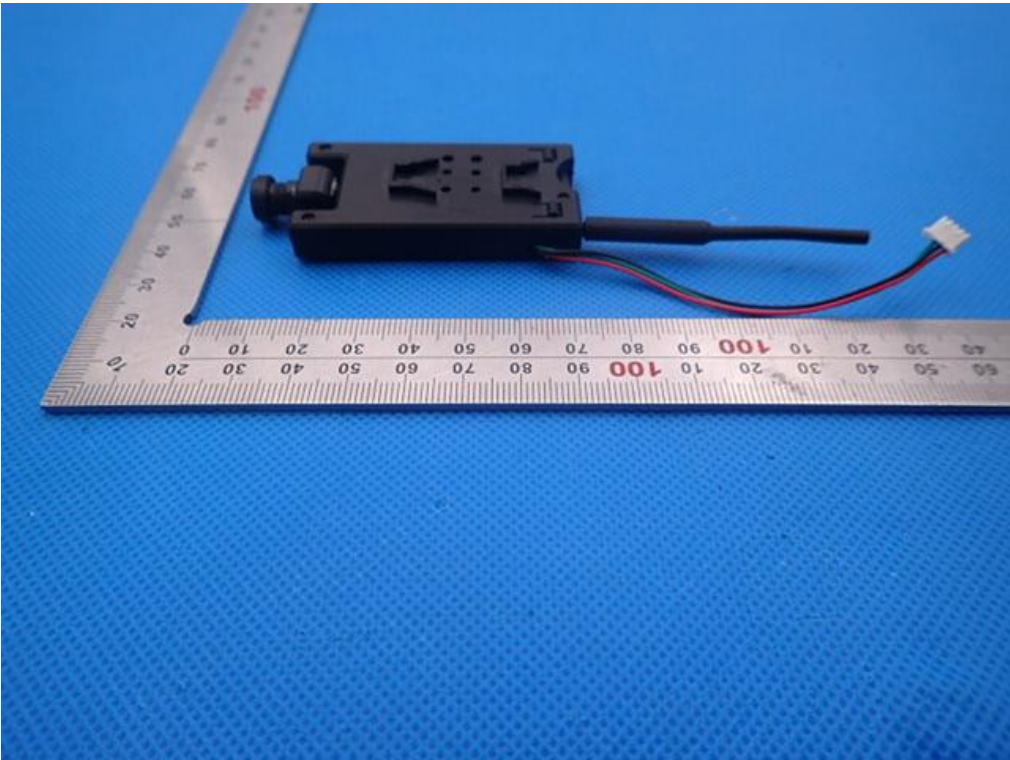
BACK VIEW OF EUT



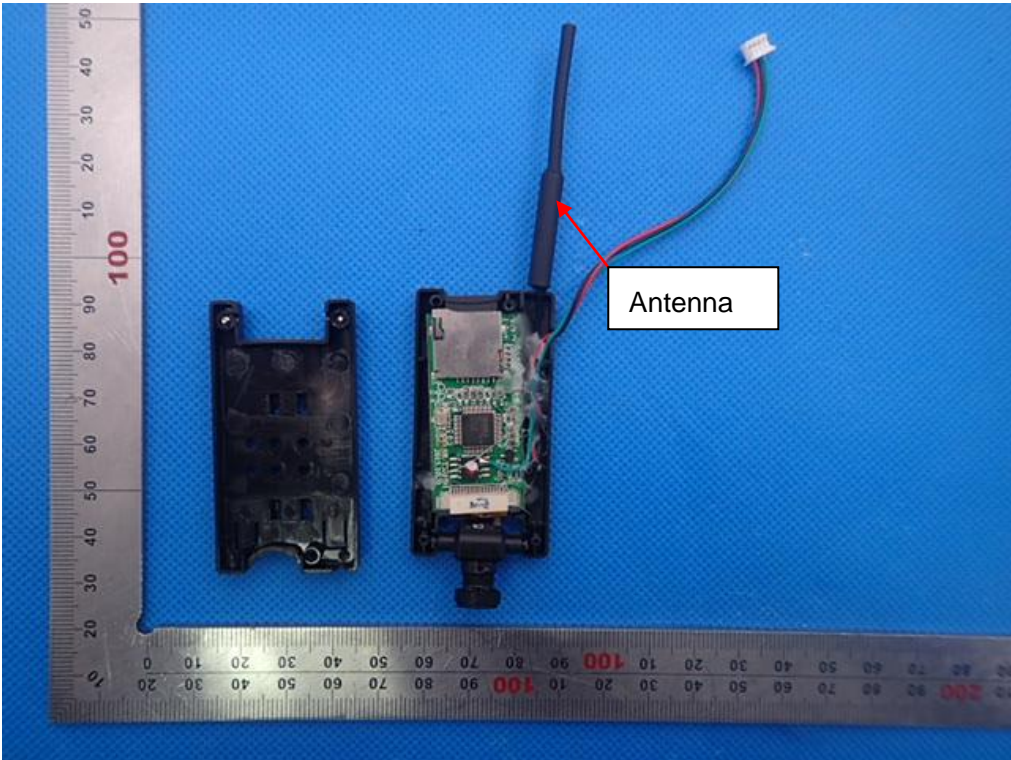
LEFT VIEW OF EUT



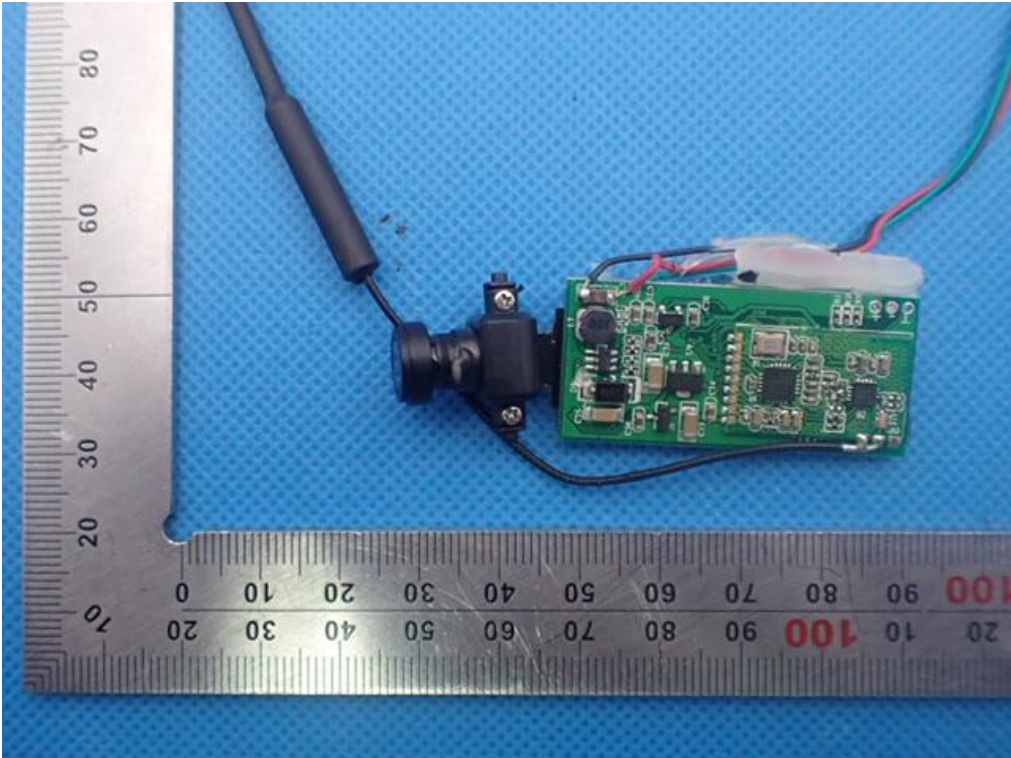
RIGHT VIEW OF EUT



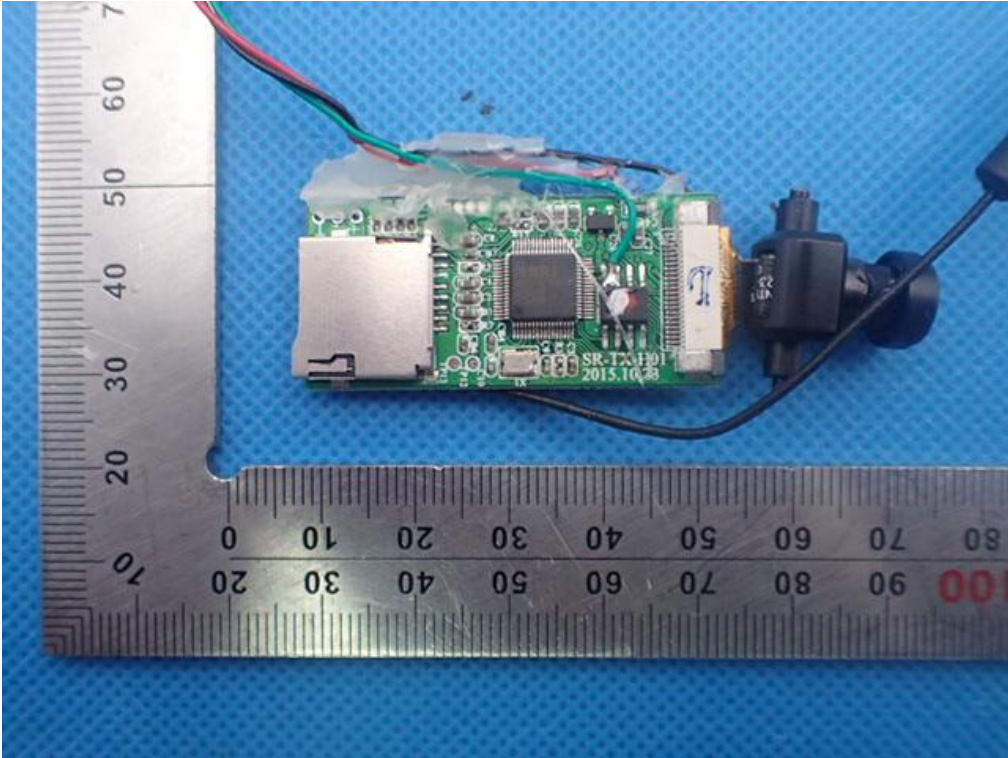
OPEN VIEW OF EUT



INTERNAL VIEW OF EUT-1



INTERNAL VIEW OF EUT-2



----END OF REPORT----