

### FCC REPORT

**Applicant:** Ecovacs Robotics Co., Ltd.  
**Address of Applicant:** No. 18 You Xiang Road, Wuzhong District, Suzhou City, Jiangsu Province, P.R.China  
**Manufacturer:** Ecovacs Robotics Co., Ltd.  
**Address of Manufacturer:** No. 18 You Xiang Road, Wuzhong District, Suzhou City, Jiangsu Province, P.R.China  
**Factory:** SHENZHEN CHUAN QISHENG INDUSTRIAL Co.,LTD  
**Address of Factory:** 3F West,Building No.2, Jiuzhou Industrial Park, Jiazitang Village East Songbai Road, Gongming Street, Guangming New District, Shenzhen City, P.R.China

#### Equipment Under Test (EUT)

**Product Name:** Remote control  
**Model No.:** RC1712  
**FCC ID:** 2AAL3-RC1712  
**Applicable standards:** FCC CFR Title 47 Part 15 Subpart C Section 15.249:2017  
**Date of sample receipt:** January 08, 2018  
**Date of Test:** January 09-11, 2018  
**Date of report issued:** January 12, 2018  
**Test Result :** PASS \*

\* In the configuration tested, the EUT complied with the standards specified above.

Authorized Signature:



**Robinson Lo**

**Laboratory Manager**

This results shown in this test report refer only to the sample(s) tested, this test report cannot be reproduced, except in full, without prior written permission of the company. The report would be invalid without specific stamp of test institute and the signatures of compiler and approver.

## 2 Version

Version No.	Date	Description
00	January 12, 2018	Original

Prepared By:

*Bill. Yuan*

Date:

January 12, 2018

Project Engineer

Check By:

*Andy. Wu*

Date:

January 12, 2018

Reviewer

## 3 Contents

	Page
1 COVER PAGE.....	1
2 VERSION.....	2
3 CONTENTS.....	3
4 TEST SUMMARY.....	4
4.1 MEASUREMENT UNCERTAINTY.....	4
5 GENERAL INFORMATION.....	5
5.1 GENERAL DESCRIPTION OF EUT.....	5
5.2 TEST MODE.....	6
5.3 DESCRIPTION OF SUPPORT UNITS.....	6
5.4 TEST FACILITY.....	6
5.5 TEST LOCATION.....	6
5.6 OTHER INFORMATION REQUESTED BY THE CUSTOMER.....	6
5.7 ADDITIONAL INSTRUCTIONS.....	7
6 TEST INSTRUMENTS LIST.....	8
7 TEST RESULTS AND MEASUREMENT DATA.....	9
7.1 ANTENNA REQUIREMENT.....	9
7.2 RADIATED EMISSION METHOD.....	10
7.2.1 Field Strength of The Fundamental Signal.....	12
7.2.2 Spurious emissions.....	13
7.2.3 Bandedge emissions.....	17
7.3 20dB OCCUPY BANDWIDTH.....	21
8 TEST SETUP PHOTO.....	22
9 EUT CONSTRUCTIONAL DETAILS.....	23

## 4 Test Summary

Test Item	Section in CFR 47	Result
Antenna requirement	15.203	Pass
AC Power Line Conducted Emission	15.207	N/A
Field strength of the fundamental signal	15.249 (a)	Pass
Spurious emissions	15.249 (a) (d)/15.209	Pass
Band edge	15.249 (d)/15.205	Pass
20dB Occupied Bandwidth	15.215 (c)	Pass

*Pass: The EUT complies with the essential requirements in the standard.*

*Remark: Test according to ANSI C63.10: 2013 and ANSI C63.4: 2014.*

*N/A: Not applicable*

### 4.1 Measurement Uncertainty

Test Item	Frequency Range	Measurement Uncertainty	Notes
Radiated Emission	9kHz ~ 30MHz	± 4.34dB	(1)
Radiated Emission	30MHz ~ 1000MHz	± 4.24dB	(1)
Radiated Emission	1GHz ~ 26.5GHz	± 4.68dB	(1)
AC Power Line Conducted Emission	0.15MHz ~ 30MHz	± 3.45dB	(1)

Note (1): The measurement uncertainty is for coverage factor of k=2 and a level of confidence of 95%.

## 5 General Information

### 5.1 General Description of EUT

Product Name:	Remote control
Sample(s) Status:	Engineer sample
Quantity of tested samples	1
Tested Sample(s) ID:	GTS201712000166-1
Model No.:	RC1712
Hardware Version:	V1.0
Software Version:	V1.2
Operation Frequency:	2437MHz
Channel numbers:	1
Modulation type:	GFSK
Antenna Type:	PCB antenna
Antenna gain:	1.5 dBi(declare by Applicant)
Power supply:	DC 3.3V

Operation Frequency each of channel	
Channel	Frequency
1	2437MHz

#### Test Frequency:

Channel	Frequency
1	2437MHz

## 5.2 Test mode

Transmitting mode	Keep the EUT in continuously transmitting mode.
<i>Remark: During the test, the dutycycle &gt;98%, the test voltage was tuned from 85% to 115% of the nominal rated supply voltage, and found that the worst case was under the nominal rated supply condition. So the report just shows that condition's data.</i>	

### Per-test mode.

We have verified the construction and function in typical operation, The EUT was placed on three different polar directions; i.e. X axis, Y axis, Z axis. which was shown in this test report and defined as follows:

Axis	X	Y	Z
Field Strength(dBuV/m)	85.44	86.62	84.29

## 5.3 Description of Support Units

None
------

## 5.4 Test Facility

The test facility is recognized, certified, or accredited by the following organizations:

- **FCC —Registration No.: 381383**

Global United Technology Services Co., Ltd., Shenzhen EMC Laboratory has been registered and fully described in a report filed with the (FCC) Federal Communications Commission. The acceptance letter from the FCC is maintained in files. Registration 381383, Jan. 08, 2018.

- **Industry Canada (IC) —Registration No.: 9079A-2**

The 3m Semi-anechoic chamber of Global United Technology Services Co., Ltd. has been registered by Certification and Engineering Bureau of Industry Canada for radio equipment testing with Registration No.: 9079A-2, August 15, 2016

## 5.5 Test Location

All tests were performed at:
Global United Technology Services Co., Ltd. Address: No. 301-309, 3/F., Jinyuan Business Building, No.2, Laodong Industrial Zone, Xixiang Road, Baoan District, Shenzhen, Guangdong, China 518102 Tel: 0755-27798480 Fax: 0755-27798960

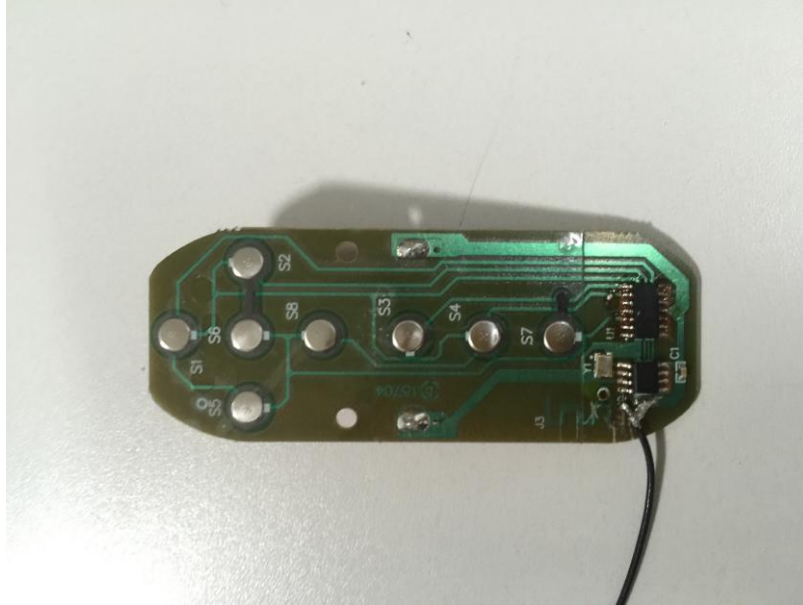
## 5.6 Other Information Requested by the Customer

None.
-------

## 5.7 Additional Instructions

EUT Settings:

Engineering plate fixed transmit.



## 6 Test Instruments list

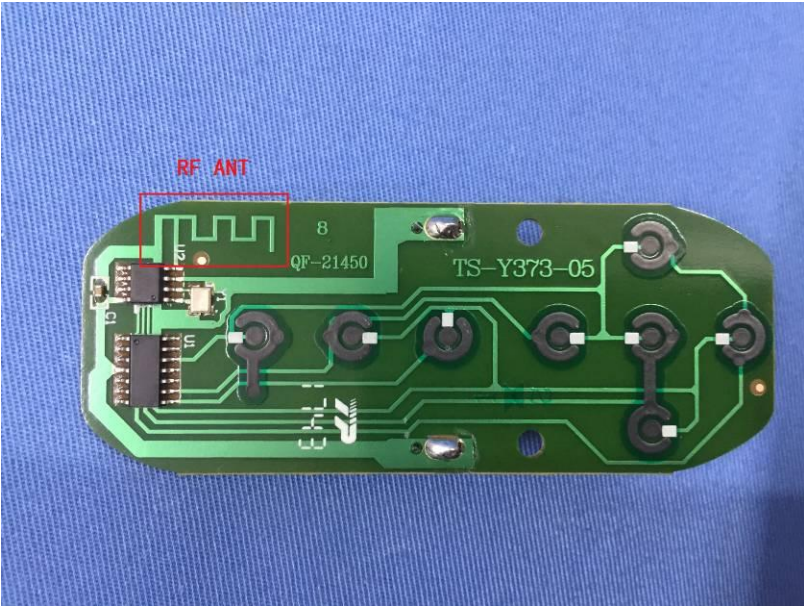
Radiated Emission:						
Item	Test Equipment	Manufacturer	Model No.	Inventory No.	Cal.Date (mm-dd-yy)	Cal.Due date (mm-dd-yy)
1	3m Semi- Anechoic Chamber	ZhongYu Electron	9.2(L)*6.2(W)* 6.4(H)	GTS250	July 03 2015	July 02 2020
2	Control Room	ZhongYu Electron	6.2(L)*2.5(W)* 2.4(H)	GTS251	N/A	N/A
3	Spectrum Analyzer	Agilent	E4440A	GTS533	June 28 2017	June 27 2018
4	EMI Test Receiver	Rohde & Schwarz	ESU26	GTS203	June 28 2017	June 27 2018
5	BiConiLog Antenna	SCHWARZBECK MESS-ELEKTRONIK	VULB9163	GTS214	June 28 2017	June 27 2018
6	Double -ridged waveguide horn	SCHWARZBECK MESS-ELEKTRONIK	9120D-829	GTS208	June 28 2017	June 27 2018
7	Horn Antenna	ETS-LINDGREN	3160	GTS217	June 28 2017	June 27 2018
8	EMI Test Software	AUDIX	E3	N/A	N/A	N/A
9	Coaxial Cable	GTS	N/A	GTS213	June 28 2017	June 27 2018
10	Coaxial Cable	GTS	N/A	GTS211	June 28 2017	June 27 2018
11	Coaxial cable	GTS	N/A	GTS210	June 28 2017	June 27 2018
12	Coaxial Cable	GTS	N/A	GTS212	June 28 2017	June 27 2018
13	Amplifier(100kHz-3GHz)	HP	8347A	GTS204	June 28 2017	June 27 2018
14	Amplifier(2GHz-20GHz)	HP	8349B	GTS206	June 28 2017	June 27 2018
15	Amplifier (18-26GHz)	Rohde & Schwarz	AFS33-18002 650-30-8P-44	GTS218	June 28 2017	June 27 2018
16	Band filter	Amindeon	82346	GTS219	June 28 2017	June 27 2018
17	Power Meter	Anritsu	ML2495A	GTS540	June 28 2017	June 27 2018
18	Power Sensor	Anritsu	MA2411B	GTS541	June 28 2017	June 27 2018

General used equipment:						
Item	Test Equipment	Manufacturer	Model No.	Inventory No.	Cal.Date (mm-dd-yy)	Cal.Due date (mm-dd-yy)
1	Barometer	ChangChun	DYM3	GTS257	June 28 2017	June 27 2018

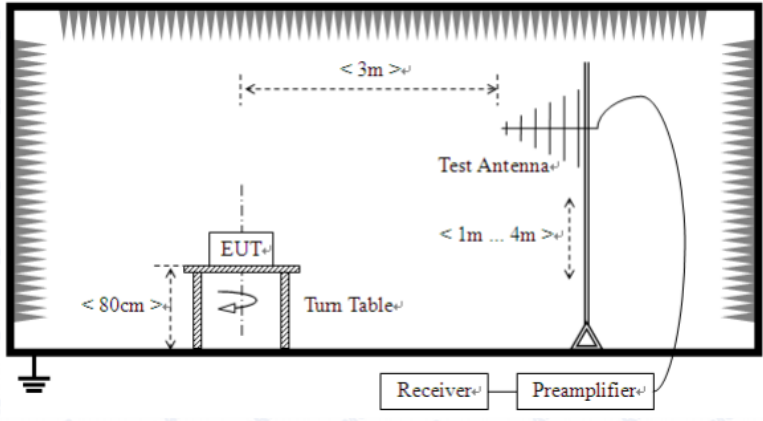


## 7 Test results and Measurement Data

### 7.1 Antenna requirement

<b>Standard requirement:</b>	FCC Part15 C Section 15.203
<p><b>15.203 requirement:</b></p> <p>An intentional radiator shall be designed to ensure that no antenna other than that furnished by the responsible party shall be used with the device. The use of a permanently attached antenna or of an antenna that uses a unique coupling to the intentional radiator, the manufacturer may design the unit so that a broken antenna can be replaced by the user, but the use of a standard antenna jack or electrical connector is prohibited.</p>	
<p><b>EUT Antenna:</b></p>	
<p><i>The antenna is PCB antenna, the best case gain of the antenna is 1.5 dBi</i></p> 	

## 7.2 Radiated Emission Method

Test Requirement:	FCC Part15 C Section 15.209				
Test Method:	ANSI C63.10:2013				
Test Frequency Range:	30MHz to 25GHz				
Test site:	Measurement Distance: 3m				
Receiver setup:	Frequency	Detector	RBW	VBW	Remark
	30MHz-1GHz	Quasi-peak	120KHz	300KHz	Quasi-peak Value
	Above 1GHz	Peak	1MHz	3MHz	Peak Value
Peak		1MHz	10Hz	Average Value	
Limit: (Field strength of the fundamental signal)	Frequency	Limit (dBuV/m @3m)		Remark	
	2400MHz-2483.5MHz	94.00		Average Value	
Limit: (Spurious Emissions)	Frequency	Limit (dBuV/m @3m)		Remark	
	30MHz-88MHz	40.00		Quasi-peak Value	
	88MHz-216MHz	43.50		Quasi-peak Value	
	216MHz-960MHz	46.00		Quasi-peak Value	
	960MHz-1GHz	54.00		Quasi-peak Value	
	Above 1GHz	54.00		Average Value	
74.00		Peak Value			
Limit: (band edge)	Emissions radiated outside of the specified frequency bands, except for harmonics, shall be attenuated by at least 50 dB below the level of the fundamental or to the general radiated emission limits in Section 15.209, whichever is the lesser attenuation.				
Test setup:	Below 1GHz				
	 <p>The diagram illustrates the test setup for frequencies below 1GHz. It shows an Equipment Under Test (EUT) placed on a turn table. The EUT is positioned at a distance of less than 80cm from the test antenna. The test antenna is located at a distance of less than 3m from the EUT. The antenna is connected to a receiver and a preamplifier. The antenna height is indicated as being between 1m and 4m.</p>				
	Above 1GHz				

	<p>The diagram illustrates the test setup. An EUT (Equipment Under Test) is placed on a rotating table. The table is positioned 3 meters away from a test antenna mounted on a vertical tower. The antenna height is adjustable, ranging from 1 meter to 4 meters above the ground. The table height is indicated as less than 150 cm. A receiver and preamplifier are connected to the test antenna. The entire setup is enclosed in a shielded chamber.</p>
<p>Test Procedure:</p>	<ol style="list-style-type: none"> <li>1. The EUT was placed on the top of a rotating table (0.8m for below 1GHz and 1.5 meters for above 1GHz) above the ground at a 3 meter camber. The table was rotated 360 degrees to determine the position of the highest radiation.</li> <li>2. The EUT was set 3 meters away from the interference-receiving antenna, which was mounted on the top of a variable-height antenna tower.</li> <li>3. The antenna height is varied from one meter to four meters above the ground to determine the maximum value of the field strength. Both horizontal and vertical polarizations of the antenna are set to make the measurement.</li> <li>4. For each suspected emission, the EUT was arranged to its worst case and then the antenna was tuned to heights from 1 meter to 4 meters and the rota table was turned from 0 degrees to 360 degrees to find the maximum reading.</li> <li>5. The test-receiver system was set to Peak Detect Function and Specified Bandwidth with Maximum Hold Mode.</li> <li>6. If the emission level of the EUT in peak mode was 10dB lower than the limit specified, then testing could be stopped and the peak values of the EUT would be reported. Otherwise the emissions that did not have 10dB margin would be re-tested one by one using peak, quasi-peak or average method as specified and then reported in a data sheet.</li> </ol>
<p>Test Instruments:</p>	<p>Refer to section 6.0 for details</p>
<p>Test mode:</p>	<p>Refer to section 5.2 for details</p>
<p>Test results:</p>	<p>Pass</p>

**Measurement data:**

## 7.2.1 Field Strength of The Fundamental Signal

### Peak value:

Frequency (MHz)	Read Level (dBuV)	Antenna Factor (dB/m)	Cable Loss (dB)	Preamp Factor (dB)	Level (dBuV/m)	Limit Line (dBuV/m)	Over Limit (dB)	polarization
2437.00	77.73	27.46	5.43	24.76	85.86	114.00	-30.11	Vertical
2437.00	78.49	27.46	5.43	24.76	86.62	114.00	-26.83	Horizontal

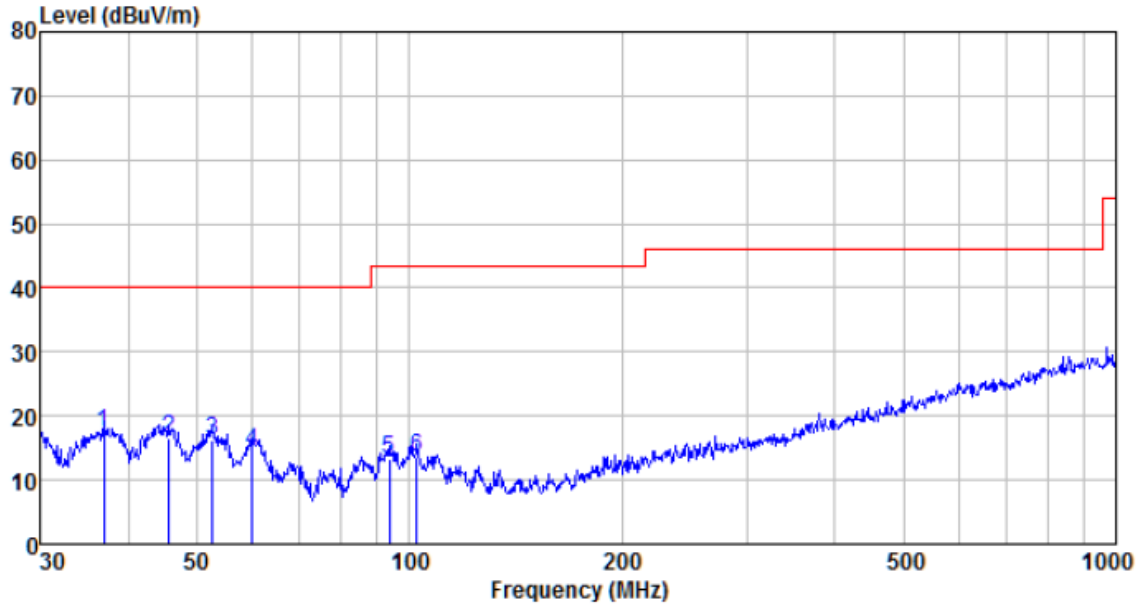
### Average value:

Frequency (MHz)	Read Level (dBuV)	Antenna Factor (dB/m)	Cable Loss (dB)	Preamp Factor (dB)	Level (dBuV/m)	Limit Line (dBuV/m)	Over Limit (dB)	polarization
2437.00	70.85	27.46	5.43	24.76	78.98	94.00	-17.98	Vertical
2437.00	71.62	27.46	5.43	24.76	79.75	94.00	-14.70	Horizontal

## 7.2.2 Spurious emissions

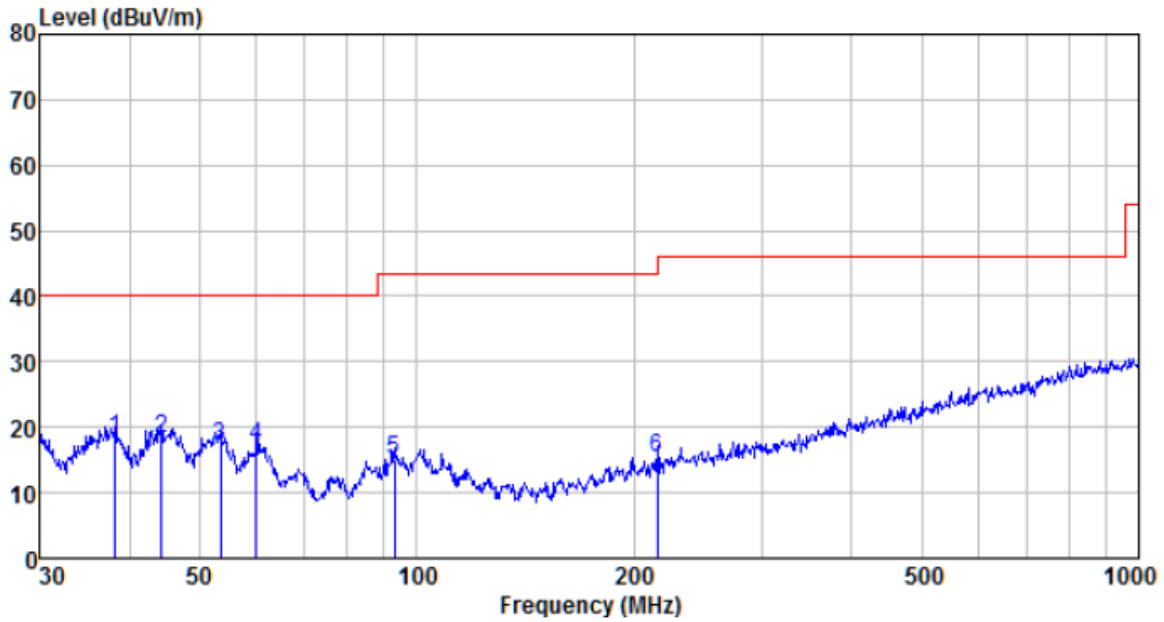
### ■ Below 1GHz

Horizontal :



Freq MHz	Reading level dBuV	Antenna factor dB/m	Cable loss dB	Preamp factor dB	level dBuV	Limit level dBuV/m	Over limit dB	Remark
36.895	35.12	11.67	0.63	30.12	17.30	40.00	-22.70	QP
45.695	33.62	12.26	0.73	30.04	16.57	40.00	-23.43	QP
52.575	33.42	12.03	0.79	29.99	16.25	40.00	-23.75	QP
59.859	32.18	11.32	0.86	29.97	14.39	40.00	-25.61	QP
93.768	30.73	11.25	1.14	29.91	13.21	43.50	-30.29	QP
102.360	30.30	11.89	1.21	29.89	13.51	43.50	-29.99	QP

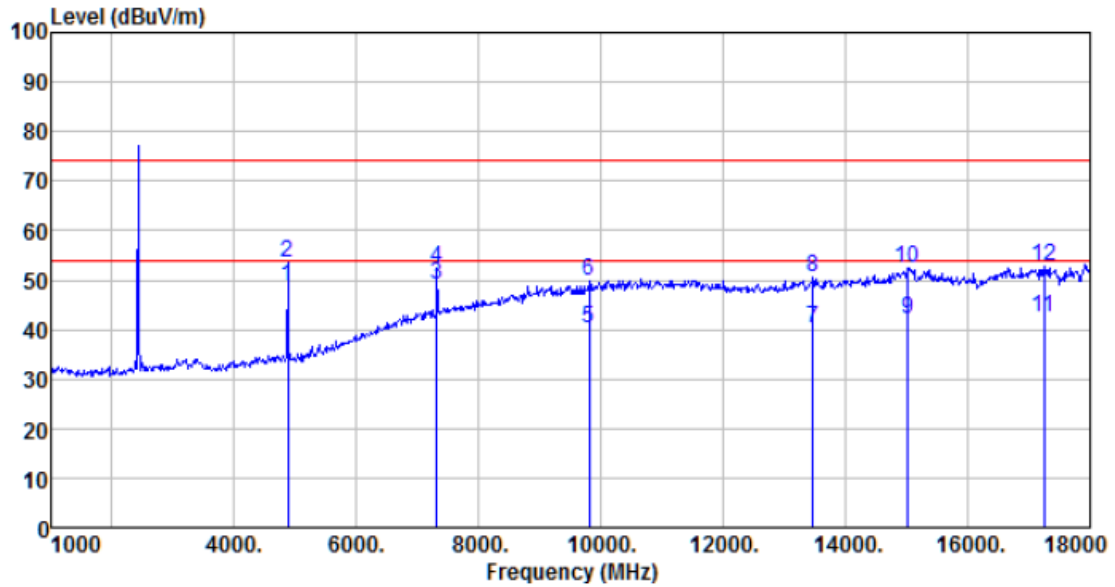
Vertical :



Freq MHz	Reading level dBuV	Antenna factor dB/m	Cable loss dB	Preamp factor dB	level dBuV	Limit level dBuV/m	Over limit dB	Remark
38.212	35.74	11.92	0.64	30.11	18.19	40.00	-21.81	QP
44.275	35.40	12.25	0.71	30.05	18.31	40.00	-21.69	QP
53.505	34.49	11.93	0.80	29.99	17.23	40.00	-22.77	QP
59.859	34.85	11.32	0.86	29.97	17.06	40.00	-22.94	QP
93.113	32.50	11.18	1.14	29.91	14.91	43.50	-28.59	QP
215.268	31.98	10.98	1.93	29.65	15.24	43.50	-28.26	QP

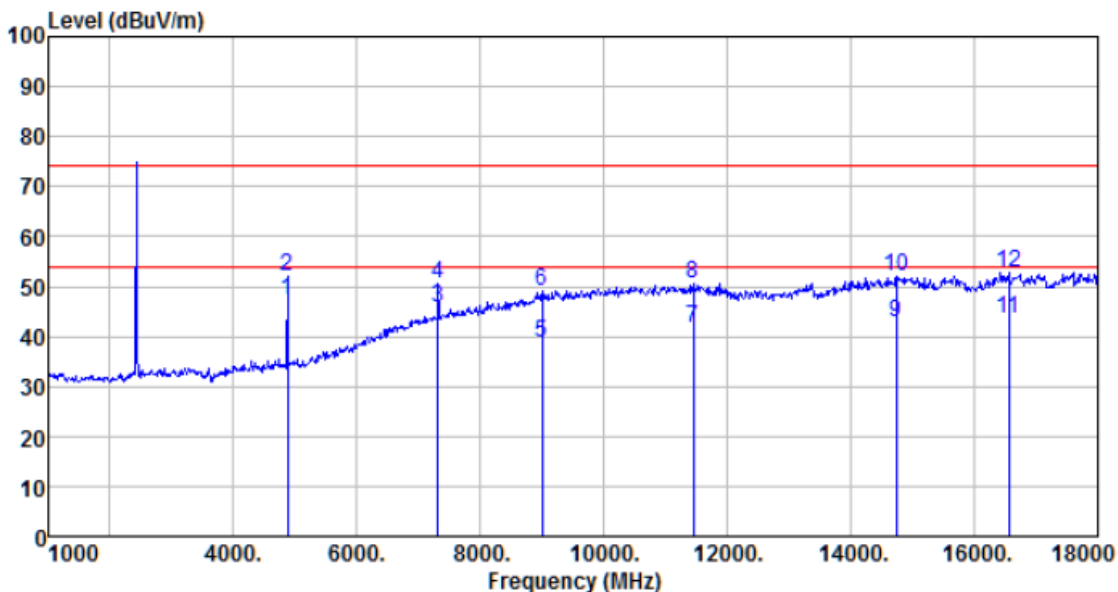
■ Above 1GHz

Horizontal:



Freq MHz	Reading level dBuV	Antenna factor dB/m	Cable loss dB	Preamp factor dB	level dBuV	Limit level dBuV/m	Over limit dB	Remark
4874.360	46.49	31.31	8.66	37.75	48.71	54.00	-5.29	Average
4874.360	51.28	31.31	8.66	37.75	53.50	74.00	-20.50	Peak
7311.250	36.57	36.39	11.71	35.60	49.07	54.00	-4.93	Average
7311.250	40.08	36.39	11.71	35.60	52.58	74.00	-21.42	Peak
9806.000	22.86	38.17	14.29	35.07	40.25	54.00	-13.75	Average
9806.000	32.47	38.17	14.29	35.07	49.86	74.00	-24.14	Peak
13461.000	20.63	40.18	16.23	36.75	40.29	54.00	-13.71	Average
13461.000	30.98	40.18	16.23	36.75	50.64	74.00	-23.36	Peak
15025.000	19.64	40.30	17.45	35.30	42.09	54.00	-11.91	Average
15025.000	30.01	40.30	17.45	35.30	52.46	74.00	-21.54	Peak
17252.000	18.79	41.00	18.98	36.28	42.49	54.00	-11.51	Average
17252.000	29.08	41.00	18.98	36.28	52.78	74.00	-21.22	Peak

**Vertical:**



Freq MHz	Reading level dBuV	Antenna factor dB/m	Cable loss dB	Preamp factor dB	level dBuV	Limit level dBuV/m	Over limit dB	Remark
4876.000	45.05	31.31	8.66	37.75	47.27	54.00	-6.73	Average
4876.000	49.85	31.31	8.66	37.75	52.07	74.00	-21.93	Peak
7307.000	33.43	36.39	11.71	35.60	45.93	54.00	-8.07	Average
7307.000	37.93	36.39	11.71	35.60	50.43	74.00	-23.57	Peak
9007.000	22.06	37.50	13.65	34.50	38.71	54.00	-15.29	Average
9007.000	32.41	37.50	13.65	34.50	49.06	74.00	-24.94	Peak
11455.000	23.54	39.39	14.98	36.31	41.60	54.00	-12.40	Average
11455.000	32.47	39.39	14.98	36.31	50.53	74.00	-23.47	Peak
14736.000	20.13	40.90	17.32	35.65	42.70	54.00	-11.30	Average
14736.000	29.56	40.90	17.32	35.65	52.13	74.00	-21.87	Peak
16555.000	21.62	39.34	18.49	35.91	43.54	54.00	-10.46	Average
16555.000	30.71	39.34	18.49	35.91	52.63	74.00	-21.37	Peak

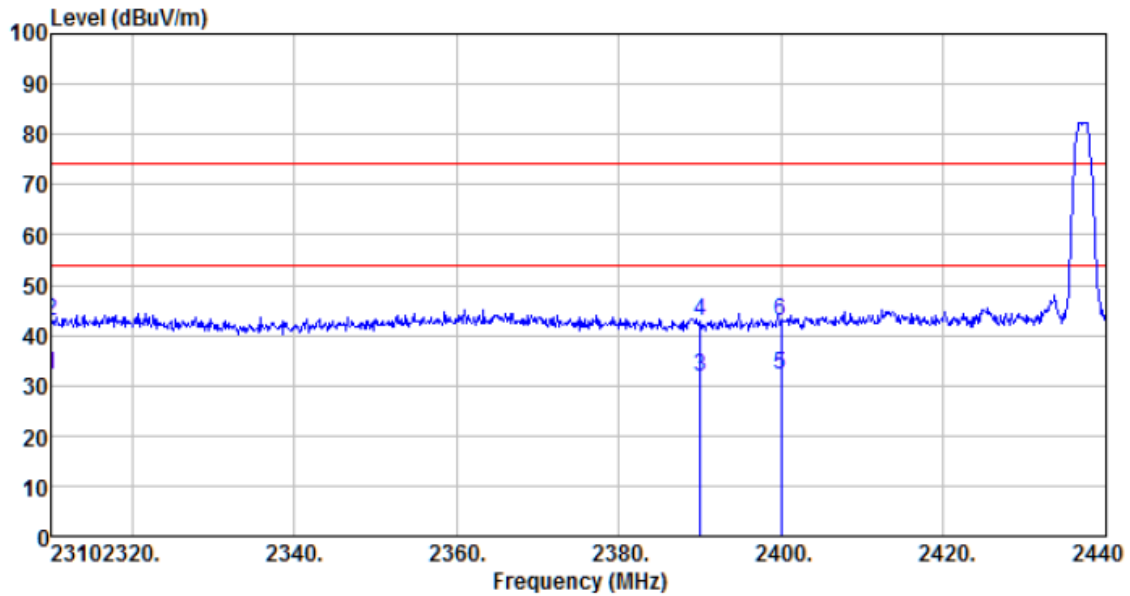
*Remark:*

1. *Final Level = Receiver Read level + Antenna Factor + Cable Loss – Preamplifier Factor*
2. *The emission levels of other frequencies are very lower than the limit and not show in test report.*



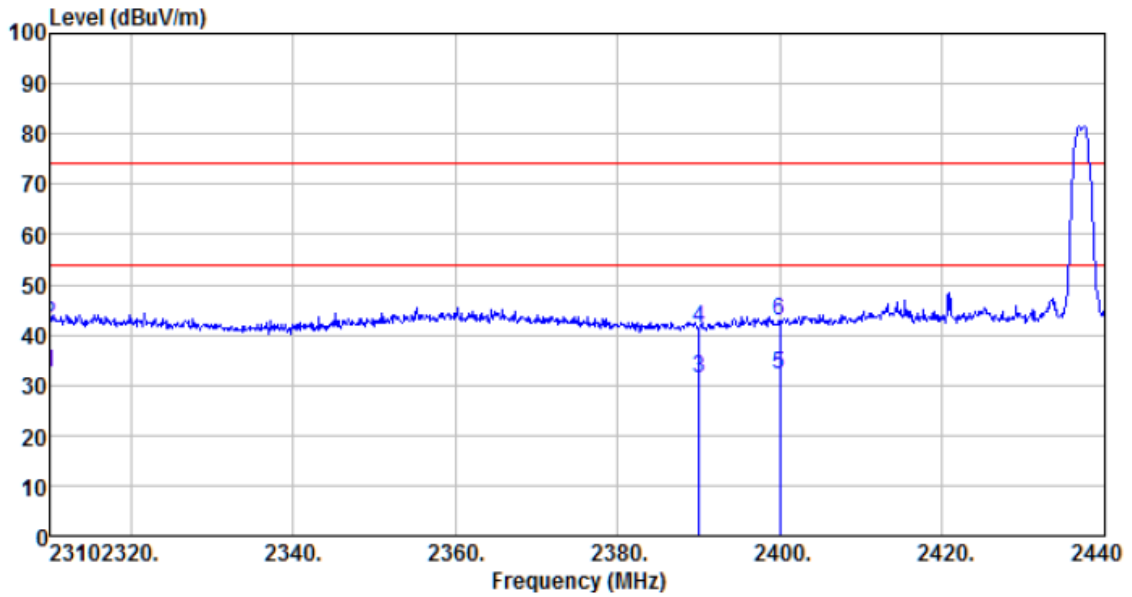
## 7.2.3 Bandedge emissions

Horizontal:



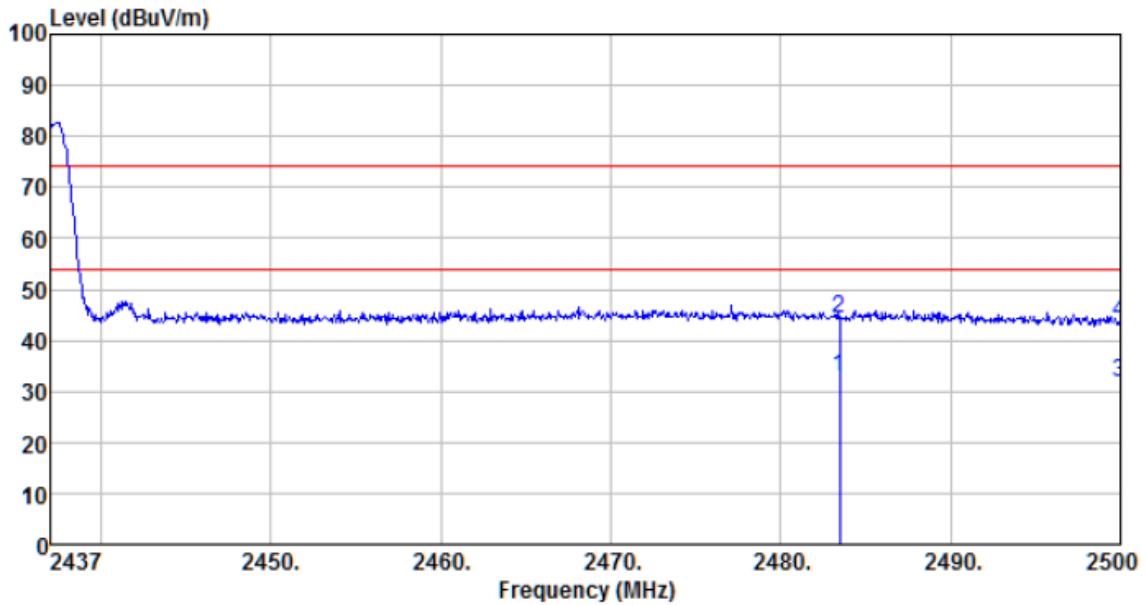
Freq MHz	Reading level dBuV	Antenna factor dB/m	Cable loss dB	Preamp factor dB	level dBuV	Limit level dBuV/m	Over limit dB	Remark
2310.000	24.45	27.07	5.30	24.64	32.18	54.00	-21.82	Average
2310.000	34.96	27.07	5.30	24.64	42.69	74.00	-31.31	Peak
2390.000	23.78	27.31	5.38	24.71	31.76	54.00	-22.24	Average
2390.000	34.65	27.31	5.38	24.71	42.63	74.00	-31.37	Peak
2400.000	24.05	27.31	5.39	24.72	32.03	54.00	-21.97	Average
2400.000	34.66	27.31	5.39	24.72	42.64	74.00	-31.36	Peak

Vertical:



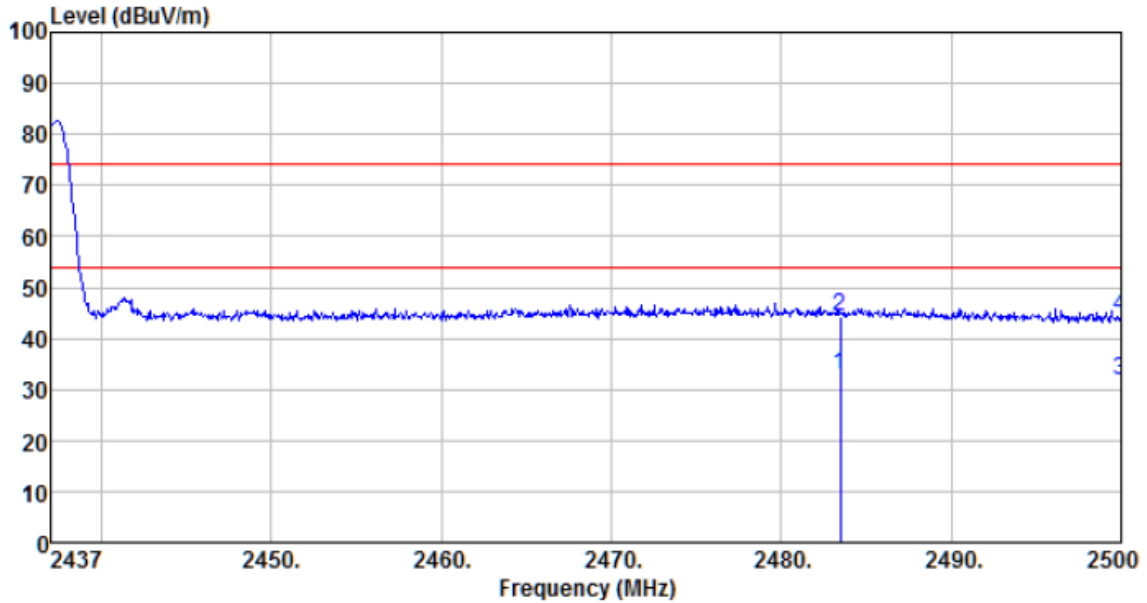
Freq MHz	Reading level dBuV	Antenna factor dB/m	Cable loss dB	Preamp factor dB	level dBuV	Limit level dBuV/m	Over limit dB	Remark
2310.000	24.60	27.07	5.30	24.64	32.33	54.00	-21.67	Average
2310.000	34.50	27.07	5.30	24.64	42.23	74.00	-31.77	Peak
2390.000	23.50	27.31	5.38	24.71	31.48	54.00	-22.52	Average
2390.000	33.52	27.31	5.38	24.71	41.50	74.00	-32.50	Peak
2400.000	24.02	27.31	5.39	24.72	32.00	54.00	-22.00	Average
2400.000	34.71	27.31	5.39	24.72	42.69	74.00	-31.31	Peak

Horizontal:



Freq MHz	Reading level dBuV	Antenna factor dB/m	Cable loss dB	Preamp factor dB	level dBuV	Limit level dBuV/m	Over limit dB	Remark
2483.500	24.75	27.55	5.47	24.80	32.97	54.00	-21.03	Average
2483.500	36.10	27.55	5.47	24.80	44.32	74.00	-29.68	Peak
2500.000	23.65	27.60	5.49	24.86	31.88	54.00	-22.12	Average
2500.000	35.31	27.60	5.49	24.86	43.54	74.00	-30.46	Peak

Vertical:

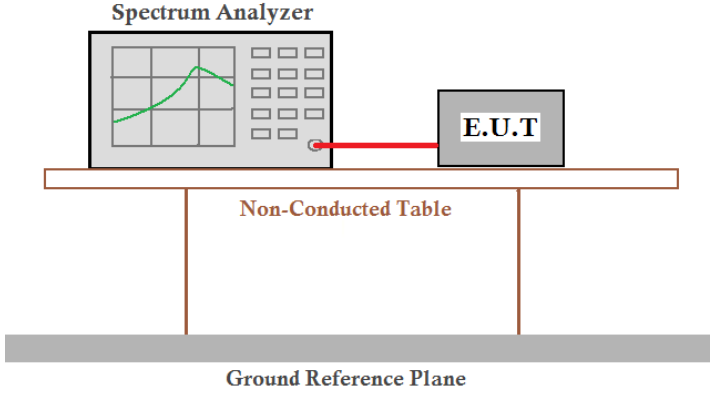


Freq MHz	Reading level dBuV	Antenna factor dB/m	Cable loss dB	Preamp factor dB	level dBuV	Limit level dBuV/m	Over limit dB	Remark
2483.500	24.72	27.55	5.47	24.80	32.94	54.00	-21.06	Average
2483.500	35.97	27.55	5.47	24.80	44.19	74.00	-29.81	Peak
2500.000	23.66	27.60	5.49	24.86	31.89	54.00	-22.11	Average
2500.000	35.96	27.60	5.49	24.86	44.19	74.00	-29.81	Peak

Remark:

1. Final Level = Receiver Read level + Antenna Factor + Cable Loss – Preamplifier Factor

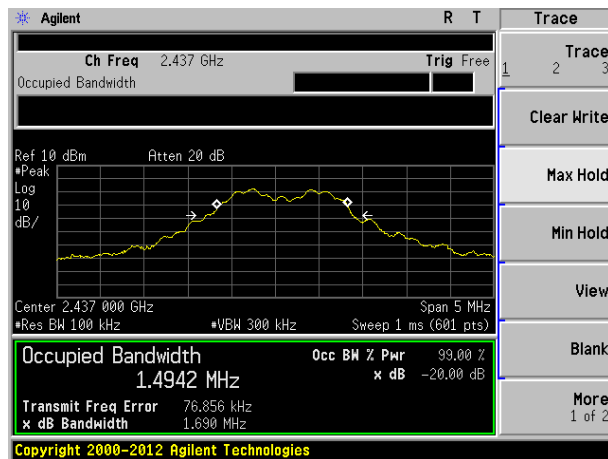
### 7.3 20dB Occupy Bandwidth

Test Requirement:	FCC Part15 C Section 15.249/15.215
Test Method:	ANSI C63.10:2013
Limit:	Operation Frequency range 2400MHz~2483.5MHz
Test setup:	
Test Instruments:	Refer to section 6.0 for details
Test mode:	Refer to section 5.2 for details
Test results:	Pass

### Measurement Data

Test Frequency	20dB bandwidth(MHz)	Result
2437MHz	1.690	Pass

Test plot as follows:



## 8 Test Setup Photo

Radiated Emission



## 9 EUT Constructional Details

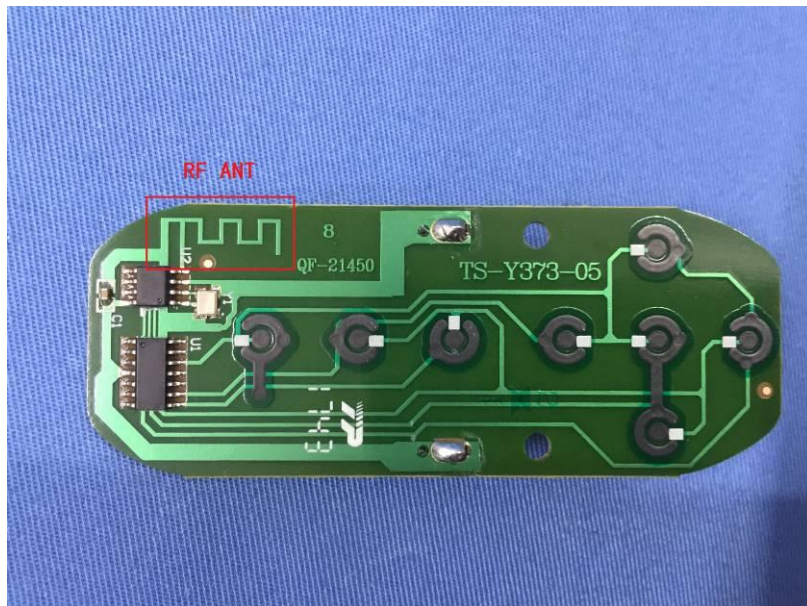












-----End-----