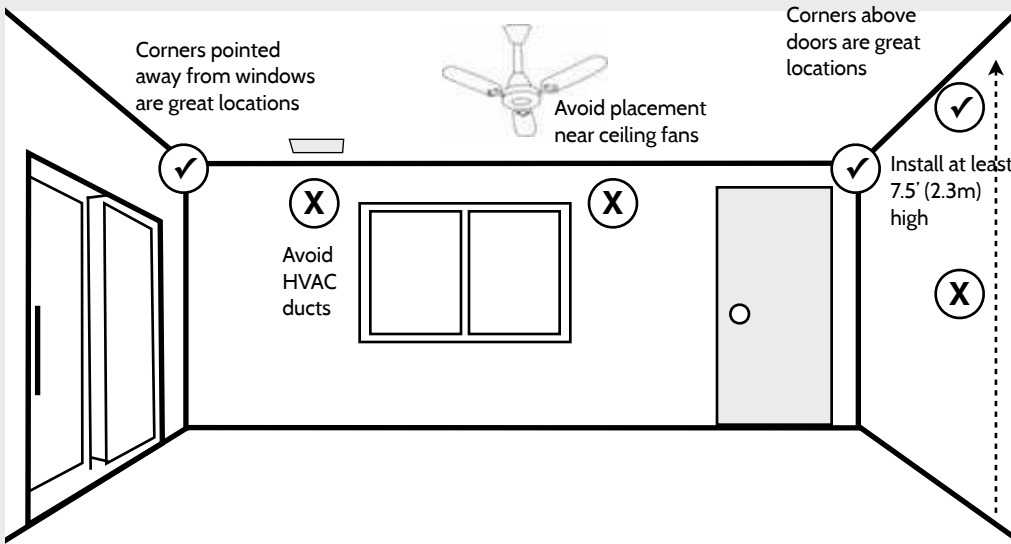
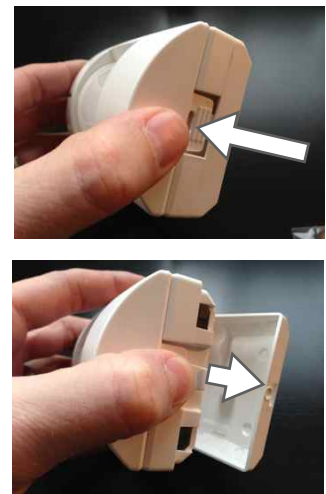


STEP 1 CHOOSE INSTALLATION LOCATION



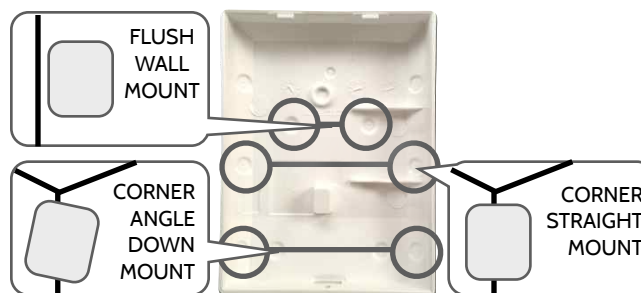
STEP 2 OPEN DEVICE CASING



STEP 3 REMOVE BATTERY TAB



STEP 4 CHOOSE MOUNTING TYPE



STEP 5 SECURE ALL HARDWARE



STEP 4 LEARN INTO PANEL



a. Touch "Settings"



b. Touch "Installation"



c. Touch "Security Sensors"



d. Touch "Quick Install"



e. Trip sensor by opening casing until you hear the panel chime



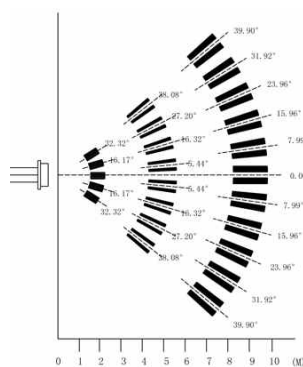
f. Check information on panel, make any changes and click "Save"



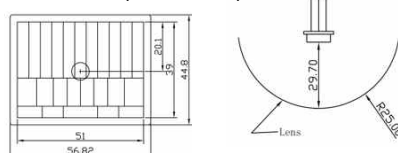
g. Test sensor to ensure proper function

SPECIFICATION CHARTS

DETECTING AREA (Unit = meter) 40lbs at 35'



DIMENSION (Unit = m/m)



DOCUMENTATION INFORMATION

Document#: IQDW-QG-07-13

Revision#: 20121130

Issue Date: 11-30-2012

Qolsys Part #: QS-1200-p01

Firmware : 20130401

Qolsys Inc. proprietary. Reproduction without permission is not permitted.

SUPPORT

GOT QUESTIONS?
CONTACT TECH SUPPORT

TechSupport@Qolsys.com