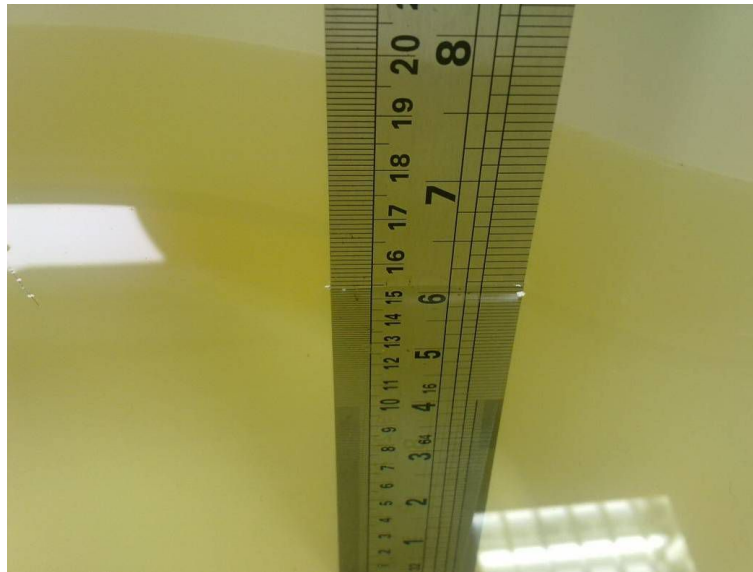


## Test setup photos of the EUT\_SAR



Photograph of the depth in the Head Phantom (850MHz)



Photograph of the depth in the Body Phantom (850MHz)



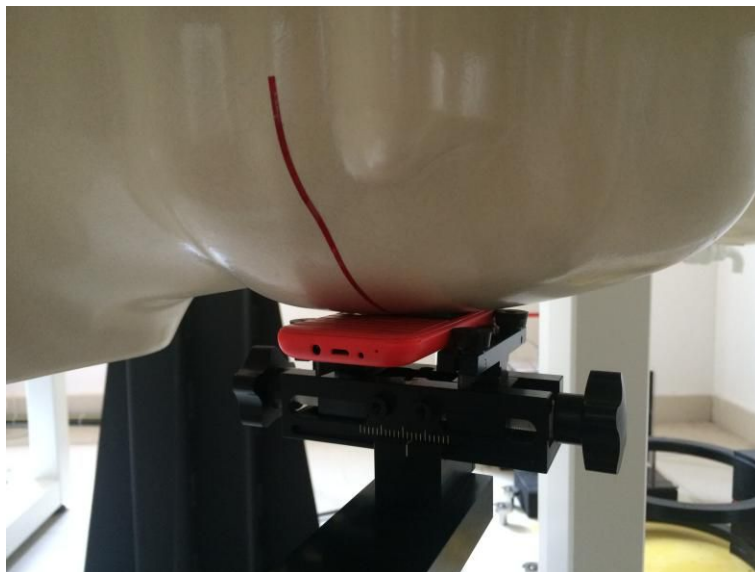
Photograph of the depth in the Head Phantom (1900MHz)



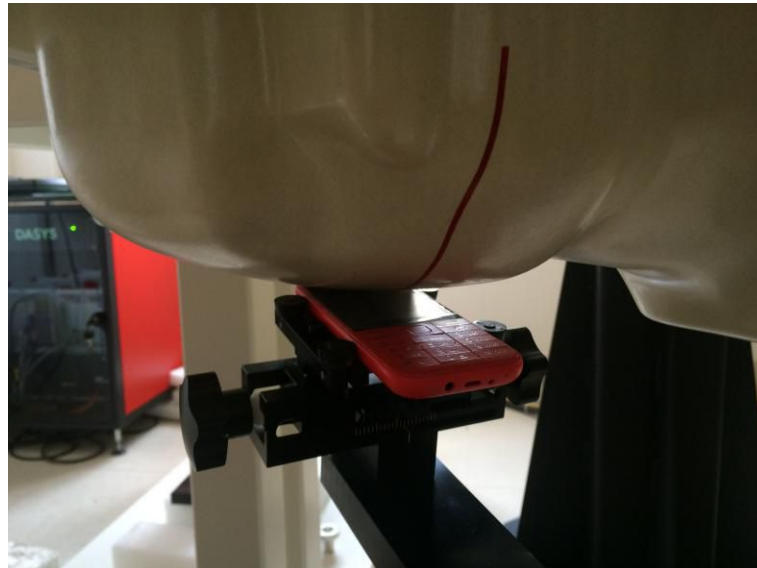
**Photograph of the depth in the Body Phantom (1900MHz)**



**Right Head Tilt Setup Photo**



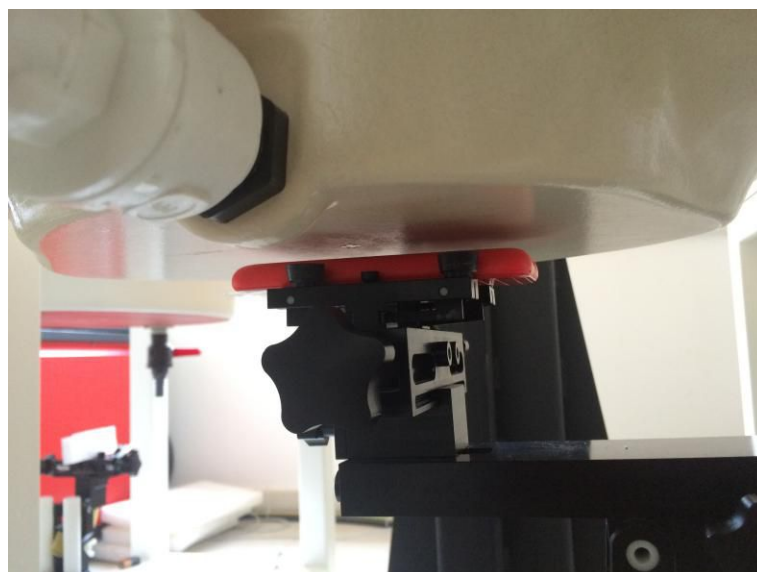
**Right Head Touch Setup Photo**



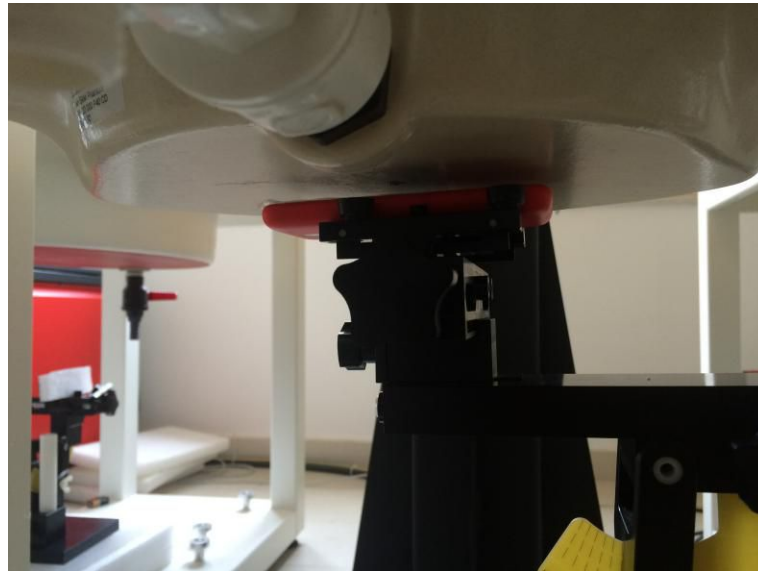
**Left Head Tilt Setup Photo**



**Left Head Touch Setup Photo**



**5mm Body-worn Rear Side Setup Photo**



**5mm Body-worn Front Side Setup Photo**