

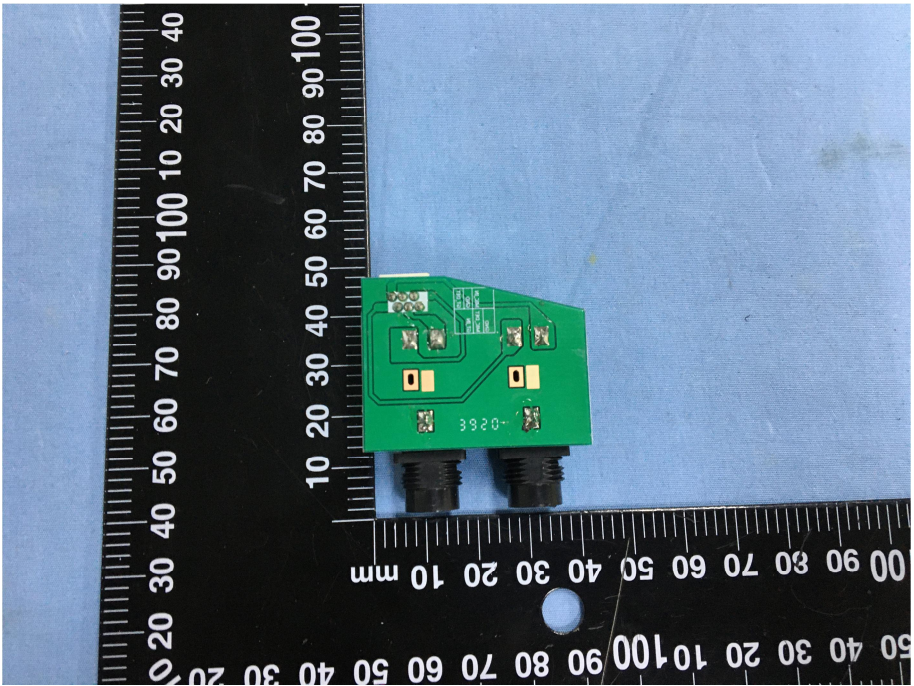
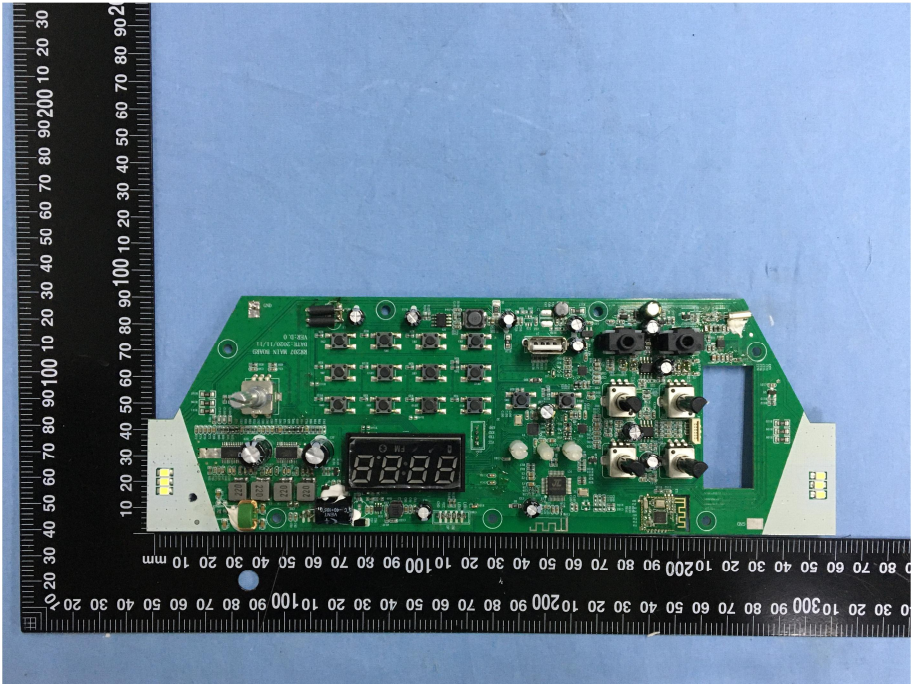
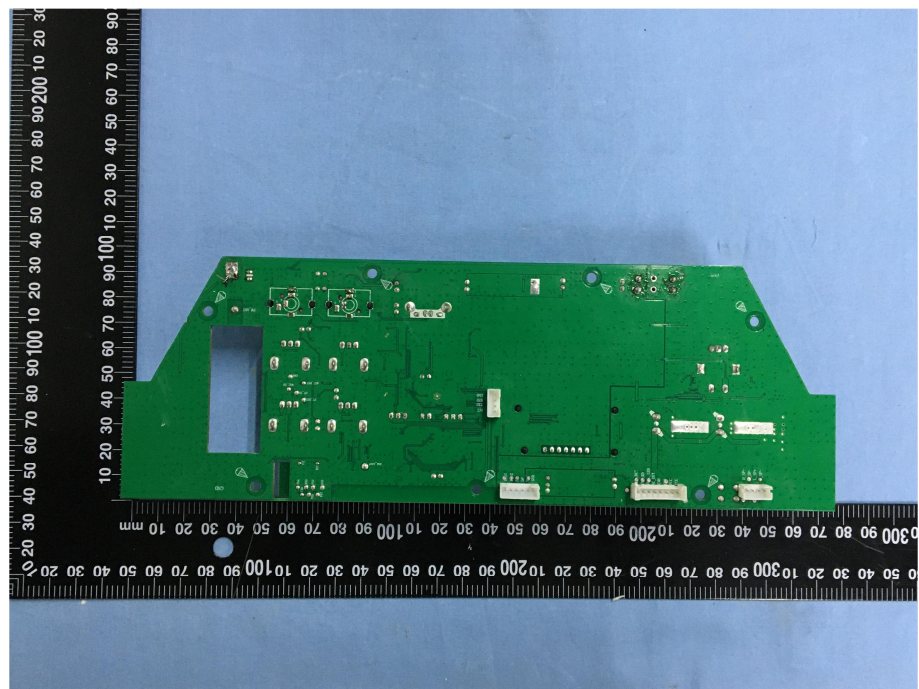


<p style="text-align: center;"><b>Solder Board-Component View 5</b></p>	 <p>The image shows a black rectangular battery component. A ruler is placed vertically to the left and horizontally below the battery for scale. The battery label contains the following text: 'GAWL' logo, 'VALVE REGULATED SEALED LEAD-ACID BATTERY CA1290 12V, 9.0AH', 'RU CE' and 'MH28038' logos, 'CHEE YUEN INDUSTRIAL CO., LTD. MADE IN CHINA', and safety warnings: 'CAUTION: DO NOT SHORT THE BATTERY TERMINALS, DO NOT CHARGE IN A SEALED CONTAINER, RECHARGE AFTER USE, NON-SPILLABLE.' and 'WARNING: RISK OF FIRE EXPLOSION OR BURNS, DO NOT DISASSEMBLE, HEAT ABOVE 50°C OR INCINERATE.' There are also recycling symbols for lead (Pb).</p>
<p style="text-align: center;"><b>Solder Board-Component View 6</b></p>	 <p>The image shows two black cylindrical components mounted on a PCB. A ruler is placed vertically to the left and horizontally below the components for scale. The PCB has some text printed on it, including 'TEST POINT FOR 50% REPAIR TEST' and '12V 9.0AH'. The components are connected to the PCB pads.</p>

<p style="text-align: center;"><b>Solder Board-Component View 7</b></p>	 <p>A photograph of a small green PCB component with two black connectors at the bottom. The component is placed on a blue surface next to a black ruler with white markings. The ruler shows measurements in millimeters, with the component's length being approximately 40 mm. The component has several small components and a label '3920' on its surface.</p>
<p style="text-align: center;"><b>Solder Board-Component View 8</b></p>	 <p>A photograph of a larger green PCB component with various electronic components, including a digital display, capacitors, and resistors. The component is placed on a blue surface next to a black ruler with white markings. The ruler shows measurements in millimeters, with the component's length being approximately 100 mm. The component has a complex layout of components and a label '3920' on its surface.</p>

**Solder  
Board-Component View  
9**



**Solder  
Board-Component View  
10**

