

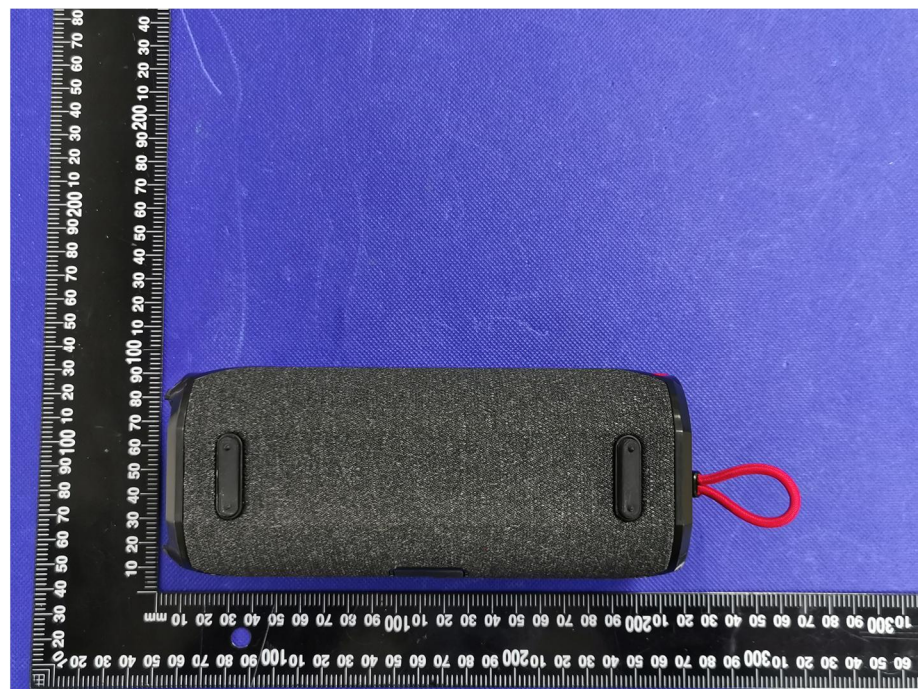


## EXHIBIT 2 - EUT EXTERNAL PHOTOGRAPHS

|                          |   |
|--------------------------|---|
| <p><b>EUT View 1</b></p> |  <p>A photograph showing a black cylindrical device with a red loop and two cables. The device has the text "MONSTER" and symbols "O - + @" printed on it. It is placed on a blue background with a ruler for scale.</p>   |
| <p><b>EUT View 2</b></p> |  <p>A photograph showing the same black cylindrical device from a different angle, highlighting the red loop and the two cables. The device has the text "MONSTER" and symbols "O - + @" printed on it. It is placed on a blue background with a ruler for scale.</p> |



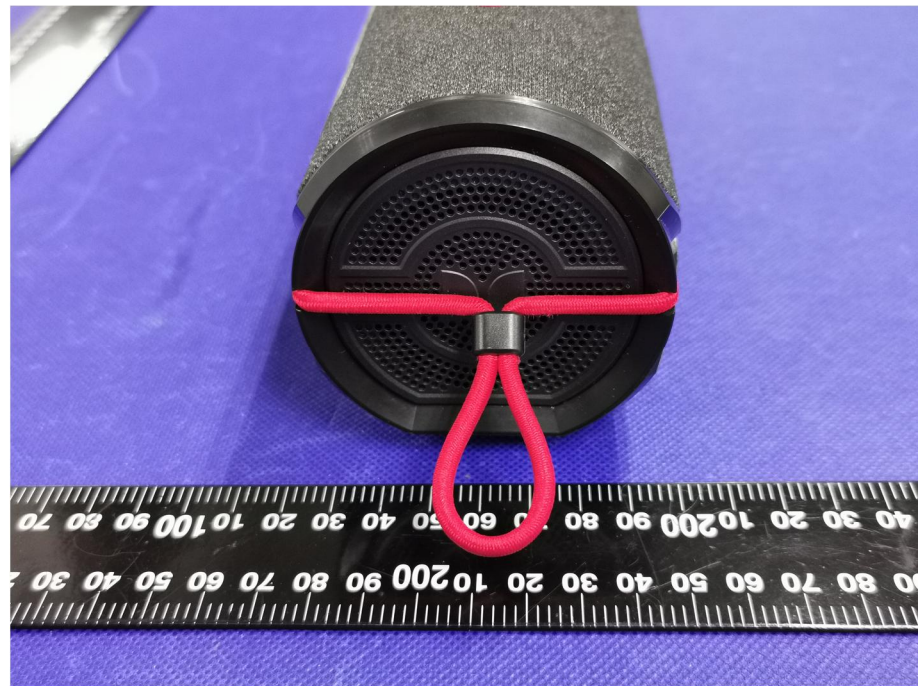
**EUT View 3**



**EUT View 4**



**EUT View 5**



**EUT View 6**





|                          |  |
|--------------------------|--|
|                          |  A close-up photograph of a black plastic component. A red braided cable is connected to a port on the left. To the right is a USB-C port. Below the USB-C port is a small black tab. The component is set against a dark, textured background.        |
| <p><b>EUT View 7</b></p> |  A photograph of a cylindrical device with a black speaker grille. The grille has a circular pattern with a central logo. A ruler is placed below the device for scale, showing measurements in centimeters. The device is resting on a blue surface. |