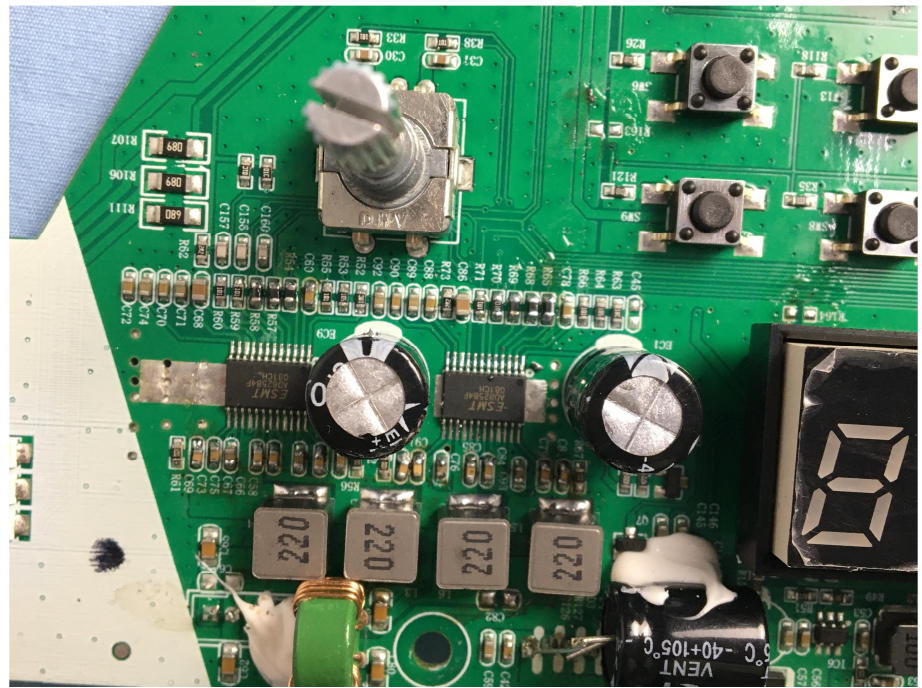
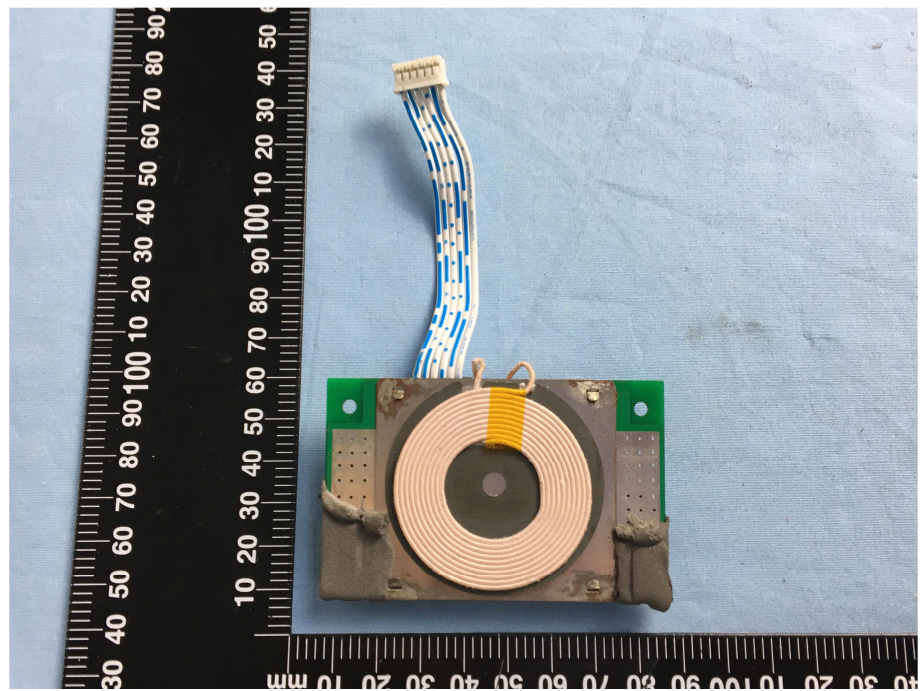
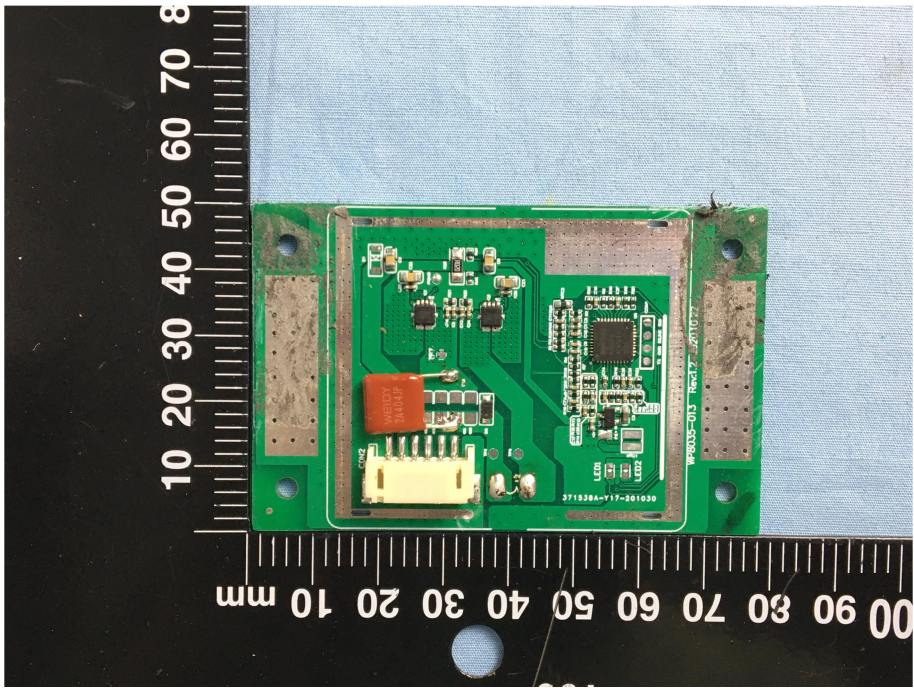
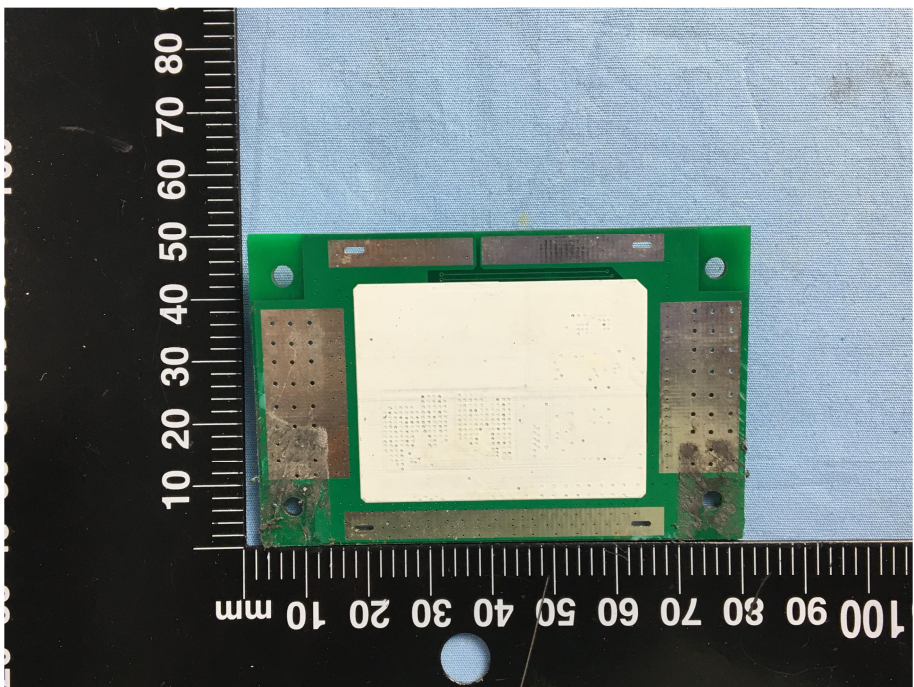


**Solder
Board-Component View
11**

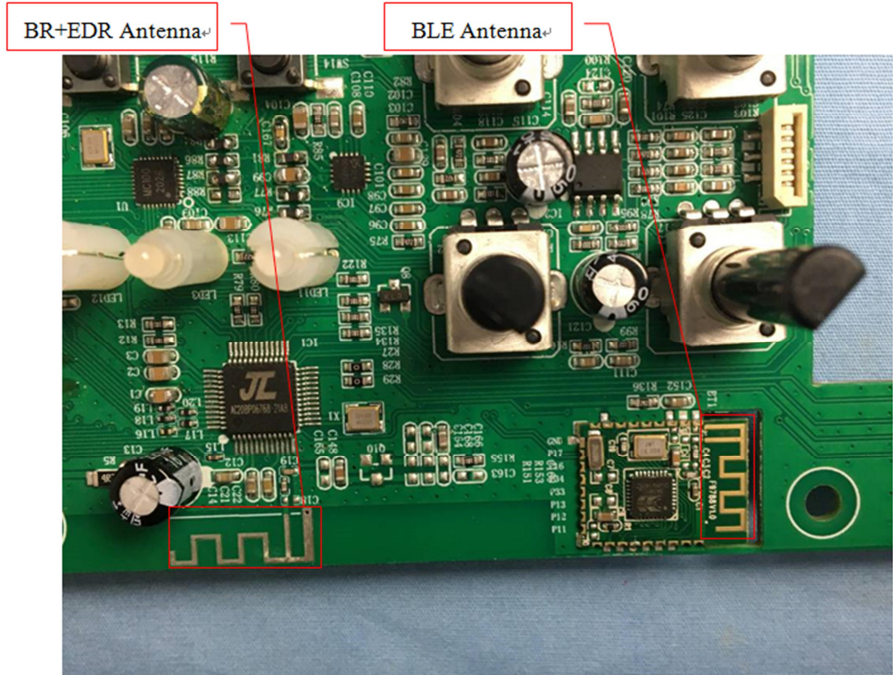


**Solder
Board-Component View
12**



<p>Solder Board-Component View 13</p>	 <p>A photograph of a green printed circuit board (PCB) component, labeled 'Solder Board-Component View 13'. The board is populated with various electronic components, including a large orange capacitor, several integrated circuits, and surface-mount components. A yellow connector is visible on the left side. The board is placed on a black background with a white ruler for scale. The ruler shows measurements in millimeters, with the top edge marked from 0 to 80 mm and the bottom edge marked from 0 to 100 mm. The board's dimensions are approximately 60 mm by 40 mm. Text on the board includes '371528A-V17-301000' and 'W8005-013 Ver1.2 20101227'.</p>
<p>Solder Board-Component View 14</p>	 <p>A photograph of a green printed circuit board (PCB) component, labeled 'Solder Board-Component View 14'. The board is mostly blank, with a large white rectangular area in the center, possibly a solder mask or a component. The board is placed on a black background with a white ruler for scale. The ruler shows measurements in millimeters, with the top edge marked from 0 to 80 mm and the bottom edge marked from 0 to 100 mm. The board's dimensions are approximately 60 mm by 40 mm.</p>

Antenna View



Antenna View

