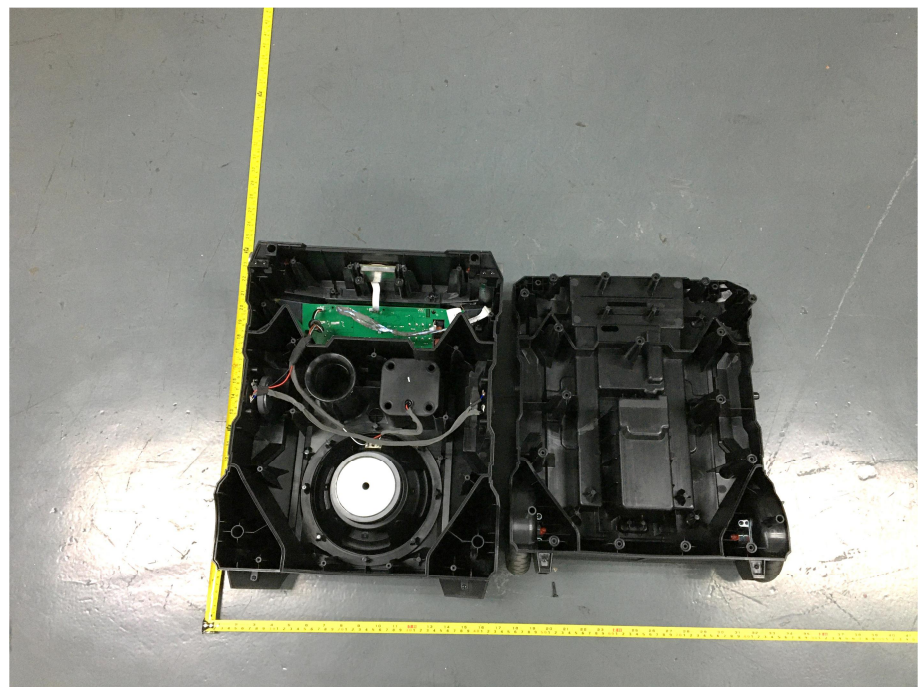


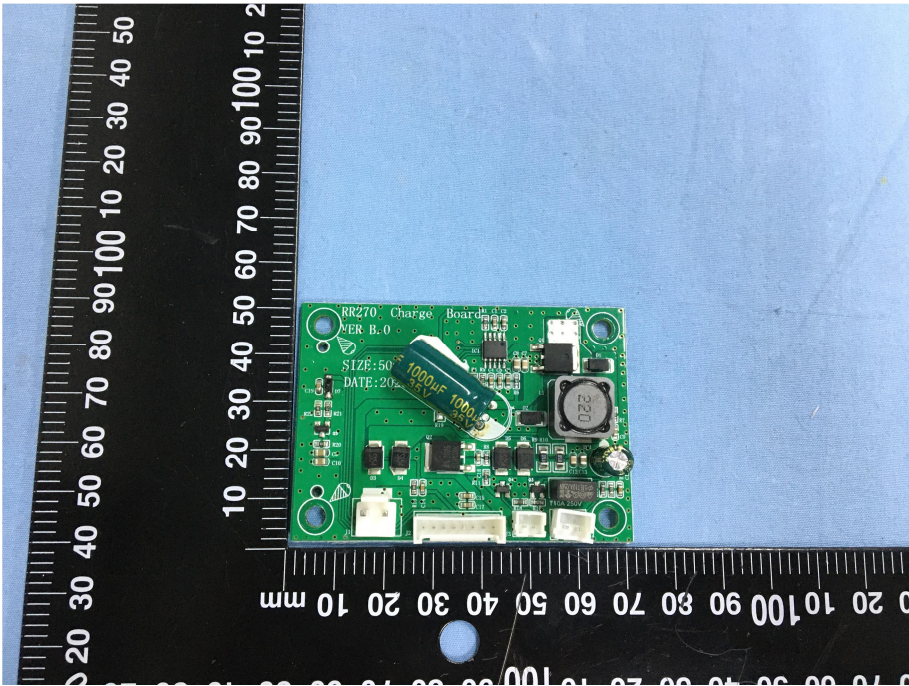
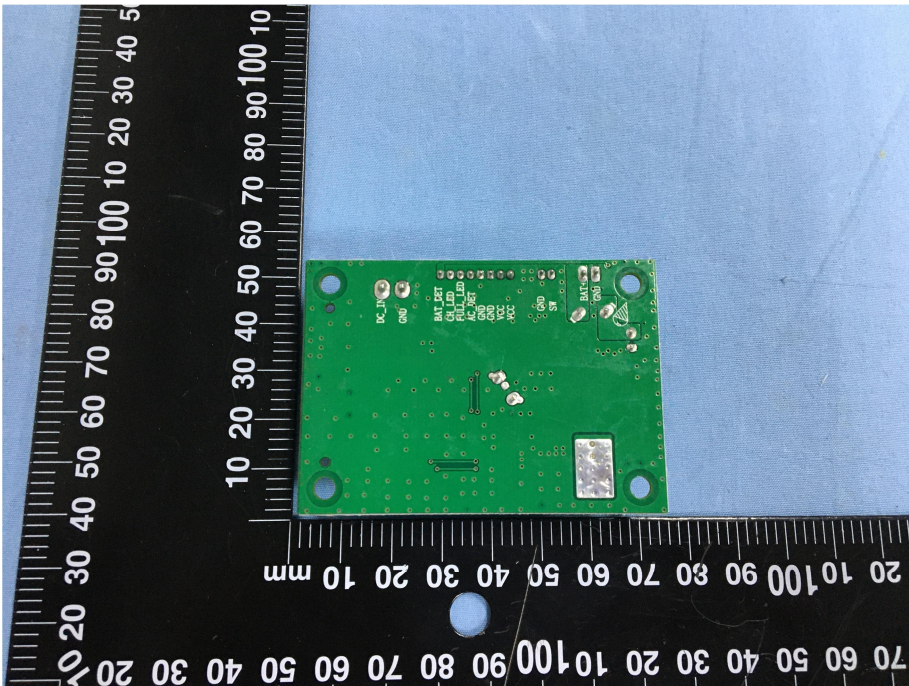
EXHIBIT 3 - EUT INTERNAL PHOTOGRAPHS

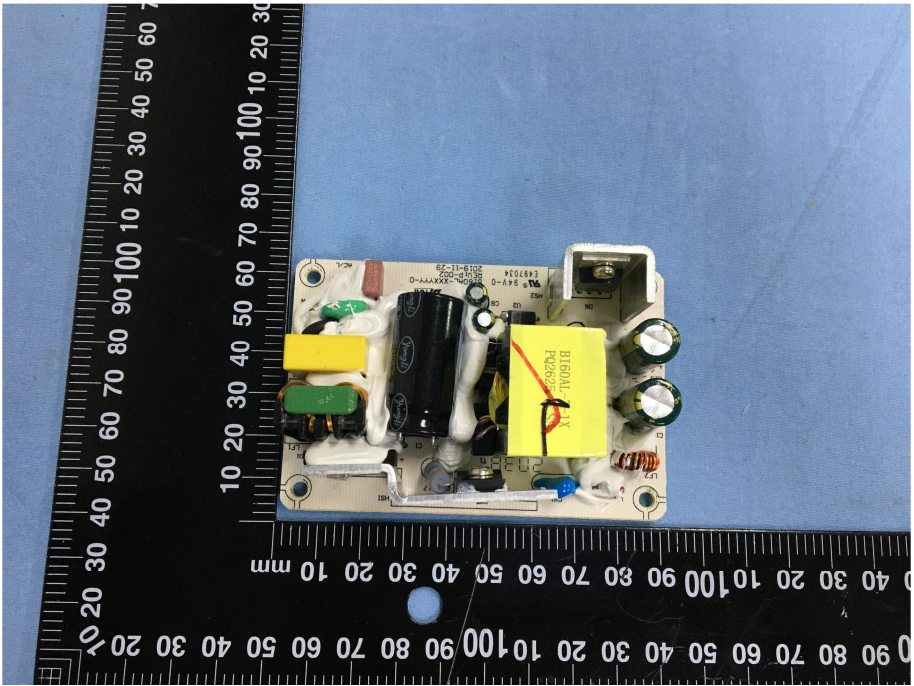
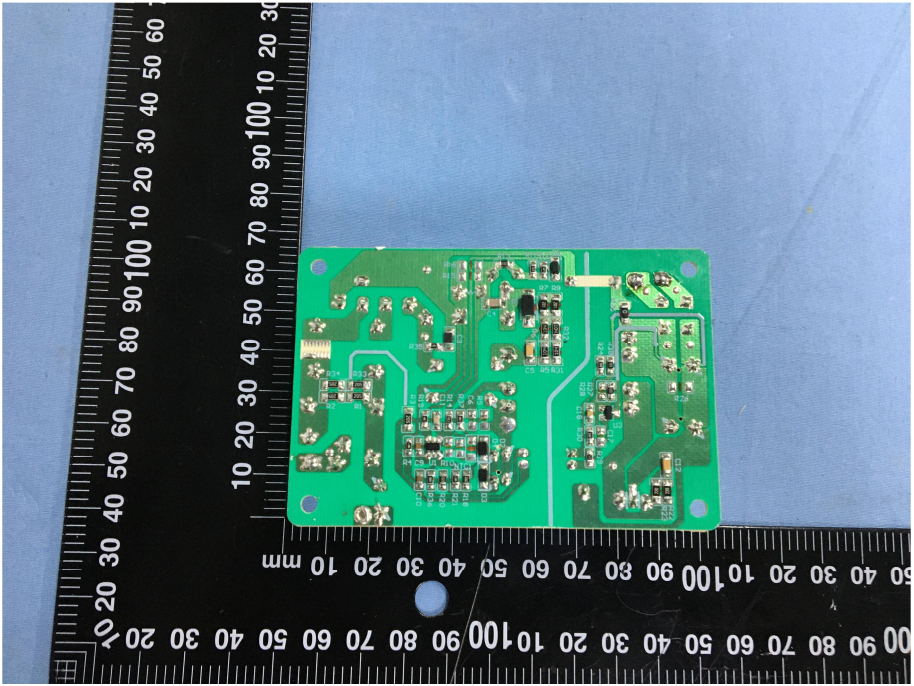
**EUT Housing and Board
View 1**



**EUT Housing and Board
View 2**



<p style="text-align: center;">Solder Board-Component View 1</p>	 A photograph showing the solder side of a green PCB component. The component is rectangular and populated with various electronic components, including a large electrolytic capacitor labeled '1000µF 35V', several integrated circuits, and surface-mount components. The PCB is marked with 'RR270 Charge Board', 'VER. B.0', 'SIZE: 50', and 'DATE: 20'. The component is placed on a blue fabric background next to a black ruler with white markings in millimeters. The ruler shows the component is approximately 50mm wide and 30mm high.
<p style="text-align: center;">Solder Board-Component View 2</p>	 A photograph showing the component side of the same green PCB component. The component is mostly empty, with some surface-mount components and a large silver component visible. The PCB is marked with 'DC IN', 'DC OUT', 'BATT CHG', 'BATT DIS', 'DC IN+', 'DC IN-', 'DC OUT+', 'DC OUT-', 'BATT CHG+', 'BATT CHG-', 'BATT DIS+', 'BATT DIS-', 'GND', 'SF', 'BATT CHG', and 'BATT DIS'. The component is placed on a blue fabric background next to a black ruler with white markings in millimeters. The ruler shows the component is approximately 50mm wide and 30mm high.

<p style="text-align: center;">Solder Board-Component View 3</p>	 <p>A photograph showing the solder side of a printed circuit board (PCB) with various electronic components. The components include a large black electrolytic capacitor, a yellow electrolytic capacitor, several smaller capacitors, and integrated circuits. A black ruler with white markings is placed vertically to the left of the board for scale, showing measurements in millimeters. The board is set against a blue background.</p>
<p style="text-align: center;">Solder Board-Component View 4</p>	 <p>A photograph showing the solder side of a printed circuit board (PCB) with various electronic components. The components include a large black electrolytic capacitor, a yellow electrolytic capacitor, several smaller capacitors, and integrated circuits. A black ruler with white markings is placed vertically to the left of the board for scale, showing measurements in millimeters. The board is set against a blue background.</p>