

Get Started

Learn More

For more help, tips, and the full user manual for your Qualcomm Toq smartwatch, go to [Toq.Qualcomm.com/support](https://www.qualcomm.com/support).

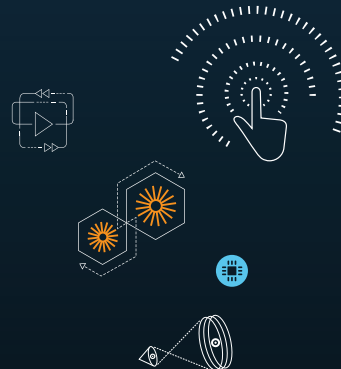
WARNING: Do not operate the smartwatch while driving or in any other situation where distractions can cause injury.



© 2013 Qualcomm Connected Experiences, Inc. All rights reserved. Qualcomm is a trademark of Qualcomm Incorporated, registered in the United States and in other countries. Toq is a trademark of Qualcomm Incorporated. All Qualcomm Incorporated trademarks are used with permission. Android and Google Play are trademarks of Google Inc. The Bluetooth® word mark and logos are registered trademarks owned by Bluetooth SIG, Inc. and any use of such marks by Qualcomm is under license. Other product and brand names may be trademarks or registered trademarks of their respective owners.

Qualcomm Toq smartwatch is a product of Qualcomm Connected Experiences, Inc.

80-HK071-1,10/2013



Qualcomm® Toq™ smartwatch

Welcome to the Qualcomm Toq smartwatch.

This guide will get you started quickly and easily.



Also check out helpful setup videos at [Toq.Qualcomm.com/support](https://www.qualcomm.com/support).

Note: Before beginning setup, remove all protective plastic from the smartwatch, power adapter, and wireless charger.

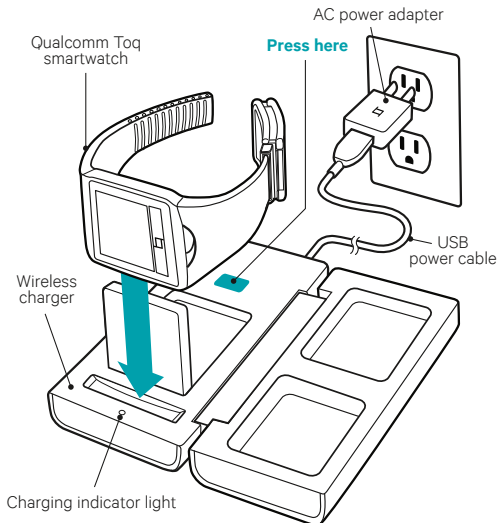
STEP
1

Charge

Charging turns on your smartwatch.

- Press the highlighted button to raise the charging panel.
- Place the smartwatch on the charger as shown.

Charge the smartwatch until the charging indicator light is no longer red. This can take up to 2 hours.



STEP
2

Download

- On your Android™ phone, go to Google Play™ Store and search for “Toq”.
- Download and install the Qualcomm Toq App.

STEP
3

Pair Smartwatch with Phone

The Qualcomm Toq smartwatch pairs with your phone like any other Bluetooth® device.

- Place your smartwatch on the charger and remove it again to activate the Welcome screen. Tap **Begin Setup**.
- In the Toq App on your phone, tap the **Start Pairing** icon to open your phone's Bluetooth Settings.
- Locate Toq Smartwatch and tap to pair. Accept the pairing request on your smartwatch and your phone and you're done!

NEXT

Now learn to use your smartwatch with the **Use Your Smartwatch** guide provided in the box.