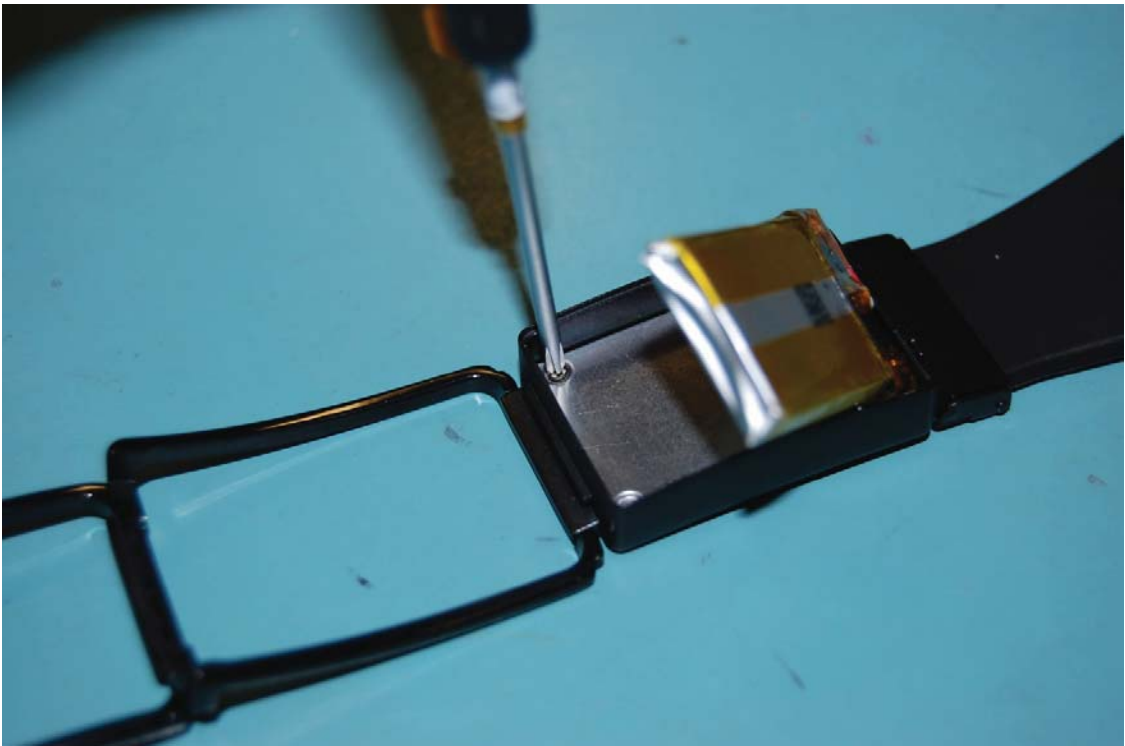
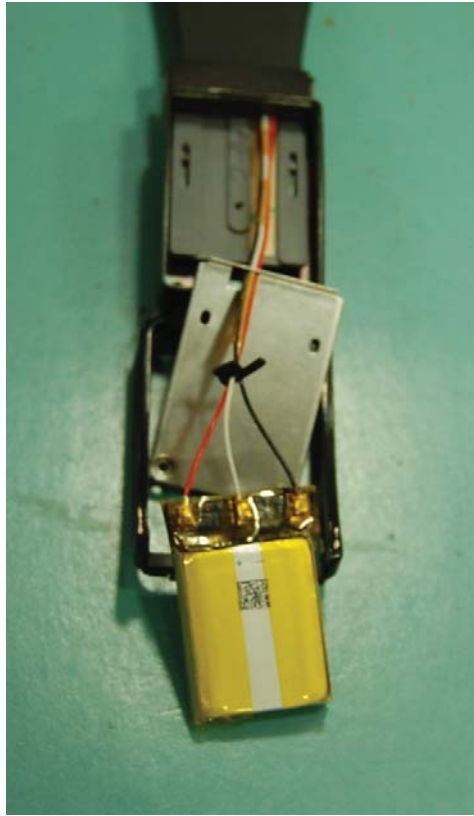


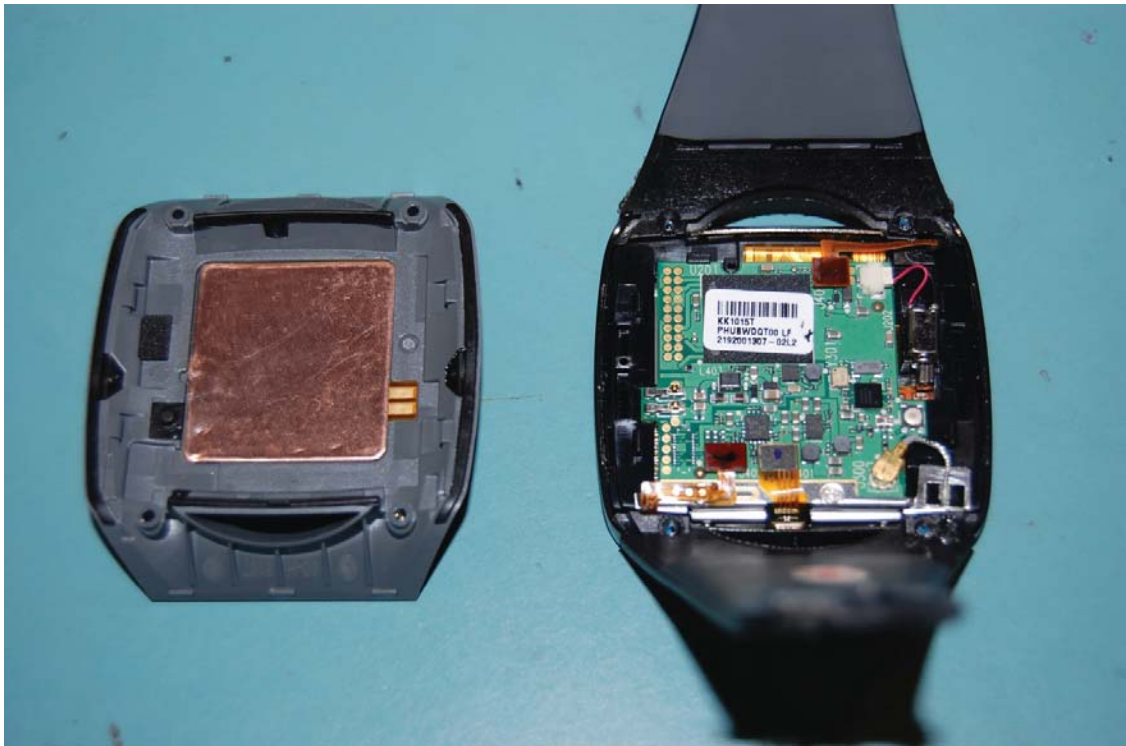
***Exhibit 10***  
***Toq Smartwatch***  
***Internal Photographs***

<b>FCC Part 15 Certification</b>	
FCC ID:	<b>2AAIMSW1</b>
Model:	<b>ToqSW1</b>

<b>STATEMENT OF CERTIFICATION</b>	
<i>The data, data evaluation and equipment configuration represented herein are a true and accurate representation of the measurements of the sample's radio frequency interference emissions characteristics as of the dates and at the times of the test under the conditions herein specified.</i>	
Report Prepared by:	QUALCOMM Connected Experiences, Inc. 5775 Morehouse Drive San Diego, CA 92121-1714

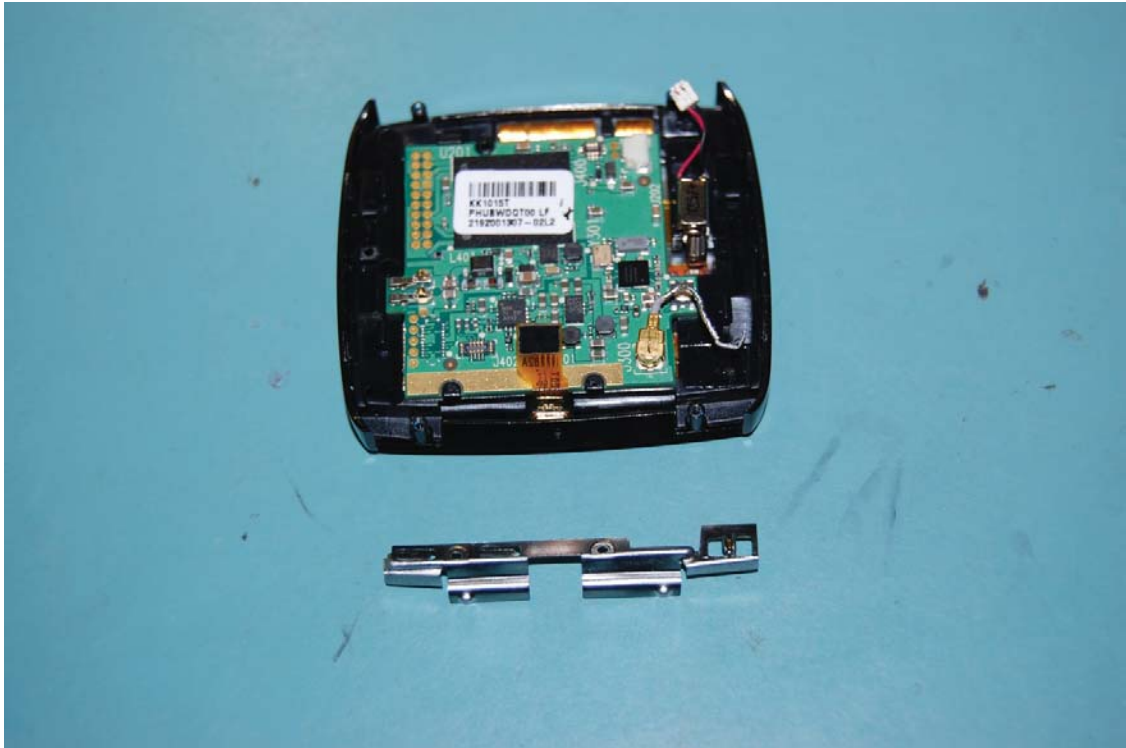


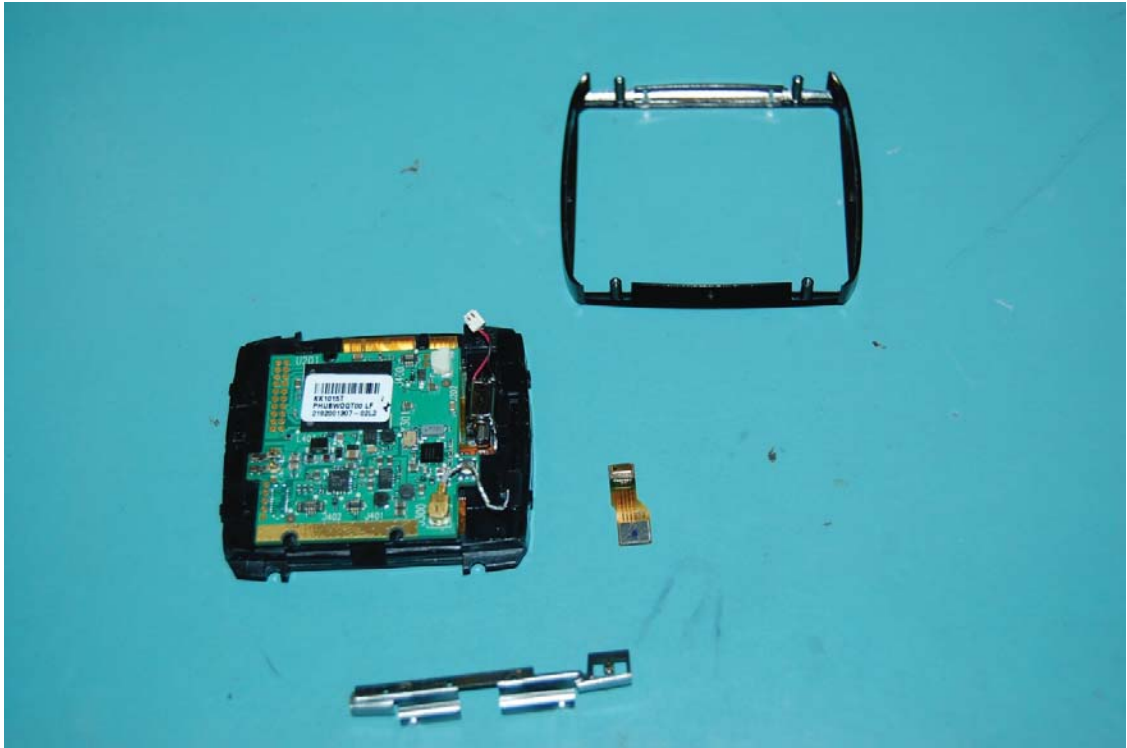




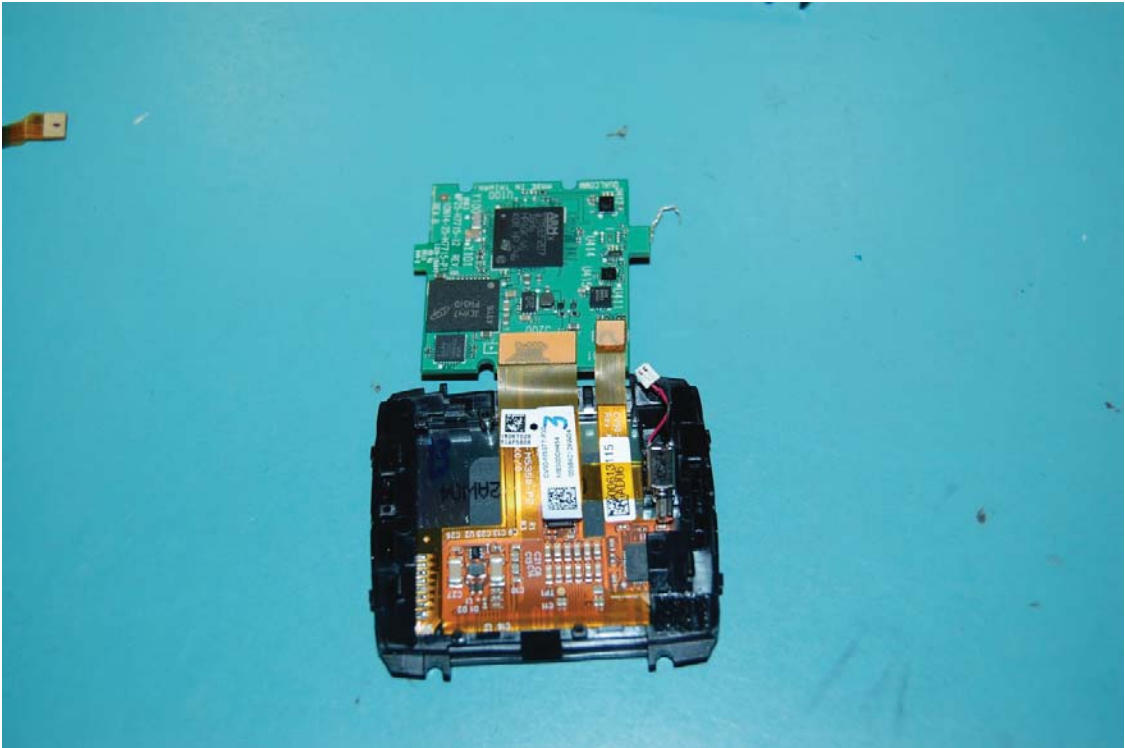




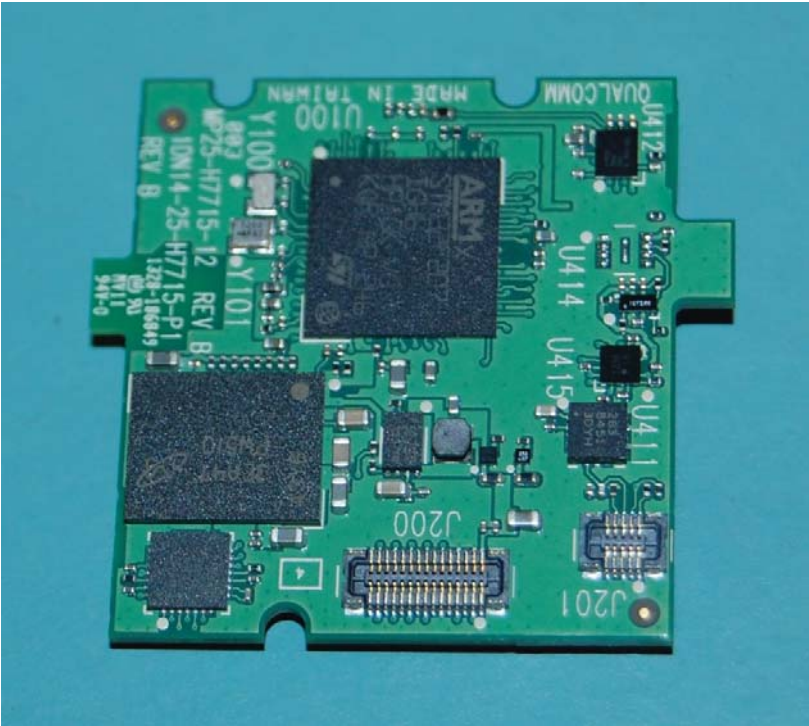


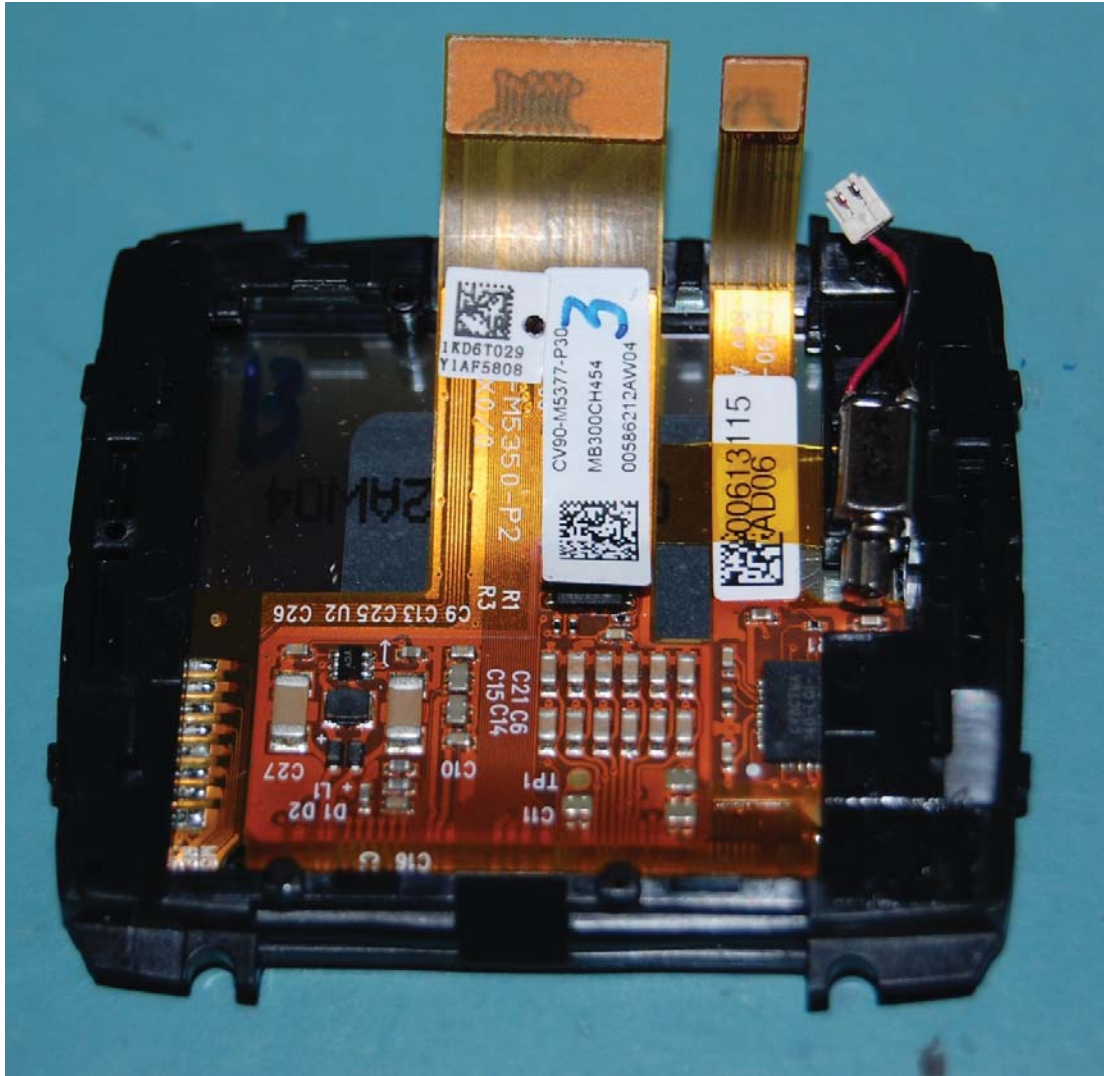






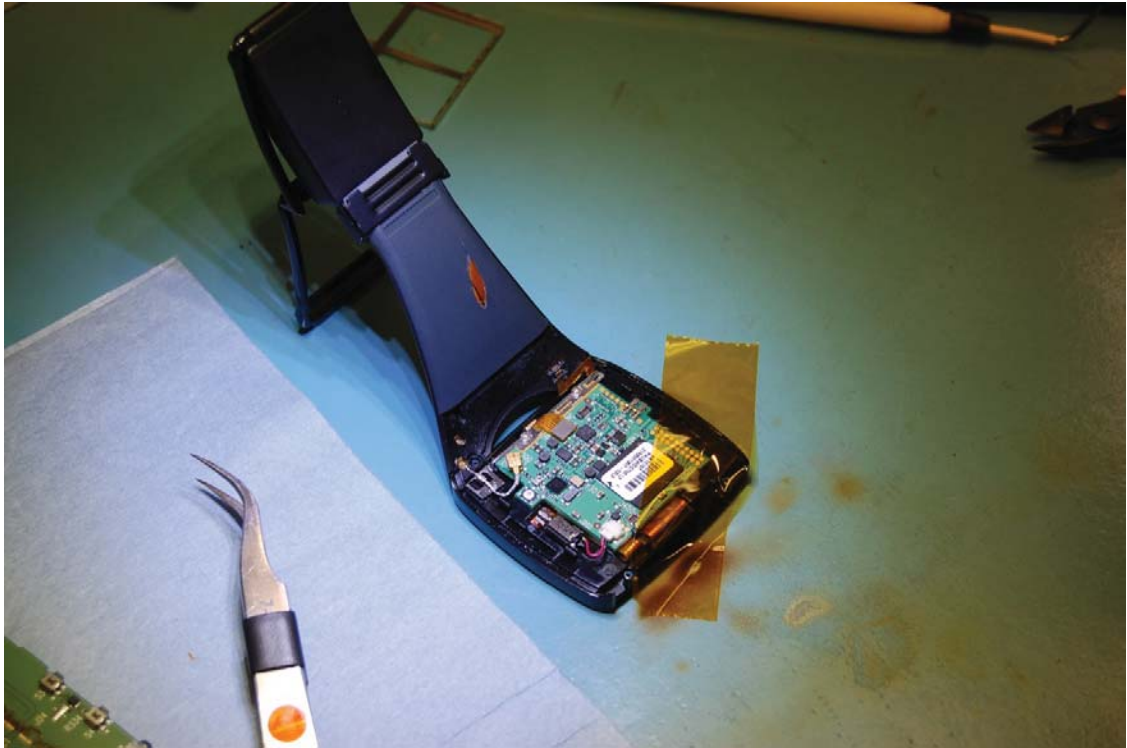


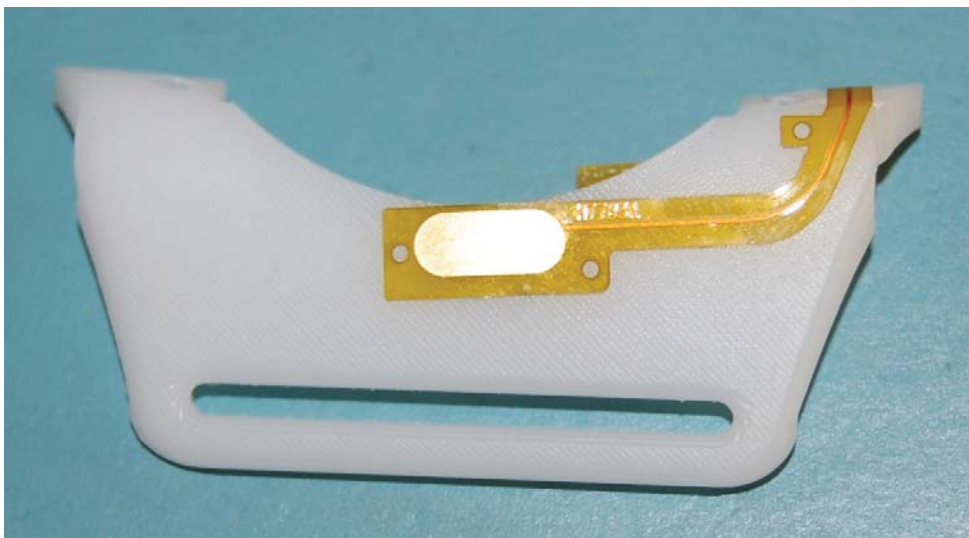




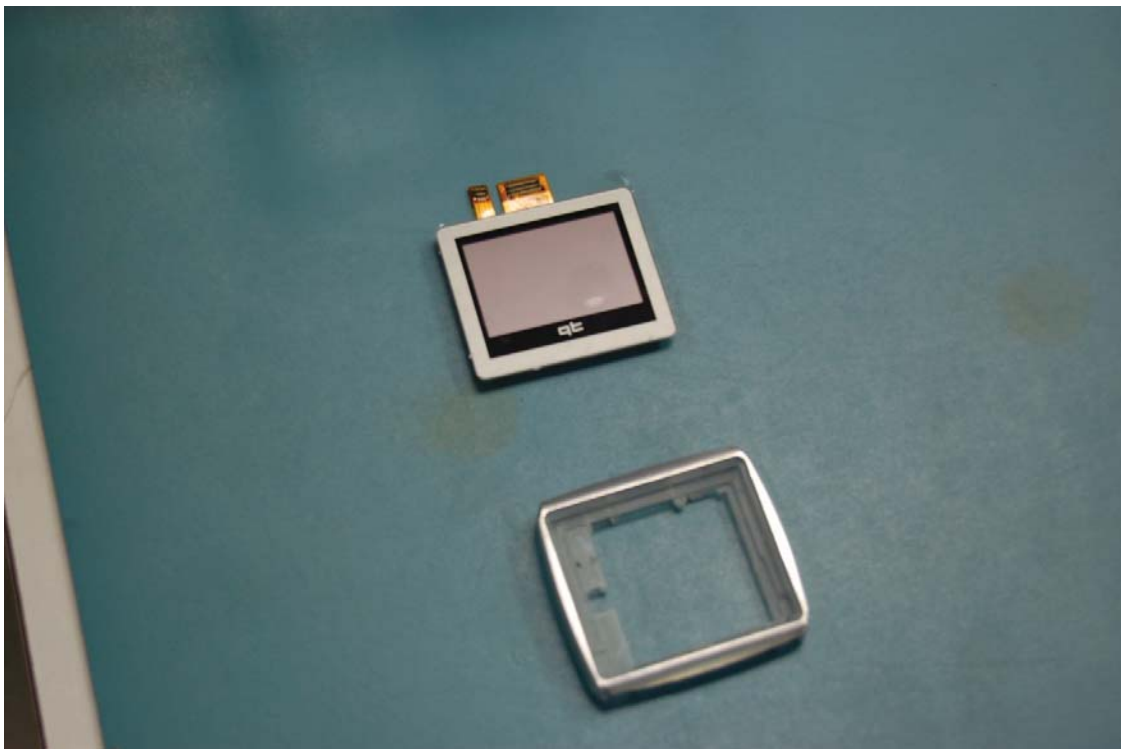
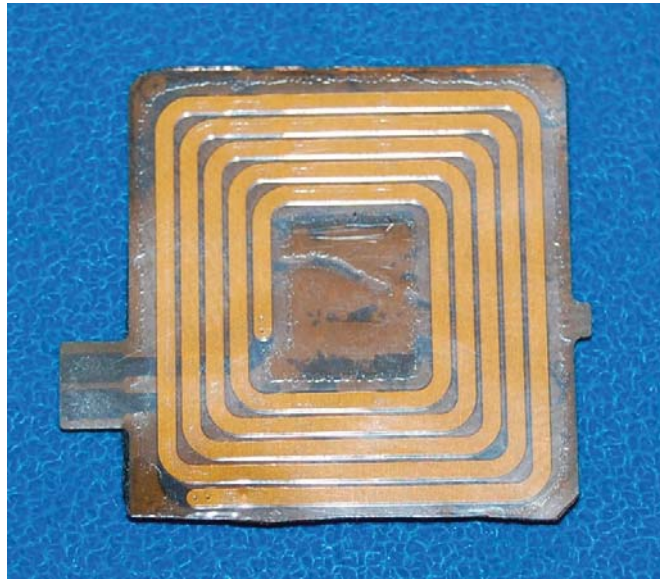


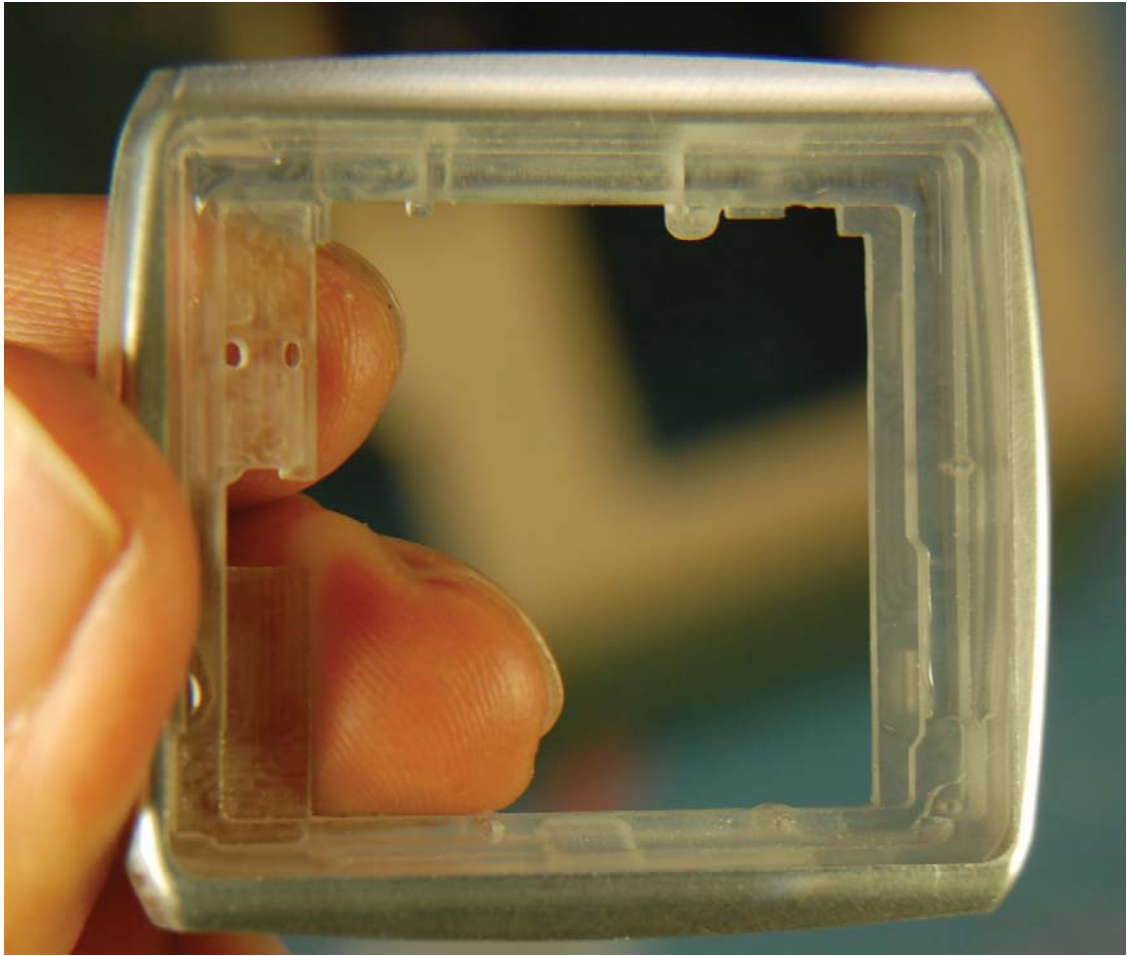










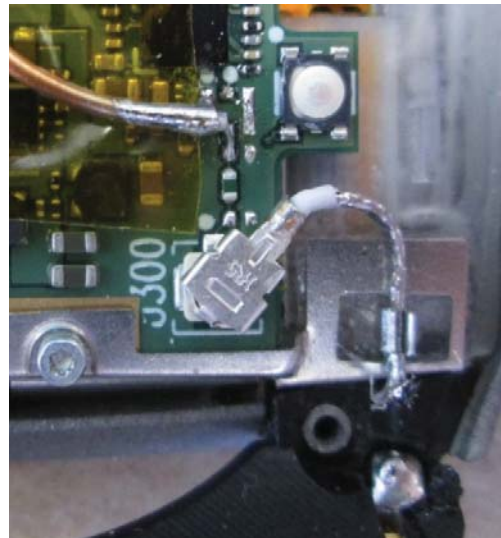


# Toq Smartwatch Antenna

Description: Monopole molded in watch band fed with coax cable



The antenna is a monopole molded into the watch band. This photo shows the rubber cut away to expose the end of the antenna.



Coax cable feed to monopole antenna molded into the watch band.



X-Ray shows coax feed and antenna element molded into watch band.