

Mouse Antenna Specification

Mouse PCB Antenna

The Mouse antenna adopts the ultra-small PCB antenna, and because of the limited area of PCB, the gain of antenna will be smaller than that of the other antennas. The communication distance can reach about 15 ~ 20 meters. The size of the Keyboard Module PCB antenna is 15.25 * 3.0mm, and the thickness of PCB is 1.6mm. The specific size of the antenna is shown in figure 1

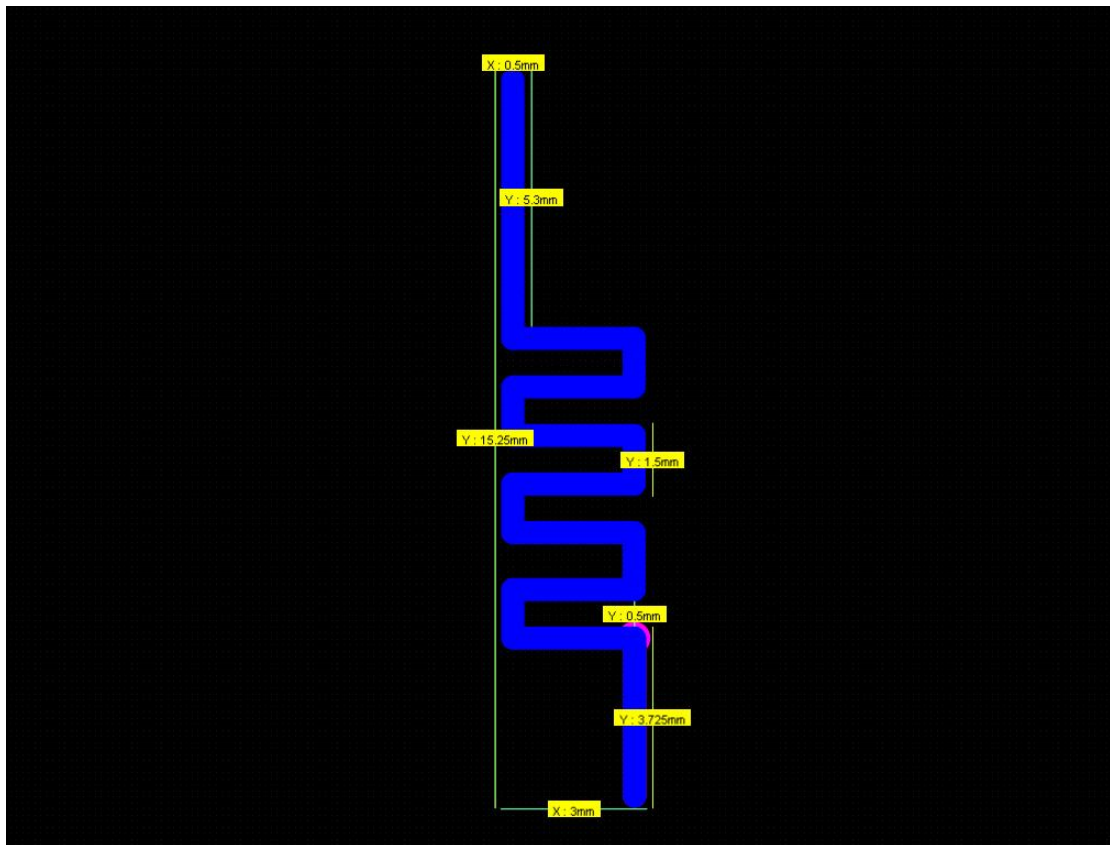
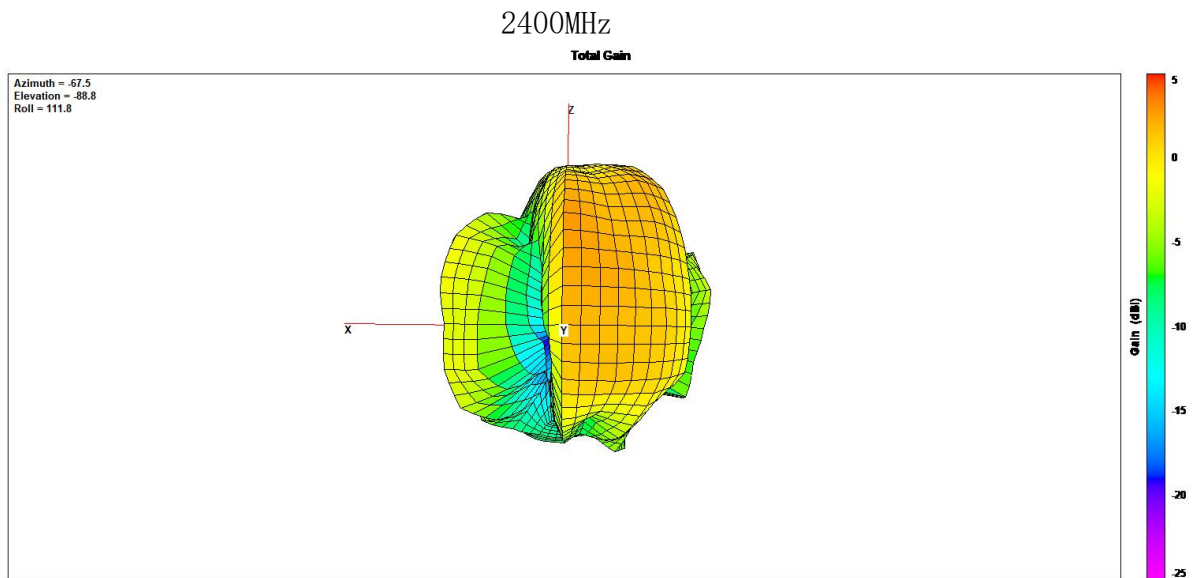


Figure1 Keyboard Antenna size

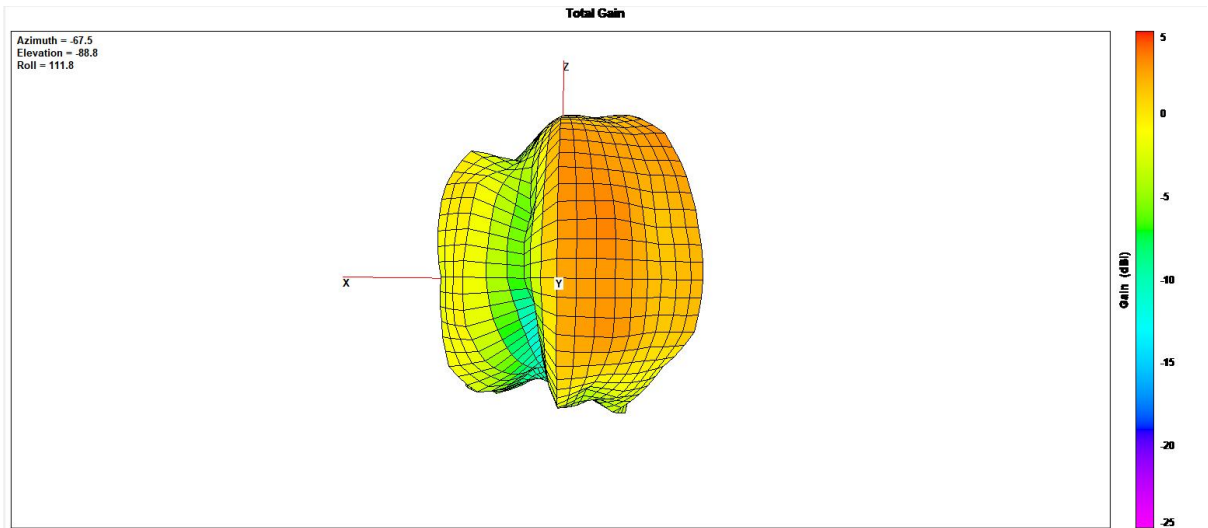
Gain and Efficiency

Frequency	Gain (dBi)	Efficiency (%)
2400MHz	2.05	38
2410MHz	2.44	45
2420MHz	2.37	44
2430MHz	2.56	47
2440MHz	3.01	48
2450MHz	3.05	45
2460MHz	2.49	43
2470MHz	2.38	41
2480MHz	2.25	44
2490MHz	2.33	38
2500MHz	2.19	39

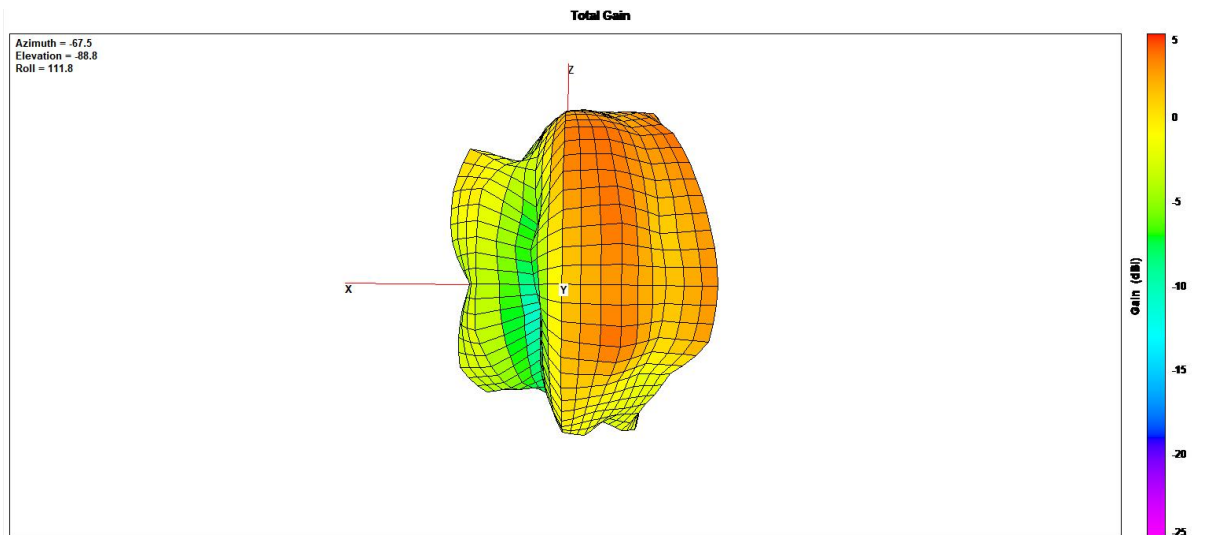
3D Pattern



2450MHz

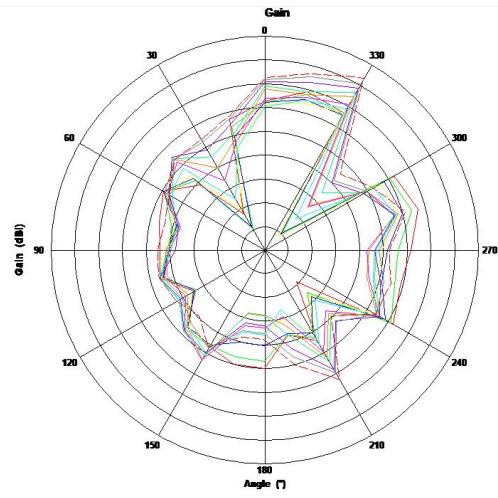


2500MHz



1D Radiation Pattern

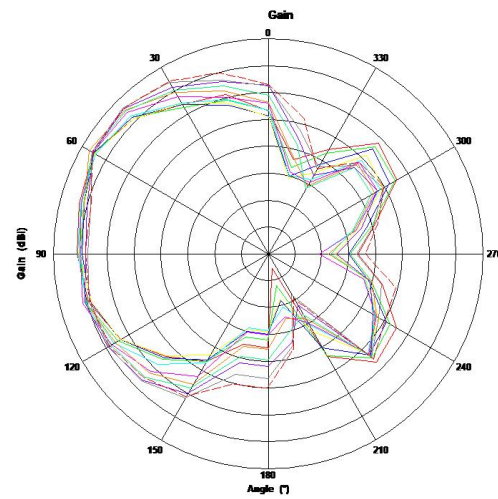
PHI=0



Max: 0
Min: -22
Scale: 2dBiv

2400 MHz
2410 MHz
2420 MHz
2430 MHz
2440 MHz
2450 MHz
2460 MHz
2470 MHz
2480 MHz
2490 MHz
2500 MHz

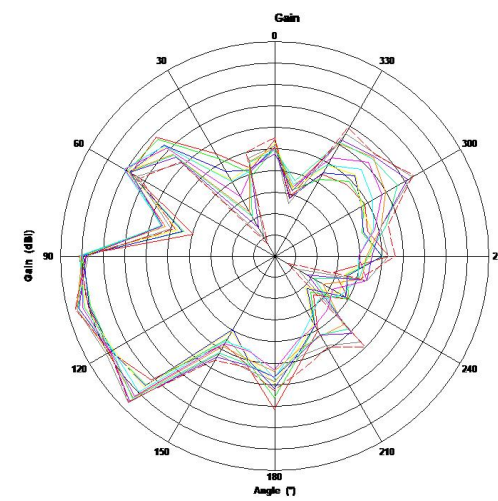
PHI=90



Max: 2
Min: -14
Scale: 2dBiv

2400 MHz
2410 MHz
2420 MHz
2430 MHz
2440 MHz
2450 MHz
2460 MHz
2470 MHz
2480 MHz
2490 MHz
2500 MHz

THETA=90



Max: 5
Min: -25
Scale: 5dBiv

2400 MHz
2410 MHz
2420 MHz
2430 MHz
2440 MHz
2450 MHz
2460 MHz
2470 MHz
2480 MHz
2490 MHz
2500 MHz