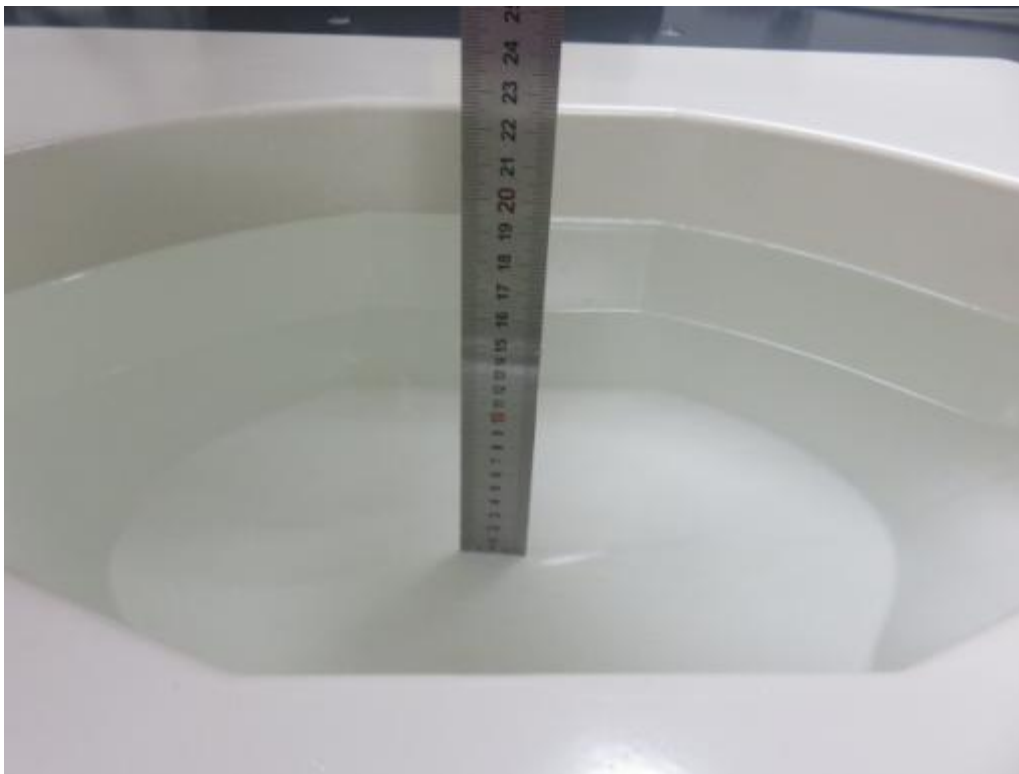


1. Photograph of Liquid Depth



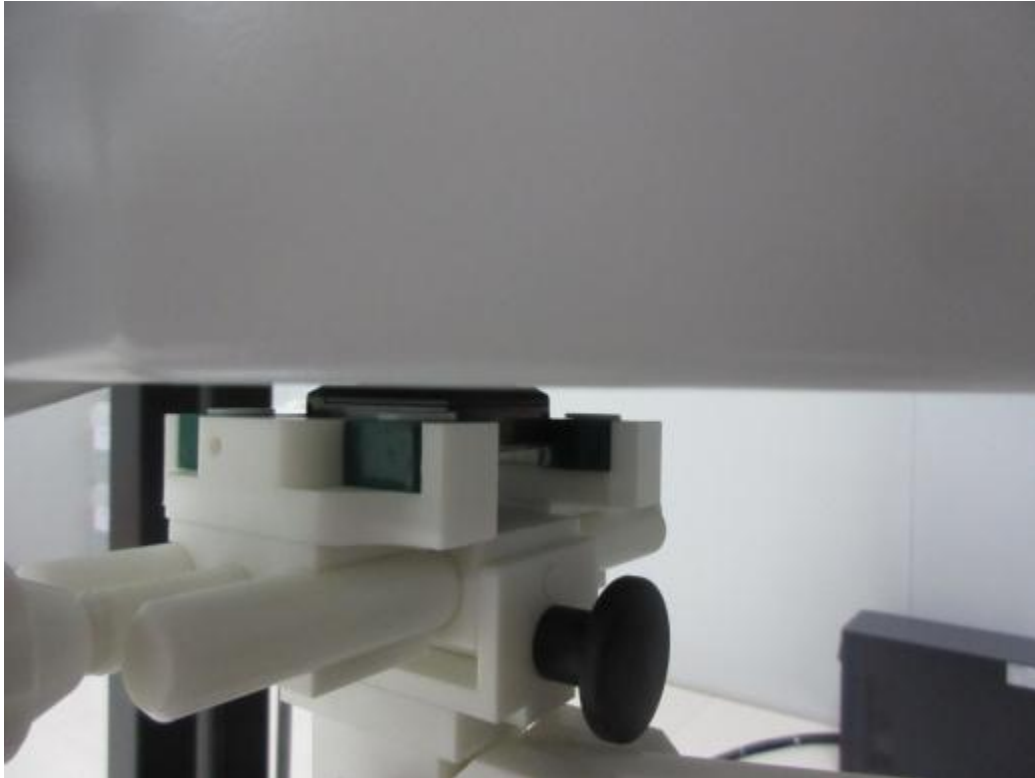
Photograph of the depth in the Body Phantom (835MHz, 16.1cm depth)



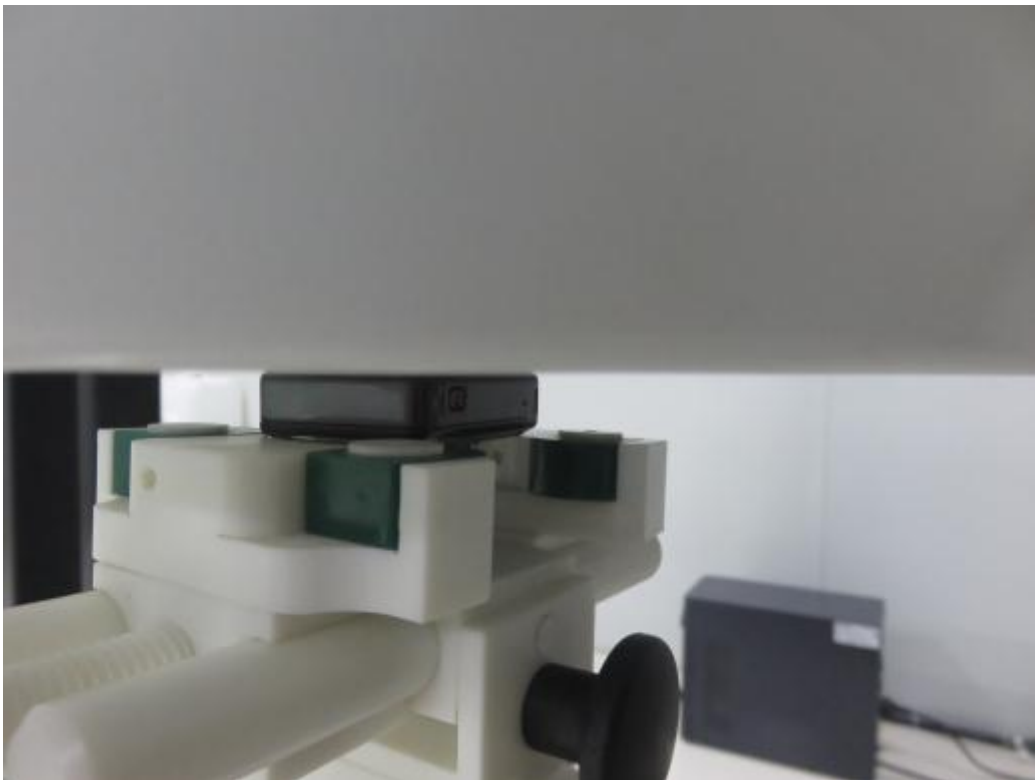
Photograph of the depth in the Body Phantom (1900MHz, 16.0cm depth)

2. Photograph of the Test Setup

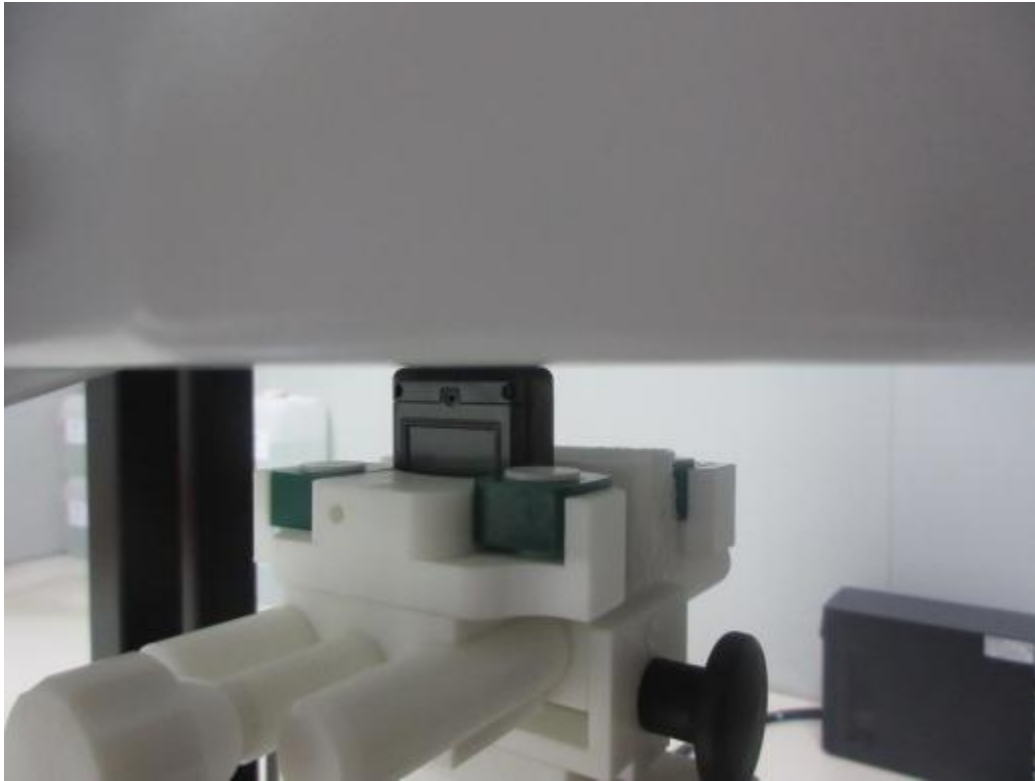
0mm body Back Side Setup Photo



0mm body Front Side Setup Photo



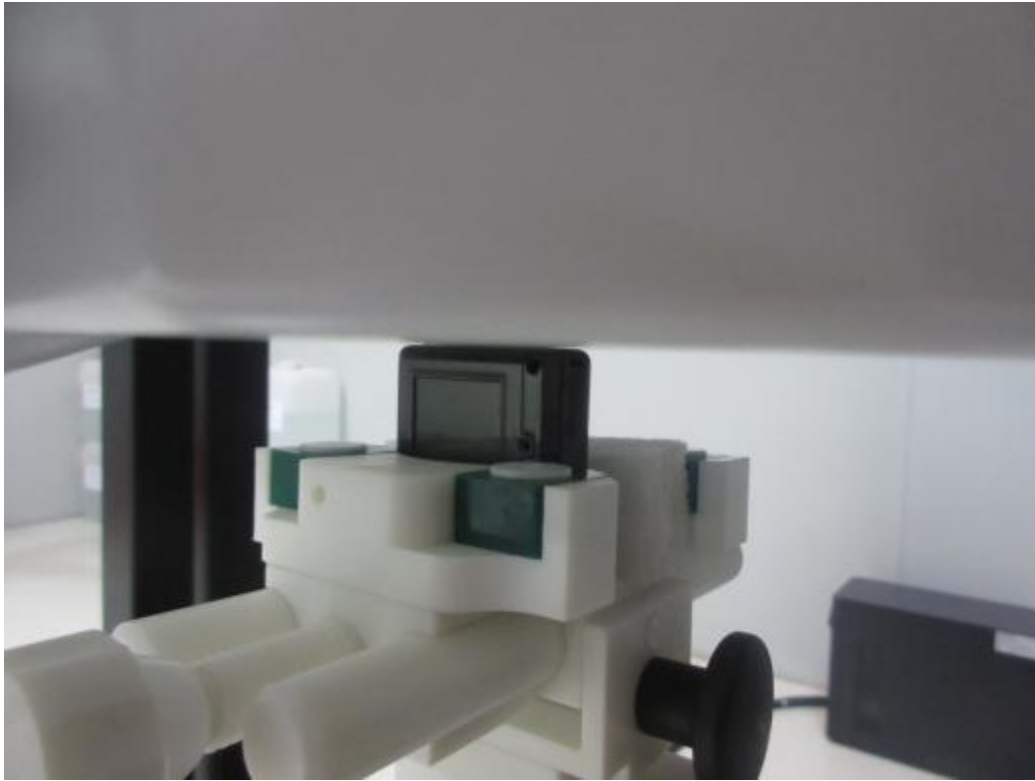
0mm body Left Side Setup Photo



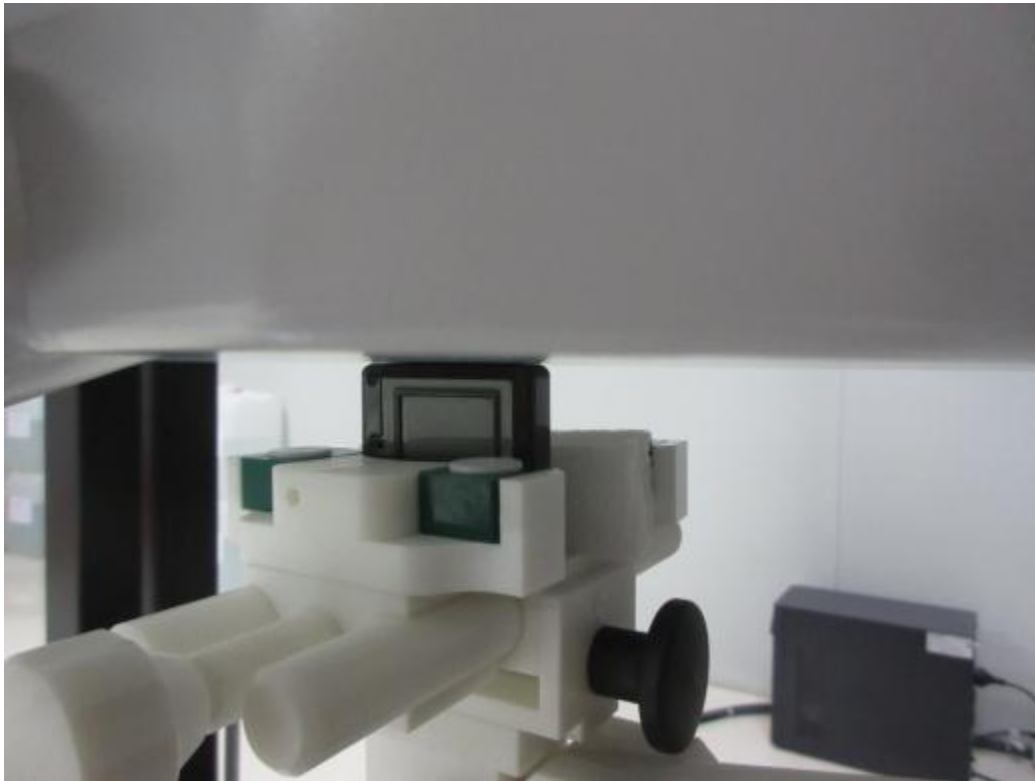
0mm body Right Side Setup Photo



0mm body Top Side Setup Photo



0mm body Bottom Side Setup Photo



3. EUT Photographs

