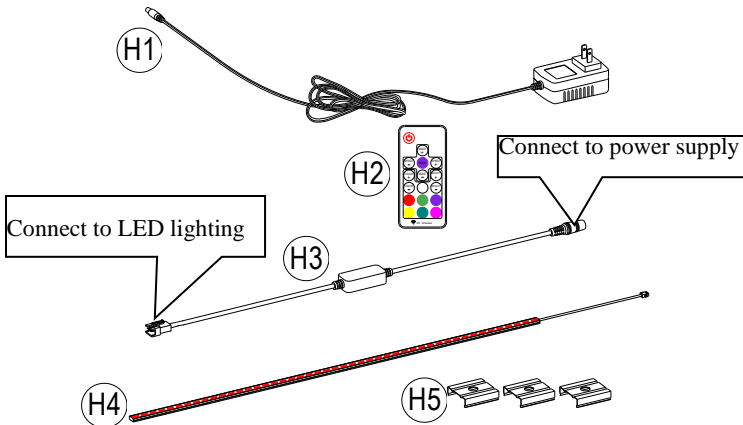


Low Voltage Lighting Systems User Guide

Please read this user guide before installing and using your Low Voltage Lighting Systems

1. THE COMPONENTS LIST



- H1> Class 2 power supply----1 pc;
- H2> RF control---1 pc;
- H3> LED control box---1 pc;
- H4> LED light Bar ---1 pcs;
- H5> Buckle ---3 pcs.

2. INSTALLATION

- 1>Screw the buckles onto the furniture.
- 2>Fit and snap the LED light bar into the buckles.
- 4>Connect the connecting wires between the parts.
- 5>Plug the Power supply plug to the socket.
- 6>Operate the Remote control to control the light bar (pull out the battery insulation before use).

3. SPECIFICATIONS

- Power supply: Input: 100-240VAC 50/60HZ Output:12V, 2A, 24W
- LED lighting: Input: DC 12V Power: Max. 24W

4. RF wireless Remote RGB LED Controller Instructions

22 Dynamic Modes	RF Remote
20 Static Colors	Ultra Slim Design
Very Smooth Effects	Dynamic Demo Mode
Speed Adjustable	Easy Remote Pairing
Brightness Adjustable	Direct Color Selecting

Functions

1.Turn On/Standby

Press this key to turn on unit or switch to standby mode. once power on, the Unit will automatically turn on and restore to previous status.

2/9. Adjusting Dynamic Mode

Switch to dynamic mode from static color, or switch between dynamic modes.

3/10. Adjusting Dynamic Speed

Adjust dynamic playing speed. Press SPEED+ to increase speed and press SPEED- to decrease. The unit will switch to dynamic mode if press this key at static color mode.

4/5. Adjusting Static Color

Switch to static color mode from dynamic mode, or switch between static colors.

6.Direct Color Select

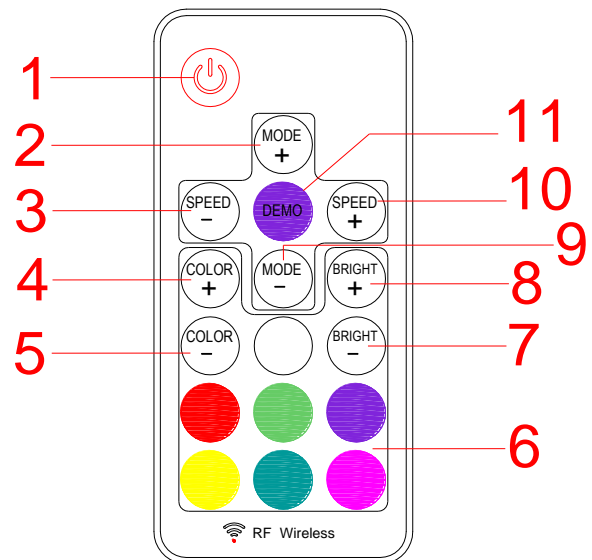
Shortcut key to static colors. When press the specific color key, LED will display the same static color. The direct colors are included in 'COLOR+' and 'COLOR-' operation.

7/8. Adjusting Brightness

Adjust static color brightness, press BRIGHT+ to increase brightness and press BRIGHT- to decrease.

11.Demo Mode

Press this key will switch to Demo mode. At demo mode, it displays red green and blue color dynamic modes in loop.



Operation

1.Using Remote Controller

Please pull out the battery insulate tape before using. The RF wireless remote signal can pass through barrier, so it's not necessary to aim at the main unit when operating.

For proper receiving remote signal, please do not install the main unit in closed parts.

2.Pairing New Remote

The remote and main unit is 1 to 1 paired as default. Furthermore, main unit can be paired to 3 remote controllers and each remote controller can be paired to any main unit.

Please do the following steps to pair new remote controller:

- 1) Plug off the power of main unit and plug in after 5 seconds.
- 2) Press 'COLOR-' and 'BRIGHT-' key together in 5 seconds after power on.

After this operation, the main unit will recognize the new remote controller.

Warning: This action cannot be undone!

3.Free Remote Pairing Mode

In some specific cases, the main unit may need to be paired to any remote controllers, please do following steps for free remote pairing mode:

- 1) Plug off the power of main unit and plug in after 5 seconds.
- 2) Press 'ON/OFF' and 'MODE+' key together in 5 seconds.

After this operation, the main unit will recognize any remote controller. To pair the main unit back to specific remote, please repeat the 'Pairing New Remote' operation.

4.Switch Output Color Sequence

The controller's default output signal sequence is

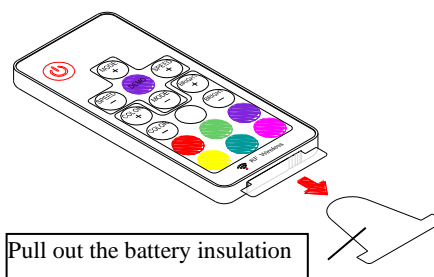
Common-Green-Red-Blue. If the LED application is in different cable sequence, the direct color keys will not match the LED color. In this case, user can adjust the output signal sequence with following steps.

- 1) Plug off the power of main unit and plug in after 5 seconds,
- 2) Press 'RED' and 'BLUE' color key together in 5 seconds after power on.

With this operation, the output sequence will switch between 6 possible combinations, the sequence will be memorized and it won't change before next same operation.

Specification

Dynamic mode	22 modes
Static color	20 colors
PWM grade	256 levels
Brightness grade	5 levels
Speed grade	10 levels
Demo mode	Yes
Direct color switchable	Yes
Output color switchable	Yes, 6 options
Working voltage	DC 5-24V
Output current	3×4A peak, 3×2A constant
Remote frequency	433.93MHz
Remote distance	<=6m at open area



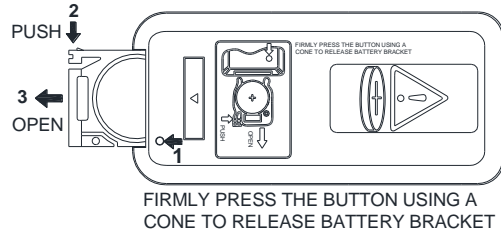
5. WARNINGS

- 1> Don't connect to non-original power supply.
- 2> Please install following installation instruction to avoid damage.
- 3> Indoor use only, working ambient temperature 4°C to 36°C.
- 4> Dry location uses only;
- 5> Prevent children or animals from chewing or swallowing parts.
- 6> Return to the dealer for repair service if abnormal, instead of dismantle.
- 7> Do not install the LED controller in closed parts.
- 8> USE ONLY WITH CLASS 2 POWER UNIT.
- 9> CAUTION: The mounting means provided with this luminaire has not been evaluated for reliability. If installed where failure of the mounting means could cause injury to persons or damage to property below, supplemental means of securement should be considered.

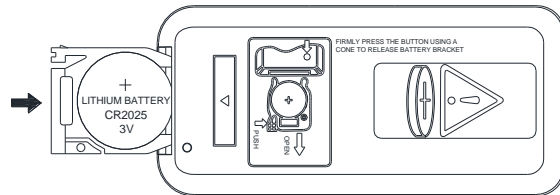
Installing the battery

The battery is supplied with the remote control. The first thing to do with the remote control is to remove the plastic sheet insulated the battery. For replacement battery, use lithium based CR2025 battery. Please follow the sequence below to replace the battery.

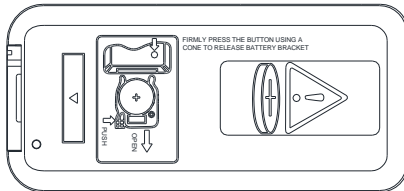
- Take out the battery bracket.



- Insert the battery with the button side into the battery bracket, making sure the battery is firmly seated.



- Press the battery bracket into the remote control, making sure it snaps into position.



- Turn the remote over and aim it towards the lighting systems unit.
- If nothing appears to happen, check to make sure the battery is installed correctly, and try again.

Battery Safety Warning

1. Remove and immediately recycle or dispose of used batteries according to local regulations and keep away from children. Do NOT dispose of batteries in household trash or incinerate.
2. Even used batteries may cause severe injury or death.
3. Call a local poison control center for treatment information.
4. Compatible battery type: CR2025.
5. Nominal battery voltage: 3 V.
6. Non-rechargeable batteries are not to be recharged.
7. Do not force discharge, recharge, disassemble, heat above 60°C or incinerate. Doing so may result in injury due to venting, leakage or explosion resulting in chemical burns.
8. Ensure the batteries are installed correctly according to polarity (+ and -).
9. Do not mix old and new batteries, different brands or types of batteries, such as alkaline, carbon-zinc, or rechargeable batteries.
10. Remove and immediately recycle or dispose of batteries from equipment not used for an extended period of time according to local regulations.
11. Always completely secure the battery compartment. If the battery compartment does not close securely, stop using the product, remove the batteries, and keep them away from children.

NOTE:

Battery disposal
Please always dispose
of batteries at a
suitable recycling
point.



! WARNING

- **INGESTION HAZARD:** This product contains a button cell or coin battery.
- **DEATH** or serious injury can occur if ingested.
- A swallowed button cell or coin battery can cause **Internal Chemical Burns** in as little as **2 hours**.
- **KEEP** new and used batteries **OUT OF REACH** of **CHILDREN**.
- **Seek immediate medical attention** if a battery is suspected to be swallowed or inserted inside any part of the body.



FCC Caution.

This device complies with part 15 of the FCC Rules. Operation is subject to the following two conditions:

- (1) This device may not cause harmful interference, and
- (2) this device must accept any interference received, including interference that may cause undesired operation.

Any Changes or modifications not expressly approved by the party responsible for compliance could void the user's authority to operate the equipment.

Note: This equipment has been tested and found to comply with the limits for a Class B digital device, pursuant to part 15 of the FCC Rules. These limits are designed to provide reasonable protection against harmful interference in a residential installation. This equipment generates uses and can radiate radio frequency energy and, if not installed and used in accordance with the instructions, may cause harmful interference to radio communications. However, there is no guarantee that interference will not occur in a particular installation. If this equipment does cause harmful interference to radio or television reception, which can be determined by turning the equipment off and on, the user is encouraged to try to correct the interference by one or more of the following measures:

- Reorient or relocate the receiving antenna.
- Increase the separation between the equipment and receiver.
- Connect the equipment into an outlet on a circuit different from that to which the receiver is connected.
- Consult the dealer or an experienced radio/TV technician for help.

The device has been evaluated to meet general RF exposure requirement. The device can be used in portable exposure condition without restriction.