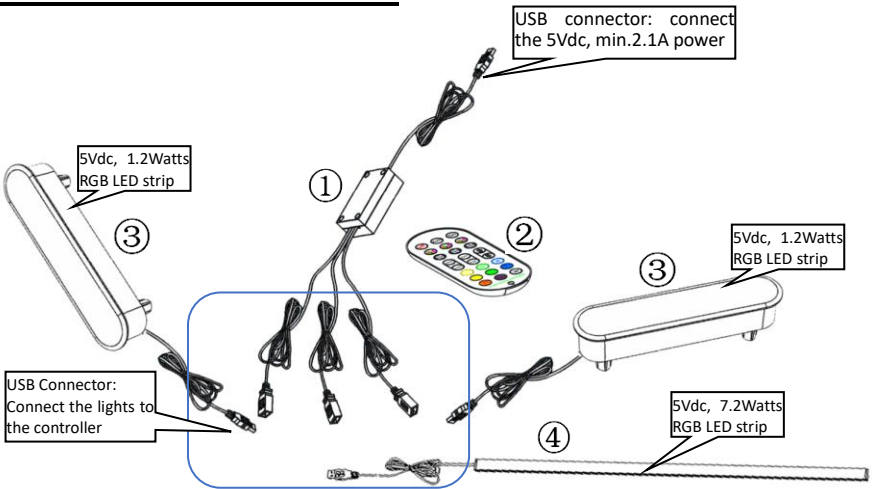


# Low Voltage Lighting Systems User Guide

Please read this user guide before installing and using your Low Voltage Lighting Systems

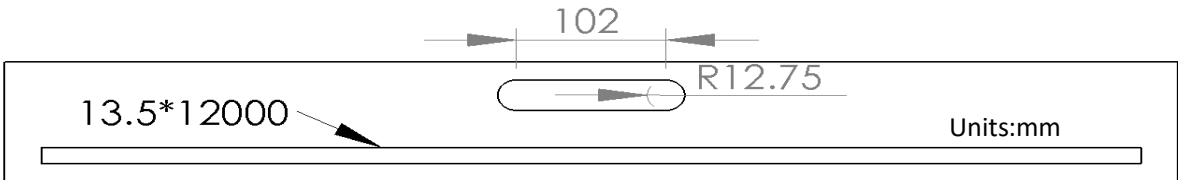
## 1. THE COMPONENTS LIST

- 1> LED controller ----1pcs;
- 2> RF control---1pcs;
- 3> LED lighting ---2pcs;
- 4> LED strip---1pcs;

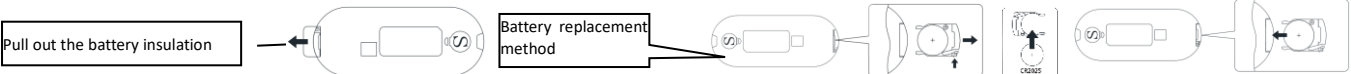


## 2. INSTALLATION

1>Slotted hole: according to the following dimensions;



- 2>Fix the light in the slotted hole;
- 3>Screw the LED controller on furniture, The controller can't be installed in closed metal parts;
- 4>Connect the lights to the controller;
- 5>Connect the controller to the 5Vdc power supply;



6>Operate the Remote control to control the light bar(pull out the battery insulation before use);

## 3. SPECIFICATIONS

- Input :5Vdc, Min.2.1A
- LED lighting: Input: DC 5V Power: Max. 10W

## 4. RF wireless Remote RGB LED Controller Instructions

### Music Remote(Advanced Version)



Before using the remote control pull out the bottom plastic piece

### Remote control pairing instruction:

1. Connect the light fixture to a USB port. Press and hold the "ON" button on the remote control within 5 seconds after the LED lights are powered on. The LED lights flash, indicating it is in searching and pairing mode.
2. The LED lights stop flashing, indicating that the remote control has been successfully paired with the light fixture.
3. This light fixture will not be controlled by another remote control until you perform the above pairing operation again.



### APP mode

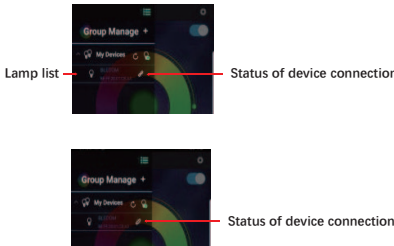
APP name is "duoCo Strip". Please search for and install the APP in the QR code.



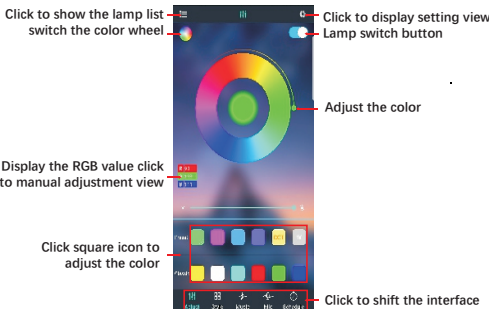
### Functions are listed as follows:

1. Adjust the brightness and color temperature of 16 million kinds of colors for monochrome LED strip.
2. Six color sequence modes to choose from: Static, Strobe Flash, Gradual Change, Cross-Fade, and Jump Change, each with multiple color modes.
3. In music sync mode, the LED lights can change color and speed to sync according to the rhythm of the music.
4. In External Microphone mode: the Built-in high-sensitivity microphone can adjust the speed and color of the lighting to match the sounds around you.
5. Schedule: Select the date and time to turn on / off the timing light. The light will turn on / off for the time you set.

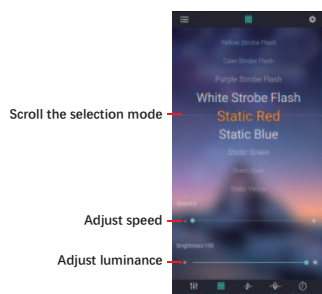
(1) Click to show the lamp list, view lamp list:



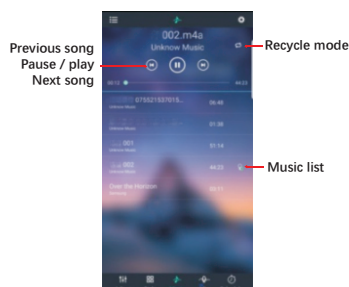
(2) Switch to color and brightness interface:



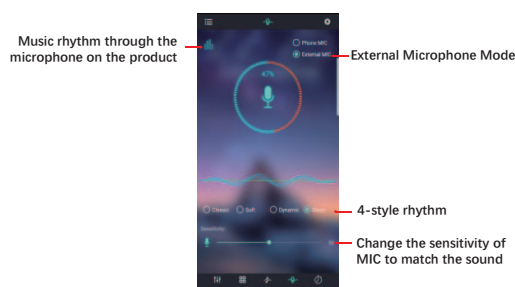
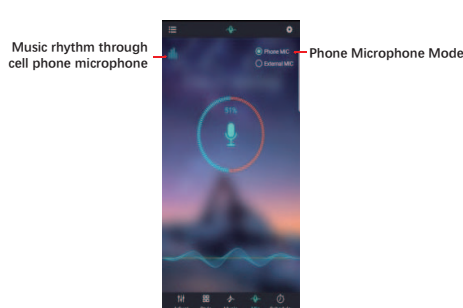
(3) Switch to the mode interface:



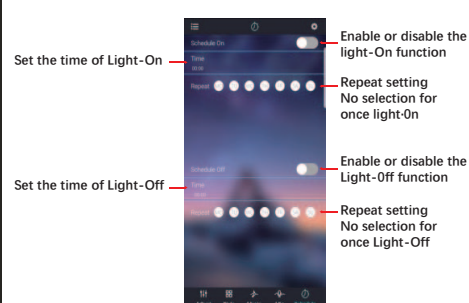
(4) Switch to the music rhythm:



(5) Switch to the microphone rhythm interface:



(6) Switch to the schedule:



(7) Switch to the modify pin sequence interface:



## Local music:

1. Download local music on android phone:

- (1) Android phone use music players to download songs or copy songs from computers to mobile phones.
- (2) Restart duoCol Strip and switch to music Rhythm Interface to see the newly imported music files

2. Download local music on iPhone

- (1) Install iTunes software on your computer (Apple or Windows).
- (2) Log in to iTunes with the same Apple ID account on the iPhone.
- (3) Use iTunes to import downloaded music files on your computer.
- (4) The imported music files will be synchronized to the iPhone in real time.
- (5) Restart and switch to music Rhythm Interface to see the newly imported music files.

## FCC Statement:

This device complies with part 15 of the FCC Rules. Operation is subject to the following two conditions: (1) this device may not cause harmful interference, and (2) this device must accept any interference received, including interference that may cause undesired operation.

Changes or Modifications not expressly approved by the party responsible could void the user's authority to operate this device.

NOTE: This equipment has been tested and found to comply with the limits for a Class B digital device, pursuant to Part 15 of the FCC Rules. These limits are designed to provide reasonable protection against harmful interference in a residential installation. This equipment generates, uses and can radiate radio frequency energy and, if not installed and used in accordance with the instructions, may cause harmful interference to radio communications. However, there is no guarantee that interference will not occur in a particular installation.

*If this equipment does cause harmful interference to radio or television reception, which can be determined by turning the equipment off and on, the user is encouraged to try to correct the interference by one or more of the following measures :*

- Reorient or relocate the receiving antenna .*
- Increase the separation between the equipment and receiver .*
- Connect the equipment into an outlet on a circuit different from that to which the receiver is connected .*
- Consult the dealer or an experienced radio/TV technician for help .*

*RF Exposure statement:*

*The device has been evaluated to meet general RF exposure requirement*

***IC statement:***

*This device complies with Industry Canada Licence-exempt RSSs. Operation is subject to the following two conditions: (1) this device may not cause harmful interference, and (2) this device must accept any interference, including interference that may cause undesired operation of the device.*

*Le présent appareil est conforme aux CNR d'Industrie Canada applicables aux appareils radio exempts de licence. L'exploitation est autorisée aux deux conditions suivantes : (1) l'appareil ne doit pas produire de brouillage, et (2) l'utilisateur de l'appareil doit accepter tout brouillage radioélectrique subi, même si le brouillage est susceptible d'en compromettre le fonctionnement.*

*RF Exposure statement :*

*the device has been evaluated to meet general RF exposure requirement.*