

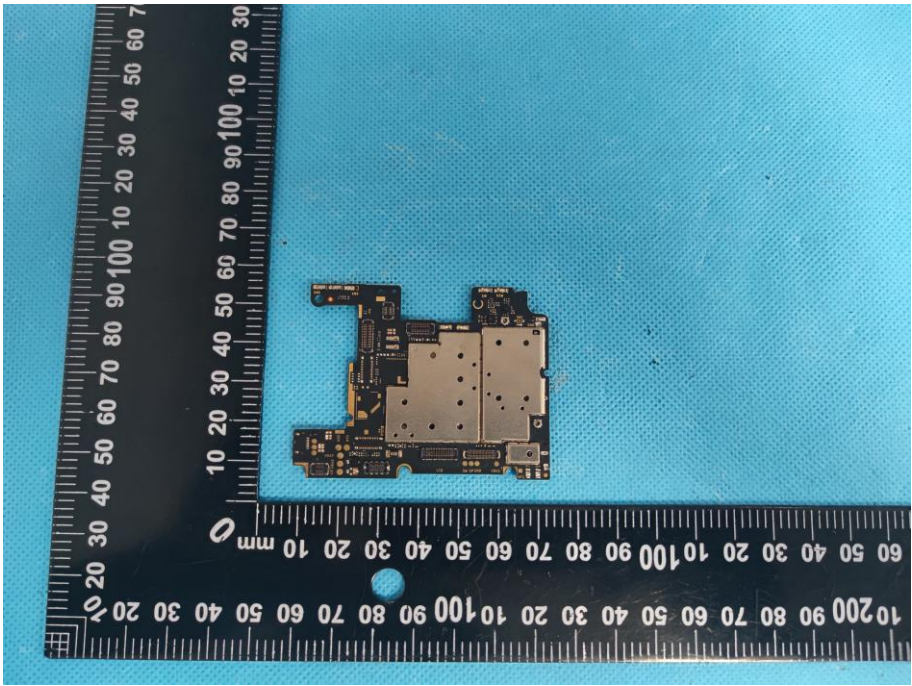
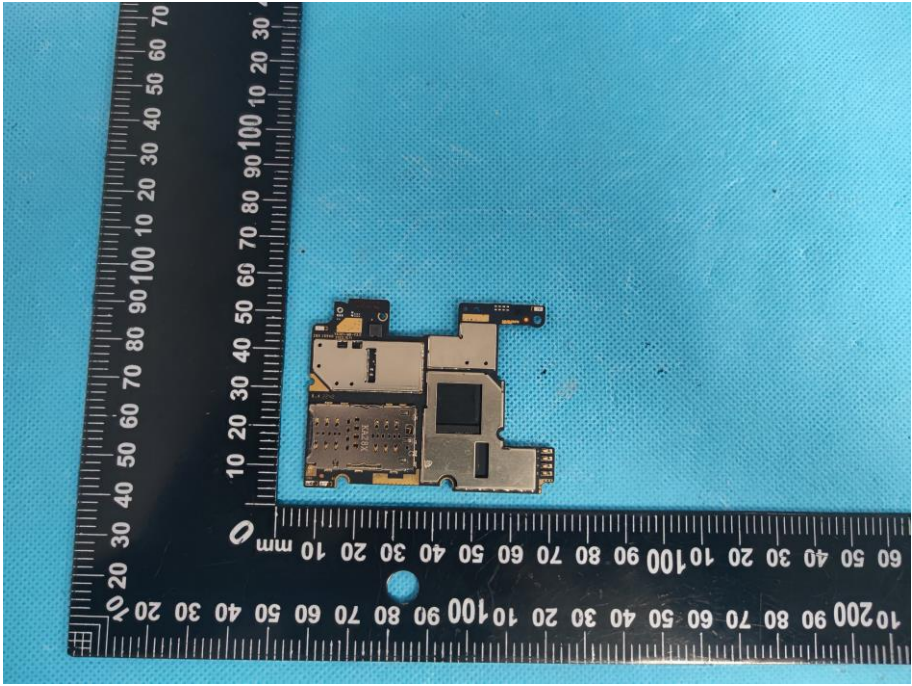
EXHIBIT 3 - EUT INTERNAL PHOTOGRAPHS

EUT Housing and Board View 1

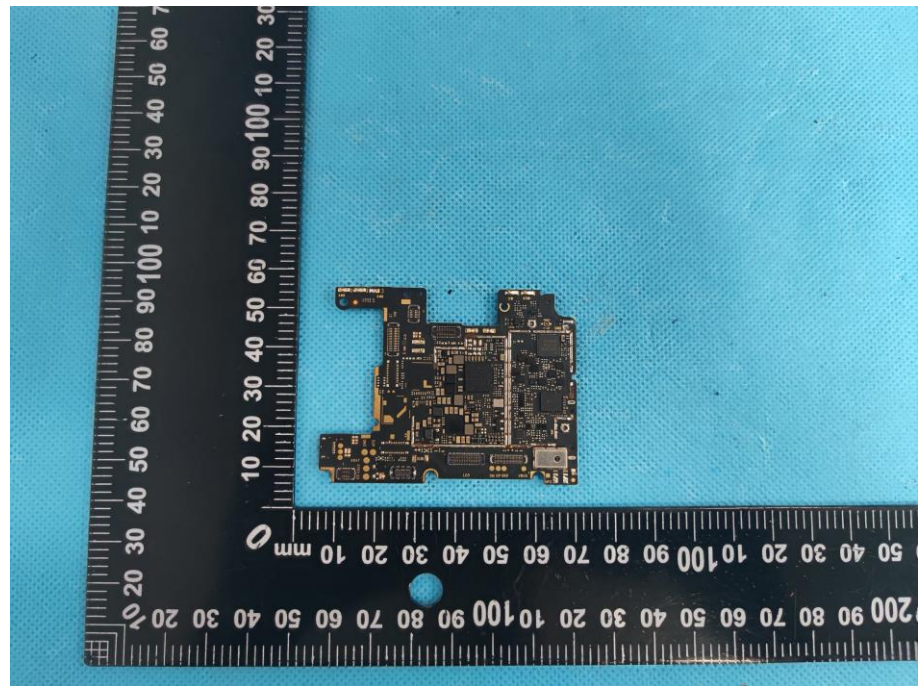


EUT Housing and Board View 2

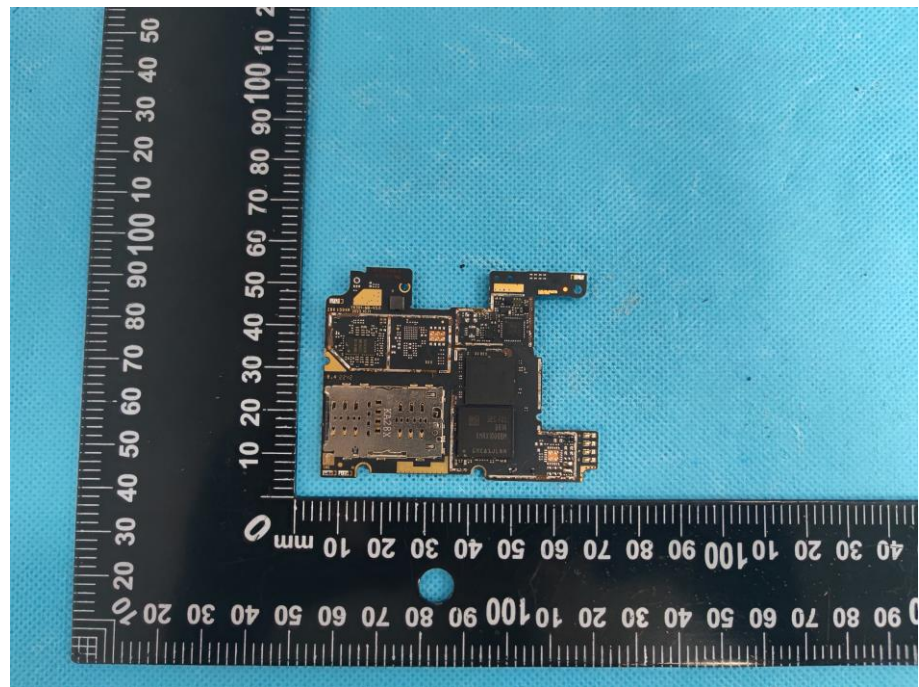


<p>Solder Board-Component View 1</p>	 <p>A photograph of a small, rectangular printed circuit board (PCB) component, likely a solder mask or a small board, placed on a blue textured surface. The component is positioned next to a black L-shaped ruler for scale. The ruler has white markings in millimeters and centimeters. The component is dark in color with some lighter areas, possibly indicating solder or specific components. The ruler shows the component is approximately 40mm wide and 30mm high.</p>
<p>Solder Board-Component View 2</p>	 <p>A photograph of the same small, rectangular PCB component from a different perspective, showing its top surface. It is placed on the same blue textured surface next to the same black L-shaped ruler. The component's shape and size are consistent with View 1, appearing to be approximately 40mm wide and 30mm high. The top surface shows various components and traces.</p>

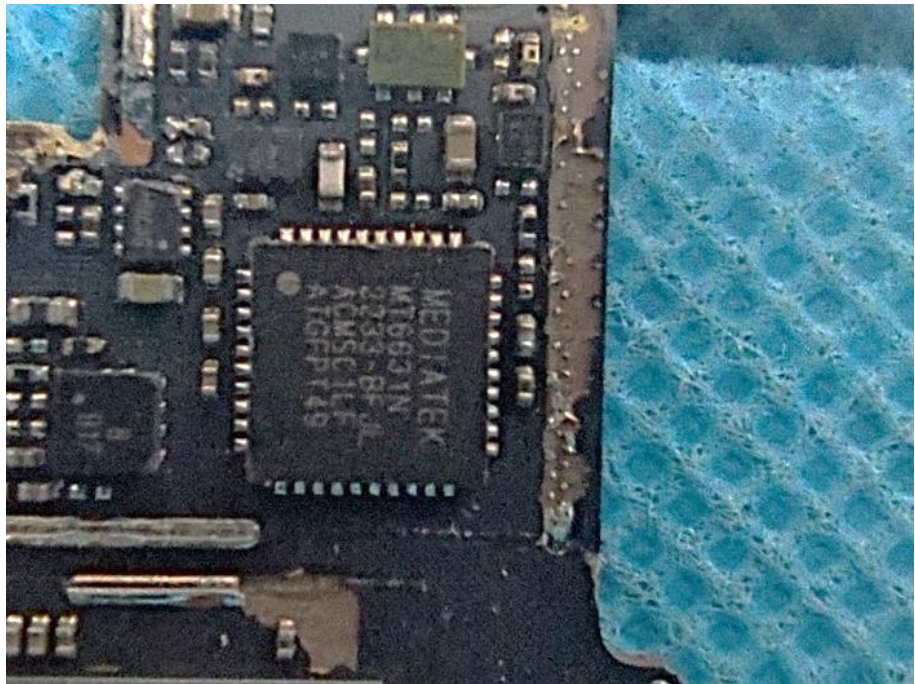
**Solder
Board-Component
View 3**



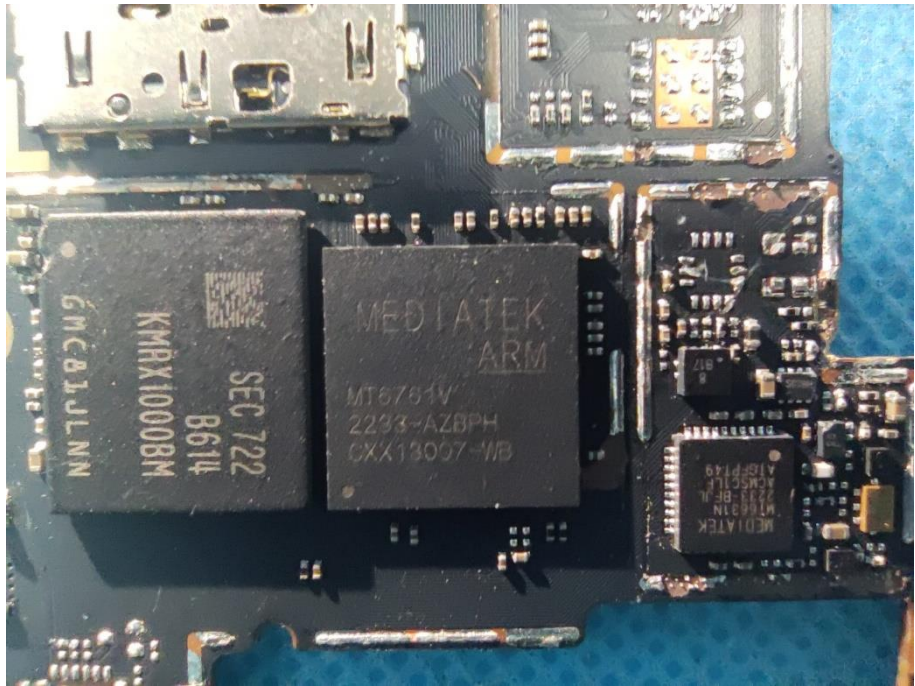
**Solder
Board-Component
View 4**

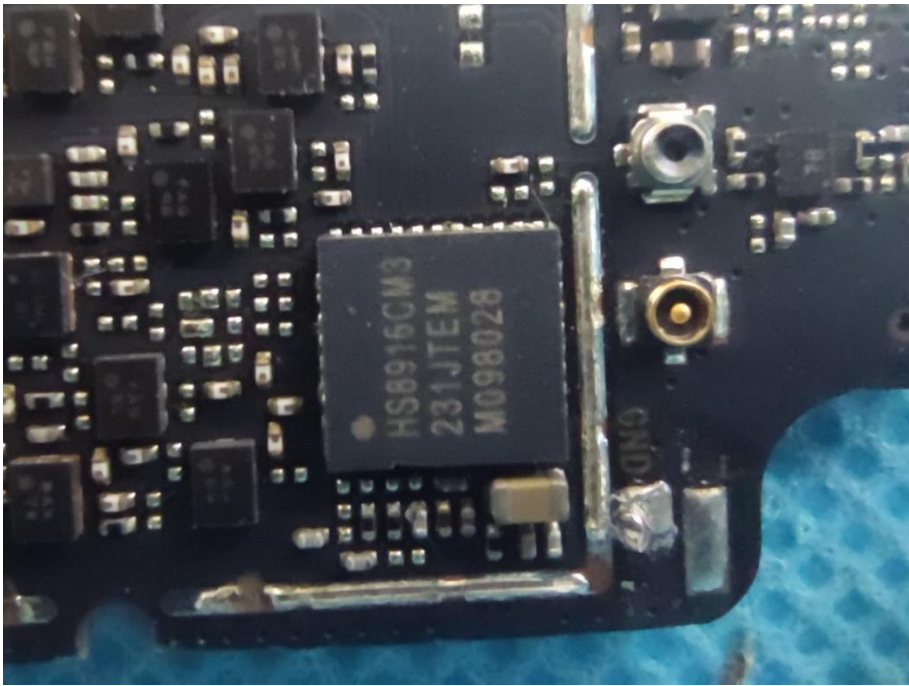
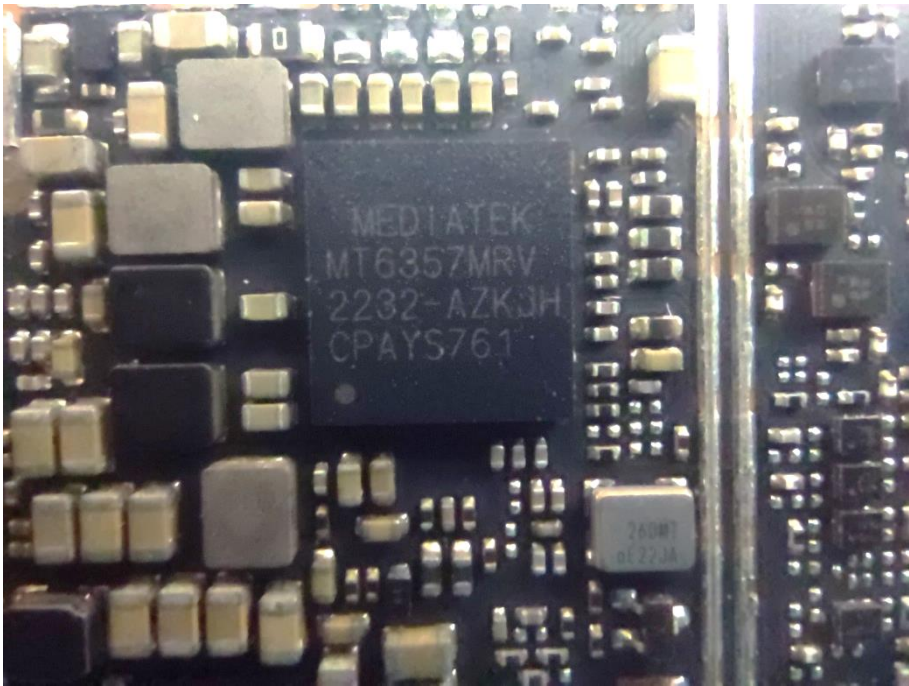


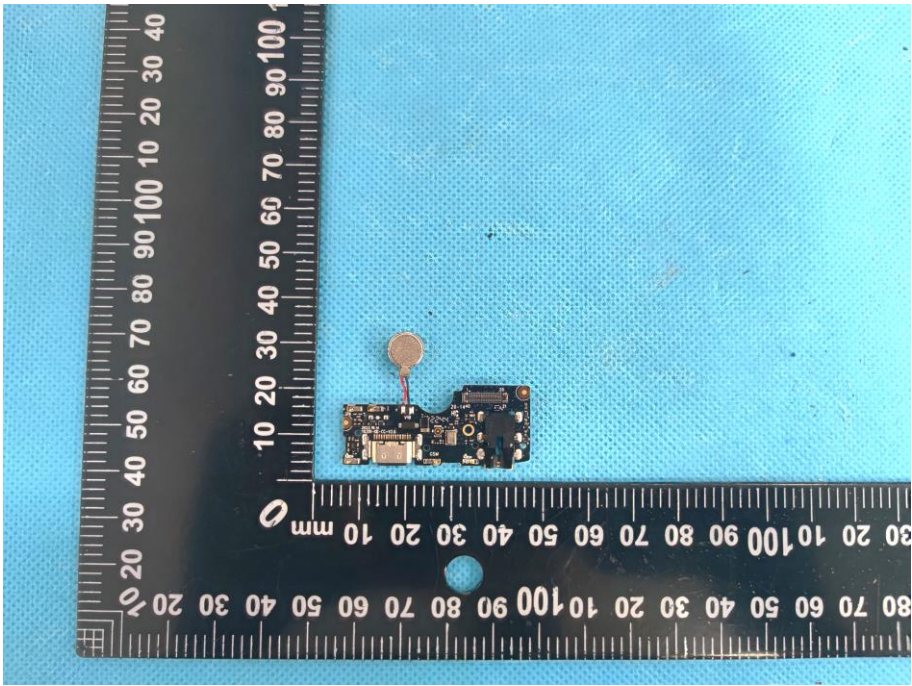
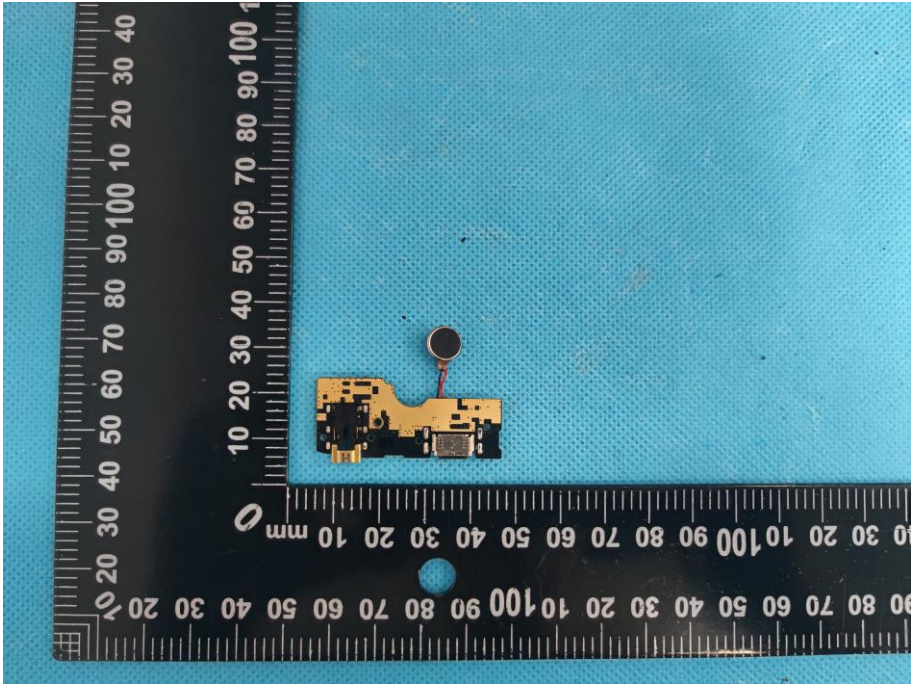
**Solder
Board-Component
View 5**



**Solder
Board-Component
View 6**



<p>Solder Board-Component View 7</p>	
<p>Solder Board-Component View 8</p>	

<p>Solder Board-Component View 9</p>	 A photograph of a small, dark-colored printed circuit board (PCB) component with a circular silver pad on top. The component is placed on a blue textured surface next to a black ruler with white markings. The ruler shows measurements in millimeters, with the component positioned between the 10 mm and 30 mm marks. The component is oriented vertically.
<p>Solder Board-Component View 10</p>	 A photograph of the same PCB component from a different perspective. The circular silver pad is now on the bottom. The component is placed on the same blue textured surface next to the same black ruler. The component is oriented vertically, with the ruler showing measurements between 10 mm and 30 mm.

