

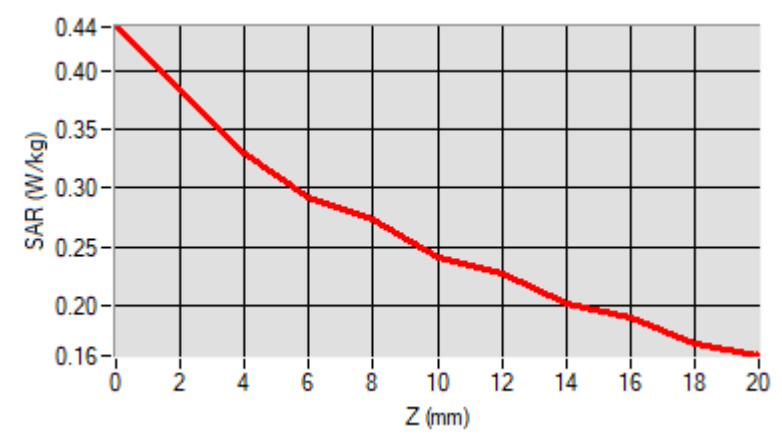
Maximum location: X=6.00, Y=-25.00

D. SAR 1g & 10g

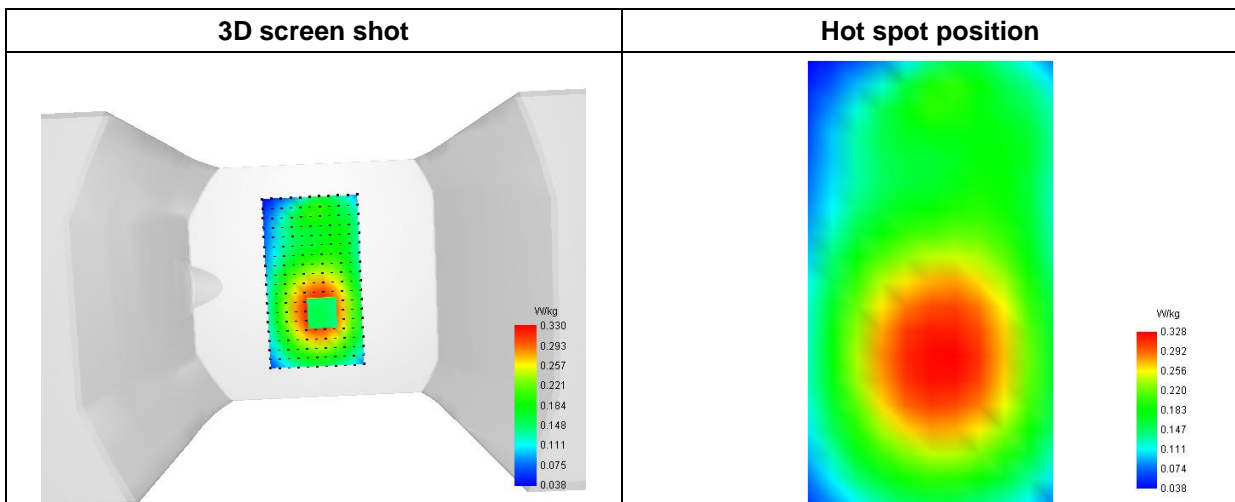
SAR 10g (W/Kg)	0.244459
SAR 1g (W/Kg)	0.320372

E. Z Axis Scan

Z (mm)	0.00	4.00	6.00	8.00	10.00	12.00	14.00	16.00	18.00
SAR (W/Kg)	0.4371	0.3300	0.2923	0.2727	0.2415	0.2270	0.2012	0.1895	0.1678



F. 3D Image



# MEASUREMENT 34/55

Type: Phone measurement (Complete)  
 Date of measurement: 2023-03-06  
 Measurement duration: 12 minutes 3 seconds

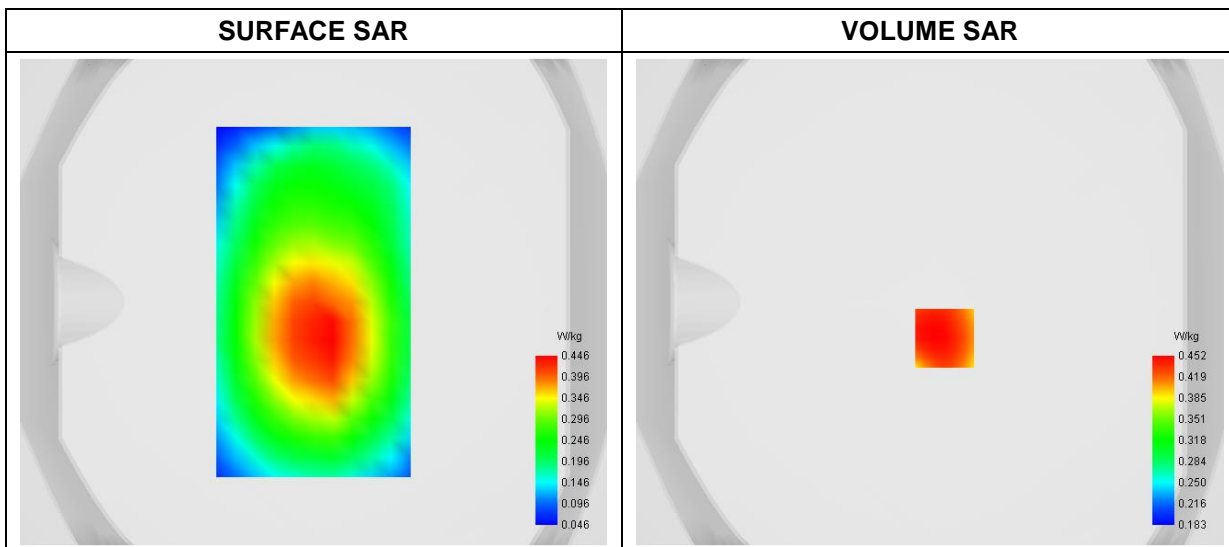
### A. Experimental conditions

<b>Area Scan</b>	dx=8mm dy=8mm
<b>Zoom Scan</b>	dx=4mm dy=4mm dz=2mm
<b>Phantom</b>	Flat Plane
<b>Device Position</b>	Back
<b>Band</b>	LTE Band 17
<b>Channels</b>	QPSK, 10MHz, 1RB, Middle
<b>Signal</b>	Duty Cycle 1:1

### B. SAR Measurement Results

<b>Frequency (MHz)</b>	710.000000
<b>Relative Permittivity (real part)</b>	41.901634
<b>Conductivity (S/m)</b>	0.893645
<b>Power Variation (%)</b>	1.650000
<b>Ambient Temperature</b>	23.2
<b>Liquid Temperature</b>	23.2

### C. SAR Surface and Volume



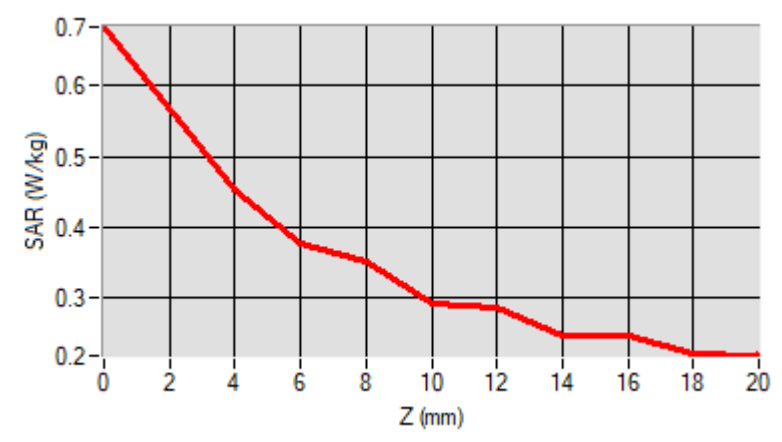
Maximum location: X=6.00, Y=-15.00

D. SAR 1g & 10g

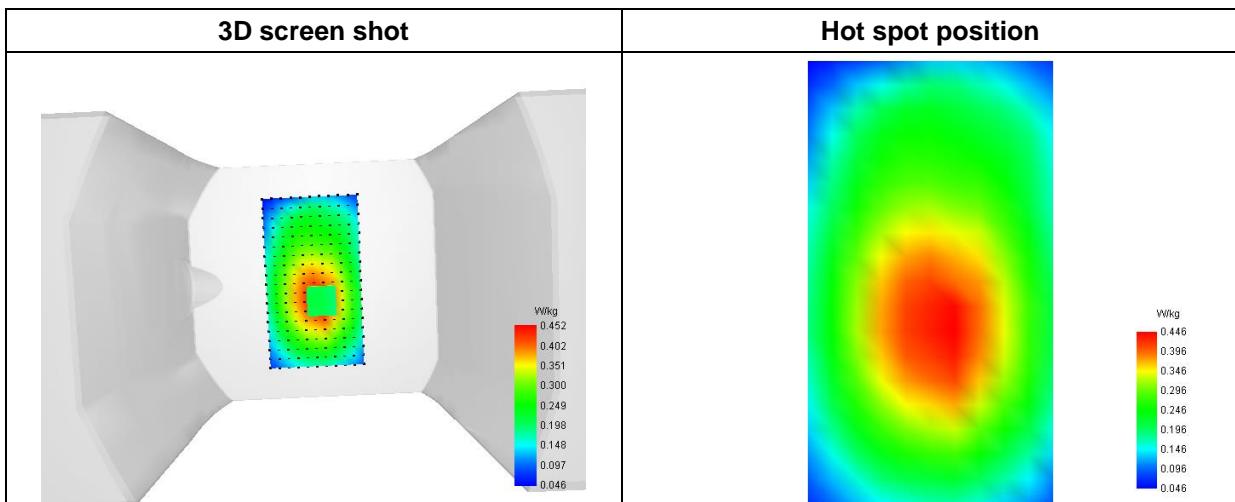
SAR 10g (W/Kg)	0.337490
SAR 1g (W/Kg)	0.456853

E. Z Axis Scan

Z (mm)	0.00	4.00	6.00	8.00	10.00	12.00	14.00	16.00	18.00
SAR (W/Kg)	0.6838	0.4523	0.3764	0.3496	0.2904	0.2861	0.2442	0.2460	0.2185



F. 3D Image



# MEASUREMENT 35/56

Type: Phone measurement (Complete)  
 Date of measurement: 2023-03-08  
 Measurement duration: 12 minutes 3 seconds

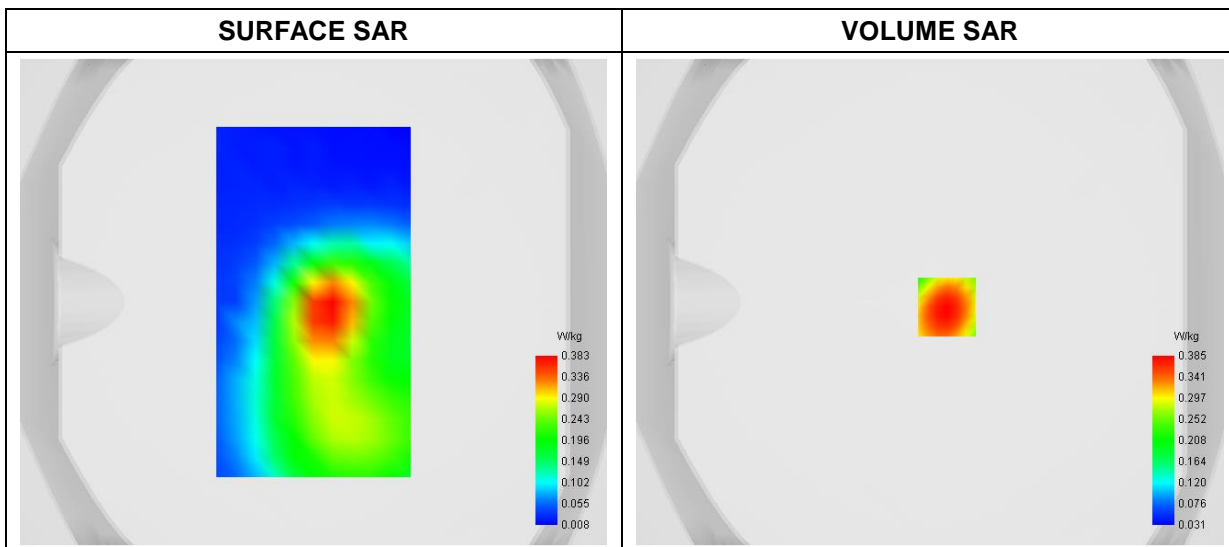
### A. Experimental conditions

<b>Area Scan</b>	dx=8mm dy=8mm
<b>Zoom Scan</b>	dx=4mm dy=4mm dz=2mm
<b>Phantom</b>	Flat Plane
<b>Device Position</b>	Back
<b>Band</b>	LTE Band 25
<b>Channels</b>	QPSK, 20MHz, 1RB, High
<b>Signal</b>	Duty Cycle 1:1

### B. SAR Measurement Results

<b>Frequency (MHz)</b>	1905.000000
<b>Relative Permittivity (real part)</b>	39.582631
<b>Conductivity (S/m)</b>	1.383625
<b>Power Variation (%)</b>	1.860000
<b>Ambient Temperature</b>	23.5
<b>Liquid Temperature</b>	23.5

### C. SAR Surface and Volume



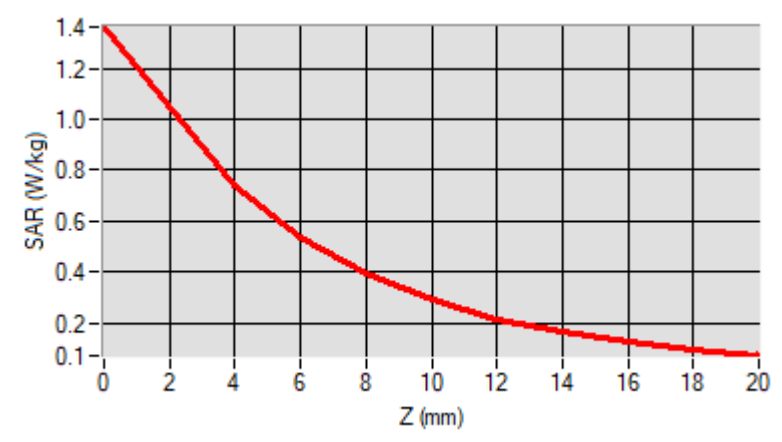
Maximum location: X=7.00, Y=-2.00

D. SAR 1g & 10g

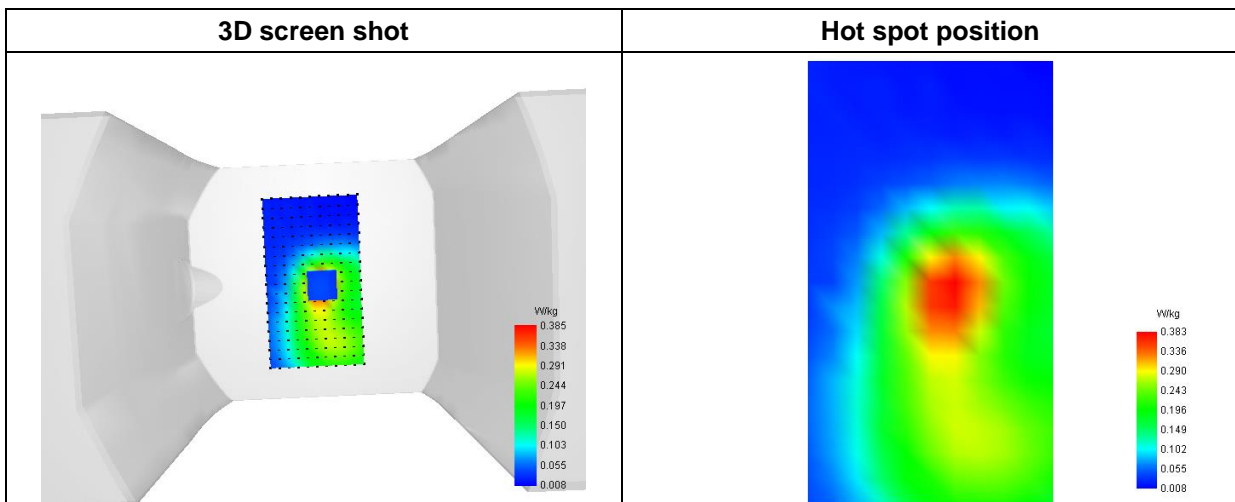
SAR 10g (W/Kg)	0.363772
SAR 1g (W/Kg)	0.700885

E. Z Axis Scan

Z (mm)	0.00	4.00	6.00	8.00	10.00	12.00	14.00	16.00	18.00
SAR (W/Kg)	1.3629	0.7377	0.5390	0.3932	0.2901	0.2169	0.1643	0.1255	0.0957



F. 3D Image



# MEASUREMENT 36/57

Type: Phone measurement (Complete)  
 Date of measurement: 2023-03-06  
 Measurement duration: 12 minutes 3 seconds

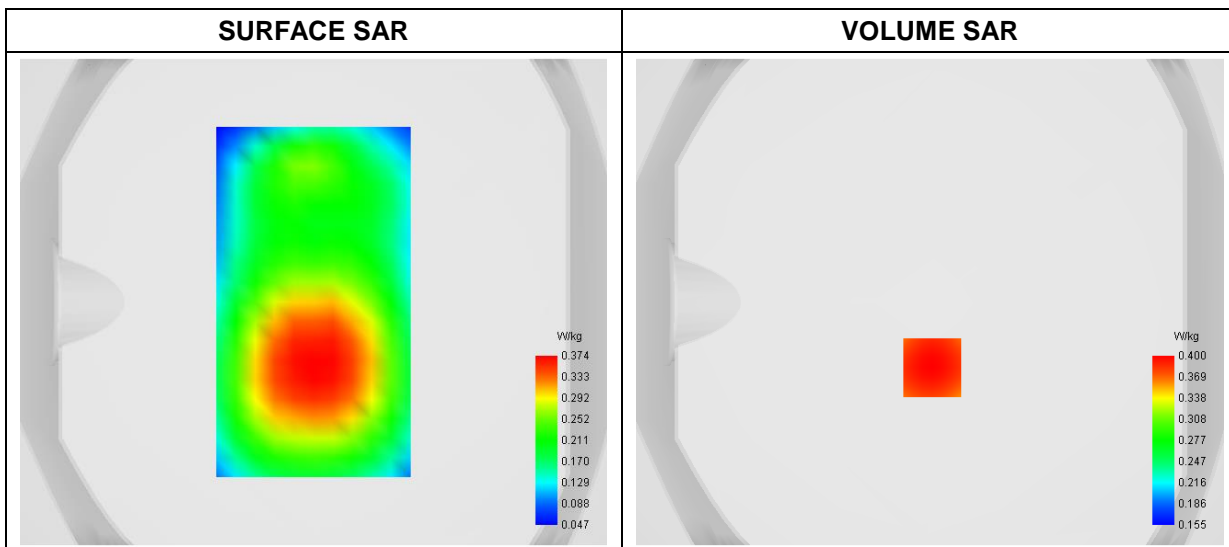
**A. Experimental conditions**

<b>Area Scan</b>	dx=8mm dy=8mm
<b>Zoom Scan</b>	dx=4mm dy=4mm dz=2mm
<b>Phantom</b>	Flat Plane
<b>Device Position</b>	Back
<b>Band</b>	LTE Band 26(814-824MHz)
<b>Channels</b>	QPSK, 10MHz, 1RB, Middle
<b>Signal</b>	Duty Cycle 1:1

**B. SAR Measurement Results**

<b>Frequency (MHz)</b>	819.000000
<b>Relative Permittivity (real part)</b>	42.063537
<b>Conductivity (S/m)</b>	0.884058
<b>Power Variation (%)</b>	1.580000
<b>Ambient Temperature</b>	23.5
<b>Liquid Temperature</b>	23.5

**C. SAR Surface and Volume**



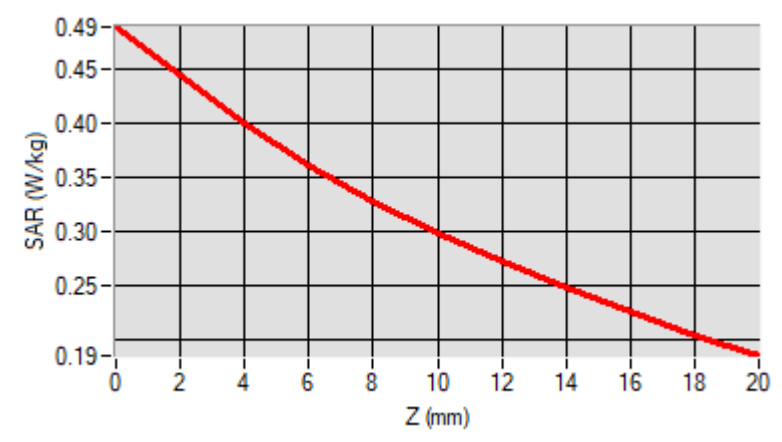
Maximum location: X=1.00, Y=-27.00

D. SAR 1g & 10g

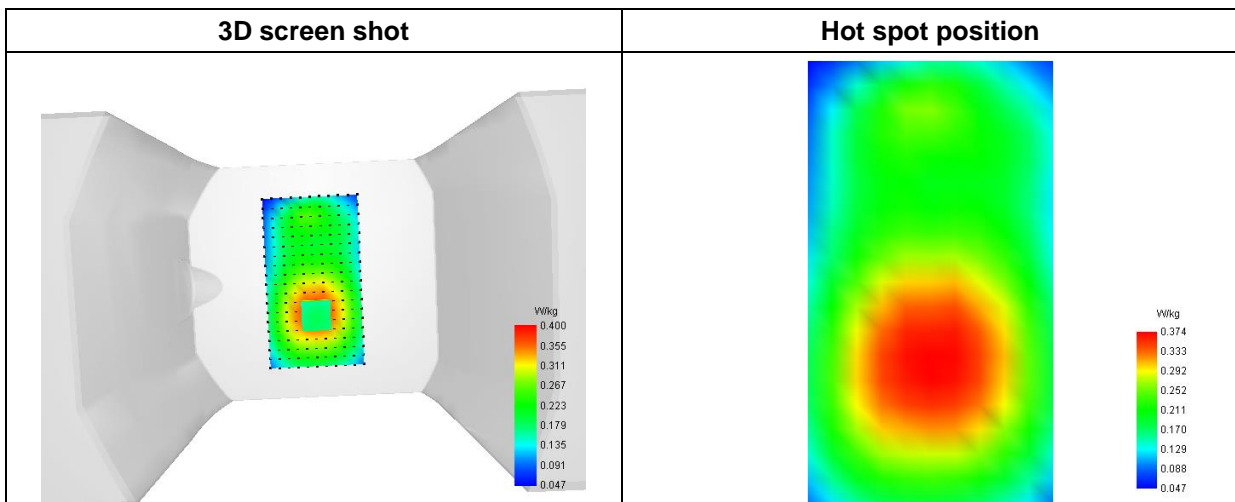
SAR 10g (W/Kg)	0.294336
SAR 1g (W/Kg)	0.388533

E. Z Axis Scan

Z (mm)	0.00	4.00	6.00	8.00	10.00	12.00	14.00	16.00	18.00
SAR (W/Kg)	0.4889	0.3995	0.3622	0.3287	0.2989	0.2722	0.2479	0.2257	0.2051



F. 3D Image



# MEASUREMENT 37/58

Type: Phone measurement (Complete)  
 Date of measurement: 2023-03-06  
 Measurement duration: 12 minutes 3 seconds

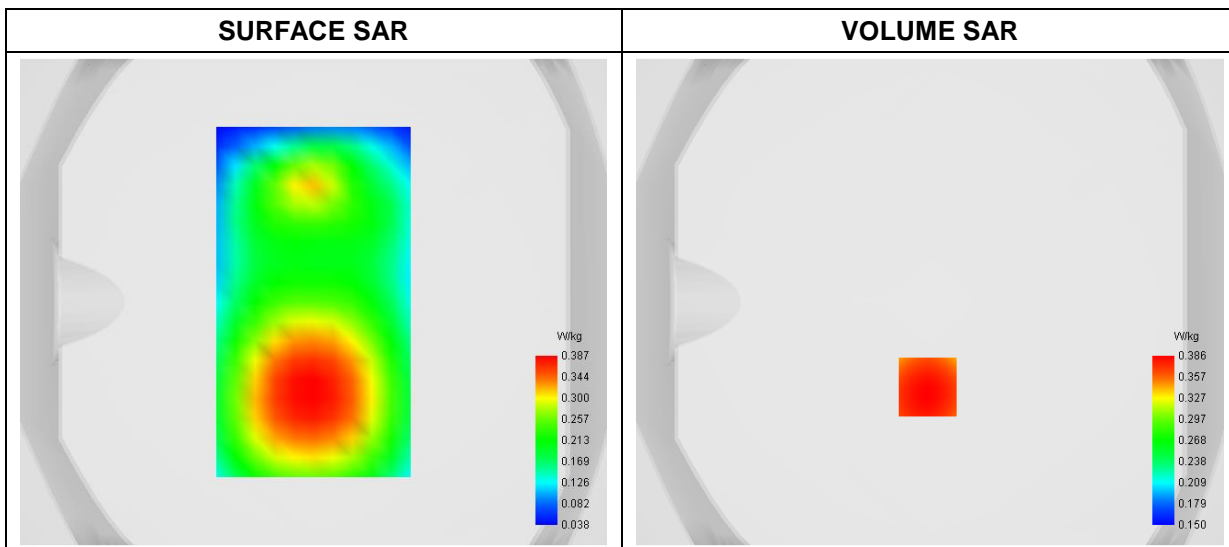
### A. Experimental conditions

<b>Area Scan</b>	dx=8mm dy=8mm
<b>Zoom Scan</b>	dx=4mm dy=4mm dz=2mm
<b>Phantom</b>	Flat Plane
<b>Device Position</b>	Back
<b>Band</b>	LTE Band 26(824-849MHz)
<b>Channels</b>	QPSK, 15MHz, 1RB, Low
<b>Signal</b>	Duty Cycle 1:1

### B. SAR Measurement Results

<b>Frequency (MHz)</b>	831.500000
<b>Relative Permittivity (real part)</b>	42.062447
<b>Conductivity (S/m)</b>	0.882925
<b>Power Variation (%)</b>	-1.860000
<b>Ambient Temperature</b>	23.2
<b>Liquid Temperature</b>	23.2

### C. SAR Surface and Volume





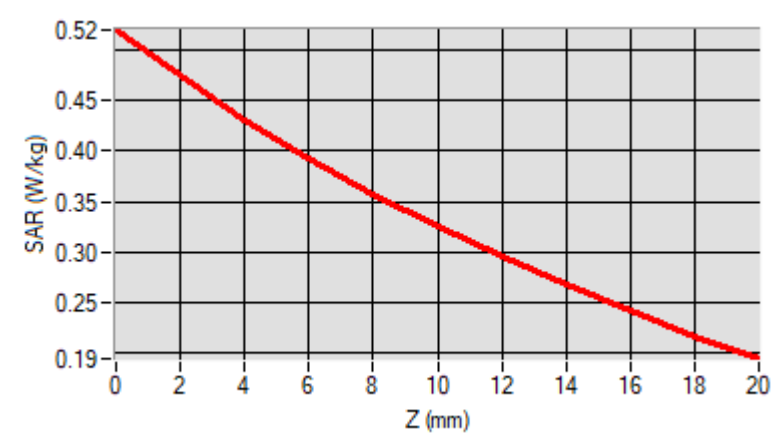
Maximum location: X=-1.00, Y=-35.00

D. SAR 1g & 10g

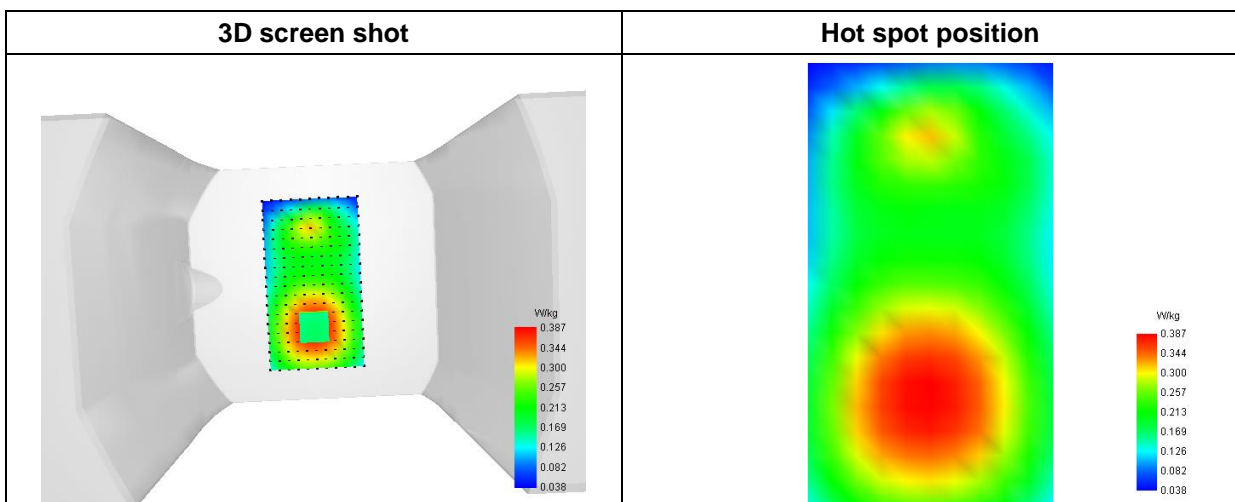
SAR 10g (W/Kg)	0.315414
SAR 1g (W/Kg)	0.417139

E. Z Axis Scan

Z (mm)	0.00	4.00	6.00	8.00	10.00	12.00	14.00	16.00	18.00
SAR (W/Kg)	0.5201	0.4314	0.3926	0.3570	0.3244	0.2944	0.2666	0.2408	0.2166



F. 3D Image



# MEASUREMENT 38/59

Type: Phone measurement (Complete)  
 Date of measurement: 2023-03-08  
 Measurement duration: 12 minutes 3 seconds

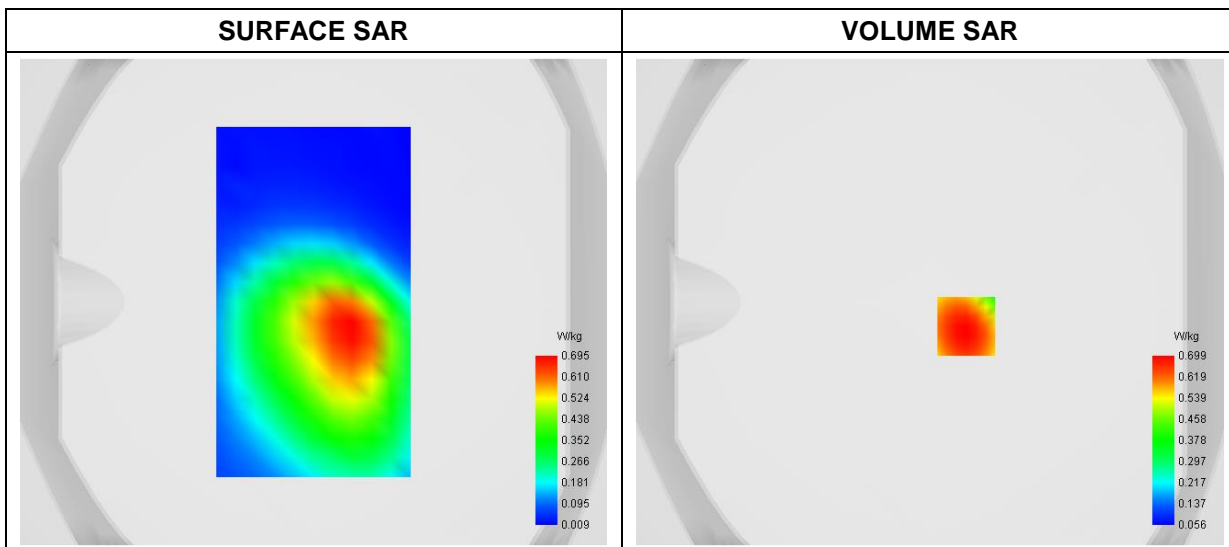
### A. Experimental conditions

<b>Area Scan</b>	dx=8mm dy=8mm
<b>Zoom Scan</b>	dx=4mm dy=4mm dz=2mm
<b>Phantom</b>	Flat Plane
<b>Device Position</b>	Front
<b>Band</b>	LTE Band 66
<b>Channels</b>	QPSK, 20MHz, 1RB, Middle
<b>Signal</b>	Duty Cycle 1:1

### B. SAR Measurement Results

<b>Frequency (MHz)</b>	1745.000000
<b>Relative Permittivity (real part)</b>	39.624875
<b>Conductivity (S/m)</b>	1.382525
<b>Power Variation (%)</b>	1.250000
<b>Ambient Temperature</b>	23.5
<b>Liquid Temperature</b>	23.5

### C. SAR Surface and Volume



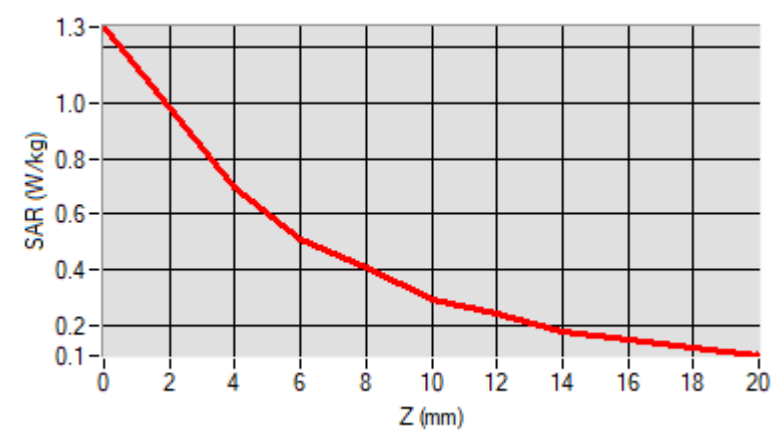
Maximum location: X=15.00, Y=-10.00

D. SAR 1g & 10g

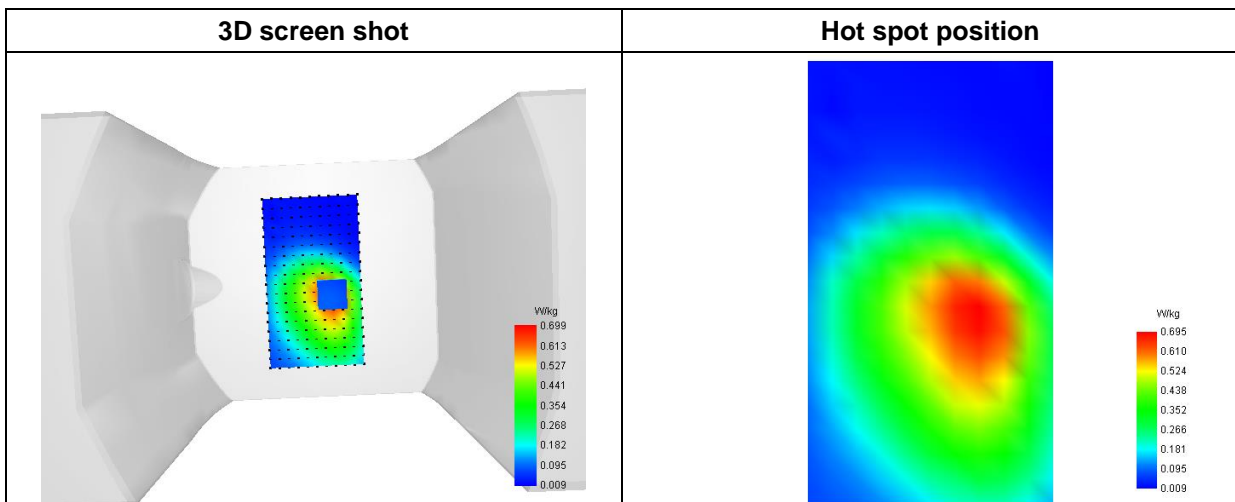
SAR 10g (W/Kg)	0.372558
SAR 1g (W/Kg)	0.675220

E. Z Axis Scan

Z (mm)	0.00	4.00	6.00	8.00	10.00	12.00	14.00	16.00	18.00
SAR (W/Kg)	1.2726	0.6994	0.5095	0.4073	0.2964	0.2443	0.1794	0.1510	0.1184



F. 3D Image



# MEASUREMENT 39/60

Type: Phone measurement (Complete)  
 Date of measurement: 2023-03-06  
 Measurement duration: 12 minutes 3 seconds

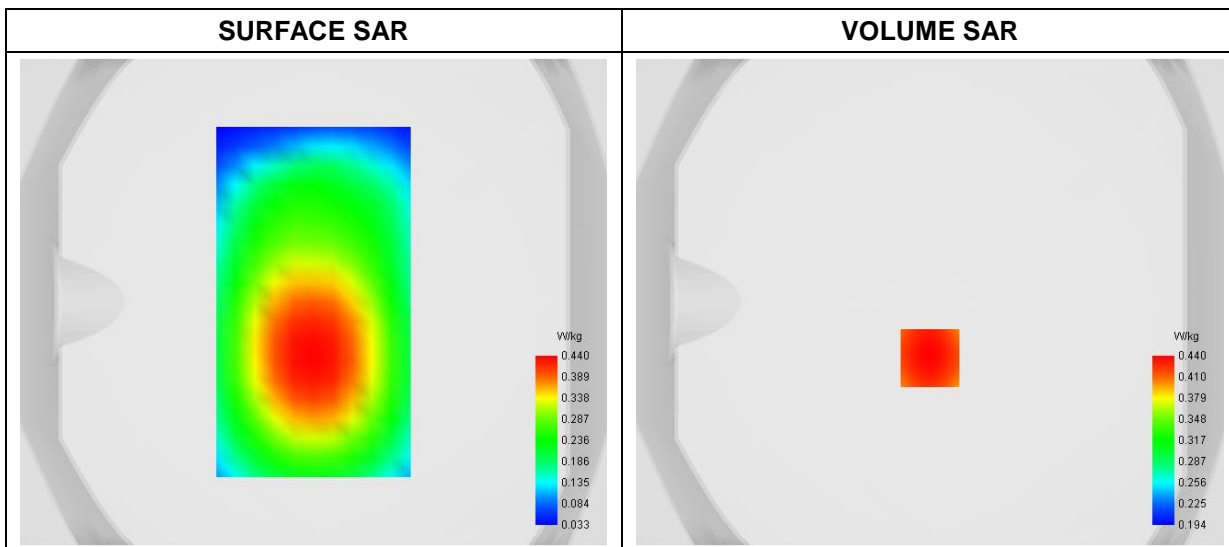
### A. Experimental conditions

<b>Area Scan</b>	dx=8mm dy=8mm
<b>Zoom Scan</b>	dx=4mm dy=4mm dz=2mm
<b>Phantom</b>	Flat Plane
<b>Device Position</b>	Back
<b>Band</b>	LTE Band 71
<b>Channels</b>	QPSK, 20MHz, 1RB, High
<b>Signal</b>	Duty Cycle 1:1

### B. SAR Measurement Results

<b>Frequency (MHz)</b>	688.000000
<b>Relative Permittivity (real part)</b>	42.324957
<b>Conductivity (S/m)</b>	0.873016
<b>Power Variation (%)</b>	1.150000
<b>Ambient Temperature</b>	23.2
<b>Liquid Temperature</b>	23.2

### C. SAR Surface and Volume



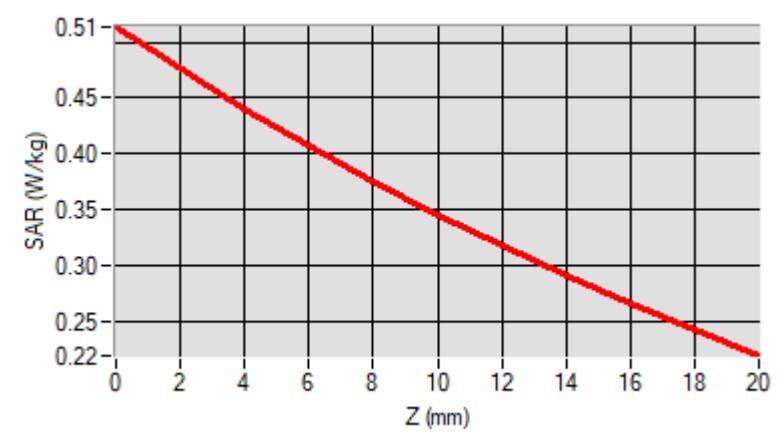
Maximum location: X=0.00, Y=-23.00

D. SAR 1g & 10g

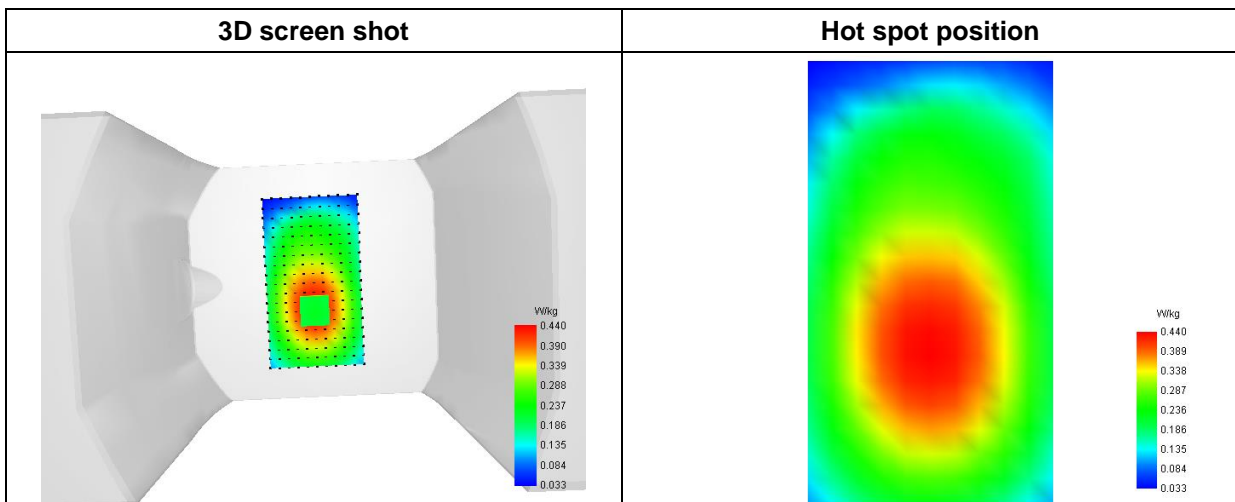
SAR 10g (W/Kg)	0.337672
SAR 1g (W/Kg)	0.435500

E. Z Axis Scan

Z (mm)	0.00	4.00	6.00	8.00	10.00	12.00	14.00	16.00	18.00
SAR (W/Kg)	0.5135	0.4405	0.4071	0.3756	0.3459	0.3178	0.2913	0.2661	0.2423



F. 3D Image



# MEASUREMENT 40/61

Type: Phone measurement (Complete)  
 Date of measurement: 2023-03-09  
 Measurement duration: 12 minutes 3 seconds

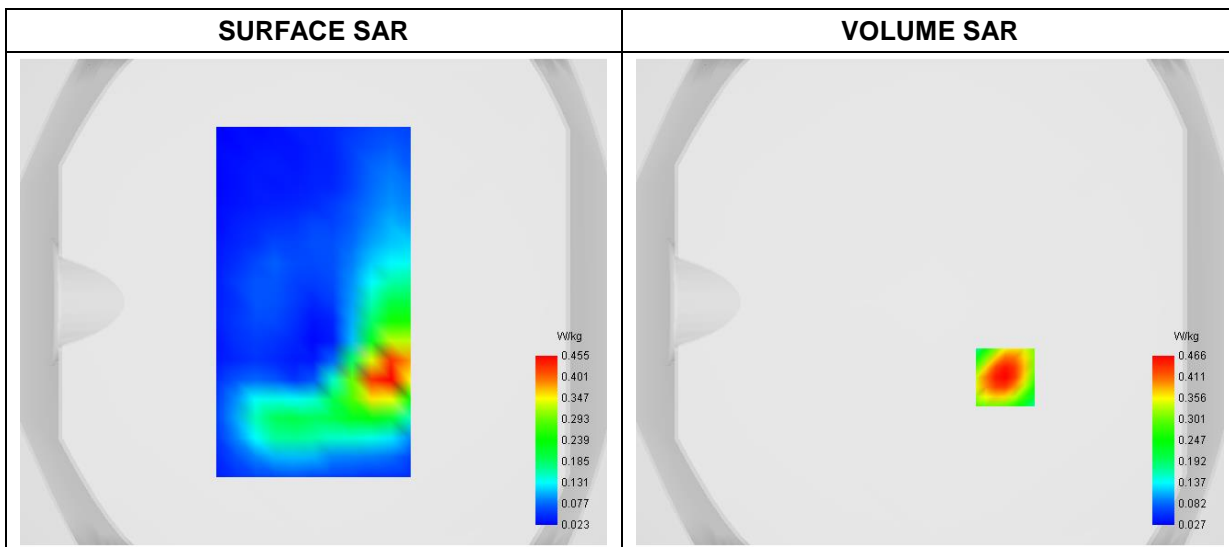
### A. Experimental conditions

<b>Area Scan</b>	dx=8mm dy=8mm
<b>Zoom Scan</b>	dx=4mm dy=4mm dz=2mm
<b>Phantom</b>	Flat Plane
<b>Device Position</b>	Front
<b>Band</b>	LTE Band 41(2535-2655MHz)
<b>Channels</b>	QPSK, 20MHz,1RB,Middle
<b>Signal</b>	Duty Cycle 1:1

### B. SAR Measurement Results

<b>Frequency (MHz)</b>	2545.000000
<b>Relative Permittivity (real part)</b>	38.960525
<b>Conductivity (S/m)</b>	1.943574
<b>Power Variation (%)</b>	1.520000
<b>Ambient Temperature</b>	23.6
<b>Liquid Temperature</b>	23.6

### C. SAR Surface and Volume



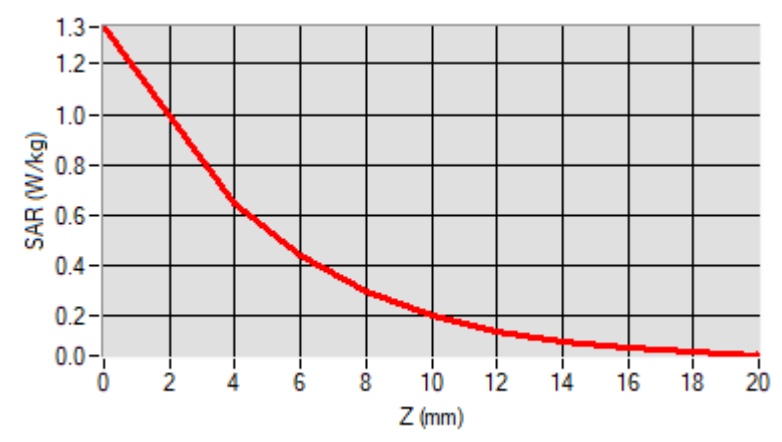
Maximum location: X=31.00, Y=-31.00

D. SAR 1g & 10g

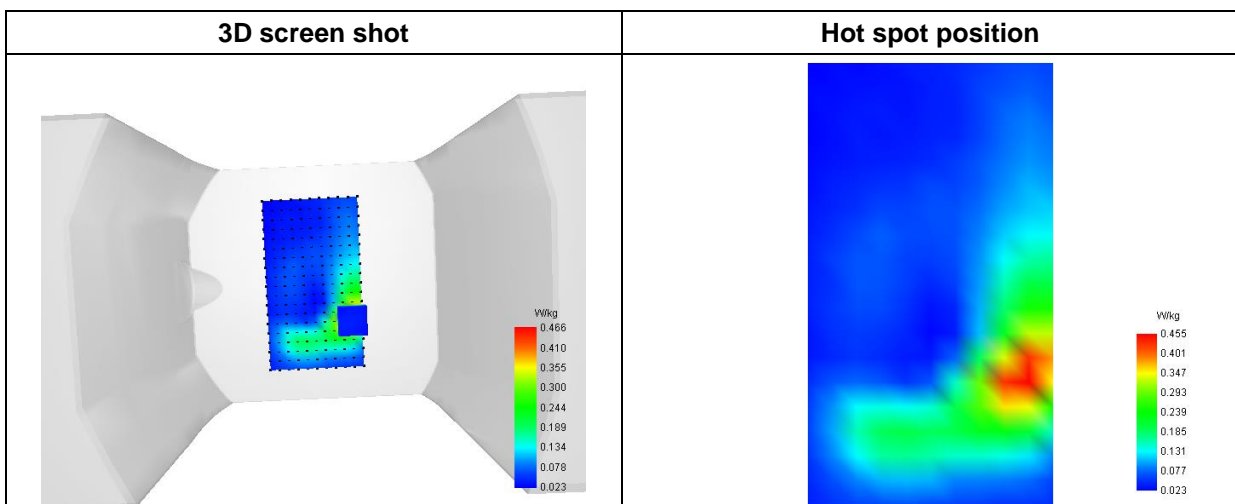
SAR 10g (W/Kg)	0.279781
SAR 1g (W/Kg)	0.608458

E. Z Axis Scan

Z (mm)	0.00	4.00	6.00	8.00	10.00	12.00	14.00	16.00	18.00
SAR (W/Kg)	1.3461	0.6444	0.4371	0.2945	0.2016	0.1411	0.1017	0.0752	0.0566



F. 3D Image



# MEASUREMENT 41/62

Type: Phone measurement (Complete)  
 Date of measurement: 2023-03-09  
 Measurement duration: 12 minutes 3 seconds

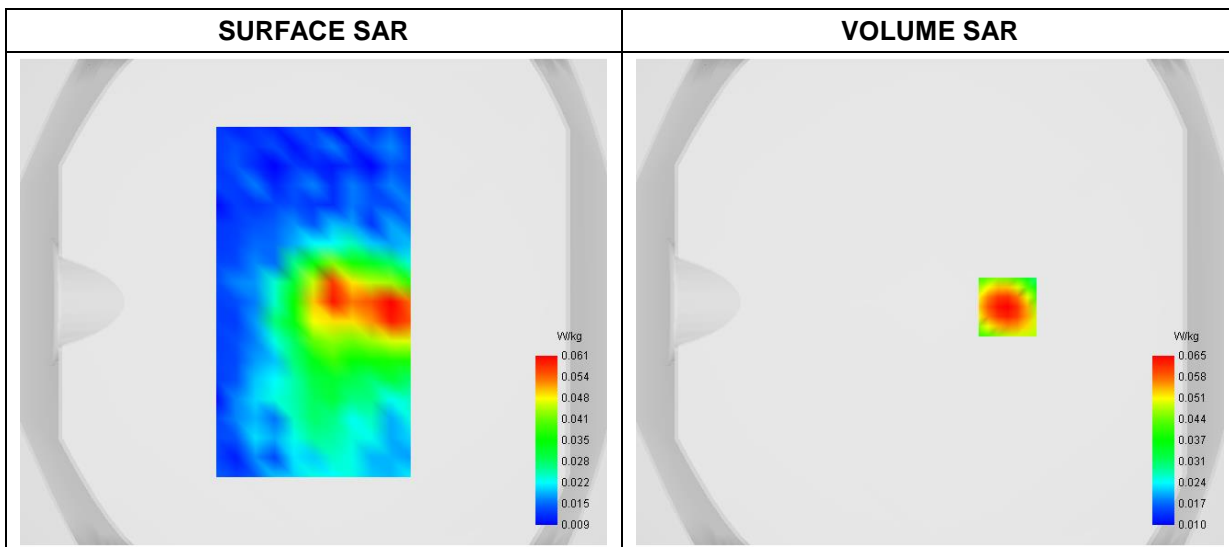
### A. Experimental conditions

<b>Area Scan</b>	dx=8mm dy=8mm
<b>Zoom Scan</b>	dx=4mm dy=4mm dz=2mm
<b>Phantom</b>	Flat Plane
<b>Device Position</b>	Back
<b>Band</b>	WiFi(2.4GHz)_802.11b
<b>Channels</b>	High
<b>Signal</b>	Duty Cycle: 1:1

### B. SAR Measurement Results

<b>Frequency (MHz)</b>	2462.000000
<b>Relative Permittivity (real part)</b>	39.091835
<b>Conductivity (S/m)</b>	1.764129
<b>Power Variation (%)</b>	2.210000
<b>Ambient Temperature</b>	23.6
<b>Liquid Temperature</b>	23.6

### C. SAR Surface and Volume





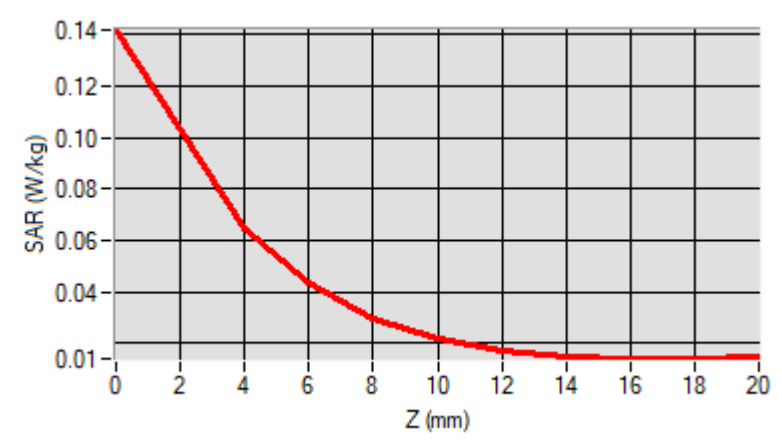
Maximum location: X=32.00, Y=-2.00

D. SAR 1g & 10g

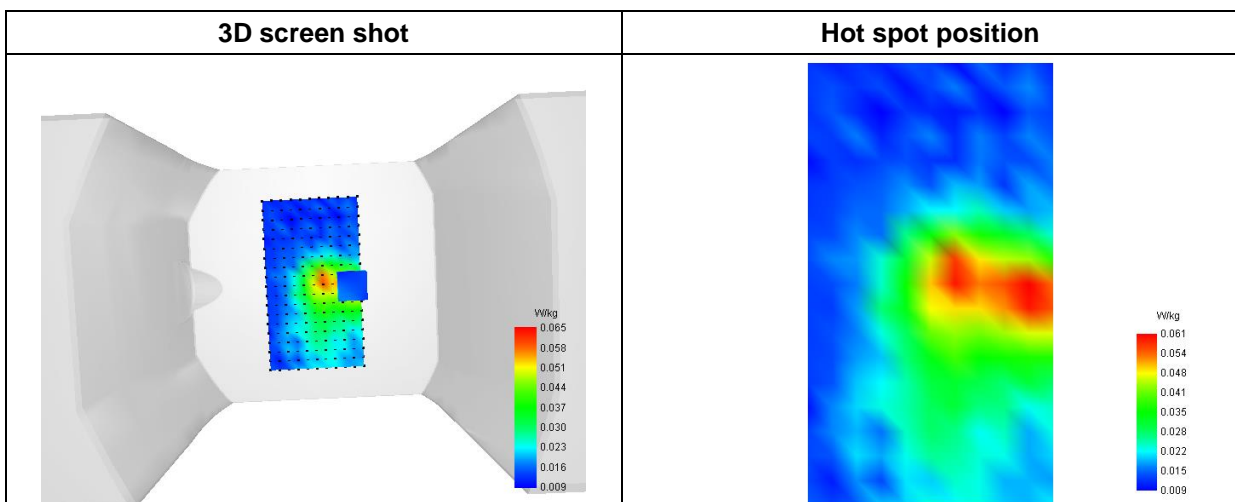
SAR 10g (W/Kg)	0.034484
SAR 1g (W/Kg)	0.063660

E. Z Axis Scan

Z (mm)	0.00	4.00	6.00	8.00	10.00	12.00	14.00	16.00	18.00
SAR (W/Kg)	0.1418	0.0648	0.0434	0.0297	0.0216	0.0171	0.0148	0.0140	0.0139



F. 3D Image



# MEASUREMENT 42/63

Type: Phone measurement (Complete)  
 Date of measurement: 2023-03-07  
 Measurement duration: 12 minutes 3 seconds

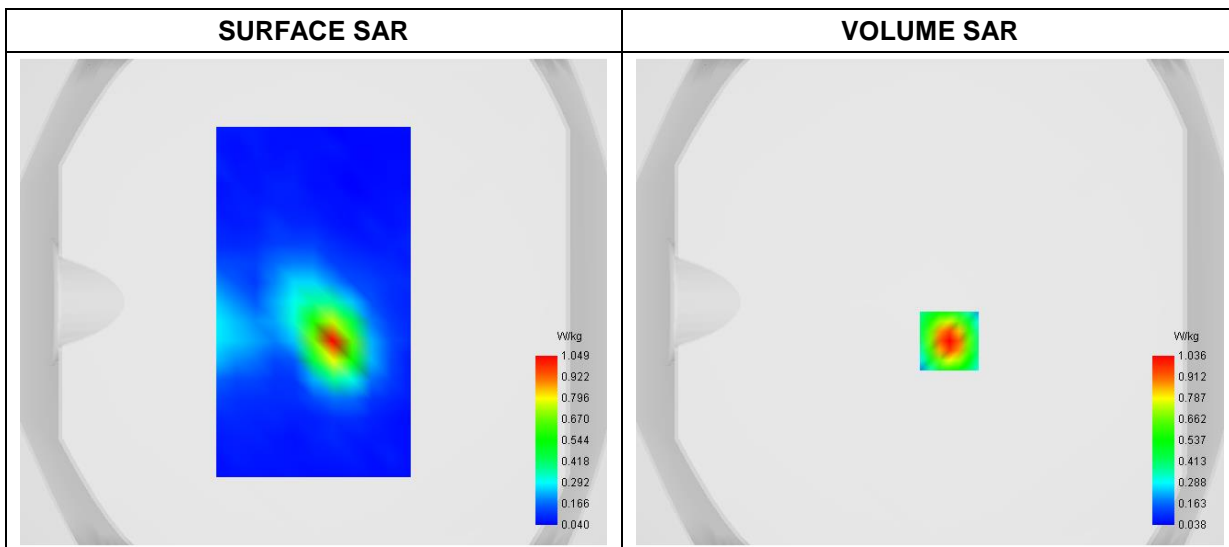
### A. Experimental conditions

<b>Area Scan</b>	dx=8mm dy=8mm
<b>Zoom Scan</b>	dx=4mm dy=4mm dz=2mm
<b>Phantom</b>	Flat Plane
<b>Device Position</b>	Back
<b>Band</b>	WiFi(5.2GHz)_802.11a
<b>Channels</b>	Low
<b>Signal</b>	Duty Cycle: 1:1

### B. SAR Measurement Results

<b>Frequency (MHz)</b>	5180.000000
<b>Relative Permittivity (real part)</b>	36.642911
<b>Conductivity (S/m)</b>	4.711483
<b>Power Variation (%)</b>	0.340000
<b>Ambient Temperature</b>	23.8
<b>Liquid Temperature</b>	23.8

### C. SAR Surface and Volume



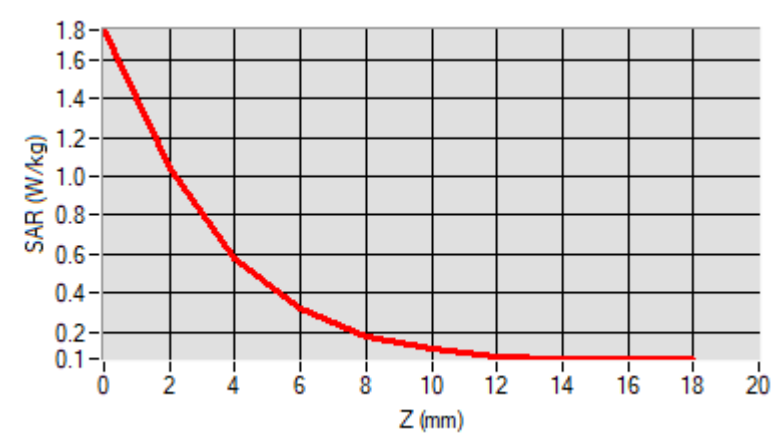
Maximum location: X=8.00, Y=-16.00

D. SAR 1g & 10g

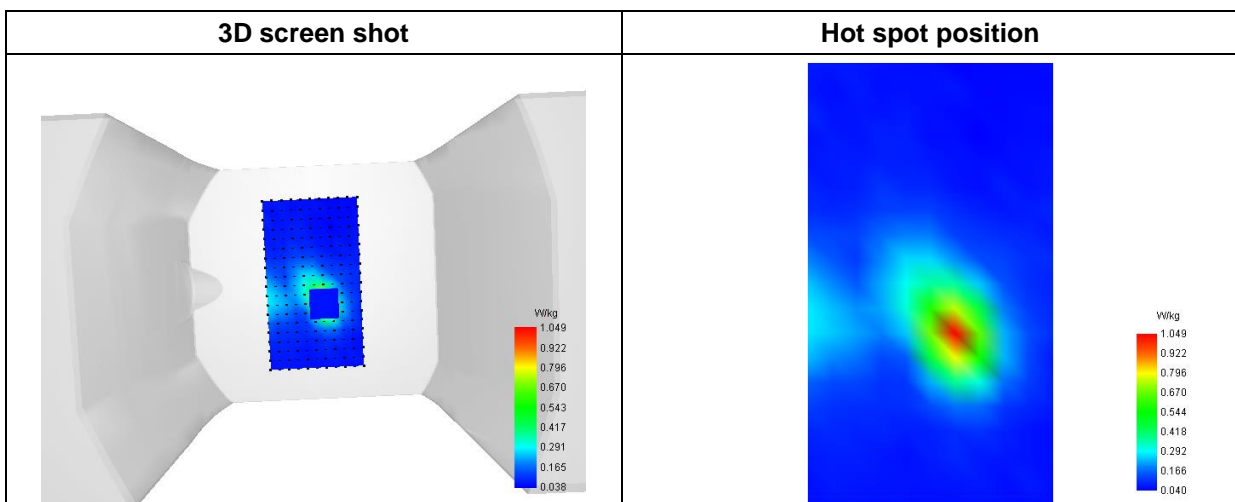
SAR 10g (W/Kg)	0.217508
SAR 1g (W/Kg)	0.581790

E. Z Axis Scan

Z (mm)	0.00	2.00	4.00	6.00	8.00	10.00	12.00	14.00	16.00
SAR (W/Kg)	1.7528	1.0362	0.5814	0.3164	0.1774	0.1082	0.0760	0.0634	0.0612



F. 3D Image



# MEASUREMENT 43

Type: Phone measurement (Complete)  
 Date of measurement: 2023-03-07  
 Measurement duration: 12 minutes 3 seconds

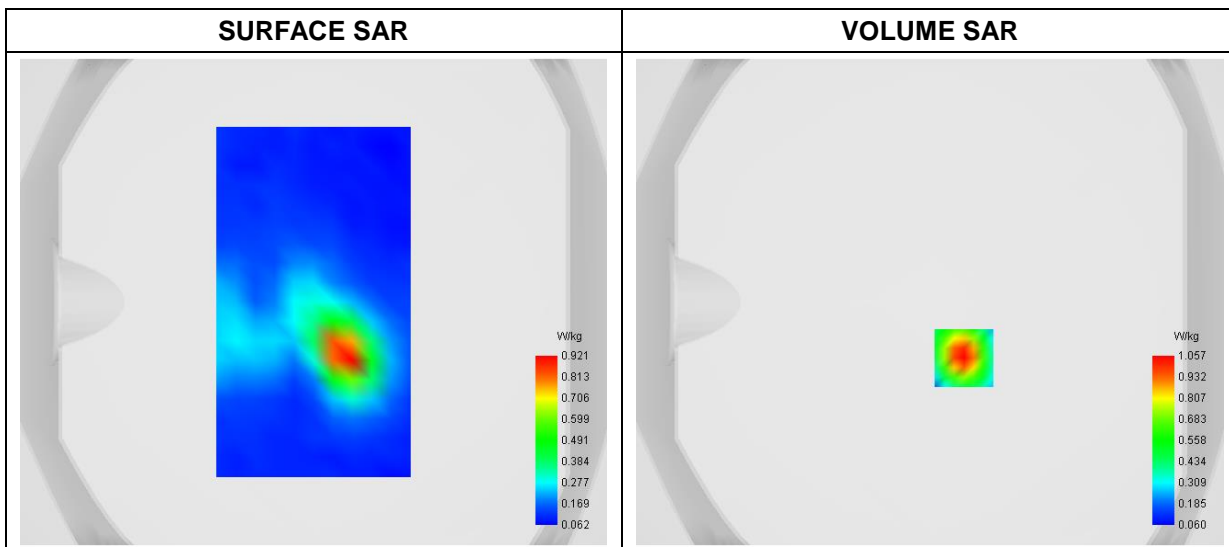
### A. Experimental conditions

<b>Area Scan</b>	dx=8mm dy=8mm
<b>Zoom Scan</b>	dx=4mm dy=4mm dz=2mm
<b>Phantom</b>	Flat Plane
<b>Device Position</b>	Back
<b>Band</b>	WiFi(5.3GHz)_802.11a
<b>Channels</b>	High
<b>Signal</b>	Duty Cycle: 1:1

### B. SAR Measurement Results

<b>Frequency (MHz)</b>	5320.000000
<b>Relative Permittivity (real part)</b>	36.614129
<b>Conductivity (S/m)</b>	4.832694
<b>Power Variation (%)</b>	0.550000
<b>Ambient Temperature</b>	23.8
<b>Liquid Temperature</b>	23.8

### C. SAR Surface and Volume



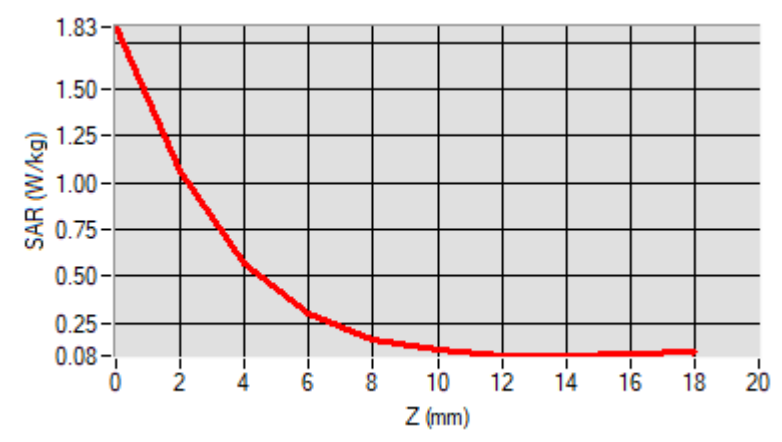
Maximum location: X=14.00, Y=-23.00

D. SAR 1g & 10g

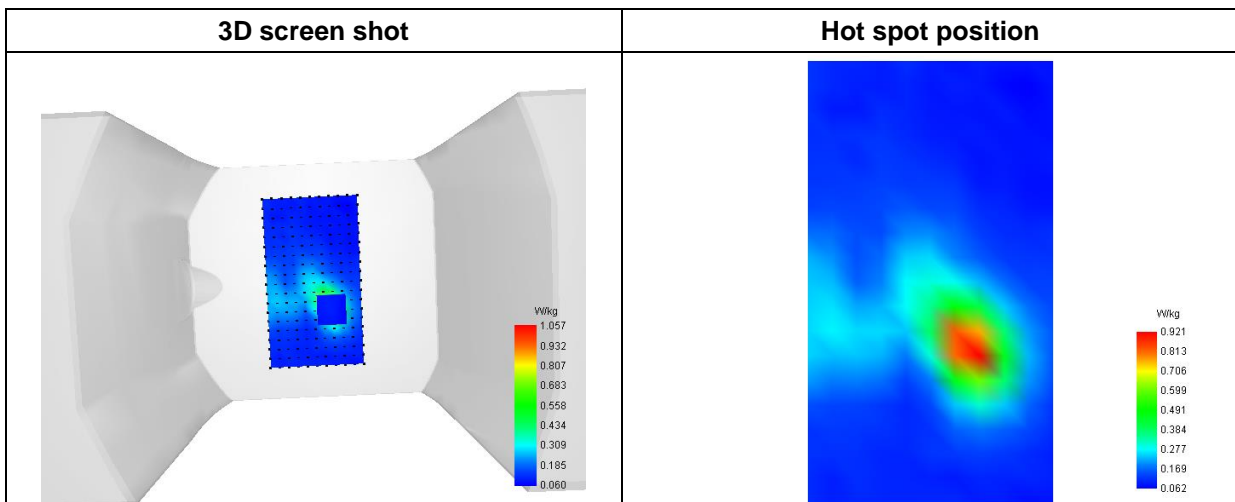
SAR 10g (W/Kg)	0.235543
SAR 1g (W/Kg)	0.594516

E. Z Axis Scan

Z (mm)	0.00	2.00	4.00	6.00	8.00	10.00	12.00	14.00	16.00	18.00
SAR (W/Kg)	1.8332	1.0566	0.5724	0.3008	0.1659	0.1036	0.0791	0.0750	0.0835	



F. 3D Image



# MEASUREMENT 44/64

Type: Phone measurement (Complete)  
 Date of measurement: 2023-03-07  
 Measurement duration: 12 minutes 3 seconds

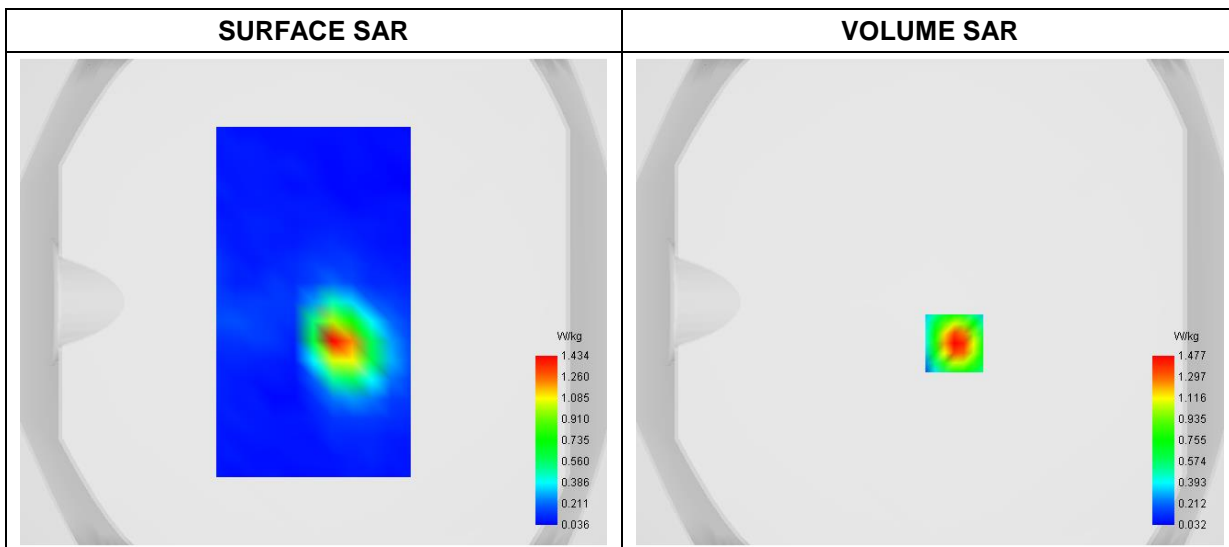
### A. Experimental conditions

<b>Area Scan</b>	dx=8mm dy=8mm
<b>Zoom Scan</b>	dx=4mm dy=4mm dz=2mm
<b>Phantom</b>	Flat Plane
<b>Device Position</b>	Back
<b>Band</b>	WiFi(5.8GHz)_802.11a
<b>Channels</b>	High
<b>Signal</b>	Duty Cycle: 1:1

### B. SAR Measurement Results

<b>Frequency (MHz)</b>	5825.000000
<b>Relative Permittivity (real part)</b>	35.922918
<b>Conductivity (S/m)</b>	5.191523
<b>Power Variation (%)</b>	1.540000
<b>Ambient Temperature</b>	23.8
<b>Liquid Temperature</b>	23.8

### C. SAR Surface and Volume



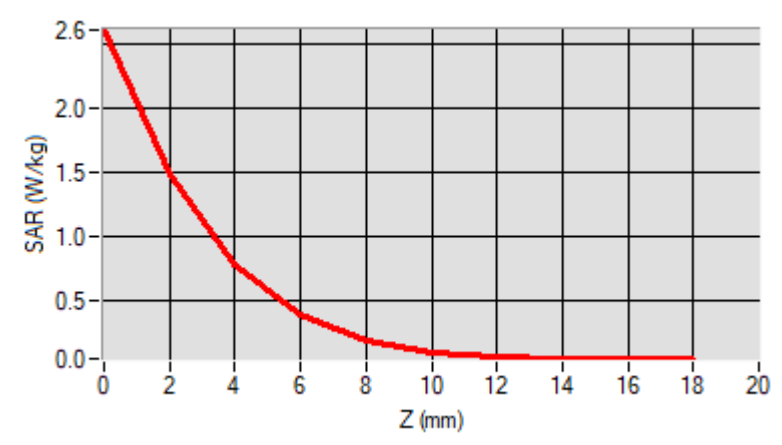
Maximum location: X=10.00, Y=-17.00

D. SAR 1g & 10g

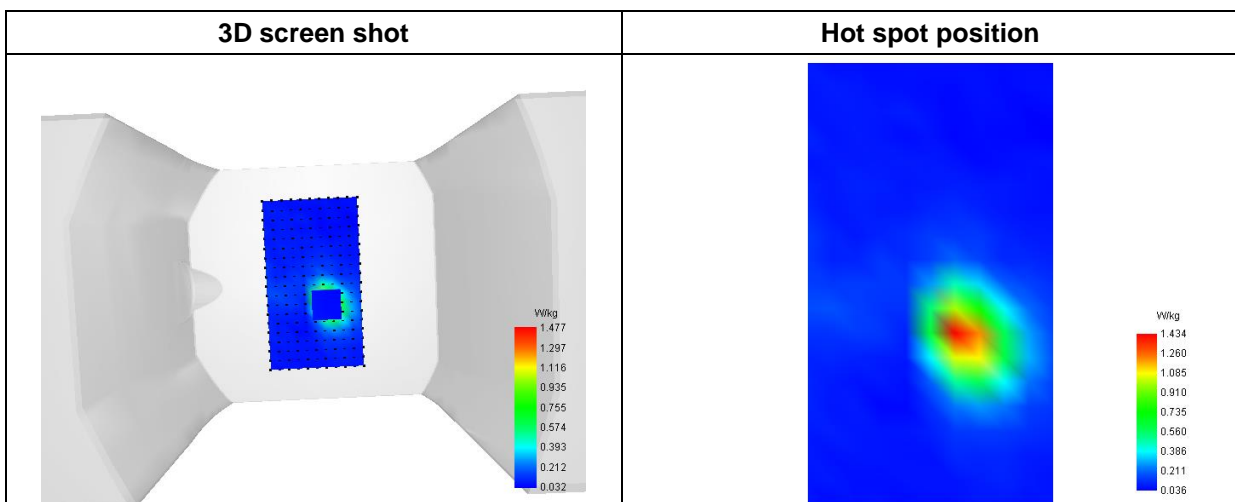
SAR 10g (W/Kg)	0.217309
SAR 1g (W/Kg)	0.611358

E. Z Axis Scan

Z (mm)	0.00	2.00	4.00	6.00	8.00	10.00	12.00	14.00	16.00
SAR (W/Kg)	2.5650	1.4473	0.7369	0.3546	0.1801	0.0968	0.0602	0.0452	0.0433



F. 3D Image



# MEASUREMENT 45

Type: Phone measurement (Complete)

Date of measurement: 2023-03-08

Measurement duration: 11 minutes 48 seconds

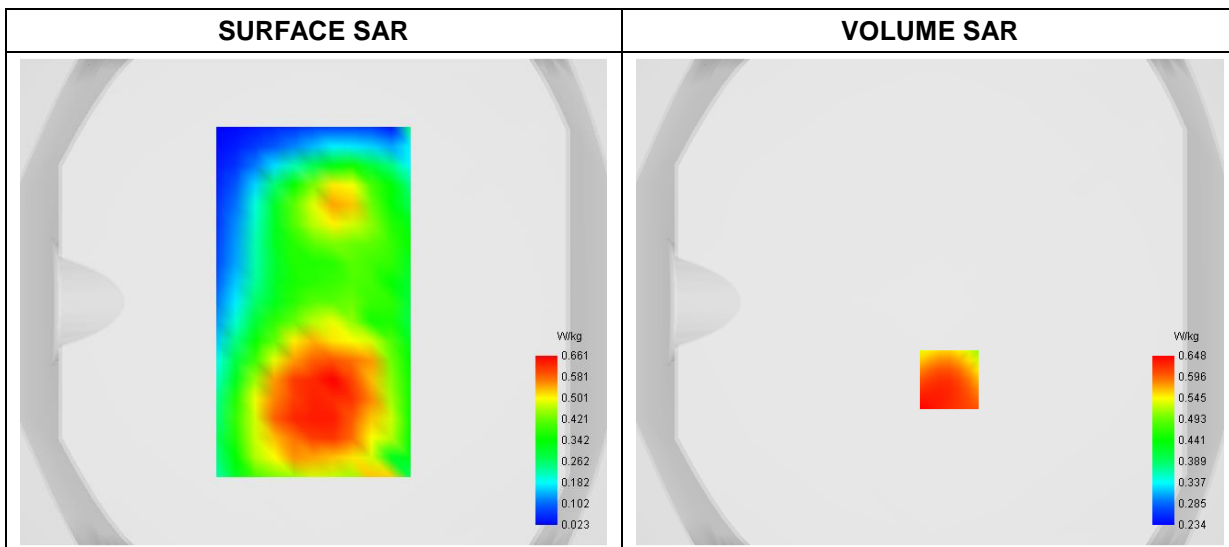
### A. Experimental conditions

<b>Area Scan</b>	dx=8mm dy=8mm
<b>Zoom Scan</b>	dx=4mm dy=4mm dz=2mm
<b>Phantom</b>	Flat Plane
<b>Device Position</b>	Back
<b>Band</b>	GPRS850_3TX
<b>Channels</b>	Low
<b>Signal</b>	Duty Cycle: 1:2.66

### B. SAR Measurement Results

<b>Frequency (MHz)</b>	824.2000000
<b>Relative Permittivity (real part)</b>	42.064612
<b>Conductivity (S/m)</b>	0.881321
<b>Power Variation (%)</b>	3.140000
<b>Ambient Temperature</b>	23.2
<b>Liquid Temperature</b>	23.2

### C. SAR Surface and Volume





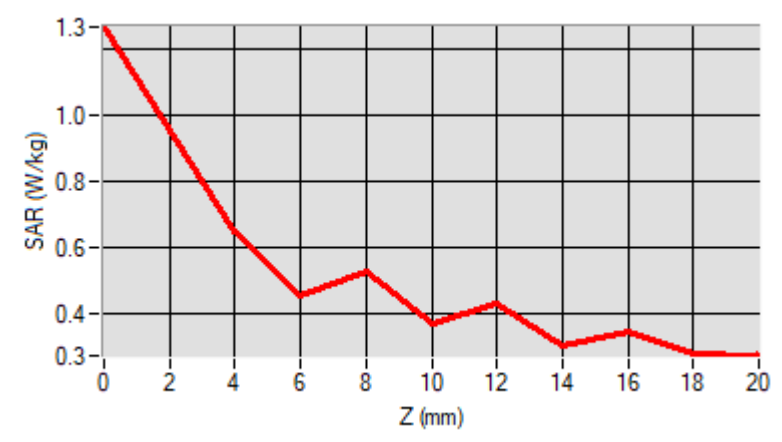
Maximum location: X=8.00, Y=-32.00

D. SAR 1g & 10g

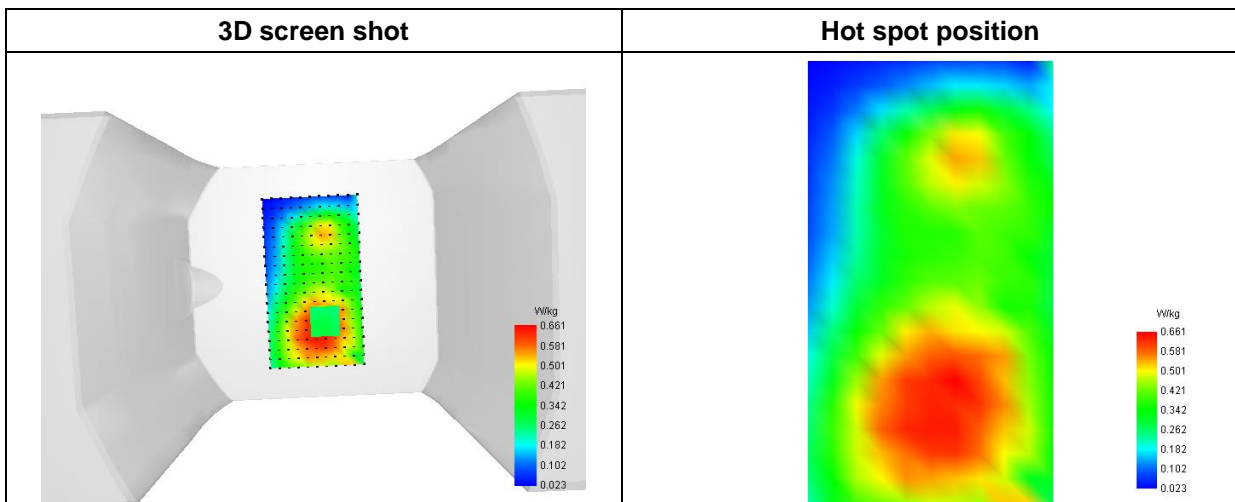
SAR 10g (W/Kg)	0.471291
SAR 1g (W/Kg)	0.632223

E. Z Axis Scan

Z (mm)	0.00	4.00	6.00	8.00	10.00	12.00	14.00	16.00	18.00
SAR (W/Kg)	1.2639	0.6482	0.4557	0.5283	0.3678	0.4292	0.3053	0.3460	0.2776



F. 3D Image



# MEASUREMENT 46

Type: Phone measurement (Complete)  
 Date of measurement: 2023-03-08  
 Measurement duration: 11 minutes 48 seconds

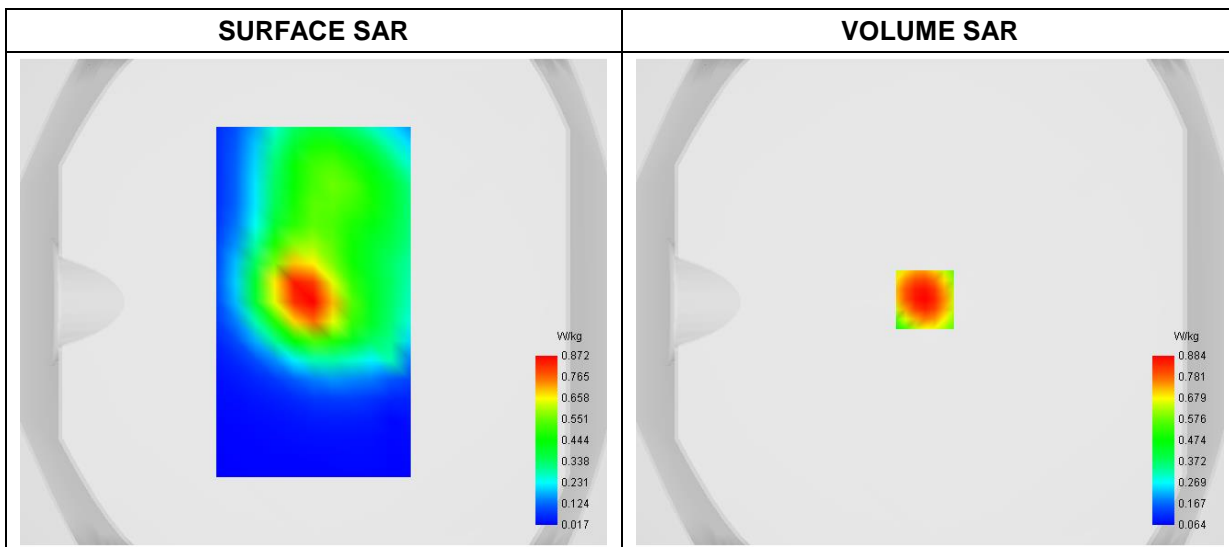
### A. Experimental conditions

<b>Area Scan</b>	dx=8mm dy=8mm
<b>Zoom Scan</b>	dx=4mm dy=4mm dz=2mm
<b>Phantom</b>	Flat Plane
<b>Device Position</b>	Back
<b>Band</b>	GPRS1900_4TX
<b>Channels</b>	Low
<b>Signal</b>	Duty Cycle: 1:2

### B. SAR Measurement Results

<b>Frequency (MHz)</b>	1850.200000
<b>Relative Permittivity (real part)</b>	39.611894
<b>Conductivity (S/m)</b>	1.381624
<b>Power Variation (%)</b>	1.010000
<b>Ambient Temperature</b>	23.5
<b>Liquid Temperature</b>	23.5

### C. SAR Surface and Volume



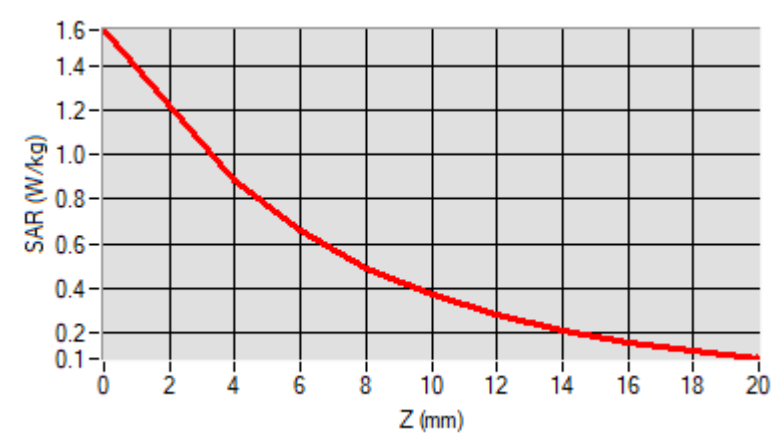
Maximum location: X=-2.00, Y=1.00

D. SAR 1g & 10g

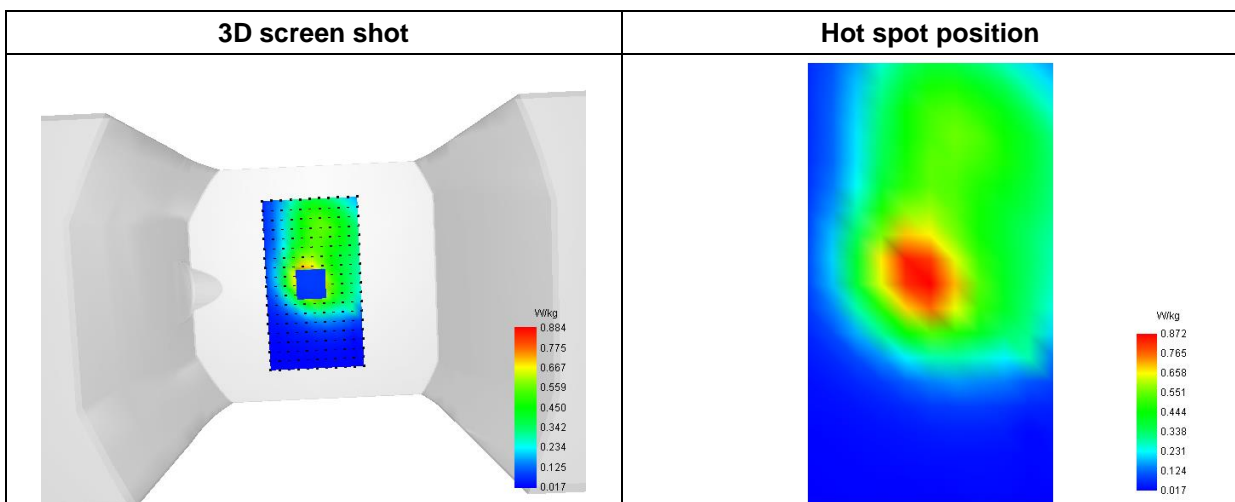
SAR 10g (W/Kg)	0.386261
SAR 1g (W/Kg)	0.608243

E. Z Axis Scan

Z (mm)	0.00	4.00	6.00	8.00	10.00	12.00	14.00	16.00	18.00
SAR (W/Kg)	1.5386	0.8638	0.6414	0.4732	0.3498	0.2587	0.2007	0.1388	0.1080



F. 3D Image



## Annex C. EUT Photos

---

### EUT View 1



### EUT View 2



### Antenna View



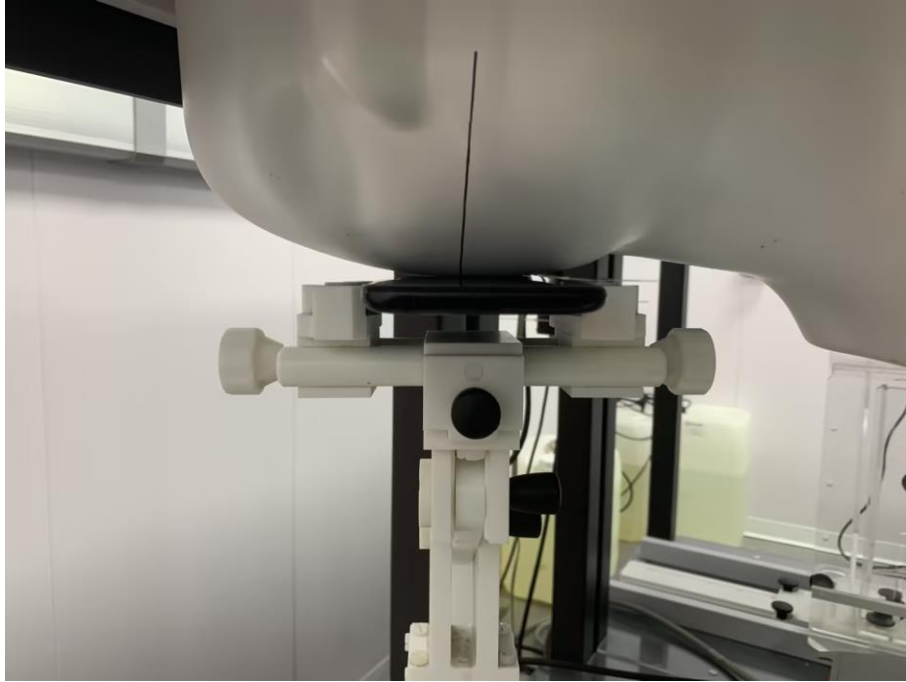


## Annex D. Test Setup Photos

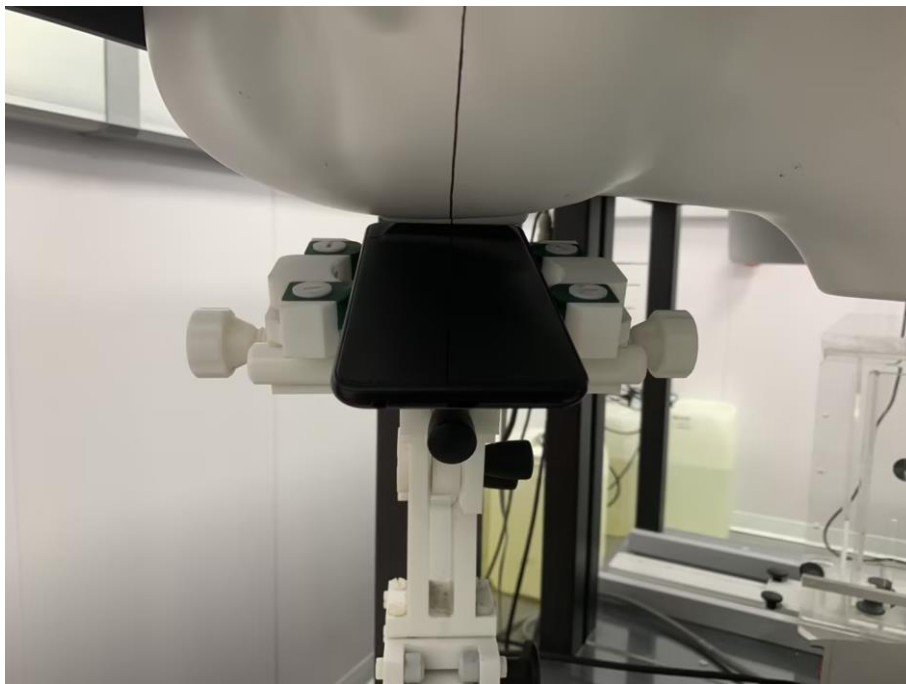
---

### Head Exposure Conditions

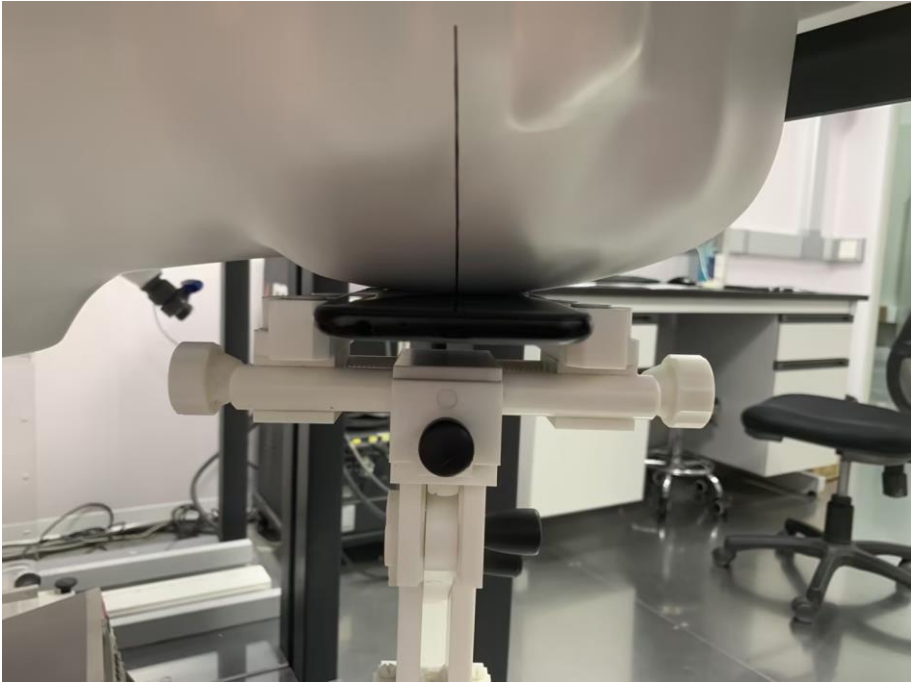
**Right Cheek**



**Tilt**



**Left Cheek**

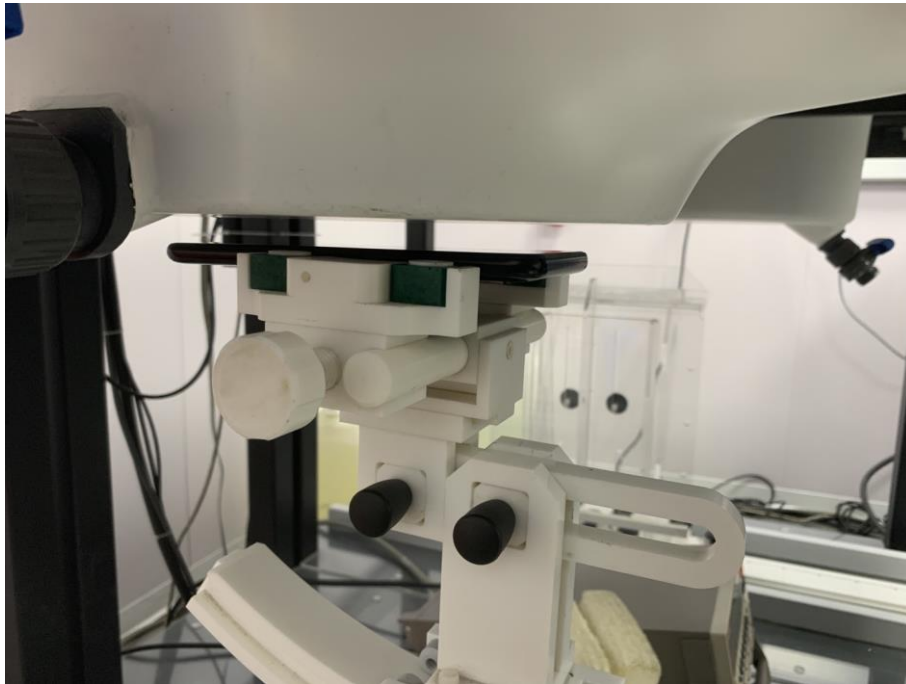


**Tilt**

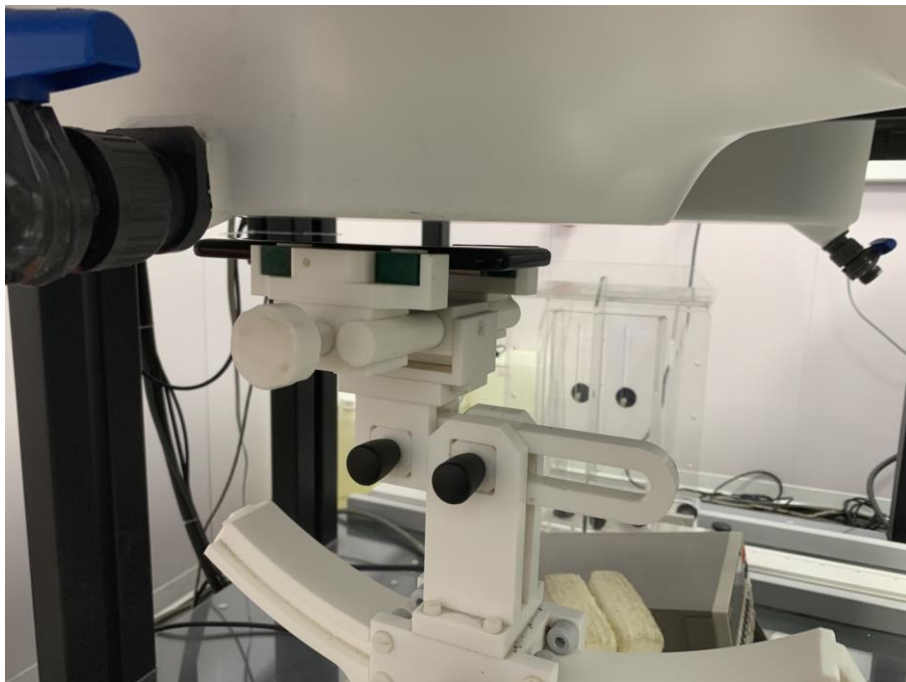


**Body mode Exposure Conditions**  
**Test distance: 10mm**

**Body Front**



**Body Back**





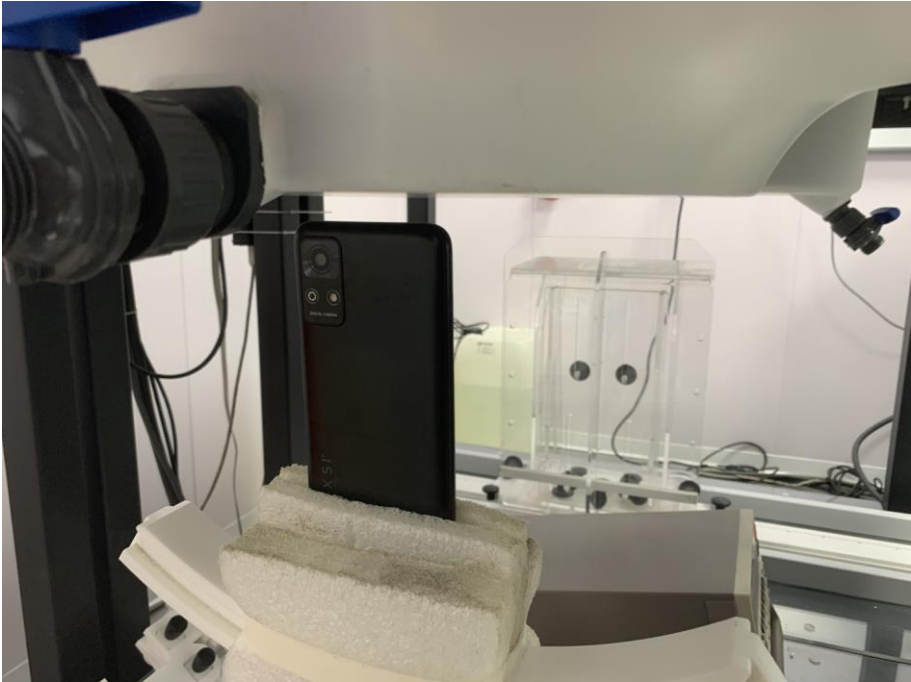
**Body Right**



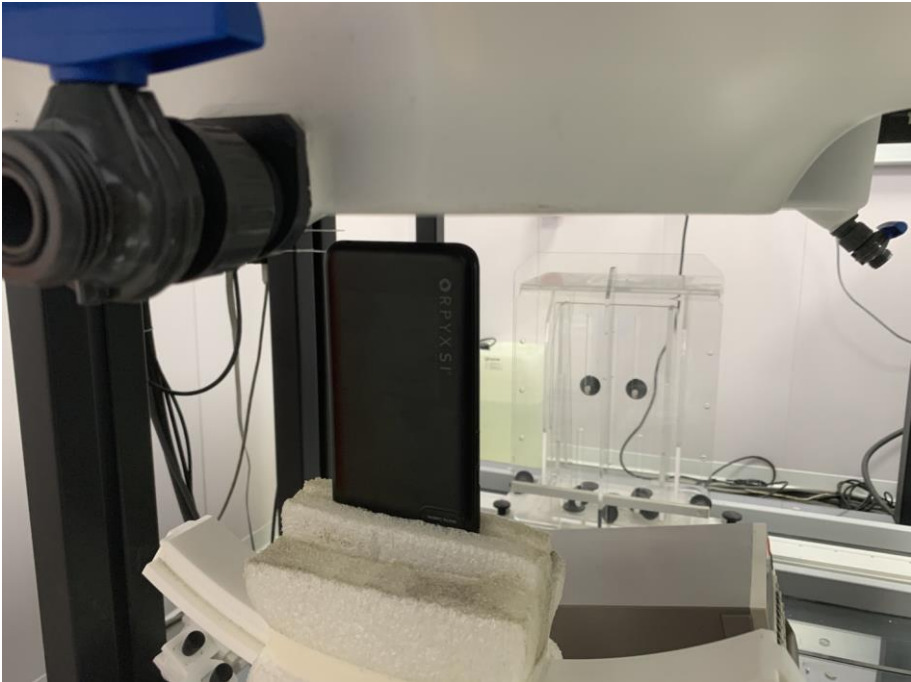
**Body Left**



**Body Top**



**Body Bottom**



## **Annex E. Calibration Certificate**

---

*Please refer to the exhibit for the calibration certificate*

**\*\*\*\*\* END OF REPORT \*\*\*\*\***