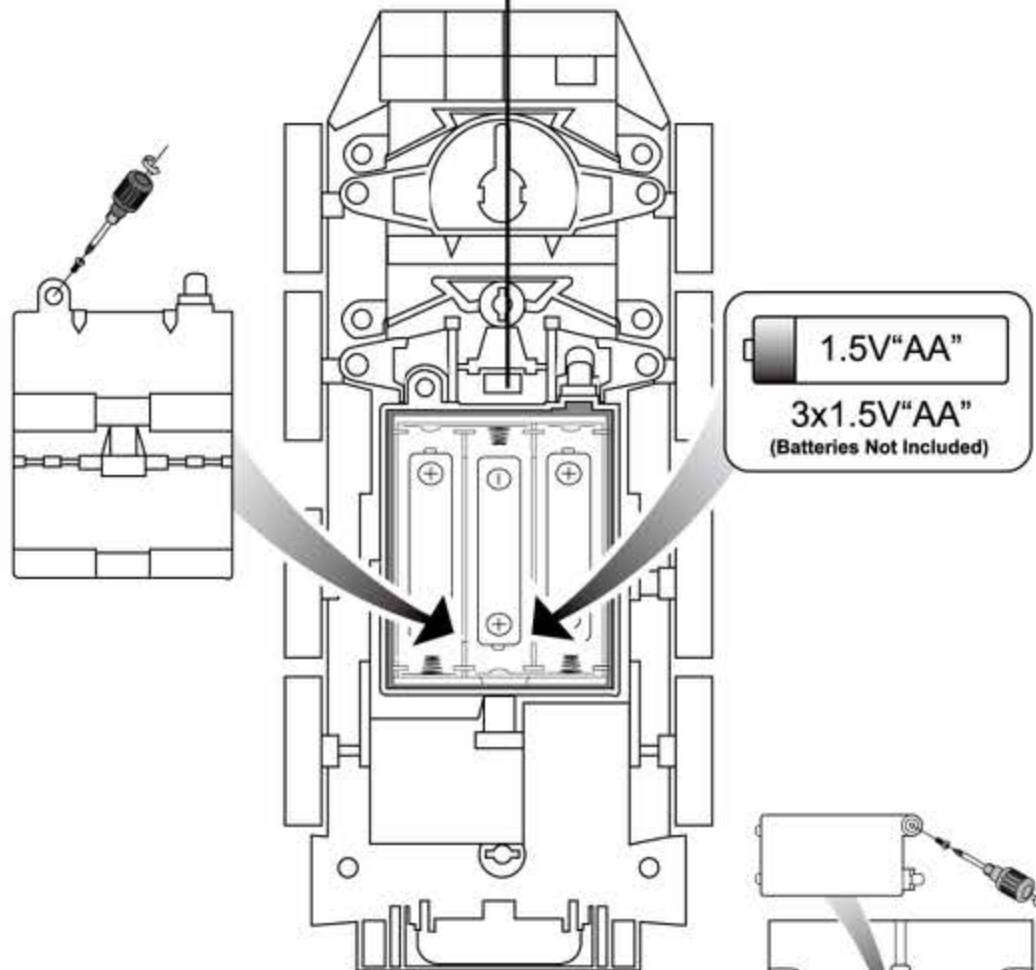
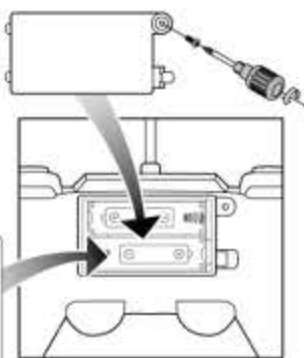


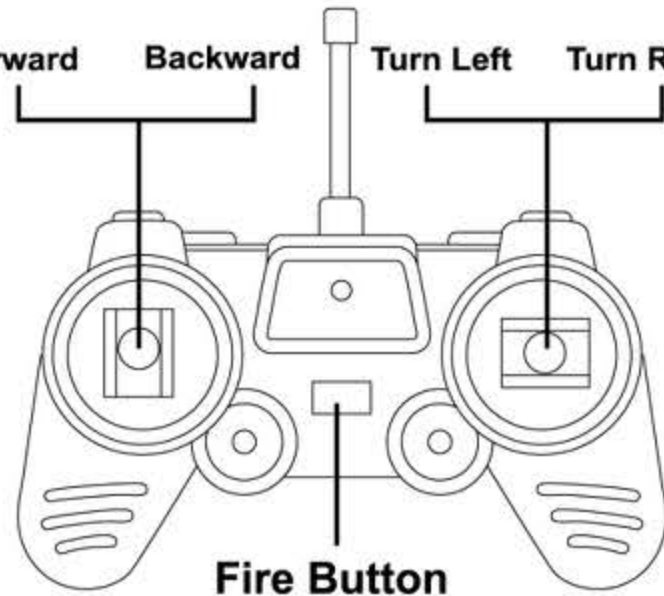
ON/OFF



1.5V AA
1.5V AA
2 x 1.5V AA
(Battery Not Included)



Forward Backward Turn Left Turn Right



Fire Button



WARNING:

Requires 3x1.5V batteries(car), 2x1.5V batteries (Remote controller), batteries not included.

To replace battery, remove bottom cover and insert new battery, noting correct polarity. Please retain information for future use. Do not mix new and old batteries. Use only batteries of the same or equivalent type as recommended by the manufacturer.



- 1) Caution: Modification not approved by the party responsible for compliance could void user's authority to operate the equipment.
- 2) NOTE: This equipment has been tested and found to comply with the limits for Class B digital device, pursuant to part 15 of the FCC Rules. These limits are designed to provide reasonable protection against harmful interference in a residential installation. This equipment generates, uses and can radiate radio frequency energy and if not installed and used in accordance with the instructions, may cause harmful interference to radio or television reception, which can be determined by turning the equipment off and on, the user is encouraged to try to correct the interference by one or more the following measures:

- Reorient or relocate the receiving antenna.
- Increase the separation between the equipment and the receiver.
- Connect the equipment into an outlet on a circuit different from that to which the receiver is connected.
- Consult the dealer or an experienced radio/TV technician for help.

DISTRIBUTED BY:
FRED'S, INC.
4300 NEW GETWELL RD.
MEMPHIS, TN 38118
www.fredsinc.com
MADE IN CHINA

SKU 130436
2932-2015-07

