



ANNEX A. PHOTOGRAPH OF THE TEST

0mm body Horizontal-Down Side Setup Photo – Test Position 1



0mm body Horizontal-Up Side Setup Photo – Test Position 2



Shenzhen LCS Compliance Testing Laboratory Ltd.

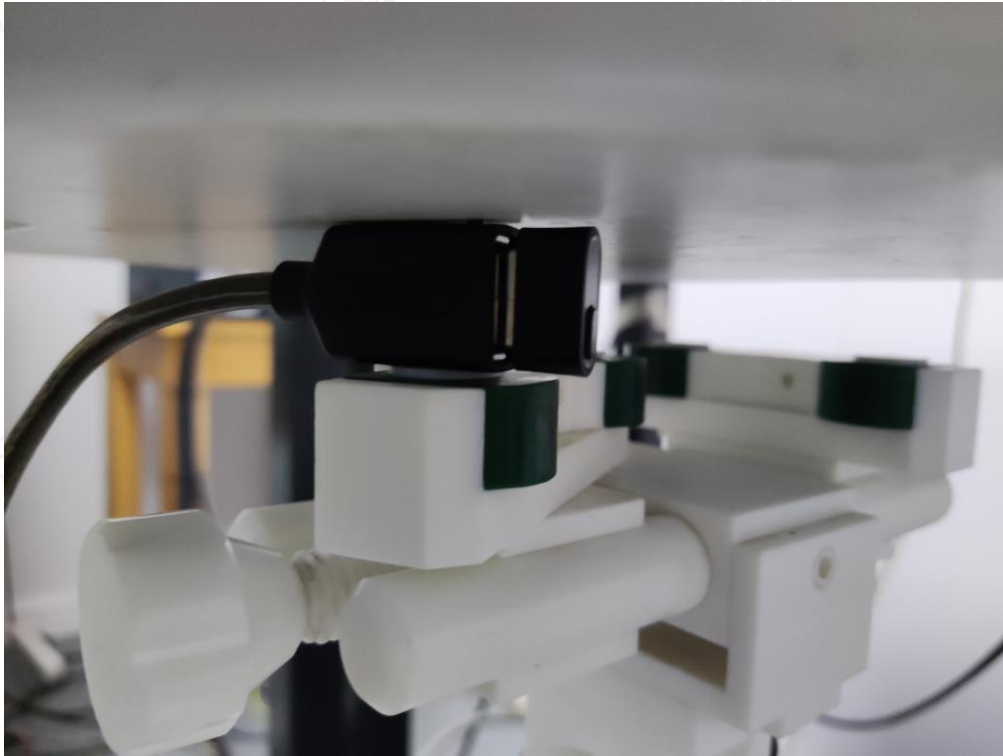
Add: 101, 201 Bldg A & 301 Bldg C, Juji Industrial Park Yabianxueziwei, Shajing Street, Baoan District, Shenzhen, 518000, China

Tel: +(86) 0755-82591330 | E-mail: webmaster@lcs-cert.com | Web: www.lcs-cert.com

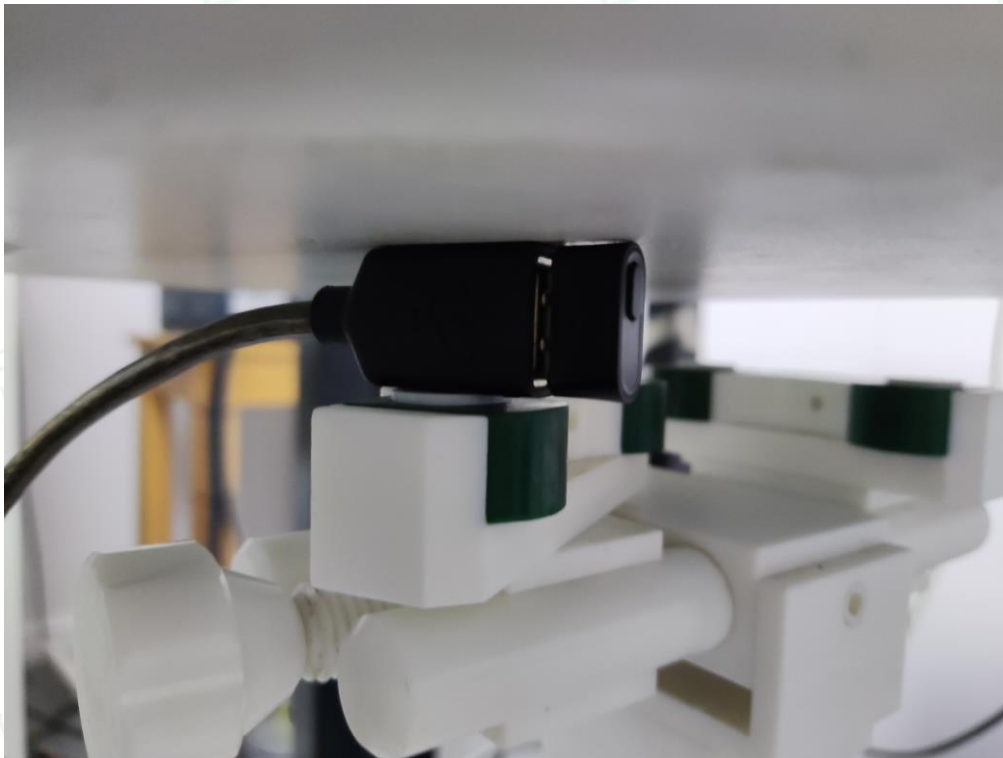
Scan code to check authenticity



0mm body Vertical-Front Side Setup Photo – Test Position 3



0mm body Vertical- Back Side Setup Photo – Test Position 4





ANNEX C. EUT PHOTOGRAPHS

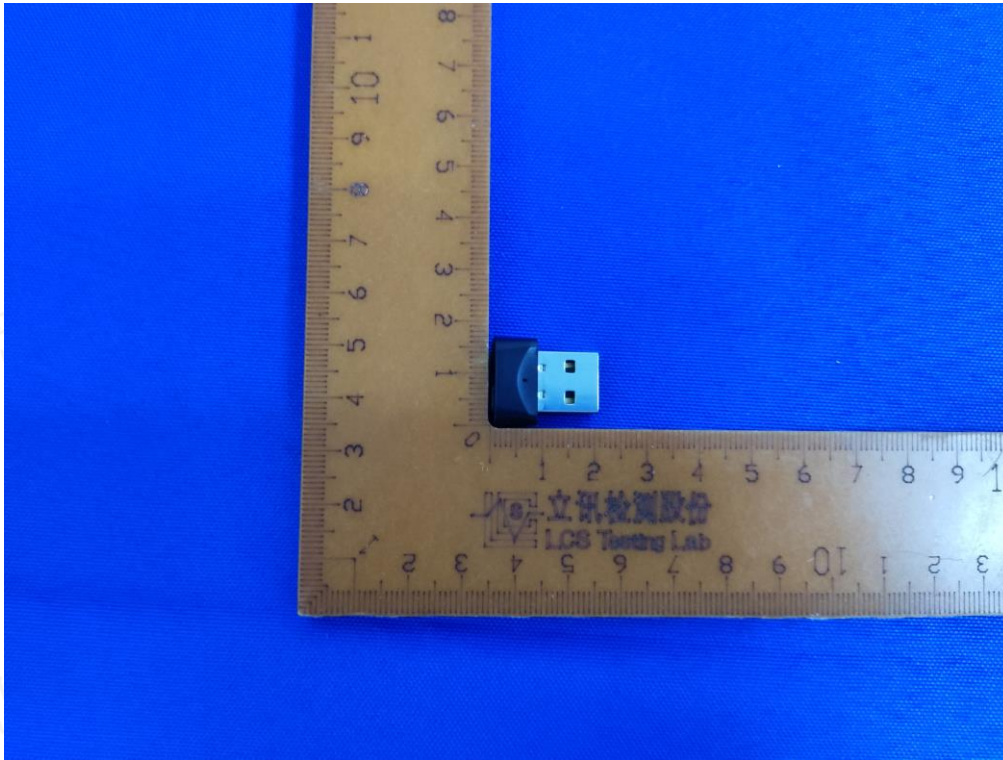


Fig.1

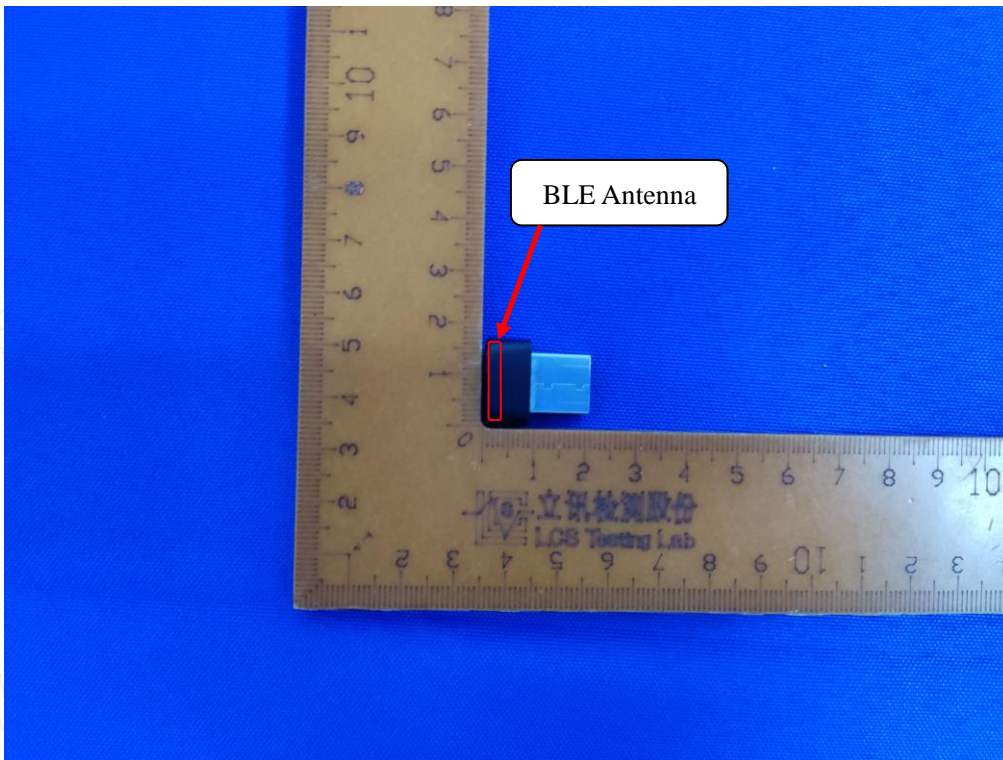


Fig.2



Shenzhen LCS Compliance Testing Laboratory Ltd.

Add: 101, 201 Bldg A & 301 Bldg C, Juji Industrial Park Yabianxueziwei, Shajing Street, Baoan District, Shenzhen, 518000, China

Tel: +(86) 0755-82591330 | E-mail: webmaster@lcs-cert.com | Web: www.lcs-cert.com

Scan code to check authenticity