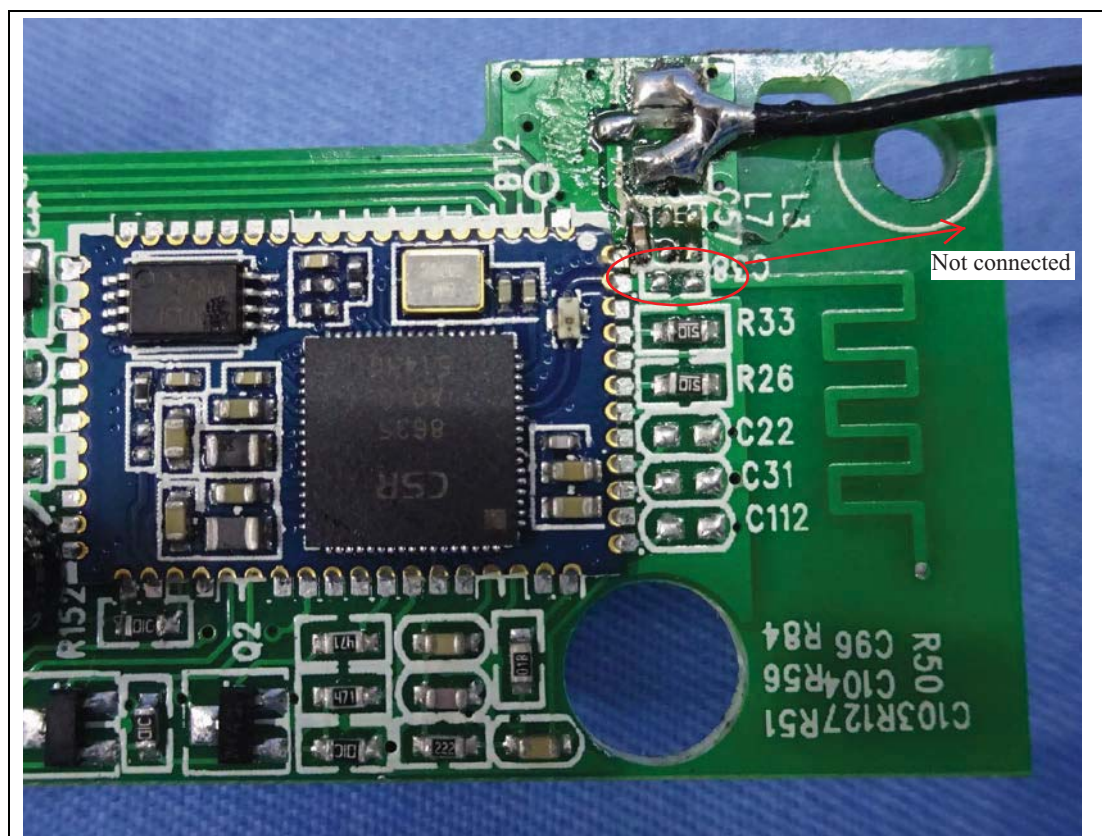


Date: 2015-8-5

To whom may concern,

We, Zound Industries, declares that the product Portable stereo loudspeaker (model: Stockwell) only use the integral antenna, the PCB antenna is disconnection. On the followed photo, you can see that the switch resistance is connected to the integral antenna but not the PCB antenna.



Dated this 08/05/2015

By: Nils Noren.
Signature

Nils Noren
Printed

Title: Technical Manager