

IMPORTANT SAFETY INSTRUCTIONS

IMPORTANT SAFETY INSTRUCTIONS

- Read these instructions – All the safety and operating instructions should be read before this product is operated.
- Keep these instructions – The safety and operating instructions should be retained for future reference.
- Heed all warnings – All warnings on the appliance and in the operating instructions should be adhered to.
- Follow all instructions – All operating and use instructions should be followed.

WARNING!

- WARNING – To reduce the risk of fire or electric shock, do not expose this apparatus to rain or moisture. The apparatus shall not be exposed to dripping or splashing and that objects filled with liquids, such as vases, shall not be placed on apparatus.
- WARNING – do not cover.
- WARNING – only use attachments/accessories specified by the manufacturer (such as the exclusive supply adapter, battery etc).
- WARNING – the plug is the main disconnect device and should be used as such. The disconnect device should remain readily accessible.
- WARNING – this active loudspeaker may emit high sound pressure levels.
- WARNING – do not listen too close to the active loudspeaker.
- WARNING – do not listen for an extended period of time at a high sound pressure level.
- WARNING – do not attempt to remove the active loudspeaker chassis, there are no user serviceable parts.
- WARNING – do not plug a guitar into the Camden.
- WARNING – do not insert body parts or objects into the bass port for risk of injury.
- DANGER – of dropping the product.
- DANGER – of sharp corners.

MOISTURE AND HUMIDITY

- The active loudspeaker should be located in a place free from moisture and water.
- Do not use this apparatus near water. Do not expose it to rain or dripping water. Do not splash water on it.

INSTALLATION

- Do not install near any heat sources such as radiators, heat registers, stoves, or other apparatus (including amplifiers) that produce heat.
- No naked flame sources, such as lighted candles, should be placed on the active loudspeaker.
- Do not block any ventilation openings. Install in accordance with the manufacturer's instructions.
- Use only with the cart, stand, tripod, bracket, or table specified by the manufacturer, or sold with the apparatus. When a cart is used, use caution when moving the cart/apparatus combination to avoid injury from tip-over.



CONNECTION

- Connect the active loudspeaker according to the instructions in the manual.
- Connect the active loudspeaker only to the correct mains voltage as shown on the equipment.
- Protect the power cord from being walked on or pinched particularly at plugs, convenience receptacles, and the point where they exit the apparatus.
- Use only power cables of the type specified in the operating instructions or as marked on the active loudspeaker. Do not substitute the separate power cable included with this active loudspeaker with any other power supply – use only the power cable provided by the manufacturer.
- Do not defeat the safety purpose of the polarized or grounding-type plug. A polarized plug has two blades with one wider than the other. A grounding plug has two blades and a third grounding prong. The wide blade or the third prong are provided for your safety. If the provided plug does not fit into your outlet, consult an electrician for replacement of the obsolete outlet.
- Unplug this apparatus during lightning storms or when unused for long periods of time.
- Do not install in an area that impedes access to the power plug. Disconnecting the power plug is the only way to completely remove power to the product and the plug must be readily accessible at all times.

CLEANING

- Clean only with dry cloth.

MAINTENANCE

- Refer all servicing to qualified service personnel. Servicing is required when the apparatus has been damaged in any way, such as power-supply cord or plug is damaged, liquid has been spilled or objects have fallen into the apparatus, the apparatus has been exposed to rain or moisture, does not operate normally, or has been dropped.
- The internal battery is user replaceable according to the instructions in this manual. Only use batteries recommended by Zound Industries and intended for the Camden active loudspeaker.
- CAUTION: These servicing instructions are for use by qualified service personnel only. To reduce the risk of electric shock, do not perform any servicing unless you are qualified to do so.

COMPLIANCE MARKS



CAUTION: To prevent the risk of electric shock, do not remove cover (or back plate). There are no user serviceable parts inside. Refer servicing to qualified service personnel.



This appliance may not be treated as regular household waste. Management of WEEE (Waste Electrical and Electronic Equipment) is applicable in member states of the European Union and other European countries with individual national policies on the management of WEEE. If you need more information on the collection, reuse and recycling systems, please contact your local or regional waste administration facility.



KAGA HIGHTEC CO. LTD

Japan PSE Mark. The product complies with the following standards J60065 (H23), ARIB STD T-66 Ver.3.6, J55013 (H22).



CONFORMS TO
ANSI/UL STD. 60065
CERTIFIED TO
CAN/CSA STD. C22.2
No. 60065

This product conforms to ANSI/UL Std. 60065 and is Certified to CAN/CSA Std. C22.2 No. 60065.



The product complies with the following European directives: the electromagnetic compatibility directive 2004/108/EC. The low voltage directive 2006/95/EC.



This equipment is a Class II or a double insulated electrical appliance. It has been designed in such a way that it does not require a safety connection to electrical earth.



This device complies with Part 15 rules FCC. Operation is subject to two following conditions: (1) This device may not cause harmful interference, and (2) this device must accept any interference received, including interference may cause undesired operation.

Changes or modifications not expressly approved by the party responsible for compliance could void your authority to operate the equipment.

This device complies with Industry Canada's licence-exempt RSSs. Operation is subject to the following two conditions:

- (1) This device may not cause interference; and
- (2) This device must accept any interference, including interference that may cause undesired operation of the device.

Cet appareil est conforme aux CNR exemptes de licence d'Industrie Canada. Son fonctionnement est soumis aux deux conditions suivantes :

- (1) Ce dispositif ne peut causer d'interférences ; et
- (2) Ce dispositif doit accepter toute interférence , y compris les interférences qui peuvent causer un mauvais fonctionnement de l'appareil.

The content of this document is for information purposes only. Zound Industries reserves the right to change information without prior notifications and at any time.

LANGUAGE INDEX

ENGLISH

SECTIONS

PAGE

001. SAFETY INSTRUCTIONS	014. USING THE CAMDEN WITH YOUR DEVICES
002. COMPLIANCE MARKS	015. CHOOSING YOUR SOURCE
003. LANGUAGE INDEX	016. BLUETOOTH CONNECTION
005. THE CAMDEN	020. CABLE CONNECTION
006. BOX CONTENTS	022. STANDBY MODES
008. GENERAL DESCRIPTION	025. REPLACING BATTERY
011. TURNING THE POWER ON/OFF	027. TECHNICAL INFORMATION
012. ADJUSTING THE SOUND	028. TROUBLE SHOOTING
013. CHARGING THE BATTERY	032. WARRANTY INFO

FRENCH - FRANÇAIS

PAGE 029

JAPANESE - 日本語

PAGE 057

GERMAN - DEUTSCH

PAGE 085

SPANISH - ESPAÑOL

PAGE 113

ITALIAN - ITALIANO

PAGE 141

SIMPLIFIED CHINESE - 简体中文

PAGE 169

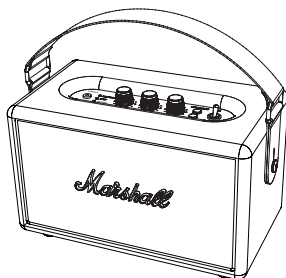
TRADITIONAL CHINESE - 繁體中文

PAGE 197

**NOTE: ONCE TRANSLATION IS DONE
CHANGE PAGE NUMBERS TO MATCH**

Marshall
AMPLIFICATION

CAMDEN



YOU ARE NOW A OWNER OF A MARVELLOUS ACTIVE STEREO LOUDSPEAKER. THE **CAMDEN** IS PORTABLE WITH BIG SOUND AND MODEST SIZE. IT IS YOUR TICKET TO THE OUTDOORS SO GET OUT AND ENJOY THE WEATHER.

THE CAMDEN IS NOT ONLY EASY TO CARRY BUT PACKING UP TO 20 HOURS OF PLAYING TIME. IT IS THE PERFECT COMPANION WHETHER IT'S A SUNNY DAY IN THE PARK, RELAXING ON THE BALCONY OR THAT WEEKEND CAMPING TRIP.

YES, YOU WANT TO EXPERIENCE YOUR FREEDOM RIGHT AWAY, BUT JUST A SEC. READ THIS MANUAL CAREFULLY AND HOLD ON TO IT, ALONG WITH THE INCLUDED WARRANTY INFORMATION IN CASE YOU EVER NEED IT.

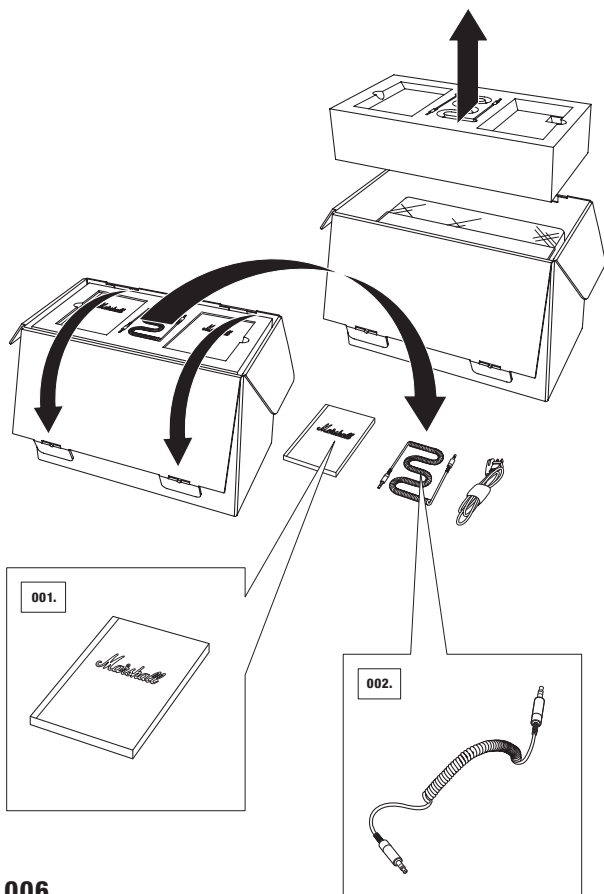
THE CAMDEN IS QUITE COMPACT AND TINY, BUT AS A TRUE **MARSHALL** IT WILL SURPRISE YOU. WE'RE NOT JOKING - IT'S LOUD. DESPITE BEING LOUDER THAN MOST, THE SOUND IS STILL WELL DEFINED AND BALANCED. IT CAN BE EVEN FURTHER IMPROVED BY TWEAKING THE ANALOGUE CONTROLS TO YOUR LIKING.

JUST LIKE ITS OLDER SIBLINGS THE CAMDEN HAS THAT CLASSIC BEAUTY. WRAPPED IN DURABLE VINYL, WITH THE VINTAGE-STYLE FRONT FRET AND OF COURSE THE ICONIC MARSHALL SCRIPT LOGO. ALL THIS AND THE GUITAR-STYLE STRAP BUTTONS THAT HOLDS THE STURDY CARRY HANDLE GIVES THE CAMDEN A TIMELESS LOOK.

CONNECT THE CAMDEN TO YOUR SOUND SOURCE USING THE INCLUDED COIL CORD WITH 3.5MM PLUGS OR CUT THE CORD, CONNECTING IT VIA WIRELESS BLUETOOTH. NOW USE YOUR FREEDOM. GRAB THE CAMDEN BY THE HANDLE AND JOIN YOUR MATES, THEY'RE WAITING, AND REMEMBER TO **TURN IT UP.**

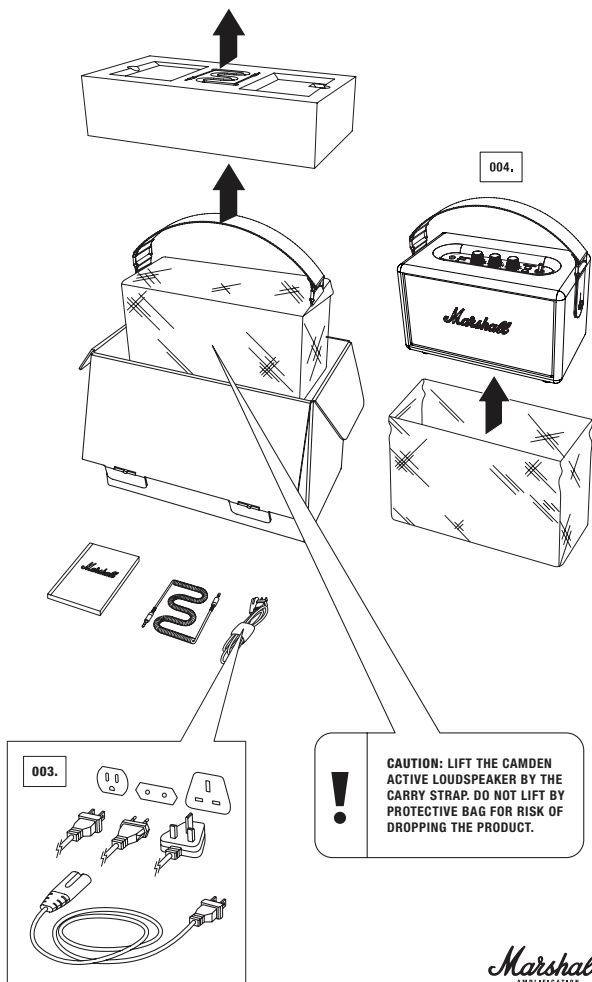
BOX CONTENTS

- 001. USER MANUAL AND WARRANTY INFORMATION
- 002. DOUBLE-ENDED COIL CORD WITH 3.5MM STEREO PLUGS TO CONNECT TO YOUR MUSIC PLAYER
- 003. POWER CORD
- 004. MARSHALL CAMDEN ACTIVE STEREO LOUDSPEAKER



006.

CAMDEN



GENERAL DESCRIPTION

001. INPUT FOR 3.5MM
STEREO PLUG

002. BATTERY LED INDICATOR

003. SOURCE LED INDICATORS

004. VOLUME KNOB

005. BASS KNOB

006. TREBLE KNOB

007. PAIR BUTTON

008. SOURCE/WAKE BUTTON

009. POWER SWITCH

010. BACK PLATE

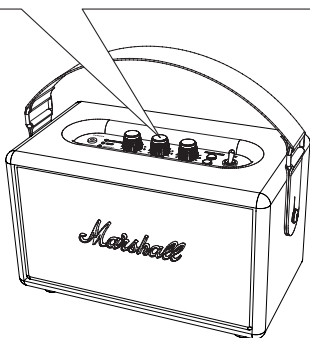
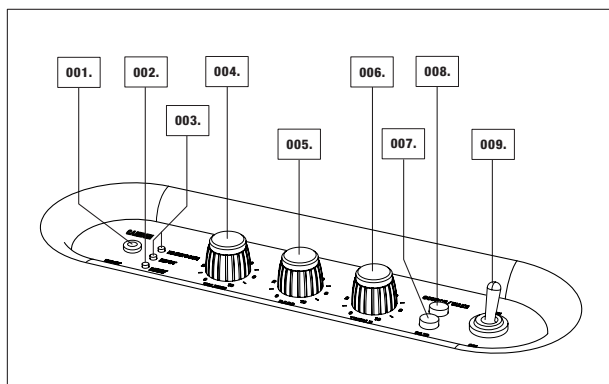
011. BASS PORT

012. DETACHABLE CARRY
STRAP

013. BATTERY HATCH

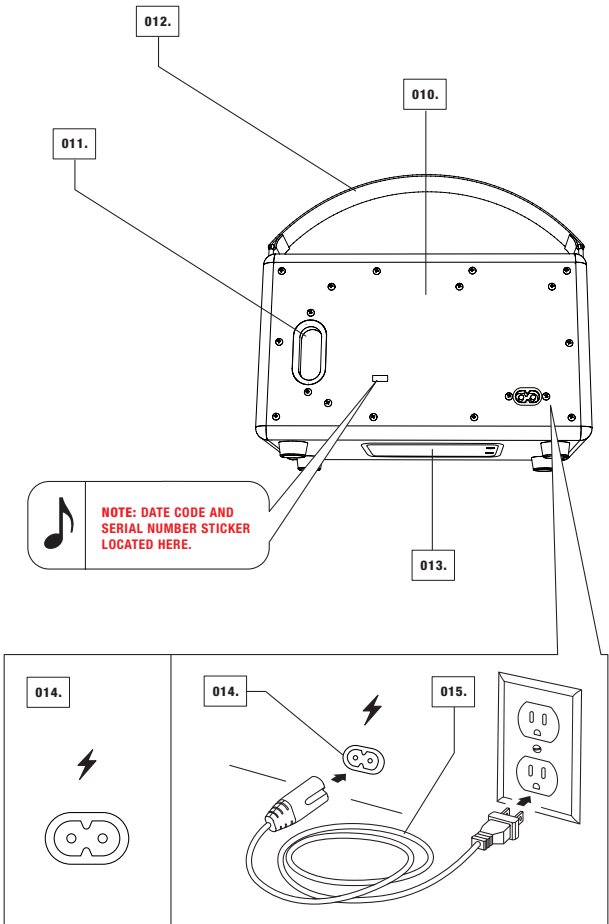
014. POWER JACK

015. POWER CORD



008.

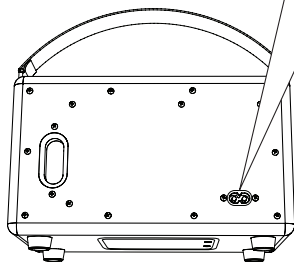
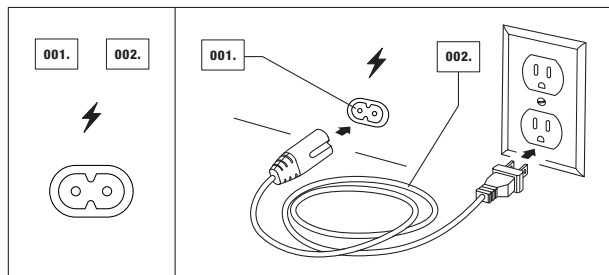
CAMDEN



PLUGGING IN THE CAMDEN LOUDSPEAKER

001. INSERT THE POWER CORD INTO THE POWER JACK ON THE BACK OF THE LOUDSPEAKER.

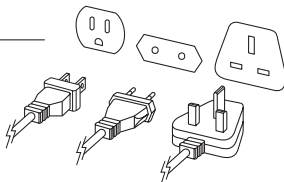
002. CONNECT THE CORRECT POWER CORD TO THE WALL SOCKET.



CAUTION: ALWAYS UNPLUG THE POWER CORD FROM THE WALL SOCKET BEFORE DISCONNECTING IT FROM THE LOUDSPEAKER.



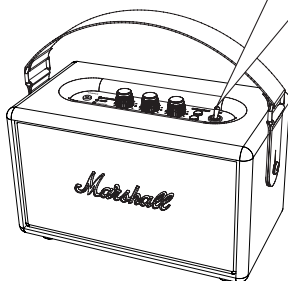
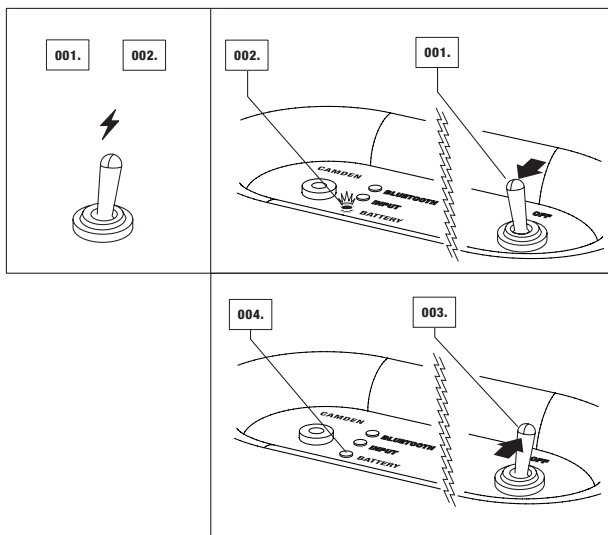
NOTE: A POWER CORD WITH AN APPROPRIATE PLUG FOR YOUR REGION IS SUPPLIED



010.

TURNING THE POWER ON/OFF

001. SWITCH THE POWER SWITCH TO 'ON' TO TURN ON THE CAMDEN.
002. THE LED FOR THE LAST USED SOURCE WILL LIGHT UP. WHEN THE BATTERY IS CHARGING, THE BATTERY LED WILL FLASH.
003. TO TURN THE LOUDSPEAKER OFF, SWITCH OFF THE POWER SWITCH.
004. THE LED INDICATORS WILL TURN OFF.



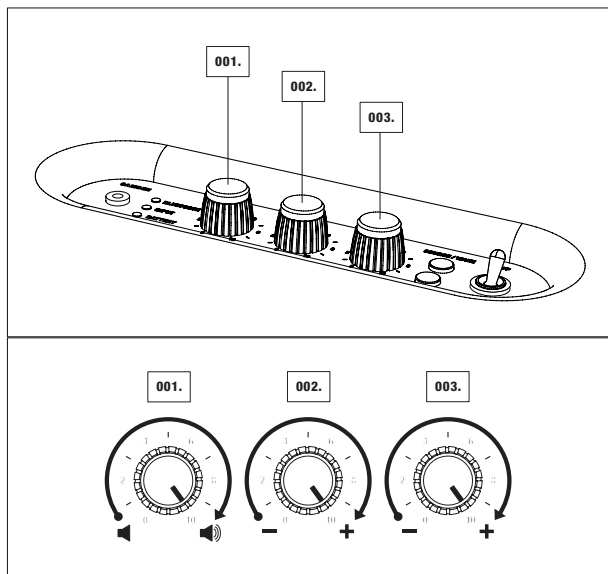
ADJUSTING THE SOUND

TURN THE KNOB TO ADJUST THE:

001. VOLUME

002. BASS

003. TREBLE



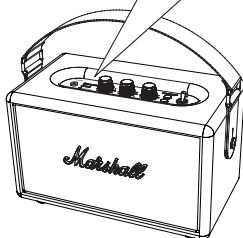
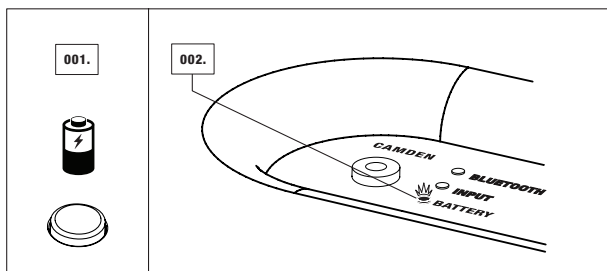
012.

CHARGING THE BATTERY

THE CAMDEN IS EQUIPPED WITH A INTERNAL BATTERY SUPPORTING A PLAYING TIME FOR UP TO 20 HOURS AT MID VOLUME. THE BATTERY IS RECHARGEABLE AND CAN BE FULLY CHARGED IN 3 TO 4 HOURS, WHEN COMPLETELY DISCHARGED.

IF THE BATTERY LED STARTS TO FLASH WHEN THE LOUDSPEAKER IS ON BATTERY POWER, THE BATTERY HAS LESS THAN 20% CHARGE LEFT.

001. PLUG IN THE LOUDSPEAKER TO MAINS POWER AND SET THE POWER SWITCH TO 'ON'.
002. THE BATTERY LED STARTS FLASHING TO INDICATE THAT THE BATTERY IS CHARGING.
003. WHEN THE BATTERY LED CHANGES TO A FIXED LIGHT, THE CAMDEN IS FULLY CHARGED.



NOTES:

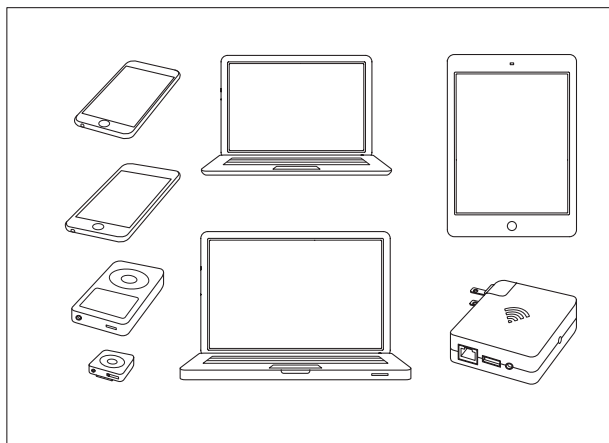
- THE POWER SWITCH HAS TO BE SWITCHED ON FOR THE THE DEVICE TO CHARGE. IF THE UNIT IS PLUGGED IN BUT TURNED OFF THEN THE UNIT WILL NOT CHARGE.
- THE LOUDSPEAKER CAN BE USED WHILE CHARGING BATTERY.



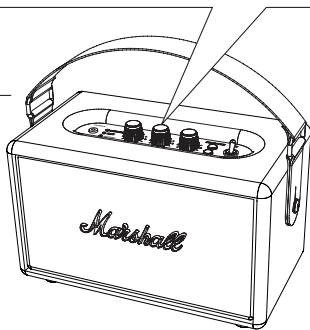
USING THE CAMDEN WITH YOUR DEVICES

THERE ARE TWO WAYS TO CONNECT YOUR PHONE, TABLET, LAPTOP TO YOUR LOUDSPEAKER, WHETHER USING A PHYSICAL CORD OR VIA WIRELESS BLUETOOTH®. BELOW YOU WILL FIND MORE DETAILS ABOUT THE CONNECTION SOURCES, IN TWO CATEGORIES:

- WIRELESS CONNECTION VIA BLUETOOTH
- CONNECTION VIA THE 3.5MM STEREO PLUG



CAUTION: MAKE SURE THAT THE VOLUME IS SET TO LOW ON BOTH THE CAMDEN ACTIVE LOUDSPEAKER AND THE MUSIC PLAYER WHEN YOU START PLAYING MUSIC.

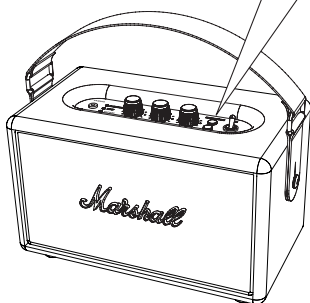
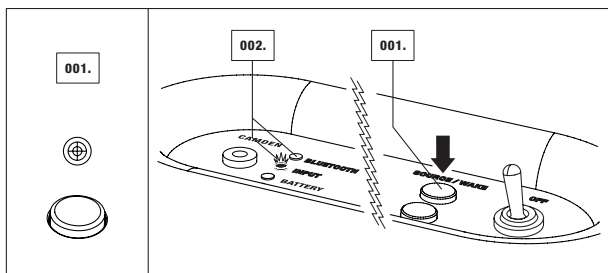


CHOOSING YOUR SOURCE

001. PUSH THE SOURCE/WAKE BUTTON TO CHOOSE YOUR SOURCE OR TO SWITCH BETWEEN CONNECTED SOURCES.
002. A LIT LED INDICATES WHICH SOURCE YOU HAVE SELECTED.

ORDER OF CONNECTIONS (FROM TOP TO BOTTOM):

- BLUETOOTH
- INPUT - 3.5MM STEREO PLUG



CONNECTING VIA BLUETOOTH

WITH THE HELP OF BLUETOOTH TECHNOLOGY, BLUETOOTH-COMPATIBLE DEVICES CAN EASILY BE CONNECTED TO EACH OTHER OVER A SHORT WIRELESS CONNECTION. USE YOUR BLUETOOTH-ENABLED SMARTPHONE, TABLET OR COMPUTER TO STREAM MUSIC DIRECTLY TO YOUR CAMDEN. FOLLOW THESE STEPS TO CONNECT YOUR CAMDEN WIRELESSLY TO YOUR BLUETOOTH DEVICE.

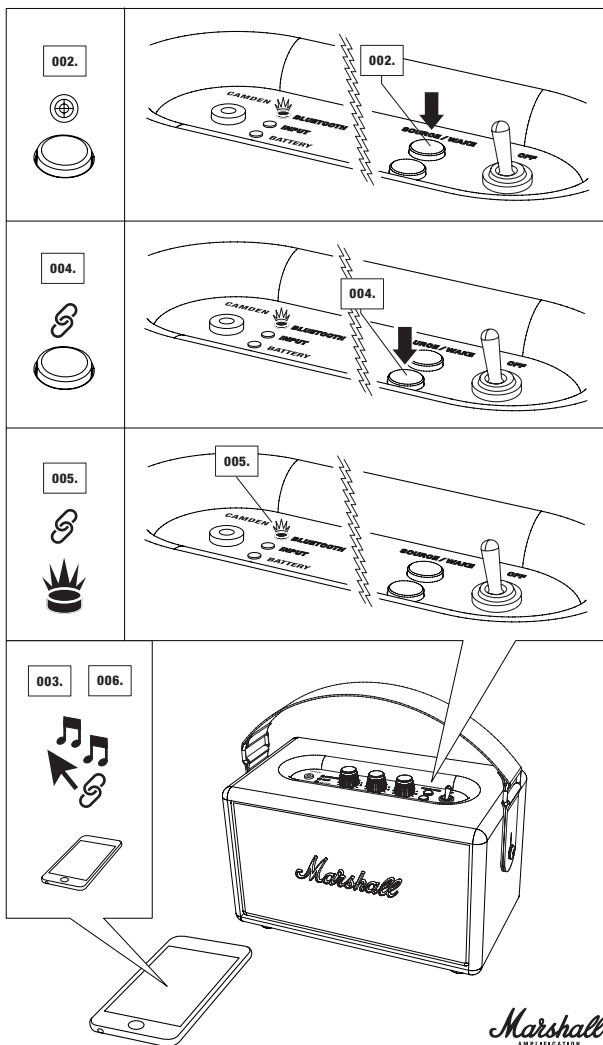
001. TURN THE CAMDEN ACTIVE LOUDSPEAKER ON.
002. SELECT BLUETOOTH AS SOURCE BY PUSHING THE SOURCE/WAKE BUTTON UNTIL THE BLUETOOTH LED IS LIT.
003. ACTIVATE THE BLUETOOTH FUNCTIONALITY ON YOUR DEVICE (SMARTPHONE, TABLET, COMPUTER).
004. PUSH THE PAIR BUTTON. THE LED ON THE CAMDEN WILL START TO FLASH RAPIDLY IN RED.
005. ON YOUR DEVICE, SELECT THE CAMDEN SPEAKER FROM YOUR LIST. THE LED ON THE SPEAKER WILL TURN TO A STEADY RED.
006. YOU ARE NOW READY TO PLAY YOUR MUSIC WIRELESSLY VIA THE LOUDSPEAKER.



NOTES:

- YOU ONLY NEED TO PAIR YOUR SMARTPHONE/TABLET/COMPUTER WITH THE CAMDEN ONCE, AFTER WHICH THE DEVICE WILL BE INCLUDED IN THE LIST OF YOUR BLUETOOTH DEVICES.
- WHEN PAIRING A NEW DEVICE, PUSH THE PAIR BUTTON AGAIN AND REPEAT STEPS ABOVE.
- UP TO SIX DEVICES CAN BE STORED IN THE LOUDSPEAKER'S MEMORY.

CONNECTING VIA BLUETOOTH



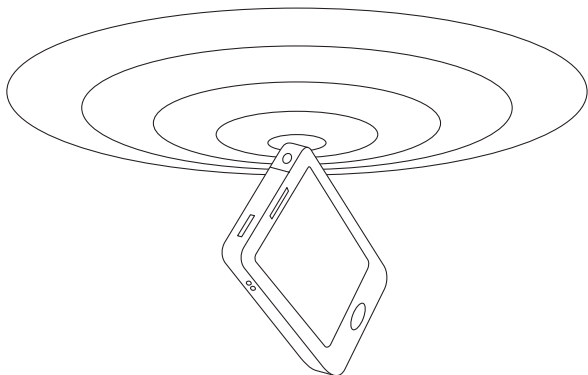
LOCATING YOUR DEVICES VIA BLUETOOTH

SELECT BLUETOOTH AS THE INPUT SOURCE BY PUSHING THE SOURCE/WAKE BUTTON. BLUETOOTH IS NOW ACTIVATED, WITH A FLASHING RED LED IF NO DEVICE IS CONNECTED, AND A SOLID RED LED IF A DEVICE IS CONNECTED.

THE LOUDSPEAKER WILL NOW AUTOMATICALLY SEARCH FOR PAIRED DEVICES FOR THREE MINUTES, AND THE LED WILL RAPIDLY FLASH RED DURING THE SEARCH. THE CAMDEN WILL LOCATE DEVICES WITHIN RANGE THAT HAVE PREVIOUSLY BEEN CONNECTED AND WILL CONNECT THEM AUTOMATICALLY.

IF NO DEVICES ARE LOCATED WITHIN THREE MINUTES, THE LOUDSPEAKER WILL REVERT TO STANDBY STATUS (THERE IS MORE INFORMATION ON THE STANDBY MODES ON PAGE 021).

IF THE PAIR BUTTON IS PUSHED WHILE BLUETOOTH IS SELECTED AS THE AUDIO SOURCE, THE LOUDSPEAKER WILL PERFORM A NEW SEARCH FOR THREE MINUTES AFTERWARDS, DURING WHICH TIME, THE LED WILL RAPIDLY FLASH RED.

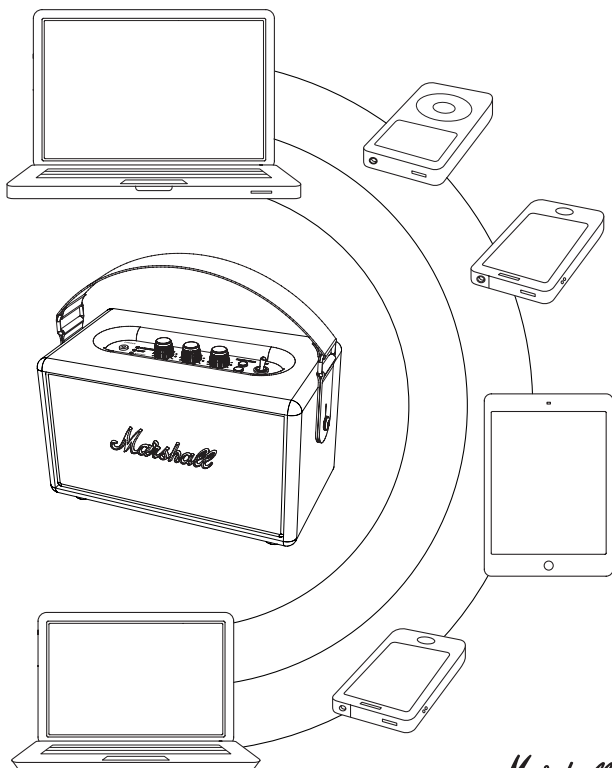


NOTES:

- THE AUTO CONNECTION FUNCTION WILL NOT WORK IF THE CAMDEN IS TURNED OFF VIA THE MAIN POWER SWITCH AT THE TOP OF THE UNIT
- IF A SEVENTH DEVICE IS CONNECTED, DEVICE **A** WILL NO LONGER BE MEMORISED.
- ALWAYS START BLUETOOTH IN YOUR SMARTPHONE/COMPUTER FIRST, AND THEN START THE LOUDSPEAKER TO RECEIVE AN AUTO CONNECTION.

BLUETOOTH AUTO CONNECTION

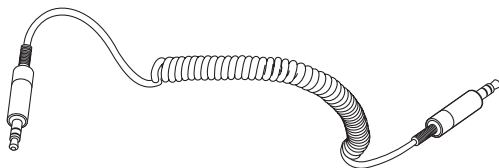
IF A DEVICE IS MOVED OUTSIDE THE RANGE OF THE CAMDEN ACTIVE LOUDSPEAKER (APPROXIMATELY 10 METRES WITHOUT OBSTACLES), THAT DEVICE IS THEN DISCONNECTED. THE DEVICE IS AUTOMATICALLY CONNECTED AGAIN WHEN IT IS MOVED BACK WITHIN RANGE. THE CAMDEN STORES UP TO SIX DEVICES AND ALWAYS STARTS SEARCHING FOR THE LAST DEVICE THAT HAS BEEN CONNECTED. IF THE CAMDEN HAS BEEN CONNECTED TO DEVICES **A-B-C-D-E-F** IN THAT ORDER, DEVICE **F** IS GIVEN FIRST PRIORITY, WHILE DEVICE **A** IS GIVEN LAST PRIORITY. EVERY TIME THE CAMDEN STARTS UP, IT WILL PERFORM AN AUTO CONNECTION OF DEVICES WITHIN ITS RANGE.



Marshall
AMPLIFICATION

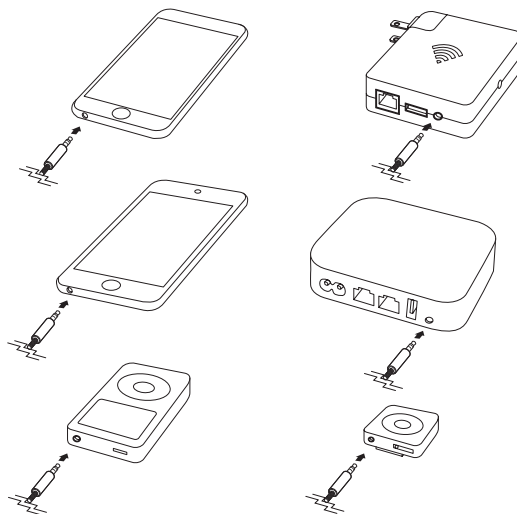
CONNECTING SOURCES BY CABLE

THERE IS ANOTHER WAY TO CONNECT TO YOUR CAMDEN – THE OLD FASHIONED WAY, USING A CORD AND THE 3.5MM INPUT.



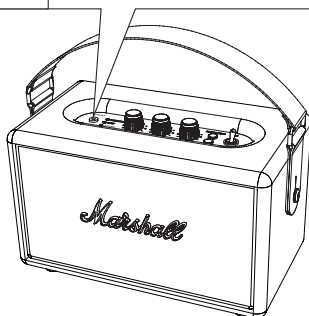
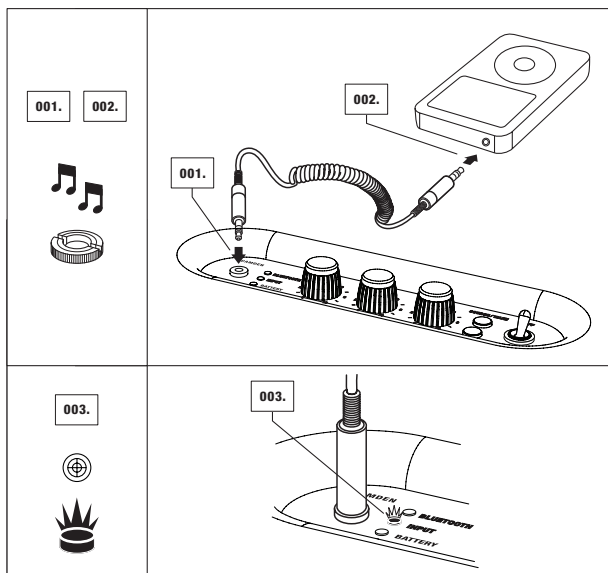
INPUT - 3.5MM STEREO PLUG

USE THE DOUBLE-ENDED COIL CORD WITH 3.5MM PLUGS TO CONNECT TO AUDIO SOURCES THAT HAVE AUDIO OUTPUT SUCH AS A MOBILE TELEPHONE, IPHONE/IPAD/IPOD, MP3 PLAYER, OR AIRPORT EXPRESS.



INPUT - 3.5MM STEREO PLUG

001. CONNECT THE CORD WITH THE 3.5MM STEREO PLUG TO THE INPUT ON THE LOUDSPEAKER.
002. CONNECT THE CORD WITH THE 3.5MM STEREO PLUG TO THE MUSIC PLAYER.
003. SELECT INPUT AS SOURCE BY PUSHING THE SOURCE/WAKE BUTTON UNTIL THE INPUT LED IS LIT (SEE PAGE 015).



STANDBY MODES

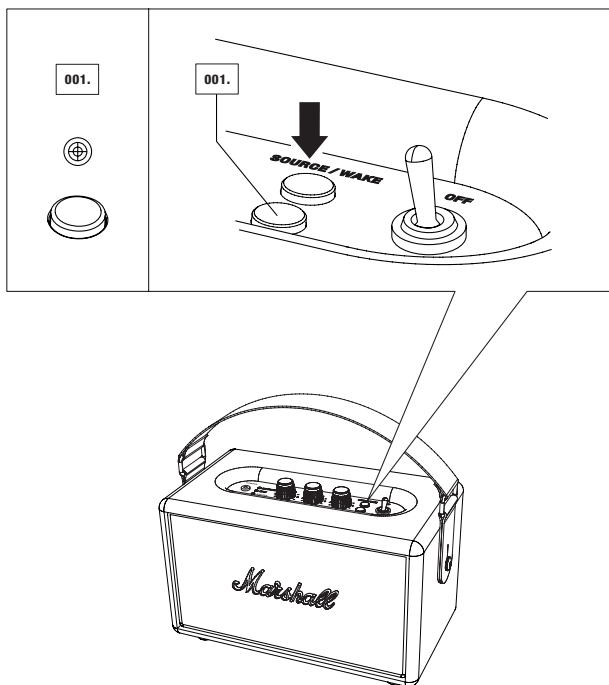
DEPENDING ON WHETHER THE CAMDEN IS RUNNING ON BATTERIES OR MAINS POWER IT USES TWO DIFFERENT STANDBY MODES. THIS IS IN ORDER TO COMPLY TO THE EUROPEAN UNION REGULATION THAT STATES THAT ELECTRONIC DEVICES MAY ONLY HAVE 0.5W POWER CONSUMPTION IN STANDBY MODE (THE EUROPEAN DIRECTIVE ON ENERGY RELATED PRODUCTS, OR ERP).

THE CAMDEN ACTIVE STEREO LOUDSPEAKER WILL GO INTO STANDBY MODE AFTER 20 MINUTES OF NOT RECEIVING A SOUND SIGNAL OR AFTER THREE MINUTES OF NOT LOCATING ANY BLUETOOTH DEVICE WHEN IN PAIRING MODE. DEPENDING ON WHETHER THE CAMDEN IS RUNNING ON BATTERY POWER OR IS CONNECTED TO MAINS POWER, THE WAKE UP BEHAVIOUR DIFFERS.

WAKING UP - BATTERY POWER

WHEN THE CAMDEN GOES INTO STANDBY MODE WHILE RUNNING ON BATTERY POWER, THE LOUDSPEAKER ENTERS A LOW-POWER STATE. IT WILL NOT AUTOMATICALLY WAKE UP WHEN YOU BEGIN PLAYING MUSIC AND IT WILL ALSO NOT SHOW UP AS AN AVAILABLE DEVICE IN YOUR BLUETOOTH CONNECTION LIST.

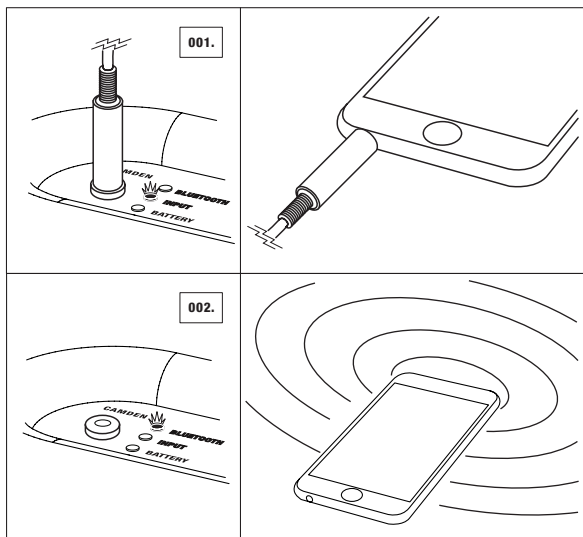
001. TO ACTIVATE THE CAMDEN AFTER THE UNIT HAS GONE TO STANDBY MODE, PUSH THE SOURCE/WAKE BUTTON ONCE. THIS WILL BRING THE CAMDEN BACK TO LIFE AND READY TO PLAY AGAIN.



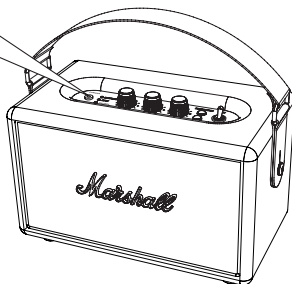
WAKING UP - MAINS POWER

WHEN CONNECTED TO MAINS POWER, THE CAMDEN WILL AUTOMATICALLY WAKE UP WHEN THE LAST USED SOURCE IS PLAYED OR THE SOURCE/WAKE BUTTON IS PUSHED.

001. IF THE LAST SOURCE USED WAS THE 3.5MM STEREO PLUG INPUT, THE LOUDSPEAKER WAKES UP AUTOMATICALLY WHEN THE CONNECTED SOURCE BEGINS TO PLAY.
002. IF A BLUETOOTH DEVICE WAS USED AS THE LAST SOURCE, USING THE LAST USED BLUETOOTH DEVICE WILL WAKE THE CAMDEN UP.



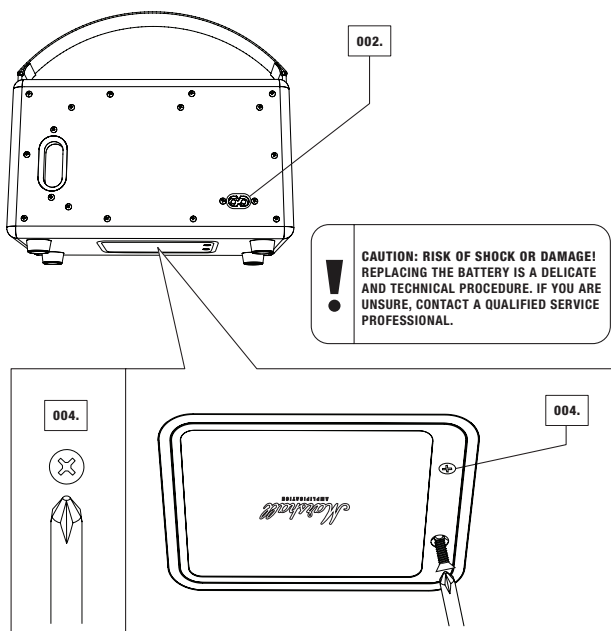
NOTE: IF YOU WANT TO PLAY ANOTHER BLUETOOTH DEVICE INSTEAD OF THE LAST ONE USED, PUSH THE SOURCE/WAKE BUTTON ONCE TO FIND PAIRED DEVICES (SEE PAGE 018).



REPLACING THE INTERNAL BATTERY

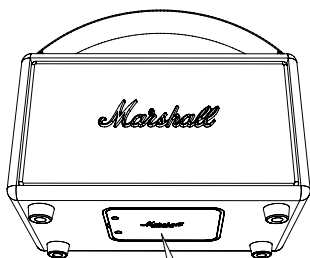
IF THE INTERNAL BATTERY IS BROKEN OR WORN OUT, YOU CAN REPLACE IT WITH A NEW ONE. THE FAULTY BATTERY PACK MUST ALWAYS BE RECYCLED ACCORDING TO LOCAL REGULATIONS.

001. UNPLUG THE POWER CORD FROM THE WALL SOCKET.
002. DISCONNECTED THE POWER CORD FROM THE CAMDEN POWER JACK.
003. CAREFULLY PLACE THE CAMDEN UPSIDE DOWN ON A FLAT, CLEAN SURFACE.
004. USING A PHILLIPS SCREWDRIVER, UNSCREW THE TWO SCREWS ON THE BATTERY HATCH ON THE BOTTOM OF THE LOUDSPEAKER.
005. OPEN THE BATTERY HATCH AND REMOVE IT FROM THE LOUDSPEAKER.

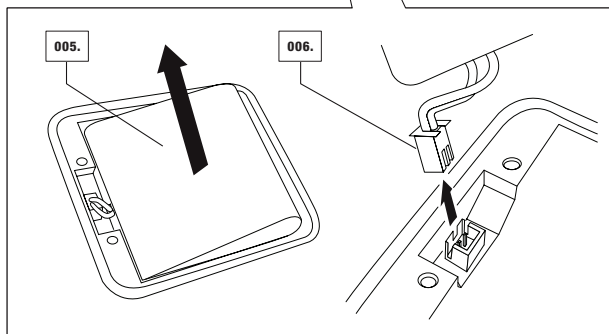


REPLACING THE INTERNAL BATTERY

006. CAREFULLY LIFT THE BATTERY PACK WITHOUT PULLING ON THE CABLE CONNECTING THE BATTERY TO THE LOUDSPEAKER.
007. GENTLY PULL ON THE BATTERY PLUG, AWAY FROM THE LOUDSPEAKER TO DISCONNECT AND REMOVE THE BATTERY.
008. REVERSE THE PROCESS TO INSTALL THE NEW BATTERY.



CAUTION:
DO NOT PULL ON
THE BATTERY CABLE.



026.

TECHNICAL INFORMATION

SOUND SPECIFICATION

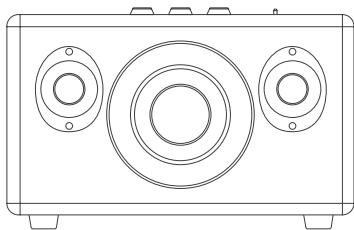
- ACTIVE STEREO LOUDSPEAKER WITH BASS REFLEX SYSTEM
- TONE CONTROLS:
- BASS: 180HZ, +6DB TO -12DB
- TREBLE: 3KHZ, +6DB TO -12DB
- CLASS D AMPLIFIER: 2X5W+1X15W
- WOOFER: 1X 4"
- DOME TWEETER: 2X 3/4", FERROFLUID COOLED
- MAX SPL: 100DB SPL @ 1M (GROUND PLANE 300HZ, 1%THD)
- FREQUENCY RANGE: 62-20.000HZ
- CROSSOVER FREQUENCY: 4200HZ

CONNECTIVITY

- BLUETOOTH: STANDARD V4.0
- INPUT - 3.5MM: 1X

TECHNICAL INFORMATION

- MAINS INPUT VOLTAGE: 100-240VAC/70W
- ABSOLUTE MIN/MAX: 90-264VAC
- MAINS FREQUENCY: 50-60HZ
- *AUDIO* MAX PEAK POWER CONSUMPTION: 70W
- TWO STANDBY MODES: POWERSAVER MODE (0,40W) AND STANDARD MODE (3,5W)
- MAX POWER OUTPUT: 30W RMS
- BATTERY TYPE: 4X 3,7V LI-IO BATTERIES, 2200MAH
- BATTERY PLAYING TIME: UP TO 20H (50% VOLUME)
- WEIGHT: 3.00KG
- SIZE: 242 X 140 X 140MM



NOTE: THE FRONT FRET IS NOT REMOVEABLE. THIS ILLUSTRATION INTENDS TO SHOW THE INTERNAL SPEAKER LAYOUT. DO NOT ATTEMPT TO REMOVE THE FRONT FRET FOR RISK OF DAMAGING YOUR ACTIVE LOUDSPEAKER.

CAMDEN

PROBLEM

CAUSE

**THE LOUDSPEAKER
WILL NOT TURN ON.**

The internal battery is discharged or the power cord is not plugged into a working wall socket or not plugged into the power jack on the back of the loudspeaker.

**THE SOUND IS WEAK
OR THERE IS NO
SOUND AT ALL.**

The 3.5mm cord/input cable/signal cable is not correctly connected to either the loudspeaker or the music player.

The volume level is too low on the loudspeaker.

The volume level is too low on the music player.

**THE SOUND IS
DISTORTED.**

The volume level is too high.

The original sound file (mp3) is of poor quality.

Excessive playback volume.

Too much bass/treble boost.

**SHARP CRACKLING/
CLICKING ON STRONG
PASSAGES/TRANSIENTS.**

Clipping when the amplifier runs out of power.

**ERRATIC
PERFORMANCE.**

Interference from another source or electronic device.

TROUBLE SHOOTING

ACTION

Plug the power cord into a working wall socket and plug the connector into the power jack on the back of the loudspeaker to charge the battery.

Unplug and re-plug the 3.5mm cord/input cable/signal cable into both the loudspeaker and the music player.

Turn up the volume on the loudspeaker.

Turn up the volume on the music player.

Turn down the volume.

Try another sound file (mp3) or music player.

Turn down playback level on the volume knob or reduce the sound level on the music player.

Turn down the volume control on the control panel and/or music player. Reduce the bass boost on the control panel or excessive bass boost/eq on the music player.

Turn down the volume on the loudspeaker or on the music player. Reduce the bass boost.

Move the loudspeaker to another spot or turn off or move other electronic devices.

CAMDEN

PROBLEM	CAUSE
BLUETOOTH WILL NOT CONNECT.	The Camden is too far away from your device during the pairing process.
THE SOUND QUALITY IS POOR WHEN CONNECTED THROUGH BLUETOOTH.	The greater the distance between the Camden and the Bluetooth device, the poorer the sound quality will be.
BLUETOOTH CONNECTION IS BROKEN OR DISRUPTED.	The Bluetooth connection only works when it is near the device. The connection is automatically broken if the Bluetooth device moves outside of the area. The connection may even be affected due to obstacles such as walls or doors.
THE CAMDEN LOUDSPEAKER CANNOT FIND A BLUETOOTH CONNECTION.	<p>The loudspeaker cannot search or connect correctly in the following cases:</p> <ul style="list-style-type: none">• There is a strong electric field surrounding the Camden.• The Bluetooth device is turned off, not available or does not function as it should.• Please note that items such as, for example, microwave ovens, wireless network adapters, fluorescent lights and gas cookers use the same frequency range as the Bluetooth device, which could lead to electrical disturbances.
THE INTERNAL BATTERY IS NOT CHARGING	The Camden is not connected to AC mains power and switched on.
BATTERY IS NOT WORKING/BATTERY LIFE HAS DECLINED	The internal battery is broken or worn out and needs to be replaced.

TROUBLE SHOOTING

ACTION

Place the Camden closer to the Bluetooth device during the pairing process.

Move the Camden closer to the Bluetooth device. If the distance exceeds the Bluetooth device's wireless range, the connection will be lost.

Ensure that the Camden is placed near the Bluetooth device, and unobstructed by obstacles such as walls or doors.

Please ensure that there is no electrical interference surrounding the Camden, that your Bluetooth device is on and working properly.



NOTES:

- A BLUETOOTH DEVICE COULD CAUSE SOUND-RELATED OR TECHNICAL FAULTS, DEPENDING ON USE, IN THE FOLLOWING CASES:
 - WHEN SOME PART OF THE BODY IS IN CONTACT WITH THE RECEIVING/TRANSMITTING SYSTEM FOR THE BLUETOOTH DEVICE OR THE CAMDEN ACTIVE LOUDSPEAKER.
 - ELECTRICAL VARIATIONS DUE TO OBSTACLES IN THE FORM OF WALLS, CORNERS, ETC.
 - EXPOSURE TO ELECTRICAL DISRUPTIONS FROM DEVICES WITHIN THE SAME FREQUENCY BAND, FOR EXAMPLE MEDICAL EQUIPMENT, MICROWAVE OVENS AND WIRELESS NETWORKS.
- THIS WIRELESS DEVICE MAY CAUSE ELECTRICAL DISRUPTIONS DURING USE.
- YOU DO NOT NEED TO ENTER THE PIN CODE (PASSWORD) WHEN CONNECTING THE BLUETOOTH DEVICE TO THE CAMDEN. IF THE WINDOW FOR ENTERING THE PIN CODE IS DISPLAYED, YOU SHOULD ENTER <0000>.
- YOU CANNOT CONNECT TO A BLUETOOTH DEVICE THAT ONLY SUPPORTS THE HF (HANDS FREE) AREA FUNCTION.

Plug the power cord into a working wall socket and plug the connector into the power jack on the back of the loudspeaker and switch the power switch, to 'ON' position.

Replace the internal battery according to the instruction on page 025.

WARRANTY INFORMATION

INDEX

- | | |
|-----------------------------|--------------------------------|
| 258. ENGLISH | 265. ITALIAN - ITALIANO |
| 259. CZECH - CESHY | 266. SWEDISH - SVENSKA |
| 260. FRENCH - FRANÇAIS | 267. DANISH - DANSK |
| 261. JAPANESE - 日本語 | 268. DUTCH - NEDERLANDS |
| 262. GERMAN - DEUTSCH | 269. POLISH - POLSKI |
| 263. SPANISH - ESPAÑOL | 270. SIMPLIFIED CHINESE - 简体中文 |
| 264. PORTUGUESE - PORTUGUÊS | 271. TRAD. CHINESE - 繁體中文 |

**NOTE: ONCE TRANSLATION IS DONE
CHANGE PAGE NUMBERS TO MATCH**

Marshall
AMPLIFICATION

WARRANTY

ENGLISH

ONE YEAR LIMITED MANUFACTURER'S WARRANTY

LIMITED WARRANTY: Zound Industries International AB (referred to subsequently as Zound Industries) is dedicated to providing excellent products using today's advanced technology. However, electronic products may encounter technical difficulties resulting from a manufacturing defect. This is why Zound Industries offers the following, free, one (1) year limited warranty on this product to the holder of a valid proof of purchase of the product.

Zound Industries hereby warrants that, under normal use, this product will be free from defects in materials and workmanship for a period of one (1) year from the date of initial purchase.

This limited warranty does not apply to defects resulting from accident, abuse, misapplication, unauthorized repair, modification, disassembly, improper operation or maintenance, or usage not in accordance with product instructions.

Other than the limited warranty set forth above, Zound Industries (to the maximum extent permissible by law) expressly disclaims and excludes all warranties, expressed or implied, including, without limitation, the implied warranties of merchantability and fitness for a particular purpose, relating to the use or performance of the product. Some legislation do not allow the exclusion of implied warranties, so the above exclusion may not apply to you.

Zound Industries shall not be liable for special, indirect, incidental or consequential damages resulting from the use or inability to use this product, regardless of the legal theory on which the claim is based. Some legislations do not allow the exclusion or limitation of indirect, incidental or consequential damages, so the above exclusion or limitation may not apply to you.

This warranty gives you specific legal rights, and you may also have other rights which vary from legislation to legislation. This means that the limited warranty is distinct from any statutory rights under any mandatory consumer protection laws of your country applicable to you. It is intended to grant you specific, and as the case may be, additional rights, within the limits of what is permissible under such law, and does

not limit the rights you may have under applicable statutory product warrantee provisions. You may have other rights based on local laws during or after the warranty period. These rights are not excluded or limited by this limited warranty.

This limited warranty extends only to you and cannot be transferred or assigned. If any provision of this limited warranty is unlawful, void or unenforceable, that provision shall be deemed severable and shall not affect any remaining provisions.

HOW IT WORKS: If you believe your product is defective within the warranty period, please bring the product back to where the product was initially purchased. Alternatively, or with any other questions or concerns, please call customer support at +46 (0) 8-41070510, or contact us via email at support@marshallheadphones.com.

Please note: Zound Industries does NOT accept any warranty claims made by products being shipped to our address. Please read the 'HOW IT WORKS' section before making any warranty claims.

Marshall Headphones
C/O Zound Industries International AB
Box 6063
10231 Stockholm, Sweden

Designed in Stockholm • Produced in China

The content of this document is for information purposes only. Zound Industries reserves the right to change information without prior notifications and at any time.

WARRANTY

ČESKY

JEDNOLETÁ ZÁRUKA VÝROBCE

OMEZENÁ ZÁRUKA: Zound Industries International AB (dále jen „Zound Industries“) se snaží poskytovat vynikající produkty využívající nejmodernější technologie. U elektronických produktů však může dojít k technickým problémům následkem výrobních defektů. Proto společnost Zound Industries nabízí u tohoto produktu po platném prokázání nákupu následující bezplatnou jednoletou omezenou záruku.

Zound Industries tímto zaručuje, že za obvyklého používání se u tohoto produktu po dobu jednoho (1) roku od data zakoupení nebo obdržení (podle toho, co nastane později) od prodejce Zound Industries neprojeví žádné vady materiálu ani výroby.

Tato omezená záruka se nevztahuje na poškození způsobené nehodou, nesprávným používáním, neautorizovanými opravami, modifikacemi, rozložením, nesprávným provozem nebo údržbou, případně použitím, které neodpovídá příloženým instrukcím.

Kromě výše uvedeného omezené záruky Zound Industries výslovně vylučuje jakékoli záruky, uvedené či předpokládané, včetně mimo jiné předpokládané záruky prodejnosti a vhodnosti pro daný účel, které se vztahují k používání nebo výkonu produktu. V některých legislativách není odmítnutí předpokládané záruky povoleno, takže výše uvedené odmítnutí pro vás nemusí platit.

Zound Industries neodpovídá za žádné speciální, nepřímé, náhodné ani následné škody vzniklé používáním (nebo nemožností použít) produktu, bez ohledu na právní teorii, na které by se takový nárok zakládal. V některých legislativách není toto odmítnutí či omezení nepřímých, náhodných nebo následných škod povoleno, takže výše uvedené odmítnutí pro vás nemusí platit.

Tato záruka vám dává určitá zákonná práva, další můžete získat podle pro vás platné legislativy. To znamená, že tato omezená záruka se může lišit od zákonných práv udělovaných zákonem na ochranu spotřebitele země, ve které se nacházíte. Jejím cílem je udělit vám specifická, případně další práva v míře povolené daným zákonem a nijak neomezuje práva, která vám již zaručují příslušné články zákona upravující produktové záruky. V průběhu

či po uplynutí záruky můžete mít i další práva zaručená místním zákonem. Tato práva nejsou touto zárukou vyloučena ani omezena.

Tato omezená záruka platí pouze pro vás a nelze ji nijak přenášet či předávat. Pokud se ukáže, že je některá z jejich částí nezákonná, považuje se tato část za oddělitelnou a nemá vliv na jiné části.

JAK TO FUNGUJE: Pokud se u produktu projeví v záruční době určitá vada, prosím přineste jej na prodejnu, kde jste jej zakoupili. Případně se obračejte na centrum péče o zákazníky na čísle +46 (0) 8-41070510 nebo e-mailové adrese support@marshallheadphones.com.

Upozornění: Zound Industries NEPŘIJÍMÁ záruční nároky vzniklé dopravou produktu na naši adresu. Před vznesením záručního nároku si prosím projděte sekci „JAK TO FUNGUJE“.

Marshall Headphones
C/O Zound Industries International AB
Box 6063
10231 Stockholm, Sweden

Design vytvořen ve Stockholmu • Vyrobeno v Číně

Marshall
AMPLIFICATION