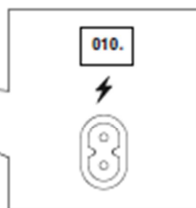
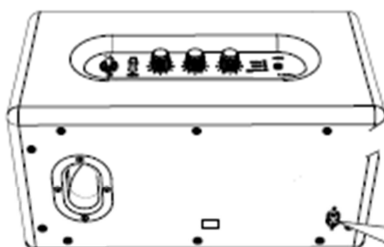
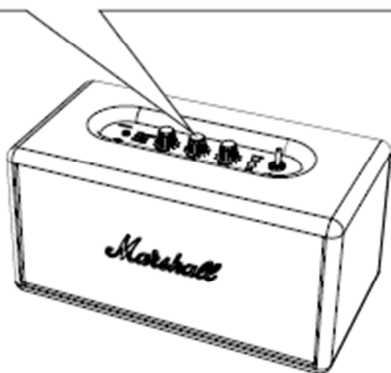
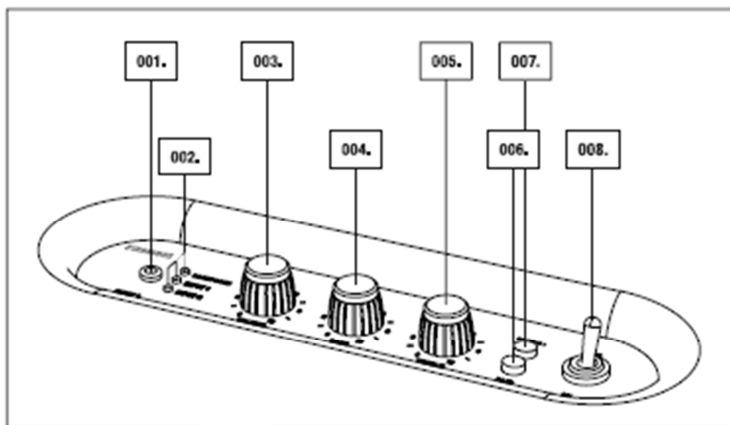


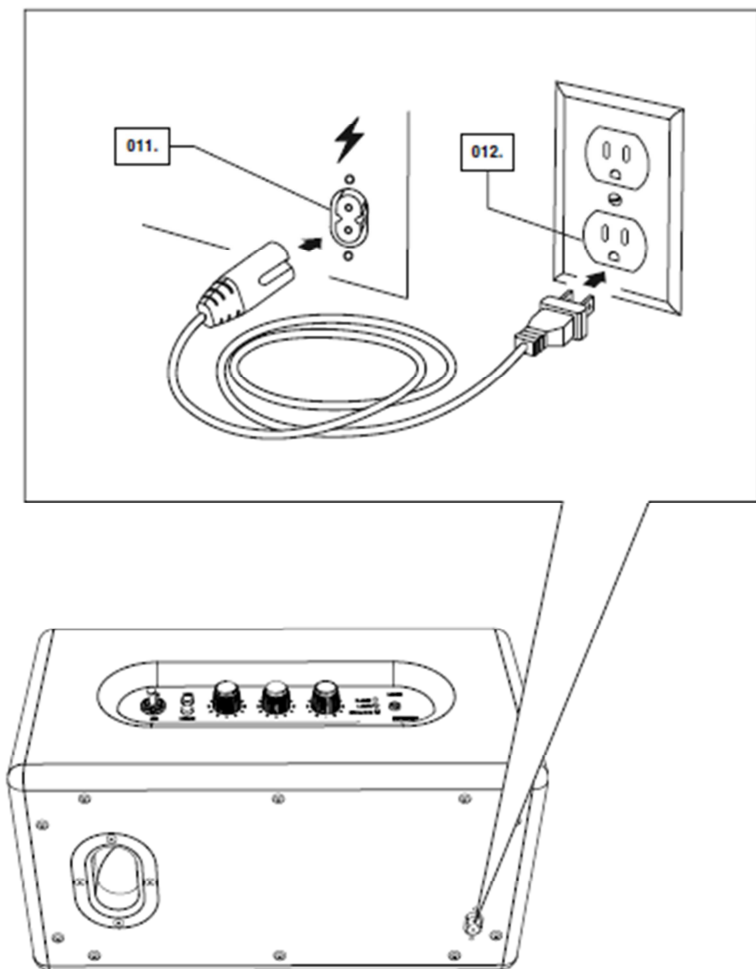
# Marshall

Model: ACTON BLUETOOTH



# Marshall

Model: ACTON BLUETOOTH



# Marshall

**Model: ACTON BLUETOOTH**

## DEVICE LAYOUT

**001. INPUT FOR 3.5MM STEREO PLUG**

**002. SOURCE INDICATORS**

**003. VOLUME KNOB**

**004. BASS KNOB**

**005. TREBLE KNOB**

**006. PAIR BUTTON**

**007. SOURCE BUTTON**

**008. POWER SWITCH**

**009. RCA INPUT (LEFT & RIGHT)**

**010. POWER JACK**

**011. PLUG THE POWER CORD INTO THE POWER JACK ON THE BACK OF THE SPEAKER.**

**012. PLUG THE POWER CORD INTO THE WALL SOCKET.**

## LEGAL NOTICE

- © 2016 Zound Industries International AB. All Rights Reserved. Zound Industries International AB will hereinafter referred to as "Zound Industries"
- Marshall, Marshall Amps, their respective logos, "Marshall", the "Marshall" trade dress as well as corporate and product identity used herein, are trademarks of Marshall Amplification PLC and may not be used without permission.
- The Bluetooth® word mark and logos are registered trademarks owned by Bluetooth SIG, Inc. and any use of such marks by Zound Industries International AB is under license.
- All other trademarks are the property of their respective owners and may not be used without permission.

For more legal information related to the Marshall product and for information related to Zound Industries, visit the website: <http://www.marshallheadphones.com>

## IMPORTANT SAFETY INSTRUCTIONS





## Model: ACTON BLUETOOTH

- - This lightning flash with arrowhead symbol within an equilateral triangle is intended to alert the user to the presence of non-insulated “dangerous voltage” within the product’s enclosure that may be of sufficient magnitude to constitute a risk of electric shock.
  - - Warning: To reduce the risk of electric shock, do not remove cover (or back) as there are no user-serviceable parts inside. Refer servicing to qualified personnel.
  - - The exclamation point within an equilateral triangle is intended to alert the user to the presence of important operating and maintenance instructions in the literature accompanying the appliance.
1. Read these instructions – All the safety and operating instructions should be read before this product is operated.
  2. Keep these instructions – The safety and operating instructions should be retained for future reference.
  3. Heed all warnings – All warnings on the appliance and in the operating instructions should be adhered to.
  4. Follow all instructions – All operating and use instructions should be followed.
  5. Do not use this apparatus near water – The appliance should not be used near water or moisture – for example, in a wet basement or near a swimming pool, and the like.
  6. Clean only with dry cloth.
  7. Do not block any ventilation openings. Install in accordance with the manufacture’s instructions.
  8. Do not install near any heat sources such as radiators, heat registers, stoves, or other apparatus (including amplifiers) that produce heat.
  9. Do not defeat the safety purpose of the polarized or grounding plug. A polarized plug has two blades with one wider than the other. A grounding plug has two blades and a third grounding prong. The wide blade or the third prong is provided for your safety. If the provided plug does not fit into your outlet, consult an electrician for replacement of the obsolete outlet.
  10. Protect the power cord from being walked on or pinched particularly at the plugs, convenience receptacles, and at the point where they exit from the apparatus.
  11. Only use attachments/accessories specified by the manufacturer.
  12. Unplug the apparatus during lightning storms or when unused for long periods of time.
  13. Refer all servicing to qualified personnel. Servicing is required when the apparatus has been damaged in any way, such as power supply cord or plug is damaged, liquid has been spilled or objects have fallen into the apparatus has been exposed to rain or moisture, does not operate normally, or has been dropped.



This equipment is a Class II or double insulated electrical appliance. It has been designed in such a way that it does not require a safety connection to electrical earth.

# Marshall

## **Model: ACTON BLUETOOTH**

### **WARNING**

- To reduce the risk of fire or electric shock, do not expose this apparatus to rain or moisture. The apparatus shall not be exposed to dripping or splashing and that objects filled with liquids, such as vases, shall not be placed on apparatus.
- The mains plug is used as disconnect device, the disconnect device shall remain readily operable.

## **INSTALLATION & CONNECTION**

- Connect the product according to the instructions in the manual.
- Connect the product only to the correct mains voltage as shown on the equipment.
- Protect the power cord from being walked on or pinched particularly at plugs, convenience receptacles, and the point where they exit the apparatus.
- Use only power cables of the type specified in the operating instructions or as marked on the product.
- Do not defeat the safety purpose of the polarized or grounding-type plug. A polarized plug has two blades with one wider than the other. A grounding plug has two blades and a third grounding prong.
- The wide blade or the third prongs are provided for your safety. If the provided plug does not fit into your outlet, consult an electrician for replacement of the obsolete outlet.
- Unplug the product during lightning storms or when unused for long periods of time.

## **CLEANING & MAINTENANCE**

Refer all servicing to qualified service personnel. Servicing is required when the apparatus has been damaged in any way, such as power-supply cord or plug is damaged, liquid has been spilled or objects have fallen into the apparatus, the apparatus has been exposed to rain or moisture, does not operate normally, or has been dropped.

Clean only with dry cloth.

For more detailed cleaning and maintenance instructions, visit the website:

<http://www.marshallheadphones.com>

## **DISPOSAL & RECYCLING INFORMATION**

# Marshall

**Model: ACTON BLUETOOTH**



This appliance may not be treated as regular household waste. Management of WEEE (Waste Electrical and Electronic Equipment) is applicable in member states of the European Union and other European countries with individual national policies on the management of WEEE. If you need more information on the collection, reuse and recycling systems, please contact your local or regional waste administration facility.

## FCC & IC STATEMENT

### FCC STATEMENT

This device complies with part 15 of the FCC Rules. Operation is subject to the following two conditions: (1) This device may not cause harmful interference, and (2) this device must accept any interference received, including interference that may cause undesired operation.

This device must not be co-located or operating in conjunction with any other antenna or transmitter.

This equipment has been tested and found to comply with the limits for a Class B digital device, pursuant to part 15 of the FCC Rules. These limits are designed to provide reasonable protection against harmful interference in a residential installation. This equipment generates, uses and can radiate radio frequency energy and, if not installed and used in accordance with the instructions, may cause harmful interference to radio communications. However, there is no guarantee that interference will not occur in a particular installation. If this equipment does cause harmful interference to radio or television reception, which can be determined by turning the equipment off and on, the user is encouraged to try to correct the interference by one or more of the following measures:

- Reorient or relocate the receiving antenna.
- Increase the separation between the equipment and receiver.
- Connect the equipment into an outlet on a circuit different from that to which the receiver is connected.
- Consult the dealer or an experienced radio/TV technician for help.



## **Model: ACTON BLUETOOTH**

To comply with FCC' s and Industry Canada' s RF radiation exposure limits for general population/uncontrolled exposure, this device must be installed to provide a separation distance of at least 20cm from all persons.

*WARNING: Any changes or modifications to this unit not expressly approved by the party responsible for compliance could void the user's authority to operate the equipment.*

### **IC STATEMENT**

This device complies with Industry Canada license-exempt RSS standard(s). Operation is subject to the following two conditions: (1) this device may not cause interference, and (2) this device must accept any interference, including interference that may cause undesired operation of the device.

Le présent appareil est conforme aux CNR d'Industrie Canada applicables aux appareils radio exempts de licence. L'exploitation est autorisée aux deux conditions suivantes : (1) l'appareil ne doit pas produire de brouillage, et (2) l'utilisateur de l'appareil doit accepter tout brouillage radioélectrique subi, même si le brouillage est susceptible d'en compromettre le fonctionnement.

The device is compliance with RF field strength limits, users can obtain Canadian information on RF exposure and compliance.

Le présent appareil est conforme de ce matériel aux conformités ou aux limites d'intensité de champ RF, les utilisateurs peuvent sur l'exposition aux radiofréquences et la conformité d'acquérir les informations correspondante.

This Class B digital apparatus complies with Canadian ICES-003.

Cet appareil numérique de la classe B est conforme à la norme NMB-003 du Canada.  
CAN ICES-3 (B)/NMB-3(B)

*Marshall*

**Model: ACTON BLUETOOTH**

## **DECLARATION OF CONFORMITY**



For the declaration of conformity, visit this website: <http://www.marshallheadphones.com>

---

Zound Industries International AB, Centralplan 15 111 20 Stockholm Sweden  
Website: <http://www.marshallheadphones.com>

The user is recommended to visit the Website regularly for up-to-date information.