

Record Engine Serial Number

Engine serial number plate is located on right side under the open crankcase ventilation filter housing for 6.8 L engine (A) and on left side above starter for 9.0 L engine (B).

Fifth and sixth characters on the engine serial number plate designates engine displacement (C). Seventh character designates engine emission level (D).

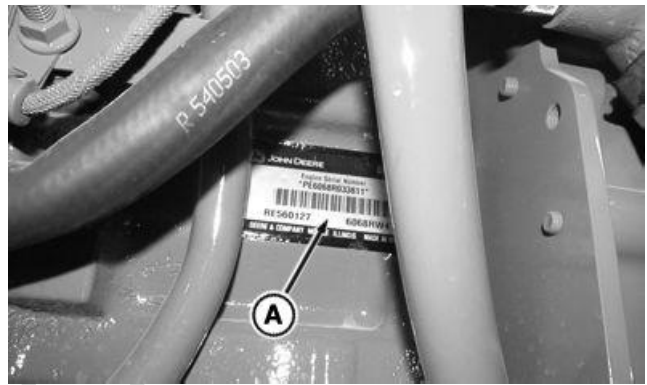
Seventh Character of Engine Serial Number	
U.S. EPA Final Tier 4 and EU Stage IV	U
U.S. EPA Tier II and EU Stage II	G

Fifth and Sixth Characters of Engine Serial Number	
6.8 L Engine	68
9.0 L Engine	90

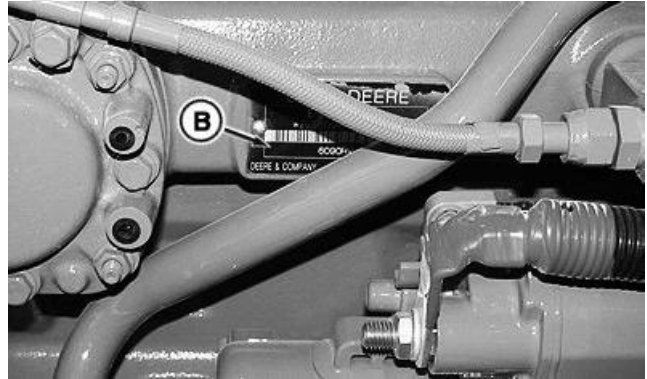
Serial Number

* _____ *

- A—6.8 L Engine Serial Number Location
- B—9.0 L Engine Serial Number Location
- C—Engine Displacement
- D—Engine Emission Tier Level



6.8 L Engine



9.0 L Engine



9.0 L Final Tier 4/EU Stage IV Engine

RW29387,0000663 -19-28AUG13-1/1

RXA0134232 —UN—29JUL13

RXA0134224 —UN—26JUL13

RXA0134418 —UN—02AUG13

ROOF

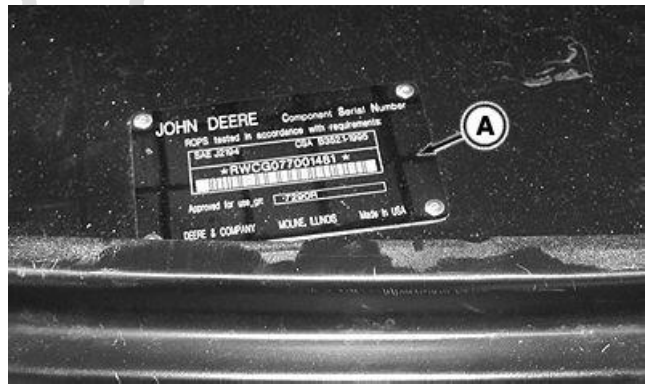
Record Cab Serial Number

Identification plate is located underneath flooring inside cab door.

Serial Number

* _____ *

A—Cab Serial Number



RXA0134222 —UN—26JUL13

RXA0134223 —UN—26JUL13

TO84419,000027D -19-26JUL13-1/1

Record MFWD Axle Serial Number

Identification number (A) is stamped on front-side of the MFWD axle housing.

Serial Number

* _____ *

A—MFWD Identification Number



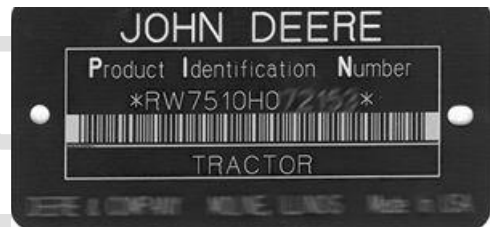
Record MFWD Serial Number

RXA0131709 —UN—28MAR13

TO84419,000027E -19-28MAR13-1/1

Keep Proof of Ownership

1. Maintain in a secure location an up-to-date inventory of all product and component serial numbers.
2. Regularly verify that identification plates have not been removed. Report any evidence of tampering to law enforcement agencies and order duplicate plates.
3. Other steps you can take:
 - Mark your machine with your own numbering system
 - Take color photographs from several angles of each machine

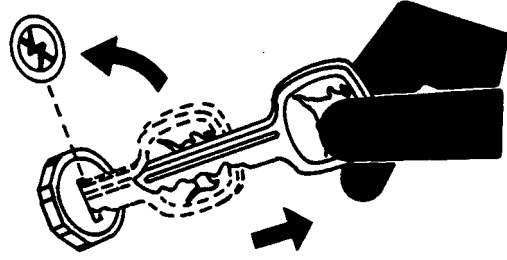


TS1680 —UN—09DEC03

DX,SECURE1 -19-18NOV03-1/1

Keep Machines Secure

1. Install vandal-proof devices.
2. When machine is in storage:
 - Lower equipment to the ground
 - Set wheels to widest position to make loading more difficult
 - Remove any keys and batteries
3. When parking indoors, put large equipment in front of exits and lock your storage buildings.
4. When parking outdoors, store in a well-lighted and fenced area.
5. Make note of suspicious activity and report any thefts immediately to law enforcement agencies.
6. Notify your John Deere dealer of any losses.



TS230—UN—24MAY89

DX,SECURE2 -19-18NOV03-1/1

PROOF

Lubrication and Maintenance Records

50 Hour Service Record

Complete all items on Daily/10 hour service interval list plus:

- Inspect tires

- Lubricate rear and front (If Equipped) hitch components (if used daily)

Hours					Hours				
Date					Date				
Hours					Hours				
Date					Date				
Hours					Hours				
Date					Date				
Hours					Hours				
Date					Date				

TO84419,0000281 -19-13FEB13-1/1

250 Hour Service Record

Complete all items on Daily/10 hour and 50 hour service interval lists plus:

- Check manual brakes
- Check neutral start system
- Check transmission PARK position
- Check swinging drawbar
- Lubricate MFWD or TLS™ Plus (If Equipped) axle kingpins, tie rod ends, axle pivot fittings, external fittings and U-joints

- Lubricate front hitch (If Equipped) and rear hitch components
- Check MFWD or TLS™ Plus (If Equipped) axle housing and wheel hub oil level
- Check front PTO housing oil level (If Equipped)

Hours					Hours				
Date					Date				
Hours					Hours				
Date					Date				
Hours					Hours				
Date					Date				
Hours					Hours				
Date					Date				

TLS is a trademark of Deere & Company

TO84419,0000282 -19-06SEP13-1/1

500 Hour Service Record

Complete all items on Daily/10 hour, 50 hour, and 250 hour service interval lists plus:

- Change engine oil and filter ¹
- Tighten wheel and wheel weight bolts
- Clean dual beam radar sensor
- Replace fuel filters
- Inspect engine air intake system
- Drain fuel tank sump
- Check MFWD and TLS™ Plus axle and wheel hub oil levels
- Lubricate MFWD or TLS™ Plus (If Equipped) axle kingpins, tie rod ends, axle pivot fittings, external fittings and U-joints
- Lubricate cab suspension system (If Equipped)
- Service optional severe duty water separator and filter element (If Equipped)

Hours					Hours				
Date					Date				
Hours					Hours				
Date					Date				
Hours					Hours				
Date					Date				
Hours					Hours				
Date					Date				

TLS is a trademark of Deere & Company

¹Engine oil and filter change interval can vary depending upon various factors. See Fuel, Lubricants and Coolant section of this Operator's Manual for further information.

TO84419,0000283 -19-13FEB13-1/1

1000 Hour Service Record

Complete all items on Daily/10 hour, 50 hour, 250 hour, and 500 hour service interval lists plus:

- Replace fuel tank vent filter
- Replace cab air and recirculation filters
- Clean MFWD axle breather
- Check cab suspension accumulator charge pressure (If Equipped)

Hours					Hours				
Date					Date				
Hours					Hours				
Date					Date				
Hours					Hours				
Date					Date				
Hours					Hours				
Date					Date				

TO84419,0000284 -19-06SEP13-1/1

Annual Service Record

- Service batteries and connections
- Test coolant and add coolant conditioner
- Inspect seat belts
- Replace cab fresh air and recirculation filters
- Inspect primary and secondary engine air filters
- Replace DEF Filter - Final Tier 4 and Stage IV engines only
- Replace trailer air brake dryer filter element (If Equipped)
- Check TLS™ Plus accumulator charge pressure (If Equipped)
- Check cab suspension accumulator charge pressure (If Equipped)

Hours					Hours				
Date					Date				
Hours					Hours				
Date					Date				
Hours					Hours				
Date					Date				
Hours					Hours				
Date					Date				

TLS is a trademark of Deere & Company

TO84419,0000285 -19-06SEP13-1/1

1500 Hour Service Record

Complete all items on Daily/10 hour, 50 hour, 250 hour, and 500 hour service interval lists plus:

- Change transmission/hydraulic oil and filters
- Change MFWD or TLS™ Plus (If Equipped) wheel hub and axle housing oil
- Clean hydraulic system sump screen
- Lubricate draft link support shaft bushing
- Inspect fan belt tensioner
- Change front PTO housing oil and filter (If Equipped)
- Replace open crankcase ventilation filter (6.8 L Engine Only)

Hours					Hours				
Date					Date				
Hours					Hours				
Date					Date				
Hours					Hours				
Date					Date				
Hours					Hours				
Date					Date				

TLS is a trademark of Deere & Company

TO84419,0000286 -19-13FEB13-1/1

2000 Hour Service Record

Complete all items on Daily/10 hour, 50 hour, 250 hour, 500 hour and 1000 hour service interval lists plus:

- Adjust engine valve clearance - Tier 2 and Stage II engines

Hours					Hours				
Date					Date				
Hours					Hours				
Date					Date				
Hours					Hours				
Date					Date				
Hours					Hours				
Date					Date				

TO84419,0000287 -19-27NOV12-1/1

3000 Hour Service Record

Complete all items on Daily/10 hour, 50 hour, 250 hour, 500 hour, and 1500 hour service interval lists plus:

- Adjust engine valve clearance

Hours					Hours				
Date					Date				
Hours					Hours				
Date					Date				
Hours					Hours				
Date					Date				
Hours					Hours				
Date					Date				

TO84419,000009A -19-06SEP13-1/1

4500 Hour Service Record

Complete all items on Daily/10 hour, 50 hour, 250 hour, 500 hour, and 1500 hour service interval lists plus:

- Replace transmission drive shaft damper

Hours					Hours				
Date					Date				
Hours					Hours				
Date					Date				
Hours					Hours				
Date					Date				
Hours					Hours				
Date					Date				

TO84419,0000289 -19-27NOV12-1/1

5000 Hour Service Record

Complete all items on Daily/10 hour, 50 hour, 250 hour, 500 hour, 1000 hour, and 2500 hour service interval lists plus:

- Replace engine crankshaft damper

Hours					Hours				
Date					Date				
Hours					Hours				
Date					Date				
Hours					Hours				
Date					Date				
Hours					Hours				
Date					Date				

TO84419,000028A -19-06SEP13-1/1

6000 Hour Service Record

Complete all items on Daily/10 hour, 50 hour, 250 hour, 500 hour, 1000 hour, 1500 hour, 2000 hour and 3000 hour service interval lists plus:

- Drain, flush, and refill engine cooling system
- Replace cooling system radiator cap

Hours					Hours				
Date					Date				
Hours					Hours				
Date					Date				
Hours					Hours				
Date					Date				
Hours					Hours				
Date					Date				

TO84419,000028B -19-06SEP13-1/1

PROOF

Glossary

Glossary of Terms

Accessory	ACC	Secondary electrical system
ActiveCommand Steering (ACS™)	ACS	Abbreviation
ActiveSeat™ Control Unit	ASU	Abbreviation
Air Conditioning	A/C	System used for conditioning the air in the cab
Air Quality System	AQS	System used to control conditioned air in the cab
Alternating Current	AC	Electrical current that reverses its direction at regularly recurring intervals
Armrest Interface Control Unit	AIC	Abbreviation
Automatic Temperature Control Unit	ATC	Abbreviation
AutoQuad™ PLUS Transmission	AQ+	Partial power-shiftable transmission
AutoQuad™ PLUS Transmission Control Unit	PTQ	Abbreviation
AutoQuad™ PLUS Transmission Shift Control Unit	TIQ	Abbreviation
Brake Control Unit	BRC	Abbreviation
Cab Load Center Control Unit	CLC	Abbreviation
Cab Suspension Control Unit	CSC	Abbreviation
Cab Switch Module	CSM	Abbreviation
Chassis Control Unit	CCU	Abbreviation
Circulator Motor Speed	O	Medium Speed
Circulator Motor Speed	++	Fastest Speed
Cold Cranking Amperes	CCA	Refers to a battery's capability to perform during cold-weather operation
CommandCenter™	GS3	Computerized system for tractor monitoring
CommandQuad™ Transmission Control Unit	PTQ	Abbreviation
CommandQuad™ Transmission Shift Control Unit	TIQ	Abbreviation
Component Technical Manual	CTM	Technical manual developed for the servicing of major components
Corner Post Display	PDU	Abbreviation
Diagnostic Technical Manual	DTM	Technical manual developed for diagnosing problems
Diagnostic Trouble Codes	DTC	Codes that inform the operator of stop, service, or information alerts
Diesel Particulate Filter	DPF	Filter that prevents ash and soot from entering the atmosphere
Direct Current	DC	Electrical current flowing in one direction only
Electro-Hydraulic	EH	Refers to a hydraulic valve function that is controlled electrically
Electro-Hydraulic Depth Control	EHDC	Abbreviation
Electro-Hydraulic Selective Control Valve	EH SCV	Selective control valve operated with electrical solenoids
Electronics	ELX	Abbreviation
Engine Control Unit	ECU	Abbreviation
Engine Interface Control Unit	EIC	Abbreviation
Forward Set Speed	FSS	Speed control for Infinitely Variable Transmission
Front Chassis Control Unit	FCC	Abbreviation
Front PTO Control Unit	PTF	Abbreviation
Gallons per Minute	gpm	Fluid flow measured over a period of 1 minute
Global Positioning System	gps	Abbreviation
Heating Ventilating Air Conditioning	HVAC	Abbreviation
Heavy Duty	HD	Abbreviation
Hitch Control unit	HCC	Abbreviation
High Intensity Discharge	HID	Type of Xenon working light used for front lighting
Hitch Slip Command	HSC	Computerized system used to supplement hitch draft control
Hitch Valve Control Unit	HV1	Abbreviation
Ignition	IGN	Control for starting and stopping the tractor
Infinitely Variable Transmission	IVT	Abbreviation

Continued on next page

TO84419,000028C -19-26MAR13-1/2

Glossary

Intelligent Total Equipment Control	iTEC	Abbreviation
International Standards Organization	ISO	Abbreviation
IVT™/AutoPowr™ Transmission Control Unit	PTI	Abbreviation
IVT™/AutoPowr™ Transmission Shift Control Unit	TII	Abbreviation
JDLINK™ Control Unit	JDL	Abbreviation
Light Emitting Diode	LED	Abbreviation
Liters per Minute	L/min	Fluid flow measured over a period of 1 minute
Mechanical Front Wheel Drive	MFWD	Powered front axle which is driven mechanically from the transmission
Operator Interface Control Unit	OIC	Abbreviation
Operators Manual	OM	Technical manual developed for operating a machine
Power Assisted PTO Shifting	PAPTOS	Electronic Rear PTO Shifting
Power Take-Off	PTO	Abbreviation
PowrQuad™ PLUS Transmission	PQ+	Partial power-shiftable transmission
PowrQuad™ PLUS Transmission Control Unit	PTQ	Abbreviation
PowrQuad™ PLUS Transmission Shift Control Unit	TIQ	Abbreviation
Pressure Control Valve	PCV	Valve used to control pressure within a system
Product Identification Number	PIN	Serial number relating to tractor identification
Radio Frequency Identification	RFID	Abbreviation
Rear PTO Control Unit	RPT	Abbreviation
Revolutions per Minute	rpm	Abbreviation
Roll-Over Protective Structure	ROPS	Abbreviation
Roof Lighting Control Unit	RLC	Abbreviation
SCV Control Unit	SCC	Abbreviation
Secondary Hydraulic Control Unit	SCO	Abbreviation
Selective Control Valve	SCV	Device used to control remote hydraulic functions
Selective Control Valve Units	SV	Abbreviation
Sequence Control Unit	SMV	Abbreviation
Slow Moving Vehicle	SMV	Warning sign on the rear of the tractor
StarFire Control Unit	ITC	Abbreviation
Steering System Control Unit	XMA, XMB, XSA, XSB	Abbreviation
Steering System Control Unit	XMC, XSC	Abbreviation
Suspended Front Axle Control Unit	SFA	Abbreviation
Tractor Equipment Control Unit	TEC	Abbreviation
Tractor Equipment Interface Control Unit	TEI	Abbreviation
Tractor Implement Automation	TIA	Automated processes for tractors and implements.
Triple Link Suspension	TLS	Suspended front axle
Vehicle Load Center Control Unit	VLC	Abbreviation
Virtual Terminal Implement Control Unit	VTI	Abbreviation
Water-In-Fuel	WIF	Abbreviation

TO84419,000028C -19-26MAR13-2/2

Index

	Page		Page
A			
Acceleration Aggressiveness	41-8	Loader	
ActiveSeat	25-3	Rear Ballast For Front Loader	75-16
Aftertreatment indicators overview	15-2	Maximum load per wheel	75-14
Aiming Headlights	160-12	Quik-Tatch Weights	75-14
Air Conditioning		Rear Wheel Weights	75-15, 120-7
Checking	103-6	Semi-integral implements	75-5
Condenser		Tire weight charts	75-11
Clean	103-4	Towed draft implements	75-5
Air Trailer Brakes		Towed trailers, slurry tanks, and fertilizer tanks	75-5
Bleeding	103-13	Tractor weight charts	75-9
Annual		Types	75-3
Checking seat belts	130-4	Wheel Slip	75-20
Applications		Battery	
File Manager	16-23	Charging	30-14
Implement Profiles	16-36	Connections	
Machine Profiles	16-35	Servicing	130-2
StarFire Receiver	16-43	Servicing	130-2
Auto exhaust		Warranty	180-21
Engine		Battery disconnect	30-6
Exhaust filter cleaning	30-3	Battery Handling, Safety	
Automation status		Safety, Battery Handling	05-15, 130-1
CommandCenter™	16-7	Belt	
AutoTrac Assisted Steering System	25-17	Fan	135-9
AutoTrac™ Assisted Steering System	40-14	Belt tensioner	
Auxiliary Controls	16-40	Inspecting	135-9
Auxiliary heaters, using	30-13	BioDiesel fuel	90-5
Auxiliary power strip and electrical outlets	25-11	Bolt and screw torque values	
Avoid contact with agricultural chemicals	25-1	Metric	180-13
Avoid static electricity risk when		Unified inch	180-14
fueling	05-4, 90-3	Brake pedals, individual	
Axle		Using	45-12
MFWD		Brakes	
Lubricating	105-3, 120-5, 120-6	Manual	
B			
Ballast		Checking	115-2
Controlling Power Hop	75-8	Trailer	
Determining ballasted		Air	40-18
Required tire inflation pressures	75-7	Bleeding	103-13
Tractor axle loads	75-7	Hydraulic	40-17
Tractor weight	75-7	Bleeding	103-12
Tractor weight split	75-7	Using	40-16
Guidelines		Break-in checks	92-1
General Weight Split	75-2	Break-in engine oil	
Tractors with Single Tires	75-1	Interim tier 4, final tier 4, stage IIIB, and	
Weight Based on Engine Horsepower	75-1	stage IV	90-12
Hitch Mounted Implements	75-16	Business Band and Antenna	
Implement Codes	75-19	Installing	25-10
Integral implements	75-5	C	
Liquid ballast		Cab Air Filters	
Using	75-17	Inspecting or replacing	125-2
Liquid Ballast		Cab Roof Light Bulbs (Front, Side And Rear)	
Charts	75-18	Replacing	160-13
		Cab Suspension	
		Accumulator Charge Pressure	125-4, 130-7
		Changing to a different size tire	
		Tire	40-4

Continued on next page

	Page		Page
Check		iTEC	
Wheel and wheel weight bolt torque	120-6	Abort Conditions	47-3
Checking		Cancel Conditions	47-3
Seat Belts	130-4	CommandCenter Functions	47-2
Cleaning Fuel Tank Vent Filter	135-14	Control functions	47-1
Cold weather starting	30-7	Executing Programmed Sequence	47-9
Auxiliary heaters, using	30-13	Inhibit Conditions	47-3
Starting Engine		Interrupt Conditions	47-3
With starting aid	30-11	IVT/AutoPowr	
ComfortCommand™ with HCS		AutoClutch Sensitivity	40-15, 45-9
cab suspension	25-4	Custom Settings	45-7
CommandARM		Modes	45-6
Position, adjusting	25-6	Reverse-Forward Set Speed Ratio	45-8
CommandARM™		Setting maximum speed	45-6
Hitch controls	15-6	Language	16-16
House controls	15-7	Menu	16-7
Left side controls	15-8	Performance Monitor	
Multi-function lever	15-6	Using	16-36
PTO controls	15-7	Phone	
SCV controls	15-7	Operating	17-6
CommandARM with generation 4 display		Phone Book	17-7, 17-8
Controls	15-5	Settings	17-9
CommandCenter	25-8	Remote Software Updates	16-23
Access Manager	16-30	SCV Controls	
Access Manager - setting owner/operator	16-30	Access Settings	60-1
Access Manager password	16-30	Configuring	60-1, 60-2, 60-4, 60-5
Activating the System	16-11	Feature Mode	60-5
Auxiliary Controls	16-40	Independent Mode	60-4
Basic diagnostics readings	16-25	Standard Mode	60-2
Cab lighting	16-12	Service ADVISOR Remote	16-23
Cab Suspension	40-11	Shortcut Buttons	16-11
Camera	16-44, 16-45	Time, setting	16-14
Remote Viewer	16-46	TLS suspension	40-11
CommandQuad		Top Region	16-18
Downhill Operation in Slippery Conditions	41-9	Units	16-16
Tractor Speed Display	41-9	Video display capability	16-45
Transmission Main Page	41-5	Video Display Capability	16-44
Configurable lights	20-2	Video Display Settings	16-46
Connecting multiple ISO displays	16-19	CommandCenter™	16-38
Delayed egress lighting	20-4	Compressed air	160-6
Display Models	16-1	Configuring Tractor	
Distance Counter	16-37	GPS	25-13
Engine		Radar	25-13
Exhaust filter overview	30-1	Connecting compatible electronic equipment	25-12
Parked exhaust filter cleaning	30-4	Connecting Multiple Displays	16-19
FieldCruise	40-8	Connections	
Hitch		GreenStar	25-15
Controls and switches	65-1	Controls	
Drop Rate	65-7, 65-19	Brake pedals	15-1
Float Operation	65-9	Clutch pedal	15-1
Load/Depth Control	65-4	Console, front	15-1
Raise Rate	65-8, 65-20	Foot operated speed control	15-9
Slip Response	65-8	Key switch	15-1
Upper Set Limit	65-6	Left-hand reverser	15-1
Important path to pages	40-3	Lighting selection	15-1
Input fields	16-17	Steering column tilt	15-1
Intelligent power management	40-9	Steering wheel telescope release	15-1
		Steering wheel tilt release	15-1

Continued on next page

	Page		Page
Turn signals	15-1	PTQ - CommandQuad Control Unit	170-23
Windshield wiper selection.....	15-1	RLC - Roof Lighting Control Unit	170-24
Coolant		RPT - Rear PTO Control Unit	170-25
Diesel engine	90-17	SCC - SCV Control Unit.....	170-26
Disposing	90-19	SCO - Secondary Hydraulic Control Unit.....	170-27
John deere COOL-GARD II coolant extender.....	90-20	SFA - Suspended Front Axle Control Unit	170-28
Testing.....	125-3, 130-3	SMV - Sequence Control Unit.....	170-28
Testing freeze point.....	90-19	SV - Selective Control Valve Units	170-29
Warm temperature climates	90-18	TEC - Tractor Equipment Control Unit	170-31
Coolers		TEI - Tractor Equipment Interface Control Unit.....	170-31, 170-33
Clean.....	103-4	TII - IVT™/AutoPowr™ Transmission Shift Control Unit.....	170-32
Cooling system		TIQ - PowrQuad™ PLUS, Com- mandQuad™, and AutoQuad™ PLUS Transmission Shift Control Unit.....	170-34
Check level	100-3	VLC - Vehicle Load Center Control Unit	170-34
Draining, flushing, and refilling		VTI - Virtual Terminal Implement Control Unit.....	170-35
6.8 L engine.....	150-1	XMA - Steering System Control Unit.....	170-36
9.0 L engine.....	150-1	XMB - Steering System Control Unit.....	170-36
Weep hole.....	103-9	XMC - Steering System Control Unit	170-38
Corner Post Display.....	15-3	XSA - Steering System Control Unit	170-36
Corner post display (Primary Display Unit)		XSB - Steering System Control Unit	170-36
Information indicator	15-1	XSC - Steering System Control Unit.....	170-38
Service alert indicator	15-1	Diagnostics Center	16-25
Stop indicator.....	15-1	Diesel Exhaust Fluid (DEF)	90-9
Courtesy Light		Diesel fuel.....	90-1
Replacing bulb	160-16	Diesel fuel, testing	
		Testing Diesel Fuel.....	90-6
D		Differential lock.....	40-12
DEF		Dimensions	180-8
Dosing unit filter, changing	145-3	Implement	16-36
Tank, cleaning	103-14	Machine	16-35
DEF dosing unit filter		Disconnect battery	
Changing.....	145-3	Battery.....	40-3
DEF Filter Replacement	135-15	Disconnecting Battery	
DEF tank		Purging DEF Lines	
Cleaning.....	103-14	DEF, Purging Lines.....	160-1
Diagnostic trouble codes		Disposal of diesel exhaust fluid (DEF).....	90-12
PTI - e23™ transmission control unit.....	170-22	Disposal, Exhaust Filter.....	155-4
Diagnostic Trouble Codes		Dome light bulb	
Accessing.....	170-2	Replacing	160-15
AIC - Armrest Interface Control Unit	170-3	Drawbar	
ASU - ActiveSeat Control Unit	170-4	Adjusting length, height, side to side	70-3
ATC - Automatic Temperature Control Unit.....	170-5	Checking for Wear	115-5
BRC - Brake Control Unit.....	170-5	Clevis Assembly	
CCU - Chassis Control Unit	170-6	Cat 3 Drawbar	70-4
CLC - Cab Load Center	170-7	High Vertical Load Drawbar Support.....	70-5
CSC - Cab Suspension Control Unit.....	170-8	Load limitations	70-2
CSM - Cab Switch Module	170-9	Dual Beam Radar	
ECU - Engine Control Unit	170-10	Checking	120-11
EIC - Engine Interface Control Unit.....	170-15		
FCC - Front Chassis Control Unit	170-15	E	
HCC - Hitch Control Unit.....	170-16	e23™ Transmission	
HV1 - Hitch Valve	170-16	Setting forward and reverse startup gears	44-6, 44-7
ITC - StarFire Control Unit	170-17		
JDL - JDLink	170-17		
OIC - Operator Interface Control Unit	170-18		
PDU - Primary Display Unit.....	170-18		
PTF - Front PTO Control Unit	170-19		
PTI - IVT™/AutoPowr™ Control Unit.....	170-20		

Continued on next page

	Page		Page
Effect of Cold Weather on Diesel Engines		Exhaust Filter	
Diesel Engines, Cold Weather Effect	90-7	Ash Handling and Disposal.....	155-4
Efficiency Manager™ on e23™ Transmission.....	44-8	Exhaust Filter Ash Handling and Disposal	
Efficiency Manager™ on e23™		Diesel Particulate Filter Ash Handling and	
Transmission in Manual Mode.....	44-9	Disposal	155-4
Electrical rear-view mirror		Exhaust Filter Disposal.....	155-4
Rear-view mirror		Exhaust Filter, Safety	
Mirror remote rear view	25-19	Safety, Exhaust Filter	05-18
Electrical system		External Audio Sources	
Introduction	160-1	Premium radio.....	17-2
Electrical System			
Troubleshooting	165-10	F	
Emergency Exit	40-3	Fan belt	
Engine		Replacing	103-7
Air Filter Precleaner	103-1	Fender	
Air Intake		Front	
Inspecting		Deluxe Pivoting Fenders	80-16
6.8 L engine	120-13	FieldCruise	40-8
9.0 L engine	120-15	File Manager.....	16-23
Auxiliary heater, using.....	30-13	Filling DEF Tank	
Check Engine Compartment.....	103-5	Draining DEF Tank	
Cold weather starting		DEF Tank	
6.8 L engines.....	30-9	Tank, DEF	90-8
9.0 L engines.....	30-10	Filters	
9L engine		Cab air	
With starting aid	30-11	Inspecting or replacing	125-2
Emissions certification	30-6	Cab recirculation	
Exhaust filter overview	30-1	Replacing	125-1, 130-4
Low fuel indicator		Engine	
Low diesel exhaust fluid indicator.....	30-12	6.8 L	120-1
Oil		9.0 L	120-3
Changing		Air	
6.8 L.....	120-1	Checking.....	130-5
9.0 L.....	120-3	Replace.....	100-1
Check	105-1	Exhaust filter	
Operating	30-6, 30-7	Maintenance and service.....	155-4
Parked exhaust filter cleaning.....	30-4	Front PTO	135-12
Reduce Fuel Consumption	30-13	Fuel	
Replace Diesel Particulate Filter (DPF)	100-3	Replacing	120-12
Restarting when Out of Fuel	30-12	Open Crankcase Ventilation	135-13
Starting fluid can, changing.....	30-12	Replace Diesel Particulate Filter (DPF)	100-3
Stopping.....	30-8	Filters, Oil	
Troubleshooting	165-1	Oil Filters.....	90-16
Engine coolant		Foot Throttle	15-9
Disposing of.....	90-19	Forward/Reverse Startup Gear	
Engine oil.....	90-13	Reverse/Forward Ratio	
Break-In		Back Up Alarm	41-8
Interim tier 4, final tier 4, stage IIIB, and		Front grille lights	
stage IV	90-12	Adjusting	160-11
Engine oil and filter service intervals	90-14, 90-16	Fuel	
Engine Valve Clearance		BioDiesel.....	90-5
2000 hour service	140-1	Diesel.....	90-1
3000 hour service	142-1	Filters	
Examples load-sensing hydraulic system		Replacing	120-12
Power-beyond.....	63-8	Handling and Storing	90-2
Exchanging tire sizes.....	80-3, 81-3	Lubricity.....	90-2
Exhaust filter			
Maintenance and service	155-4		

Continued on next page

	Page		Page
Optional Water Separator		Drop Rate.....	65-7, 65-19
Back Flushing.....	120-18	External raise and lower switches.....	65-10
System.....	30-6	External Raise/Lower Switches	15-9
Tank	90-4	Float Operation	65-9
Tank sump		Front	
Draining.....	135-14	Lubricating.....	110-1
Fuel Filters		Using	65-18
Filters, Fuel	90-6	Lateral Float.....	65-15
Fuel system		Lift Links.....	65-15
Bleeding	155-5	Load/Depth Control.....	65-4
Do not modify.....	155-5	Manual Lowering.....	65-11
Do not open	155-5	Quick Coupler	
Fuses		Detaching Implement	65-16
Location	160-2	Raise Rate	65-8, 65-20
		Rear	
G		Lubricating.....	110-1, 115-1
Gauges.....	15-5	Slip Response.....	65-8
Gear Oil		Troubleshooting	165-6
Oil, Gear.....	90-21	Upper Set Limit	65-6
Generation 4 Display		Hitch conversion.....	65-17
Operating System	16-3	Horn, operating.....	25-7
Glossary	195-1	HVAC	
GPS		Heating	
Configuring Tractor	25-13	Ventilation	
GPS Receiver.....	16-43	Air Conditioning	25-8
Grease.....	90-22	Hydraulic	
GreenStar System		Connections	
Connections.....	25-15	Hitch auxiliary raise kit.....	63-6
Ground Speed	15-4	Implement.....	63-5
Ground speeds		Load-Sensing Hydraulic System	63-7
IVT/AutoPowr.....	180-12	Motor Case Drain	63-6
		Motor Return	63-6
H		Examples	
Halogen light bulbs		Auxiliary Motor Return.....	63-11
Handling.....	160-9	Hitch Cylinders Controlled by SCV in	
Handling		Parallel with Hitch Auxiliary Raise	63-14
Halogen light bulbs	160-9	Integral Planter with Hitch Auxiliary	
Hardware torque values		Raise Operated in Parallel with Hitch Valve	63-13
Metric	180-13	Integral Planter with Hitch Auxiliary Raise	63-14
Unified inch	180-14	Motor Application Using Power Beyond	63-10
Headlights		Motor Application Using SCV Retract	63-11
Aiming.....	160-12	Motor Case Drain	63-10
High/low beam, operating.....	20-5	Planter with Vacuum Motor	63-12
High-pressure washers.....	155-3, 160-7	Pressure Control Valve Applications	63-9
Hitch		Return Line to SCV Using Motor Return Tip	63-12
Center link		Hoses	
Hydraulic	65-12	Connecting, Mid-Mount	63-3
Center Link.....	65-15	Connecting, Rear	63-1
Using Correct Position.....	65-11	Disconnecting, Mid-Mount.....	63-3
Command lever.....	65-3	Disconnecting, Rear	63-2
Components.....	65-9	Implements Requiring Large Volumes of Oil.....	63-8
Controls and switches.....	65-1	Oil	
Draft control	65-5	Changing	135-2
Draft link support shaft bushing		Level, Checking.....	105-2
Lubricating.....	135-8	SCV controls	
		Troubleshooting.....	165-8
		SCV Controls	
		Access Settings.....	60-1

Continued on next page

	Page		Page
Activating Independent Mode.....	60-3	IVT/AutoPower	
Configuring.....	60-1, 60-2, 60-4, 60-5	Creep mode, using.....	45-10
Feature Mode.....	60-5	Operating.....	45-3
Independent Mode.....	60-4	Putting tractor in motion.....	45-10
Joystick.....	60-13	Set speeds, guidelines and examples.....	45-5
Operator Presence Sensor.....	60-12	Stopping tractor.....	45-13
SCV Control Levers			
Using.....	60-9	J	
SCV Lever Positions		Jacking up the tractor	
Neutral.....	60-10	(2010-52-EU).....	155-1
Standard Mode.....	60-2	Joystick.....	60-13
Total Flow Demand.....	60-8		
Troubleshooting.....	165-5	K	
Warm-up.....	40-5	Keep window and door closed.....	40-2
Hydraulic option connector harness.....	60-16		
Hydraulic system		L	
TouchSet controls		Layout manager page	
SCV Lever positions		Edit run page.....	16-32
Extend.....	60-10	Lifting points for jacking up.....	155-1
Extend detent.....	60-10	Lights	
Float.....	60-12	7-pin outlet.....	20-9
Retract.....	60-11	Adjusting front grille lights.....	160-11
Retract detent.....	60-11	Aiming headlights.....	160-12
		Brake light bulb	
I		Replacing.....	160-14
Implement Codes.....	75-19	Cab lighting.....	16-12
Implement Profiles.....	16-36	Configurable lights.....	20-2
Indicators		Delayed egress lighting.....	20-4
Digital.....	15-4	Extremity warning lights.....	20-7
Information.....	170-1	Replacing.....	160-18
Service alert.....	170-1	Front grille flood light bulbs	
STOP.....	170-1	Replacing.....	160-9, 160-10
Indicators overview.....	15-2	Hazard lights.....	20-7
Information indicators.....	15-1	Light identification.....	20-1
Inspecting		Replacing cab roof front, side and rear	
Or replacing cab air filters.....	125-2	light bulbs.....	160-13
Or replacing recirculation filter.....	125-1, 130-4	Replacing dome light bulb.....	160-15
Instructional seat.....	25-5	Right region softkeys.....	20-3, 20-6
Intelligent power management.....	40-9	Rotary beacon light.....	20-8
Intelligent Total Equipment Control (ITEC)		Safety lights and devices.....	20-6
Abort Conditions.....	47-3	Load center fuses.....	160-2
Cancel Conditions.....	47-3	Low fuel indicator	
Clearing sequence.....	47-10	Low DEF indicator.....	30-12
CommandCenter Description.....	47-2	Lubricant	
Executing a programmed sequence.....	47-9	Mixing.....	90-22
Inhibit Conditions.....	47-3	Lubricant Storage	
Interrupt Conditions.....	47-3	Storage, Lubricant.....	90-23
iTEC functions for IVT/AutoPower.....	47-10	Lubricants, Safety	
Manually programming a sequence while		Safety, Lubricants.....	90-22
stationary.....	47-8	Lubricating	
Intelligent Total Equipment Control (ITEC™)		Axle Pivot.....	105-3, 120-5
CommandARM™ control functions.....	47-1	Draft link support shaft bushing.....	135-8
Introduction to		Front Hitch.....	110-1, 115-2
Electrical system.....	160-1	MFWD Kingpins.....	105-3, 120-5
ISO			
ISO 11783.....	16-42		
ISOBUS.....	16-42		

Continued on next page

	Page		Page
Panhard Rod.....	105-3, 120-5	Changing	
Rear hitch.....	110-1, 115-1	6.8 L.....	120-1
Steering Cylinder	105-3, 120-5	9.0 L.....	120-3
Tie Rod Ends	105-3, 120-5	Front PTO	
U-Joints.....	120-6	Changing oil	135-12
Lubrication and maintenance		Checking Level.....	115-5, 115-6
4500 hours/36 months		Hydraulic	
Changing DEF dosing unit filter.....	145-3	Changing oil	135-2
As required		Checking Level.....	105-2
Cleaning DEF tank	103-14	MFWD	
Lubricity of diesel fuel.....	90-2	Axle housing	
		Changing oil.....	135-7
M		Axle Housing	
Machine communications radio antenna		Checking Level	103-10
Install MCR antenna	25-16	Wheel hub	
Machine Profile.....	16-34, 16-35	Changing oil.....	135-6
Machine Profiles.....	16-35	Wheel Hub	
Maintenance		Checking Level	103-11
Calibrations	16-38	Transmission	
Optional Fuel Water Separator (if equipped)	120-19	Changing oil	135-2
Maintenance intervals.....	95-2	Checking Level.....	105-2
Manual Rear View Mirror		Weep hole.....	103-9
Rear view mirror.....	25-18	Operating System	
Map Light		Applications.....	16-3
Replacing bulb.....	160-17	Operator Presence Sensor.....	60-12
Master fuses.....	160-5	Optional Fuel Water Separator	
Mechanical fornt-wheel drive		Back Flushing	120-18
MFWD.....	40-13	Maintenance	120-19
Metric bolt and screw torque values	180-13		
MFWD		P	
Axle housing		Paint care	175-3
Changing oil	135-7	Park brake	
Axle Housing		Releasing	85-5
Oil Level	103-10	Premium Radio	
Wheel hub		External Audio Sources	17-2
Changing oil	135-6	Using iPod	17-1
Wheel Hub		Product identification	185-1
Oil Level	103-11	PTO	
Mirror		Changing Stub Shaft.....	70-16
Side (Rear View).....	25-18, 25-19	Engagement rate	70-9
Mixing lubricants.....	90-22	Engine Speed	70-8
Monitor Bracket Mounts.....	25-18	External front switch.....	70-12
Multi Range	41-8	External rear switch	70-13
		External Switch	15-9
N		Front	
Navigating gen 4 commandcenter.....	16-10	Changing oil	135-12
		Checking Oil Level	115-5, 115-6
O		Operating front.....	70-10
Offsets		Operating rear.....	70-11
Implement.....	16-36	PTO-Driven Implement	70-6, 70-7
Machine	16-35	Shield	
Oil		Type 3 PTO	70-7
Engine.....	90-13	Shiftable PTO.....	70-14, 70-15

Continued on next page

	Page		Page
Q			
Quick coupler.....	65-14	Safety, Tightening Wheel Retaining Bolts/Nuts	
Quik-Tatch Weights	75-14	Tightening Wheel Retaining Bolts/Nuts	05-22
R			
Radar		Safety, Transport at Safe Speeds	
Configuring Tractor	25-13	Transport Towed Equipment at Safe Speeds	05-11
Radiator		Safety, Use Caution on Slopes and Uneven Terrain	
Clean.....	103-4	Use Caution on Slopes and Uneven Terrain.....	05-12
Radio		SCR	
Premium radio		System overview.....	30-2
CommandCenter		Seat	
AM/FM home page	17-3	ActiveSeat.....	25-3
Auxiliary home page	17-6	ComfortCommand Seat	25-2
Bluetooth® home page	17-5	Operator Presence Sensor	25-5
CD home page.....	17-4	Seat Belts	
Source Select	17-3	Checking	130-4
USB home page	17-5	Seat belts, using	40-2
XM home page	17-4	Selective catalyst reduction	
Radio, Premium		SCR system.....	30-5
Troubleshooting	165-13	Serial numbers	185-1
Using External Audio Sources	17-2	Service.....	100-1, 103-1, 110-1, 115-1, 120-1, 125-1, 135-1, 140-1, 145-1, 150-1
Recirculation Air Filter		1000 hours	
Inspecting or replacing.....	125-1, 130-4	Cleaning fuel tank vent filter	135-14
Refilling Diesel Exhaust Fluid Tank	90-11	Inspecting cab air filters.....	125-2
Refrigerator or Storage Space.....	25-20	Inspecting recirculation filter.....	125-1, 130-4
Refueling, avoid static electricity risk.....	05-4, 90-3	2000 hours	
Replace engine crankshaft damper.....	148-1	Check engine valve clearance	140-1
Replace Transmission Drive Shaft Damper	145-1	3000 hours	
Replacing		Check engine valve clearance	142-1
Courtesy light bulb	160-16	4500 hours	
Dome light bulb.....	160-15	Replacing transmission drive shaft damper	145-1
Map light bulb.....	160-17	4500 hours/36 months	
Restarting when Out of Fuel.....	30-12	Changing DEF dosing unit filter.....	145-3
Running engine		500 hours	
Engine.....	30-8	Check wheel and weight bolt torque	120-6
S			
Safety		5000 hours	
Handling Halogen light bulbs	160-9	Replacing engine crankshaft damper.....	148-1
Safety chain.....	85-3	Annual	
Safety, Avoid High-Pressure Fluids		Checking seat belts	130-4
Avoid High-Pressure Fluids	05-22	As required	
Safety, Fire Prevention		Cleaning DEF tank	103-14
Fire Prevention.....	05-3	Implement power relay module.....	160-8
Safety, Forestry Operations		Service ADVISOR Remote	16-23
Limited Use in Forestry Operation	05-9	Service alert indicator	15-1
Safety, Handle Fuel Safely, Avoid Fires		Service intervals	95-2
Avoid Fires, Handle Fuel Safely.....	05-3	Service Intervals	95-1
Safety, ROPS		Service records	
ROPS, Keep Installed Properly.....	05-5	1000 Hours	190-2
Safety, Steps and Handholds		1500 Hours	190-3
Use Steps and Handholds Correctly.....	05-6	2000 Hours	190-3
		250 Hours	190-1
		4500 Hours	190-4
		50 Hours	190-1
		500 Hours	190-2
		5000 Hours	190-4
		6000 Hours	190-5
		Annual.....	190-3

Continued on next page

	Page		Page
Servicing and Connecting Snap to Connect Fittings..	155-3	Towed equipment, transport at safe speeds.....	05-11
Set Speed.....	15-4	Towing	
Snap to Connect Fitting (STC)		Loads.....	85-2
STC.....	155-3	Towing tractor	
Softshift.....	41-8	Releasing park brake.....	85-5
Software Packages		Towing Tractor.....	85-4
Operating System.....	16-3	Tractor storage.....	175-1
StarFire Receiver.....	16-43	Tractor-Implement Automation	
StarFire Receivers		Activating Tractor-Implement Automation	
Installation.....	25-14	Equipment.....	50-2
Start Gear.....	41-8	Introduction.....	50-1
Starting engine.....	30-7	Requirements for IVT/AutoPowr.....	50-5
Steering wheel and column, adjusting.....	25-6	Requirements for PTO.....	50-3
Steps		Tractor-Implement Automation™	
Left-Hand.....	25-21	Operating TIA.....	50-3
Right-Hand.....	25-22	Requirements for drive strategy.....	50-6
Stop indicator.....	15-1	Requirements for E-SCVs.....	50-4
Stopping engine.....	30-8	Requirements for guidance.....	50-6
Storage.....	175-2	Requirements for rear hitch.....	50-6
Storing DEF.....	90-10	Trailer Air Brake Filter	
Storing Fuel.....	90-2	Air Brake Dryer Filter.....	130-7, 145-2
Suspension		Trailer Air Brakes.....	40-18
Lubricate cab suspension system.....	120-17	Transmission	
Sway blocks.....	65-13	AutoPowr	
		Controls Identification.....	45-1
		Park position.....	115-4
		CommandQuad.....	41-8
		Custom Transmission Settings.....	41-6
		Description and Controls.....	41-1
		Downhill Operation in Slippery Conditions.....	41-9
		Neutral start system.....	115-3
		Operating.....	41-2
		Park position.....	115-4
		Tractor Speed Display.....	41-9
		Transmission CommandCenter Main Page.....	41-5
		e23™ Transmissions,	
		Come home mode.....	40-19
		Efficiency Manager™	
		Set Speeds	
		Adjusting.....	41-3
		IVT/AutoPowr	
		Acceleartor Pedal Mode.....	45-11
		Acceleration Aggressiveness.....	40-15, 45-9
		AutoClutch Sensitivity.....	40-15, 45-9
		Come home mode.....	40-19
		Creeper mode, using.....	45-10
		Custom Settings.....	45-7
		Downhill operation in slippery conditions.....	45-14
		Left-Hand Reverser Shift Pattern.....	45-2
		Modes.....	45-6
		Operating.....	45-3
		Putting tractor in motion.....	45-10
		Reverse/Forward Set Speed Ratio.....	45-8
		Right-Hand Reverser Shift Pattern.....	45-2
		Set Speeds	
		Adjusting.....	45-4
		Set speeds, guidelines and examples.....	45-5
		Setting maximum speed.....	45-6

T

Tachometer.....	15-4
Tank, Fuel.....	90-4
Testing diesel exhaust fluid (DEF).....	90-12
Three-camera video connectors	
Ethernet cable.....	16-46
Tire Pressure	
Front	
Group 42 Tires.....	80-4, 80-5
Group 43 IF Tires.....	80-8
Group 43 Tires.....	80-6, 80-7
Group 44 Tires.....	80-9
Rear	
Group 47 Tires Duals.....	81-6, 81-7
Group 47 Tires Singles.....	81-4, 81-5
Group 48 IF Tires Duals.....	81-13
Group 48 IF Tires Singles.....	81-12
Group 48 Tires Duals.....	81-10, 81-11
Group 48 Tires Singles.....	81-8, 81-9
Group 49 Tires.....	81-14
TLS Plus	
Accumulator Charge Pressure	
Checking.....	125-3, 130-6
Explaining.....	40-10
Top speed, note.....	40-4
Torque charts	
Metric.....	180-13
Unified inch.....	180-14
TouchSet Depth Control	
Attaching Control System.....	55-1
Attaching Implement.....	55-1
TouchSet™ depth controls.....	55-2

Continued on next page

	Page		Page
Stopping tractor	45-13	MFWD	
Oil		Eight-Position Wheel Settings	80-14
Changing	135-2	Tightening Wheel Bolts	80-11, 120-8
Level, Checking	105-2	Tire Load Rating	80-10, 81-15
Operating		Toe-in	80-12
Operating e23™ Transmission with		Steering Stop Positions	80-13
Left-hand reverser	44-4	Tire Combinations	80-2, 81-2
Operating e23™ Transmission with		Tire Inflation Pressures	80-3
Right-hand reverser	44-1	Tire, Fender, and Steering Stop Settings	
Troubleshooting	165-4	Table Explanation	80-18
Warm-up	40-5	Tire, fender, steering stop settings	
Transporting		1150/1300 Axles	80-19
Driving on Roads	85-1	1150/1300 Axles with front hitch	80-26
On carrier	85-7	1150/1300 Axles with front loader	80-30
Towing Tractor	85-4	TLS Plus axle	80-23
With ballast	85-1, 85-2	TLS Plus axle with front hitch	80-28
Troubleshooting		TLS Plus axle with front loader	80-34
Depth control	165-9	TLS Plus	
Electrical System	165-10	Toe-in	80-12
Engine	165-1	Rear	
Hitch	165-6	Adjusting and Tightening	
Hydraulics	165-5	12-Bolt Hubs	81-20, 120-11
Operator enclosure	165-12	Cast 10-Bolt Hubs	81-19, 120-10
Premium radio	165-13	Cast Hubs	81-18, 120-9
Selective control valve	165-8	Dual Hub Extensions	81-31
Tractor Operation	165-13	Dual Row Crop Settings	81-31
Transmission	165-4	Guidelines	
Turn signal, operating	20-5	Wheel, Tire, and Tread	81-22
		Inflation Pressure	81-3
		Inflation Pressures	
		Group 47 Tires Duals	81-6, 81-7
		Group 47 Tires Singles	81-4, 81-5
		Group 48 IF Tires Duals	81-13
		Group 48 IF Tires Singles	81-12
		Group 48 Tires Duals	81-10, 81-11
		Group 48 Tires Singles	81-8, 81-9
		Group 49 Tires	81-14
		Installing Drive Wheel to Hub	81-17, 120-8
		Installing Steel Wheel to Hub	81-17, 120-9
		Tire Combinations	81-2
		Tread settings	
		Dual wheel - cast	81-29
		Dual wheel - steel	81-26
		Single wheel - cast	81-24
		Single wheel - Steel	81-23
		Weights	75-15, 120-7
		Slip	75-20
		Tightening stand	81-21, 120-7
		Wiper and Washer	
		Front	25-9
		Wiper and washer, operating	
		Rear window	25-9
		Z	
		Zinc-Flake	
		Coated Fasteners	180-14

John Deere Service Literature Available

Technical Information

Technical information can be purchased from John Deere. Some of this information is available in electronic media, such as CD-ROM disks, and in printed form. There are many ways to order. Contact your John Deere dealer. Call **1-800-522-7448** to order using a credit card. Search online from <http://www.JohnDeere.com>. Please have available the model number, serial number, and name of the product.

Available information includes:

- **PARTS CATALOGS** list service parts available for your machine with exploded view illustrations to help you identify the correct parts. It is also useful in assembling and disassembling.
- **OPERATOR'S MANUALS** providing safety, operating, maintenance, and service information. These manuals and safety signs on your machine may also be available in other languages.
- **OPERATOR'S VIDEO TAPES** showing highlights of safety, operating, maintenance, and service information. These tapes may be available in multiple languages and formats.
- **TECHNICAL MANUALS** outlining service information for your machine. Included are specifications, illustrated assembly and disassembly procedures, hydraulic oil flow diagrams, and wiring diagrams. Some products have separate manuals for repair and diagnostic information. Some components, such as engines, are available in separate component technical manuals
- **FUNDAMENTAL MANUALS** detailing basic information regardless of manufacturer:
 - Agricultural Primer series covers technology in farming and ranching, featuring subjects like computers, the Internet, and precision farming.
 - Farm Business Management series examines "real-world" problems and offers practical solutions in the areas of marketing, financing, equipment selection, and compliance.
 - Fundamentals of Services manuals show you how to repair and maintain off-road equipment.
 - Fundamentals of Machine Operation manuals explain machine capacities and adjustments, how to improve machine performance, and how to eliminate unnecessary field operations.



TS189—UN—17JAN89



TS191—UN—02DEC88



TS224—UN—17JAN89



TS1663—UN—10OCT97

DX,SERVLIT -19-31JUL03-1/1

PROOF PROOF

John Deere Service Keeps You On The Job

John Deere Is At Your Service

CUSTOMER SATISFACTION is important to John Deere.

Our dealers strive to provide you with prompt, efficient parts and service:

- Maintenance and service parts to support your equipment.
- Trained service technicians and the necessary diagnostic and repair tools to service your equipment.

CUSTOMER SATISFACTION PROBLEM RESOLUTION PROCESS

Your John Deere dealer is dedicated to supporting your equipment and resolving any problem you may experience.

1. When contacting your dealer, be prepared with the following information:

- Machine model and product identification number
- Date of purchase
- Nature of problem

2. Discuss problem with dealer service manager.

3. If unable to resolve, explain problem to dealership manager and request assistance.

4. If you have a persistent problem your dealership is unable to resolve, ask your dealer to contact John Deere for assistance. Or contact the Ag Customer Assistance Center at 1-866-99DEERE (866-993-3373) or e-mail us at www.deere.com/en_US/ag/contactus/.



TS201—UN—15APR13

DX,IBC,2 -19-02APR02-1/1

PROOF

PROOF PROOF