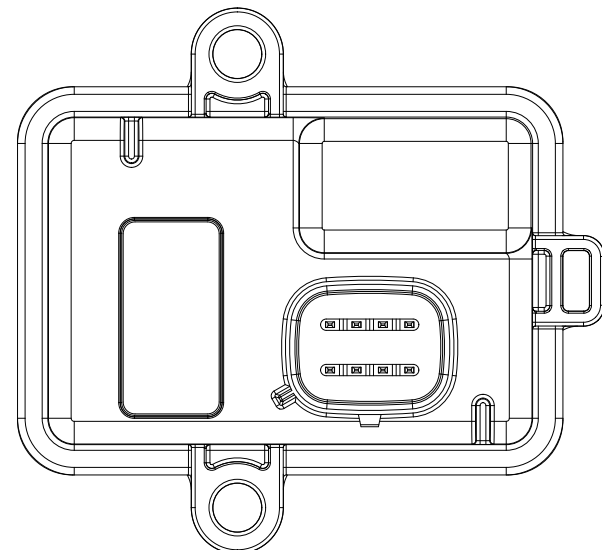
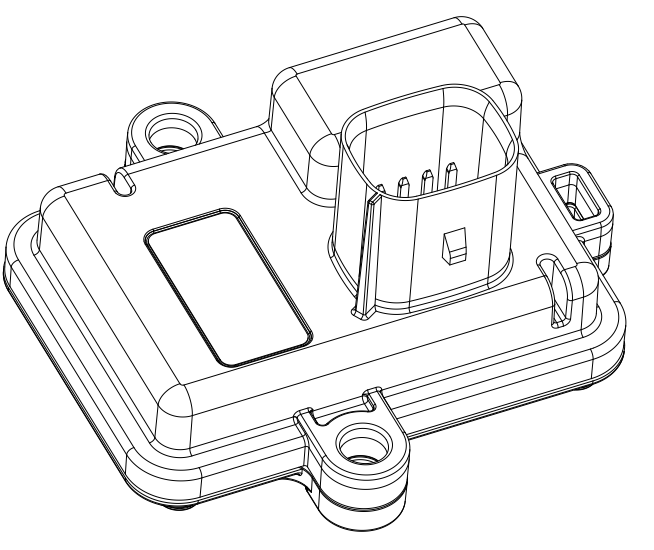
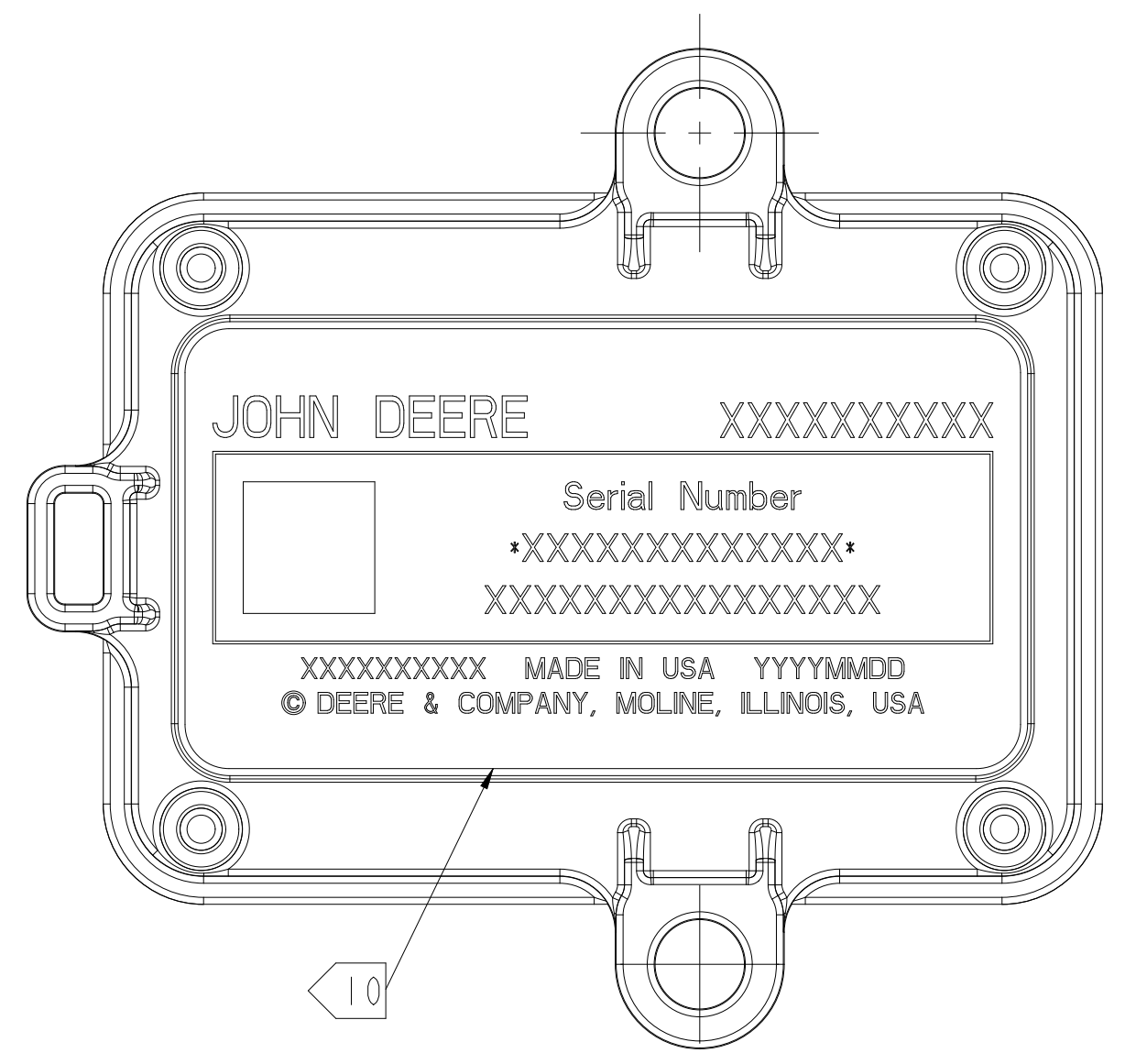
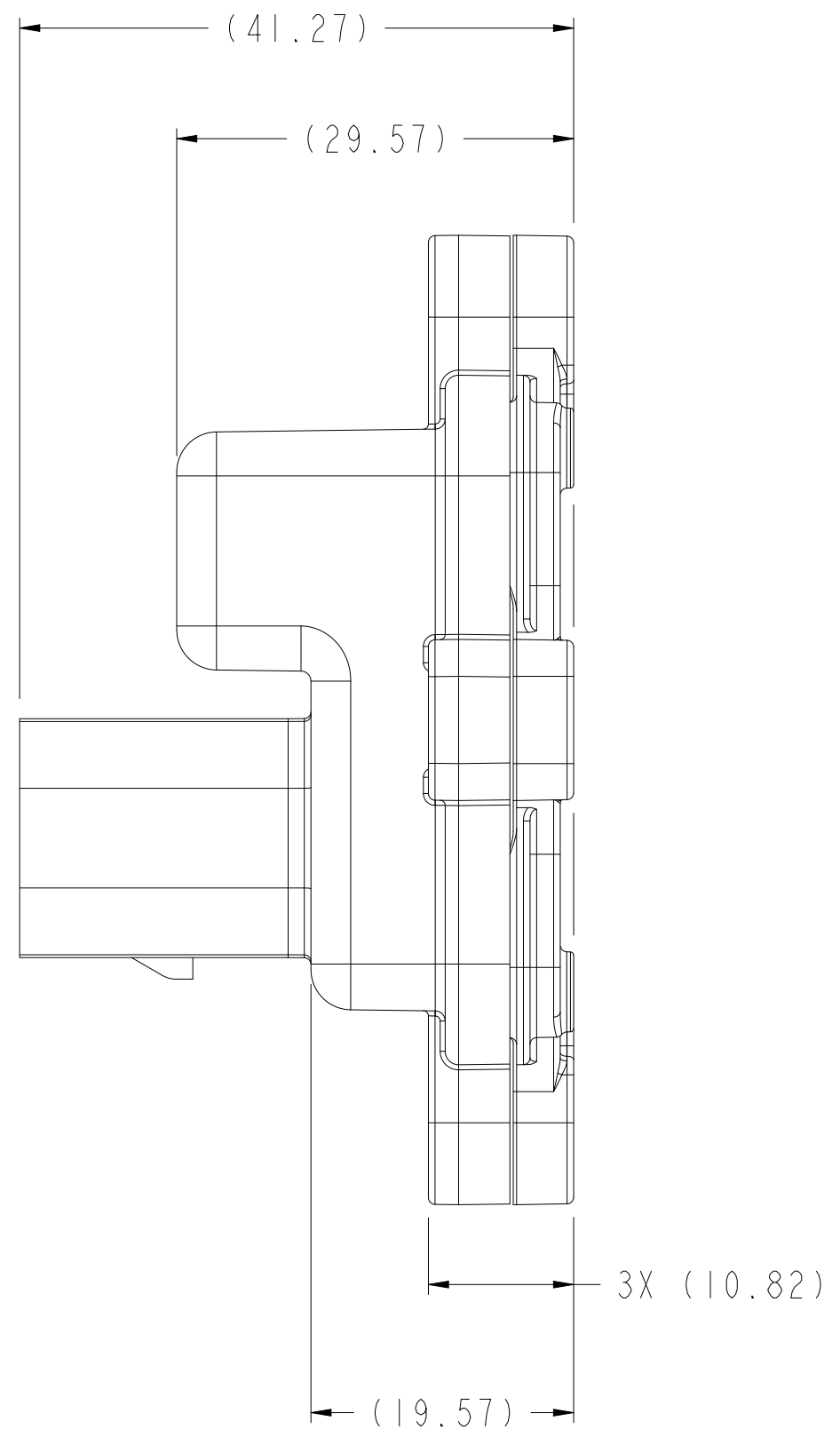
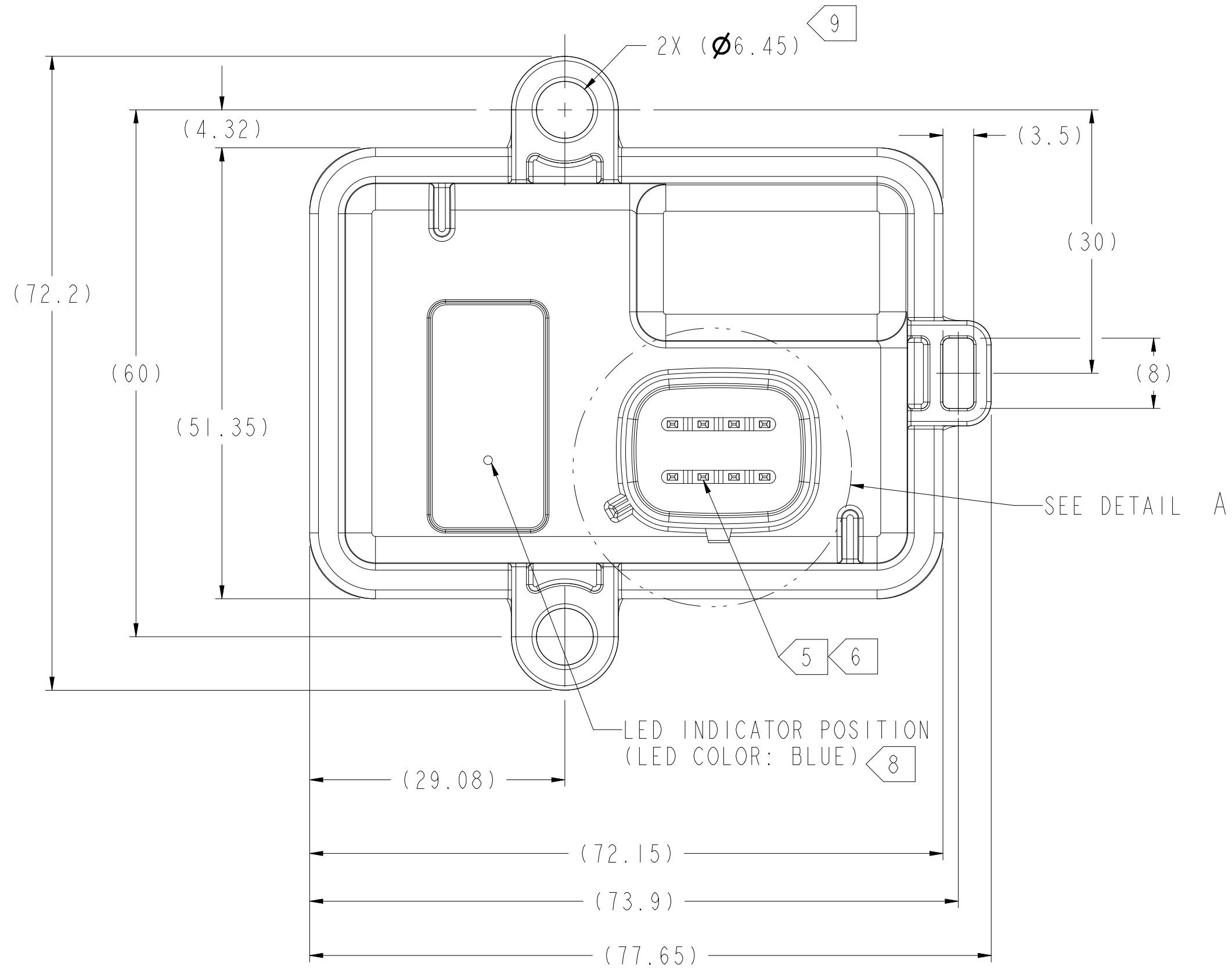


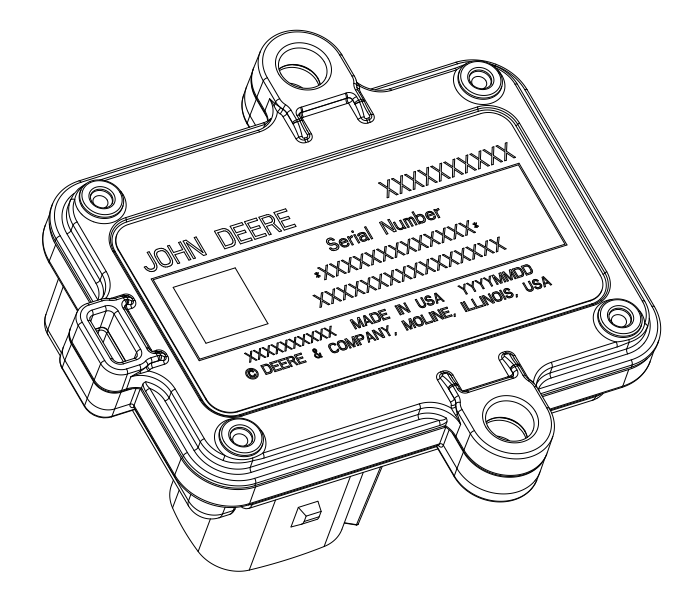
ZONE	SYM	DESCRIPTION	CHANGE DOC	DATE(YYYY-MM-DD)	APPROVED
-	CI	NEW	166468PH	2018-01-08	MICHAEL A. HAJICEK



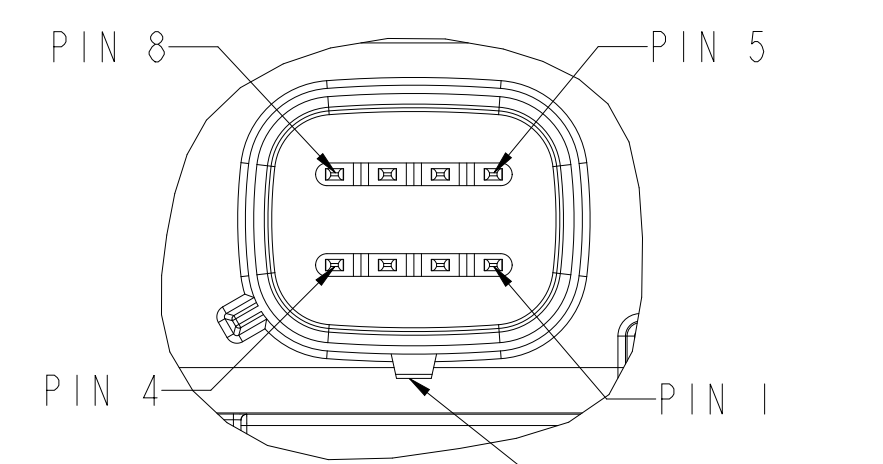
ACTUAL SIZE



VIEW FOR REFERENCE ONLY
SCALE 1:1



VIEW FOR REFERENCE ONLY
SCALE 1:1



DETAIL A
SCALE 2:1

- THIS DRAWING DESCRIBES THE CUSTOMER INTERFACE TO JOHN DEERE ELECTRONIC SOLUTIONS ASSEMBLY NUMBER PH90234631X.
- THE AUTHORITY FOR ASSEMBLY CONTENT IS THE RELEASED BILL OF MATERIAL (BOM). REFER TO THE BOM FOR ASSEMBLY CONTENT AND DETAIL PART NUMBER REVISION LEVEL.
- THE AUTHORITY FOR EACH DETAIL PART IS THE DETAIL PART DRAWING. REFER TO THE DETAIL PART DRAWING AND DATASET (AS APPLICABLE) FOR COMPLETE DETAIL PART DEFINITION.
- ALL DIMENSIONS ARE FOR REFERENCE ONLY, SEE DETAIL PART NUMBERS FOR DETAIL DIMENSIONS AND TOLERANCES.
- MATING CONNECTOR IS MOLEX MX150 SERIES FEMALE SEALED CONNECTOR, 8 PIN, A KEYING, MOLEX PART NUMBER 33472-4801 (WITHOUT CONNECTOR POSITION ASSURANCE) OR MOLEX PART NUMBER 33472-4806 (WITH CONNECTOR POSITION ASSURANCE).
- CONNECTOR TERMINAL FINISH IS TIN.
- THE MATING CONNECTOR NOTED IN NOTE 5 MUST BE CONNECTED TO THE MODULE FOR IT TO RESIST DUST OR CHEMICAL INTRUSION, OR WATER INTRUSION FROM SPRAY OR IMMERSION.
- THERE IS AN LED VISUAL STATUS INDICATOR LOCATED IN THIS AREA UNDERNEATH THE WHITE LABEL MATERIAL. AVOID DIRECTLY CONTACTING, PROBING, OR TOUCHING THIS AREA WITH FOREIGN OBJECTS AS DAMAGE TO THE LABEL OVERLAY COULD OCCUR. ANY DAMAGE TO OR PUNCTURING OF THE LABEL OVERLAY MAY COMPROMISE THE WATER BARRIER AND RESULT IN MOISTURE INGRESS INTO THE UNIT.
- MODULE MAY BE MOUNTED USING EITHER CABLE TIES OR COMPATIBLE M5 OR M6 HEX FLANGE HEAD MOUNTING HARDWARE. MOUNTING TORQUE TO BE 6.0 Nm MAXIMUM.
- LABEL INFORMATION SHOWN IS FOR REFERENCE PURPOSES ONLY.
- THIS ELECTRONIC ASSEMBLY IS DESIGNED TO MEET THE ENVIRONMENTAL REQUIREMENTS STATED IN THE PRODUCT REQUIREMENTS DOCUMENT ONLY AFTER IT HAS BEEN INSTALLED ON THE VEHICLE. THE PACKAGING USED FOR SHIPPING AND STORAGE IS NOT ADEQUATE TO PROTECT THE ELECTRONIC ASSEMBLY TO THESE SAME ENVIRONMENTAL REQUIREMENTS. THIS PRODUCT MUST BE STORED IN ITS ORIGINAL SHIPPING PACKAGE AND AWAY FROM DIRECT EXPOSURE TO MOISTURE AND SUNLIGHT UNTIL IT IS ASSEMBLED ON THE VEHICLE.
- COMPLIANCE WITH EUROPEAN REGULATION 1907/2006 (EU REACH), INCLUDING ITS ANNEX XVII BAN OF CERTAIN SUBSTANCES AND DISCLOSURE OF SUBSTANCES OF VERY HIGH CONCERN ARE REQUIRED FOR THIS PART.
- <KC> PER AG 001.

J1 CONNECTOR	
PIN	DESCRIPTION
1	VBAT
2	GP10 1: DigIn1/HSD1/AnIn1
3	GROUND
4	GP10 2: DigIn2/HSD2/AnIn2
5	CAN High
6	CAN Low
7	RS232 Tx
8	RS232 Rx

MATERIALS PER JDM H31

INTERFACE DRAWING

CONFIDENTIAL AND PROPRIETARY TO DEERE & COMPANY UNAUTHORIZED USE, DISCLOSURE, OR REPRODUCTION PROHIBITED. COPYRIGHT © DEERE & COMPANY. ALL RIGHTS RESERVED.	ORIGINATOR: MICHAEL A. HAJICEK REFERENCE: 2018-01-08JDS-G113	SCALE: 2:1 SIZE: D CAGE CODE:
	MATERIAL: SEE NOTES	NAME: MODULE CAN2BLE BRIDGE PV POPULATION
DEERE & COMPANY MOLINE, ILLINOIS 61265		PART NUMBER: PH90234631X
MODEL RL: Develop MODEL REV: C.2 DRW REV: C.3 DRW RL: Develop (MSSG KG): (0.067)		