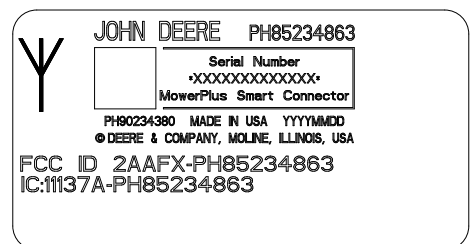
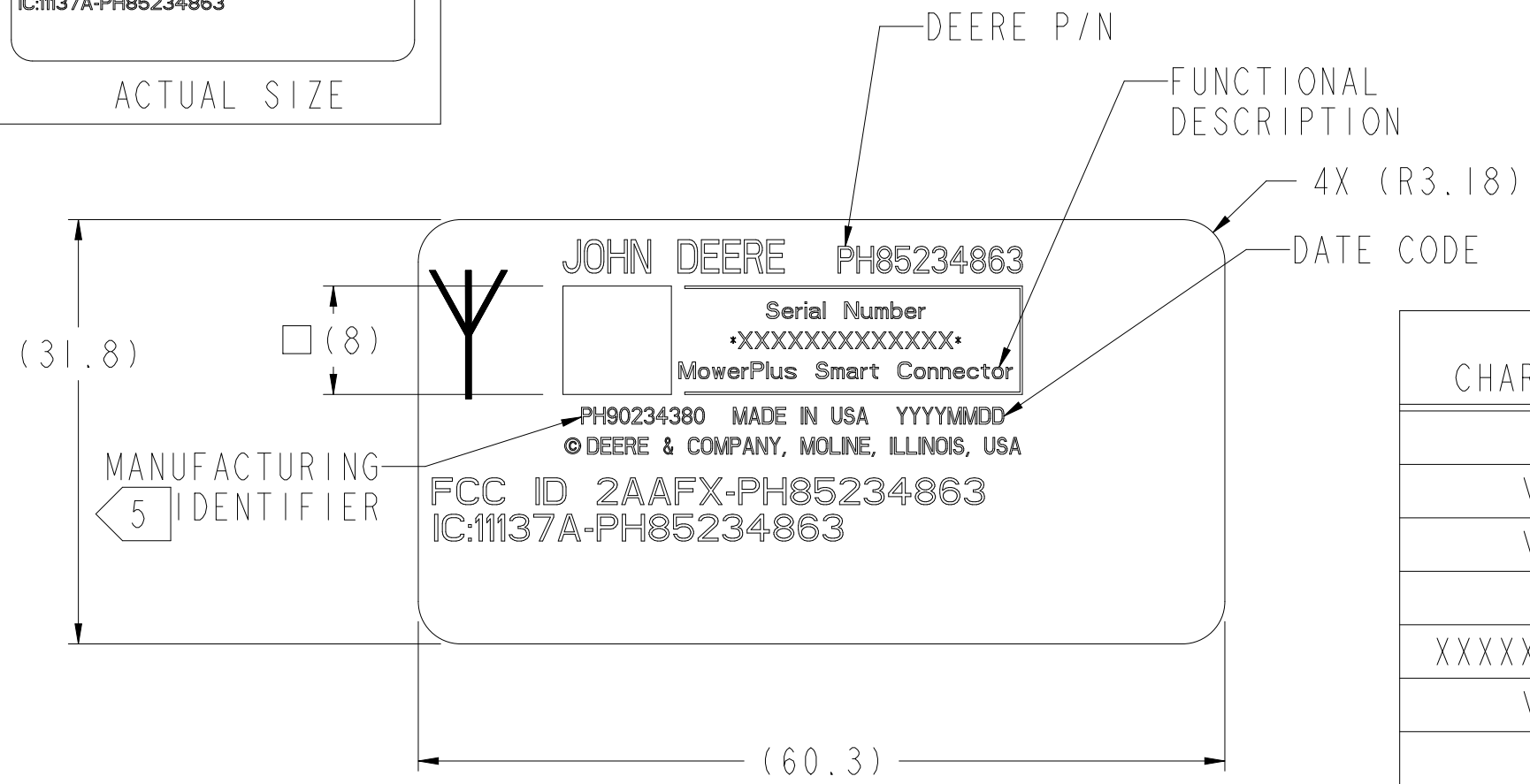


SYM	DESCRIPTION	CHANGE DOC	DATE (YYYY-MM-DD)	APPROVED
AI	NEW	166740PH	2018-03-06	MICHAEL A. HAJICEK



ACTUAL SIZE



PRELIMINARY
20180518
DO NOT MANUFACTURE
PARTS USING THIS DRAWING

CHARACTERS	DESCRIPTION	ASCII CONTROL CHARACTERS
[] >	HEADER	--
\x1E	RECORD SEPARATOR (RS)	30
\x1D	GROUP SEPARATOR (GS)	29
20P	CUSTOMER CODE	--
XXXXXXXXXXXX	DEERE PART NUMBER	--
\x1D	GROUP SEPARATOR (GS)	29
S	JDES CODE	--
XXXXXXXXXXXX	SERIAL NUMBER	--
\x1D	GROUP SEPARATOR (GS)	29
16D	JDES CODE	--
YYYYMMDD	DATE CODE	--
\x1E	RECORD SEPARATOR (RS)	30
\x04	END OF TRANSMISSION (EOT)	4

MATERIALS PER JDM H31

MATERIAL PH53210926	CONFIDENTIAL AND PROPRIETARY TO DEERE & COMPANY. UNAUTHORIZED USE, DISCLOSURE, OR REPRODUCTION PROHIBITED. COPYRIGHT © DEERE & COMPANY. ALL RIGHTS RESERVED.			ORIGINATOR MICHAEL A. HAJICEK	
	ORIGINATION DATE 2018-03-06	REFERENCES: JDS-G113	METRIC	SCALE 2:1	JD90
	NAME LABEL PN - SN CAN2BLE BRIDGE			SIZE B	
	DEERE & COMPANY MOLINE, ILLINOIS 61265			VERSION JD90	SHEET 1/1
PART NUMBER PH53234486			REVISION A		REV A

- DRAWING INTENT IS ONLY TO ESTABLISH GENERAL LABEL REQUIREMENTS. REFER TO PRODUCT CONFIGURATION INFORMATION DOCUMENT (PDP-428-F1) ON WHERE USED BOM FOR PRODUCT SPECIFIC PARAMETERS.
- FONT DEFINITION: ALL TEXT TO BE ARIAL FONT. JOHN DEERE TO BE 2.5 mm. CUSTOMER P/N, FCC ID, IC ID, TO BE 2.0 mm. ALL OTHER TEXT TO BE 1.25 mm.
- TEXT COLOR: JDM F9RL LABEL GLOSS BLACK
- DATA MATRIX TO CONTAIN INFORMATION LISTED IN TABLE

5 IF REQUIRED, INDICATED TEXT FIELD TO BE USED FOR A MANUFACTURING IDENTIFIER. COMMON USE CASE IS TO POPULATE JDES PH90 NUMBER WHEN DEERE P/N IS A PH85.

PART NUMBER
PH53234486
JD90
1/1
A