

Appendix C – Highest Test Plots

Test Date : 2024-01-31 | Ambient Temp : 22.5 °C | Tissue Temp : 21.4 °C

Test Mode

1_BT_GFSK_Rear Face of Left Ear_0mm_Ch39

Device Under Test Properties

Manufacturer or Brand	Model No. or Code Name	Sample No. or IMEI	DUT Type
Corsair	RDA0049	A019	Headset

Exposure Conditions

Phantom Section	Band	Group, UID	Frequency [MHz], Channel Number	Conversion Factor	TSL Conductivity [S/m]	TSL Permittivity
Flat	ISM 2.4 GHz Band	Bluetooth, 10032 - CAA	2441.000, 39	7.05	1.80	40.9

Hardware Setup

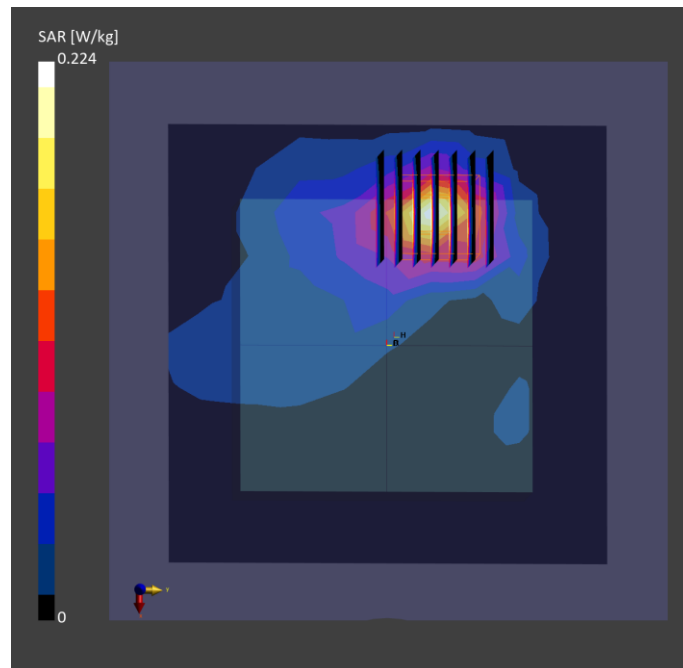
Phantom	Tissue Simulating Liquid	Probe Calibration Date	DAE Calibration Date
Twin-SAM V8.0 (30deg probe tilt) - 2102	HBBL-600-10000	EX3DV4 - SN7737 / 2023-06-05	DAE4 Sn1743 / 2023-08-17

Scan Setup

	Area Scan	Zoom Scan
Grid Extents [mm]	120.0 x 120.0	30.0 x 30.0 x 30.0
Grid Steps [mm]	12.0 x 12.0	5.0 x 5.0 x 5.0
Sensor Surface [mm]	3.0	1.4
Graded Grid	N/A	Yes
Grading Ratio	N/A	1.4

Measurement Results

	Area Scan	Zoom Scan
psSAR-1g [W/kg]	0.166	0.172
psSAR-10g [W/kg]	0.076	0.078
Power Drift [dB]		-0.01
TSL Correction	Positive only	Positive only
M2 / M1 [%]		49.4
Dist 3dB Peak [mm]		9.9



Test Date : 2024-01-31 | Ambient Temp : 22.5 °C | Tissue Temp : 21.4 °C

Test Mode

2_SRD_GFSK_Rear Face of Right Ear_0mm_Ch0

Device Under Test Properties

Manufacturer or Brand	Model No. or Code Name	Sample No. or IMEI	DUT Type
Corsair	RDA0049	A019	Headset

Exposure Conditions

Phantom Section	Band	Group, UID	Frequency [MHz], Channel Number	Conversion Factor	TSL Conductivity [S/m]	TSL Permittivity
Flat	ISM 2.4 GHz Band	Bluetooth, 10670 - AAA	2402.000, 0	7.05	1.76	40.8

Hardware Setup

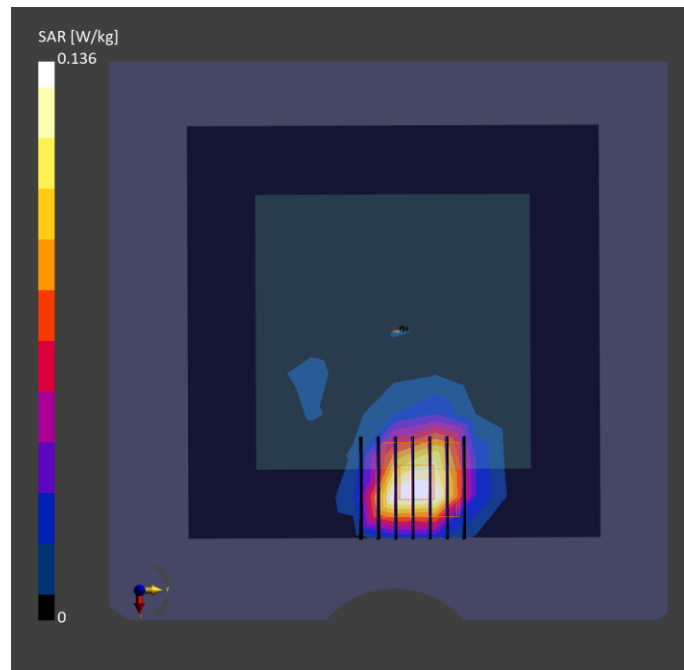
Phantom	Tissue Simulating Liquid	Probe Calibration Date	DAE Calibration Date
Twin-SAM V8.0 (30deg probe tilt) - 2102	HBBL-600-10000	EX3DV4 - SN7737 / 2023-06-05	DAE4 Sn1743 / 2023-08-17

Scan Setup

	Area Scan	Zoom Scan
Grid Extents [mm]	120.0 x 120.0	30.0 x 30.0 x 30.0
Grid Steps [mm]	12.0 x 12.0	5.0 x 5.0 x 5.0
Sensor Surface [mm]	3.0	1.4
Graded Grid	N/A	Yes
Grading Ratio	N/A	1.4

Measurement Results

	Area Scan	Zoom Scan
psSAR-1g [W/kg]	0.123	0.141
psSAR-10g [W/kg]	0.058	0.061
Power Drift [dB]		-0.02
TSL Correction	Positive only	Positive only
M2 / M1 [%]		50.8
Dist 3dB Peak [mm]		9.3



Test Date : 2024-01-31 | Ambient Temp : 22.5 °C | Tissue Temp : 21.4 °C

Test Mode

3_BT_GFSK_Antenna Side of Left Ear_0mm_Ch39

Device Under Test Properties

Manufacturer or Brand	Model No. or Code Name	Sample No. or IMEI	DUT Type
Corsair	RDA0049	A019	Headset

Exposure Conditions

Phantom Section	Band	Group, UID	Frequency [MHz], Channel Number	Conversion Factor	TSL Conductivity [S/m]	TSL Permittivity
Flat	ISM 2.4 GHz Band	Bluetooth, 10032 - CAA	2441.000, 39	7.05	1.80	40.9

Hardware Setup

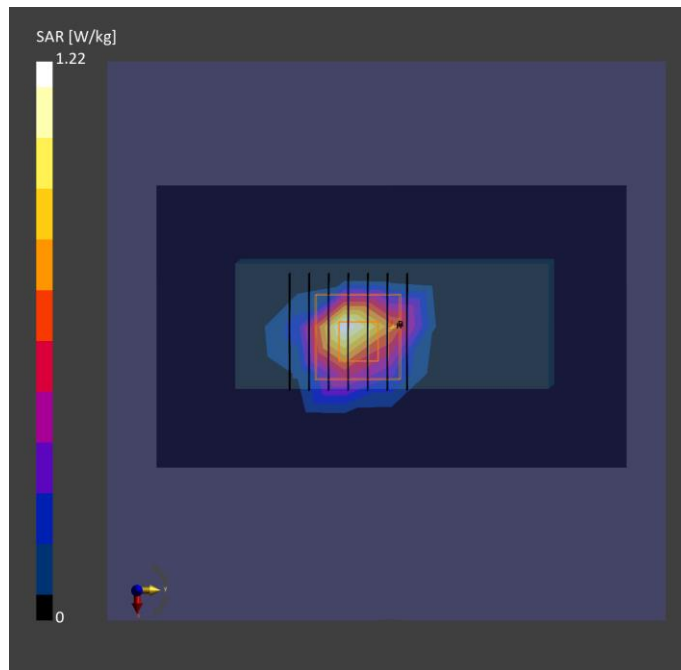
Phantom	Tissue Simulating Liquid	Probe Calibration Date	DAE Calibration Date
Twin-SAM V8.0 (30deg probe tilt) - 2102	HBBL-600-10000	EX3DV4 - SN7737 / 2023-06-05	DAE4 Sn1743 / 2023-08-17

Scan Setup

	Area Scan	Zoom Scan
Grid Extents [mm]	72.0 x 120.0	30.0 x 30.0 x 30.0
Grid Steps [mm]	12.0 x 12.0	5.0 x 5.0 x 5.0
Sensor Surface [mm]	3.0	1.4
Graded Grid	N/A	Yes
Grading Ratio	N/A	1.4

Measurement Results

	Area Scan	Zoom Scan
psSAR-1g [W/kg]	0.917	1.05
psSAR-10g [W/kg]	0.366	0.382
Power Drift [dB]		0.01
TSL Correction	Positive only	Positive only
M2 / M1 [%]		40.6
Dist 3dB Peak [mm]		7.0



Test Date : 2024-01-31 | Ambient Temp : 22.5 °C | Tissue Temp : 21.4 °C

Test Mode

4_SRD_GFSK_Antenna Side of Right Ear_0mm_Ch0

Device Under Test Properties

Manufacturer or Brand	Model No. or Code Name	Sample No. or IMEI	DUT Type
Corsair	RDA0049	A019	Headset

Exposure Conditions

Phantom Section	Band	Group, UID	Frequency [MHz], Channel Number	Conversion Factor	TSL Conductivity [S/m]	TSL Permittivity
Flat	ISM 2.4 GHz Band	Bluetooth, 10670 - AAA	2402.000, 0	7.05	1.76	40.8

Hardware Setup

Phantom	Tissue Simulating Liquid	Probe Calibration Date	DAE Calibration Date
Twin-SAM V8.0 (30deg probe tilt) - 2102	HBBL-600-10000	EX3DV4 - SN7737 / 2023-06-05	DAE4 Sn1743 / 2023-08-17

Scan Setup

	Area Scan	Zoom Scan
Grid Extents [mm]	72.0 x 120.0	30.0 x 30.0 x 30.0
Grid Steps [mm]	12.0 x 12.0	5.0 x 5.0 x 5.0
Sensor Surface [mm]	3.0	1.4
Graded Grid	N/A	Yes
Grading Ratio	N/A	1.4

Measurement Results

	Area Scan	Zoom Scan
psSAR-1g [W/kg]	0.671	0.722
psSAR-10g [W/kg]	0.252	0.251
Power Drift [dB]		0.02
TSL Correction	Positive only	Positive only
M2 / M1 [%]		40.7
Dist 3dB Peak [mm]		6.0

