

Wireless IP Camera

Quick Installation Guide

851

Safety Instruction

These instructions are intended to ensure that user can use the product, correctly to avoid danger or property loss.

Warnings

1. Proper configuration of all passwords and other security settings is the responsibility of the installer and end-user.
2. In the use of the product, you must be in strict compliance with the electrical safety regulations of the nation and region. Please refer to technical specifications for detailed information.
3. Input voltage should meet both the SELV (Safety Extra Low Voltage) and the Limited Power Source with 100 to 240 VAC or 5 VDC according to the IEC60950-1 standard. Please refer to technical specifications for detailed information.
4. Do not connect several devices to one power adapter as adapter overload may cause over-heating or a fire hazard.
5. Please make sure that the plug is firmly connected to the power socket.
6. If smoke, odor or noise rise from the device, turn off the power at once and unplug the power cable, and then please contact the service center.

Prompt: Our APP will be in continuously update for better users experience. The actual operation interface may not accordance with this manual, please operate according to APP.

1. Install "MIPC" APP

Method I : Download APP in: www.mipcm.com/download;

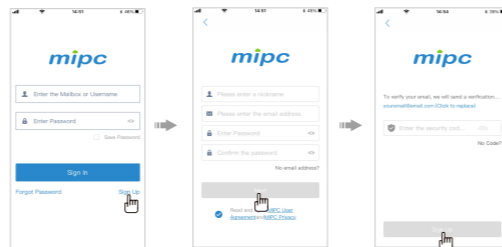
Method II: Scan to Download:



Method III: Download "MIPC" APP from APP Store(iOS) or Play Store(Android).

2. Register an Account

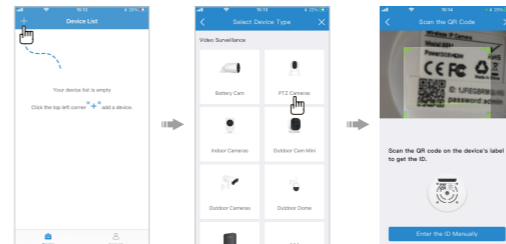
Open "MIPC" APP, click the "sign up" button, register an account as required, bind an email then log in



01

3. Add camera

- a. Click the "+" in the upper left corner of the device list, select "PTZ Cameras";
- b. Please connect the camera to the power (Until you hear the drip sound; If no drip sound please press the RESET button for 1 second, you will hear the voice prompt say "Waiting for receiving the wireless configuration") supply and get close to the router,
- c. scan the QR code at the bottom of the camera, and setup network.



02

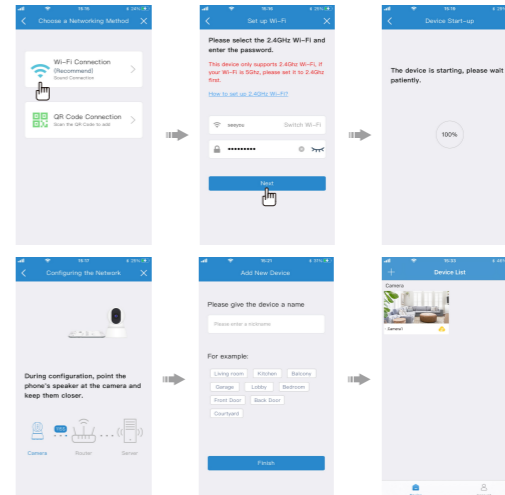
4. Select the network connection

You could choose either "Wi-Fi connection" or "QR code connection" to connect the camera.

Option 1: Wi-Fi connection

- a. Click the "Wi-Fi Connection" icon(Only support 2.4GHz), and enter the Wi-Fi password;

- b. Wait for the device to complete startup, and finish the configuration;
- c. Set the nickname and click "Finish".



Note:

- ① Press the RESET button for 1 second to enter the Wi-Fi configuration mode; Long press for more than 10 seconds to restore the factory settings (Hearing the corresponding voice means the setting is successful);
- ② If the "WiFi Connection" configuration fails, you can try "QR Code Connection".

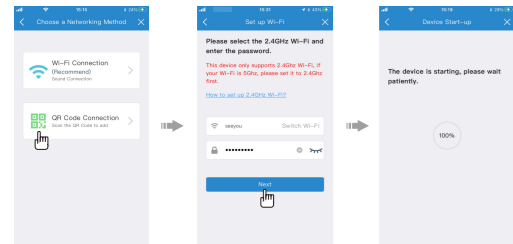
03



MIPC Download
Google play App Store

Option 2: QR Code connection

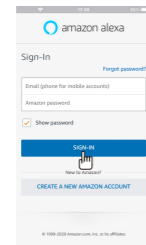
- Click the "QR Code Connection" icon;
- Click the "Wi-Fi Connection" icon(Only support 2.4GHz), and enter the Wi-Fi password
- Wait for the device to complete startup, put the QR code in front of the camera lens;
- Wait until the configuration is successful; Set up a nickname and click "Finish".



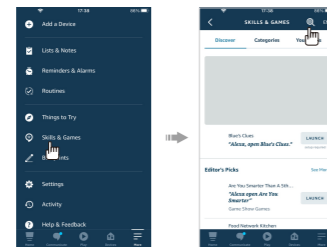
04

5. Add Alexa

- Download and install the app of Amazon Alexa (or Amazon Echo);
- Register or log in your Alexa account, and then connect your Echo;

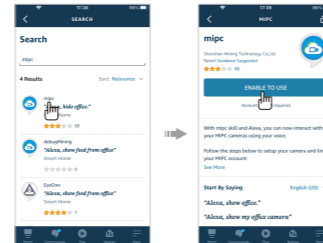


- Tap "More" at the lower right corner of Alexa app;
- Select "Skills & Games";

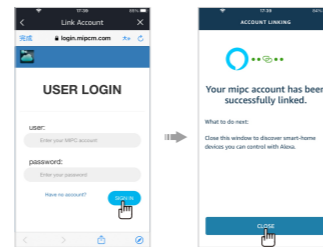


05

- Enter "mipc" at the search bar;
- The result will show the skill of "mipc" and select it;
- Activate "mipc" skill by tapping "ENABLE TO USE";

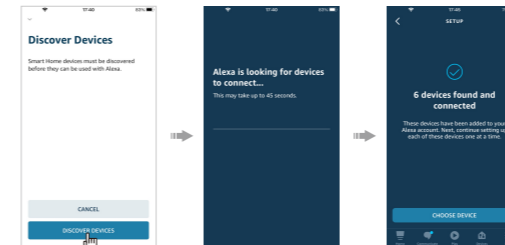


- Please enter mipc account and sign in so as to link mipc account with Alexa app;
- Close the page after your mipc account has been successfully linked;



06

- Back to the skill detail page, there's a prompt message whether to search device immediately. Tap "Discover Devices" to make Alexa start to search devices;
- When the page shows devices were found and connected, the devices have been added to your Alexa account;



07

FAQ

1. What if the camera cannot connect to Wi-Fi?

- A: - Check if your Wi-Fi password contains special characters such as spaces, commas, periods, etc. which may not be recognized by the camera.
- The camera is only available to 2.4GHz Wi-Fi, not 5GHz Wi-Fi. Please check and see your Wi-Fi frequency band of the router.
- Keep your mobile phone as close to the camera as possible, and keep your camera as close to the router as possible.
- Poor Wi-Fi signal may result in failure to connect to your camera. You can use a Wi-Fi Range Extender which will extend the Wi-Fi signal and wireless coverage of existing wireless networks.
- If you fail to connect the camera, please follow these steps and try again:
① Remove power cord. Then, re-plug it in.
② Press and Hold the RESET button for over 10 seconds to restore the camera to factory settings when you hear the voice prompt and the IR light turns on.
③ Set up the camera once more when you hear the voice prompt.

2. After inserting the SD card properly, why does the camera still not have any recorded videos?

- A: - The camera needs to be inserted when the camera is off.
- After the camera is inserted with SD card, the video recording function needs to be turned on manually.
- Steps: Settings-SD Card-Activate. Then set up for recording in Settings-Record-Continuous Recording/ Motion-Detection, enable the recording and save the settings.

3. APP can't receive the alarm notification?

- A: The camera has motion detection and alarm function, but it needs manual setup. Steps: enter the camera "settings", select "Notifications", enable the motion detection feature and save the settings.

08

4. What if I forget my account & password?

A: You can find your account & password with the binding email, it will not be found if not binding with email.

5. How can I see the recorded video? Can I put the SD card in the computer to playback?

A: For your privacy and security, video files are encrypted, it must be playback through mobile phone APP or computer APP, and it cannot be played directly on the computer. You need to export the video through SDtool, a special video export tool. The SDtool can be downloaded from www.mipcm.com.

6. How does the camera restore to factory settings?

A: Press and Hold the RESET button for 10 seconds, you will hear the voice prompt "Restore the factory settings successfully", now camera starting to restore, it will finish about 60 seconds, then you will hear a chime(Do not power off during restore procedures).

✉ : support@mipcm.com

FCC Statement

Changes or modifications not expressly approved by the party responsible for compliance could void the user's authority to operate the equipment.

This equipment has been tested and found to comply with the limits for a Class B digital device, pursuant to Part 15 of the FCC Rules. These limits are designed to provide reasonable protection against harmful interference in a residential installation. This equipment generates uses and can radiate radio frequency energy and, if not installed and used in accordance with the instructions, may cause harmful interference to radio communications. However, there is no guarantee that interference will not occur in a particular installation. If this equipment does cause harmful interference to radio or television reception, which can be determined by turning the equipment off and on, the user is encouraged to try to correct the interference by one or more of the following measures:

- Reorient or relocate the receiving antenna.
- Increase the separation between the equipment and receiver.
- Connect the equipment into an outlet on a circuit different from that to which the receiver is connected.
- Consult the dealer or an experienced radio/TV technician for help

This device complies with part 15 of the FCC rules. Operation is subject to the following two conditions (1) this device may not cause harmful interference, and (2) this device must accept any interference received, including interference that may cause undesired operation. This equipment complies with FCC radiation exposure limits set forth for an uncontrolled environment. This equipment should be installed and operated with minimum distance 20cm between the radiator & your body.

09